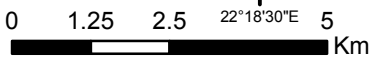
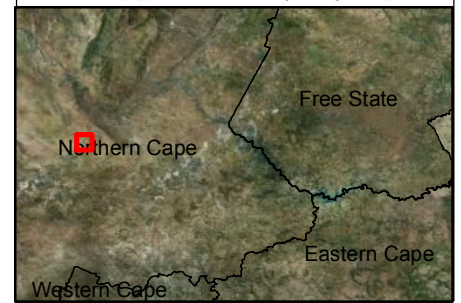


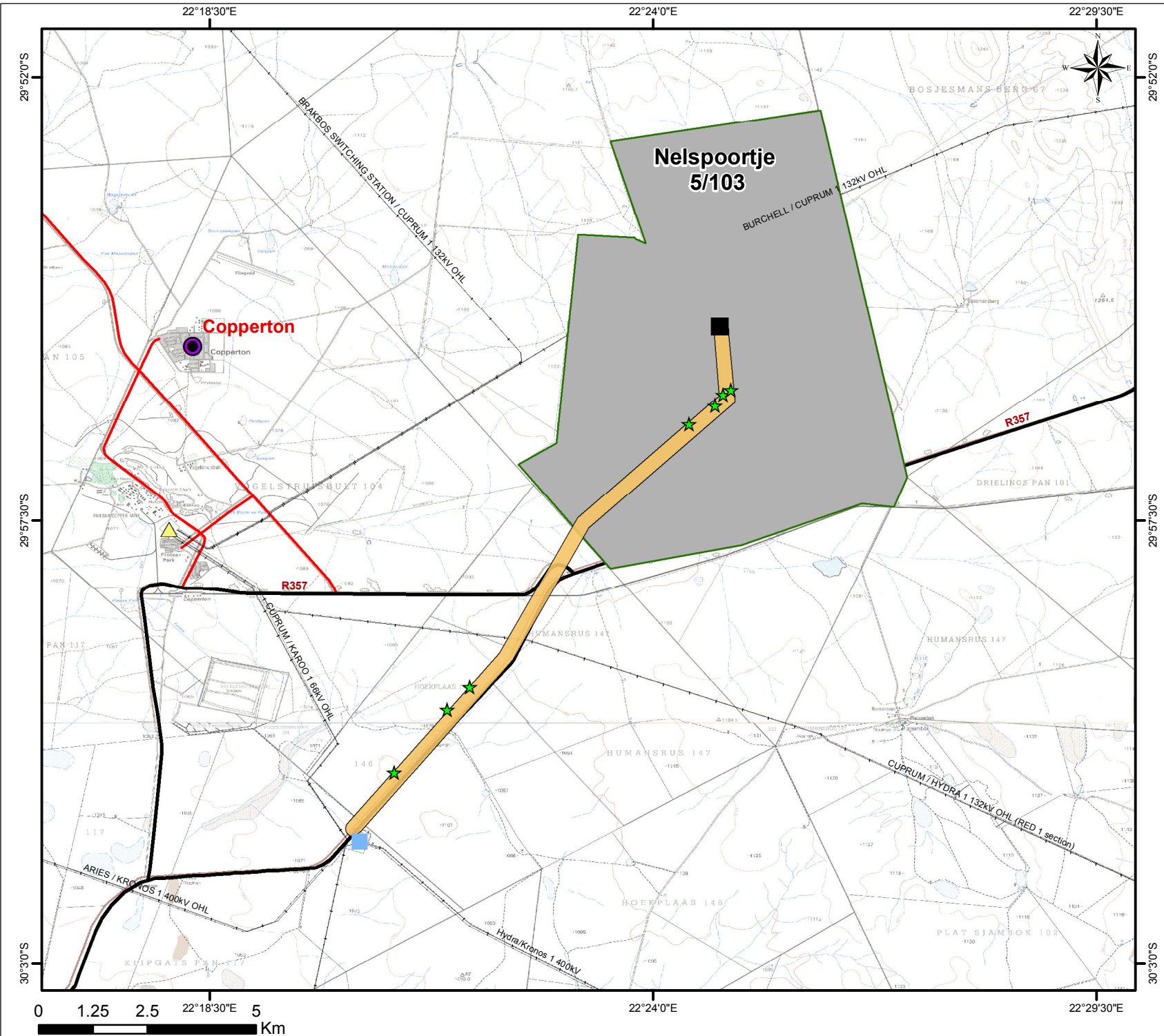
**Proposed Garob Wind Farm to Kronos Substation 132 kV power line, Copperton Northern Cape**

**Locality Map**

**Legend**

- Proposed Garob substation
- Kronos Substation
- Cuprum Substation
- Proposed Corridor 300m
- Garob Wind Energy Facility
- Existing Power Line
- Regional road
- Secondary road
- Non Perennial river
- Town



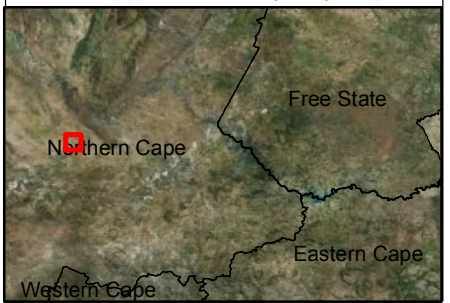


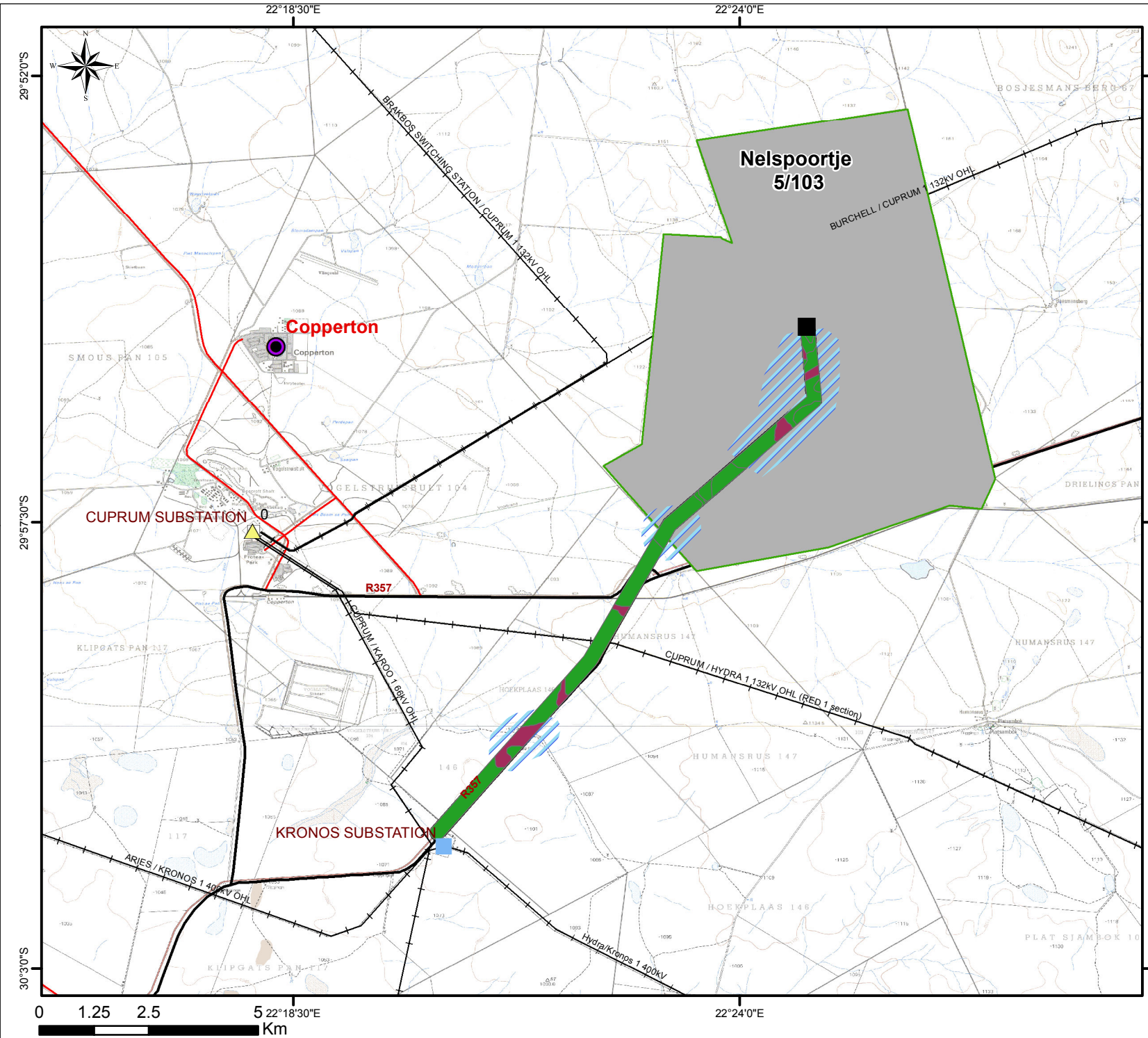
# Proposed Garob Wind Farm to Kronos Substation 132 kV power line, Copperton Northern Cape

## Heritage Map

### Legend

- ★ Stone age tools
- Proposed Garob substation
- Kronos Substation
- ▲ Cuprum Substation
- Proposed Corridor 300m
- Garob Wind Energy Facility
- Existing Power Line
- Regional road
- Secondary road
- Non Perennial river
- Town



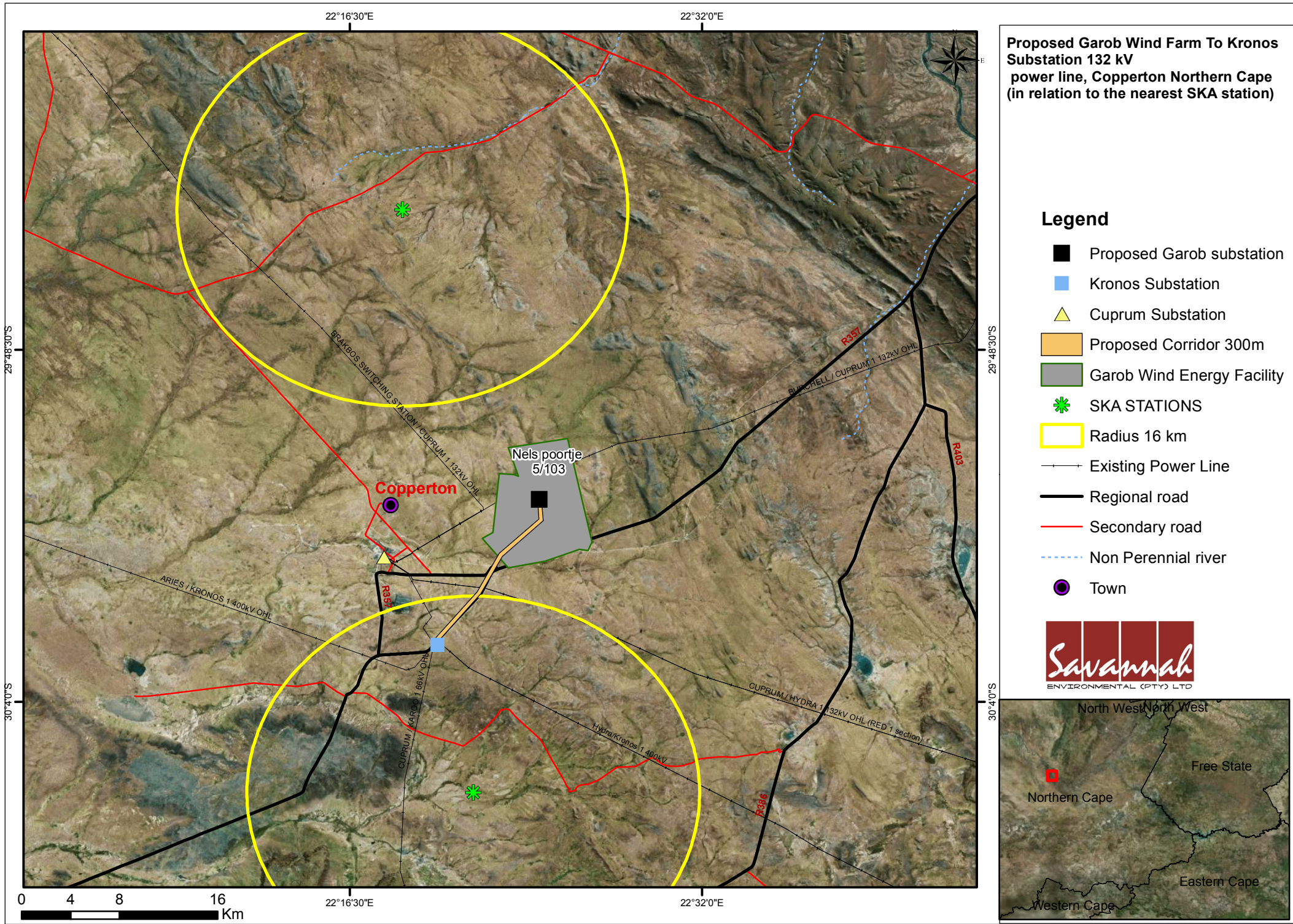


# Proposed Garob Wind Farm to Kronos Substation 132 kV power line, Copperton Northern Cape Sensitivity Map

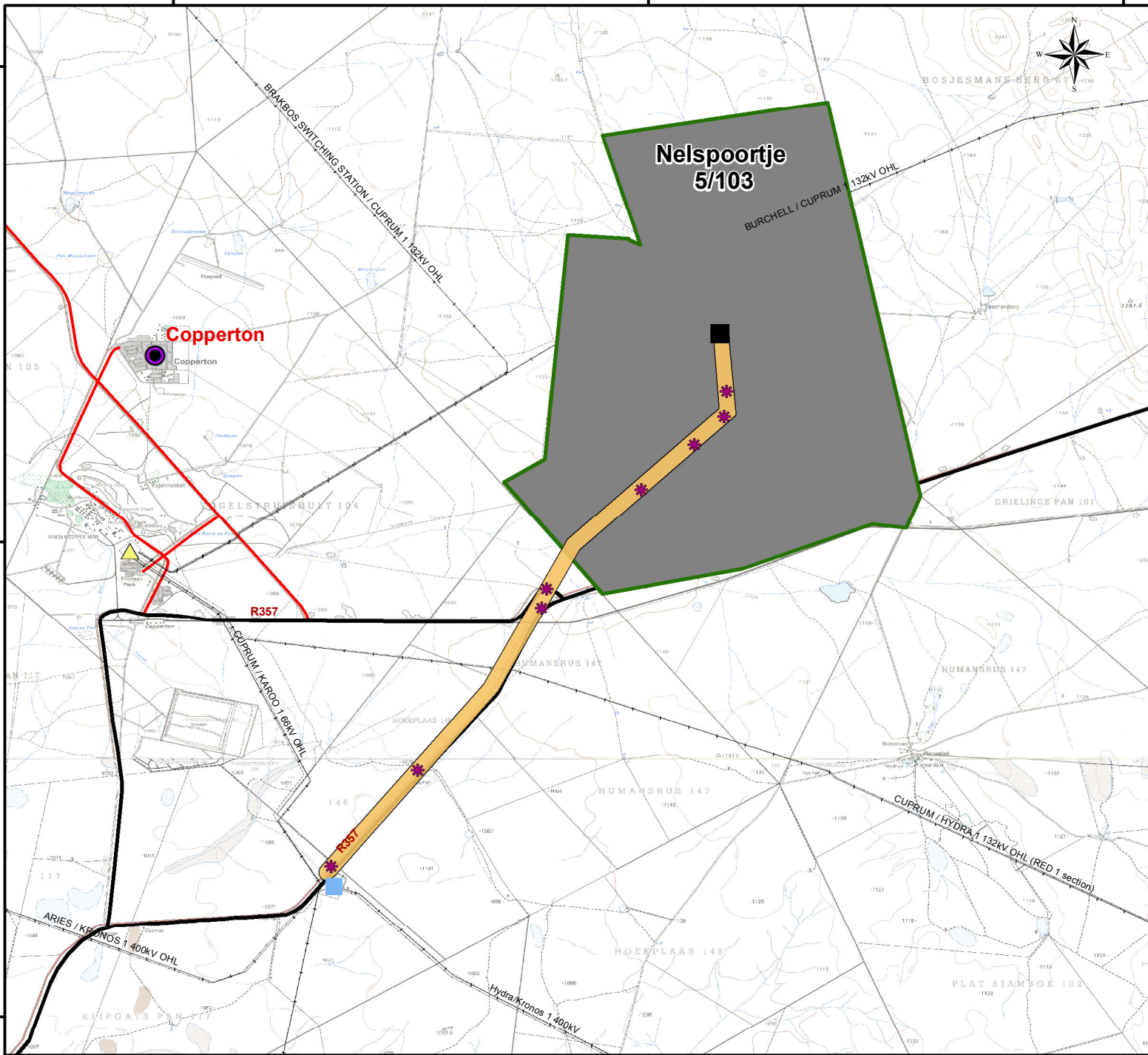
## Legend

- Proposed Garob substation
  - Kronos Substation
  - Cuprum Substation
  - Proposed Corridor 300m
  - Garob Wind Energy Facility
  - Existing Power Line
  - Regional road
  - Secondary road
  - Non Perennial river
  - Town
- ### Environmental Sensitivity
- High: Intermittent Drainage
  - Medium: Unique Habitat
  - High Avifaunal Activity






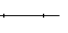









**Proposed Garob wind farm to Kronos Substation 132 kV power line near, Capperton Northern Cape  
Locality map**



**Legend**

-  Proposed Garob substation
  -  Kronos Substation
  -  Cuprum Substation
  -  Proposed Corridor 300m
  -  Garob Wind Energy Facility
  -  Existing Power Line
  -  Regional road
  -  Secondary road
  -  Non Perennial river
  -  Town
  -  Access point
- 0 120 240 480 Km

