

**DLAMS EMALANGENI
TRADING AND PROJECTS
(PTY) LTD
REG NO: 2018/301586/07**

Scale: 1:20 000

 Kilometers
0,0,51 2 3 4

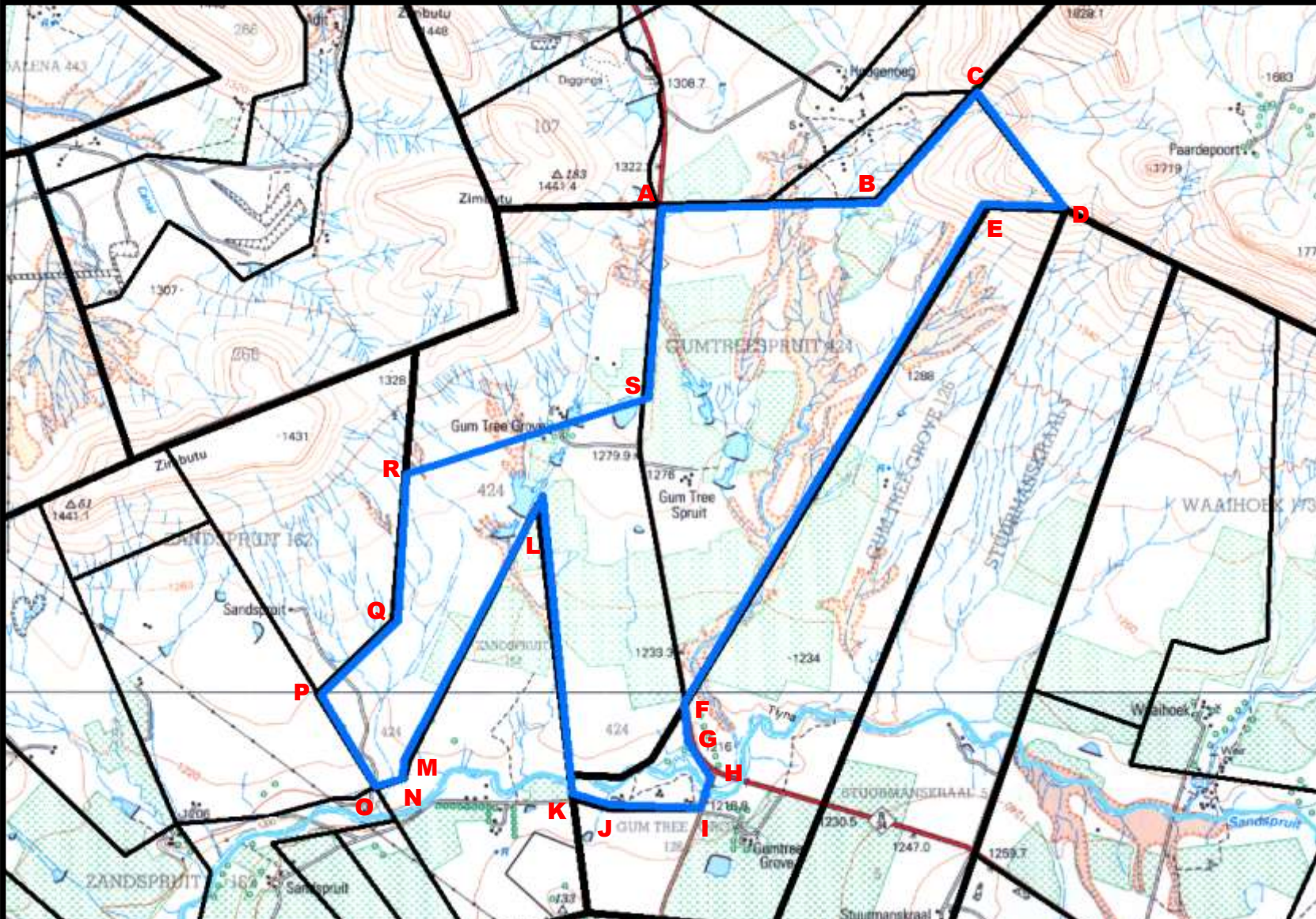
Geographic Coordinate System:

GCS_WGS_1984

Datum: D_WGS_1984

PROSPECTING BOUNDARY CO-ORDINATES

ID	LATITUDE	LONGITUDE
A	-27.714422	30.349468
B	-27.713948	30.366973
C	-27.706205	30.374697
D	-27.713728	30.381055
E	-27.713780	30.375351
F	-27.750744	30.350989
G	-27.753804	30.351381
H	-27.756233	30.353092
I	-27.758593	30.352391
J	-27.758425	30.345094
K	-27.757794	30.342361
L	-27.735495	30.339552
M	-27.754969	30.328836
N	-27.756237	30.328458
O	-27.756921	30.326331
P	-27.750074	30.321838
Q	-27.744666	30.328175
R	-27.734041	30.328944
S	-27.728424	30.347946



PLAN PREPARED IN ACCORDANCE TO REGULATION 2 (2) OF THE MPRDA, 2002 (ACT NO 28 OF 2002)

Description of the land under application for PROSPECTING RIGHT:







The figure: A - R representing 1459.0867 hectares of land in extent being:

Portion 1 & Remaining Extent of GUMTREESPRUIT 424 HT

Utrecht District Municipality, KwaZulu-Natal



LEGENDS

Prospecting Area	
Farm Portions	
Roads	
Rail	
Perennial Water	
Perennial Rivers	
Contours	