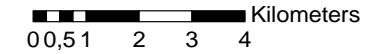


ONELE CONSTRUCTION AND CLEANING (PTY) LTD

REG NO: 2016/449522/07

Scale: 1:20 000



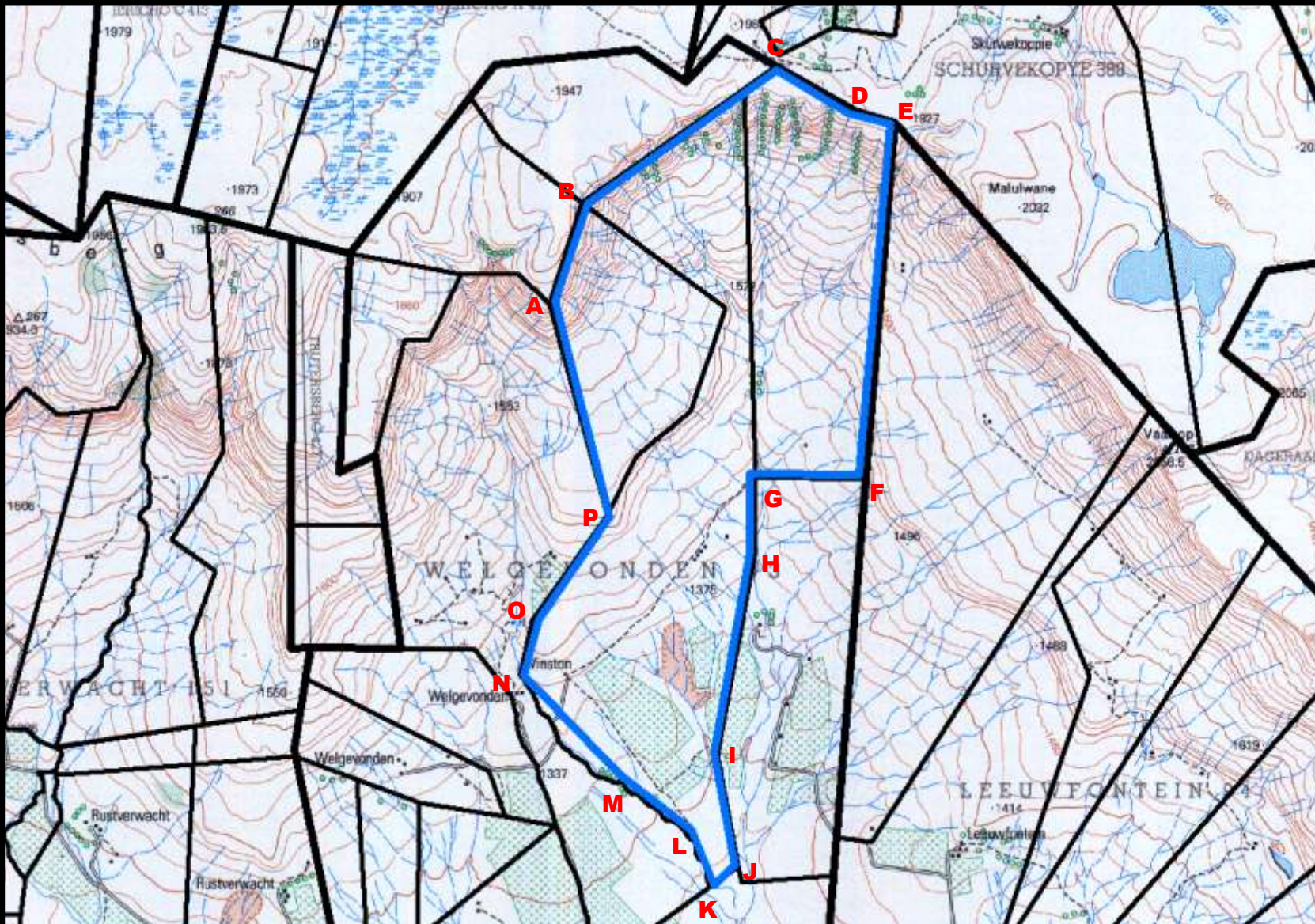
Geographic Coordinate System:

GCS_WGS_1984

Datum: D_WGS_1984

PROSPECTING BOUNDARY CO-ORDINATES

ID	LATITUDE	LONGITUDE
A	-27.537294	30.183939
B	-27.530338	30.186756
C	-27.520790	30.202122
D	-27.523920	30.208111
E	-27.524648	30.211249
F	-27.549780	30.208753
G	-27.549970	30.199876
H	-27.555722	30.199698
I	-27.570292	30.196845
J	-27.578319	30.198592
K	-27.579489	30.197059
L	-27.575791	30.195277
M	-27.571841	30.189537
N	-27.564509	30.181479
O	-27.560558	30.182620
P	-27.552941	30.188574



PLAN PREPARED IN ACCORDANCE TO REGULATION 2 (2) OF THE MPRDA, 2002 (ACT NO 28 OF 2002)

Description of the land under application for PROSPECTING RIGHT:

The figure: A - P representing 1325.333072 hectares of land in extent being:

Portion 6, 11, part of portion 2 of WELGEVONDEN 93 HT

Mafikeng District Municipality, KwaZulu-Natal



LEGENDS

- Prospecting Area**
- Farm Portions**
- Roads**
- Rail**
- Perennial Water**
- Perennial Rivers**
- Contours**