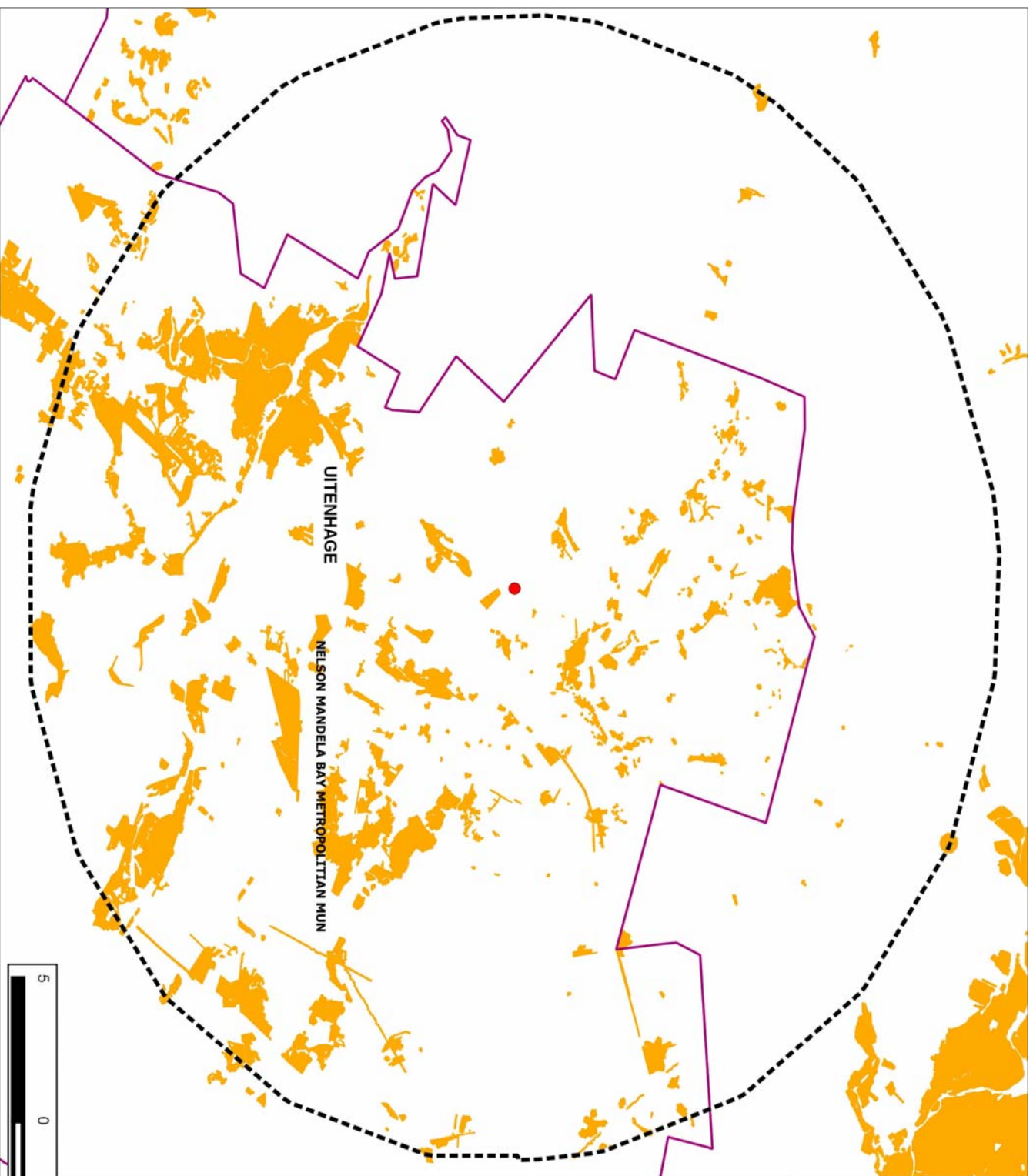


**PROPOSED SACE  
RANGER SOLAR PV  
(2.46MW) PLANT,  
UITENHAGE, EASTERN  
CAPE**

**REGIONAL MAP:  
AGRICULTURAL AREAS**

- Legend**
- SACE Ranger Solar PV Plant
  - 20km
  - ▭ Municipal Boundaries
  - ▭ Addo SRVM Landcover
  - ▭ Agriculture
  - ▭ NIMBM Landcover
  - ▭ Agric (cult)



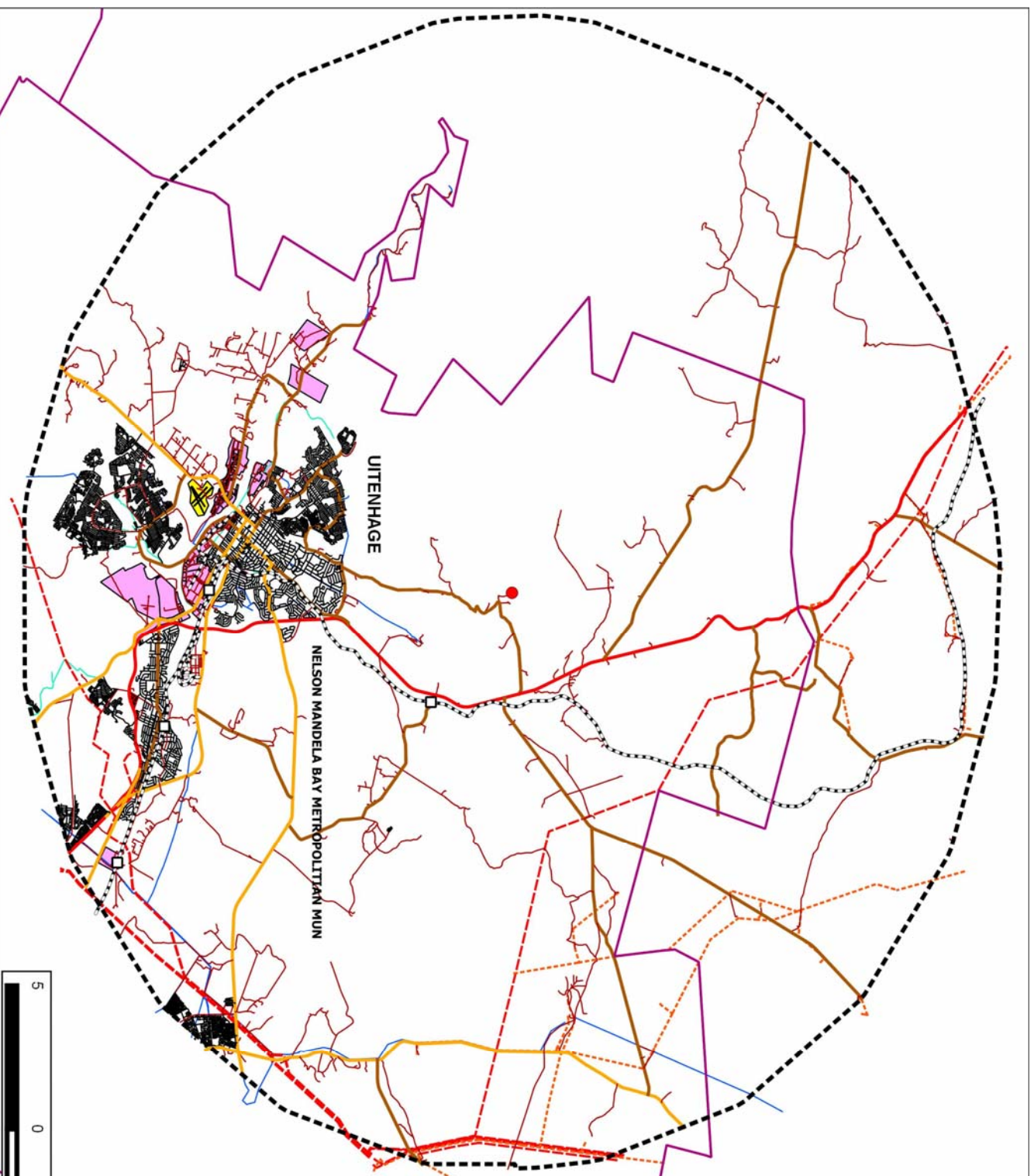
5 0 5 10 km

**PROPOSED SACE  
RANGER SOLAR PV  
(2.46MW) PLANT,  
UITENHAGE, EASTERN  
CAPE**

**REGIONAL MAP:  
INFRASTRUCTURE AND  
SERVICES**

**Legend**

- SACE Ranger Solar PV Plant
- 20km
- ▭ Municipal Boundaries
- Railway stations
- Railway
- Eskom MV Line
- Eskom HV Line
- Airtransport
- Sewerlines
- Water/Pipes
- Industrial Areas
- Roads SA Topo
- ARTERIAL ROUTE
- MAIN ROAD
- OTHER ACCESS
- SECONDARY ROAD
- STREET



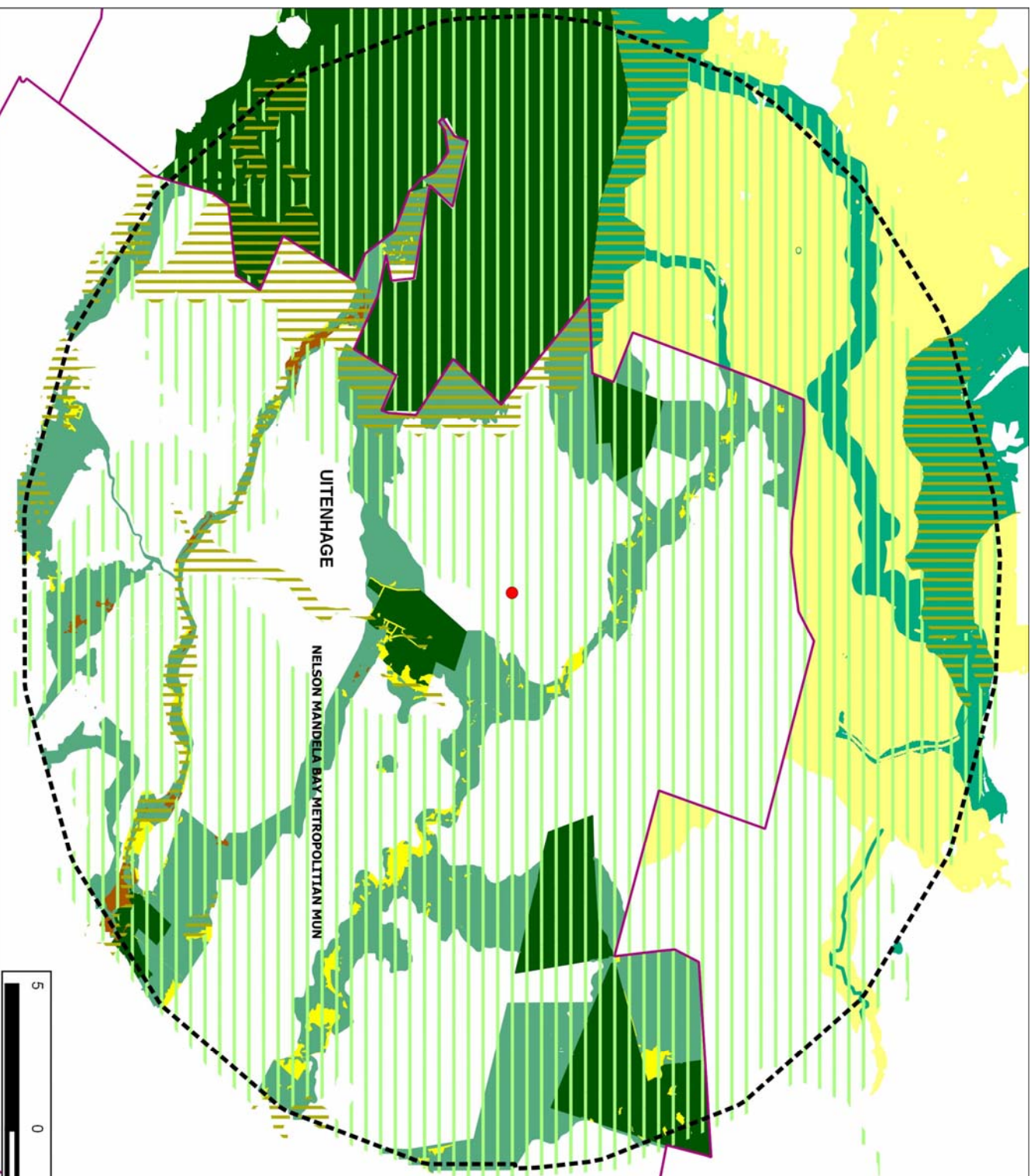


**PROPOSED SACE  
RANGER SOLAR PV  
(2.46MW) PLANT,  
UITENHAGE, EASTERN  
CAPE**

**REGIONAL MAP:  
CRITICAL BIODIVERSITY  
AREAS**

**Legend**

- SACE Ranger Solar PV Plant
- 20km
- ▭ Municipal Boundaries
- ▭ ECBGP CBAs
- ▭ CBA 1
- ▭ CBA 2
- ▭ Addo SRVM CBAs
- ▭ CBA
- ▭ ESA
- ▭ PA
- NIMBM CBAs
- ▭ CBA
- ▭ ESA1
- ▭ ESA2
- ▭ PA1



**PROPOSED SACE  
RANGER SOLAR PV  
(2.46MW) PLANT,  
UITENHAGE, EASTERN  
CAPE**

**REGIONAL MAP:  
CRITICALLY  
ENDANGERED &  
ENDANGERED  
VEGETATION**

**Legend**

- SACE Ranger Solar PV Plant
- 20km
- Municipal Boundaries
- ▨ NBA2011 Threatened Ecosystems
- ▨ Endangered
- ▨ NIMBM Vegstatus
- CRITICALLY ENDANGERED
- ENDANGERED

