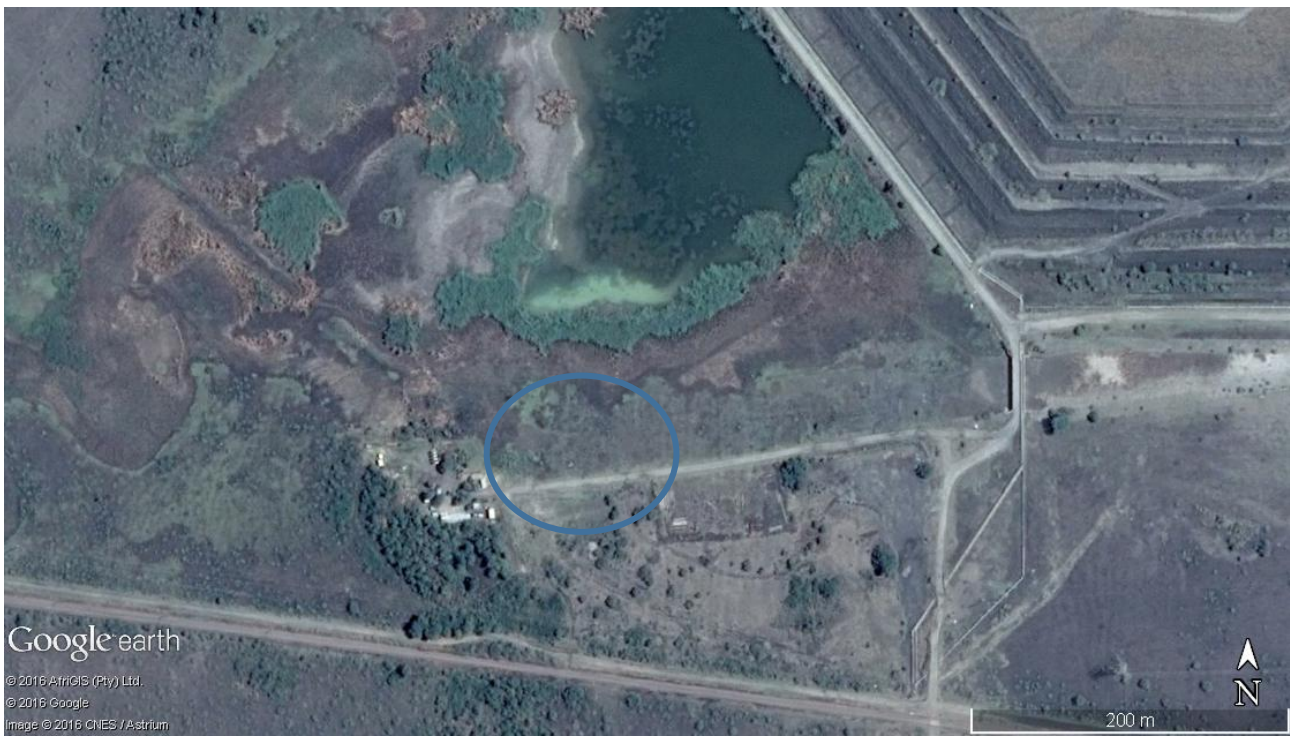


## **APPENDIX A: LOCALITY MAPS**



**Figure 1: Locality Map 1 of the K3 Dam Lonmin project area.**



**Figure 2: Locality Map 2 of the K3 Dam Lonmin project area.**

**APPENDIX B – SOCIAL ENGAGEMENT  
RECORD**

ENGAGEMENT	PERSON/GROUP	GRAVES CONCERNED	DATE	TOPIC DISCUSSED
K3 Graves Meeting	Family Representatives, Lonmin, Mr Coen Nienaber	All	11 February 2015	Meeting and introducing family representatives of affected graves. Number of graves affected discussed along with possible solutions. Families indicated that they wanted the graves to be relocated to 3 different areas
Meeting regarding the affected graves	Family Representatives, Lonmin, Mr Coen Nienaber	All	7 May 2015	Proposal to exhume and relocate the affected 10 graves. Discussed location of graves and possibility of a GPR Survey
Meeting at RWD, Tailings Dam 3	Community, Families, Mr Coen Nienaber and Lonmin	ALL	16 September 2015	Meeting with families South African legislation with regards to mining, graves and processes to be followed.  Documents and information needed form family representatives
Meeting regarding the affected graves	Family Representatives, Lonmin, Mr Coen Nienaber and Cherene De Bruyn	All	26 February 2016	Logging family information and cultural preferences.  Signing documents by commissioner of oaths and discussion on next processes to be followed