

ORREN CAPITAL (PTY) LTD

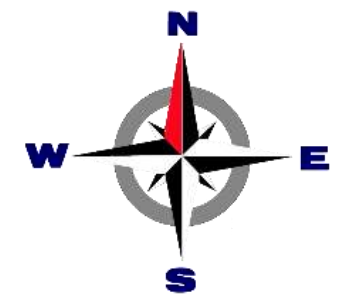
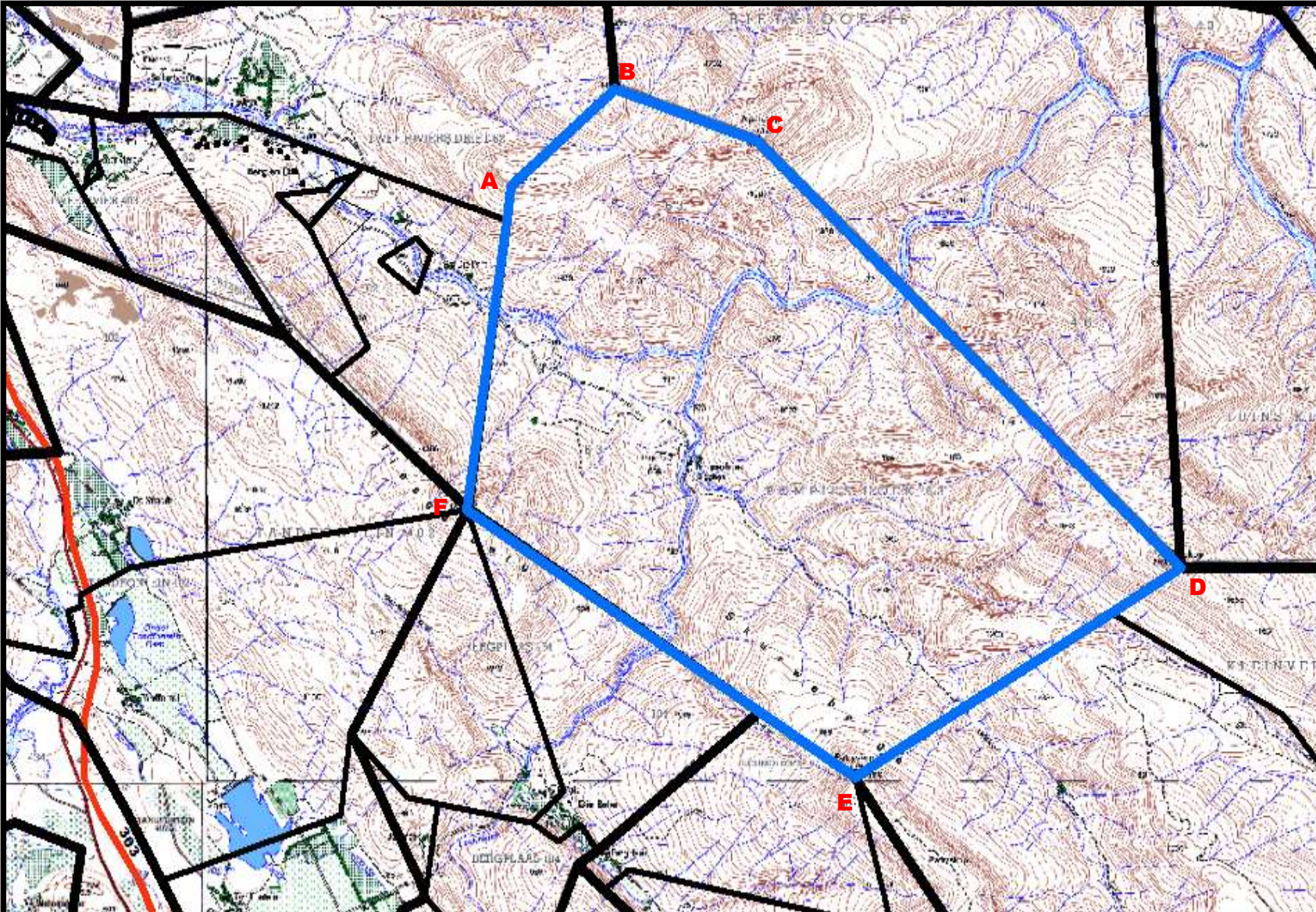
REG NO: 2020/865863/07

APPLICANT:

DATE:

PROSPECTING BOUNDARY CO-ORDINATES

	DATUM		WGS 84	
	LATITUDE	LONGITUDE	LATITUDE	LONGITUDE
A	-32.677263	19.291846		
B	-32.665663	19.306182		
C	-32.671909	19.325515		
D	-32.723722	19.383753		
E	-32.749122	19.338959		
F	-32.716524	19.286016		



PLAN PREPARED IN ACCORDANCE TO REGULATION 2 (2) OF THE MPRDA, 2002 (ACT NO 28 OF 2002)




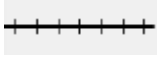

Description of the land under application for PROSPECTING RIGHT:

The figure: A - F representing 4766.27513304 hectares of land in extent being:

POMPIES HOEK 63

Cape Windands District Municipality, WESTERN CAPE

LEGENDS

- Prospecting Area** 
- Farm Portions** 
- Roads** 
- Rail** 
- Perennial Water** 
- Perennial Rivers** 