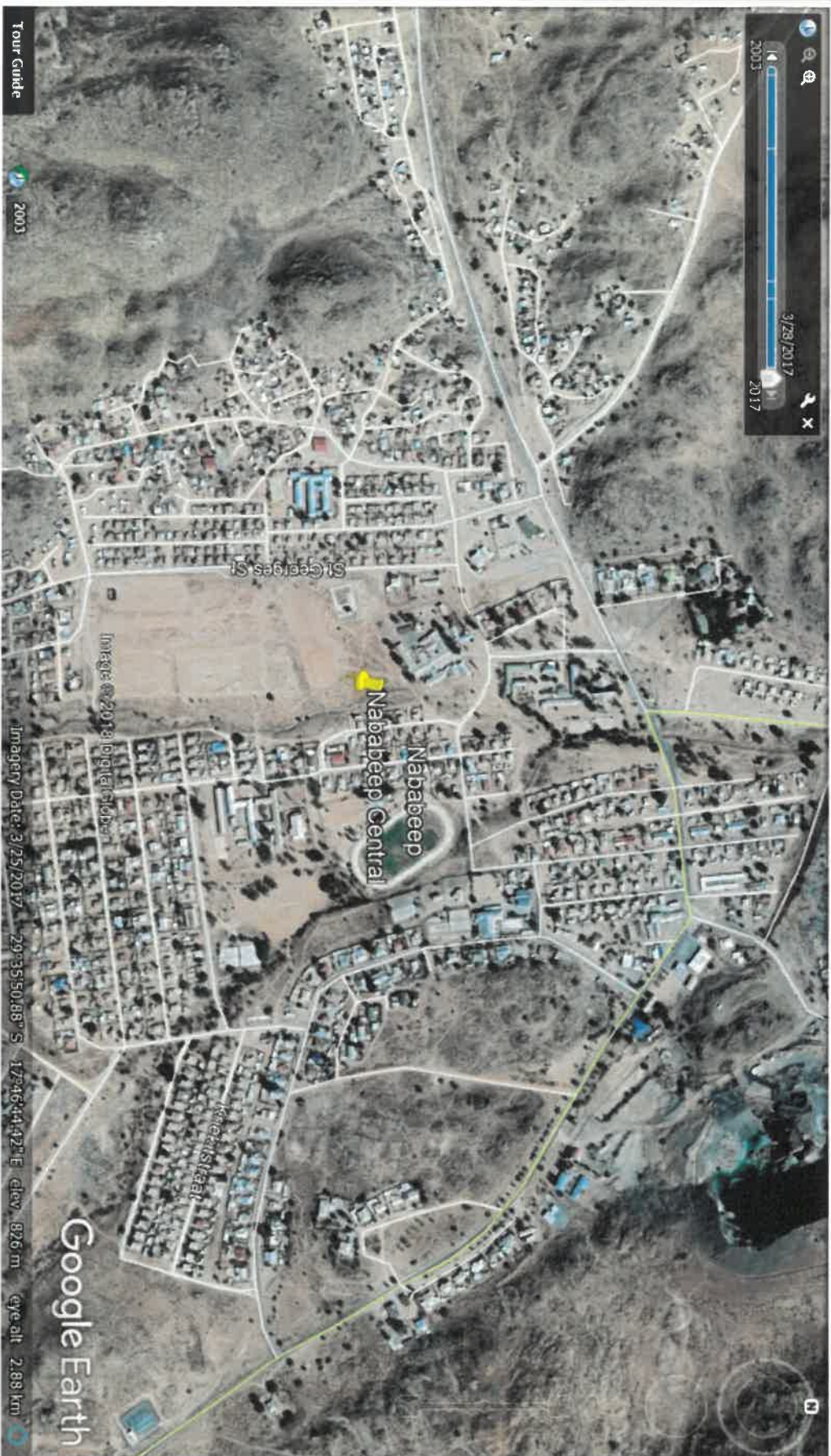


THE PROPOSED DEVELOPMENT OF A 25M HIGH TELECOMMUNICATIONS MAST ON ERF 588, ST. GEORGES STREET, NABABEEP, NORTHERN CAPE



SITE CO-ORDINATES

**29°35'37.78"S
17°46'55.64"E**

THE SITE



ENVIRO AFRICA REF:

1070

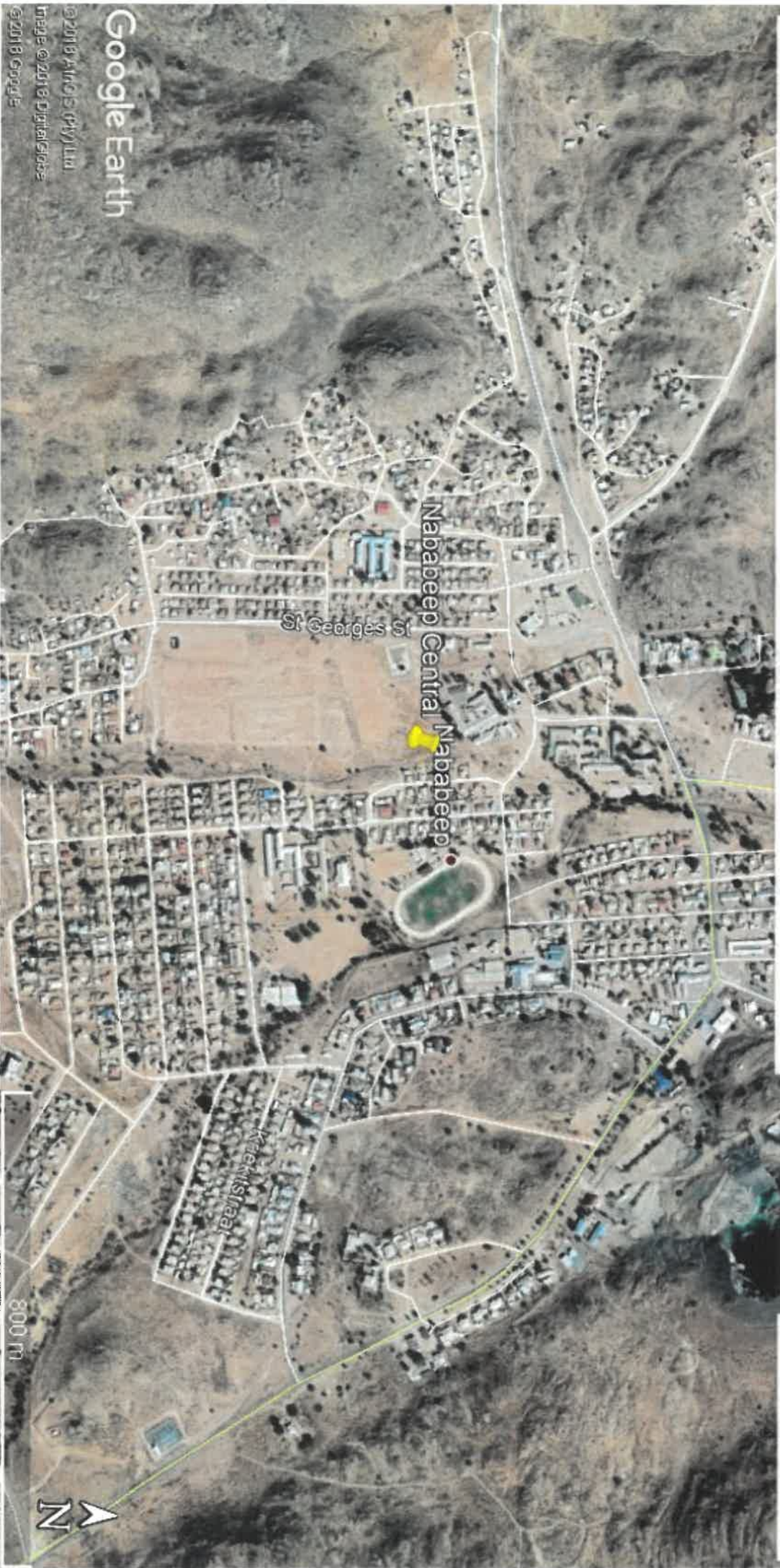
JUNE 2018



Environmental Assessments and Impact Assessments
21st Century Solutions

Locality Map

The proposed development of a 25m high telecommunication mast on Erf 588, Nababeep Central, Northern Cape



Legend

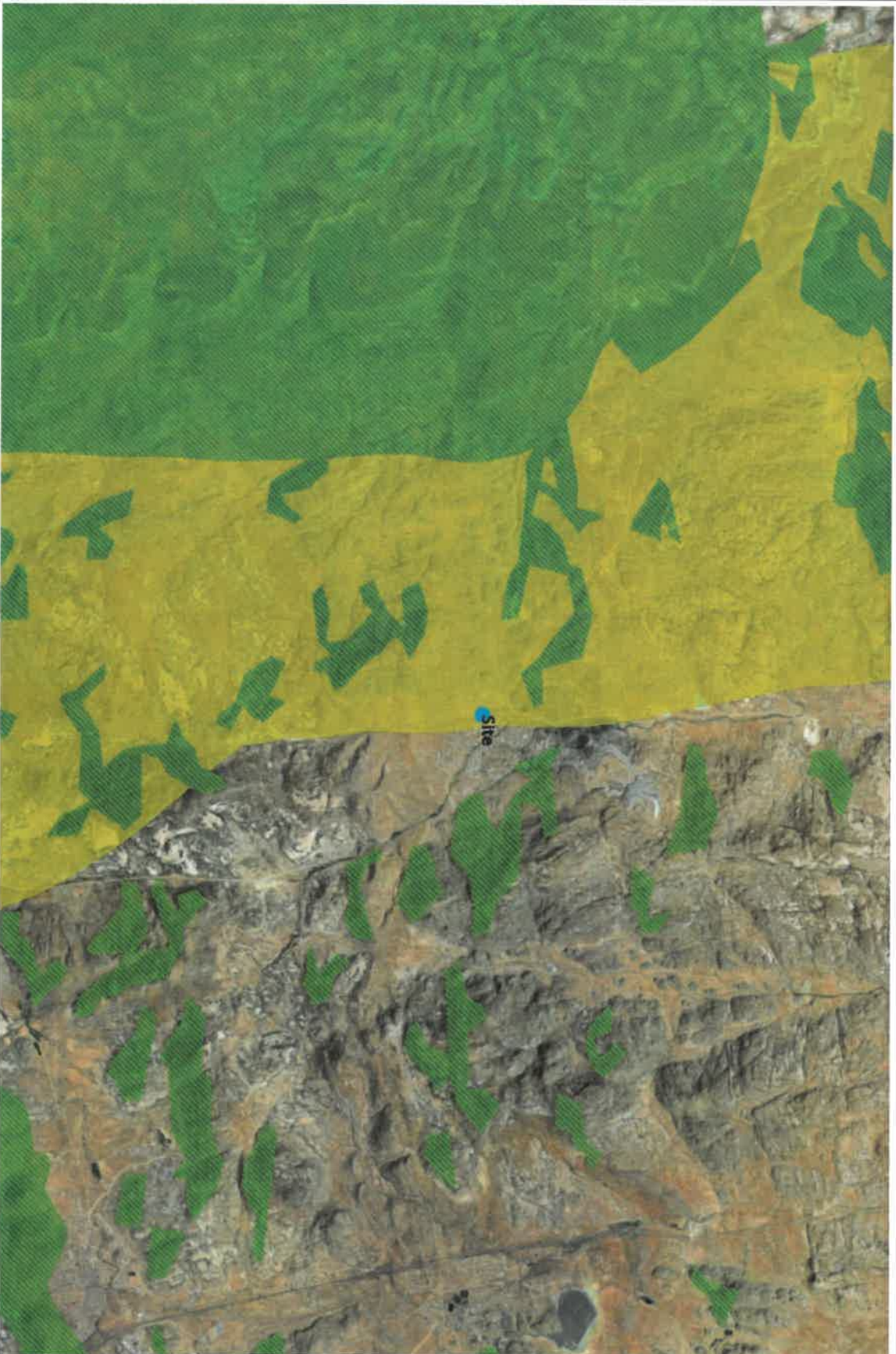


Nababeep Central

Google Earth

© 2018 Google
Image © 2018 DigitalGlobe
© 2018 Google

Biodiversity Overlay Map



Description
The proposed site is located within terrestrial Ecological Support Area ("ESA").

Legend

- Namakwa Biodiversity Sector Plan
- Local municipalities - LUDS
- Namakwa - Aquatic CBA map
- Critical Biodiversity Area (Type 1)
- Critical Biodiversity Area (Type 2)
- Ecological Support Areas
- Namakwa - Terrestrial CBA map
- Critical Biodiversity Area (Type 1)
- Critical Biodiversity Area (Type 2)
- Ecological Support Area
- Namakwa - Report Aquatic CBA map legend
- CBA aquatic (Type 1)
- CBA aquatic (Type 2)
- Ecological Support Areas aquatic

1 : 72 224



3.7 0 1.83 3.7 Kilometers

WGS_1984_Web_Mercator_Auxiliary_Sphere
© Latitude Geographics Group Ltd.

This map is a user generated static output from an internet mapping site and is for reference only. Data layers that appear on the map may or may not be accurate, current, or otherwise reliable.

THIS MAP IS NOT TO BE USED FOR NAVIGATION

