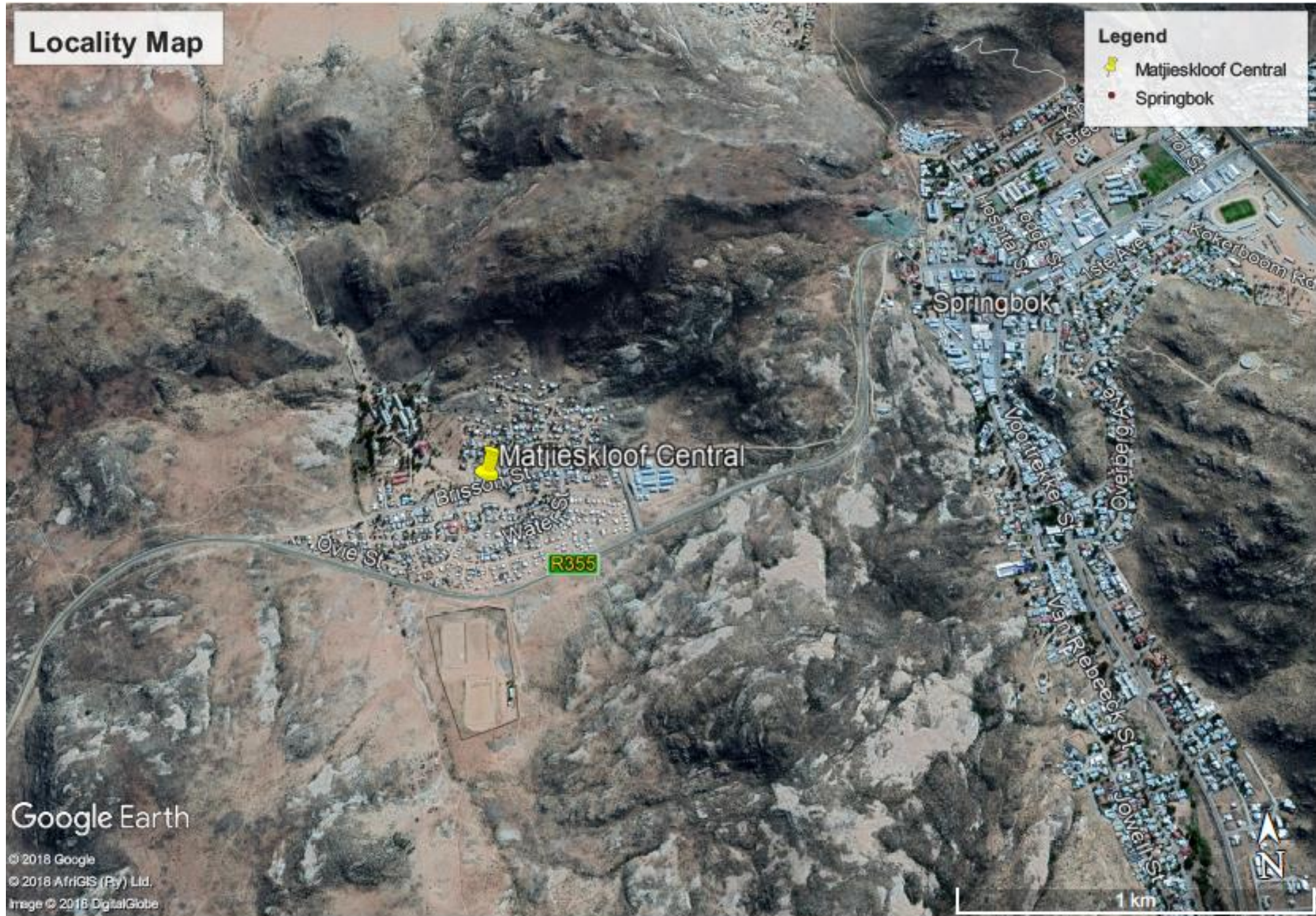


Locality Map

Legend

- 📍 Matjieskloof Central
- Springbok



Google Earth

© 2018 Google
© 2018 AfriGIS (Pty) Ltd.
Image © 2018 DigitalGlobe

Locality Map

Legend



Google Earth

© 2016 A/IGS (Pty) Ltd.
© 2016 Google
Image © 2016 DigitalGlobe

300 m

Locality Map

Legend

- 📌 Matjieskloof Central
- Springbok



2016 Northern Cape Critical Biodiversity Areas

Description

Proposed development of a 25m high telecommunications mast on Erf 2820, Matjieskloof, Springbok



Legend

Northern Cape Critical Biodiversity Areas 2016

- Critical Biodiversity Area One
- Critical Biodiversity Area Two
- Ecological Support Area
- Other Natural Areas
- Protected Area
- South African parent farm cadaster
- Formal protected areas (NBA 2011)
- Informal protected areas (NPAES)
- Marine Protected Areas MPAs (NBA 2011)
- Addo Biodiversity Conservation Plan
- Cape Winelands DMA Biodiversity Assessment
- Cape Town Biodiversity Network
- Central Karoo Biodiversity Assessment
- Eastern Cape Biodiversity Conservation Plan
- FSP Bergvliet
- FSP Breede Valley
- FSP Cederberg
- FSP Hesseque
- FSP Langeberg
- FSP Matzikama
- FSP Mossel Bay
- FSP Saldanha Bay
- FSP Witzenberg
- Garden Route Biodiversity Sector Plan
- Gauteng C Plan

1: 18 056



0,9 0 0,48 0,9 Kilometers

WGS_1984_Web_Mercator_Auxiliary_Sphere
© Latitude Geographics Group Ltd

This map is a user generated static output from an internet mapping site and is for reference only. Data layers that appear on this map may or may not be accurate, current, or otherwise reliable.

THIS MAP IS NOT TO BE USED FOR NAVIGATION



2016 Northern Cape Critical Biodiversity Areas



Description
Proposed development of a 25m high telecommunications mast on Erf 2820, Matjieskloof, Springbok

- Legend**
- Northern Cape Critical Biodiversity Areas 2016
 - Critical Biodiversity Area One
 - Critical Biodiversity Area Two
 - Ecological Support Area
 - Other Natural Areas
 - Protected Area
 - South African parent farm cadaster
 - Formal protected areas (NBA 2011)
 - Informal protected areas (NPAES)
 - Marine Protected Areas MPAs (NBA 2011)
 - Addo Biodiversity Conservation Plan
 - Cape Winelands DMA Biodiversity Assessment
 - Cape Town Biodiversity Network
 - Central Karoo Biodiversity Assessment
 - Eastern Cape Biodiversity Conservation Plan
 - FSP Bergrivier
 - FSP Breede Valley
 - FSP Cederberg
 - FSP Hesseque
 - FSP Langeberg
 - FSP Matzikama
 - FSP Mossel Bay
 - FSP Saldanha Bay
 - FSP Witzberg
 - Garden Route Biodiversity Sector Plan
 - Gauteng C Plan

1: 4 514



0,2 0 0,11 0,2 Kilometers
WGS_1984_Web_Mercator_Auxiliary_Sphere
© Latitude Geographics Group Ltd.

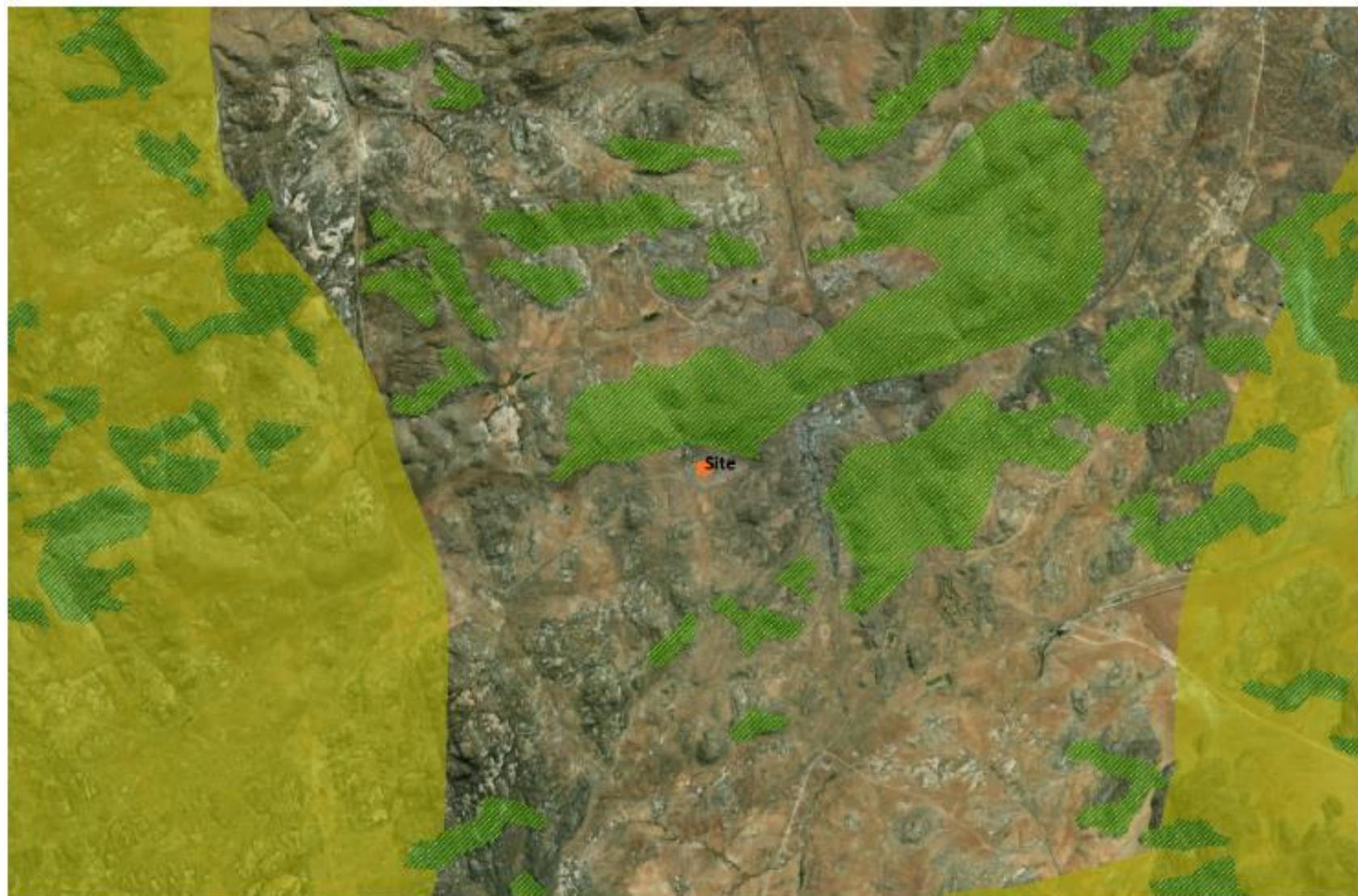
This map is a user generated static output from an internet mapping site and is for reference only. Data layers that appear on this map may or may not be accurate, current, or otherwise reliable.

THIS MAP IS NOT TO BE USED FOR NAVIGATION

Biodiversity Overlay Map

Description

Proposed development of 25m high telecommunication mast on Erf 2820, Matjieskloof, Springbok, Northern Cape



Legend

- Namakwe Biodiversity Sector Plan
- Local municipalities - LUDS
- Namakwe - Aquatic CBA map**
 - Critical Biodiversity Area (type 1)
 - Critical Biodiversity Area (type 2)
 - Ecological Support Areas
- Namakwe - Terrestrial CBA map**
 - Critical Biodiversity Area (type 1)
 - Critical Biodiversity Area (type 2)
 - Ecological Support Area
- Namakwe - Report Aquatic CBA map legend**
 - CBA Aquatic (type 1)
 - CBA Aquatic (type 2)
 - Ecological Support Areas aquatic

1: 72 224



3,7 0 1,83 3,7 Kilometers

WGS_1984_Web_Mercator_Auxiliary_Sphere
© Latitude Geographica Group Ltd

This map is a user generated static output from an internet mapping site and is for reference only. Data layers that appear on this map may or may not be accurate, current, or otherwise reliable.

THIS MAP IS NOT TO BE USED FOR NAVIGATION



Namakwa District Critical Biodiversity Areas (CBAs) Map

Description

The proposed development of a 25m high telecommunications mast on Erf 2820, 41 Briston Street, Matjieskloof, Springbok, Northern Cape



Legend

- Namakwa Biodiversity Sector Plan
- Local municipalities - LUDS
- Namakwa - Aquatic CBA map**
 - Critical Biodiversity Area (type 1)
 - Critical Biodiversity Area (type 2)
 - Ecological Support Areas
- Namakwa - Terrestrial CBA map**
 - Critical Biodiversity Area (type 1)
 - Critical Biodiversity Area (type 2)
 - Ecological Support Areas
- Namakwa - Report Aquatic CBA map legend**
 - CBA aquatic (type 1)
 - CBA aquatic (type 2)
 - Ecological Support Areas aquatic
- World Street Map

1: 9 028



0,5 0 0,25 0,5 Kilometers

WGS_1984_Web_Mercator_Auxiliary_Sphere
© Latitude Geographics Group Ltd.

This map is a user generated static output from an internet mapping site and is for reference only. Data layers that appear on this map may or may not be accurate, current, or otherwise reliable.

THIS MAP IS NOT TO BE USED FOR NAVIGATION

