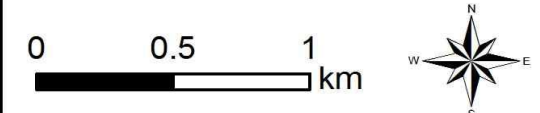


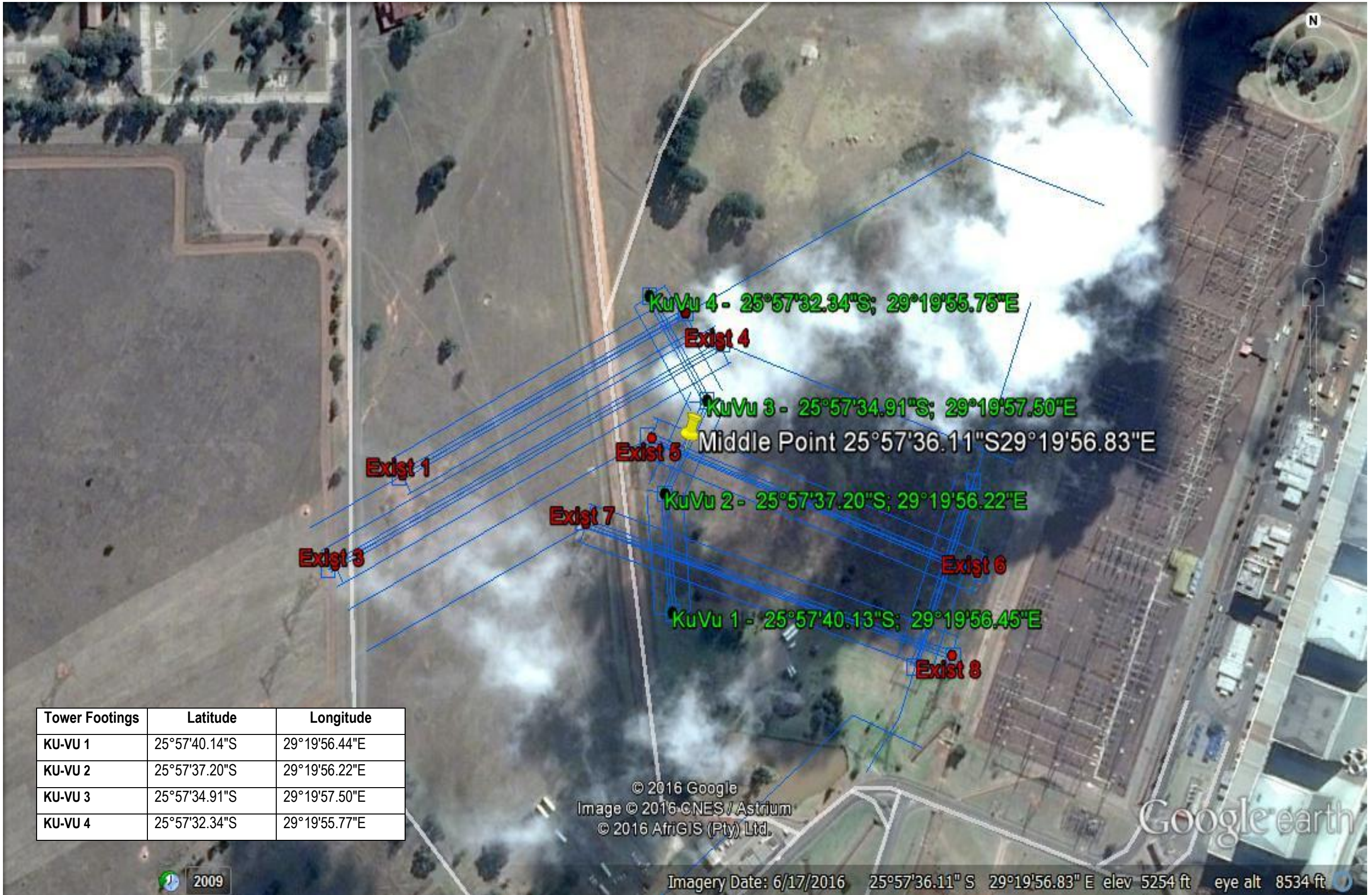
**PHASE 5
DUVHA BYPASS
LOCALITY MAP**

Legend

- Towers
- Duvha Bypass
- Railway Lines
- National Route
- Arterial Route
- Main Road



Duvha By-Pass Coordinates		
	Latitude	Longitude
Starting Point (SP)	25°57'40.13"S	29°19'56.45"E
Middle Point (MP)	25°57'36.11"S	29°19'56.83"E
End Point (EP)	25°57'32.34"S	29°19'55.75"E



KuVu 4 - 25°57'32.34"S; 29°19'55.75"E

Exist 4

KuVu 3 - 25°57'34.91"S; 29°19'57.50"E

Middle Point 25°57'36.11"S 29°19'56.83"E

Exist 5

KuVu 2 - 25°57'37.20"S; 29°19'56.22"E

Exist 7

Exist 6

KuVu 1 - 25°57'40.13"S; 29°19'56.45"E

Exist 8

Exist 1

Exist 3

Tower Footings	Latitude	Longitude
KU-VU 1	25°57'40.14"S	29°19'56.44"E
KU-VU 2	25°57'37.20"S	29°19'56.22"E
KU-VU 3	25°57'34.91"S	29°19'57.50"E
KU-VU 4	25°57'32.34"S	29°19'55.77"E

© 2016 Google
Image © 2016 CNES / Astrium
© 2016 AfriGIS (Pty) Ltd.

Google earth

2009

Imagery Date: 6/17/2016 25°57'36.11" S 29°19'56.83" E elev 5254 ft eye alt 8534 ft