



# OLIPHANTS HOUSING ESTATE

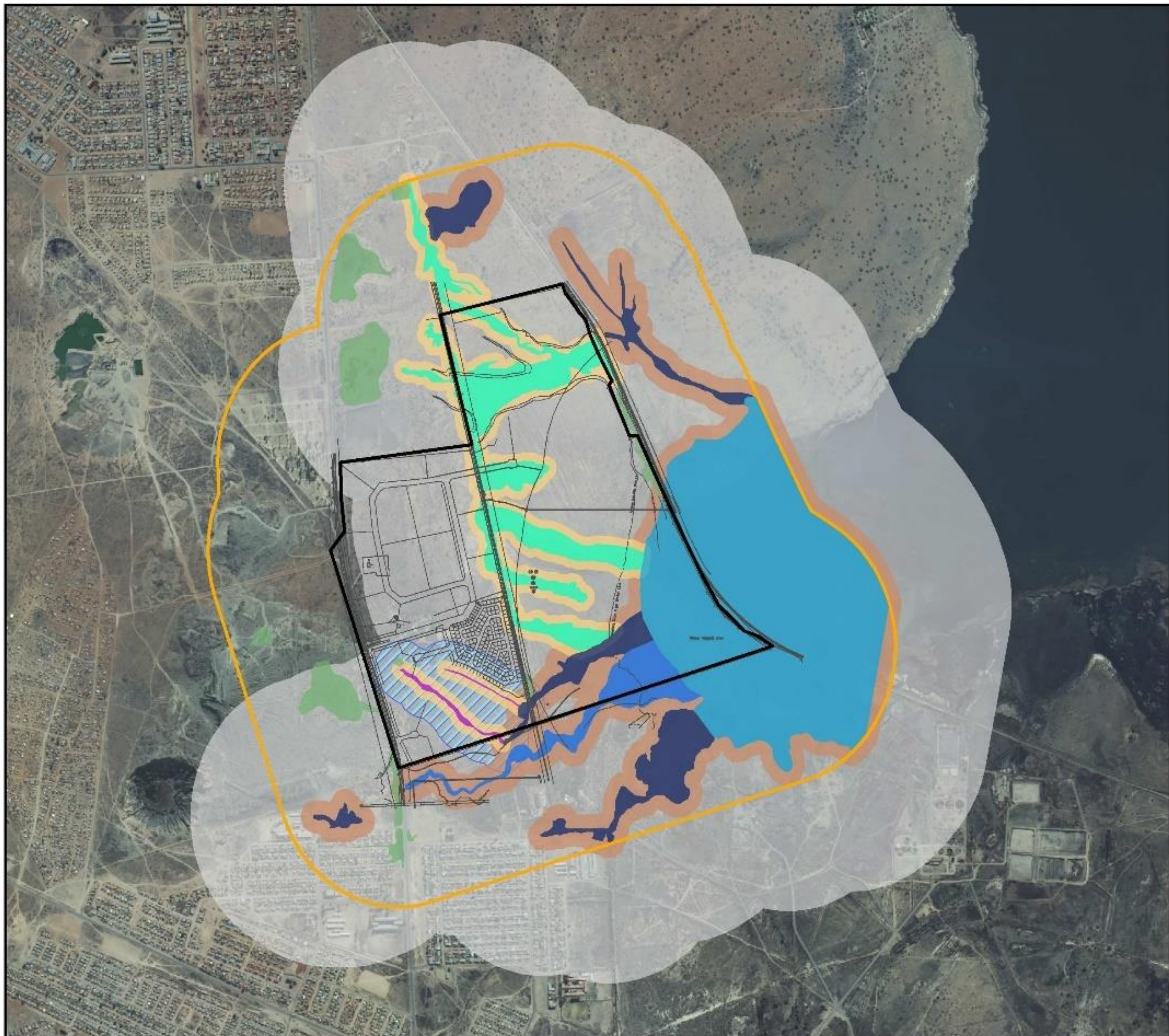
## HYDROLOGY

### Legend

-  Non Perennial River
-  Perennial River
-  Site Boundary
-  Wetlands (NBA2018)

1:25 000





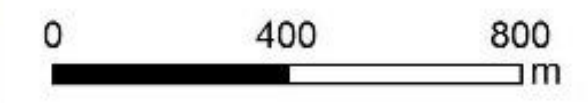
**OLIPHANTS HOUSING ESTATE**

**WETLAND DELINEATION & LAYOUT**

**Legend**

- Layout
- ▭ Site Boundary
- ▭ Area of Investigation
- ▭ Artificial Wetland
- ▭ Channelled Valley Bottom
- ▭ Drainage Line
- ▭ Pan
- ▭ UVB with artificial component
- ▭ Unchannelled Valley Bottom
- ▭ 30m Calculated Buffer
- ▭ 50m Calculated Buffer
- ▨ 100m DWS Regulated Area
- ▭ 500m DWS Regulated Area

1:18 000





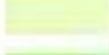





# OLIPHANTS HOUSING ESTATE

## CBA

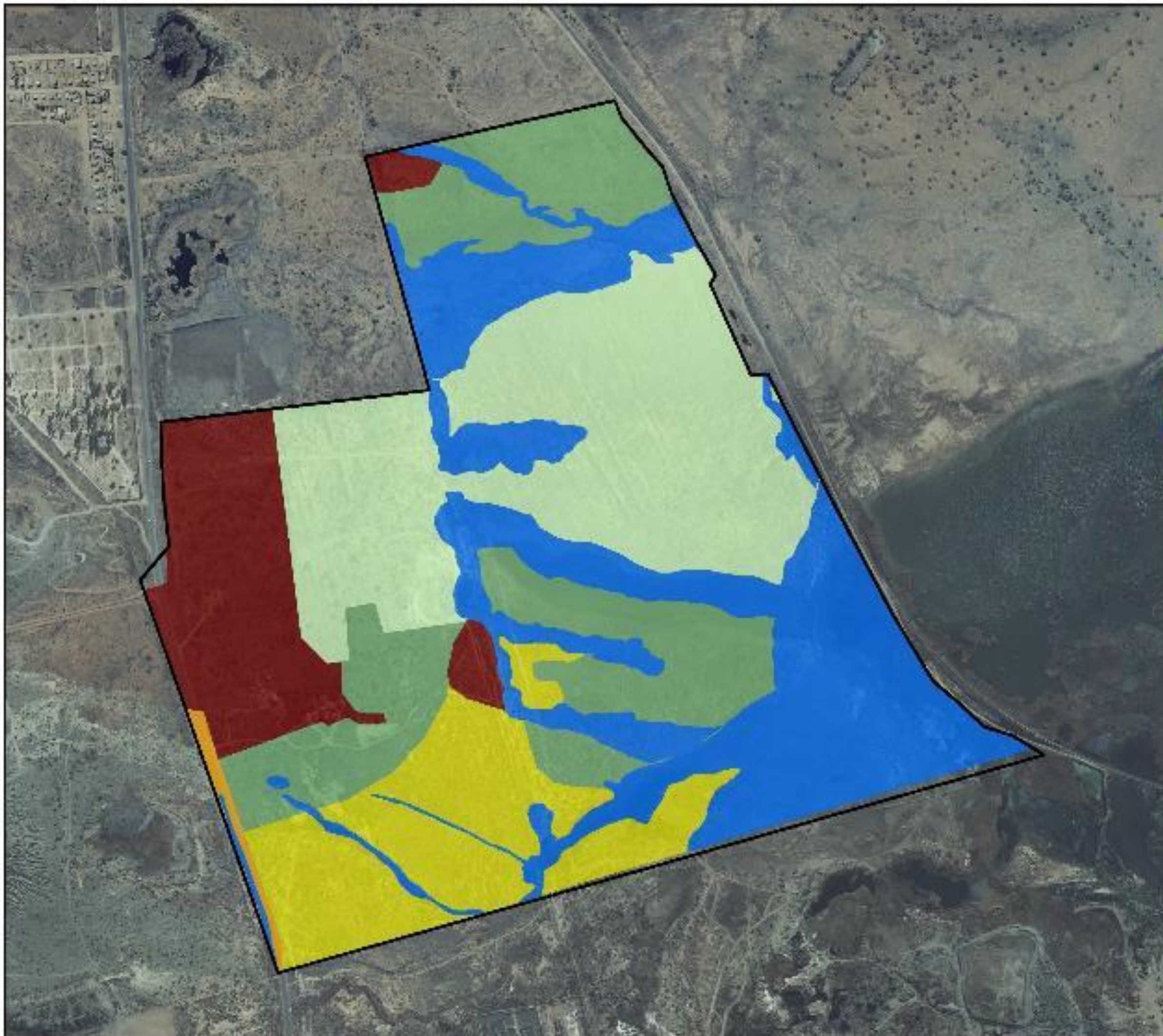
### Legend

-  Site Boundary
-  Critical Biodiversity Area One
-  Critical Biodiversity Area Two
-  Ecological Support Area
-  Other Natural Areas
-  Protected Area

1:25 000



0 0.5 1 km



**OLIPHANTS  
HOUSING ESTATE**

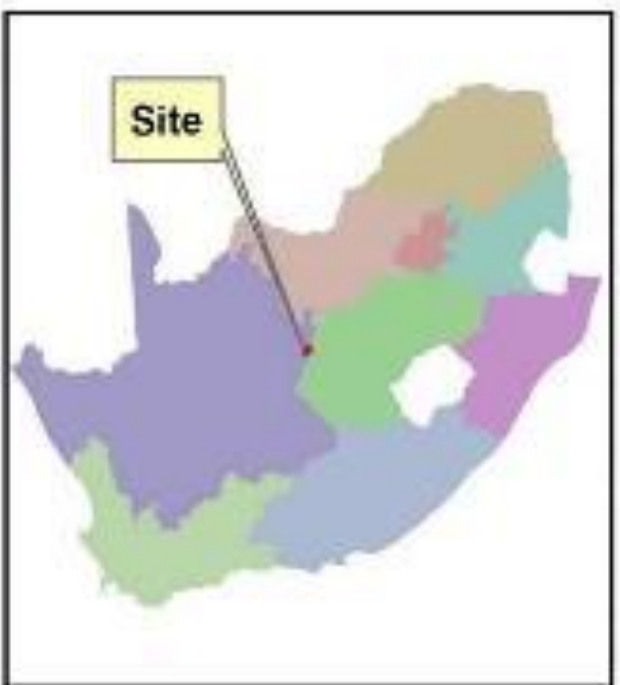
**BROAD  
VEGETATION COMMUNITY**

**Legend**

-  Site Boundary
-  Degraded Prosopis area
-  Disturbed Open Shrubveld
-  Highly transformed area
-  Mine dump
-  Old Field Secondary Grassland
-  Wetland







1:10 000





**KIMBERLEY  
VEGETATION SENSITIVITY**

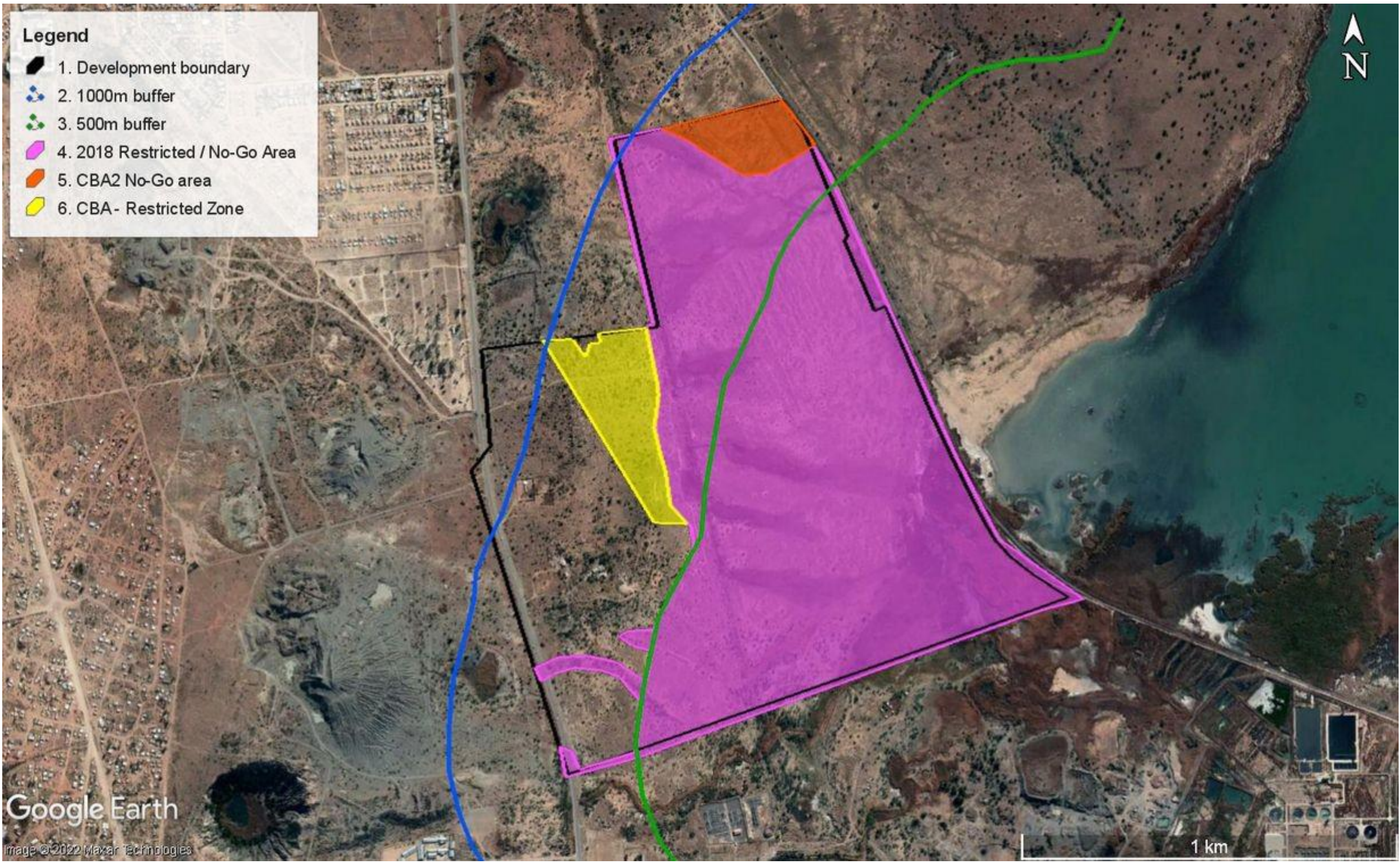
**Legend**

-  Railway Lines
-  Kimberley
- Vegetation Sensitivity**
-  High
-  Medium-High
-  Medium-Low
-  Low

1:17 000



# FAUNA SENSITIVITY MAP



# AVIFAUNA SENSITIVITY MAP

## Oliphants Estate Residential Development

### Legend

1000m Buffer\_High Sensitivity Area



500m Buffer\_No Go Area



Kamfers Dam



Olifants Estate Development Area



PAOI\_2km Buffer



### SOURCES

Envirolution Consulting (Pty) Ltd

21 January 2022 & 22 April 2022

SANBI, 2020



0

1

2 km



Feathers Environmental  
Services

PO Box 786962

Sandton, 2146

082 683 0970

megan@feathersenv.co.za

www.feathersenv.co.za