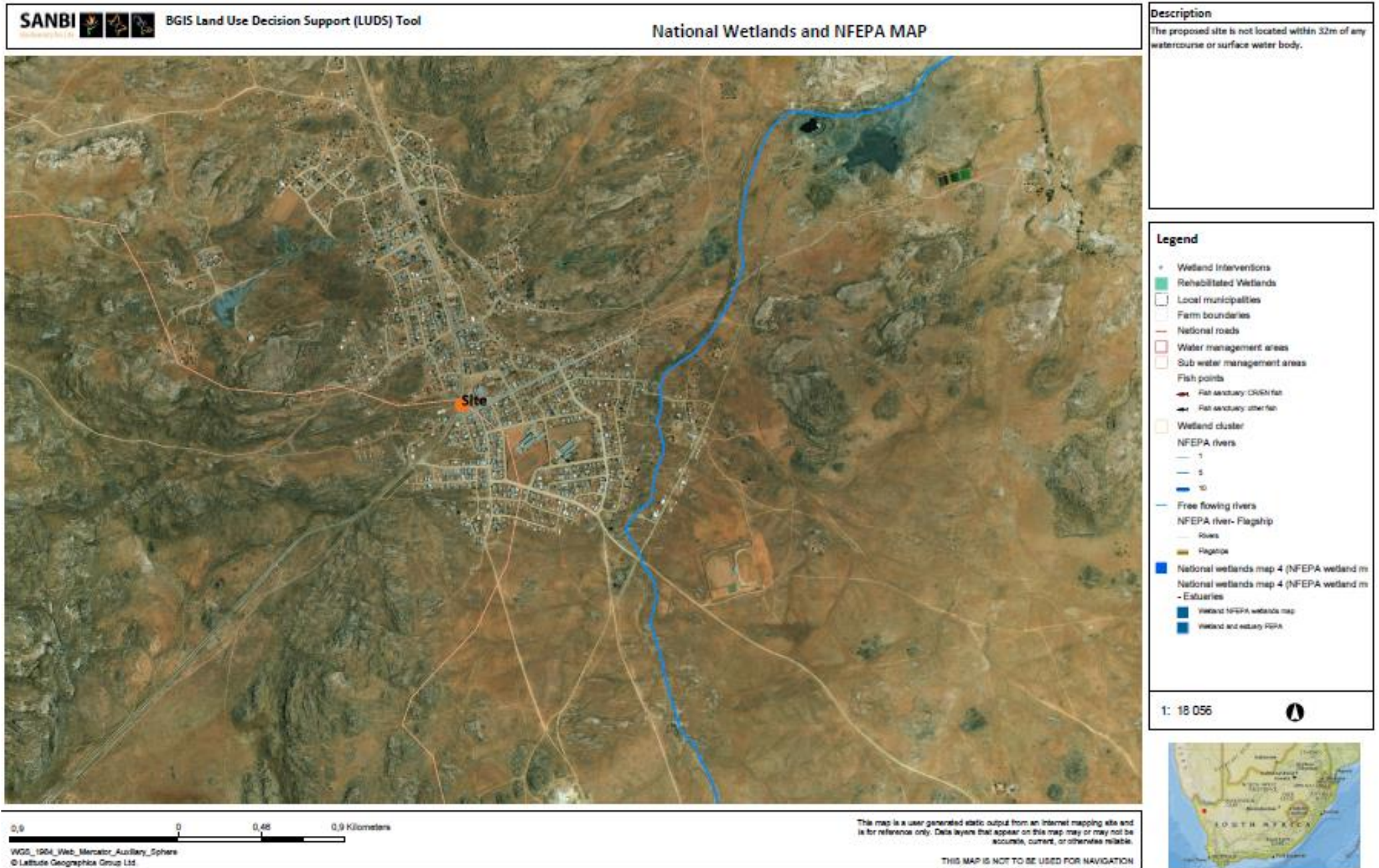
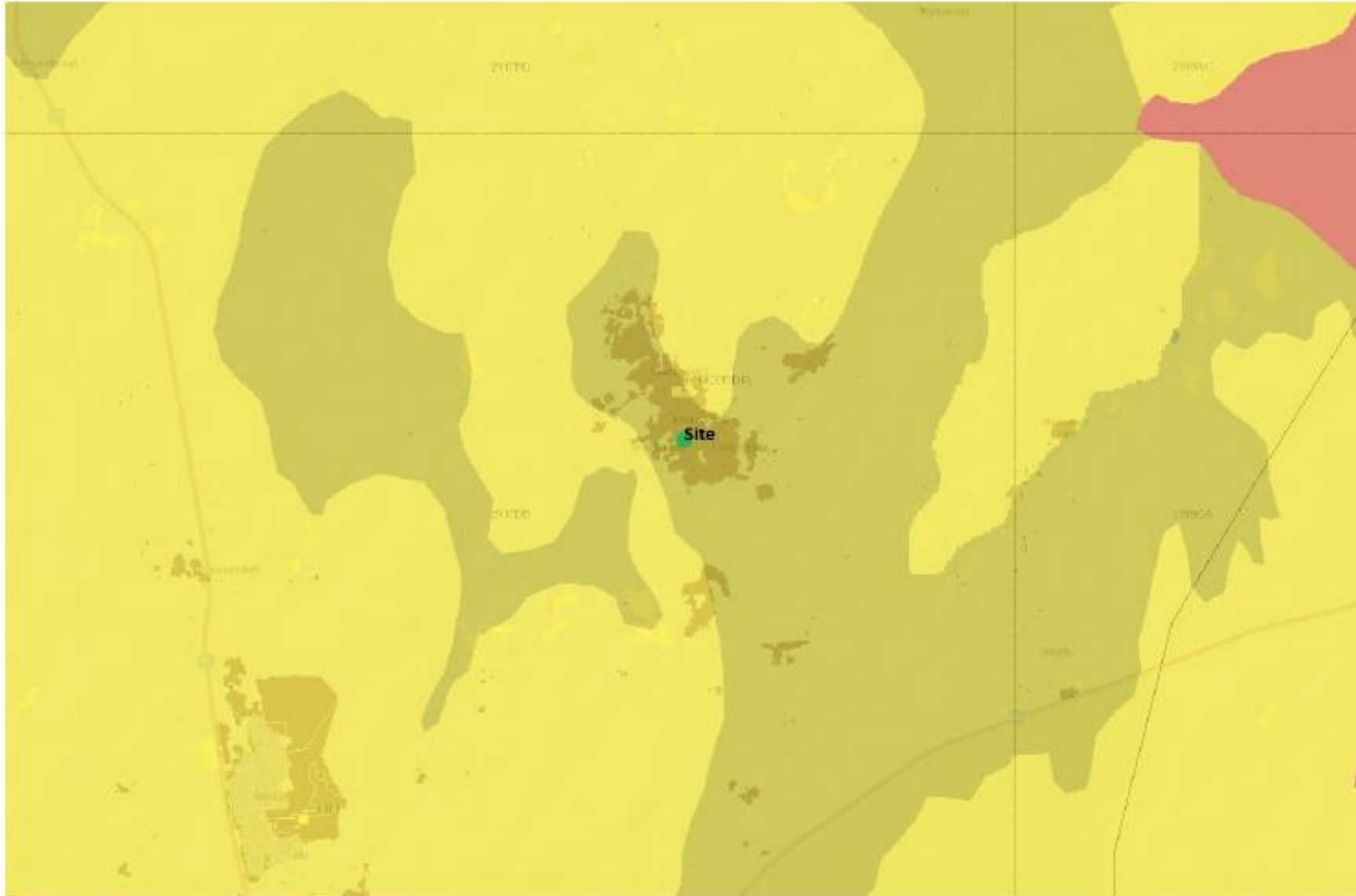


APPENDIX A2: NFEPA MAP; NATIONAL VEGETATION MAP; PROTECTED AREAS MAP



Description

The proposed site would historically be covered with Namaqualand Blomveld.



Legend

National Vegetation Map 2012 beta 2

- Rfa 1 Bokkeveld Sandstone Fynbos
- Rfa 2 Grootwater Sandstone Fynbos
- Rfa 3 Olifants Sandstone Fynbos
- Rfa 4 Cedarberg Sandstone Fynbos
- Rfa 5 Waterhoek Sandstone Fynbos
- Rfa 6 Piesberg Sandstone Fynbos
- Rfa 7 North Haas Sandstone Fynbos
- Rfa 8 South Haas Sandstone Fynbos
- Rfa 9 Perisus Sandstone Fynbos
- Rfa 10 Horekwa Sandstone Fynbos
- Rfa 11 Hogeburg Sandstone Fynbos
- Rfa 12 Overberg Sandstone Fynbos
- Rfa 13 North Sanderend Sandstone Fynbos
- Rfa 14 South Sanderend Sandstone Fynbos
- Rfa 15 North Langeberg Sandstone Fynbos
- Rfa 16 South Langeberg Sandstone Fynbos
- Rfa 17 Robberg Sandstone Fynbos
- Rfa 18 North Outeniqua Sandstone Fynbos
- Rfa 19 South Outeniqua Sandstone Fynbos
- Rfa 20 Tablemount Sandstone Fynbos
- Rfa 21 North Rooiberg Sandstone Fynbos
- Rfa 22 South Rooiberg Sandstone Fynbos
- Rfa 23 North Swartberg Sandstone Fynbos
- Rfa 24 South Swartberg Sandstone Fynbos
- Rfa 25 North Kammannasse Sandstone Fynbos

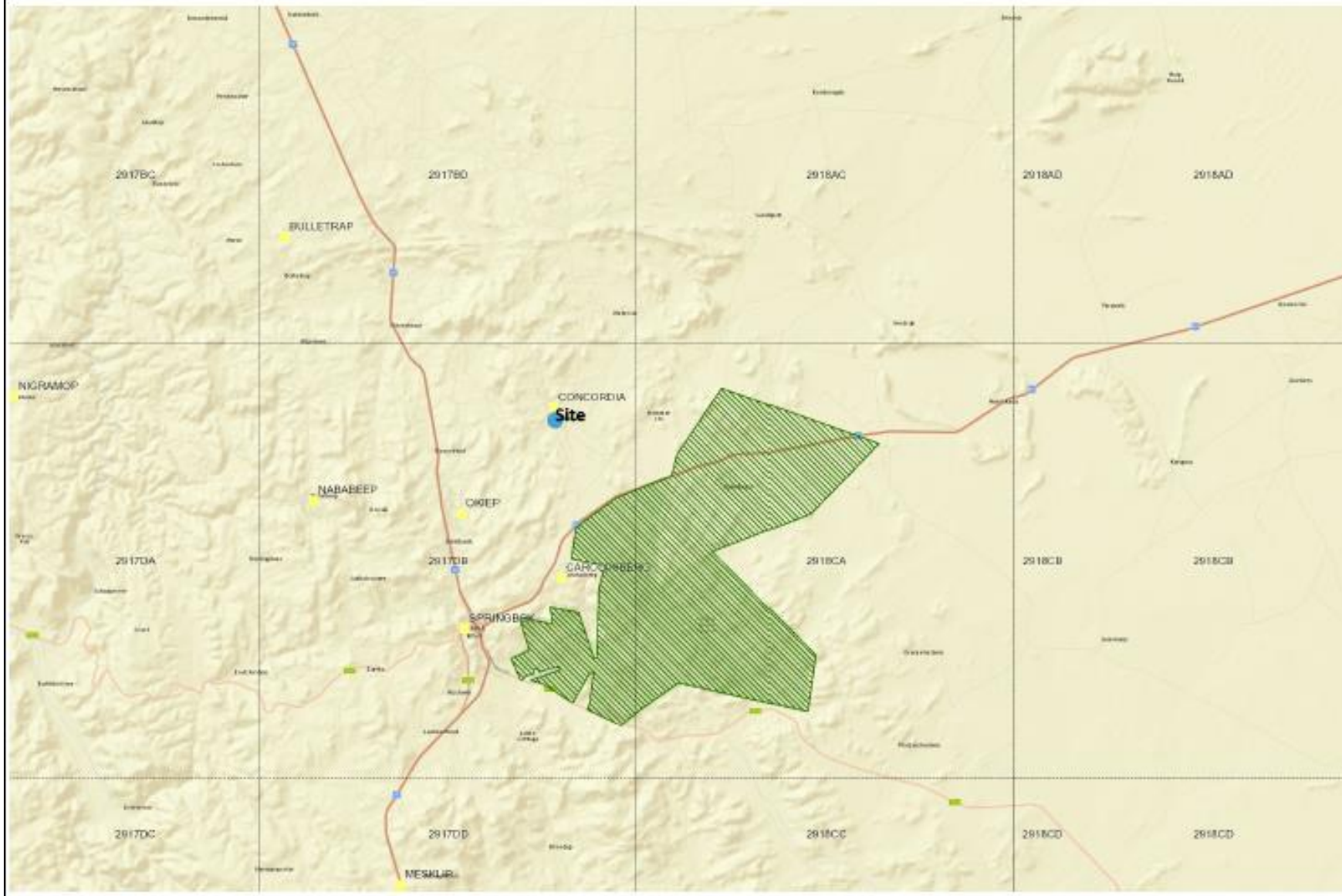
1: 72 224



0 1,83 3,7 Kilometers










National Protected Areas Map



Description

The proposed site (blue dot) is not located within a protected area.

Legend

-  Quarter-degree grid squares
-  South Africa town points
-  National parks (NBA 2011)
-  Formal protected areas (NBA 2011)
-  Informal protected areas (NPAES)
-  Marine Protected Areas (MPAs) (NBA 2011)
-  World Street Map

1: 288 895

