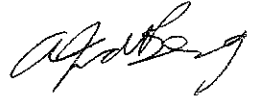


SUBDIVISIONAL DIAGRAM

SIDES Metres		ANGLES OF DIRECTION	CO-ORDINATES Y System: WG25° X		
AB	88,27	Constants: 313 53 40	A	0,00	+2 900 000,00
BC	358,49	27 12 00	B	+ 28 012,79	+ 83 487,39
CD	218,28	138 31 30	C	+ 27 949,18	+ 83 548,59
DA	326,82	228 30 50	D	+ 28 113,04	+ 83 867,44
NGK OOS VRYBURG RESERVIOR (87)			△	+ 25 547,59	+ 82 793,81
RESERVIOR (88)			△	+ 25 066,74	+ 85 829,33

S.G. No.
2393/2012

Approved

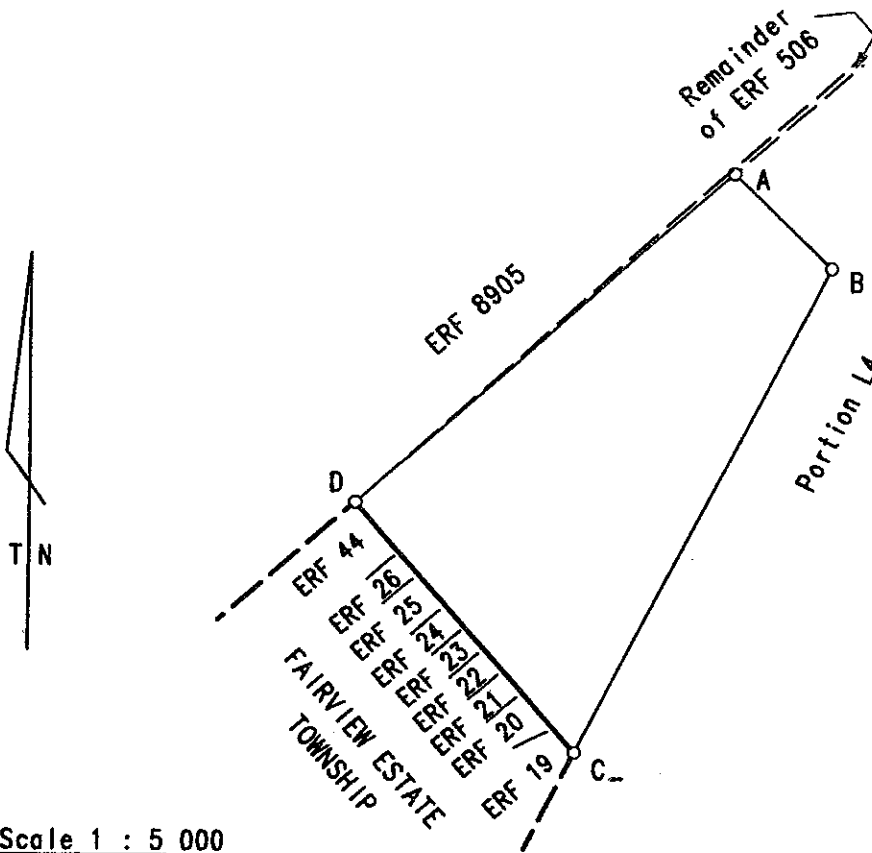


for
SURVEYOR-
GENERAL
2012-07-09

Ord. 15/1985
Section 24
Letter and Plan

Beacon Descriptions

A,B : Iron Standard
C,D : 12mm Round Iron peg



Scale 1 : 5 000

The figure A B C D A

represents

5,0823 hectares

of land being

ERF 11883 (a portion of ERF 506) VRYBURG TOWNSHIP

Province : North West

Surveyed in February and August 2006
and March 2012 by me



H. KADERLI PLS 1035
Professional Land Surveyor

This diagram is
annexed to
No.
d.d.
i.f.o.

Registrar of Deeds
Vryburg

The original diagram is
S.G. No. B25/1917
Transfer
Grant

File 1-5643
S.R.930/2012
G.P.
Comp. IN 8C-20/C2
IN8C-20/A4