

# Gas Transmission Pipeline, Nigel, Gauteng Province

## Environmental Sensitivity Map: Section 1

### Legend

- Main Road
- Existing Gas Transmission Pipeline
- Pipeline Route C
- Affected Farm Portions
- Erf
- Farm Portion

### Environmental Sensitivities

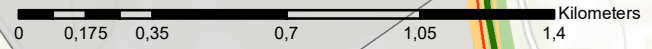
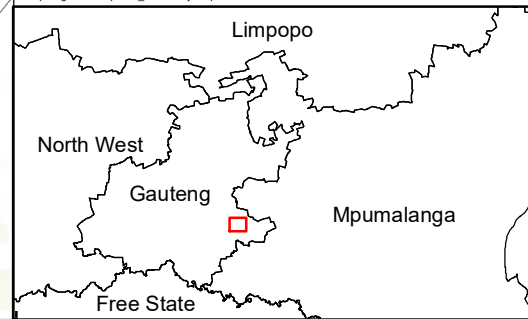
- ★ Heritage Site (Historical Period Settlement: NGP-HP01)
- Heritage Site (Burial Site: NGP-BP02)
- Wetland (High Sensitivity)
- Wetland (Moderate Sensitivity)
- Wetland (Low Sensitivity)
- Wetland (Very Low Sensitivity)

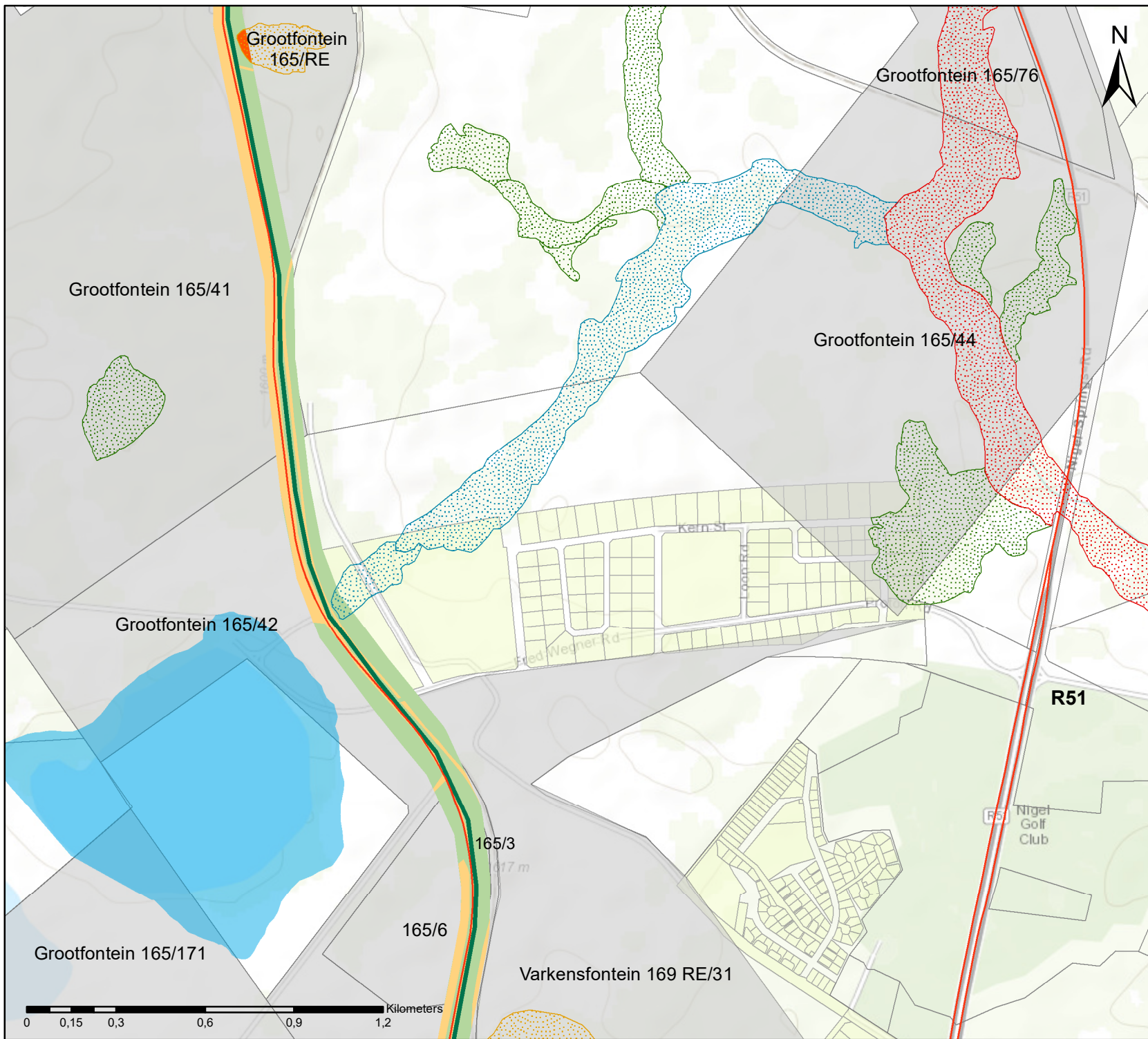
### Ecological Sensitivities

- HIGH
- LOW
- NEGLIGIBLE



Scale: 1  
 Projection: LO29 WGS\_1984  
 Map: Nigel Gas Pipeline\_Sensitivity Map 05.05.19





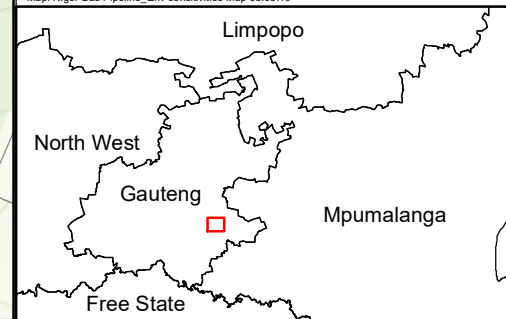
# Gas Transmission Pipeline, Nigel, Gauteng Province

## Environmental Sensitivity Map: Section 2

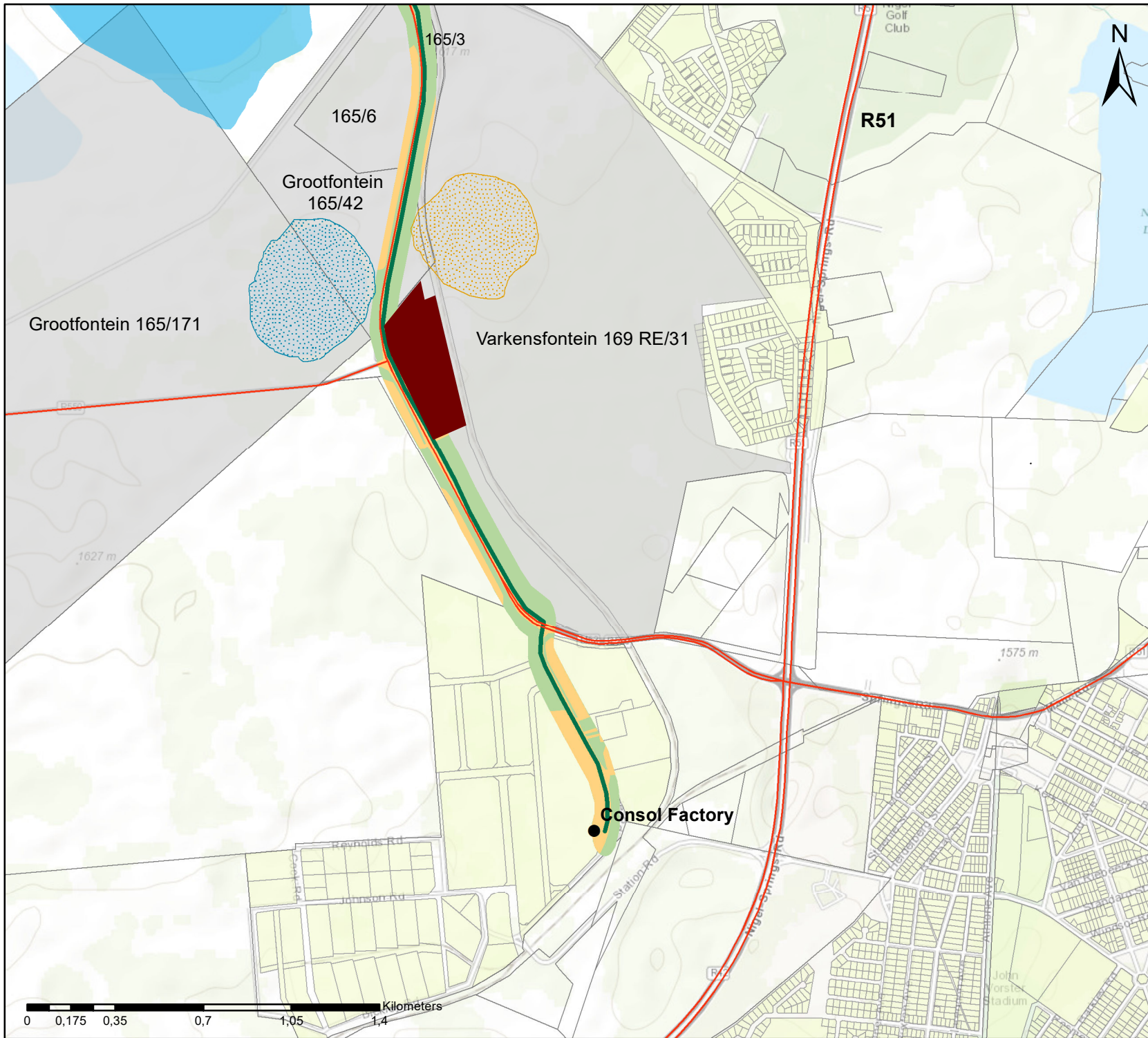
### Legend

- Main Road
- Pipeline Route C
- Affected Farm Portions
- Erf
- Farm Portion
- Environmental Sensitivities**
- Wetland (High Sensitivity)
- Wetland (Moderate Sensitivity)
- Wetland (Low Sensitivity)
- Wetland (Very Low Sensitivity)
- Catchment Basin
- Ecological Sensitivities**
- HIGH
- LOW
- NEGLIGIBLE

Scale:  
Projection: LQ29 WGS\_1984  
Map: Nigel Gas Pipeline\_Env sensitivities Map 05.05.19







# Gas Transmission Pipeline, Nigel, Gauteng Province

Environmental Sensitivity Map:  
Section 3

## Legend

- Consol Factory
  - Main Road
  - Pipeline Route C
  - Affected Farm Portions
  - Erf
  - Farm Portion
- Environmental Sensitivities**
- Heritage Site (Burial Site: NGP-BP01)
  - Wetland (Moderate Sensitivity)
  - Wetland (Low Sensitivity)
  - Catchment Basin
- Ecological Sensitivities**
- HIGH
  - LOW
  - NEGLIGIBLE



Scale:  
Projection: LQ29 WGS\_1984  
Map: Nigel Gas Pipeline\_Env Sensitivity Map 05.05.19

