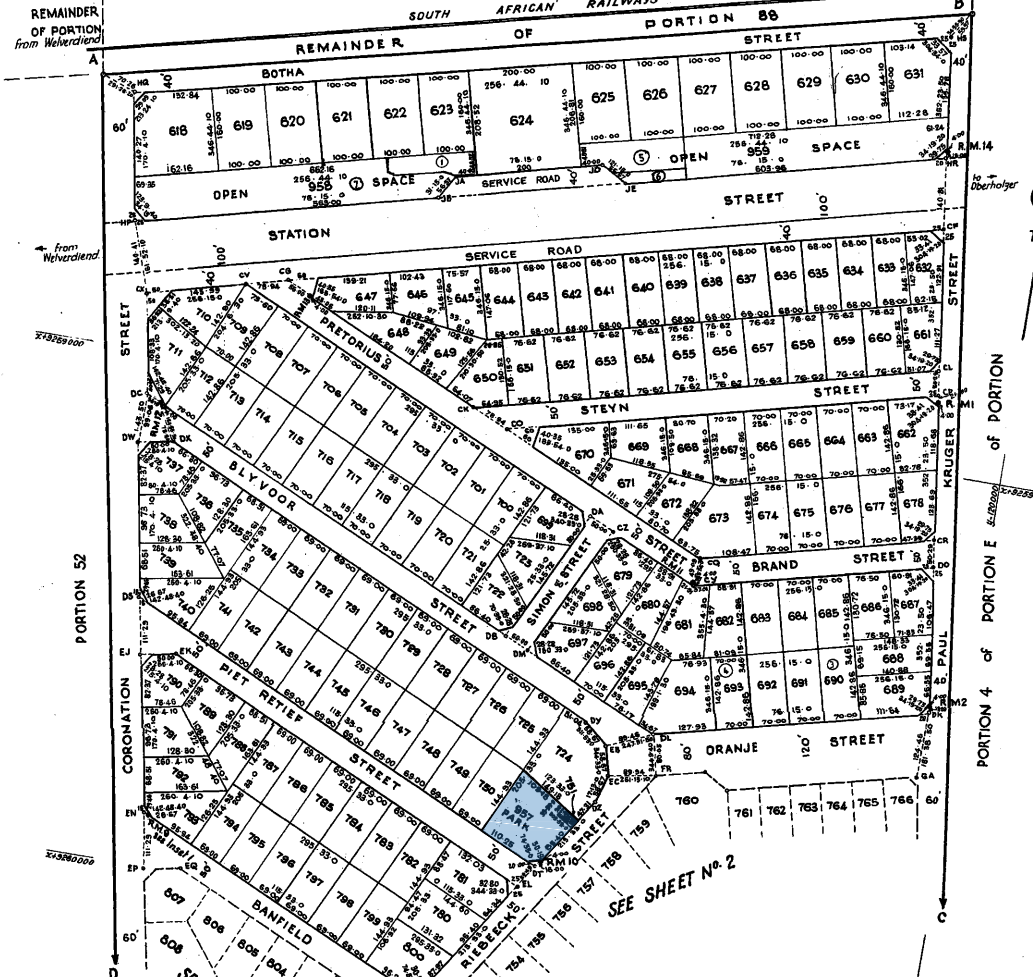


SHEET No 1



S.G. No A 1603/54

AREAS OF ERVEN

ERF No.	SQUARE FEET
618	25 000
619 - 623	16 000
624	41 533
625 - 630	16 000
631	19 923
632 - 640	10 000
641	19 923
642 - 668	10 000
669	10 000
671 - 672	10 000
673	17 287
674 - 677	10 000
678	10 000
679 - 680	10 000
681	12 516
682	10 000
683 - 686	10 000
687	11 500
688 - 693	10 000
694	17 110
695 - 706	10 000
707	10 000
708	10 000
709	10 000
710	10 000
711	10 000
712 - 723	10 000
724	21 166
725 - 739	10 000
740	10 000
741 - 750	10 000
751	8 000
752	10 000
753	10 000
754 - 759	10 000
760	10 000
761	10 000
762 - 764	10 000
765	10 000
766	10 000
767	10 000
768	10 000
769	10 000
770	10 000
771	10 000
772	10 000
773	10 000
774	10 000
775	10 000
776	10 000
777	10 000
778	10 000
779	10 000
780	10 000
781	10 000
782	10 000
783	10 000
784	10 000
785	10 000
786	10 000
787	10 000
788	10 000
789	10 000
790	10 000
791	10 000
792	10 000
793	10 000
794	10 000
795	10 000
796	10 000
797	10 000
798	10 000
799	10 000
800	10 000
801	10 000
802	10 000
803	10 000
804	10 000
805	10 000
806	10 000
807	10 000
808	10 000
809	10 000
810	10 000
811	10 000
812	10 000
813	10 000
814	10 000
815	10 000
816	10 000
817	10 000
818	10 000
819	10 000
820	10 000
821	10 000
822	10 000
823	10 000
824	10 000
825	10 000
826	10 000
827	10 000
828	10 000
829	10 000
830	10 000
831	10 000
832	10 000
833	10 000
834	10 000
835	10 000
836	10 000
837	10 000
838	10 000
839	10 000
840	10 000
841	10 000
842	10 000
843	10 000
844	10 000
845	10 000
846	10 000
847	10 000
848	10 000
849	10 000
850	10 000
851	10 000
852	10 000
853	10 000
854	10 000
855	10 000
856	10 000
857	10 000
858	10 000
859	10 000
860	10 000
861	10 000
862	10 000
863	10 000
864	10 000
865	10 000
866	10 000
867	10 000
868	10 000
869	10 000
870	10 000
871	10 000
872	10 000
873	10 000
874	10 000
875	10 000
876	10 000
877	10 000
878	10 000
879	10 000
880	10 000
881	10 000
882	10 000
883	10 000
884	10 000
885	10 000
886	10 000
887	10 000
888	10 000
889	10 000
890	10 000
891	10 000
892	10 000
893	10 000
894	10 000
895	10 000
896	10 000
897	10 000
898	10 000
899	10 000
900	10 000
901	10 000
902	10 000
903	10 000
904	10 000
905	10 000
906	10 000
907	10 000
908	10 000
909	10 000
910	10 000
911	10 000
912	10 000
913	10 000
914	10 000
915	10 000
916	10 000
917	10 000
918	10 000
919	10 000
920	10 000
921	10 000
922	10 000
923	10 000
924	10 000
925	10 000
926	10 000
927	10 000
928	10 000
929	10 000
930	10 000
931	10 000
932	10 000
933	10 000
934	10 000
935	10 000
936	10 000
937	10 000
938	10 000
939	10 000
940	10 000
941	10 000
942	10 000
943	10 000
944	10 000
945	10 000
946	10 000
947	10 000
948	10 000
949	10 000
950	10 000
951	10 000
952	10 000
953	10 000
954	10 000
955	10 000

MAIN FIGURE DATA

SIDES	ANGLES	SYSTEM	CO-ORDINATES
AB 1682.92	AB 125.44 10	A	+18157.70 +58476.96
BC 3350.12	BC 1352.23 50	B	+19785.78 +53090.60
CD 1869.95	CD 70.24 10	C	+20299.05 +61411.96
DA 3498.80	DA 170.4 10	D	+18761.20 +61923.35

COORDINATES OF BLOCK CORNERS & APEX POINTS

POINT	(x) Constants (X)	(y) Constants (Y)
CF	-198172.61	+58519.38
CG	-19777.01	+58825.28
CH	-19073.20	+59000.55
CI	-18484.34	+58790.11
CJ	-19044.42	+59044.60
CK	-18256.19	+58545.90
CL	-18451.41	+59238.16
CM	-18984.21	+59130.50
CN	-18200.14	+58840.30
CO	-18390.76	+58468.68
CP	-18445.95	+59291.97
CQ	-18277.04	+58211.22
CR	-18231.93	+59189.66
CS	-18008.70	+58427.44
CT	-18344.98	+59002.34
CU	-18336.88	+59460.49
CV	-18414.77	+58993.25
CW	-18165.81	+59469.00
CX	-18900.26	+58460.65
CY	-18394.76	+59462.64
CZ	-18234.91	+59384.46
DA	-18541.99	+59181.36
DB	-18410.34	+59469.39
DD	-18446.36	+59267.89
DE	-18377.55	+59097.81
DF	-18628.35	+58845.68
DG	-18791.66	+58563.85

REFERENCE MARKS

MARK	COORDINATES
RM1	-18658.30 +58866.78
RM2	-18936.76 +59449.63
RM3	-18470.68 +59389.60
RM4	-18249.75 +59671.18
RM5	-18446.36 +59267.89
RM6	-18377.55 +59097.81
RM7	-18628.35 +58845.68
RM8	-18791.66 +58563.85

GENERAL PLAN
(Comprising Sheets 1 & 2)
OF
THE TOWNSHIP OF
OBERHOLZER EXTENSION No. 1
comprising 338 Erven numbered 618-955, 4 Parks and Open Spaces numbered 956-959 and the Streets and Roads situate on Portion 92 (a portion of Portion 88) of the farm WONDERFOONTEIN No. 8 in extent 65 750 morgen vide diagram S.G. No. A 2242/54
DISTRICT OF OBERHOLZER
PROVINCE OF TRANSVAAL GAUTENG
SCALE 1:1500

The beacons of each Erf represented on this Plan are in accordance with regulation and have been placed under my supervision.

Surveyed in December, 1953 - February, 1954
by me
A.E. Wainwright
Land Surveyor

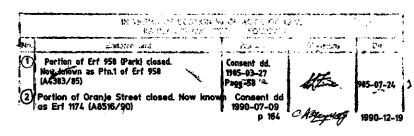
S.G. FILE No. 12850/1
SURVEY RECORDS 478/54
COMPILATION 1Q-3-B

Tracing 43/332
TP 1322 (S11)
TT

A R E A S

ERF NO.	SQUARE METRES	ERF NO.	SQUARE METRES	ERF NO.	SQUARE METRES	ERF NO.	SQUARE METRES
620	2478	725-739	991	816	1340	915-918	991
621-623	1296	740	991	817	1410	919	1130
624	4117	741-750	991	818	1103	920-921	991
625-630	1296	751	70	819-838	991	922	1065
631	1876	752-757	991	839	1044	923	1164
632-661	991	758	1211	840-842	991	924-928	991
662	1251	759	1092	843	1100	929	1164
663-669	991	760	2110	844-845	991	930	991
670	1233	761-766	714	846	1100	931-932	1115
671-672	991	767-771	991	847	1103	933	1231
673	1714	772	1202	848-853	991	934-936	1000
674-677	991	773	1302	854-855	1007	937-940	991
678	1044	774-779	991	856-859	991	941	1659
679-680	991	780-781	1202	860	1048	942	1162
681	1243	782-792	991	861	79	943	991
682-688	991	793	997	862	1048	944-946	1110
689	1146	794-799	991	863-878	991	947-948	991
690-693	991	800	1292	879	1046	949	1211
694	1496	801-802	1150	880	991	950	1211
695-708	991	803-809	991	881-886	991	951-955	991
709	1011	810	997	887	1445	956	1,219.90 Ht.
710	1038	811-812	991	888-913	991	957	1764
711	1201	813	1153	914	668	958	3753
712-723	991	814	1146	915	991	959	568
724	2098	815	1130	916	2,143.78		

Metric Areas added
Approved
for SURVEYOR-GENERAL
1.10.1971

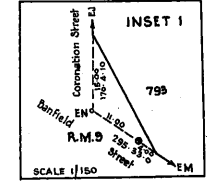
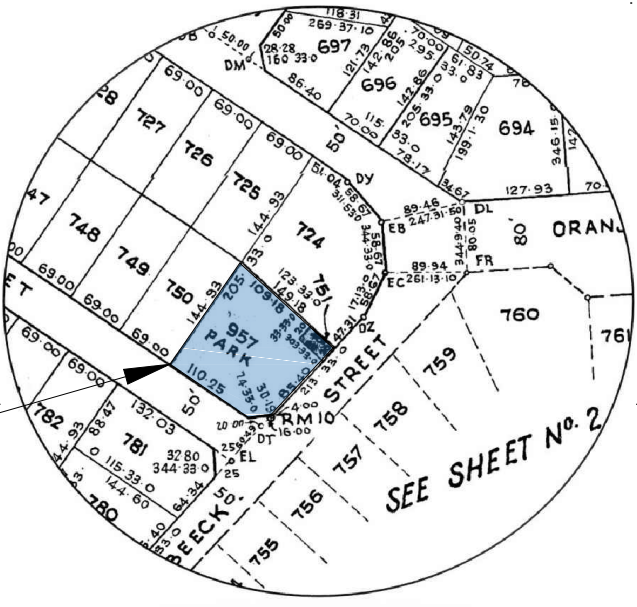


ENTERED IN SECTIONAL TITLE REGISTER IN ACCORDANCE WITH SECTION 12 OF ACT 98/1996

ERF	PLAN	FILE NO.	SG. D. NO.	SIGNATURE	DATE
957	110.05	617/2004	437/1999	[Signature]	2004/12/13
958	110.05	617/2004	437/1999	[Signature]	2006/06/02

IN TERMS OF SECTION 37 OF ACT 9 OF 1997 THIS PLAN IS AMENDED AS FOLLOWS

No.	Description	Authority	Signature	Date
1	Portion of Erf 957 (park) closed. Now known as Portion 1 of Erf 957 S.G. No. 4886/2009	Consent dd 2009.08.11 Pg 183 Vol. 1	[Signature]	2009.10.02
2	Portion of Erf 957 (park) closed. Now known as Portion 2 of Erf 957 S.G. No. 3534/2011	Consent dd 2011.10.19 Pg 194 Vol. 1	[Signature]	2012.01.18
3	Portion of Erf 958 (park) closed. Now known as Portion 2 of Erf 958 S.G. No. 3533/2011	Consent dd 2011.10.19 Pg 194 Vol. 1	[Signature]	2012.01.18



NOTE: All corners where displayed are set back at 20ft from the intersections of the street lines unless otherwise stated

Description of Beacons.
A D concrete beacon with centre pipe
B C 1/2" iron peg and cairn
RM1-RM14 1/2" iron peg in concrete, 6" below ground
All others are 1/2" iron pegs

Proposed property



Revision

Notes

Stamp Here:

COORDINATES:
S 26° 21' 04.3" E 27° 22' 31.6"
HASL: 1509m

DEVELOPLAN
PIETERSBURG
INCORPORATED
Reg. No. 99189921

P.O. Box 1883
Pietersburg, 0700
Tel: 015 - 291 4176 / 7
Fax: 086 318 3307

Town planners & Environmental consultants
tecoplan@web.co.za

VODACOM Site Name:
PIET RETIEF STR

PROPERTY DESCRIPTION:
ERF 957
OBERHOLZER EXTENSION 1
MERAFONG LOCAL MUNICIPALITY
NORTH WEST

SG DIAGRAM

Drawn By: TEK

Checked By: _____

Date Drawn: 2017/03

SCR Job No: _____

2/7 Scale: NTS BS: 69490