

## **Appendix A**

### **Plans/Maps**

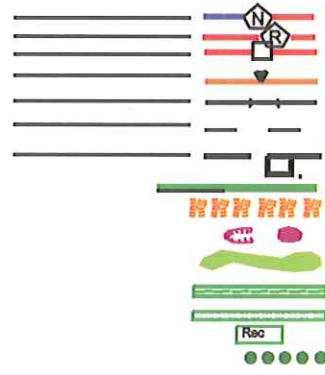
- 1:50 000 Topographical Regional Locality map
- Locality map (Google *earth*<sup>TM</sup> image) – town, main roads
- Surrounding land use map (Google *earth*<sup>TM</sup>)
- Site image (Google *earth*<sup>TM</sup>) – surroundings, current structures, access etc
- Filling stations on the R24 (P16-1) – existing, approved, new



# LEGEND

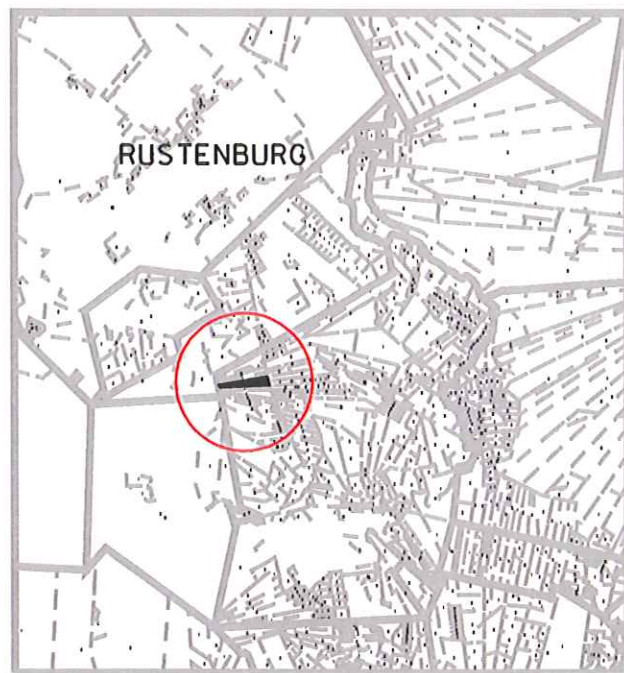
## REFERENCE

- National Freeway : National Route
- Arterial Route
- Main Road
- Secondary Road; Bench Mark
- Other Road; Bridge
- Track and Hiking Trail
- Railway; Station or Siding
- Protected Area
- Prominent Rock Outcrop
- Erosion; Sand
- Woodland
- Cultivated Land
- Orchard or Vinyard
- Recreational Ground
- Row of Trees

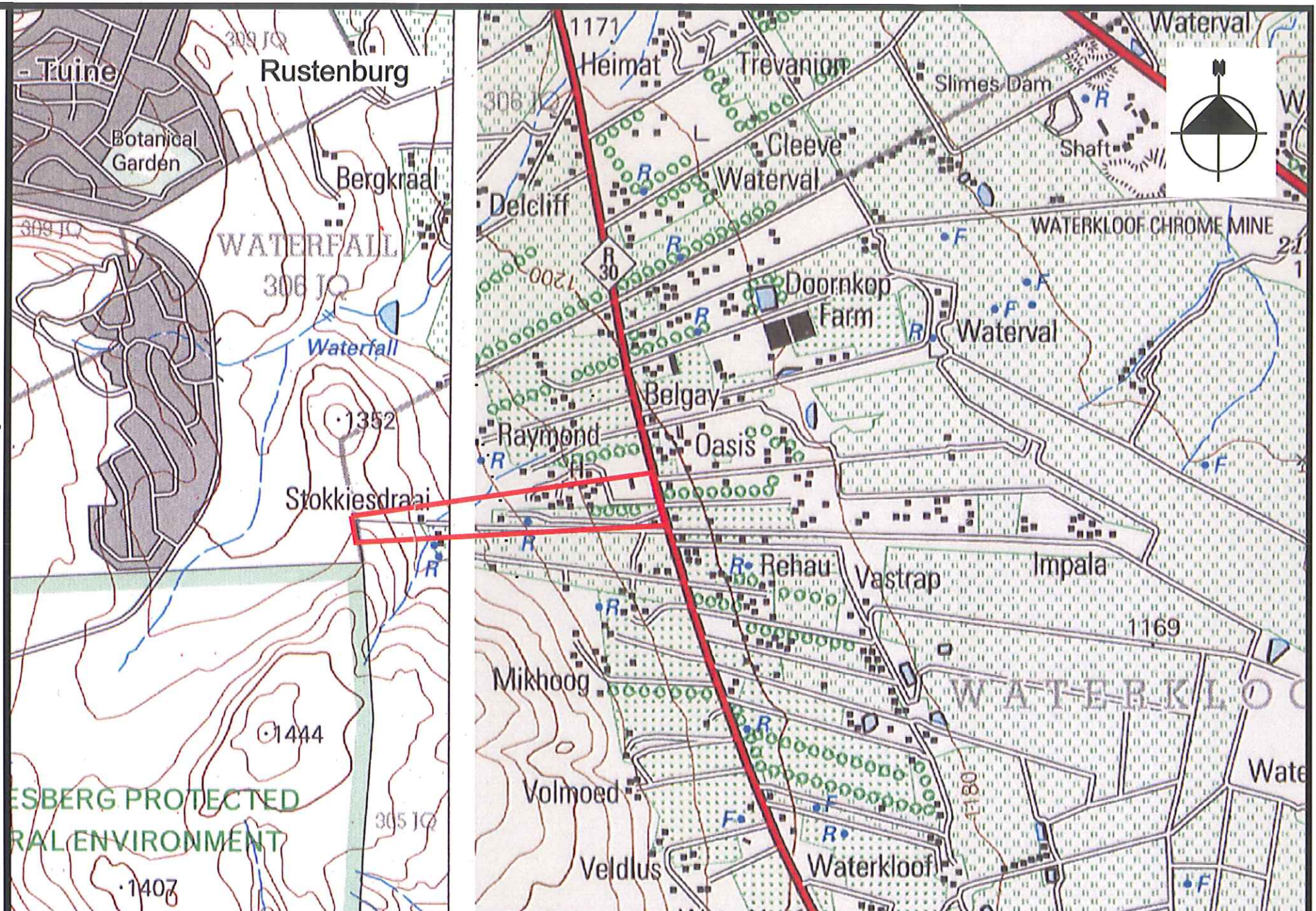


# LOCALITY

385/305-JQ

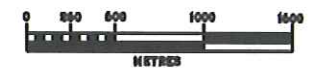


District Rustenburg



Portion 385 of the farm Waterkloof 305 JQ

WGS 84 LO 29



SCALE 1: 50 000





## LOCALITY MAP

### Cynhiana Township Establishment

1km

## LEGEND

- Town
- Main Roads

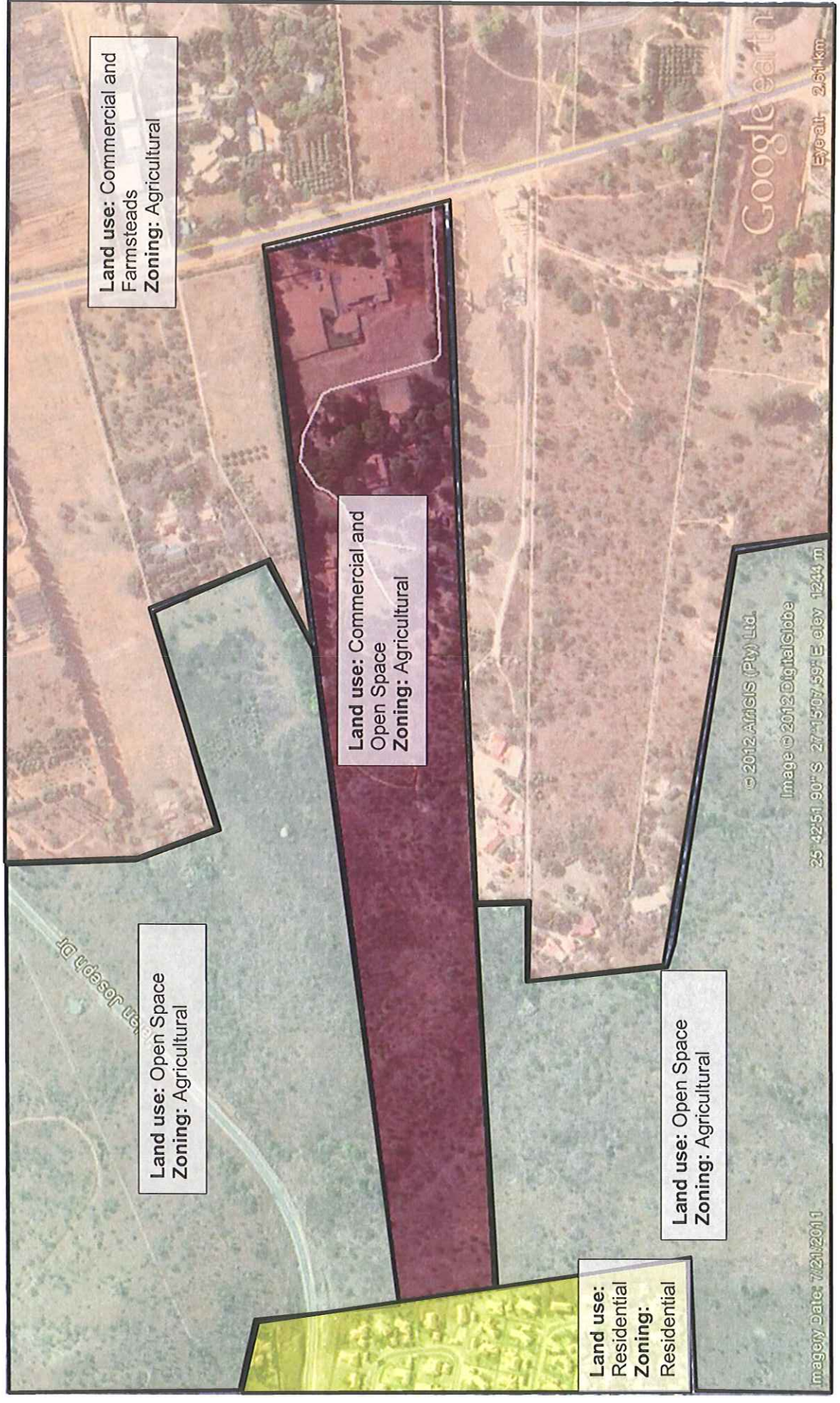
## LOCALITY



July 2012

25°42.866' S 17°15.058' E





Land use: Commercial and Farmsteads  
Zoning: Agricultural

Land use: Commercial and Open Space  
Zoning: Agricultural

Land use: Open Space  
Zoning: Agricultural

Land use: Residential  
Zoning: Residential

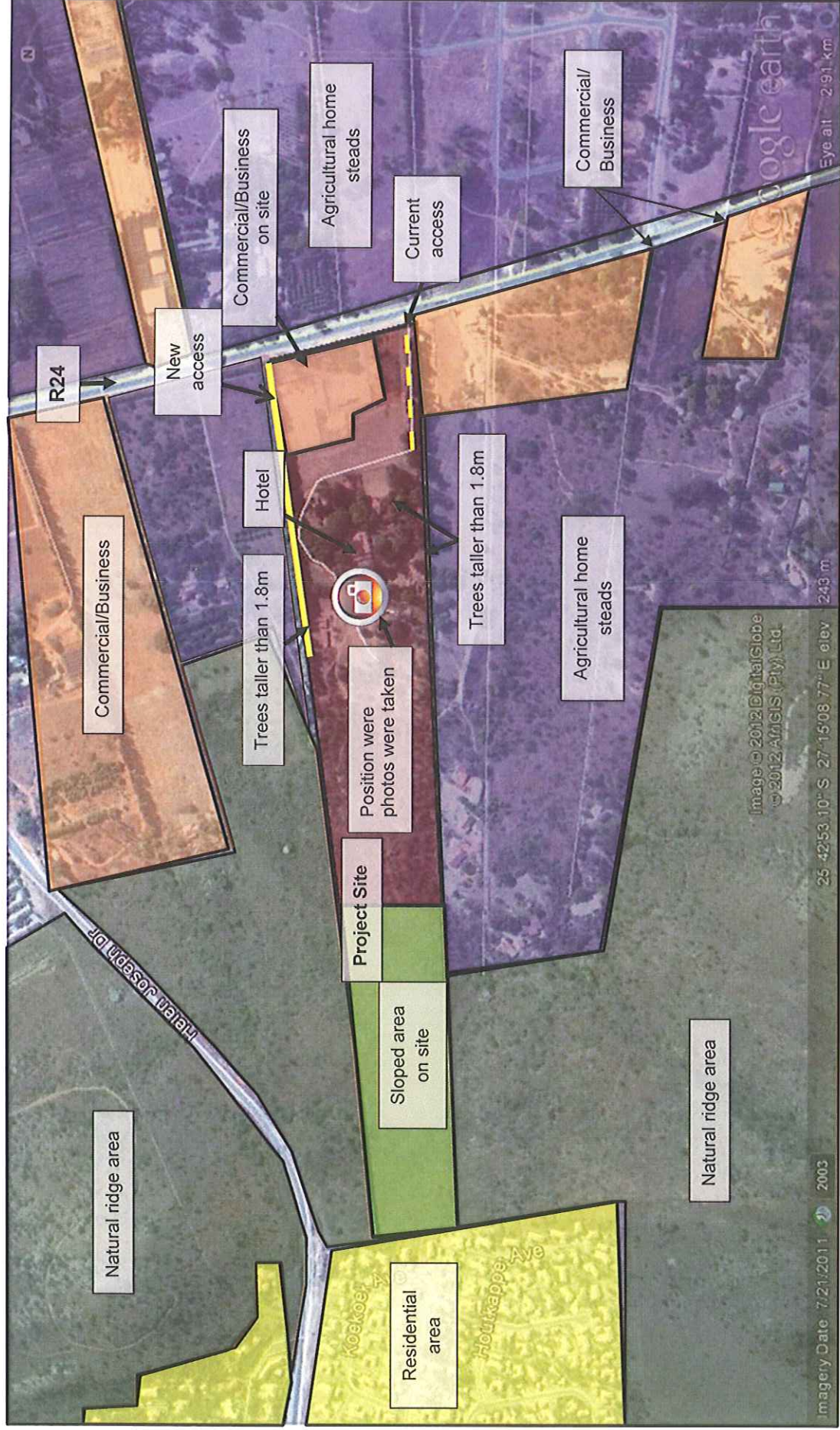
Land use: Open Space  
Zoning: Agricultural

© 2012 Aincis (Pty) Ltd.  
Image © 2012 DigitalGlobe  
25 42 51.90° S 27 15 07.59° E elev 1244 m

Google earth  
Eyealt: 2.61km

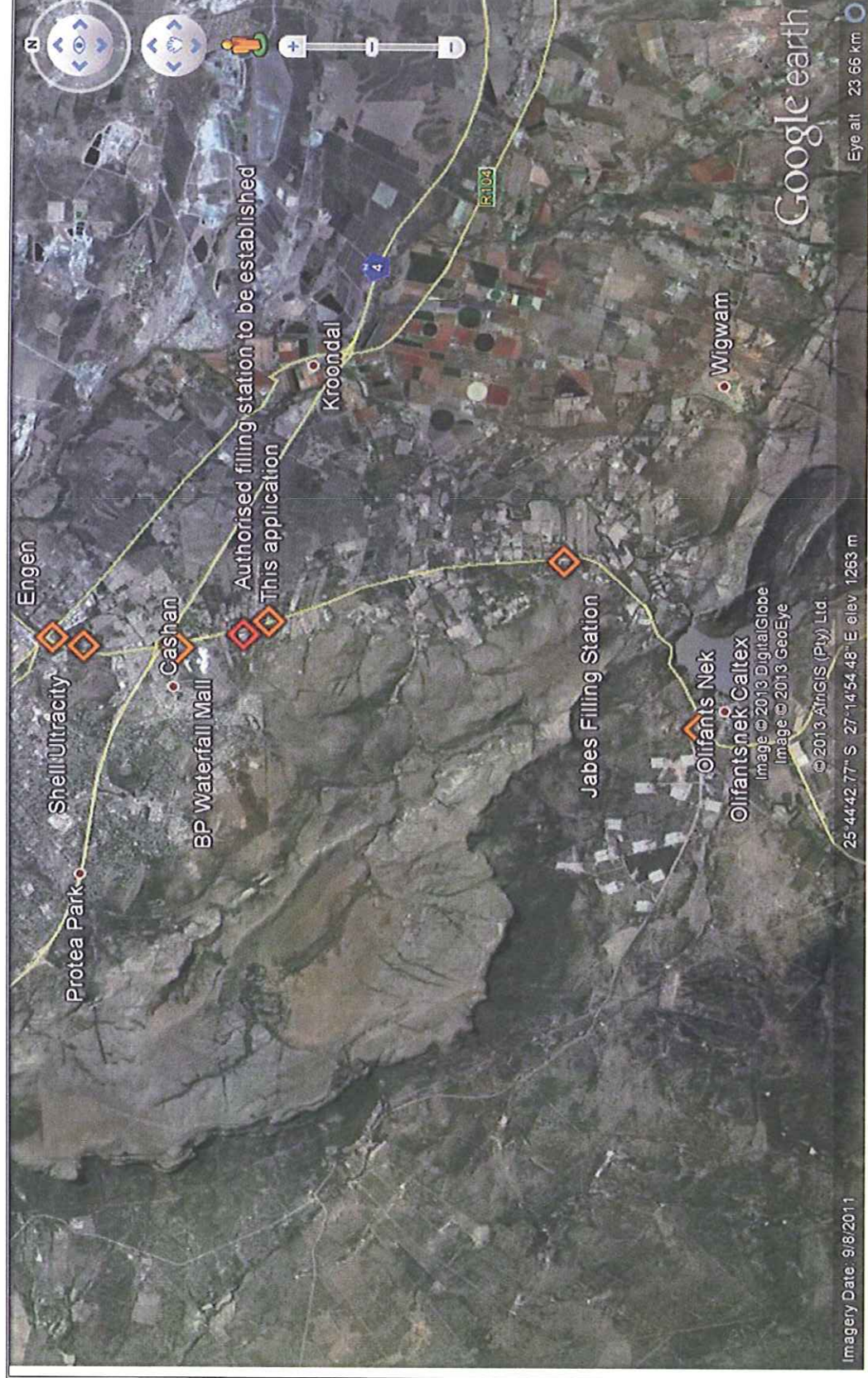
Imagery Date: 7/21/2011





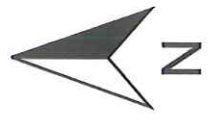
Site and surroundings





- LEGEND**
- Town
  - Main Roads
  - ◊ This application filling station
  - ◊ Other filling stations

**LOCALITY**



January 2013



**LOCALITY MAP**

**Proposed filling station and other filling stations on the R24**

