

## APPENDIX A: LOCATION OF GESTOPTEFONTEIN HILL



Figure 1. Location of the Gestoptefontein–Driekuil complex of sites in North-West Province, South Africa.

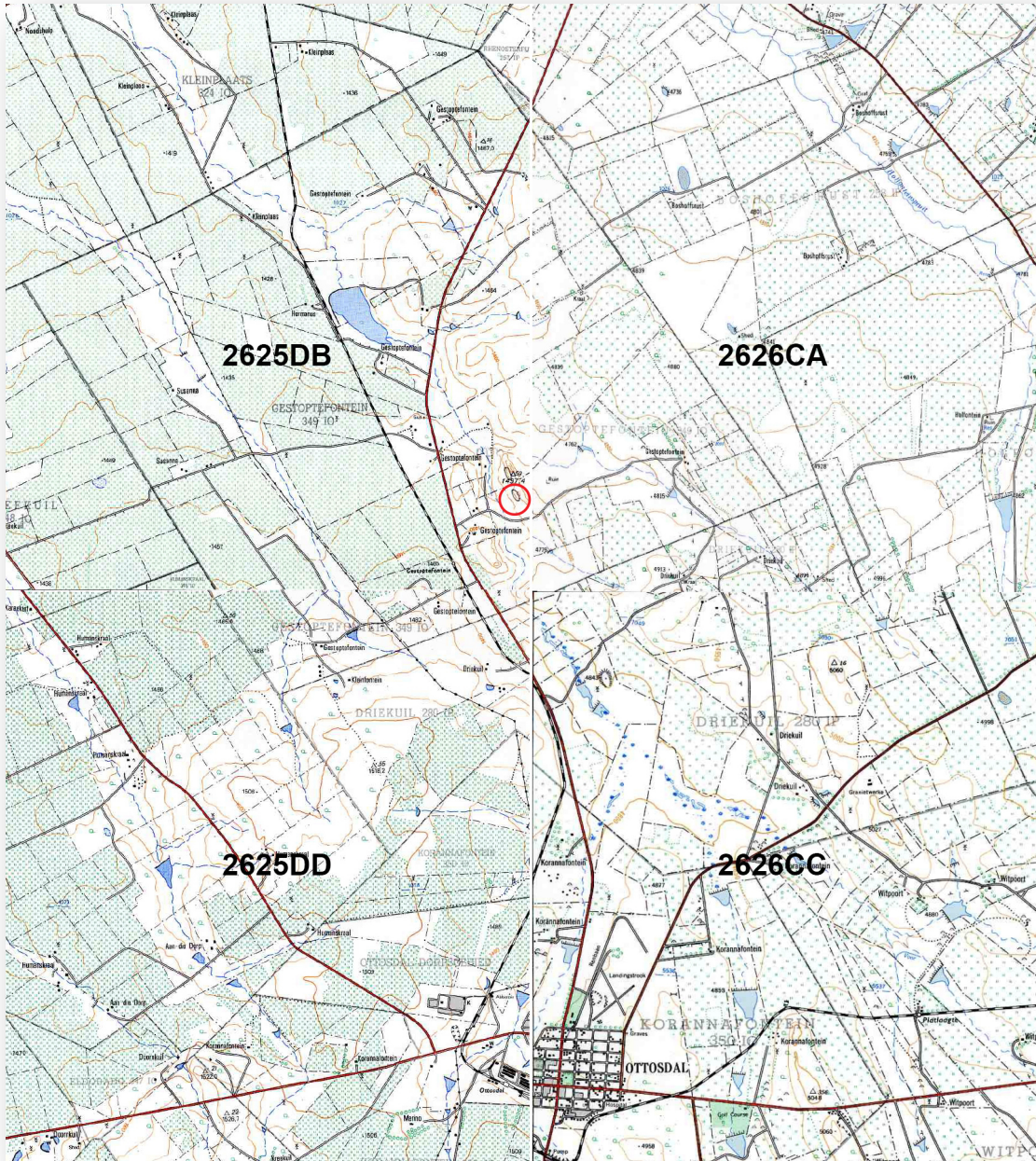


Figure 2. Location of Gestoptefontein Hill (circled in red) on composite of four 1:50 000 maps. Gestoptefontein Hill is on map sheet 2625DB.

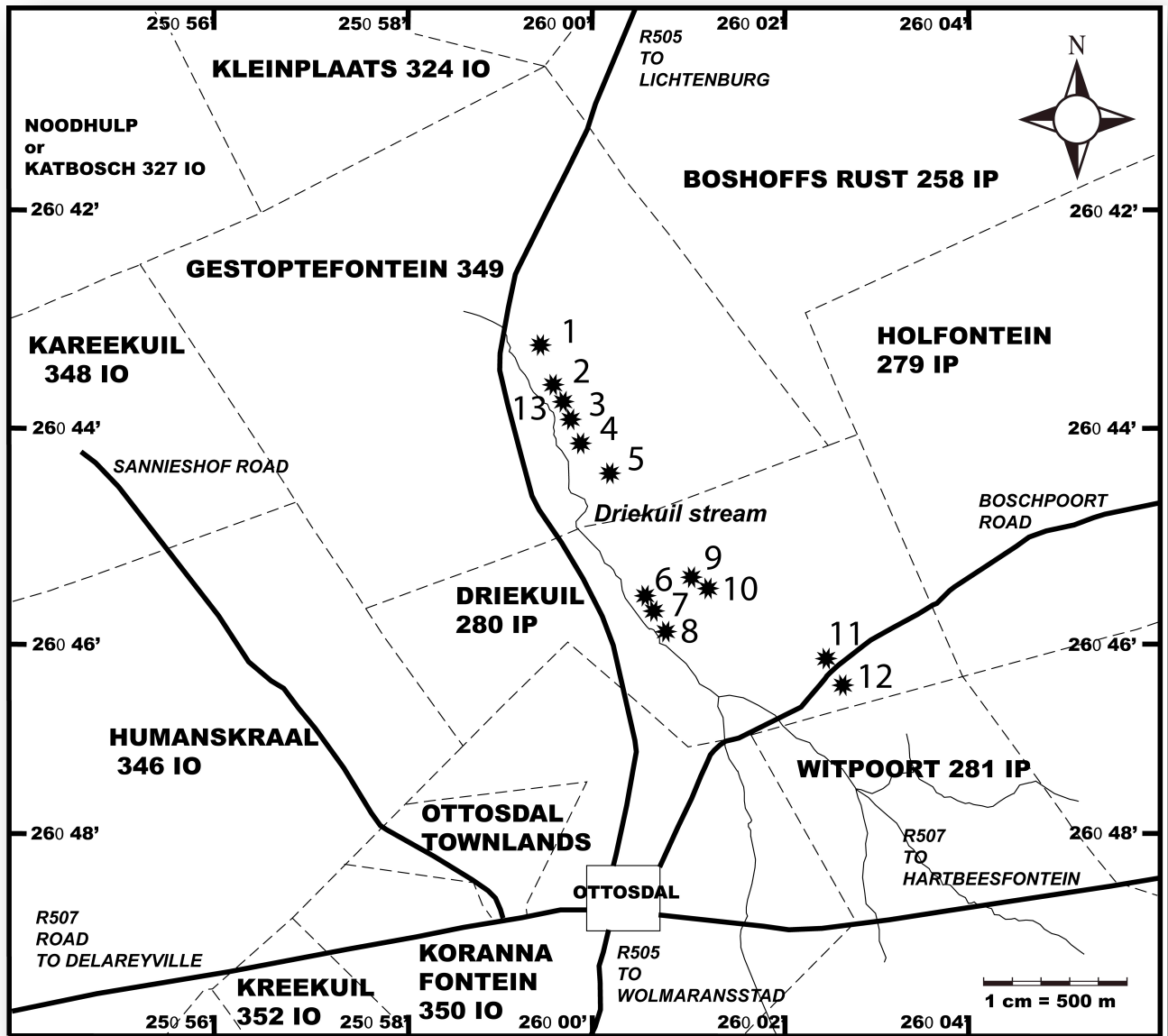


Figure 3. Locations of wonderstone outcrops with rock art on them. 1=Vorster's Farm; 2=Married Quarters Hill; 3=site 13; 4=Gestoptefontein Mountain; 5=Gestoptefontein Hill; 6=The Mound; 7=Driekuil Hill; 8=Skeleton Hill; 9=Driekuil Ridge (North); 10=Driekuil Ridge (south); 11=Boschpoort Road North; 12=Boschpoort Road South.

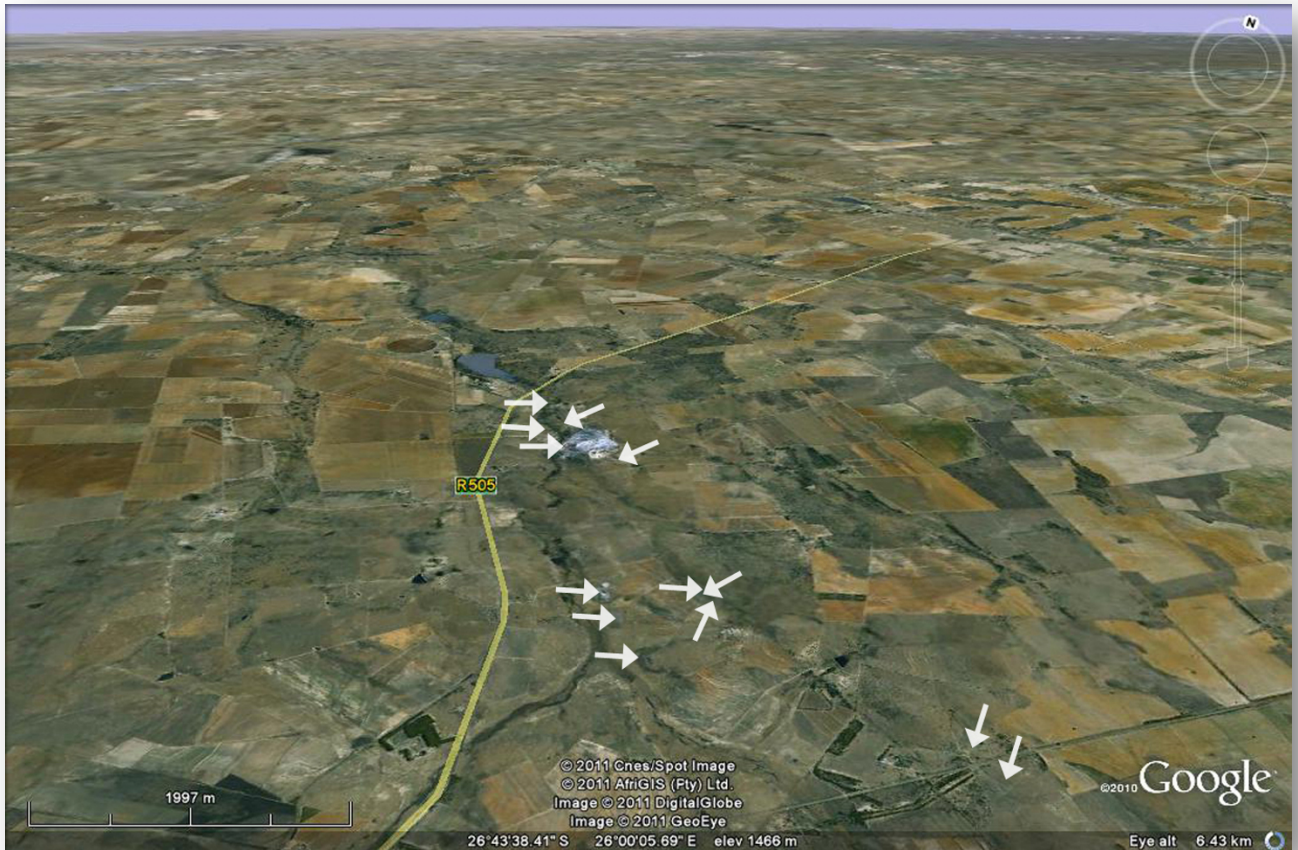


Figure 4. GOOGLE EARTH IMAGE OF THE GESTOPTEFONTEIN-DRIEKUIL COMPLEX (GDC). EACH WONDERSTONE OUTCROP WITH ROCK ART IS MARKED WITH A WHITE ARROW.



Figure 5. From a point to the southeast one can discern several of the outcrops that comprise the Gestoptefontein-Driekuil Complex (GDC). the arrow at extreme right points towards the Boschpoort Road outcrops. in this photograph the outcrops may look insubstantial but a person standing in this location can pick them out quite easily because their rocky surfaces are dark and sparsely vegetated in comparison with the surrounding landscape. Gestoptefontein Hill is identified by the 3<sup>rd</sup> arrow from the left and is the most prominent of the remaining outcrops.

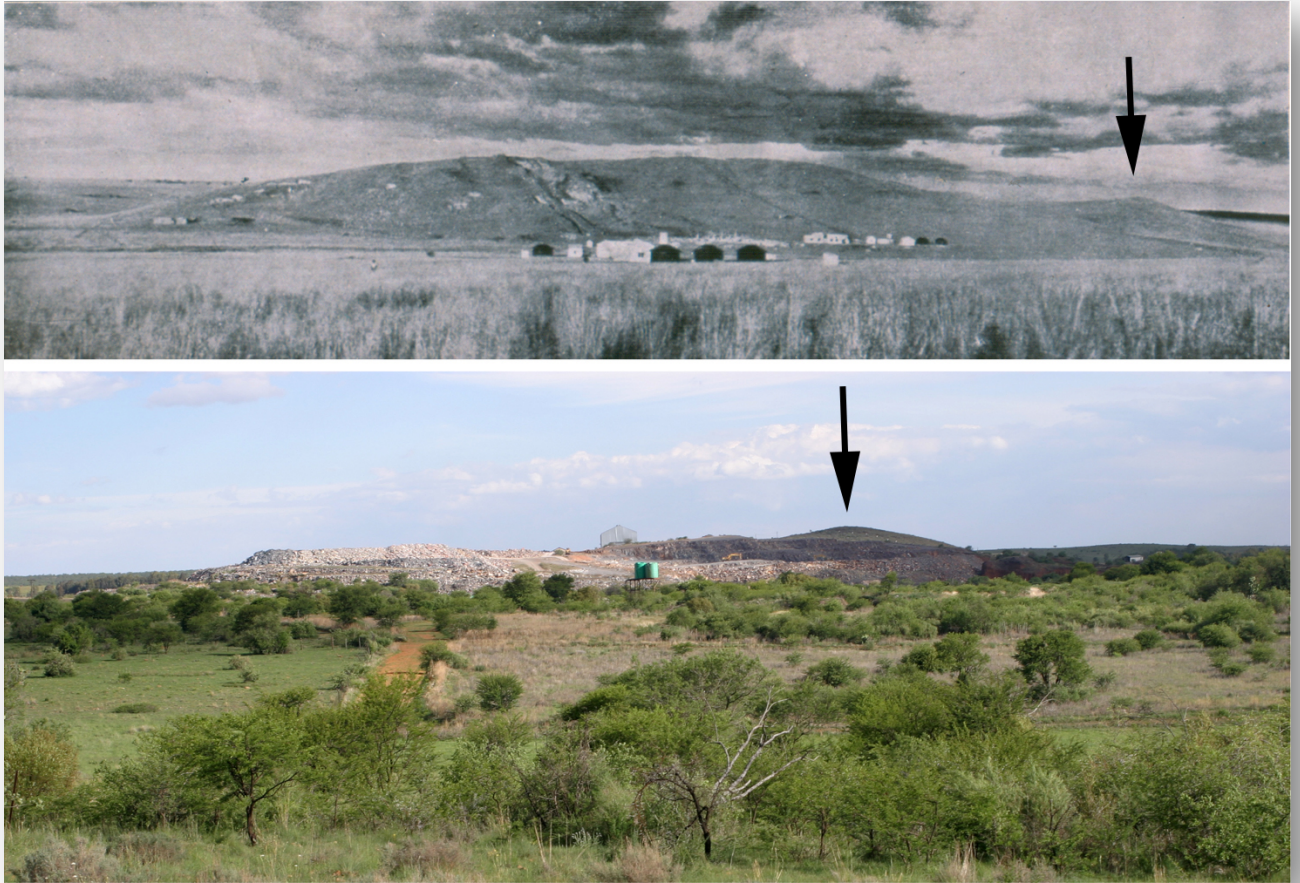


Figure 6. The top photograph of Gestoptefontein Mountain and Gestoptefontein Hill (arrowed) was taken before 1937 (Nel et al. 1937: Plate 1). The explorer Holub called these two adjacent outcrops of wonderstone the *doppelhügel*. The bottom photograph, taken in 2009, shows that most of Gestoptefontein Mountain has been destroyed. Gestoptefontein Hill now seems comparatively high.



Figure 7. Satellite view of Gestoptefontein Mountain (now almost completely quarried) and Gestoptefontein Hill (red circle) on Portion 44 of Gestoptefontein 349 IO. The two x's mark smaller areas of engravings.



Figure 8. The extent of rock markings on Gestoptefontein Hill is indicated by the green polygon. Image courtesy Wonderstone Limited, 2009 Michelle Moreland.



Figure 9. View of Gestoptefontein Hill at top right. an enclosure of white barrels rings the site.



Figure 10. View of Gestoptefontein Mountain at left showing open cast mining, and Gestoptefontein Hill at right.





Figure 11. View of Gestoptefontein Hill from the north, looking southwards. The entire hillside is covered with rock art.



Figure 12. Looking eastwards from the rock art site on top of Gestoptefontein Hill: the main plant (left) and offices (right).



Figure 13. Looking north east from the rock art site on top of Gestoptefontein Hill: bench mining on the remains of Gestoptefontein Mountain (left) and the main plant (right).



Figure 14. Looking westwards from the rock art site on top of Gestoptefontein Hill: the powder plant.



Figure 15. Barrels at the bottom of the western slope of Gestoptefontein Hill have been placed inadvertently amongst the rock art. The barrels pose a threat to the rock art in the immediate vicinity and should be removed.