

PROPOSED CONSTRUCTION OF A PACKING SHED ON REMAINDER OF PERSEEL 1731, KAKAMAS SOUTH SETTLEMENT, NORTHERN CAPE



SITE CO-ORDINATES

28°46'36.24\"S,
20°30'41.41\"E

● THE SITE



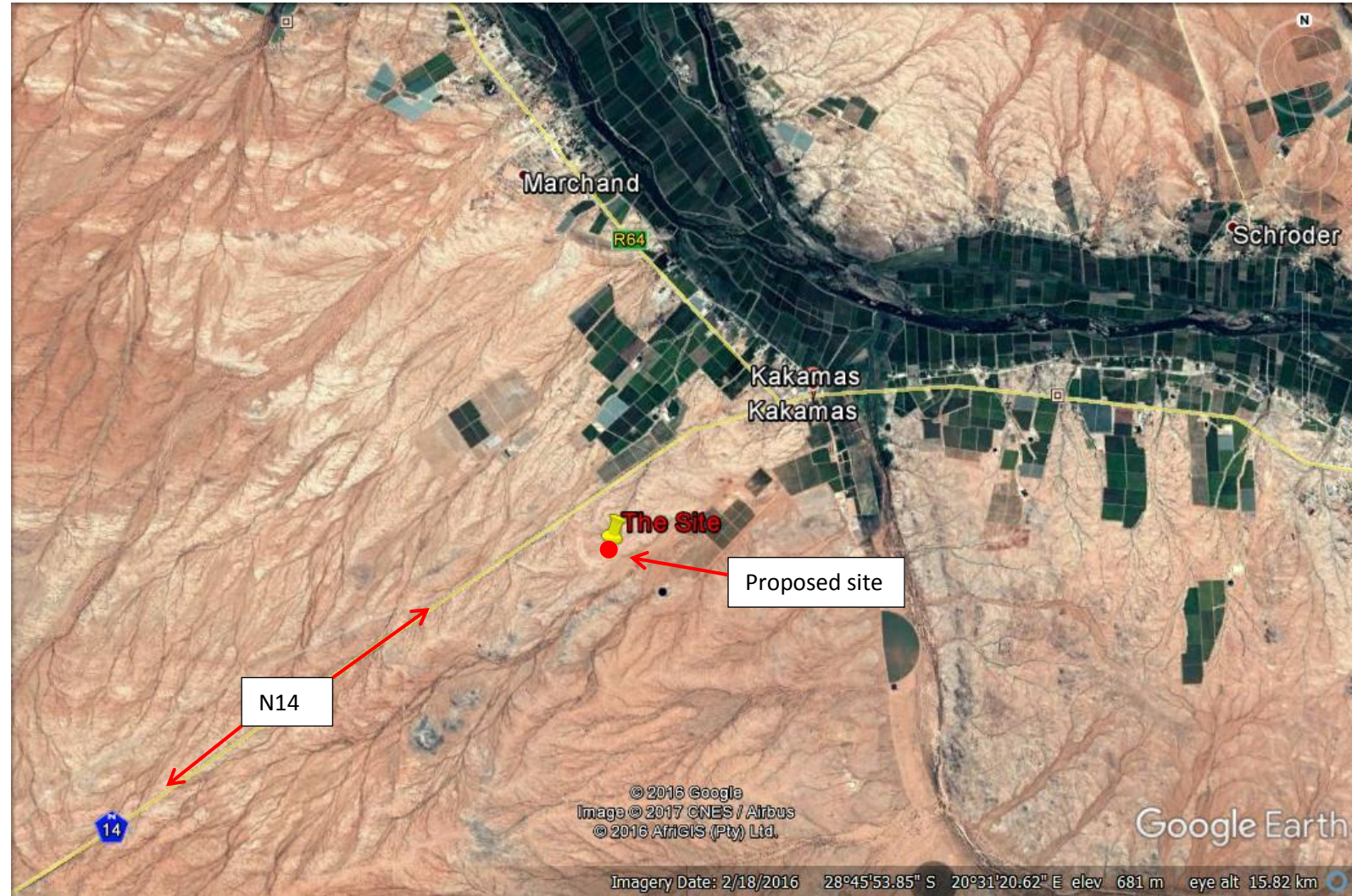
ENVIRO AFRICA REF:

0448

MAY 2017



PROPOSED CONSTRUCTION OF A PACKING SHED ON REMAINDER OF PERSEEL 1731, KAKAMAS SOUTH SETTLEMENT, NORTHERN CAPE



SITE CO-ORDINATES

28°46'36.24\"S,
20°30'41.41\"E

● THE SITE



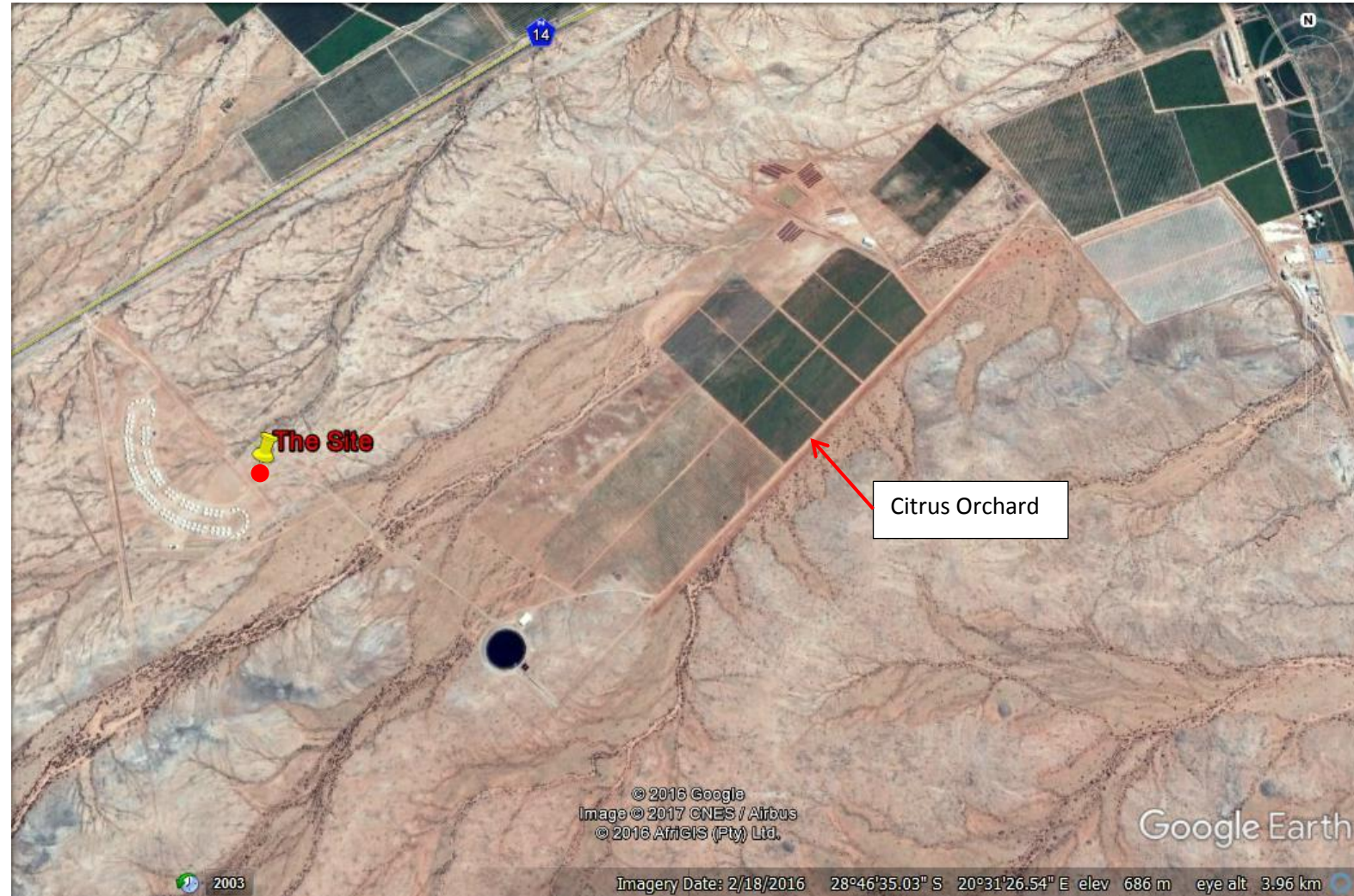
ENVIRO AFRICA REF:

0448

MAY 2017



PROPOSED CONSTRUCTION OF A PACKING SHED ON REMAINDER OF PERSEEL 1731, KAKAMAS SOUTH SETTLEMENT, NORTHERN CAPE



SITE CO-ORDINATES

28°46'36.24"S,
20°30'41.41"E

● THE SITE



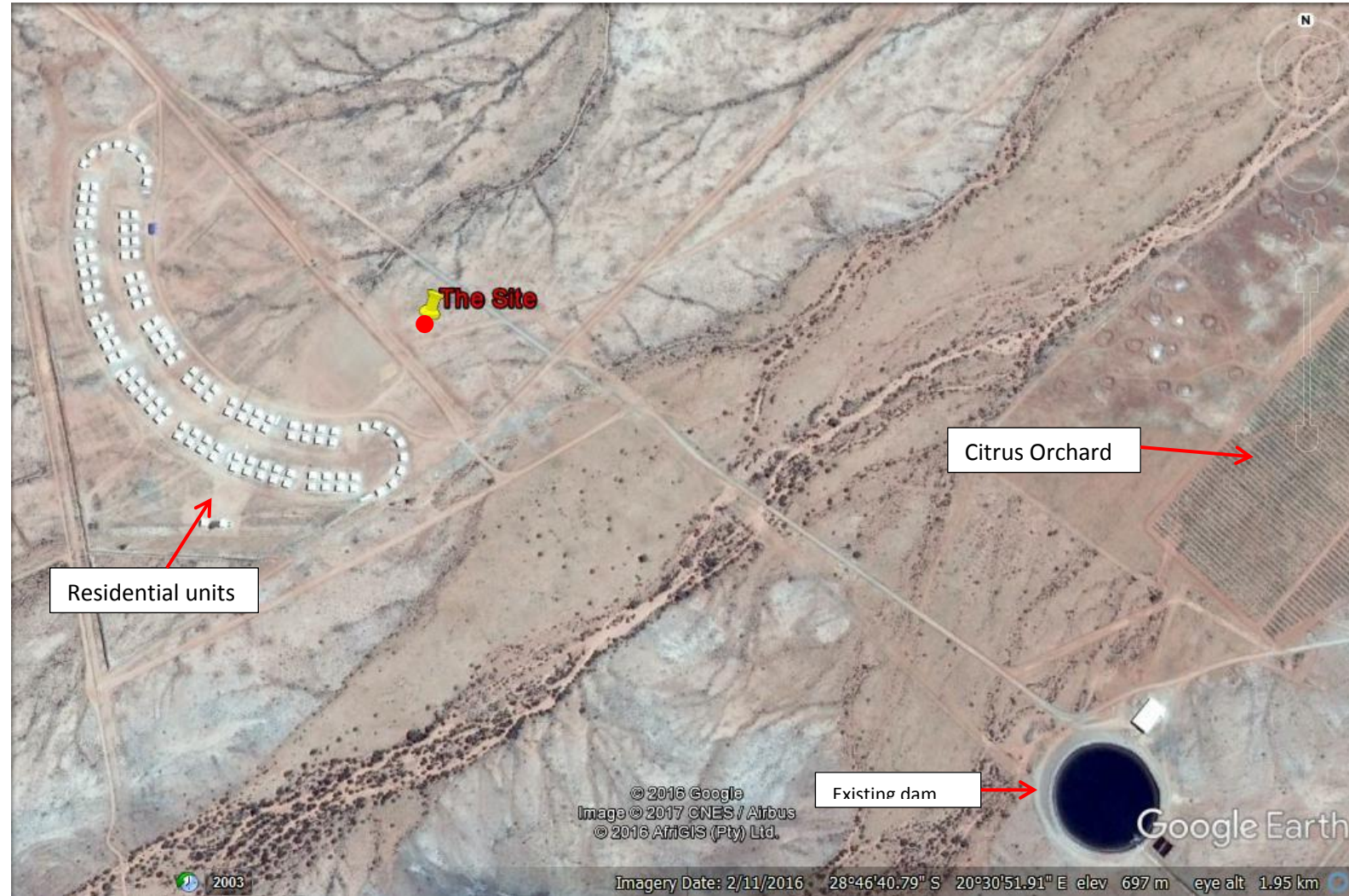
ENVIRO AFRICA REF:

0448

MAY 2017



PROPOSED CONSTRUCTION OF A PACKING SHED ON REMAINDER OF PERSEEL 1731, KAKAMAS SOUTH SETTLEMENT, NORTHERN CAPE



SITE CO-ORDINATES

28°46'36.24"S,
20°30'41.41"E

● THE SITE



ENVIRO AFRICA REF:

0448

MAY 2017



PROPOSED CONSTRUCTION OF A PACKING SHED ON REMAINDER OF PERSEEL 1731, KAKAMAS SOUTH SETTLEMENT, NORTHERN CAPE

SITE CO-ORDINATES

28°46'36.24"S,
20°30'41.41"E

● THE SITE



ENVIRO AFRICA REF:

0448

MAY 2017

