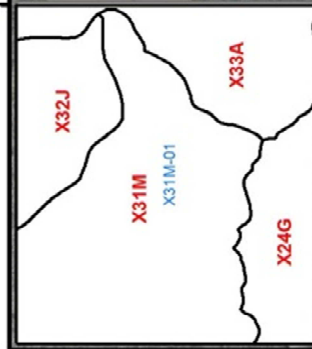




25°10'S



31°33'E

31°33'E

25°10'S

-  Quaternary Boundary
-  Wetlands

N

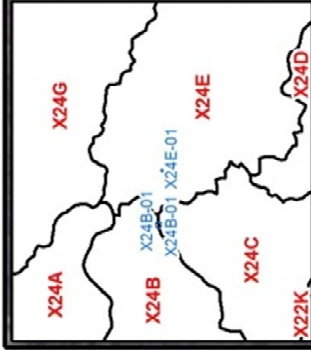


Co ordinate system : Geographic
 Datum : WGS84



Mpumalanga - Kruger National Park - X31M-01 - Nwatsishaka Road - m01

1:10,000

31°23'0"E



31°23'0"E

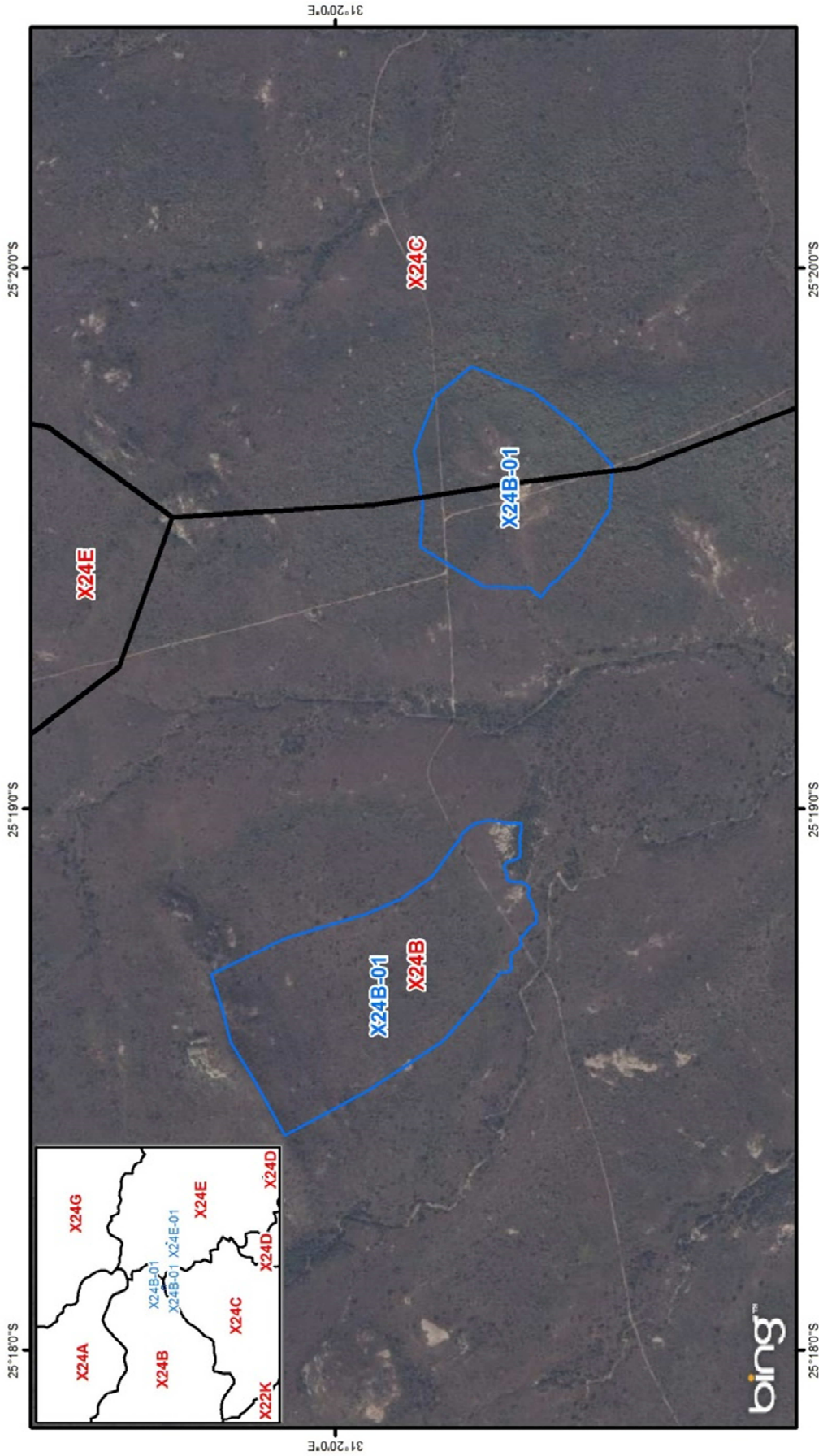
-  Quaternary Boundary
-  Wetlands





Co ordinate system : Geographic
Datum : WGS84

Mpumalanga - Kruger National Park - X24E-01 - Wetland - m01

1:5,000



-  Quaternary Boundary
-  Wetlands

Co ordinate system : Geographic
Datum : WGS84

Mpumalanga - Kruger National Park - X24B-01 - Site 13 - Seep catchment - m01

1:25,000