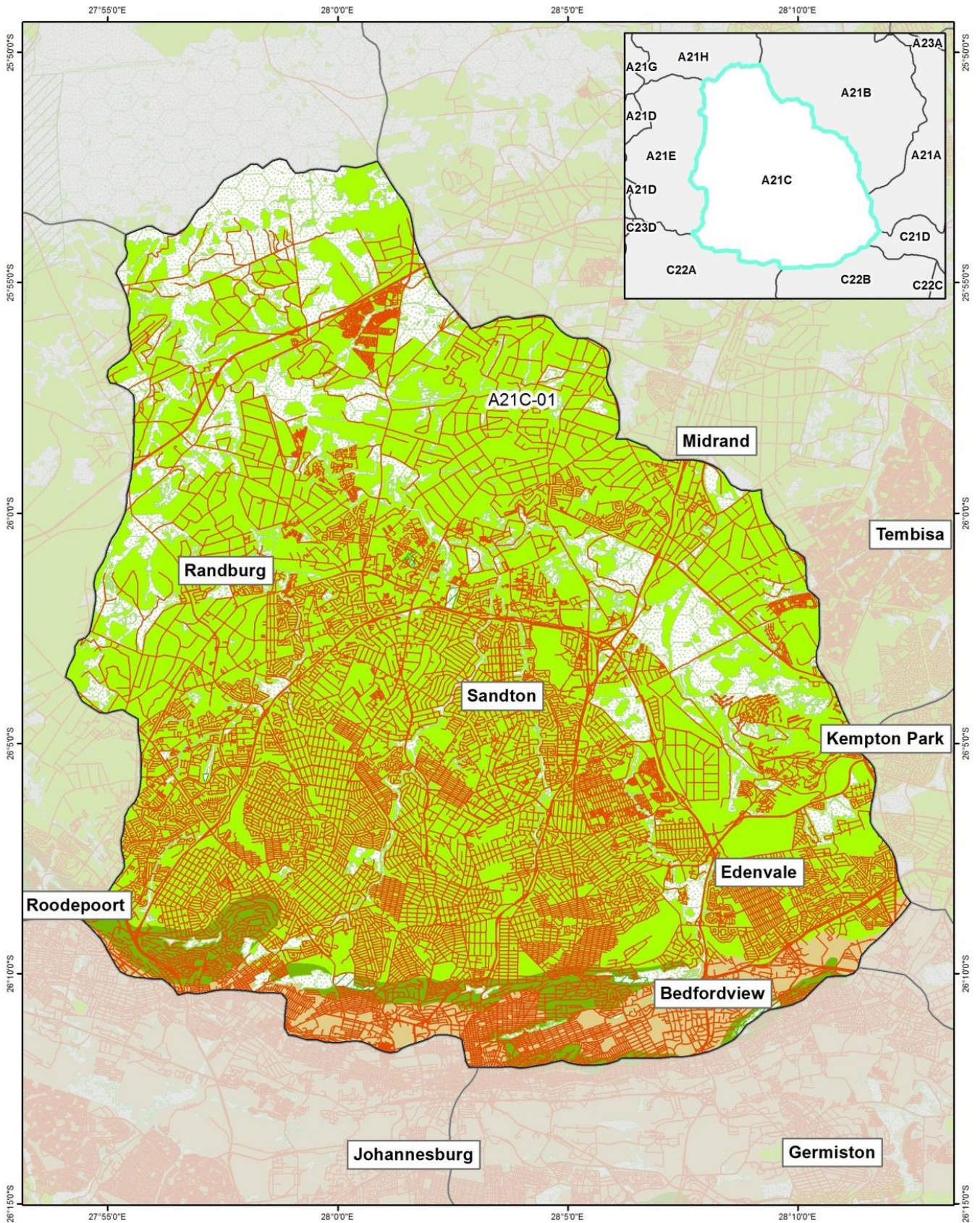


Appendix A

LOCALITY MAPS



Legend

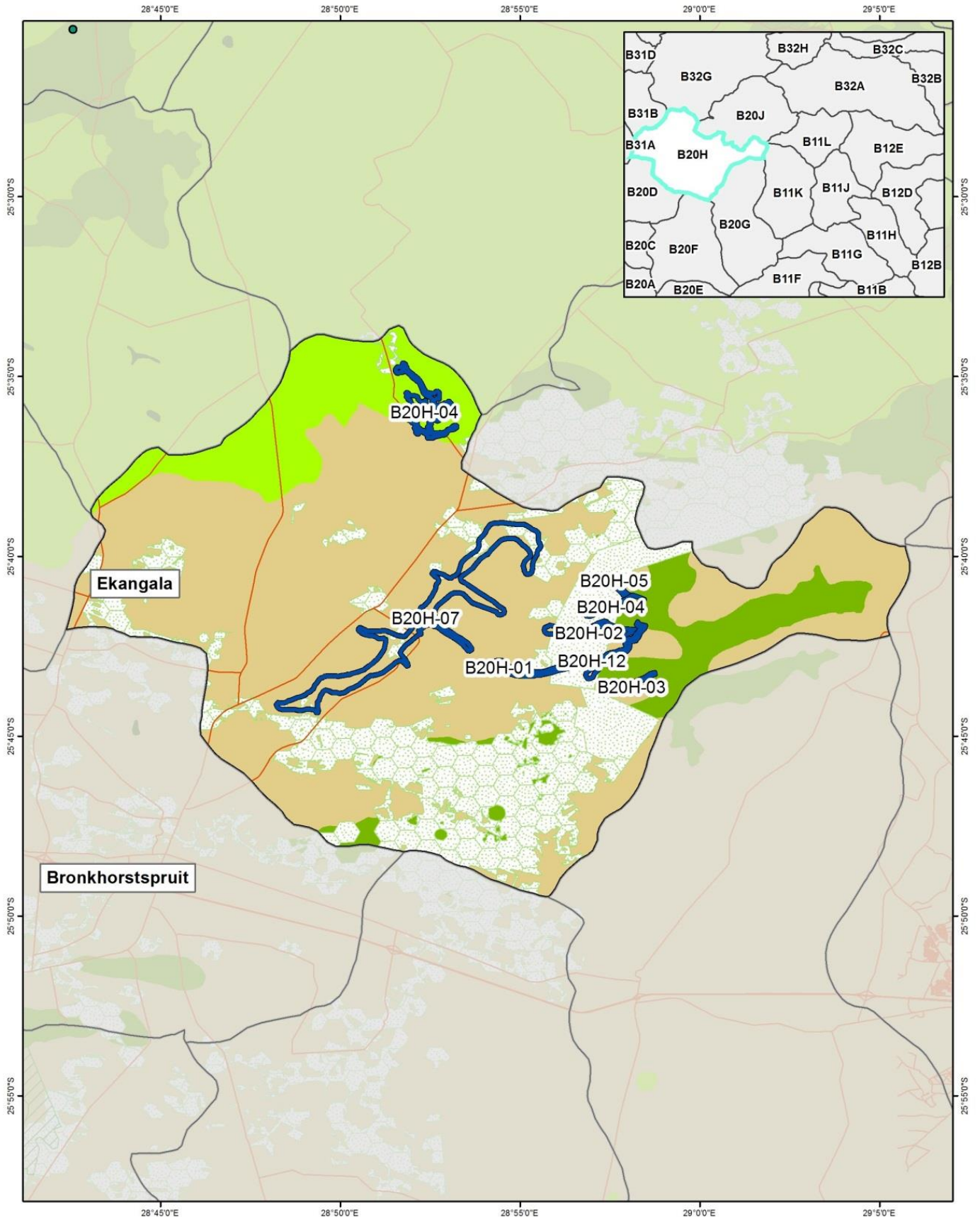
- | | | | |
|---------------------|-------------------|-----------------------------------|---------------------------------|
| Wetland | Protected areas | Ecosystem protection level | Ecosystems threat status |
| Quaternary boundary | CBA (terrestrial) | Well protected | Vulnerable |
| Roads | CBA (aquatic) | Moderately protected | Endangered |
| | | Poorly protected | Critically endangered |



Coordinate system : Geographic
Datum : WGS84

Gauteng - Gauteng North - A21C

1:198,170



Legend

- | | | | |
|---------------------|-------------------|-----------------------------------|---------------------------------|
| Wetland | Protected areas | Ecosystem protection level | Ecosystems threat status |
| Quaternary boundary | CBA (terrestrial) | Well protected | Vulnerable |
| Roads | CBA (aquatic) | Moderately protected | Endangered |
| | | Poorly protected | Critically endangered |

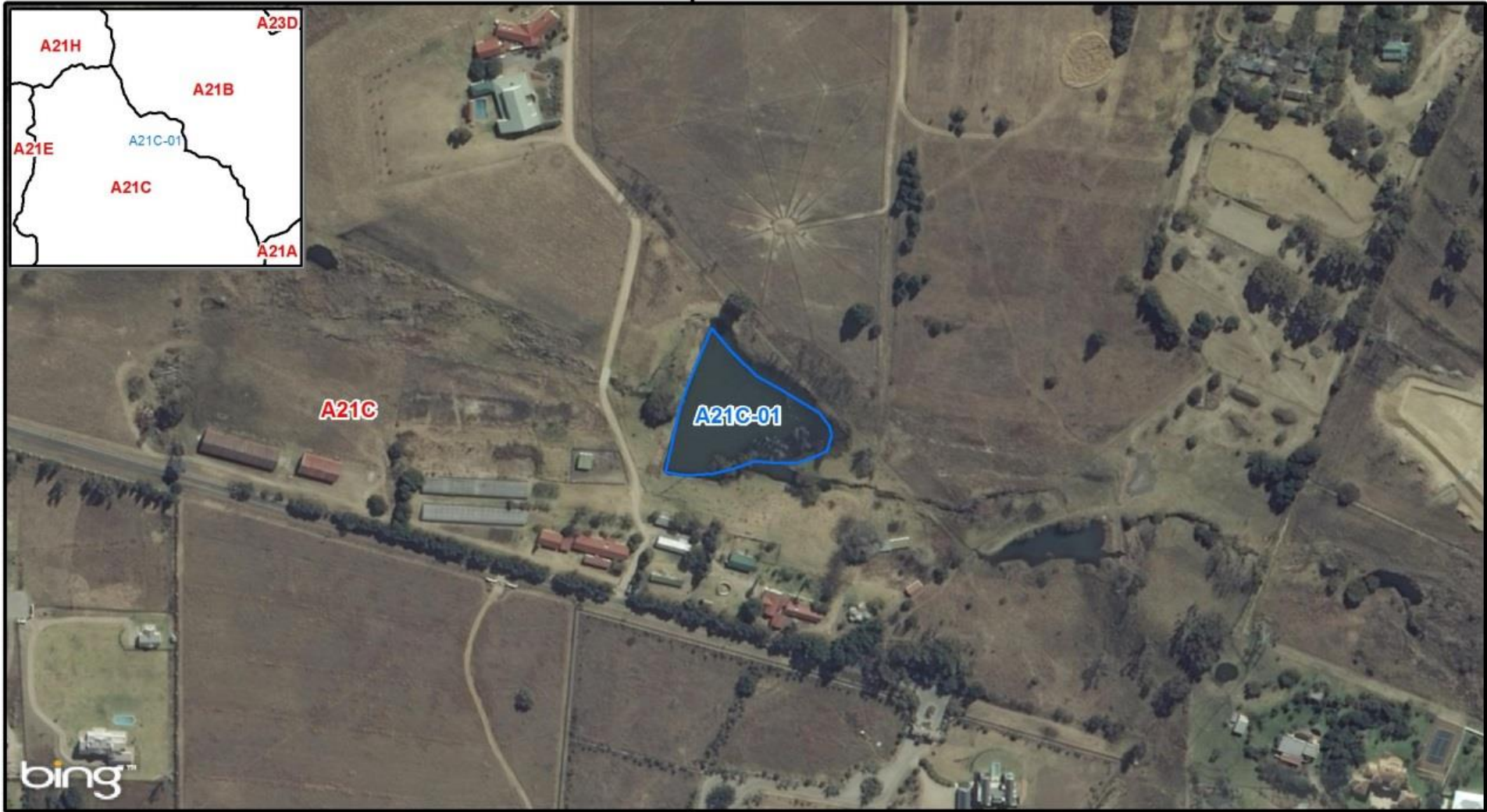


Coordinate system : Geographic
Datum : WGS84

Gauteng - Gauteng North - B20H

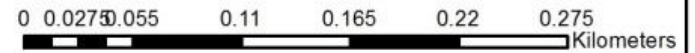
1:253,210

28°4'0"E



28°4'0"E

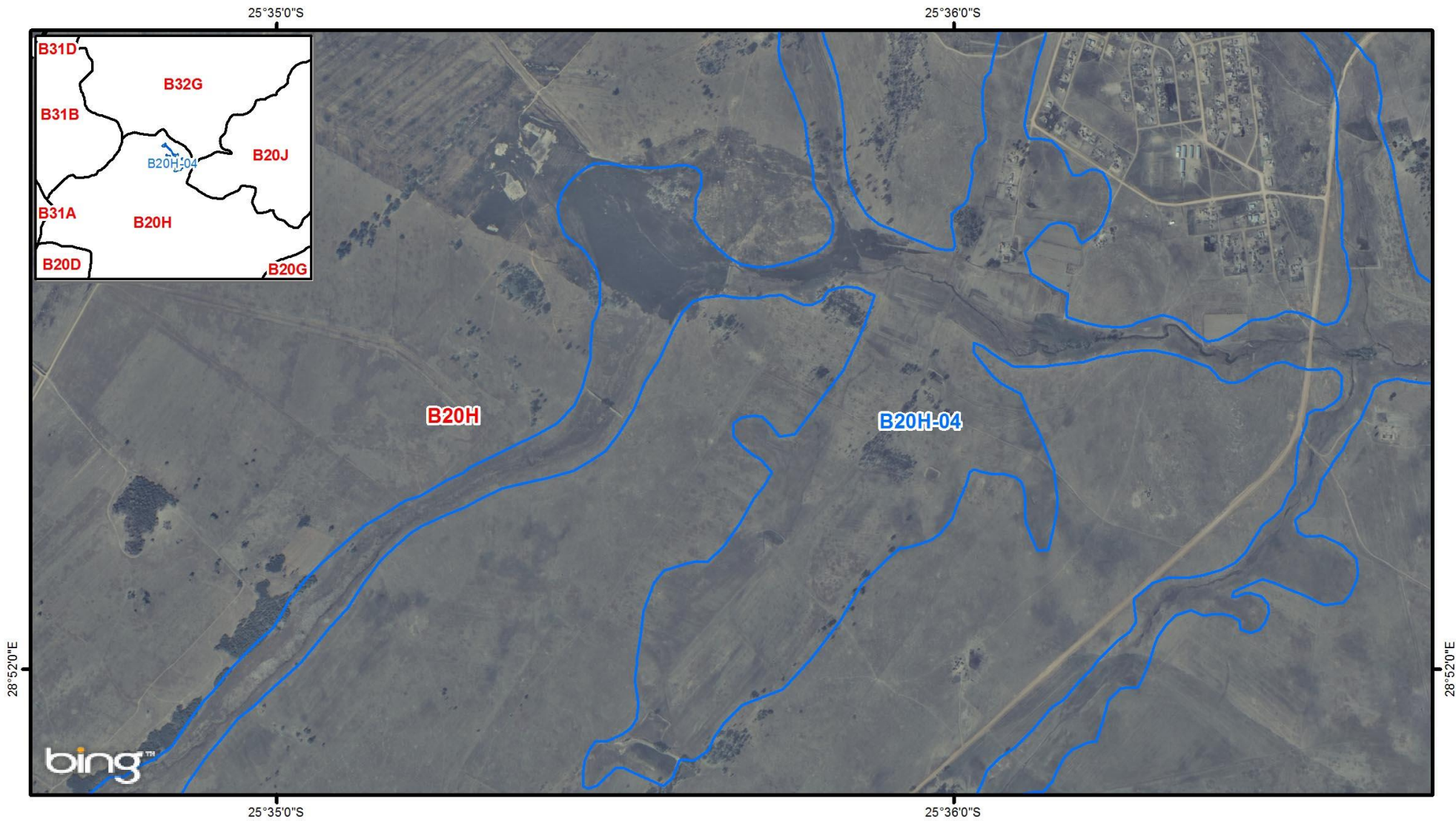
- ▭ Quaternary Boundary
- ▭ Wetlands





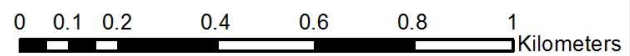
Co ordinate system : Geographic
Datum : WGS84

Gauteng - Gauteng North - A21C-01 - Cluny Farm - m01

1:5,000



-  Quaternary Boundary
-  Wetlands



Co ordinate system : Geographic
Datum : WGS84

Gauteng - Gauteng North - B20H-04 - Sokhulumi Wetland - m01

1:20,000