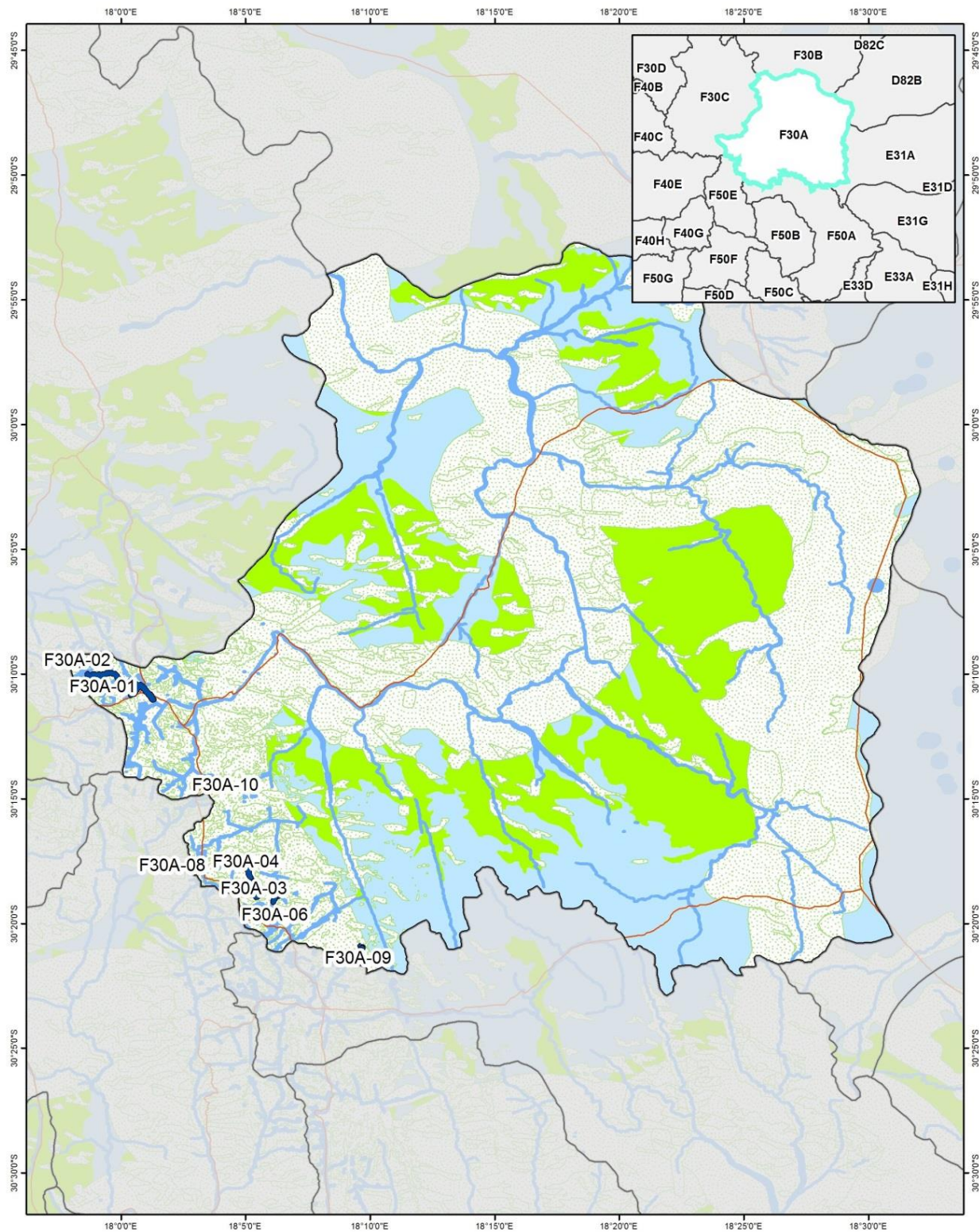


Appendix A

LOCALITY MAPS

Please note that the quaternary catchment maps F30C and F50E have been excluded but will be included in the Final Basic Assessment Report.

However the maps for the particular wetlands within these catchments have been included and feature with this Appendix.



Legend

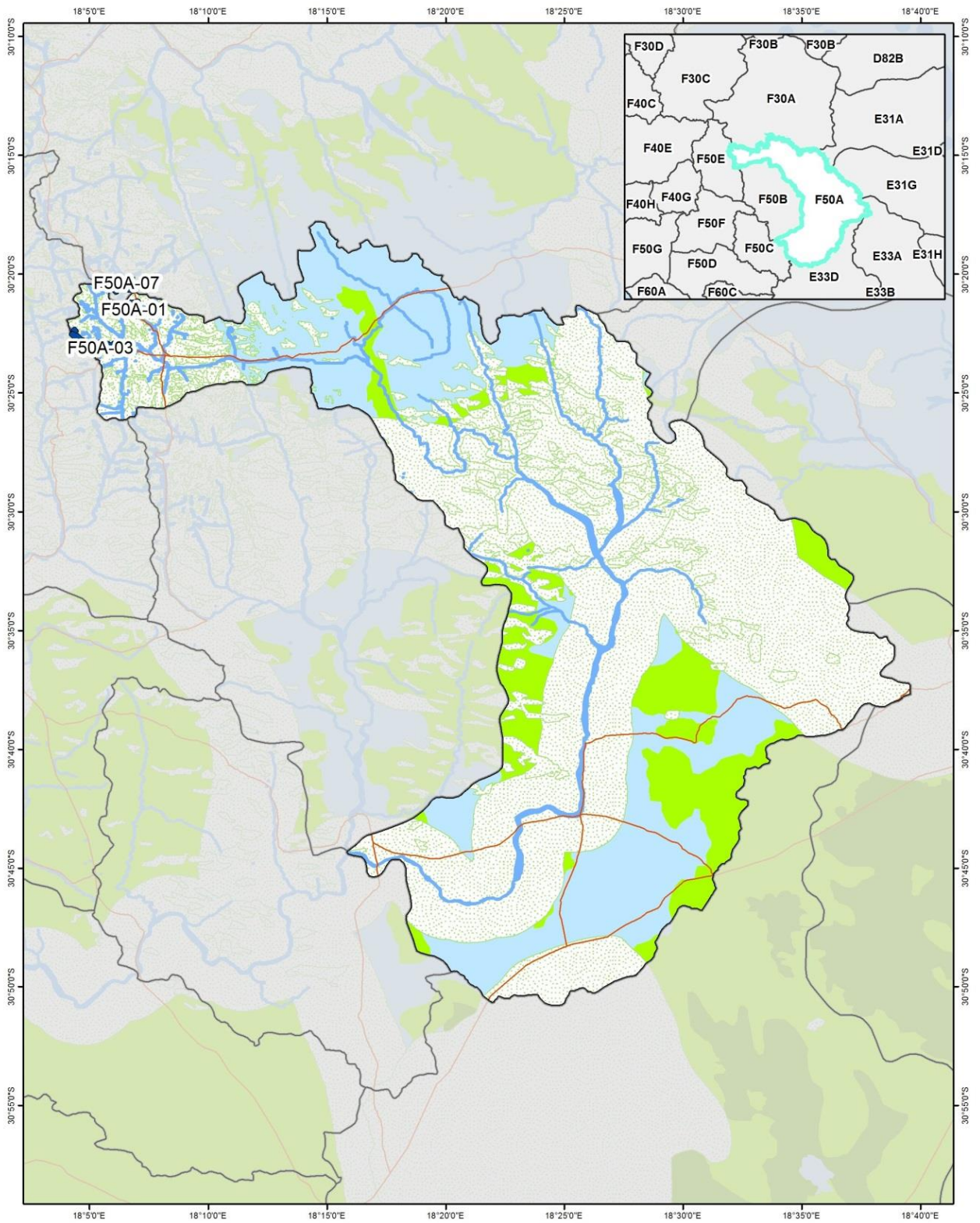
Wetland	Protected areas	Ecosystem protection level	Ecosystems threat status
Quaternary boundary	CBA (terrestrial)	Well protected	Vulnerable
Roads	CBA (aquatic)	Moderately protected	Endangered
		Poorly protected	Critically endangered



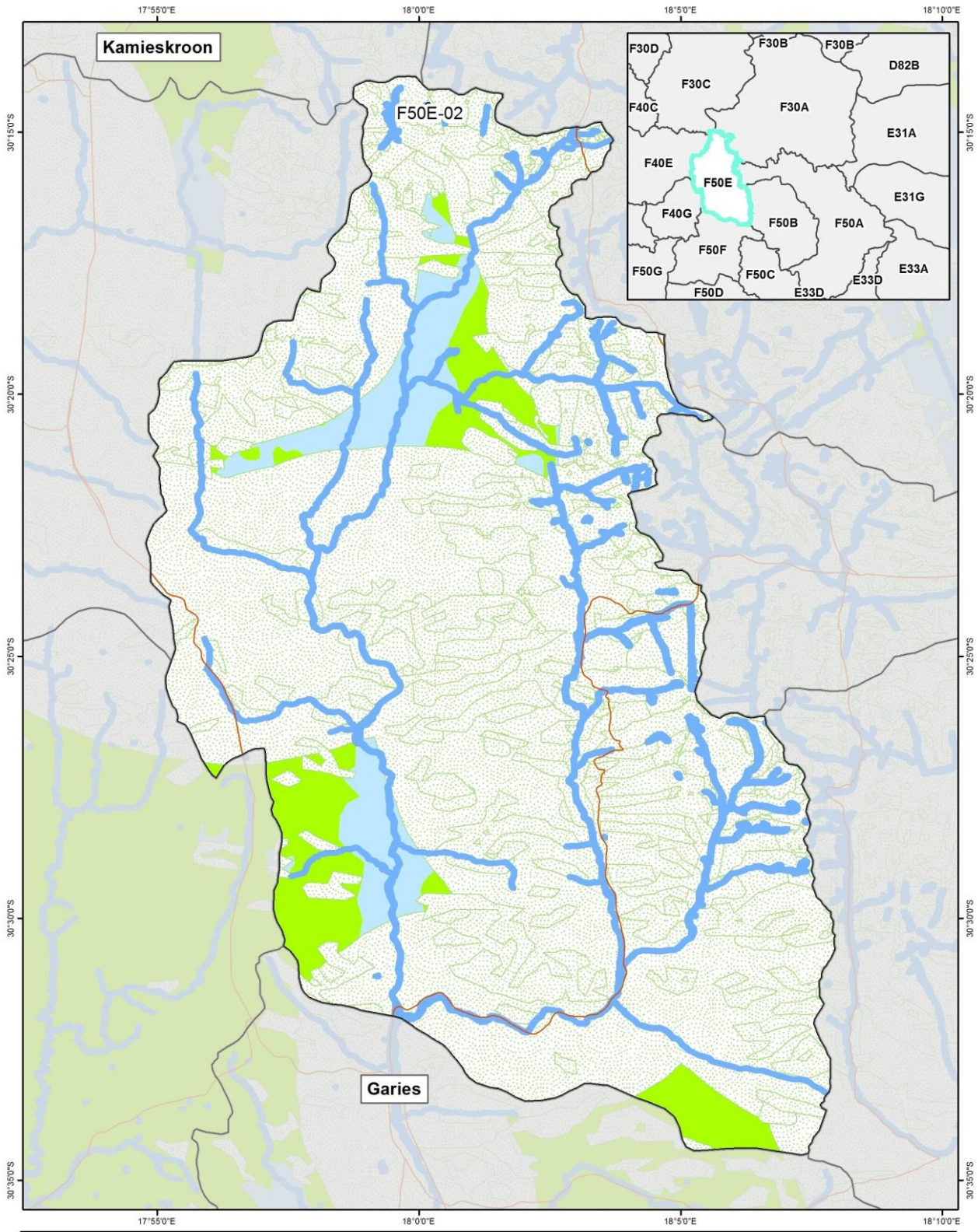
Coordinate system : Geographic
Datum : WGS84

Northern Cape - Kamiesberg - F30A

1:368,180



Legend		Ecosystem protection level		Ecosystems threat status	
Wetland	Protected areas	Well protected	Vulnerable	N	
Quaternary boundary	CBA (terrestrial)	Moderately protected	Endangered		
Roads	CBA (aquatic)	Poorly protected	Critically endangered		
Coordinate system : Geographic Datum : WGS84		Northern Cape - Kamiesberg - F50A		1:383,500	



Legend

- | | | | |
|---------------------|-------------------|-----------------------------------|---------------------------------|
| Wetland | Protected areas | Ecosystem protection level | Ecosystems threat status |
| Quaternary boundary | CBA (terrestrial) | Well protected | Vulnerable |
| Roads | CBA (aquatic) | Moderately protected | Endangered |
| | | Poorly protected | Critically endangered |

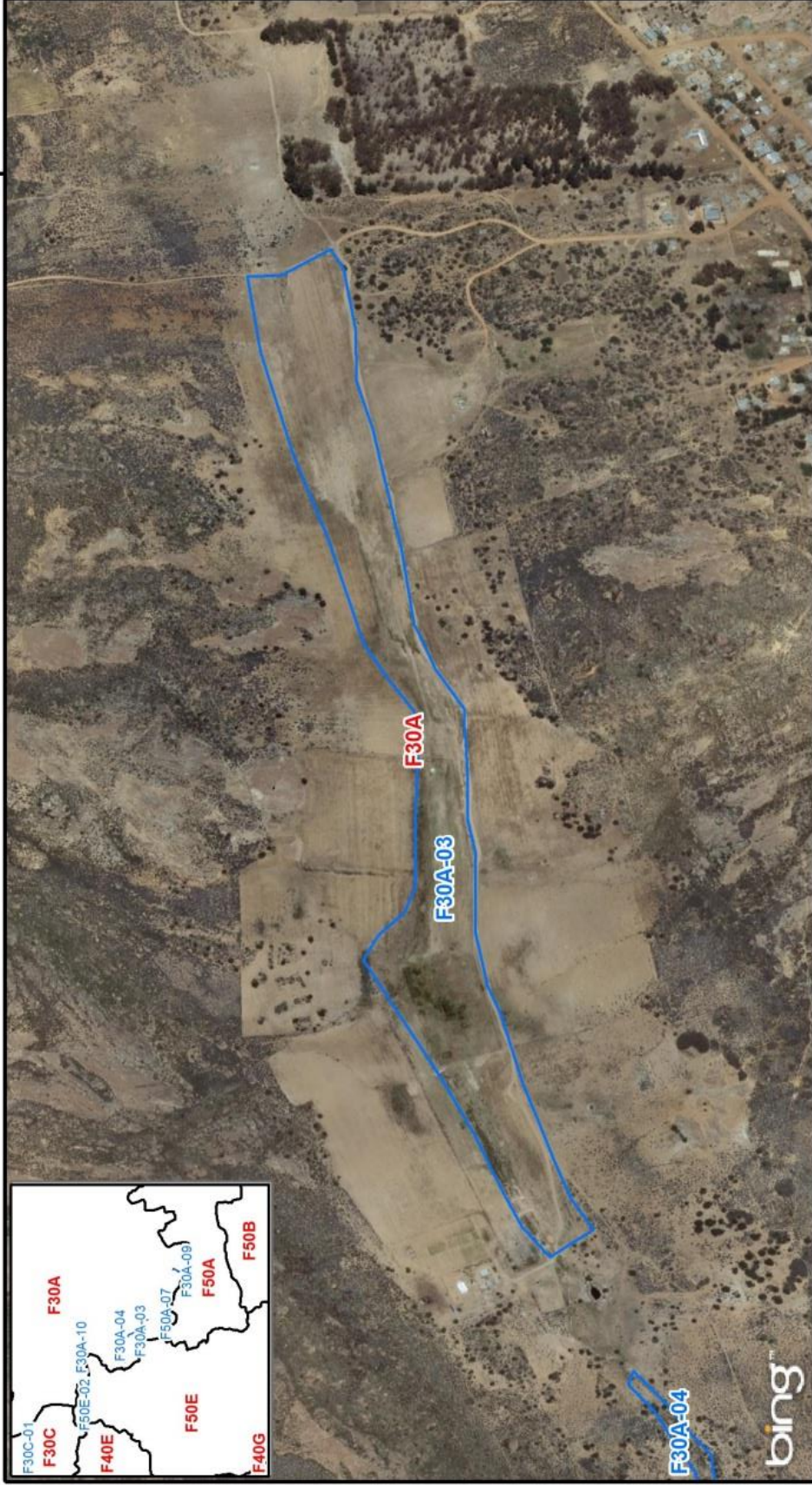


Coordinate system : Geographic
Datum : WGS84

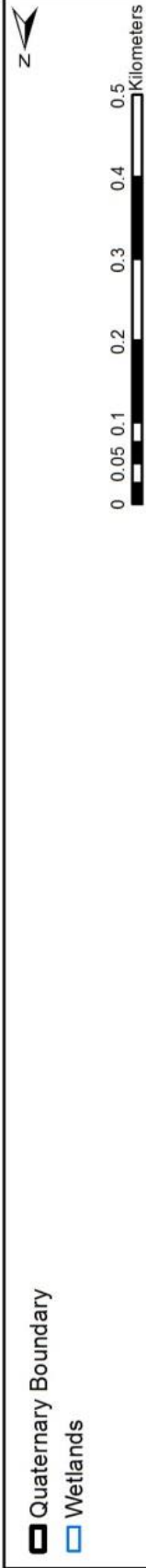
Northern Cape - Kamiesberg - F50E

1:174,890

30°19'0"S



30°19'0"S

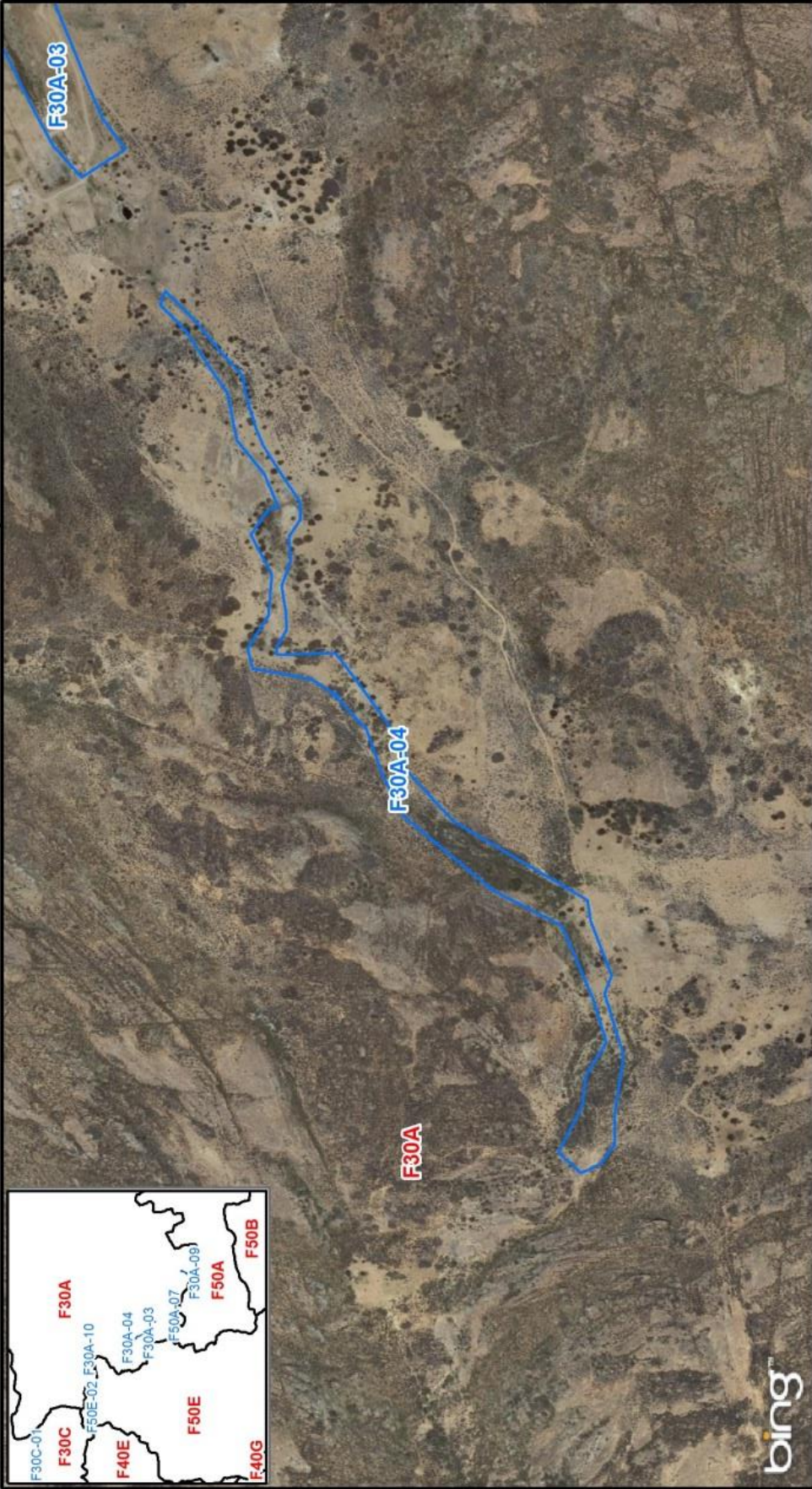
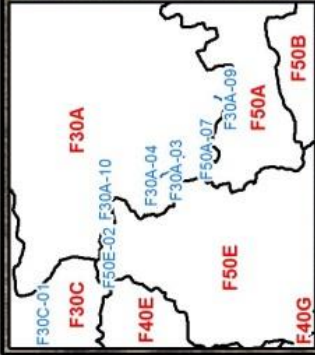


Co ordinate system : Geographic
 Datum : WGS84

Northern Cape - Kamiesberg - F30A-03 - Kleikop - m01

1:10,000



30°18'0"S



18°5'0"E

18°5'0"E

30°18'0"S

-  Quaternary Boundary
-  Wetlands



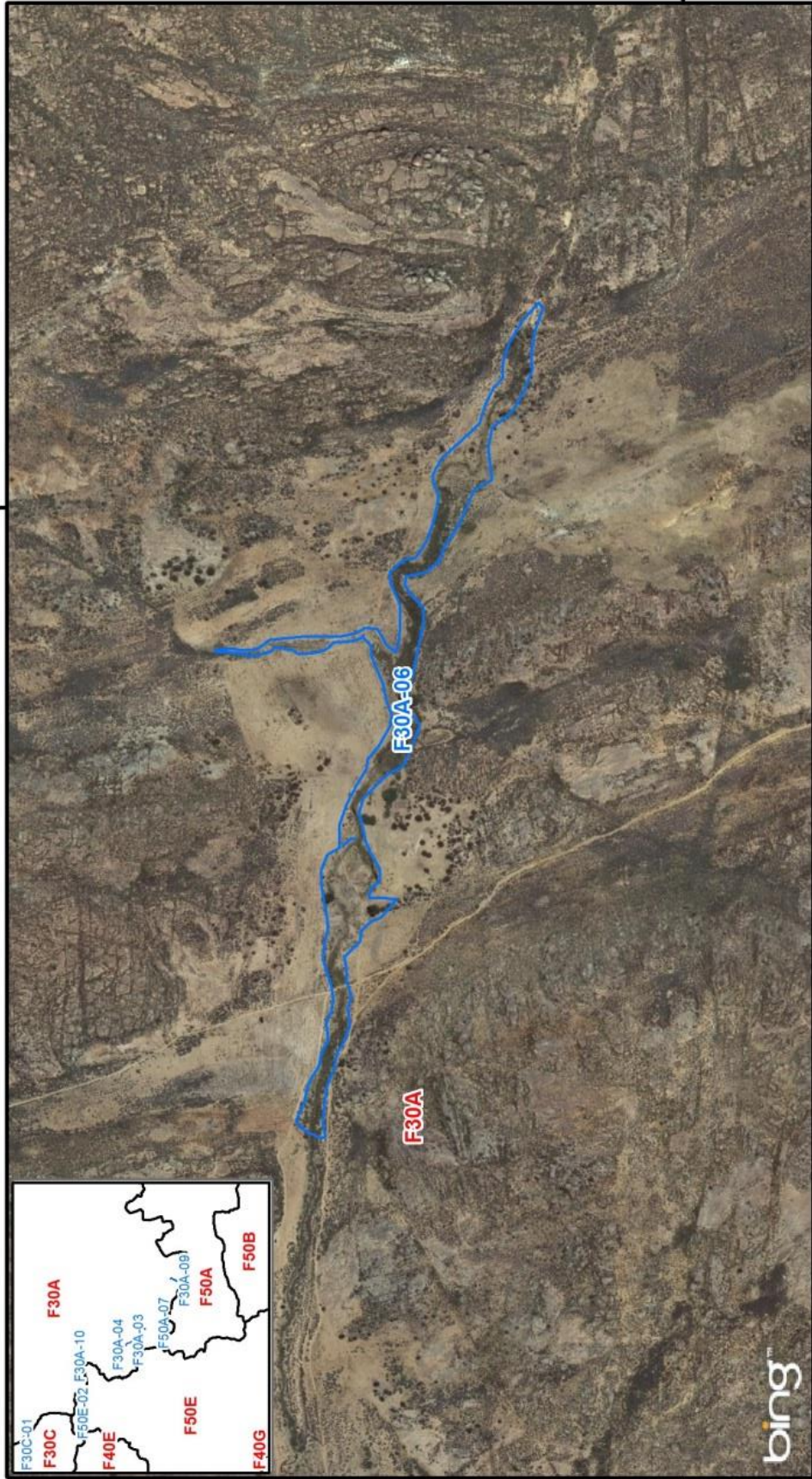
Co ordinate system : Geographic
Datum : WGS84

Northern Cape - Kamiesberg - F30A-04 - Kleikop - m01

1:10,000

30°19'0"S

18°6'0"E



30°19'0"S

18°6'0"E



Quaternary Boundary

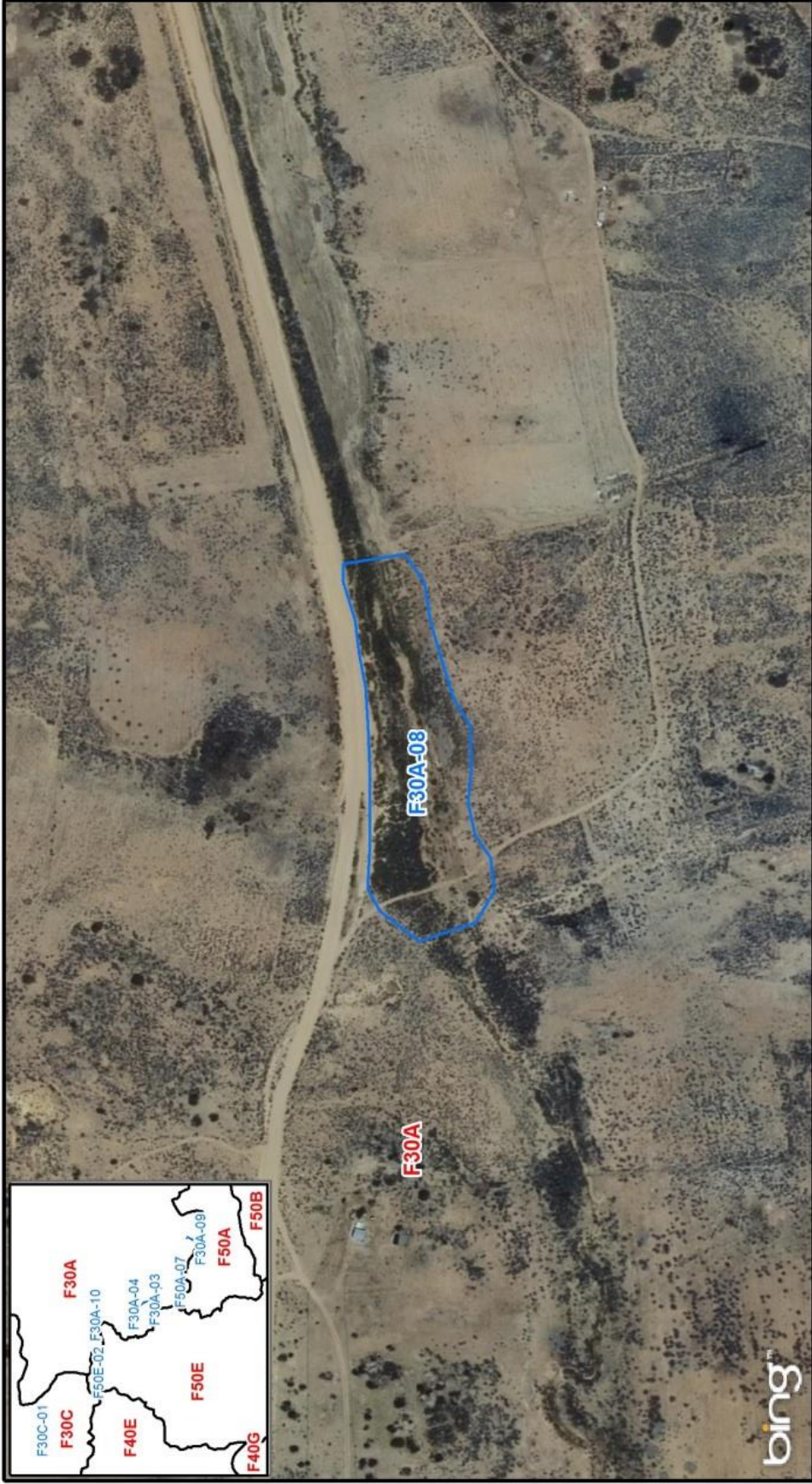
Wetlands





Co ordinate system : Geographic
 Datum : WGS84

Northern Cape - Kamiesberg - F30A-06 - Schaaprivier 3 - m01

1:10,000



 Quaternary Boundary
 Wetlands



0 0.0275 0.055 0.11 0.165 0.22 0.275
 Kilometers

Co ordinate system : Geographic
 Datum : WGS84

Northern Cape - Kamiesberg - F30A-08 - Langvlei - m01
 1:5,000

30°21'0"S



30°21'0"S

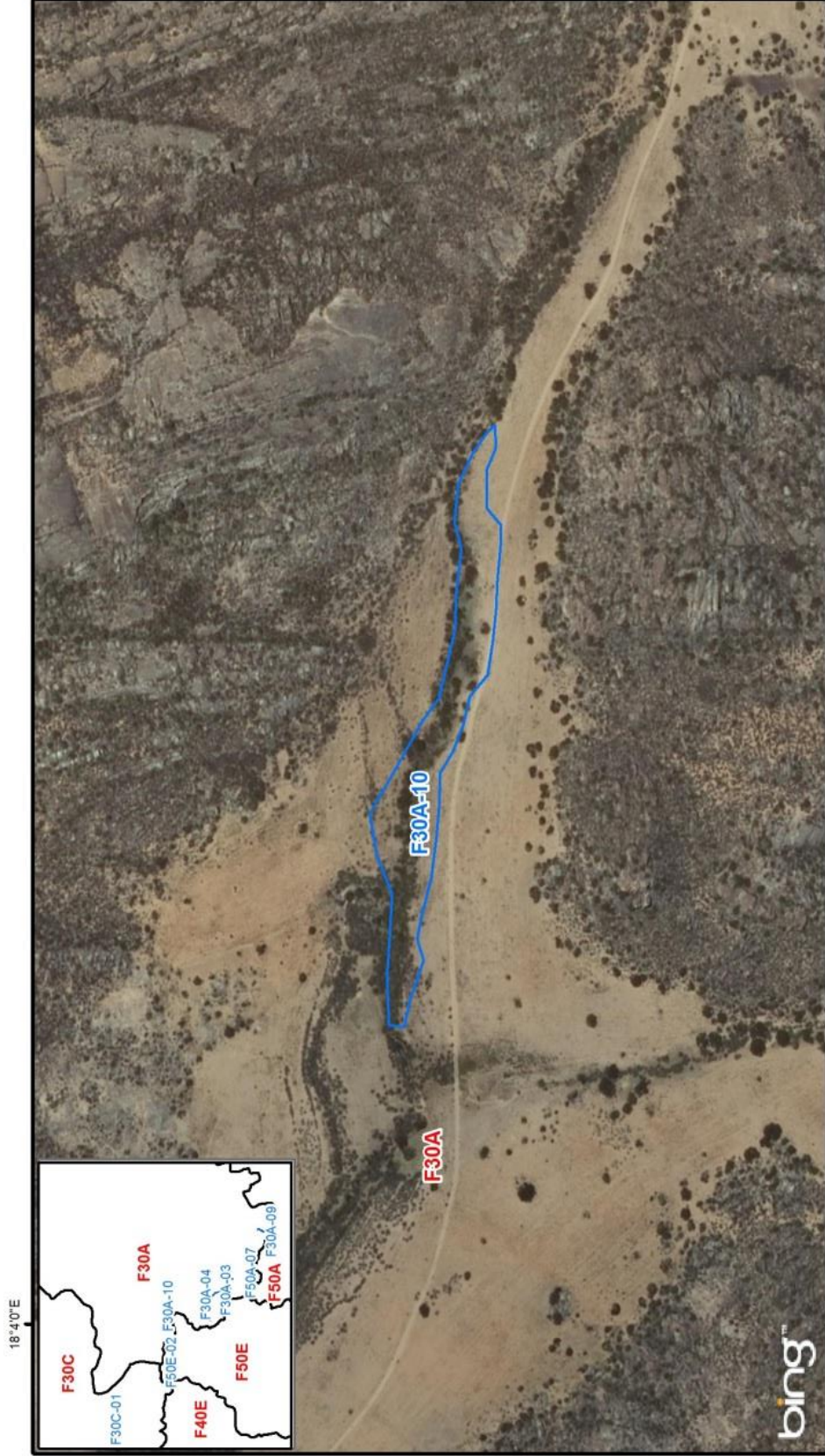
Quaternary Boundary
Wetlands

Co ordinate system : Geographic
Datum : WGS84

0 0.05 0.1 0.2 0.3 0.4 0.5 Kilometers

1:10,000

Northern Cape - Kamiesberg - F30A-09 - Natpad 5 - m01

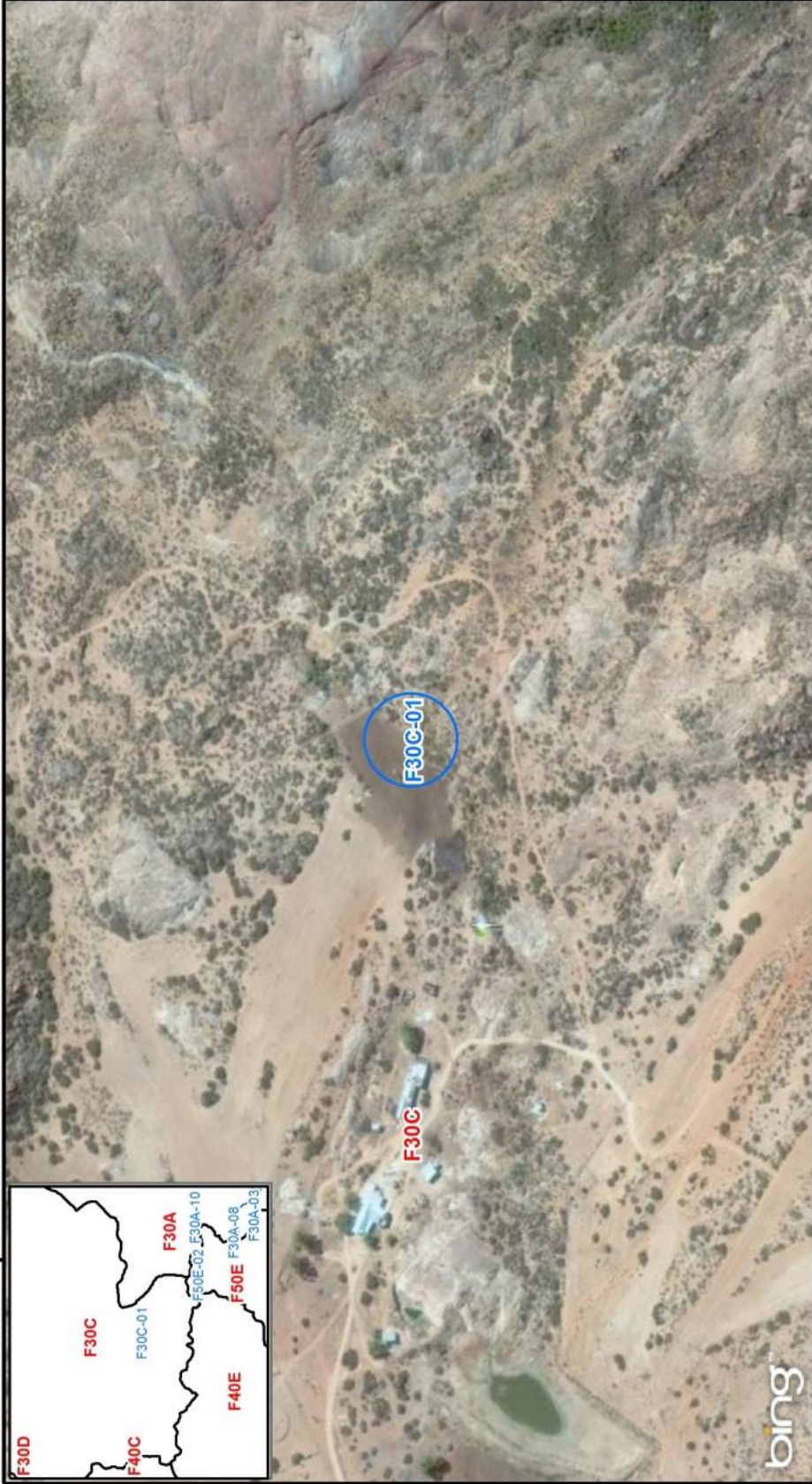
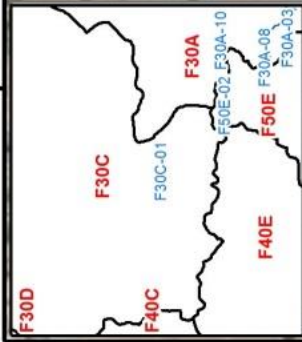


Co ordinate system : Geographic
 Datum : WGS84

Northern Cape - Kamiesberg - F30A-10 - Windpoort - m01

1:5,000

17°56'0"E



17°56'0"E

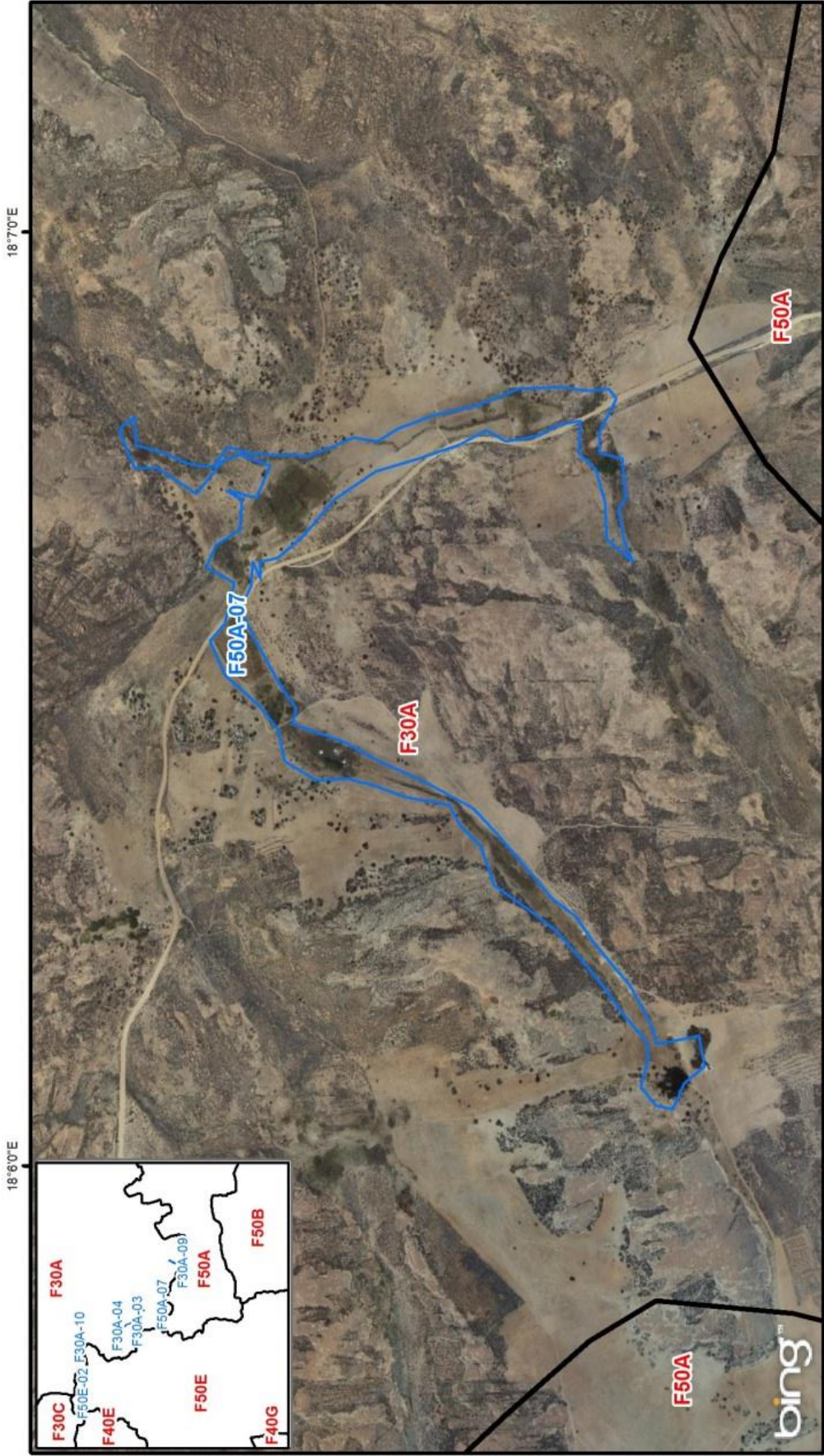
-  Quaternary Boundary
-  Wetlands



Co ordinate system : Geographic
 Datum : WGS84

Northern Cape - Kamiesberg - F30C-01 - Kleingas - m01

1:5,000

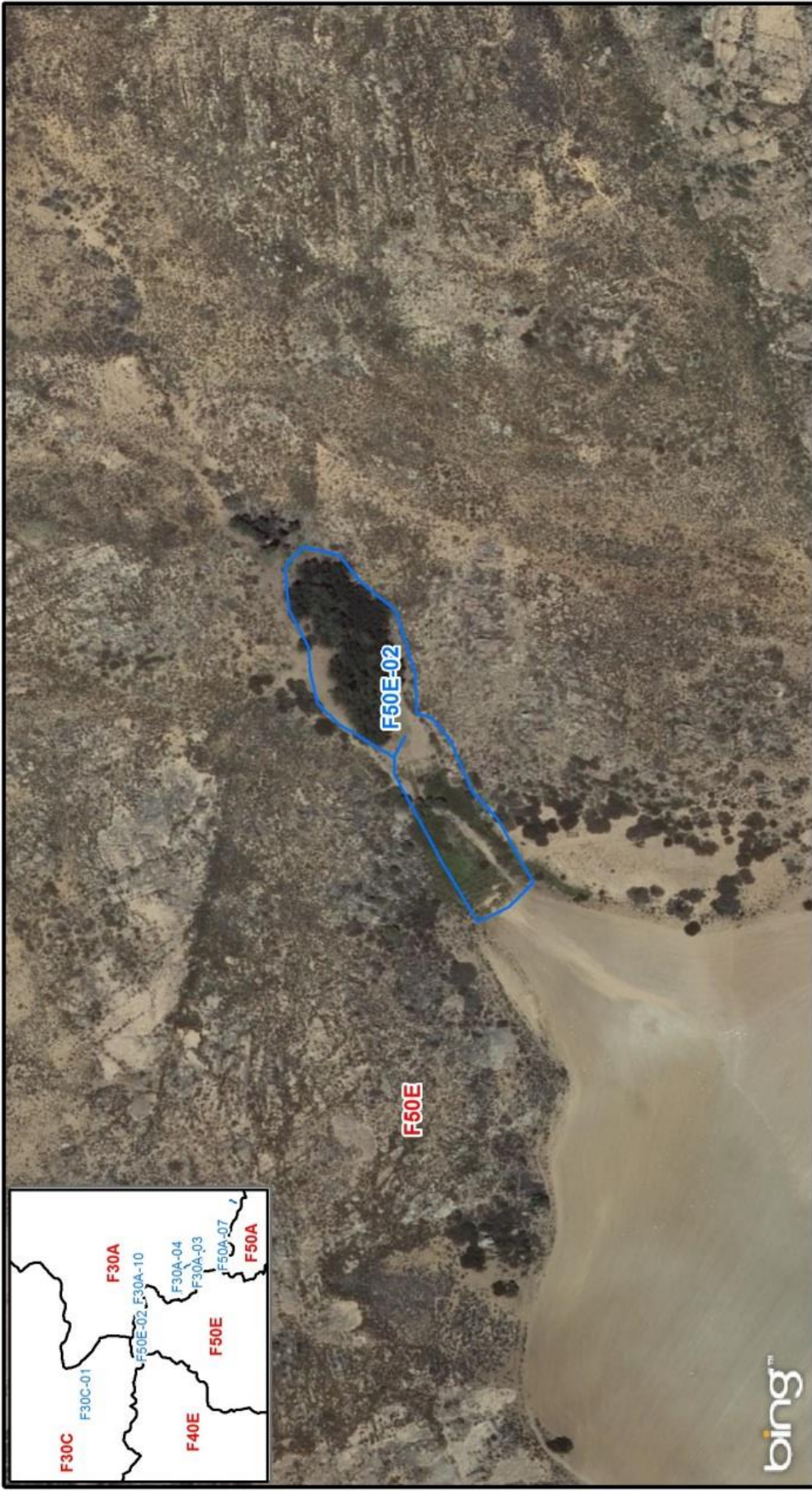


Quaternary Boundary
 Wetlands

Co ordinate system : Geographic
 Datum : WGS84

0 0.0750.15 0.3 0.45 0.6 0.75 Kilometers
 1:15,000

Northern Cape - Kamiesberg - F50A-07 - Xharas - m01




 Quaternary Boundary
 Wetlands

0 0.0275 0.055 0.11 0.165 0.22 0.275 Kilometers
 1:5,000

Northern Cape - Kamiesberg - F50E-02 - Kraaifontein 1 - m01

Co ordinate system : Geographic
 Datum : WGS84



Quaternary Boundary
 Wetlands

0 0.027 0.055 0.11 0.165 0.22 0.275 Kilometers
 1:5,000

Co ordinate system : Geographic
 Datum : WGS84

N

Northern Cape - Kamiesberg - F50G-01 - Groenrivier - m01