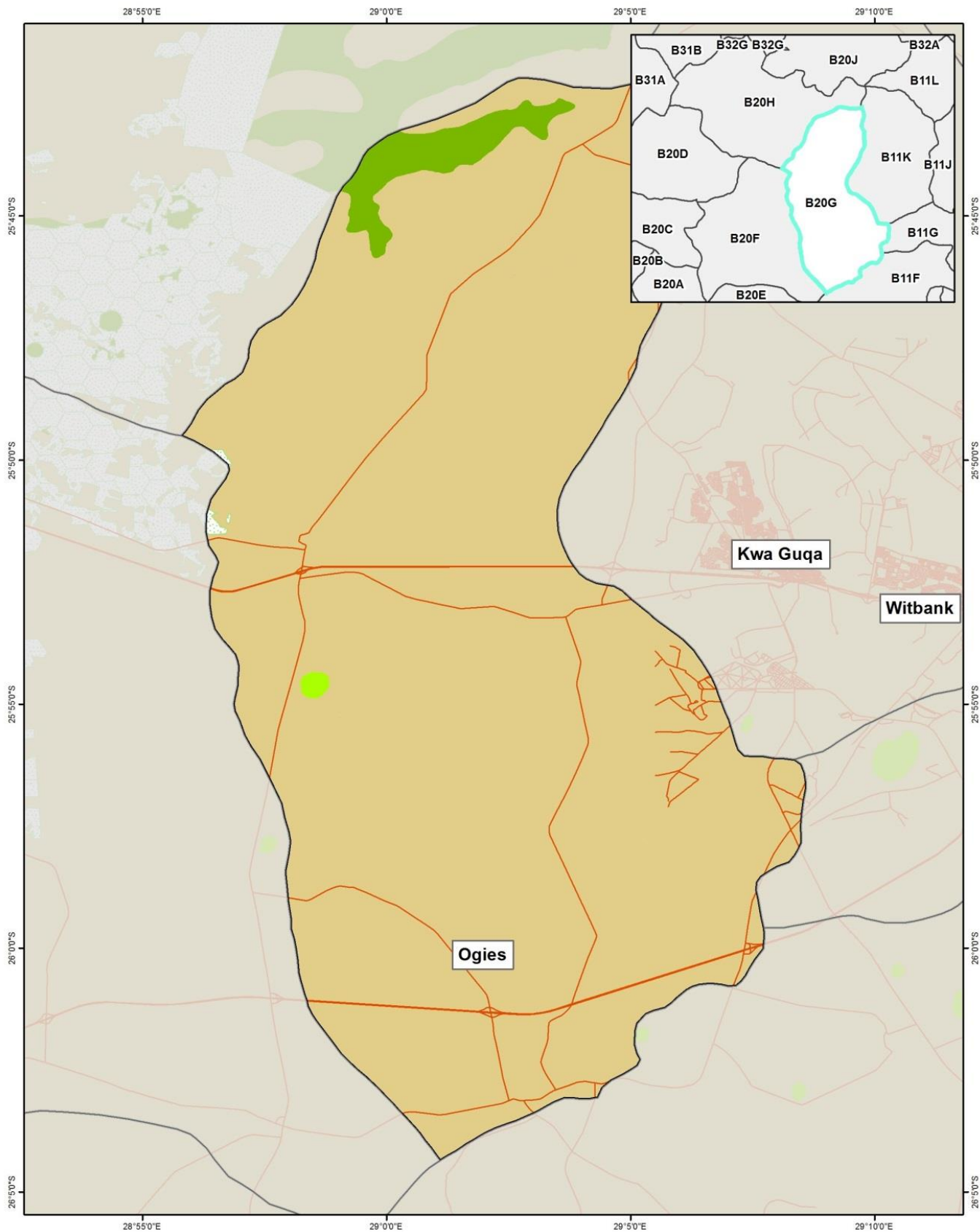


Appendix A

LOCALITY MAPS



Legend

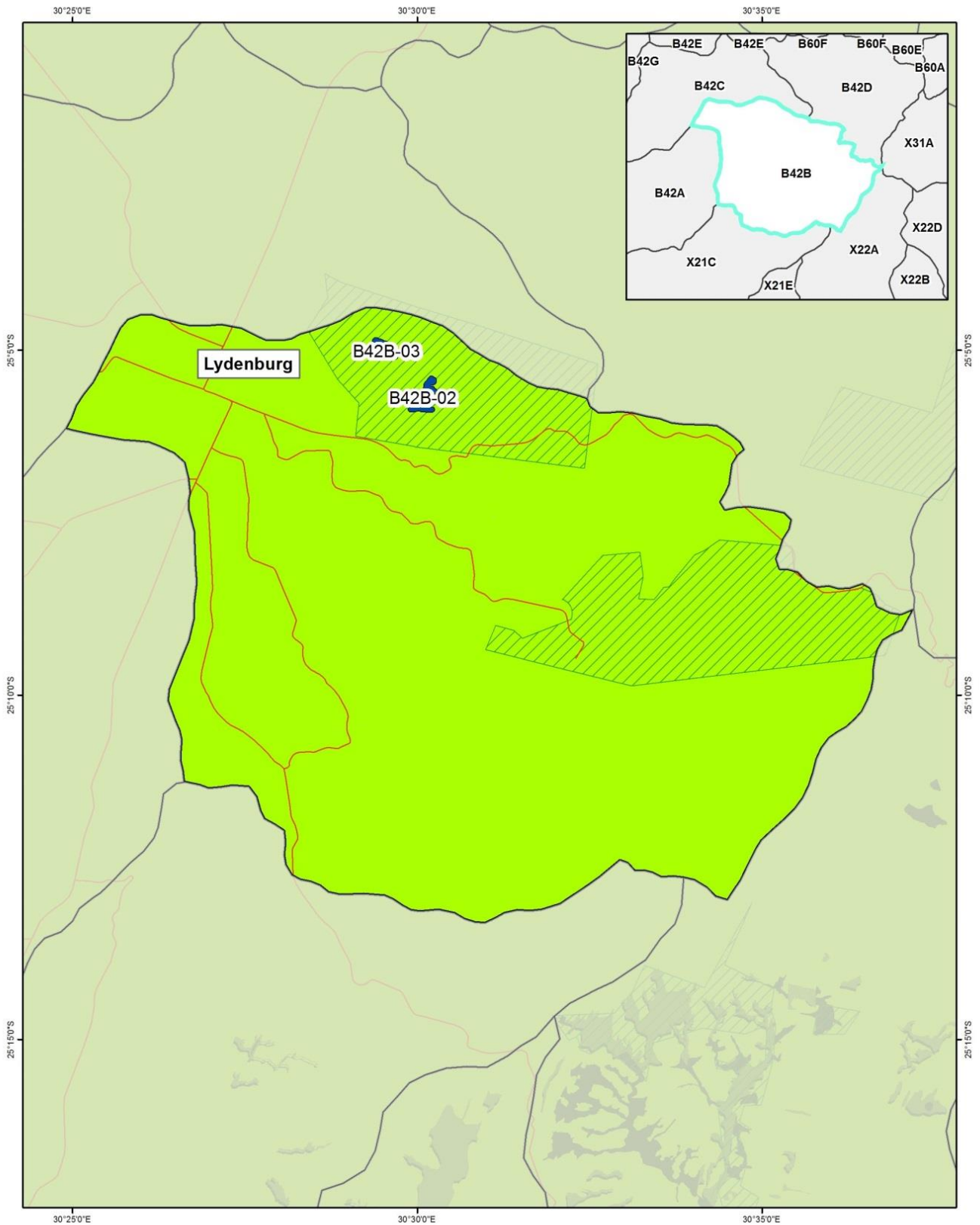
- | | | | |
|---------------------|-------------------|-----------------------------------|---------------------------------|
| Wetland | Protected areas | Ecosystem protection level | Ecosystems threat status |
| Quaternary boundary | CBA (terrestrial) | Well protected | Vulnerable |
| Roads | CBA (aquatic) | Moderately protected | Endangered |
| | | Poorly protected | Critically endangered |



Coordinate system : Geographic
Datum : WGS84

Mpumalanga - Highveld - B20G

1:188,310



Legend

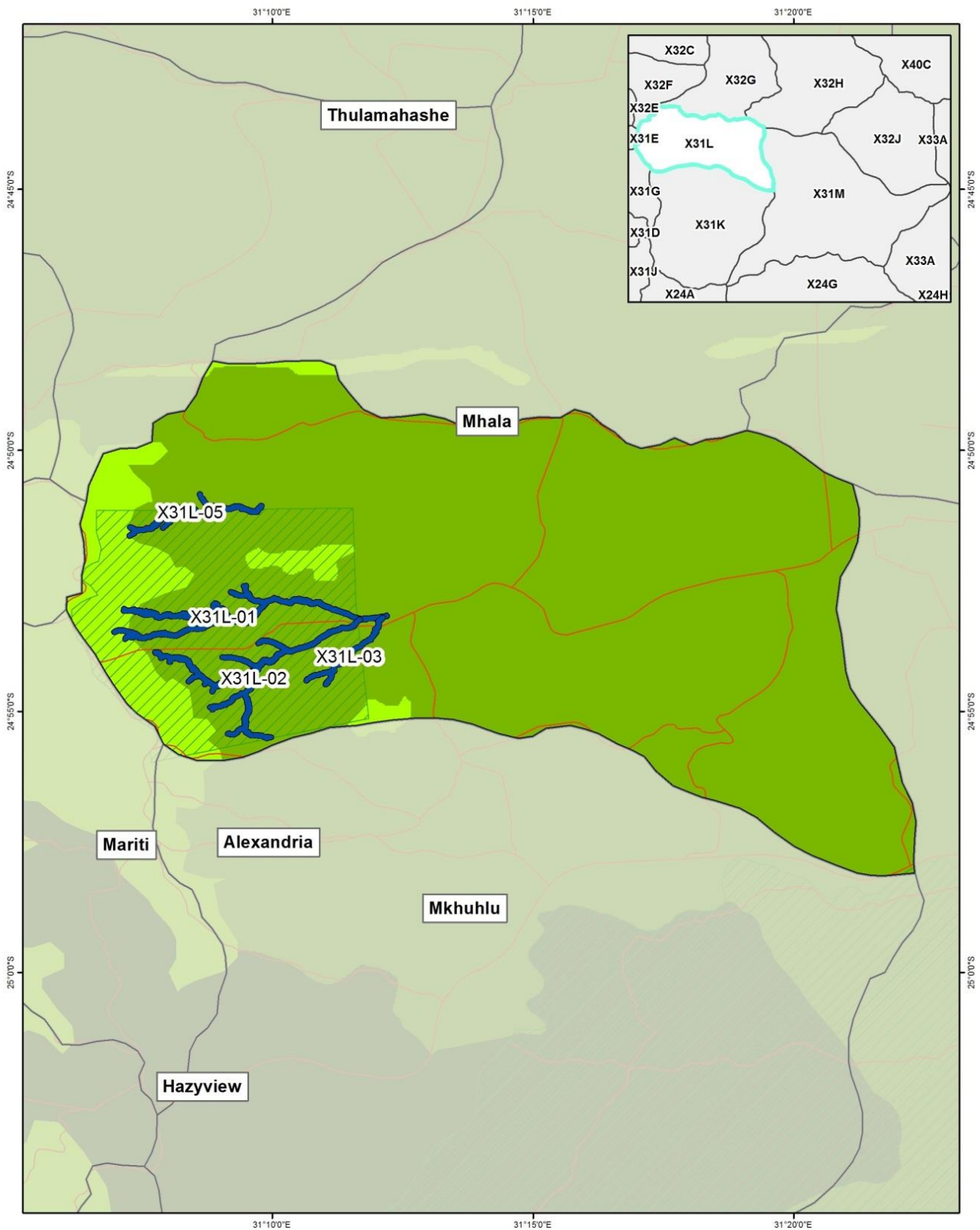
- | | | | |
|---------------------|-------------------|-----------------------------------|---------------------------------|
| Wetland | Protected areas | Ecosystem protection level | Ecosystems threat status |
| Quaternary boundary | CBA (terrestrial) | Well protected | Vulnerable |
| Roads | CBA (aquatic) | Moderately protected | Endangered |
| | | Poorly protected | Critically endangered |



Coordinate system : Geographic
Datum : WGS84

Mpumalanga - Lowveld - B42B

1:132,600



Legend

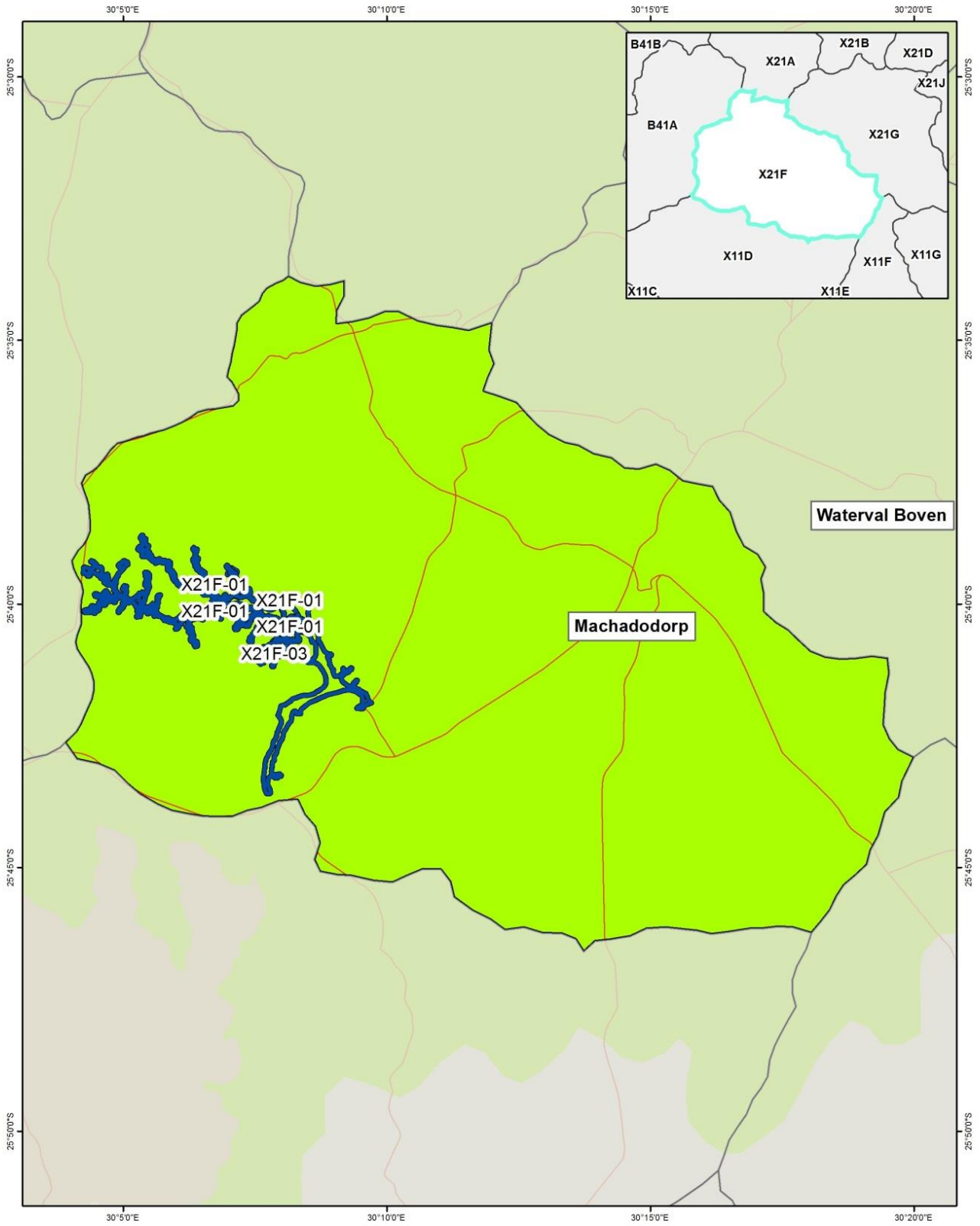
- | | | | |
|---------------------|-------------------|-----------------------------------|---------------------------------|
| Wetland | Protected areas | Ecosystem protection level | Ecosystems threat status |
| Quaternary boundary | CBA (terrestrial) | Well protected | Vulnerable |
| Roads | CBA (aquatic) | Moderately protected | Endangered |
| | | Poorly protected | Critically endangered |



Coordinate system : Geographic
Datum : WGS84

Mpumalanga - Lowveld - X31L

1:175,760



Legend

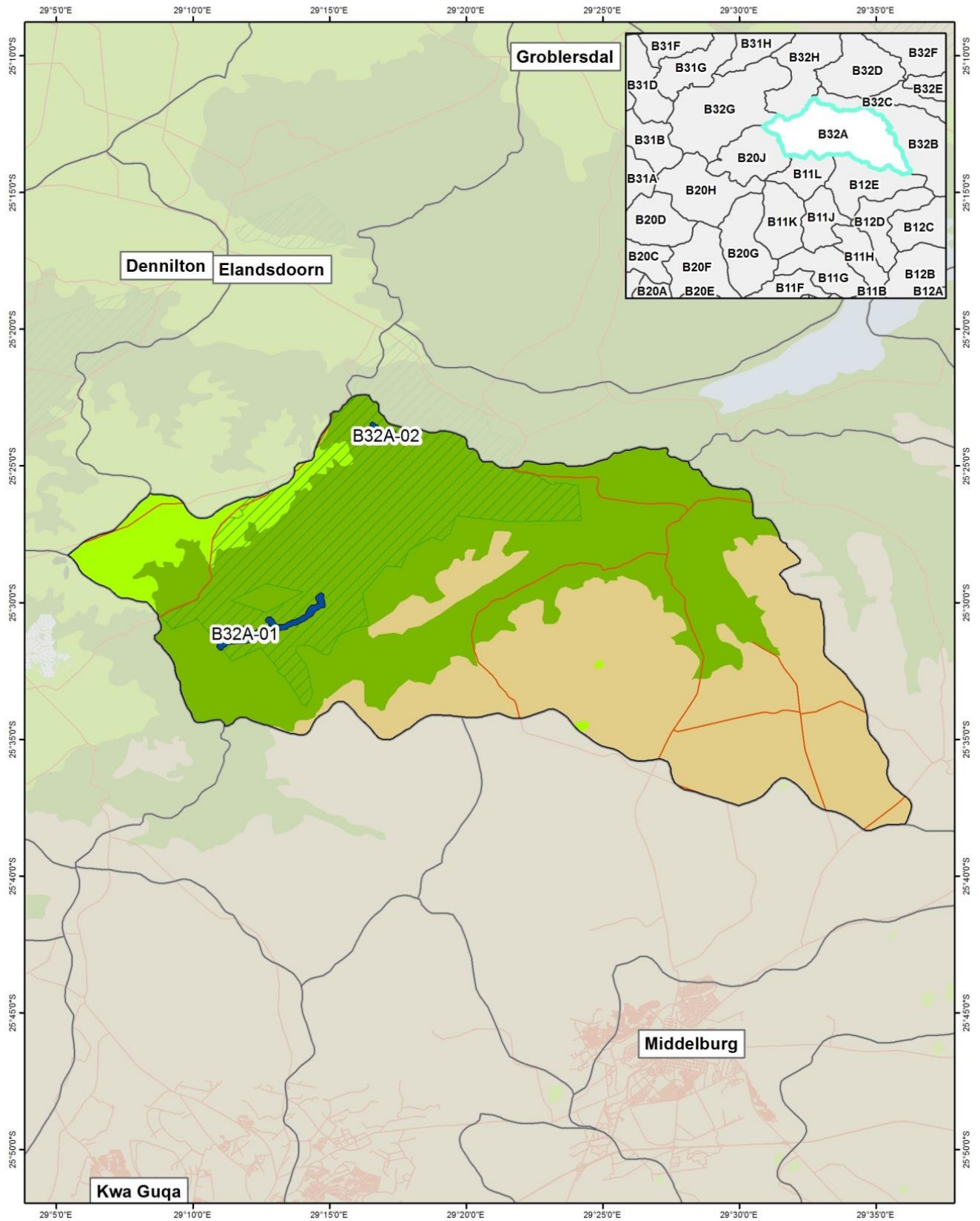
Wetland	Protected areas	Ecosystem protection level	Ecosystems threat status
Quaternary boundary	CBA (terrestrial)	Well protected	Vulnerable
Roads	CBA (aquatic)	Moderately protected	Endangered
		Poorly protected	Critically endangered



Coordinate system : Geographic
Datum : WGS84

Mpumalanga - Nkomati - X21F

1:173,350



Legend

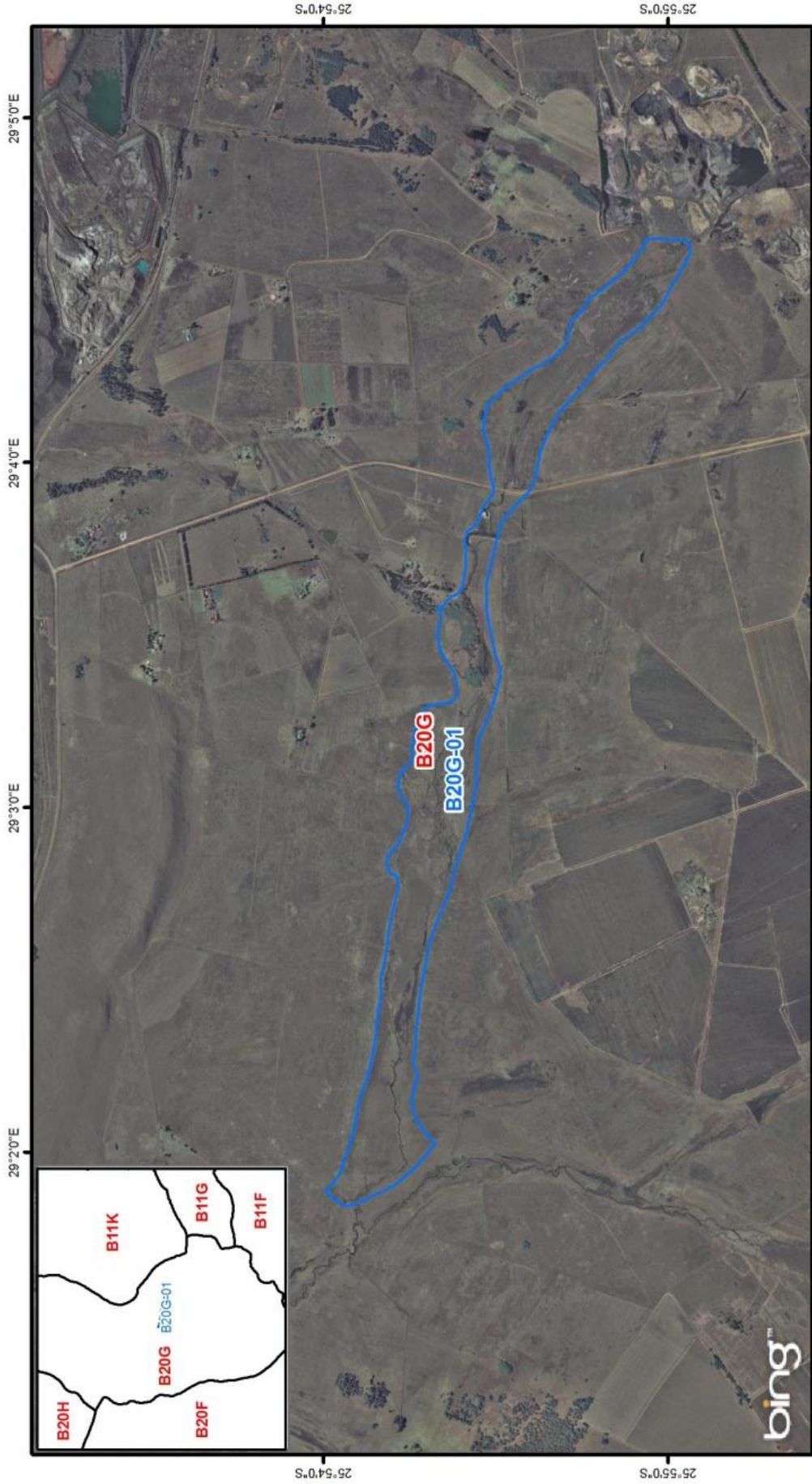
- | | | | |
|---------------------|-------------------|-----------------------------------|---------------------------------|
| Wetland | Protected areas | Ecosystem protection level | Ecosystems threat status |
| Quaternary boundary | CBA (terrestrial) | Well protected | Vulnerable |
| Roads | CBA (aquatic) | Moderately protected | Endangered |
| | | Poorly protected | Critically endangered |



Coordinate system : Geographic
Datum : WGS84

Mpumalanga - Steelpoort - B32A

1:333,190



 Quaternary Boundary
 Wetlands

 N



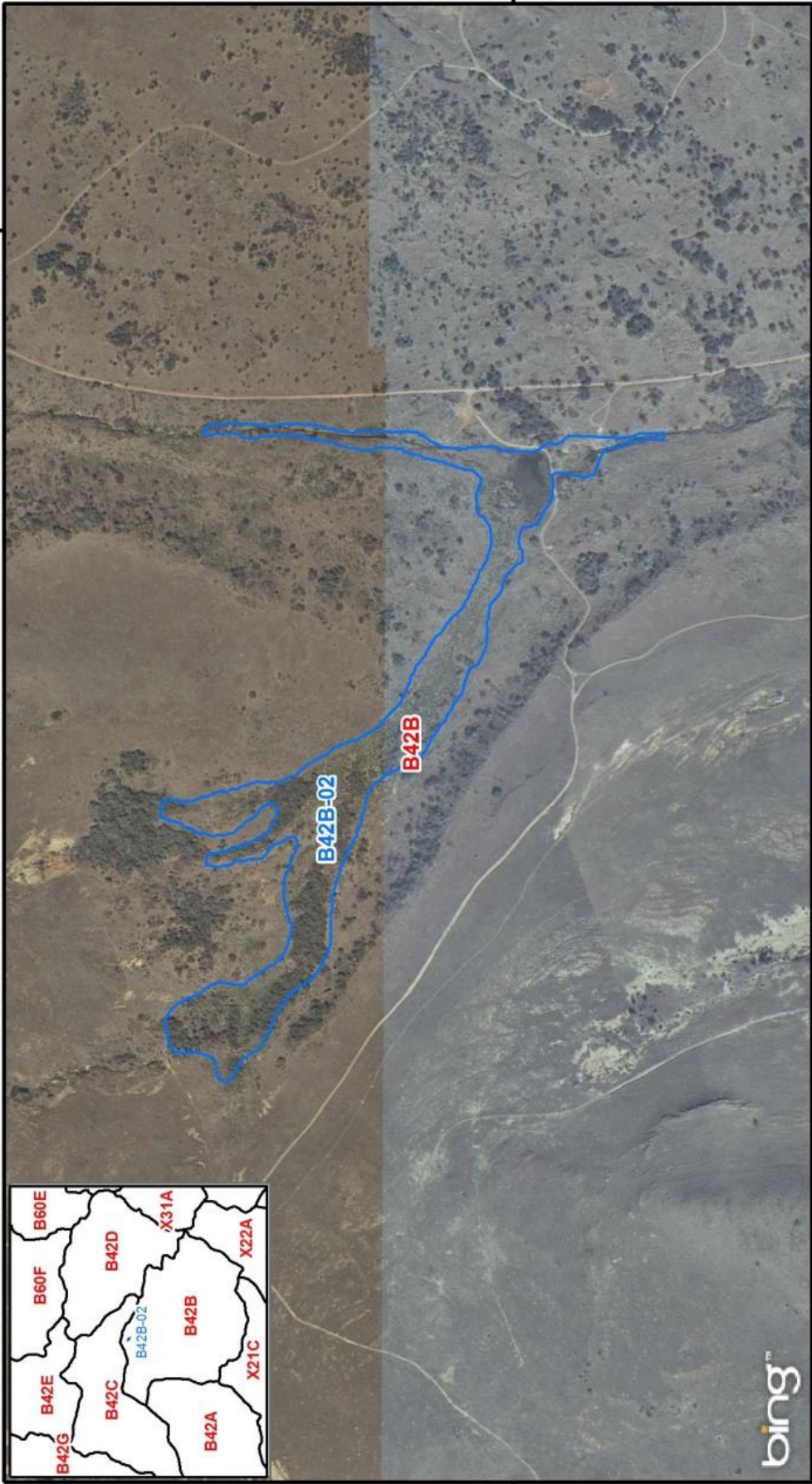
Co ordinate system : Geographic
 Datum : WGS84

Mpumalanga - Highveld - B20G-01 - Zaalklipspruit - m01

1:40,000

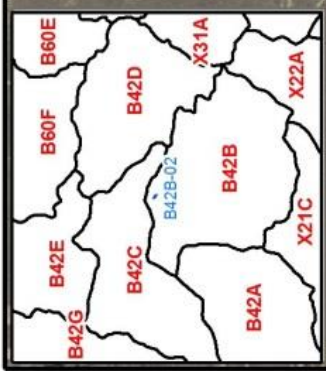
25°6'0"S

30°30'0"E



25°6'0"S

30°30'0"E



z

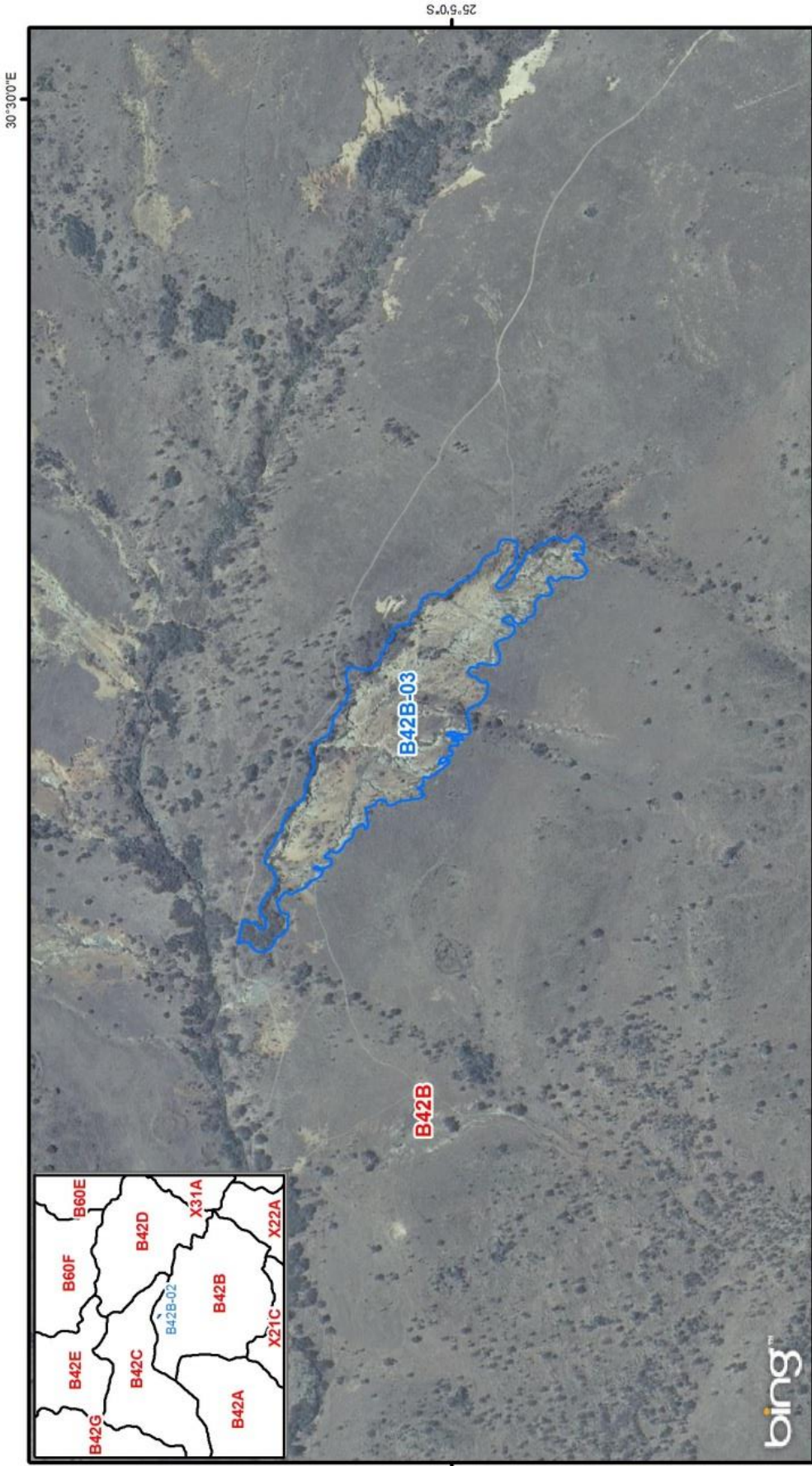
Quaternary Boundary

Wetlands

0 0.05 0.1 0.2 0.3 0.4 0.5 Kilometers

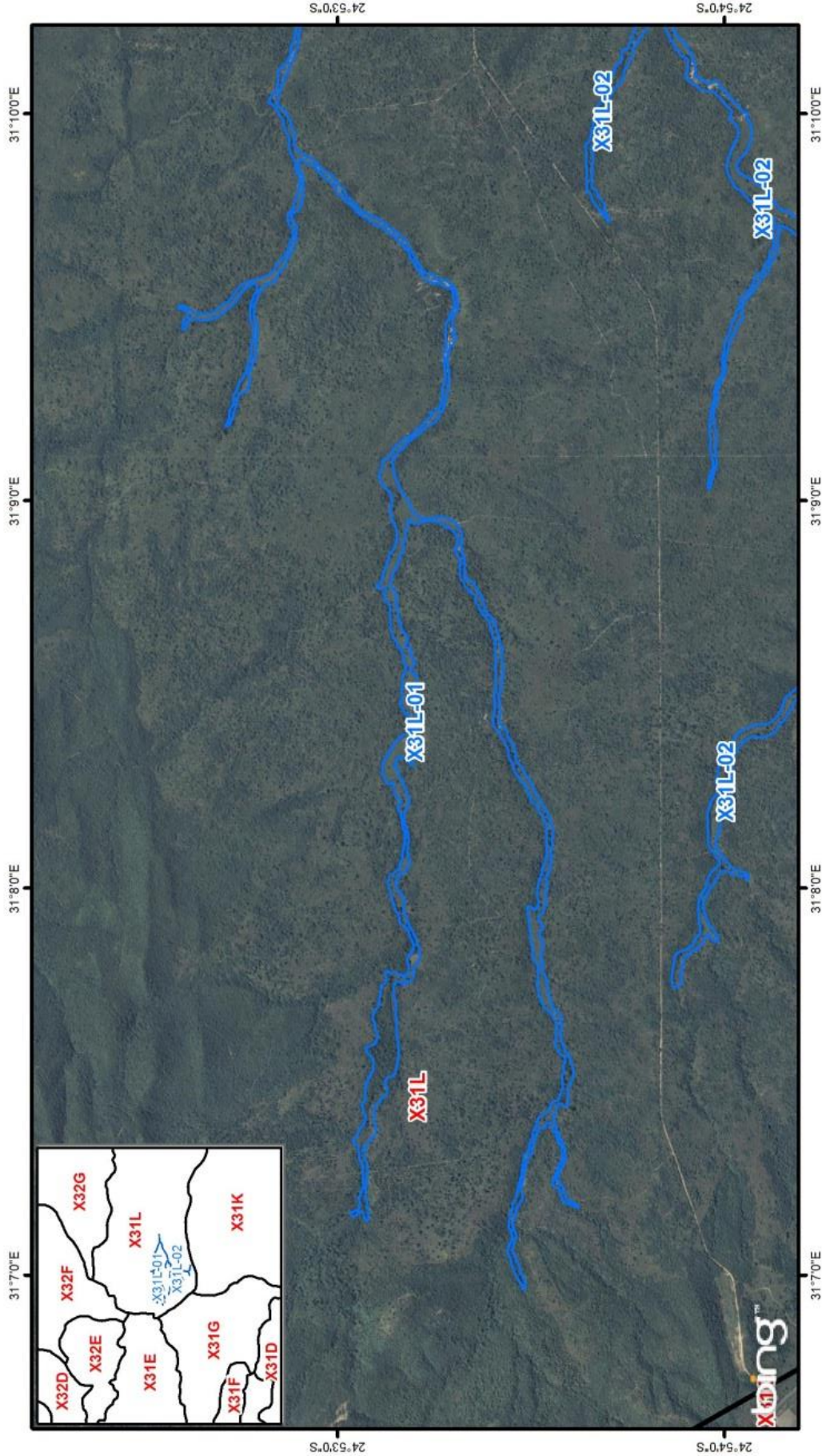
Co ordinate system : Geographic
 Datum : WGS84

Mpumalanga - Lowveld - B42B-02 - Gustav Klingbield (Dam Wall Stabilisation) - m01 1:10,000



Co ordinate system : Geographic
 Datum : WGS84

Mpumalanga - Lowveld - B42B-03 - Gustav Klingbield (Eroded Donga Area) - m01 1:10,000

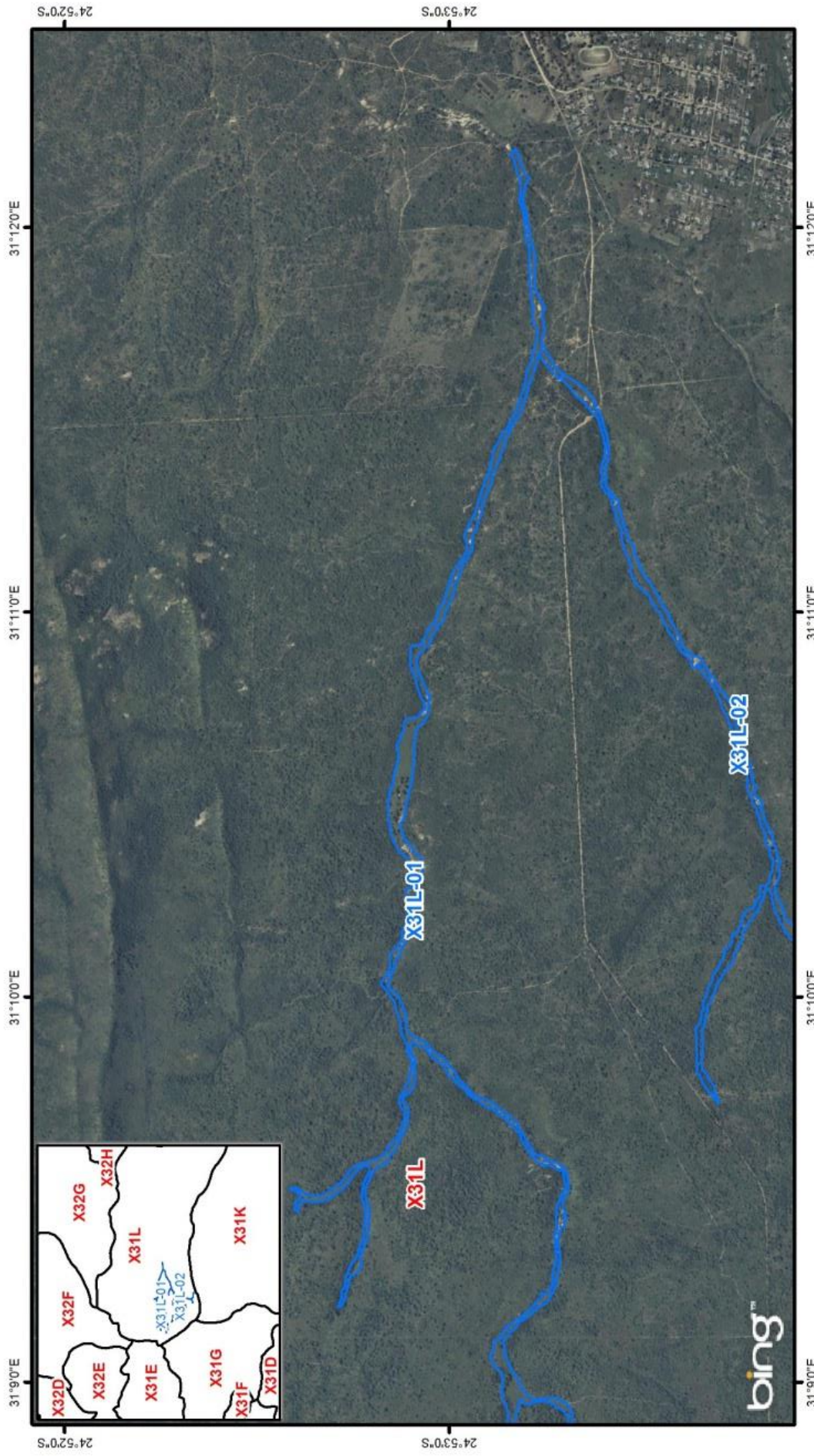


-  Quaternary Boundary
-  Wetlands

Co ordinate system : Geographic
 Datum : WGS84

Mpumalanga - Lowveld - X31L-01 - Saringwa - m01

1:35,000

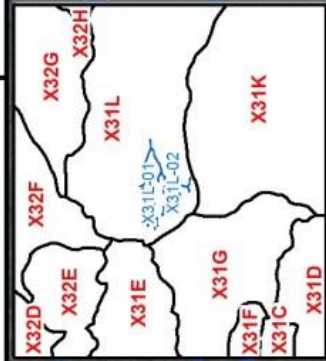
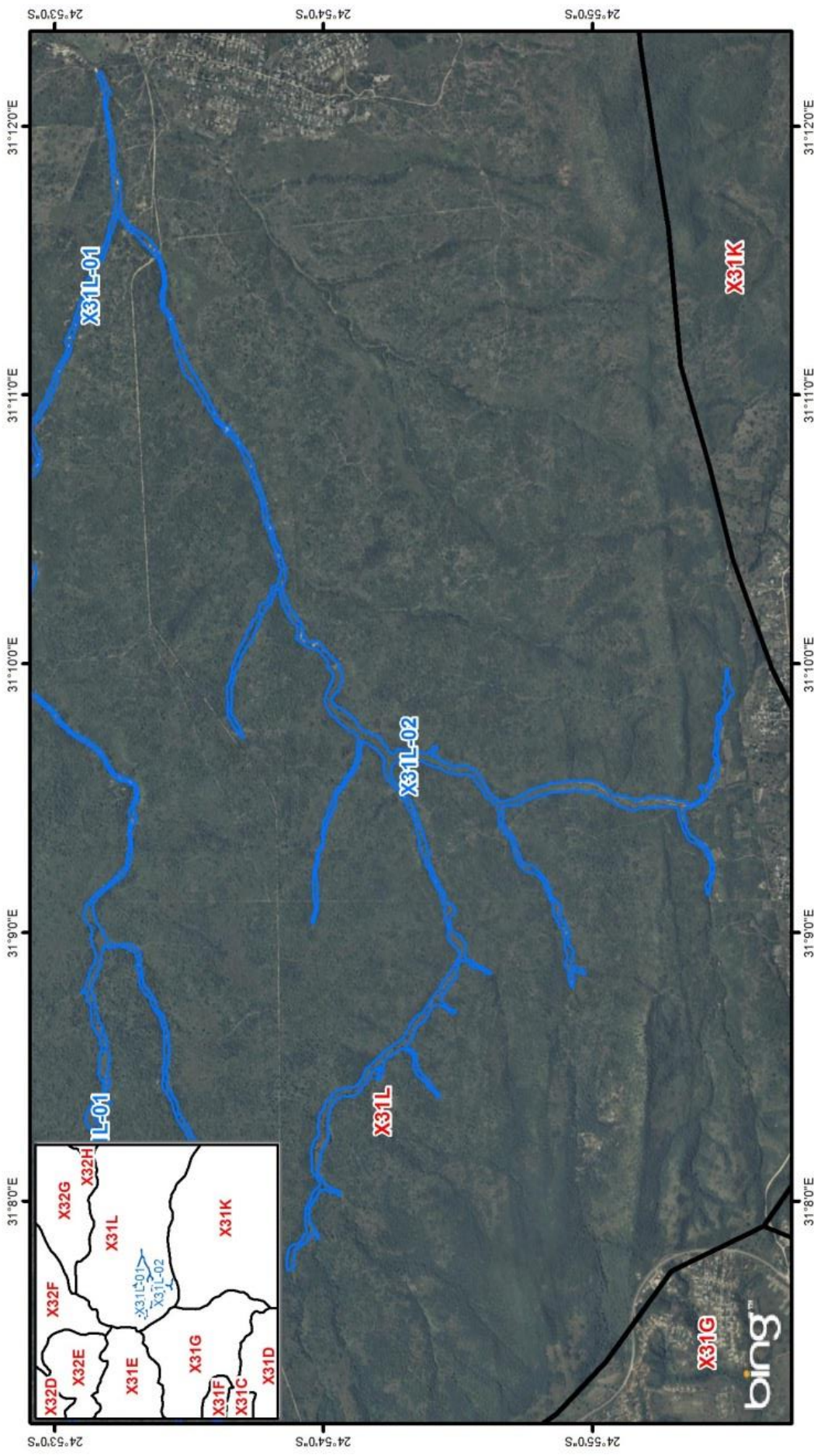


Quaternary Boundary
Wetlands

0 0.1750.35 0.7 1.05 1.4 1.75 Kilometers

Co ordinate system : Geographic
 Datum : WGS84

Mpumalanga - Lowveld - X31L-01 - Saringwa - m02
 1:35,000



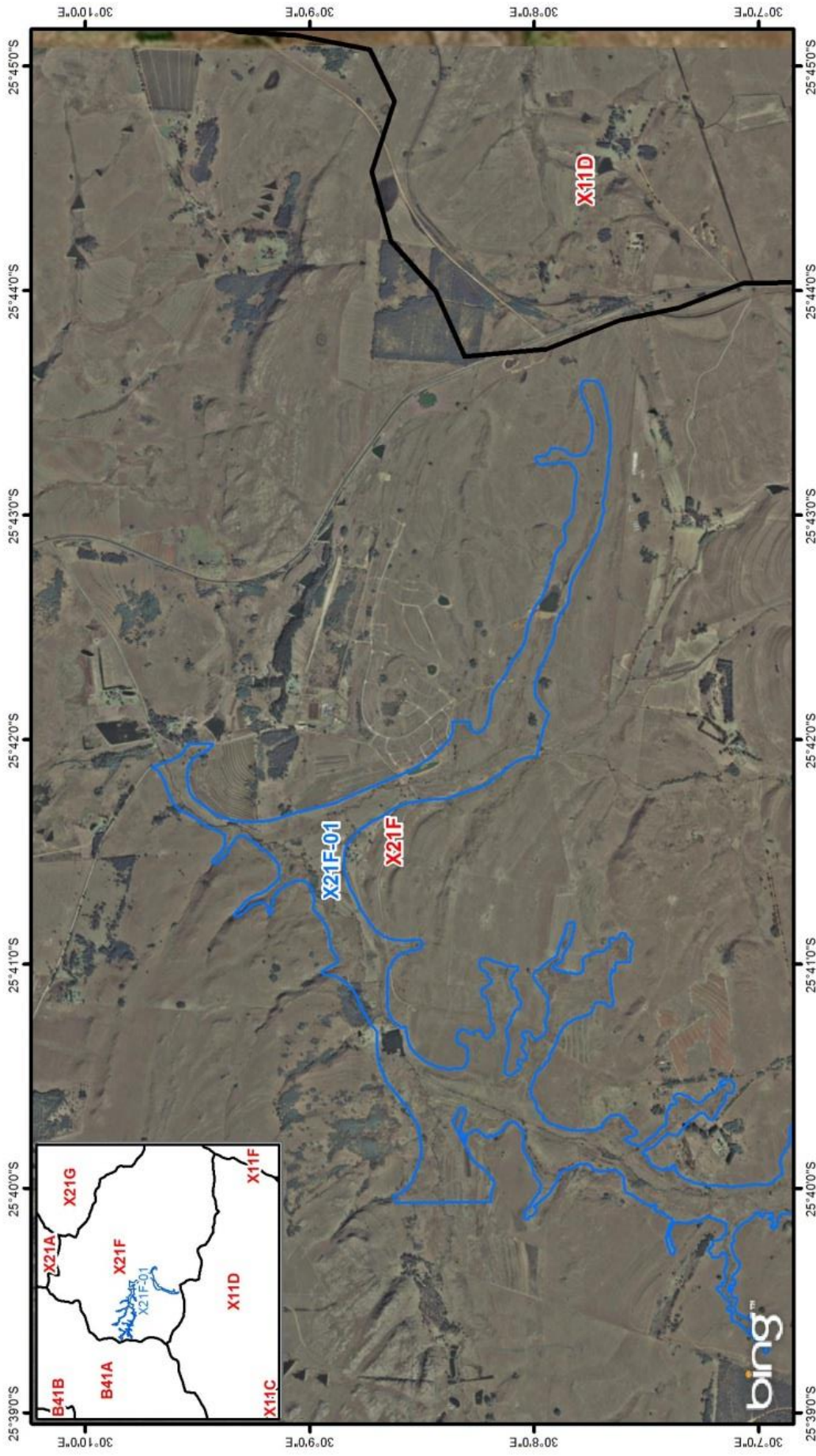
-  Quaternary Boundary
-  Wetlands




Co ordinate system : Geographic
Datum : WGS84

Mpumalanga - Lowveld - X31L-02 - Biv Matsavana - m01

1:50,000

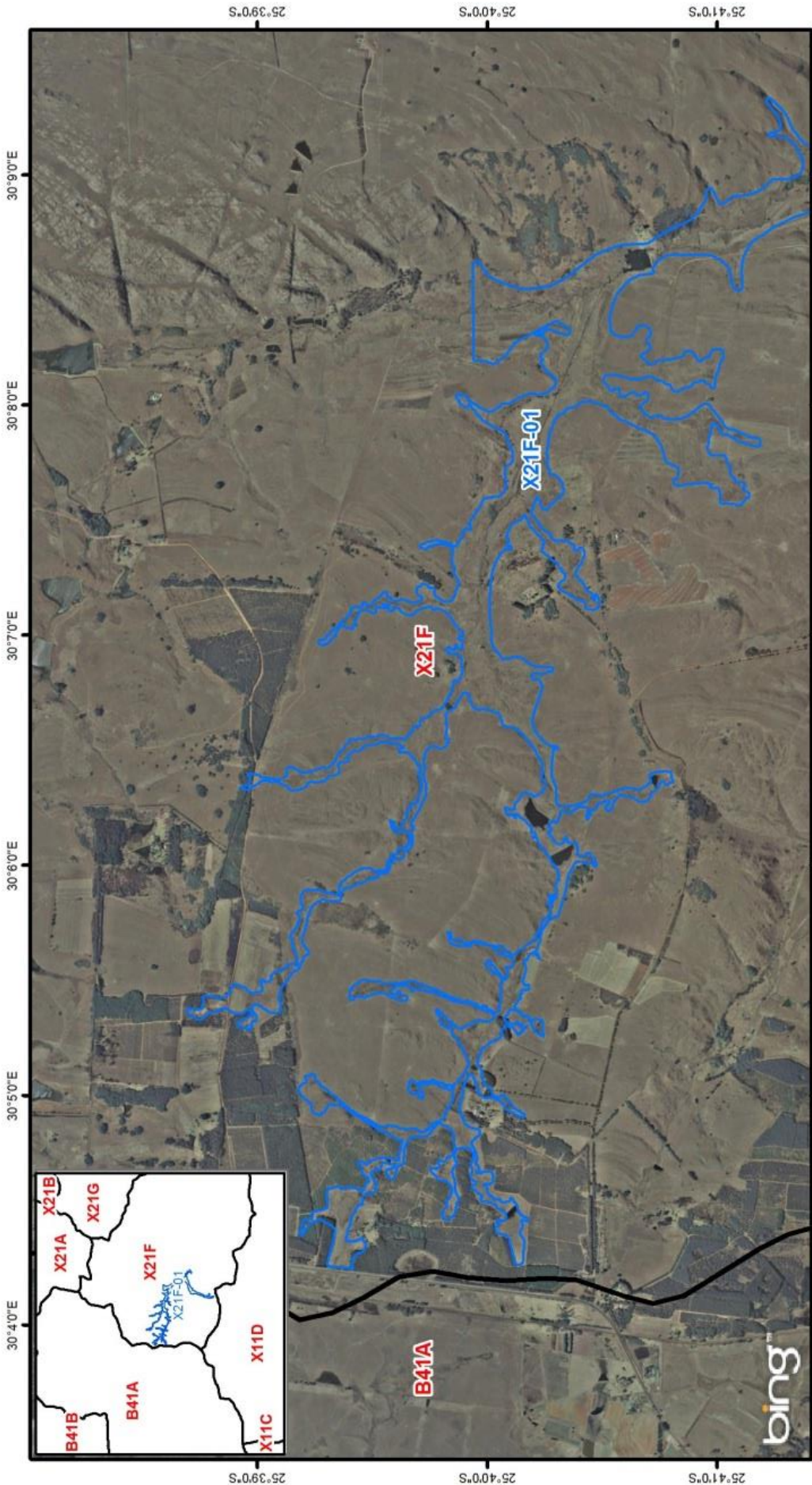


-  Quaternary Boundary
-  Wetlands

Co ordinate system : Geographic
Datum : WGS84

Mpumalanga - Inkomati - X21F-01 - Hartebeesspruit 01 - m01

1:60,000





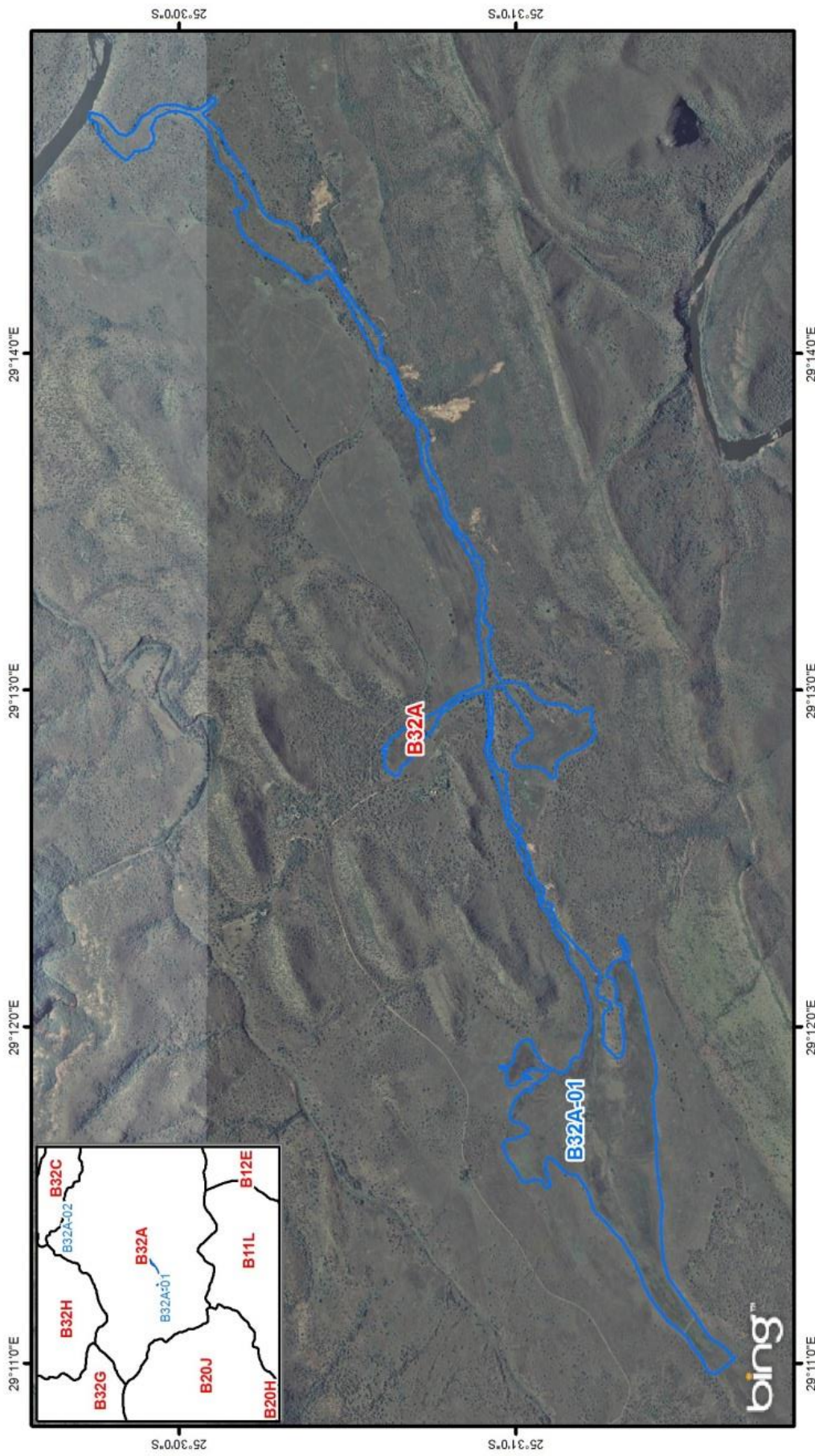




Co ordinate system : Geographic
 Datum : WGS84

Mpumalanga - Inkomati - X21F-01 - Hartebeesspruit 01 - m02

1:60,000

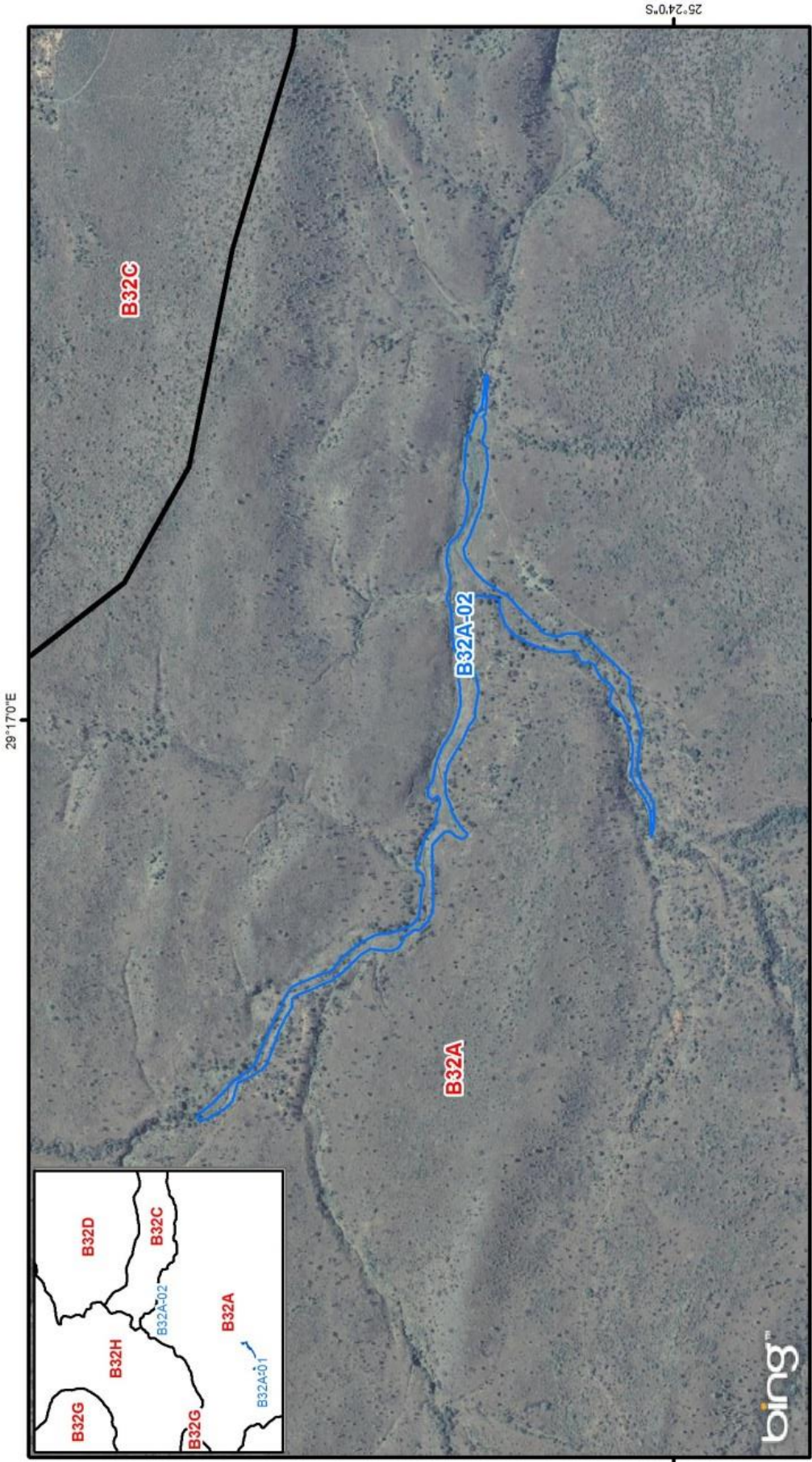


-  Quaternary Boundary
-  Wetlands



Co ordinate system : Geographic
 Datum : WGS84
 1:40,000

Mpumalanga - Steelpoort - B32A-01 - Hondekraal Wetland - m01



1:15,000

-  Quaternary Boundary
-  Wetlands

Co ordinate system : Geographic
Datum : WGS84

Mpumalanga - Steelpoort - B32A-02 - Parys Wetland - m01