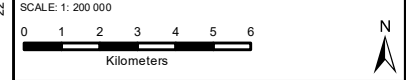
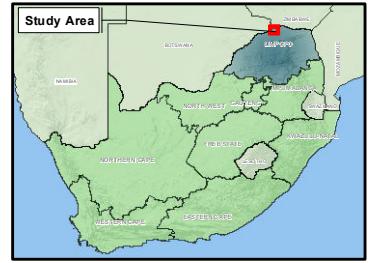


- ### Legend
- Venetia Mine
 - Lodge area
 - VLNR Lodge Access Road
 - Main Road
 - Secondary Road
 - Other Road
 - Perennial River
 - Non-Perennial River
 - Hydrological Areas
 - National Park
 - Venetia Limpopo Nature Reserve



TITLE:
VLNR Lodge Locality Map

CLIENT:
De Beers Consolidated Mines (Pty) Ltd

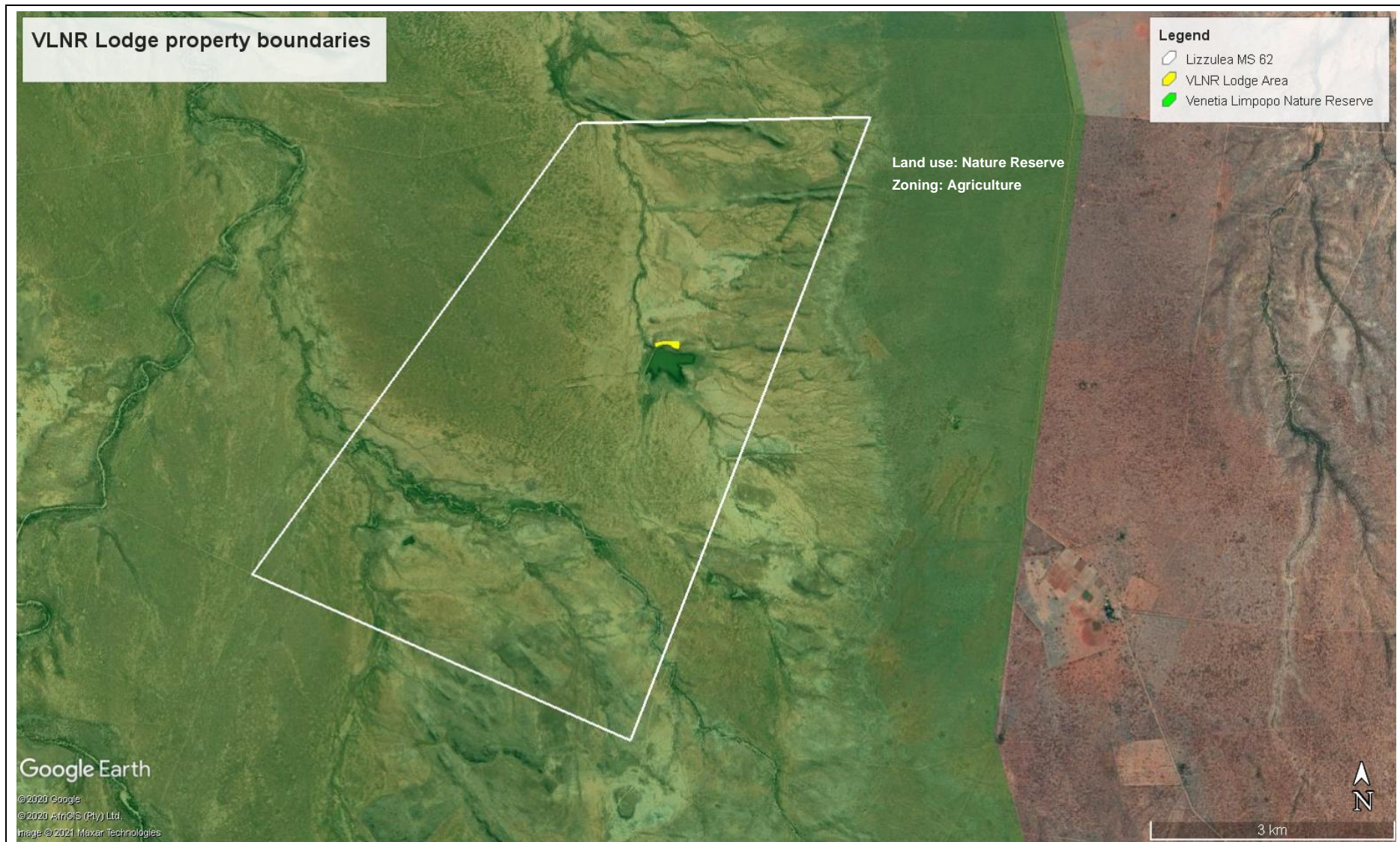
DATE: October 2020	PROJECT: VENETIA MINE
DRAWN: THURLLOW MAPPING	APPROVED: KP
MAP Venetia_Lodge_Locality_Map.mxd	REV: 0

Alta van Dyk Environmental Consultants cc (2011/059764/23)

VAT No: 4630259952
Tel: 012 940 9457
Fax: 086 634 3967
Cet: 061 403 2462

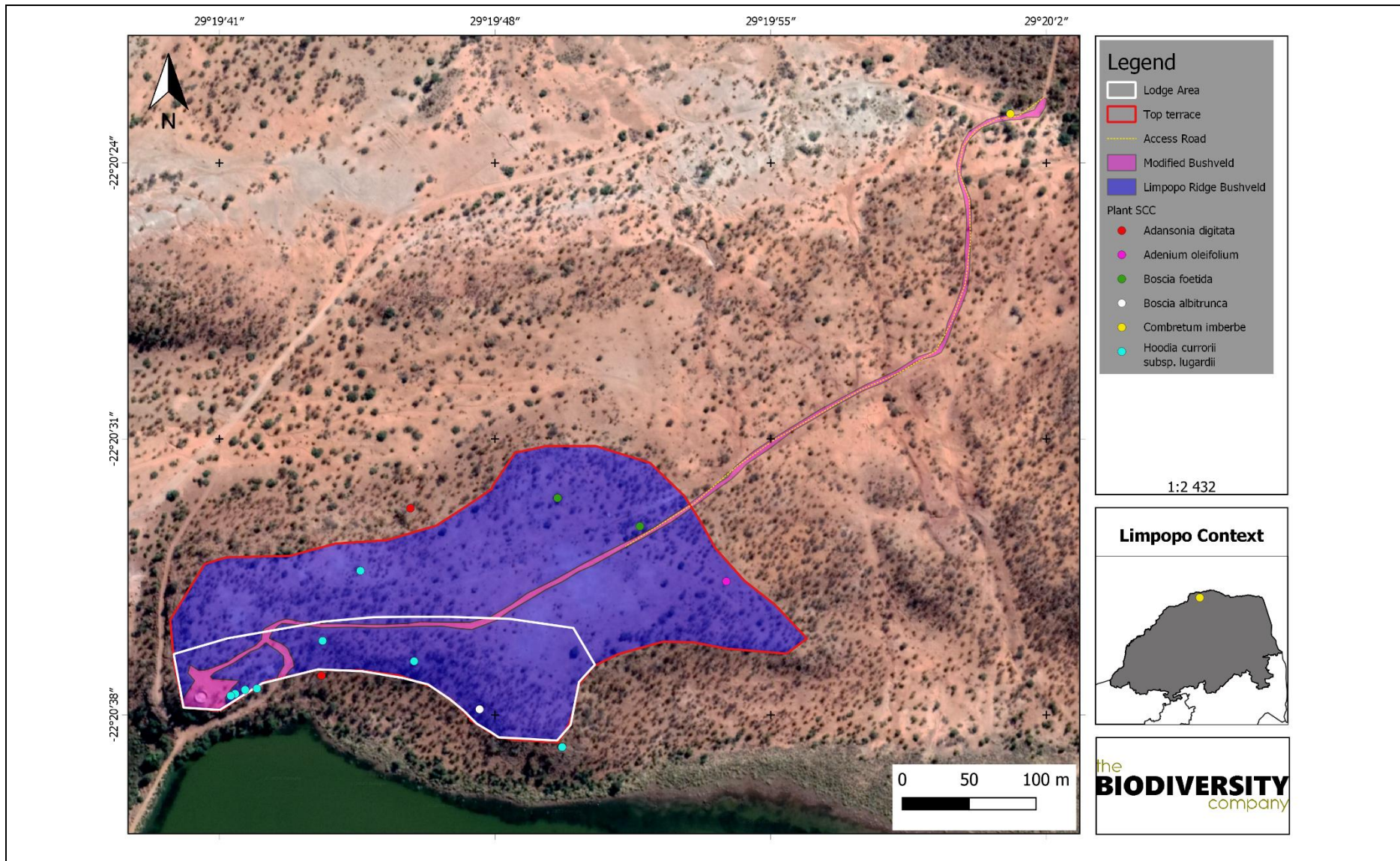
Projection: Transverse Mercator or CM: 29 Datum: WGS 84
Source: Chief Directorate National Geo-Spatial Information, DWA - NGA Geosites Inset: ESRI Data and Maps

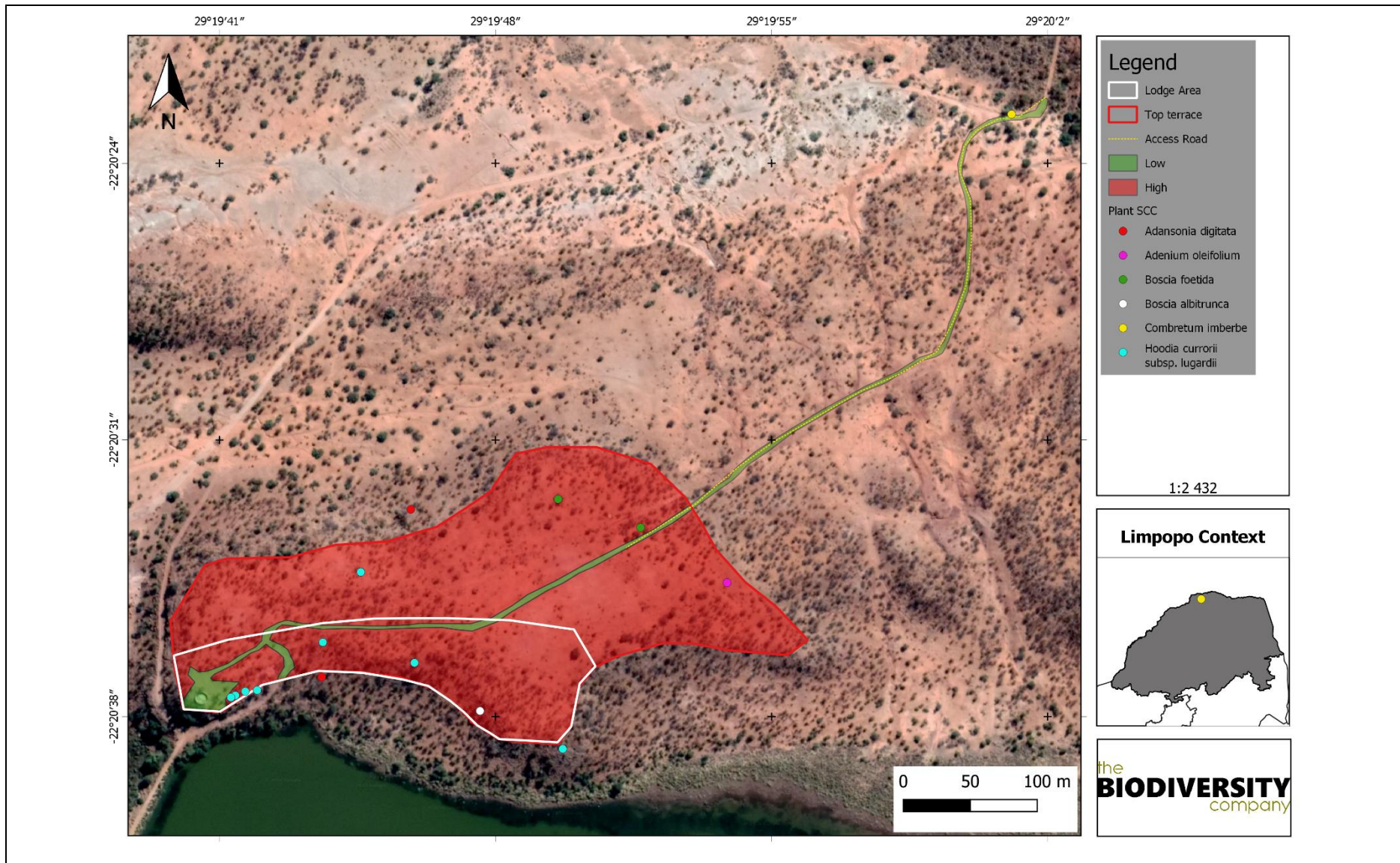
SIZE:
A4



VLNR Lodge
Property boundaries, land use and zoning

Figure 2







VLNR Lodge
1:100 Floodline (HEES, 2021 - Appendix D7)

Figure 5

