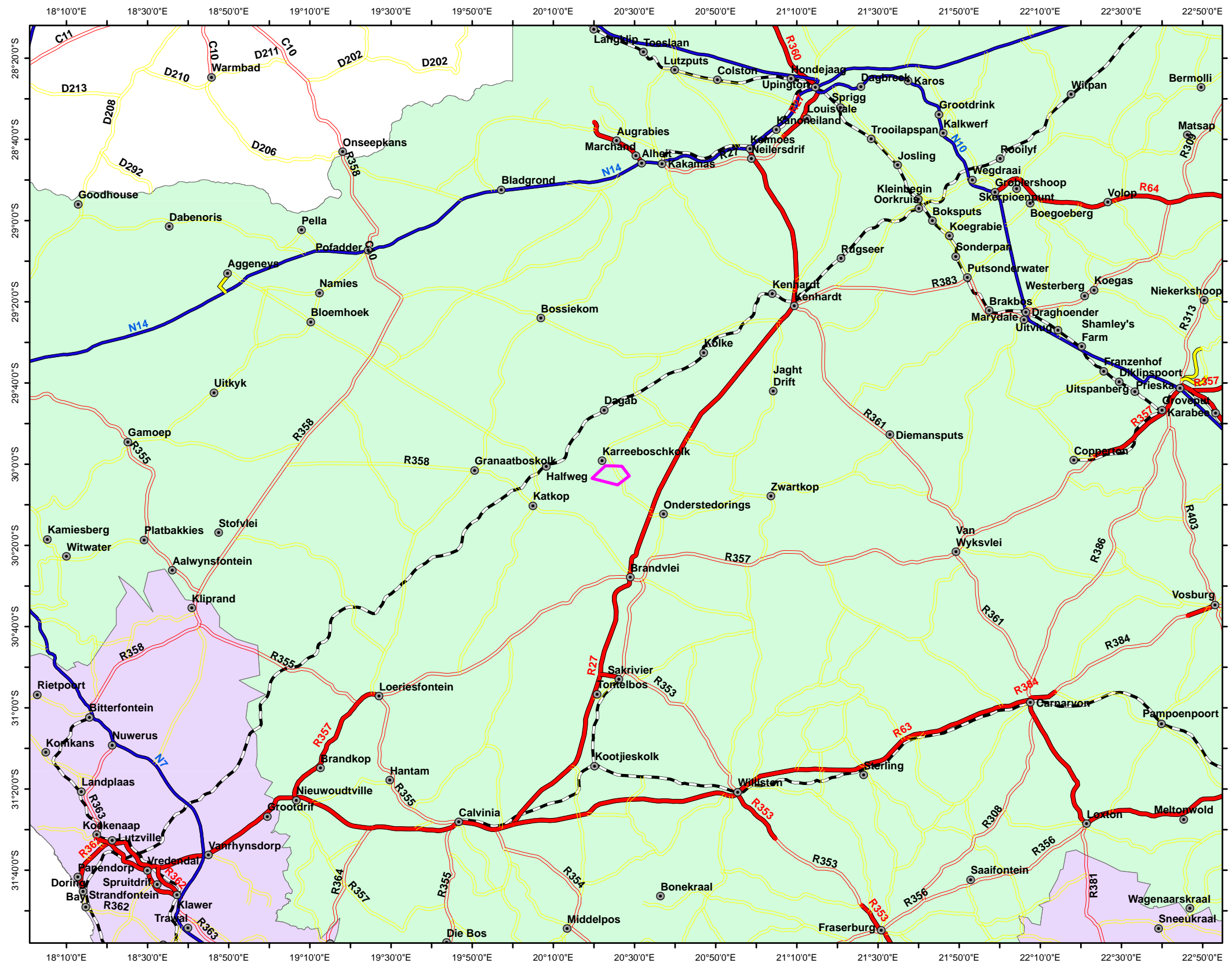
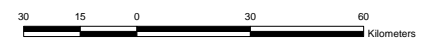


REGIONAL LOCATION OF VERDOORSTKOLK 342



LEGEND

- Towns
- ▭ Farm boundary VerdoorstKolk342
- Main tar
- Main untarred
- National
- Secondary tar
- Secondary untarred
- Railways
- Northern Cape
- Western Cape



Mama Swart
 M.Sc., Pr.Sci.Nat., Pr.GISc.
 GIS Professional PGP0041
 KookGIS
 Tel 083 456 3738
 Email:
 kookgis@gmail.com



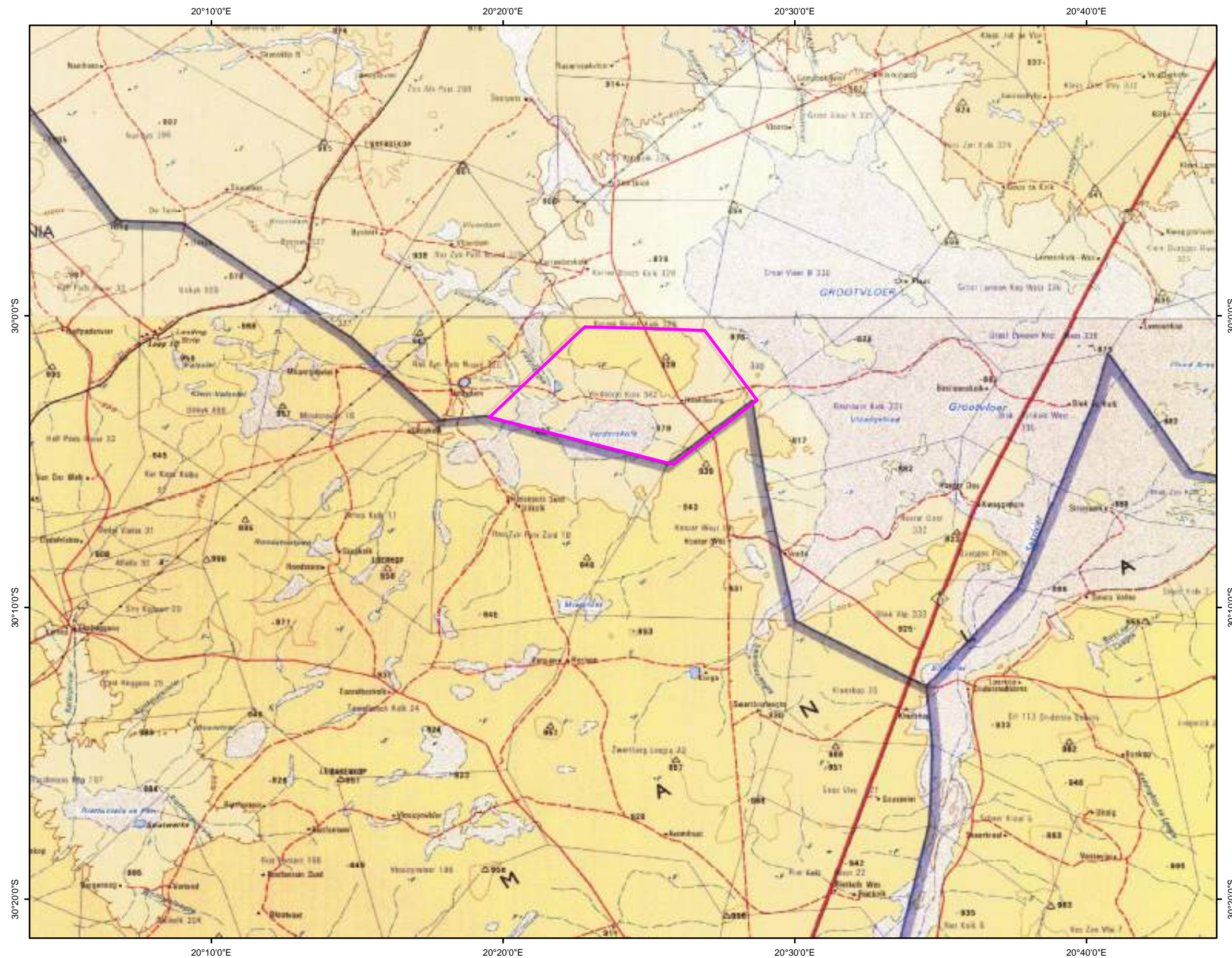
COORDINATE INFO:
 Datum: WGS84
 Spheroid: WGS84
 Projection: Decimal Degrees

Project:
 Brandvlei = VerdoorstKolk PRA
 Printed: 2017/11/28

File:
 G:\Projects\NorthernCape\Brandvlei\Verdoorst_Kolk342\MXD\
 Location_regional_201711228_FN.MXD

Figure - Regional location

LOCATION OF VERDOORSTKOLK342 ito NEIGHBOURS



LEGEND

Farm boundary VerdoorstKolk342

1:250 000 Topographical sheets
from NGI:
2920
3020



Mama Swart
M.Sc.; Pr.Sci.Nat.; Pr.GISc.
GIS Professional PGP0041
KookGIS
Tel 083 456 3738
Email:
kookgis@gmail.com



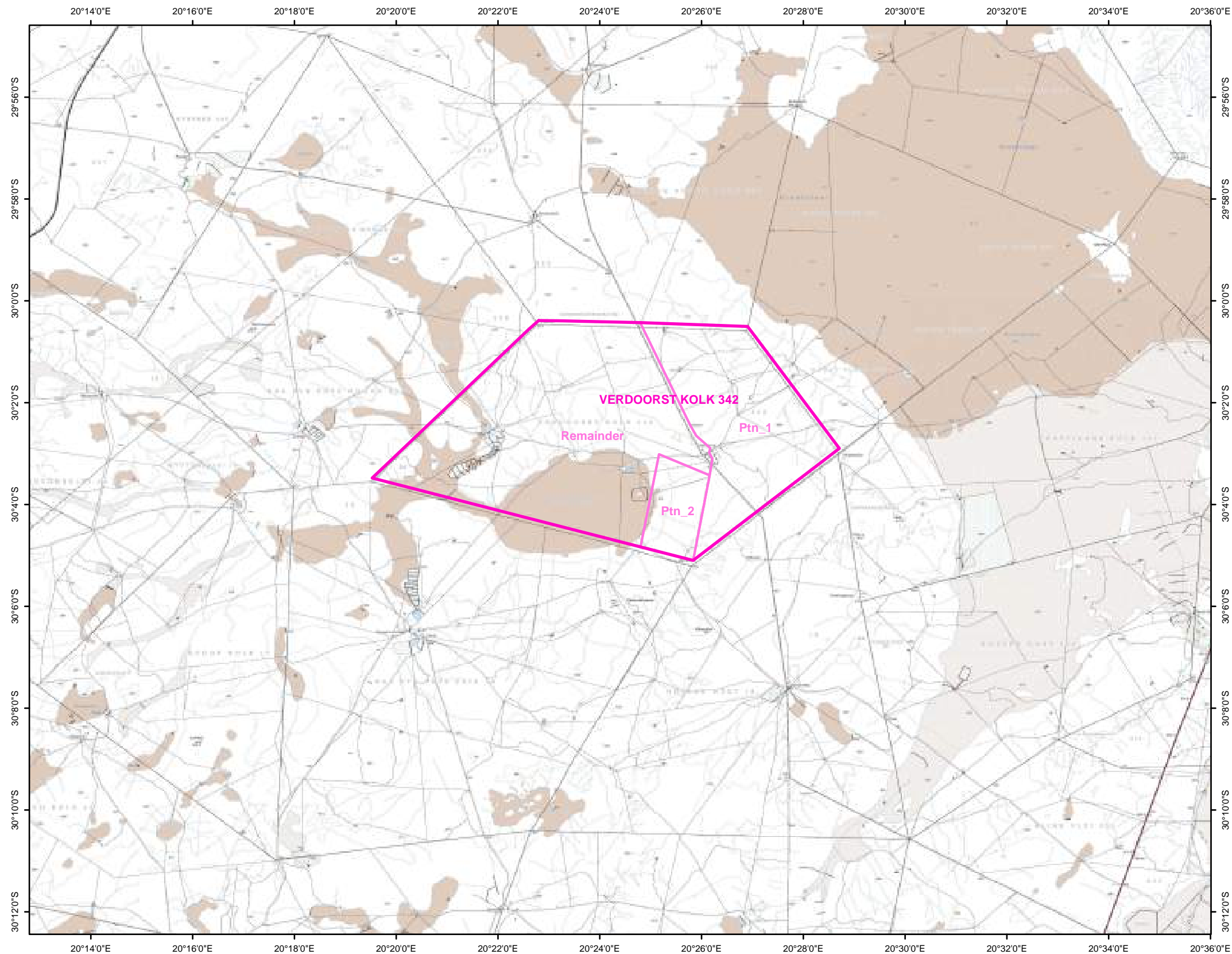
COORDINATE INFO:
Datum: WGS84
Stereoid: WGS84
Projection: Decimal Degrees

Project:
Brandvlei = VerdoorstKolk PRA
Printed: 2017/11/24

File:
G:\Projects\NorthernCape\Brandvlei\Verdoorst_Kolk342\MXD\
Location_local_20171124_n01_topo250k.mxd

Figure - Local location

LOCAL SETTING



LEGEND

- Farm boundary VerdoorstKolk342
- Farm Portions VerdoorstKolk342

1:50 000 Topographical sheets
from NGI:
2920CC
2920CD
2920DC
3020AA
3020AB
3020BA



Mama Swart
M.Sc.; Pr.Sci.Nat.; Pr.GISc.
GIS Professional PGP0041
KookGIS
Tel 083 456 3738
Email:
kookgis@gmail.com



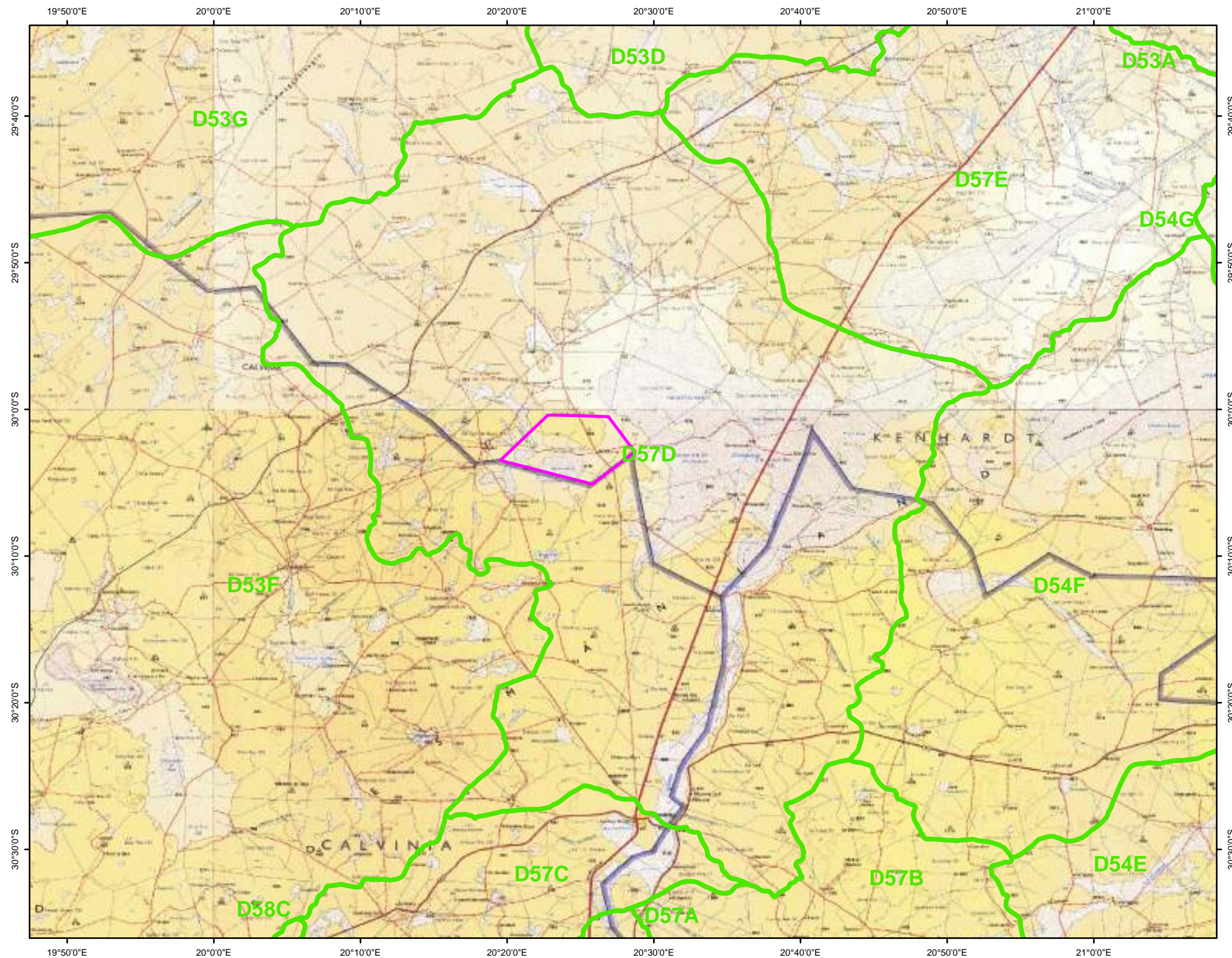
COORDINATE INFO:
Datum: WGS84
Spheroid: WGS84
Projection: Decimal Degrees

Project:
Brandvlei = VerdoorstKolk PRA
Printed: 2017/11/28



File:
G:\Projects\NorthernCape\Brandvlei\Verdoorst_Kolk342\MXD\
Location_local_20171128_FN_topo50k.mxd

Figure - Local Setting

QUATERNARY CATCHMENTS



LEGEND

-  Farm boundary VerdoorstKolk342
-  Quaternary catchments

VerdoorstKolk342 is inside
quaternary catchment D57D.
D57D = 444383,922ha

1:250 000 Topographical sheets
from NGI:
2918
2920
3018
3020



Mama Swart
M.Sc.; Pr.Sci.Nat.; Pr.GISc.
GIS Professional PGP0041
KookGIS
Tel 083 456 3738
Email:
kookgis@gmail.com



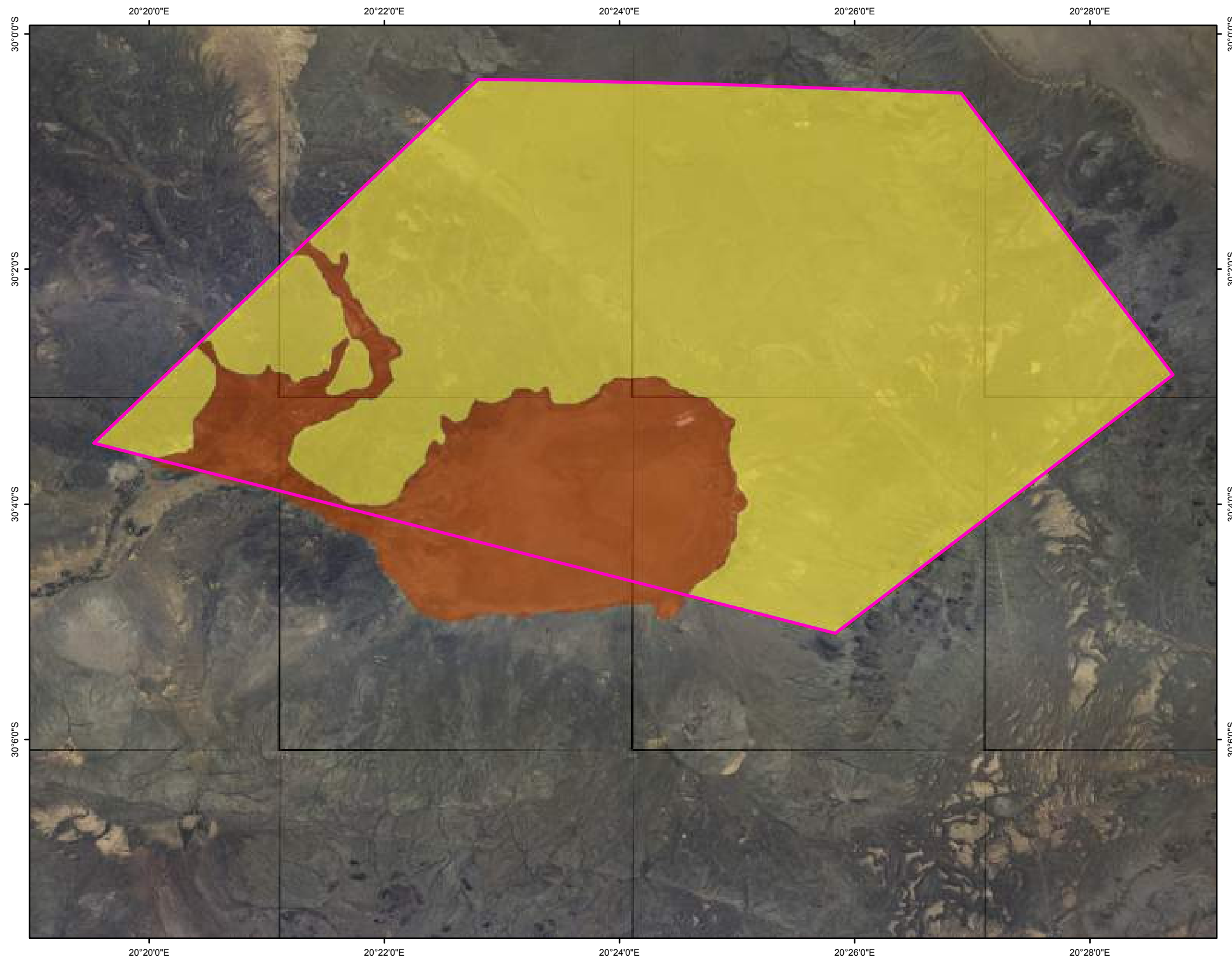
COORDINATE INFO:
Datum: WGS84
Stereoid: WGS84
Projection: Decimal Degrees

Project:
Brandvlei = VerdoorstKolk PRA
Printed: 2017/11/28

File:
G:\Projects\NorthernCape\Brandvlei\Verdoorst_Kolk342\MXD\
catchments_quaternary_topo250k_20171128_FN.mxd

Figure - Catchments

SOIL TYPES



LEGEND

Farm boundary VerdoorstKolk342

Name

Alkaline Saline - Sodic Soils

Mispah Soil Form – Orthic A (0-300mm)

1:10 000 Aerial Photos
from NGI taken 2014
3020AB no 1 - 15

Alkaline Saline – Sodic soils
Sample Results:
(Agricultural Research Council) ARC
% Clay Content - 70%
pH - 8.49
Na = 11800 mg/kg

Mispah Soil Form – Orthic a (0-300mm)
Soils with limited Pedological Development.
Shallow on hard or Weathering rock



Mama Swart
M.Sc.; Pr.Sci.Nat.; Pr.GISc.
GIS Professional PGP0041
KookGIS
Tel 083 456 3738
Email:
kookgis@gmail.com



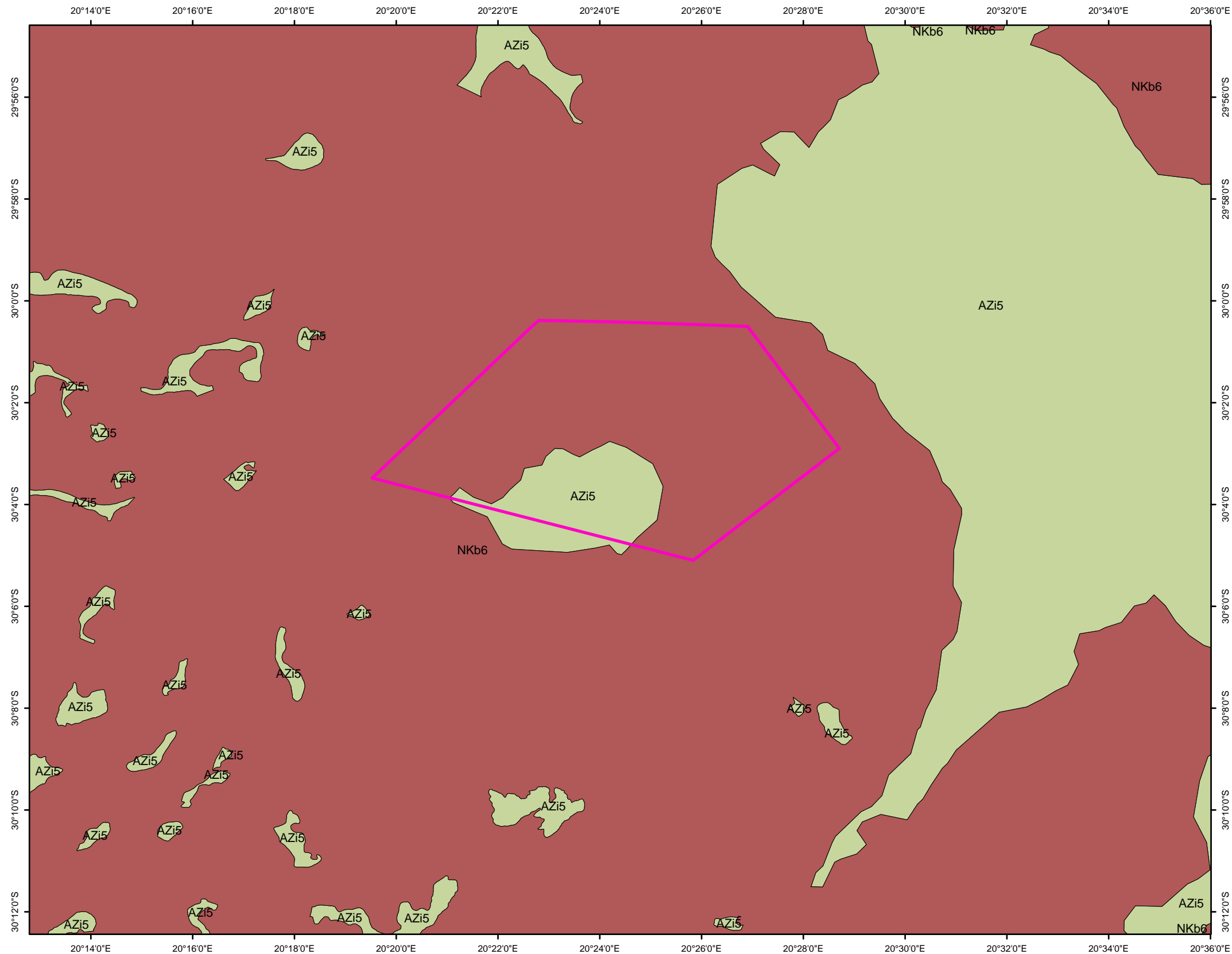
COORDINATE INFO:
Datum: WGS84
Spheroid: WGS84
Projection: Decimal Degrees

Project:
Brandvlei = VerdoorstKolk PRA
Printed: 2017/11/28

File:
G:\Projects\NorthernCape\Brandvlei\Verdoorst_Kolk342\MXD\
Soil_type_shelton-kmz_20171128_FN.mxd

Figure - Soil types

VEGETATION of Mucina & Rutherford (VEGMAP2012)



Legend

Farm boundary VerdoorstKolk342

Vegetation type - MAPCODE13

- NKb 6 Bushmanland Basin Shrubland
- AZi 5 Bushmanland Vloere

VEGMAP2012
Released 2017/07/06

MAPCODE12
Code for a vegetation type.
Types added in 2006
correspond with codes in
Mucina and Rutherford (2006).
Vegetation types added in
subsequent versions have been
assigned new codes.
Follows BiomeCode+BioregionCode+Sequence.



Marna Swart
M.Sc.; Pr.Sci.Nat.; Pr.GISc.
GIS Professional PGP0041
KookGIS
Tel 083 456 3738
Email:
kookgis@gmail.com



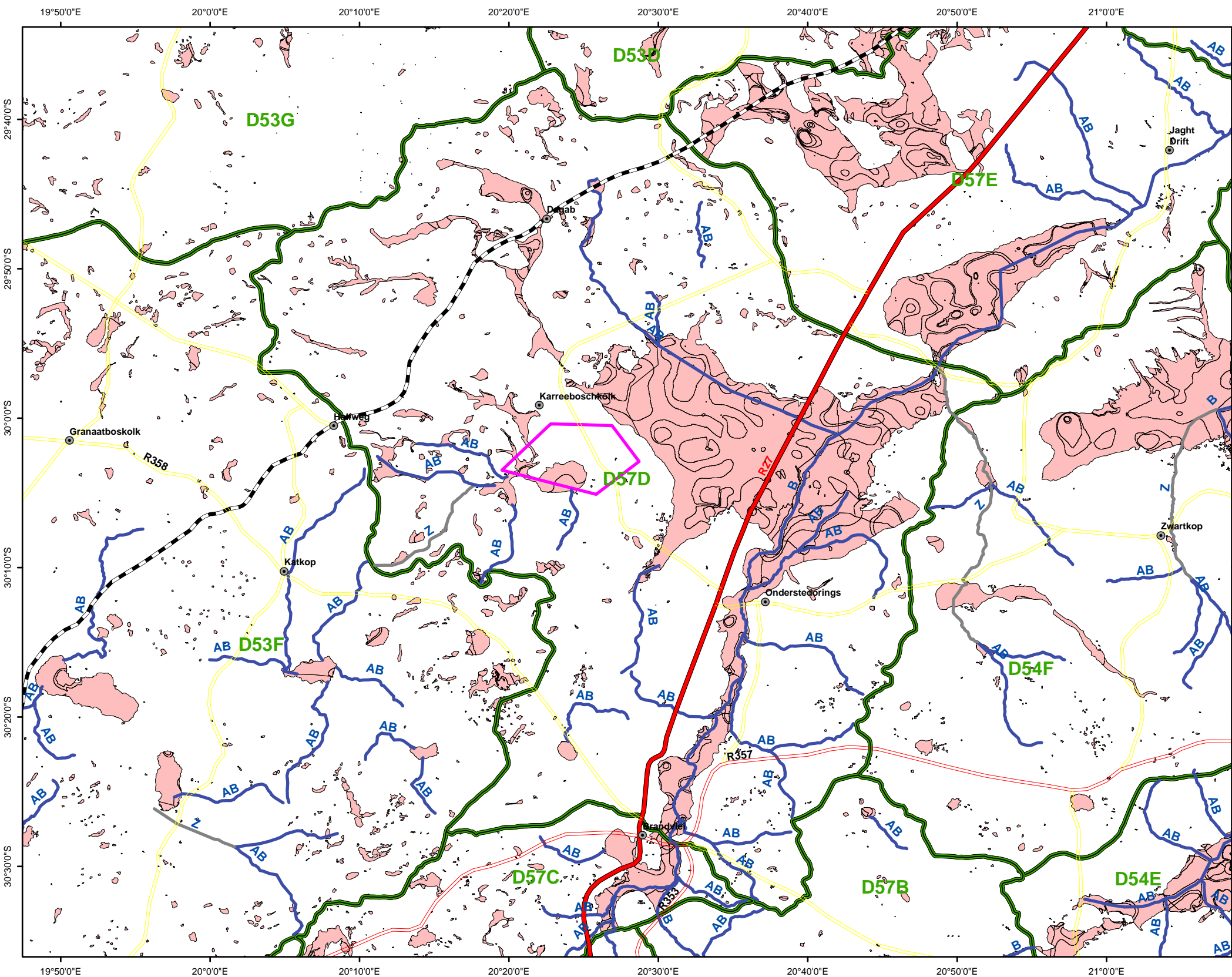
COORDINATE INFO:
Datum: WGS84
Spheroid: WGS84
Projection: Decimal Degrees

Project:
Brandvlei = VerdoorstKolk PRA
Printed: 2017/11/28

File:
G:\Projects\NorthernCape\Brandvlei\Verdoorst_Kolk342\MXD\
Vegetation_VegMap2012_SANBI_20171128_FN.mxd

Figure - Vegetation

WETLANDS VEGETATION GROUP & RIVER CONDITIONS OF THE NATIONAL FRESHWATER ECOSYSTEMS PRIORITY AREAS PROJECT (NFEPA)

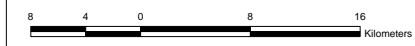


LEGEND

- Towns
- Main tar
- Main untarred
- Secondary untarred
- Railways
- River Condition - NFEPA**
- A; AB; B 73 River segments in quaternary catchment: AB = 57
- C B = 11
- D Z = 5
- E; EF
- Z
- Foreign
- ▭ Farm boundary VerdoorstKolk342
- ▭ Quaternary catchments
- VegetationGroup - WETVEGGRP**
- ▭ Nama Karoo Bushmanland
- ▭ Upper Nama Karoo

No NEFA Flagship rivers in D57D catchment.

River condition used by NFEPA:
 A = Unmodified, Natural
 B = Largely Natural With Few Modifications
 AB = A or B Above
 A or B is considered intact and able to contribute towards river ecosystem biodiversity targets.
 C = Moderately Modified
 D = Largely Modified
 E = Seriously Modified
 F = Critically/Extremely Modified
 EF = E or F Above
 Z = Tributary Condition Modelled
 As not intact, according to natural Land Cover



Marna Swart
 M.Sc., Pr.Sci.Nat., Pr.GISc.
 GIS Professional PGP0041
 KookGIS
 Tel 083 456 3738
 Email: kookgis@gmail.com



COORDINATE INFO:
 Datum: WGS84
 Stereoid: WGS84
 Projection: Decimal Degrees

Project:
 Brandvlei = VerdoorstKolk PRA
 Printed: 2017/11/28

File:
 G:\Projects\NorthernCape\Brandvlei\Verdoorst_Kolk342\MXD\ rivers_wetlands_nepa_20171128_FN_river-conditions_wetlandveggroup.MXD

Figure - Wetlands & Rivers (NFEPA)