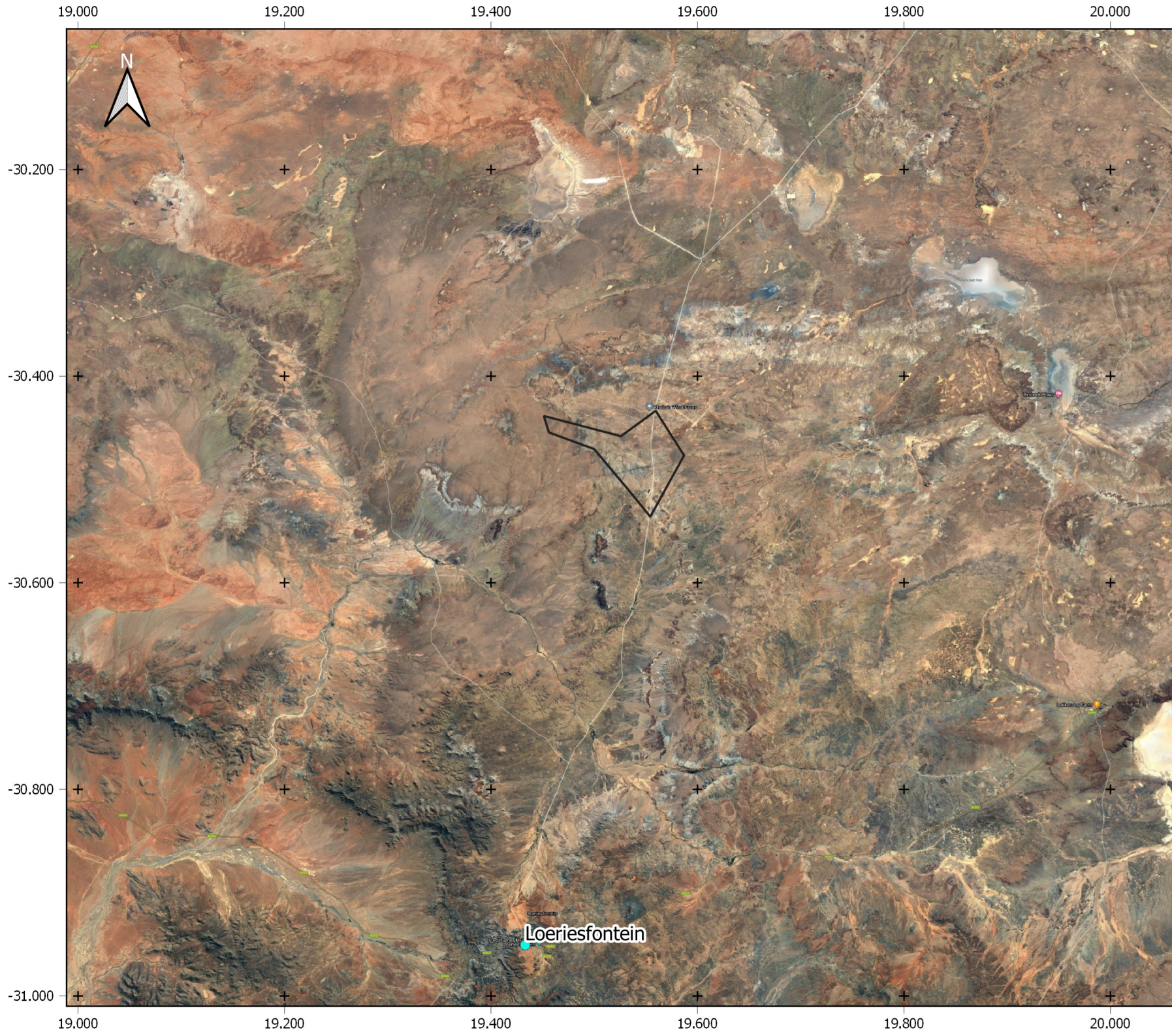


Mobile: Sam - 072 437 1742
Mobile: Luke - 083 784 1997
Email: info@enviro-insight.co.za
Website: www.enviro-insight.co.za


Appendix A:

Preliminary Mapping





Legend

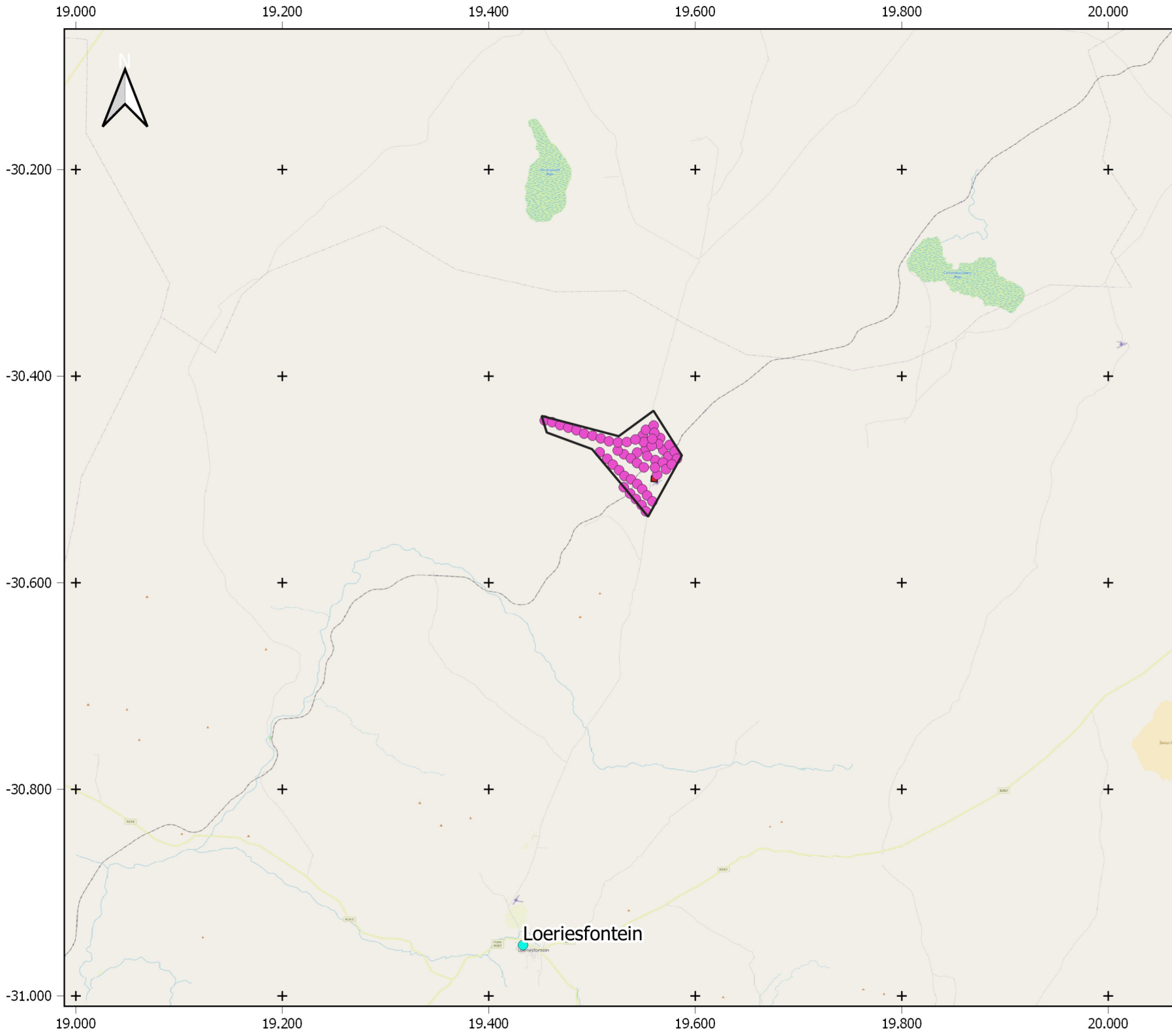
 Study area

0 5 10 15 km

1:350 000

National Context



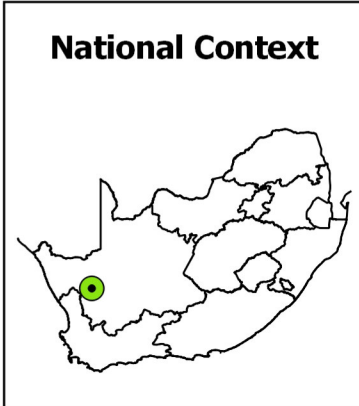


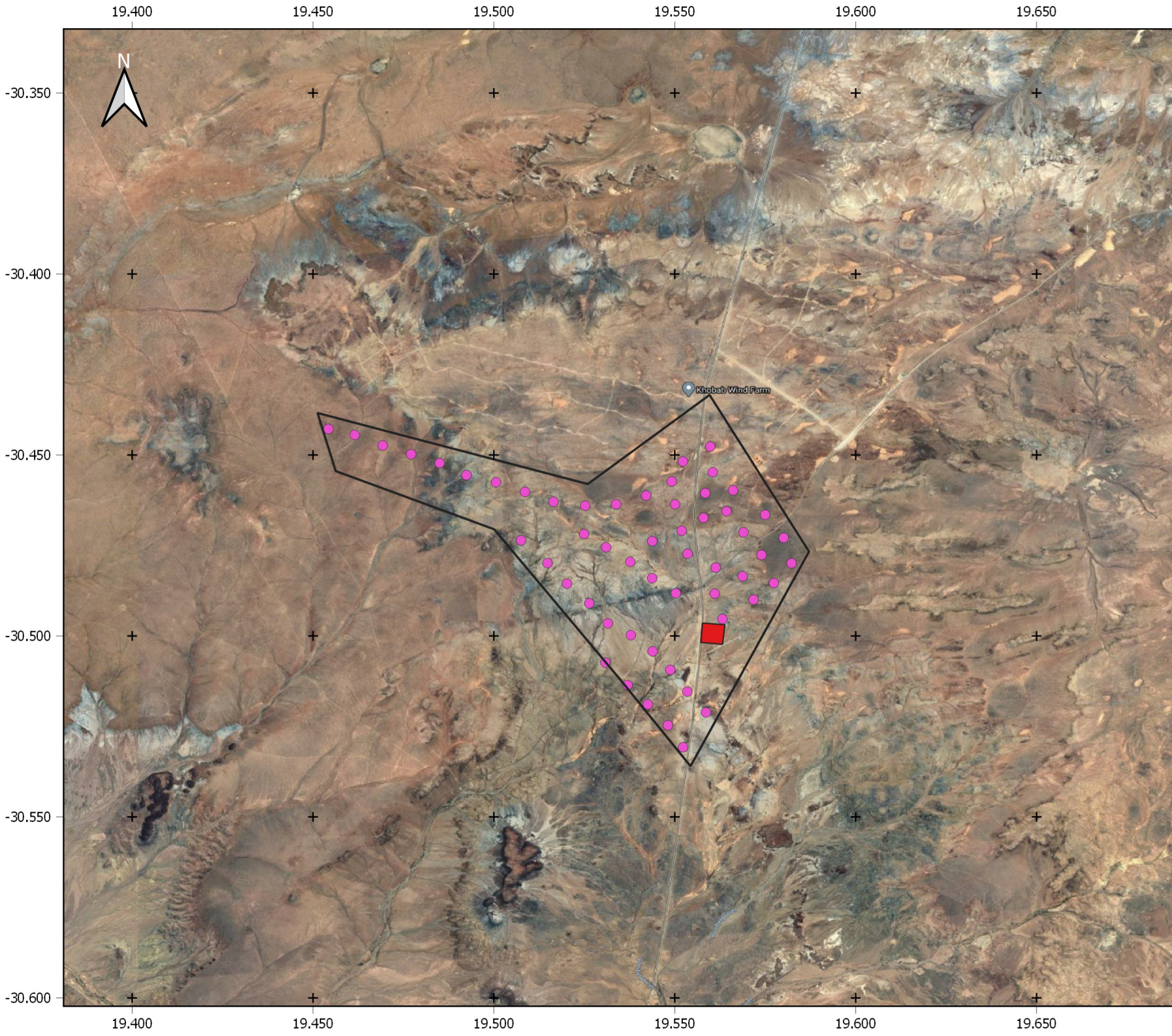
Legend

- Study area
- Proposed Turbine layout

0 5 10 15 km

1:350 000





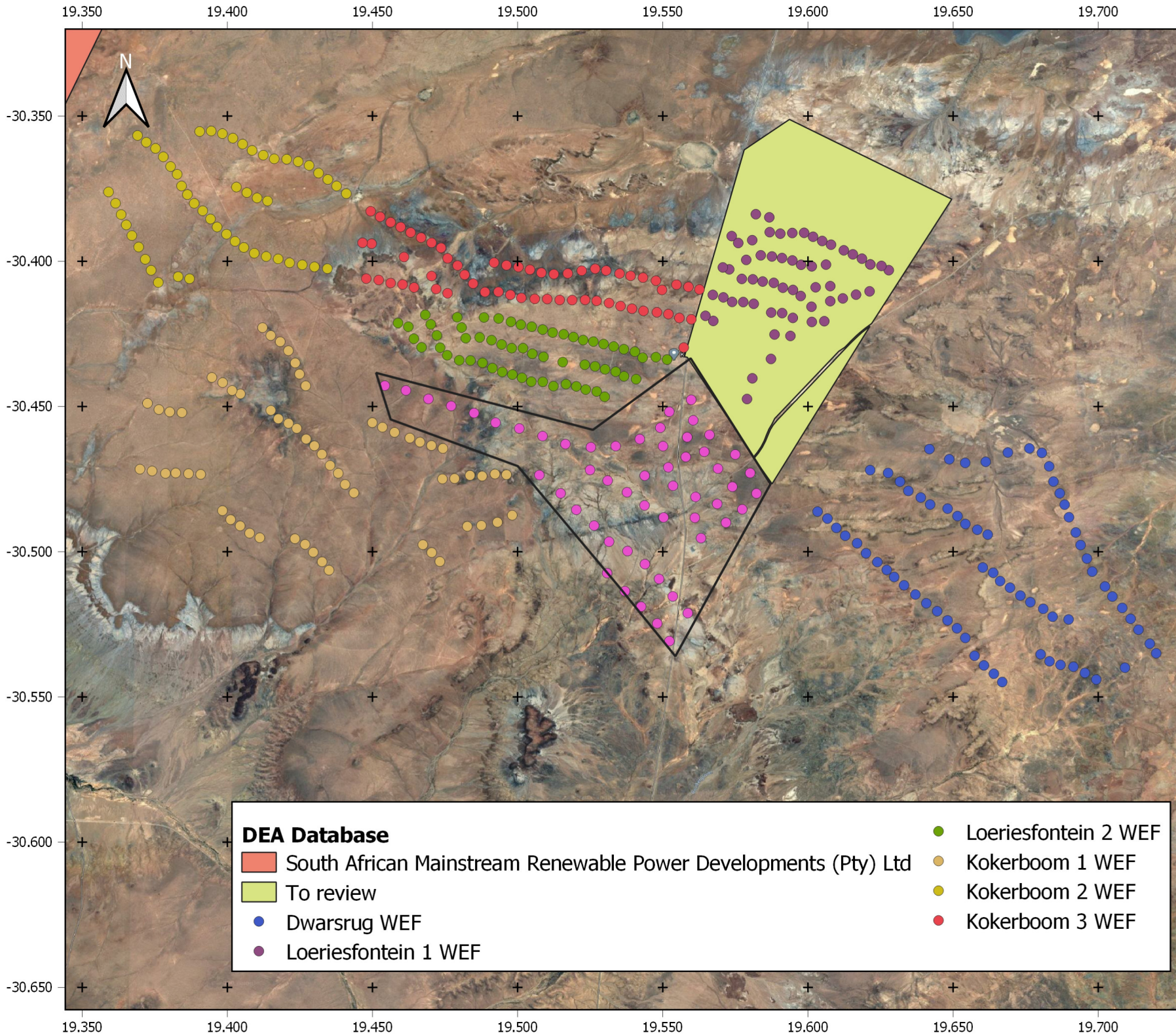
Legend

- Study area
- Proposed Turbine layout
- Helios substation

0 1 2 3 4 km

1:100 000

National Context



Legend

- Study area
- Proposed Turbine layout

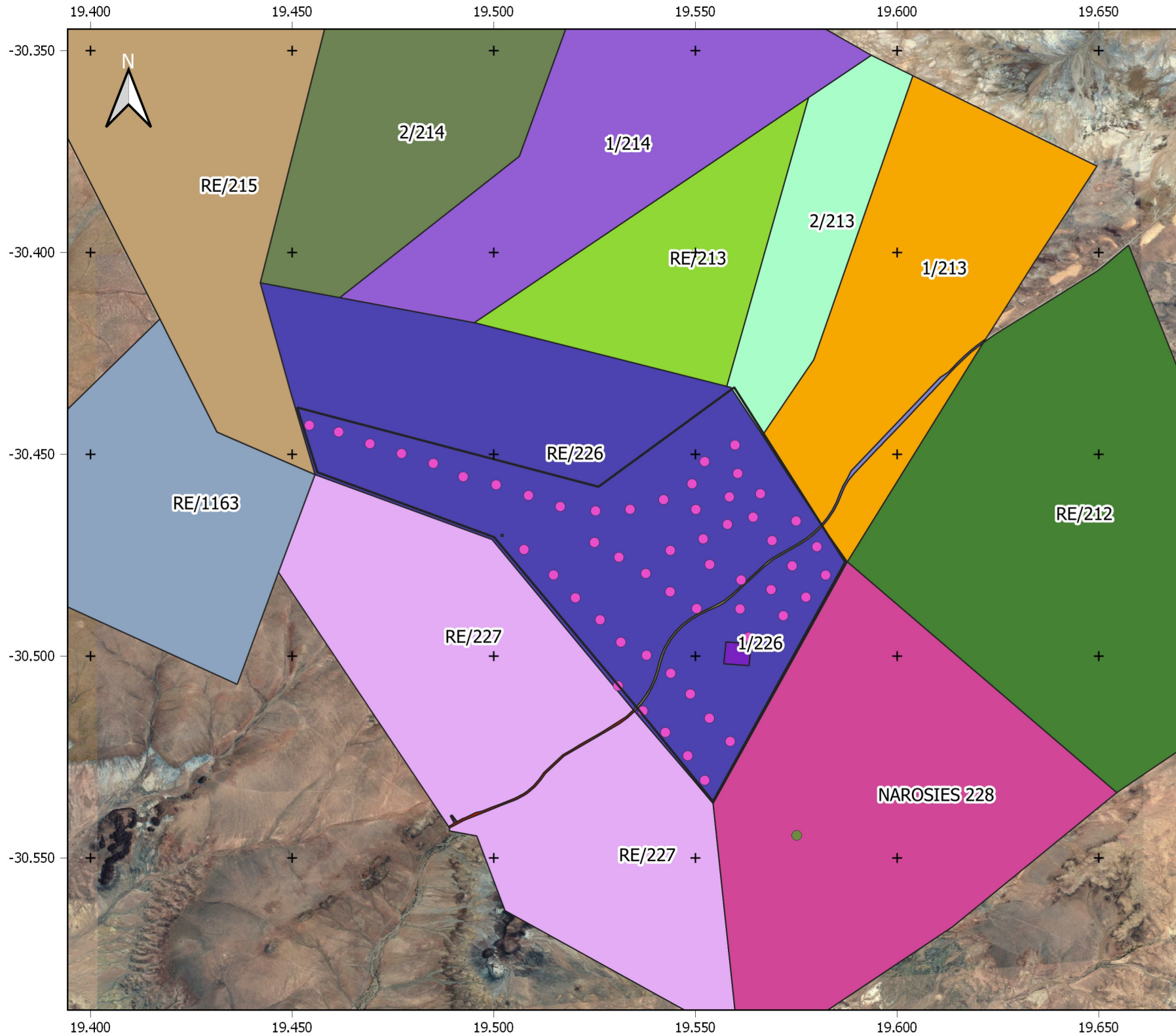
0 1 2 3 4 5 km

1:125 000

National Context

DEA Database

<ul style="list-style-type: none"> South African Mainstream Renewable Power Developments (Pty) Ltd To review ● Dwarsrug WEF ● Loeriesfontein 1 WEF 	<ul style="list-style-type: none"> ● Loeriesfontein 2 WEF ● Kokerboom 1 WEF ● Kokerboom 2 WEF ● Kokerboom 3 WEF
--	---



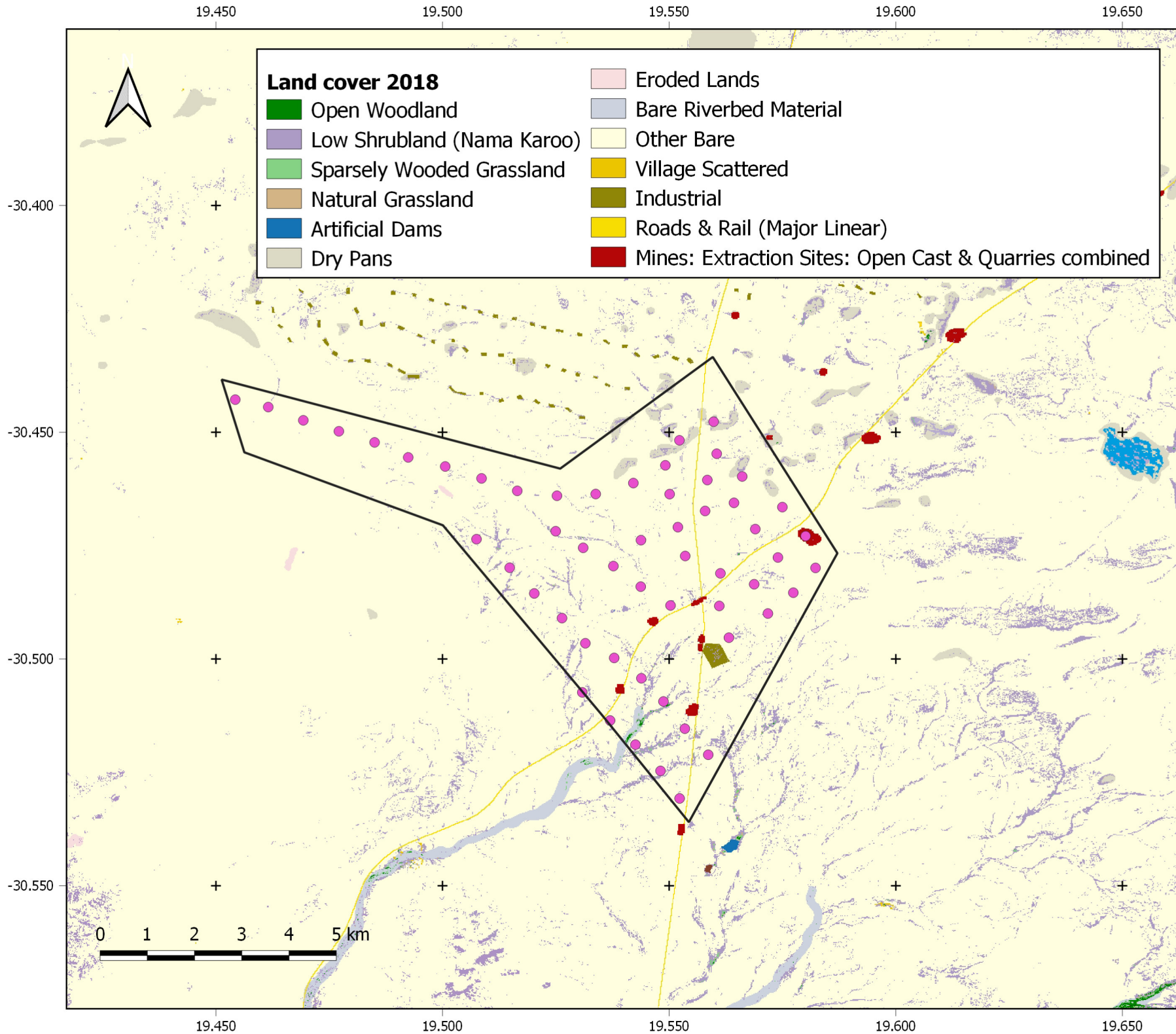
Legend

- Study area
- Proposed Turbine layout

0 1 2 3 4 km

1:90 010

National Context



Land cover 2018

- Open Woodland
- Low Shrubland (Nama Karoo)
- Sparsely Wooded Grassland
- Natural Grassland
- Artificial Dams
- Dry Pans
- Eroded Lands
- Bare Riverbed Material
- Other Bare
- Village Scattered
- Industrial
- Roads & Rail (Major Linear)
- Mines: Extraction Sites: Open Cast & Quarries combined

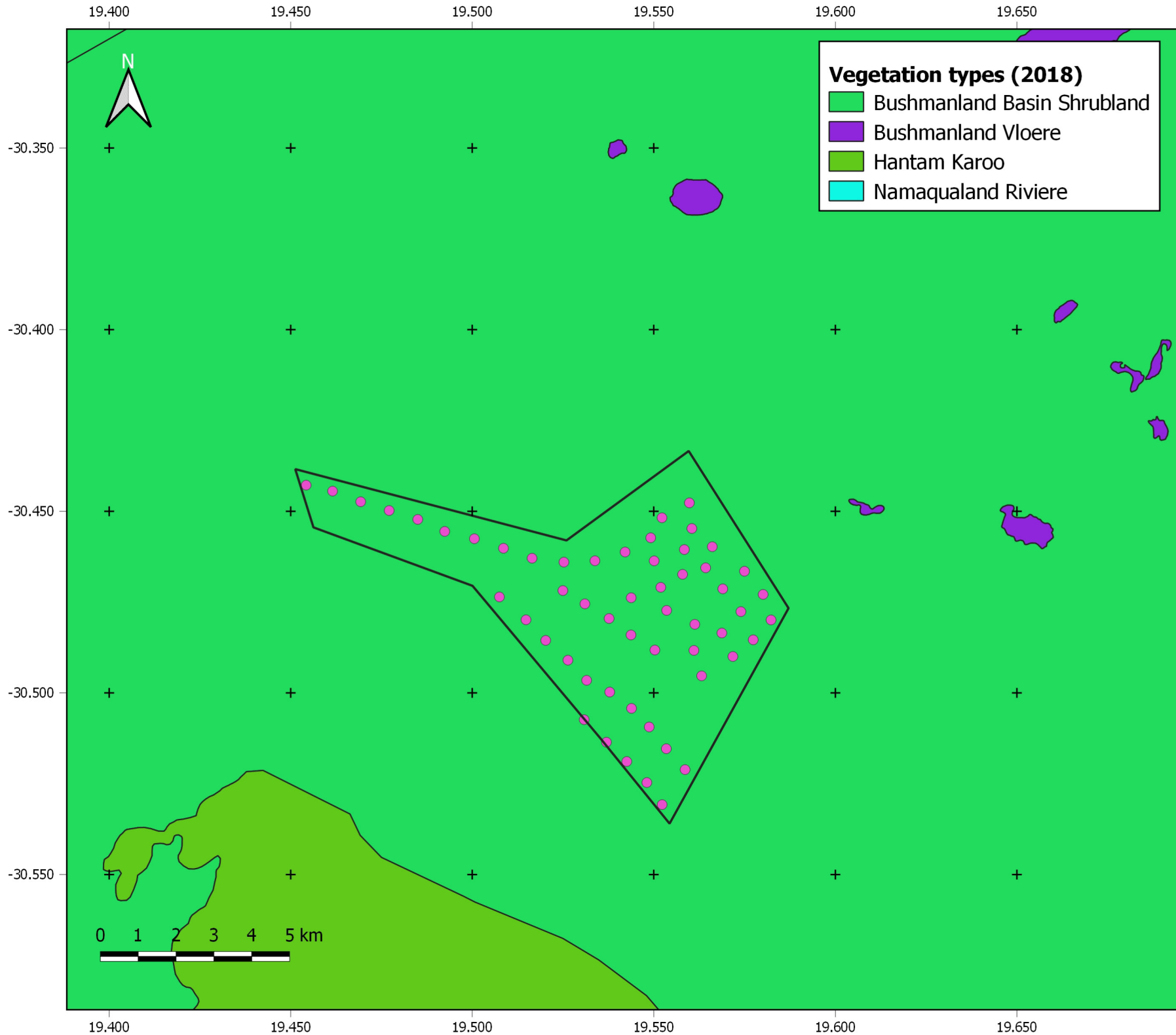
Legend

- Study area
- Proposed Turbine layout

1:80 000

National Context





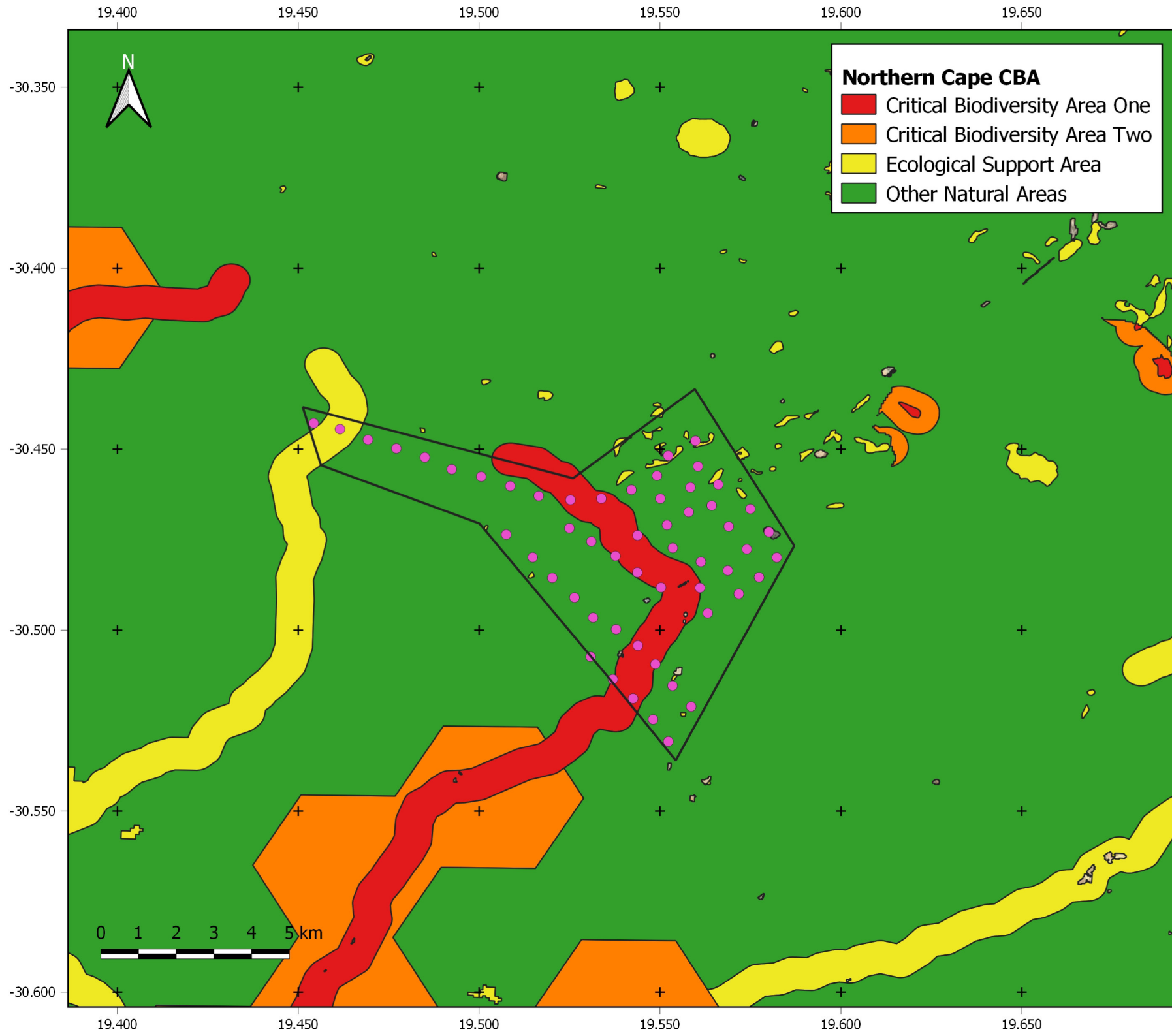
Legend

- Study area
- Proposed Turbine layout

1:100 000

National Context

EnviroINSIGHT
environmental impact assessments



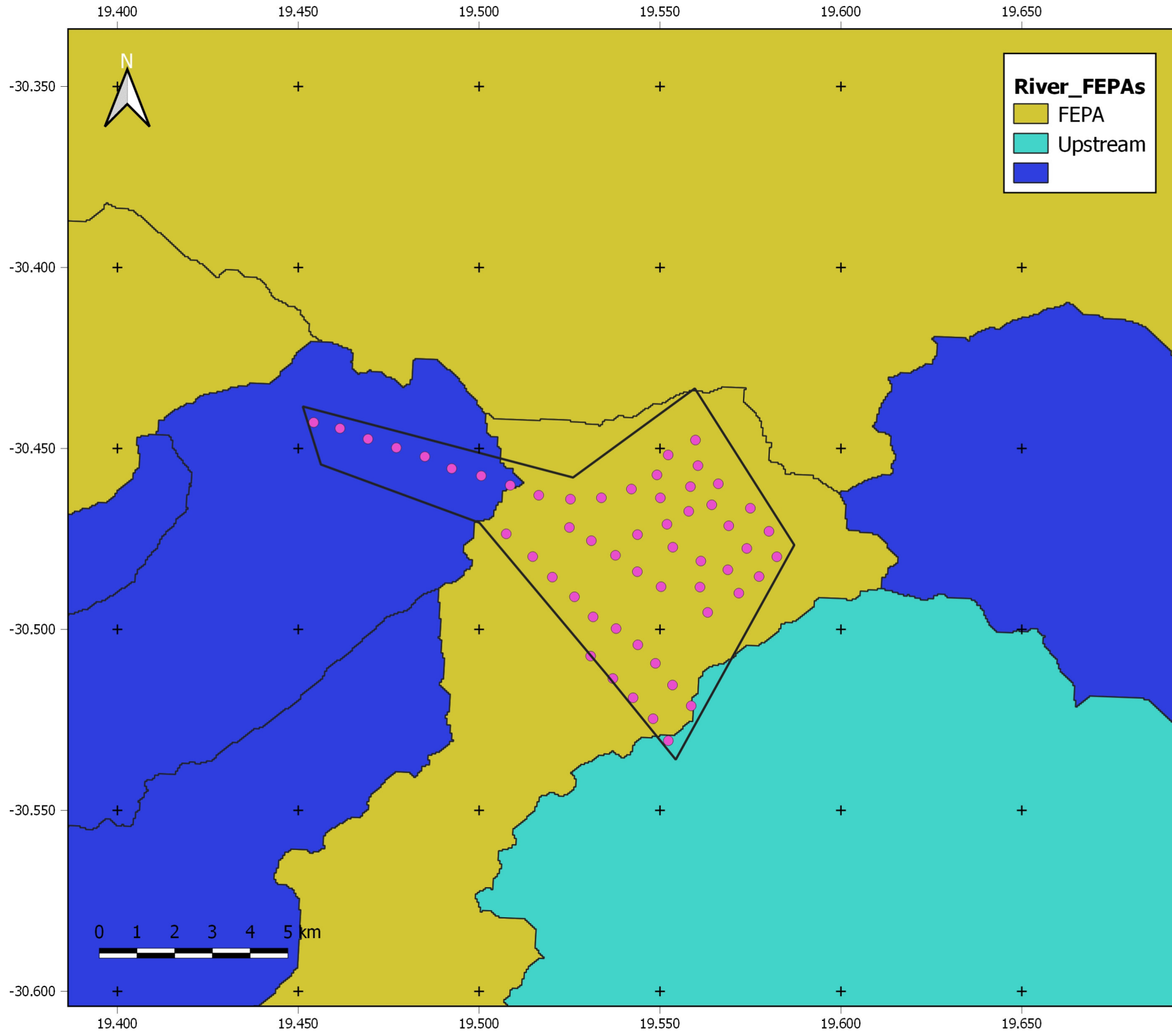
Legend

- Study area
- Proposed Turbine layout

1:100 000

National Context

EnviroINSIGHT
environmental impact assessments



River_FEPAs

- FEPA
- Upstream
-

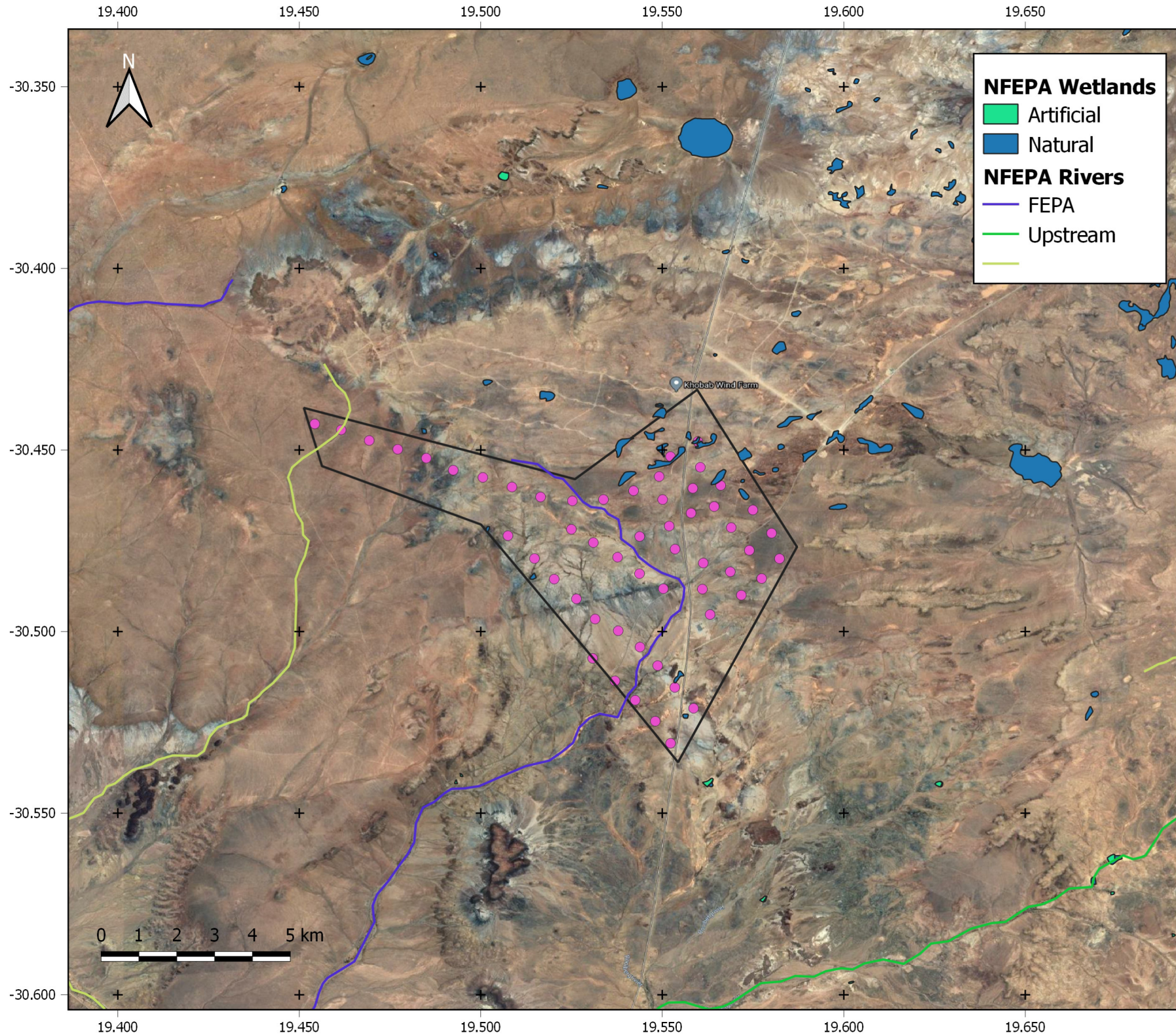
Legend

- Study area
- Proposed Turbine layout

1:100 000

National Context

Enviro INSIGHT
environmental impact assessments



NFEPA Wetlands

- Artificial
- Natural

NFEPA Rivers

- FEPA
- Upstream

Legend

- Study area
- Proposed Turbine layout

1:100 000

National Context

