









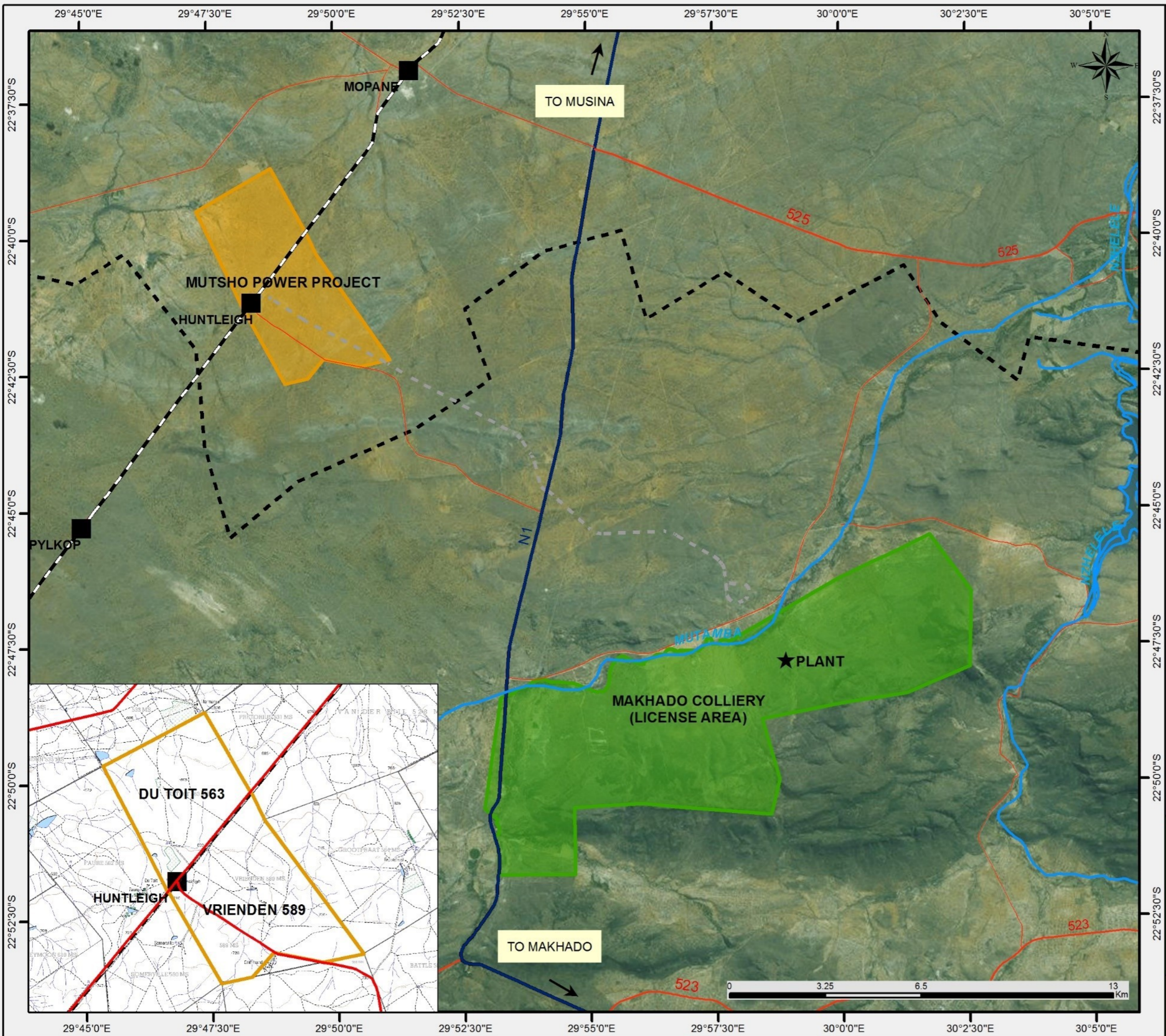


Mutsho Power Project Locality Map

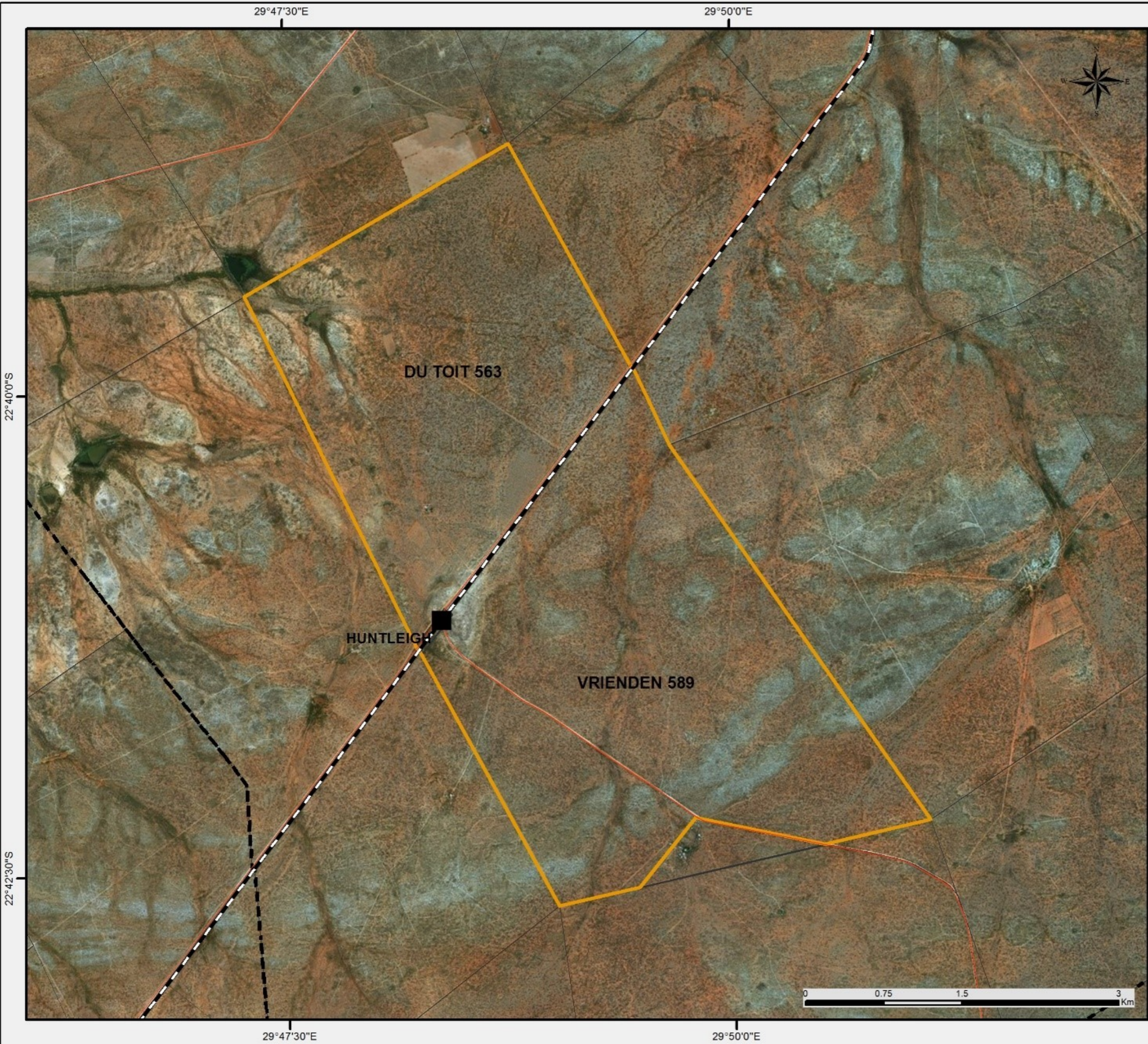
Legend:

-  Mutsho Power Project
 -  Makhado Colliery
 -  Plant
 -  Municipal Boundary
 -  Railway Station
 -  Railway Line
 -  Proposed Rail Loop
- Roads**
-  National Route
 -  Main Road
 -  Secondary Road




Scale: 1:175 000
 Projection: LO31_WGS 1984
 Map Ref.: Locality Map - 19.07.2017



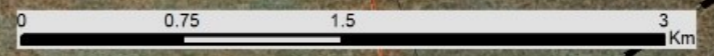


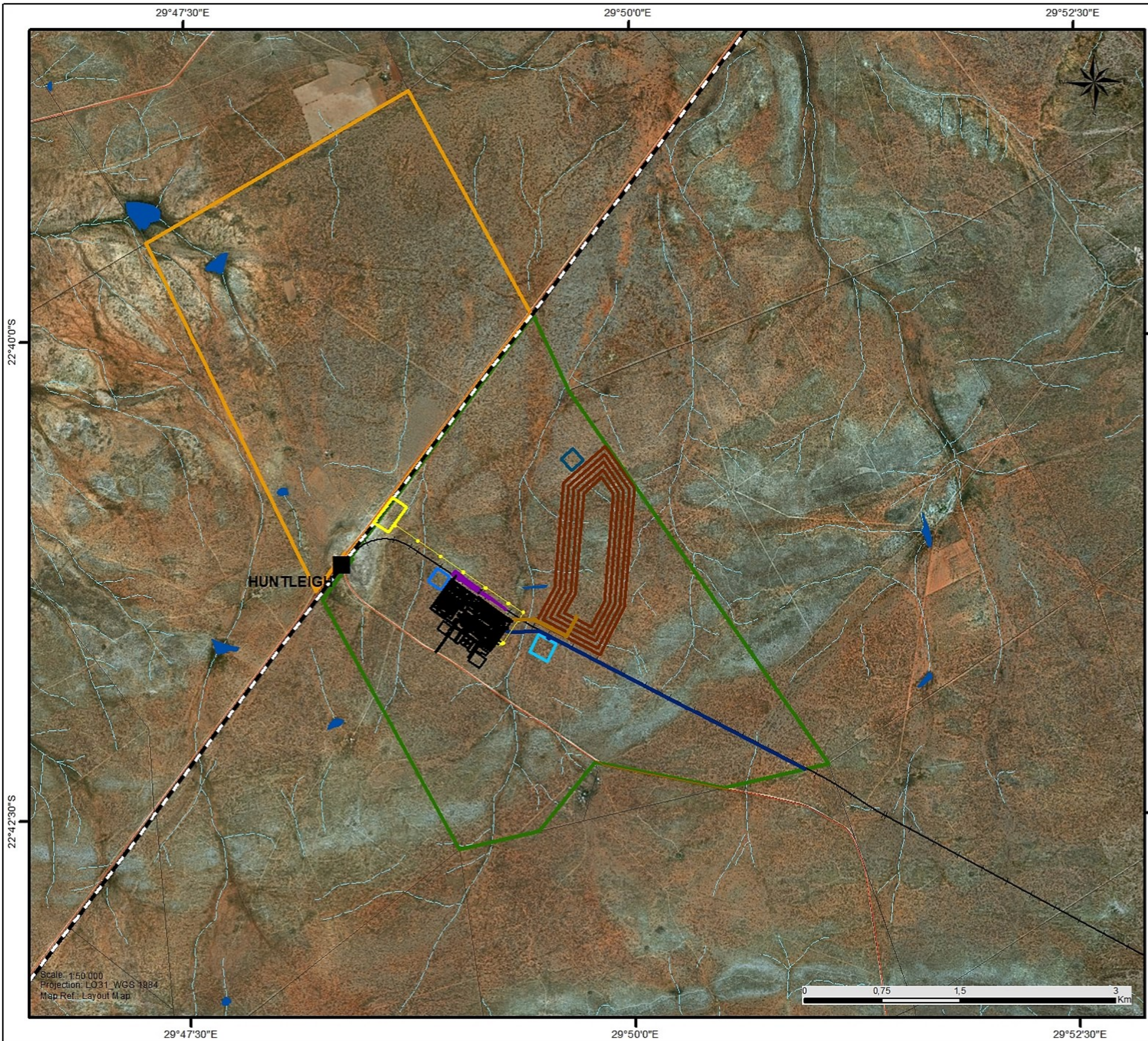
Mutsho Power Project Project Site

Legend:

-  Mutsho Power Project
-  Farm Portions
-  Municipal Boundary
-  Railway Station
-  Railway Line
- Roads**
-  National Route
-  Main Road
-  Secondary Road

Scale: 1:50 000
 Projection: LO31_WGS 1984
 Map Ref.: Locality Map - 14.08.2017





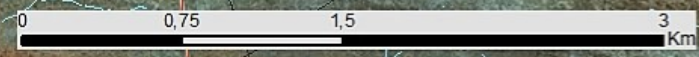
Mutsho Power Project Preferred Alternative

Legend:

- Farm Du Toit 563
- Farm Vrienden 589
- Cadastral Boundary
- Roads**
- National Route
- Main Road
- Secondary Road
- Railways**
- Railway Station
- Railway Line
- Proposed Railway Loop
- NFEPA Rivers & Wetlands**
- NFEPA River
- NFEPA Wetland
- Rivers and Wetlands**
- Non-Perennial River
- Perennial River
- Project Layout**
- Power Plant
- Plant Run-off Dam
- Ash Conveyor
- Ash Dump
- Ash Dump Run-off Dam
- 132kV Powerline
- Substation
- Raw Water Pipeline
- Raw Water Storage Dam
- Railway Siding



Scale: 1:50,000
Projection: LO31_WGS 1984
Map Ref.: Layout Map



Mutsho Power Project Preferred Alternative

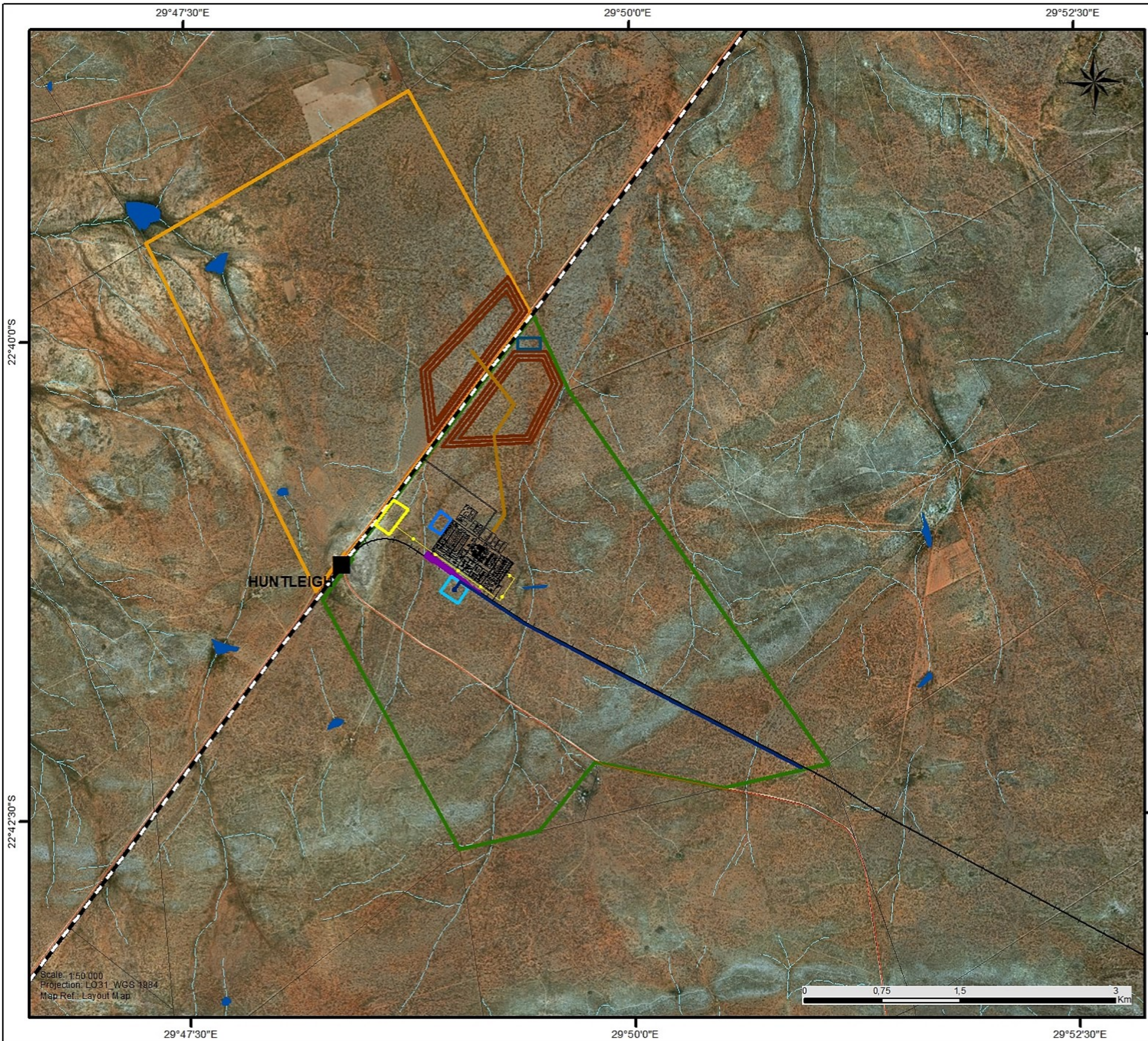
Legend:

- Farm Du Toit 563
- Farm Vrienden 589
- Cadastral Boundary
- Roads**
- National Route
- Main Road
- Secondary Road
- Railways**
- Railway Station
- Railway Line
- Proposed Railway Loop
- NFEPA Rivers & Wetlands**
- NFEPA River
- NFEPA Wetland
- Rivers and Wetlands**
- Non-Perennial River
- Perennial River
- Project Layout**
- Power Plant
- Plant Run-off Dam
- Ash Conveyor
- Ash Dump
- Ash Dump Run-off Dam
- 132kV Powerline
- Substation
- Raw Water Pipeline
- Raw Water Storage Dam
- Railway Siding



Scale: 1:30,000
Projection: LO31_WGS 1984
Map Ref.: Layout Map





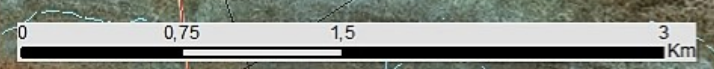
Mutsho Power Project Alternative A

Legend:

- Farm Du Toit 563
- Farm Vrienden 589
- Cadastral Boundary
- Roads**
- National Route
- Main Road
- Secondary Road
- Railways**
- Railway Station
- Railway Line
- Proposed Railway Loop
- NFEPA Rivers & Wetlands**
- NFEPA River
- NFEPA Wetland
- Rivers and Wetlands**
- Non-Perennial River
- Perennial River
- Project Layout**
- Power Plant
- Plant Run-off Dam
- Ash Conveyor
- Ash Dump
- Ash Dump Run-off Dam
- 132kV Powerline
- Substation
- Raw Water Pipeline
- Raw Water Storage Dam
- Railway Siding



Scale: 1:50,000
Projection: LO31_WGS 1984
Map Ref.: Layout Map



Mutsho Power Project Alternative A

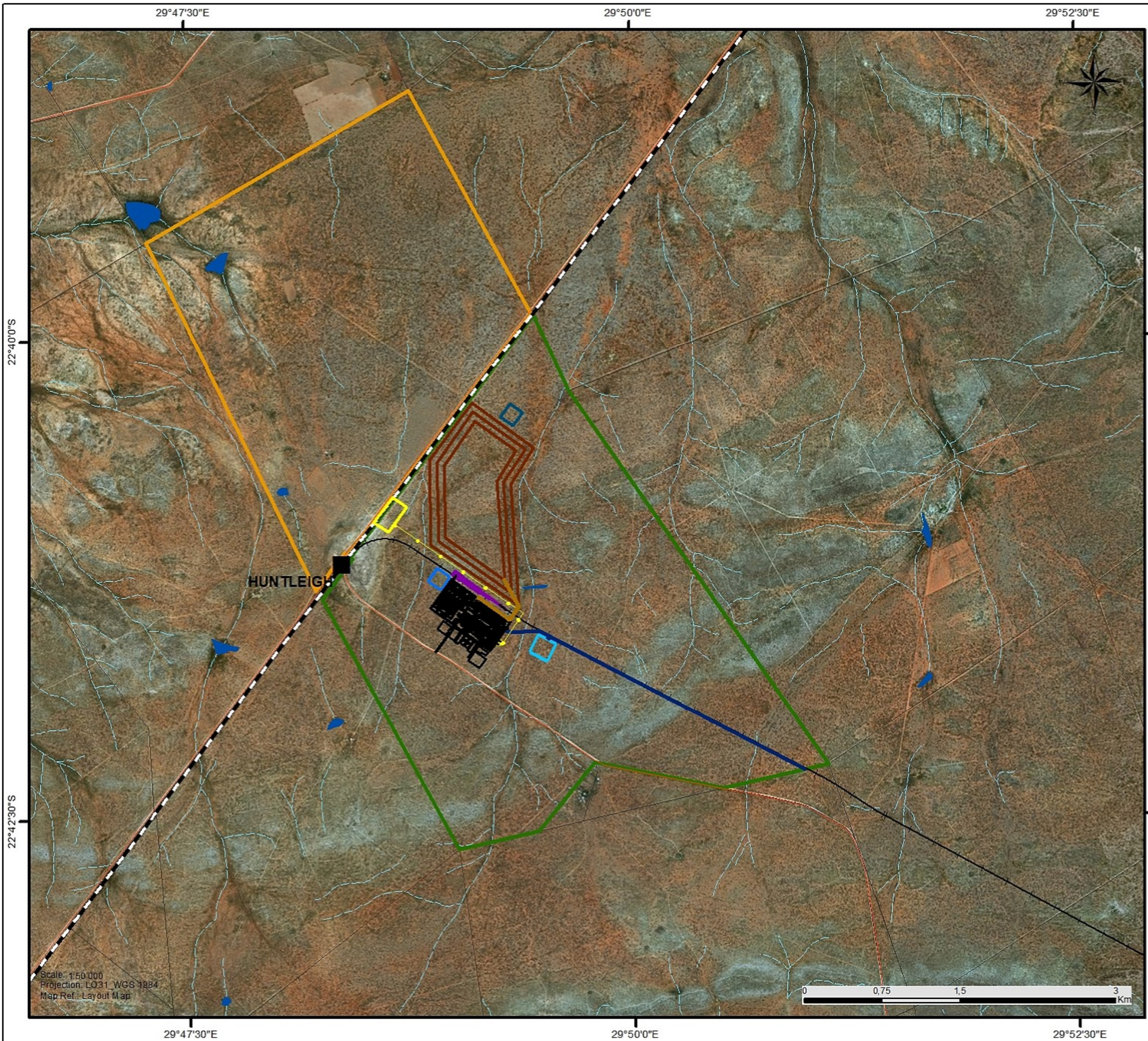
Legend:

- Farm Du Toit 563
- Farm Vrienden 589
- Cadastral Boundary
- Roads**
- National Route
- Main Road
- Secondary Road
- Railways**
- Railway Station
- Railway Line
- Proposed Railway Loop
- NFEPA Rivers & Wetlands**
- NFEPA River
- NFEPA Wetland
- Rivers and Wetlands**
- Non-Perennial River
- Perennial River
- Project Layout**
- Power Plant
- Plant Run-off Dam
- Ash Conveyor
- Ash Dump
- Ash Dump Run-off Dam
- 132kV Powerline
- Substation
- Raw Water Pipeline
- Raw Water Storage Dam
- Railway Siding



Scale: 1:30,000
Projection: LO31_WGS 1984
Map Ref.: Layout Map





Mutsho Power Project Alternative B

Legend:

- Farm Du Toit 563
- Farm Vrienden 589
- Cadastral Boundary
- Roads**
- National Route
- Main Road
- Secondary Road
- Railways**
- Railway Station
- Railway Line
- Proposed Railway Loop
- NFEPA Rivers & Wetlands**
- NFEPA River
- NFEPA Wetland
- Rivers and Wetlands**
- Non-Perennial River
- Perennial River
- Project Layout**
- Power Plant
- Plant Run-off Dam
- Ash Conveyor
- Ash Dump
- Ash Dump Run-off Dam
- 132kV Powerline
- Substation
- Raw Water Pipeline
- Raw Water Storage Dam
- Railway Siding



Mutsho Power Project Alternative B

Legend:

- Farm Du Toit 563
- Farm Vrienden 589
- Cadastral Boundary
- Roads**
- National Route
- Main Road
- Secondary Road
- Railways**
- Railway Station
- Railway Line
- Proposed Railway Loop
- NFEPA Rivers & Wetlands**
- NFEPA River
- NFEPA Wetland
- Rivers and Wetlands**
- Non-Perennial River
- Perennial River
- Project Layout**
- Power Plant
- Plant Run-off Dam
- Ash Conveyor
- Ash Dump
- Ash Dump Run-off Dam
- 132kV Powerline
- Substation
- Raw Water Pipeline
- Raw Water Storage Dam
- Railway Siding



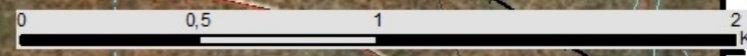
22°40'0"S

22°40'0"S

29°50'0"E

HUNTLEIGH

Scale: 1:30,000
Projection: LO31_WGS 1984
Map Ref.: Layout Map



29°50'0"E

22°42'30"S

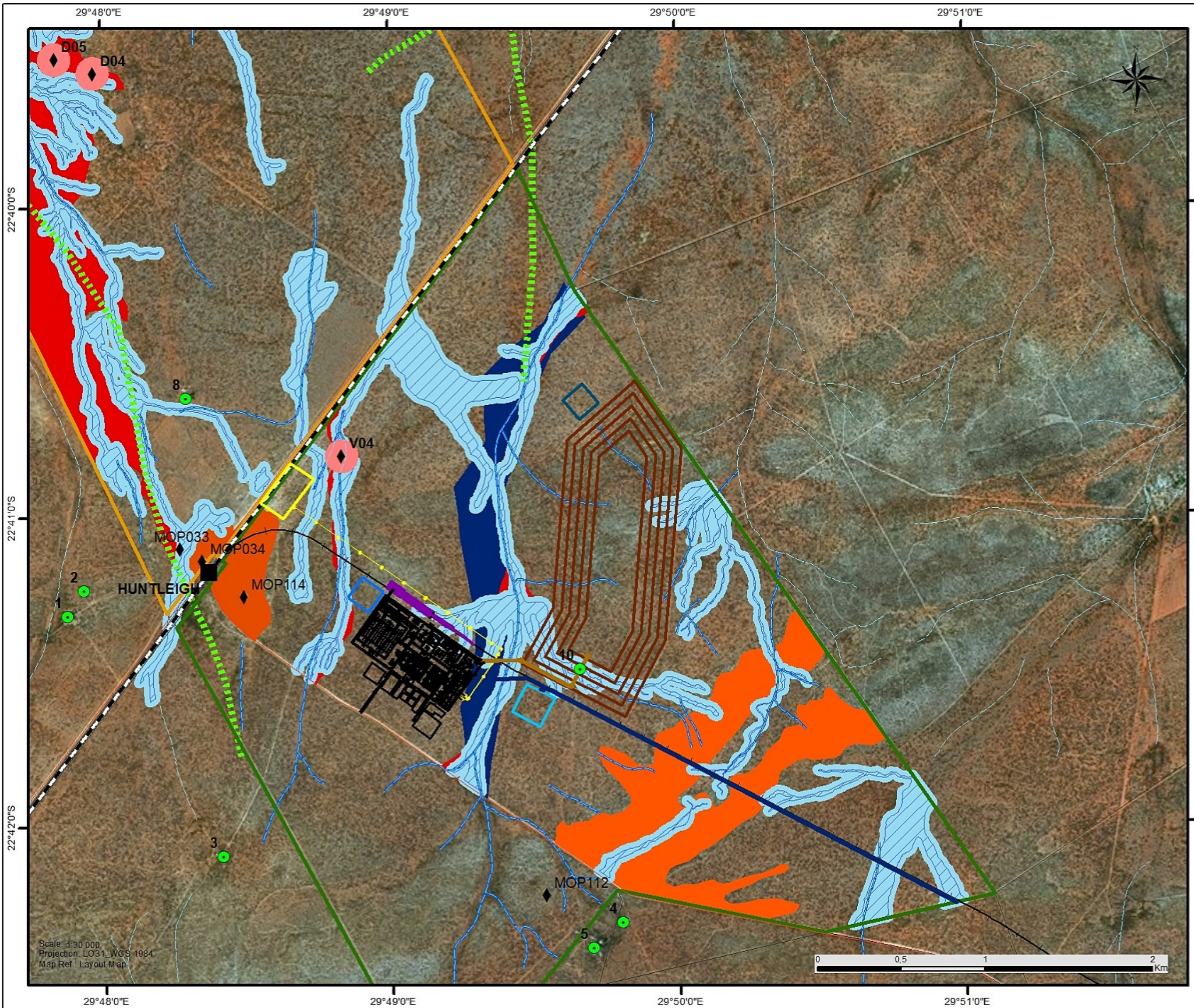
22°42'30"S



savannah
environmental

Project Site

Zimbabwe
Botswana
Limpopo
North West
Gauteng
Mpumalanga



Mutsho Power Project

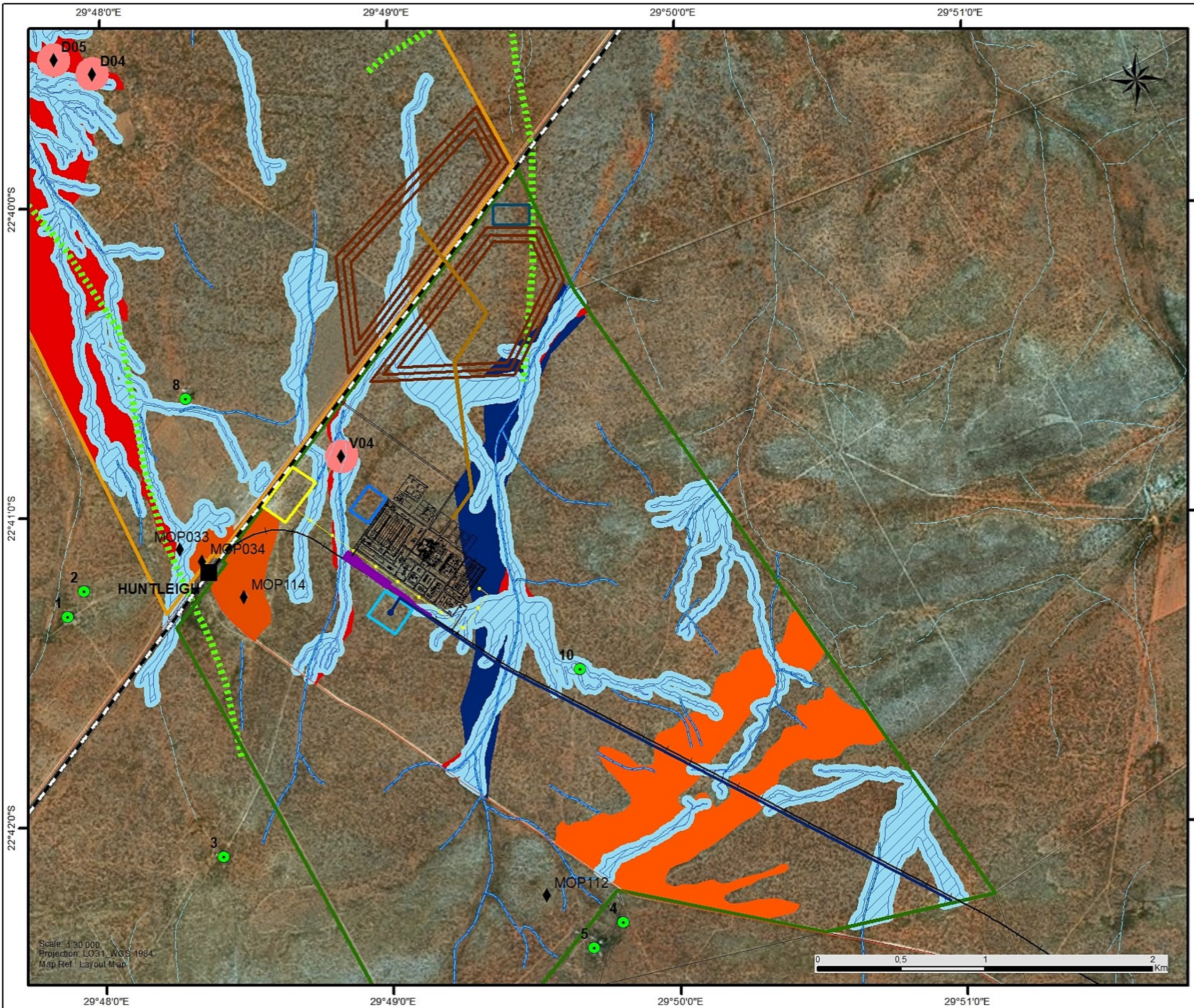
Preferred Alternative Environmental Sensitivity

Legend:

- Farm Du Toit 563
- Farm Vrienden 589
- Cadastral Boundary
- Roads**
- National Route
- Main Road
- Secondary Road
- Railways**
- Railway Station
- Railway Line
- Proposed Railway Loop
- Rivers and Wetlands**
- Non-Perennial River
- Perennial River
- Project Layout**
- Power Plant
- Plant Run-off Dam
- Ash Conveyor
- Ash Dump
- Ash Dump Run-off Dam
- 132kV Powerline
- Substation
- Raw Water Pipeline
- Raw Water Storage Dam
- Railway Siding
- Soils & Agricultural Potential**
- Wetland Area (To be avoided)
- Heritage**
- Heritage Site
- Heritage Buffer
- Ecological Sensitivity:**
- Very High Sensitivity
- High Sensitivity
- Medium-High Sensitivity
- Drainage Lines Sensitivity
- Hydrology & Geohydrology**
- Geological Fault
- Pan
- Ephemeral Drainage Line
- 32m Buffer

Scale: 1:30 000
 Projection: LO31_WGS 1984
 Map Ref.: Layout Map





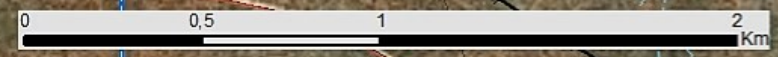
Mutsho Power Project

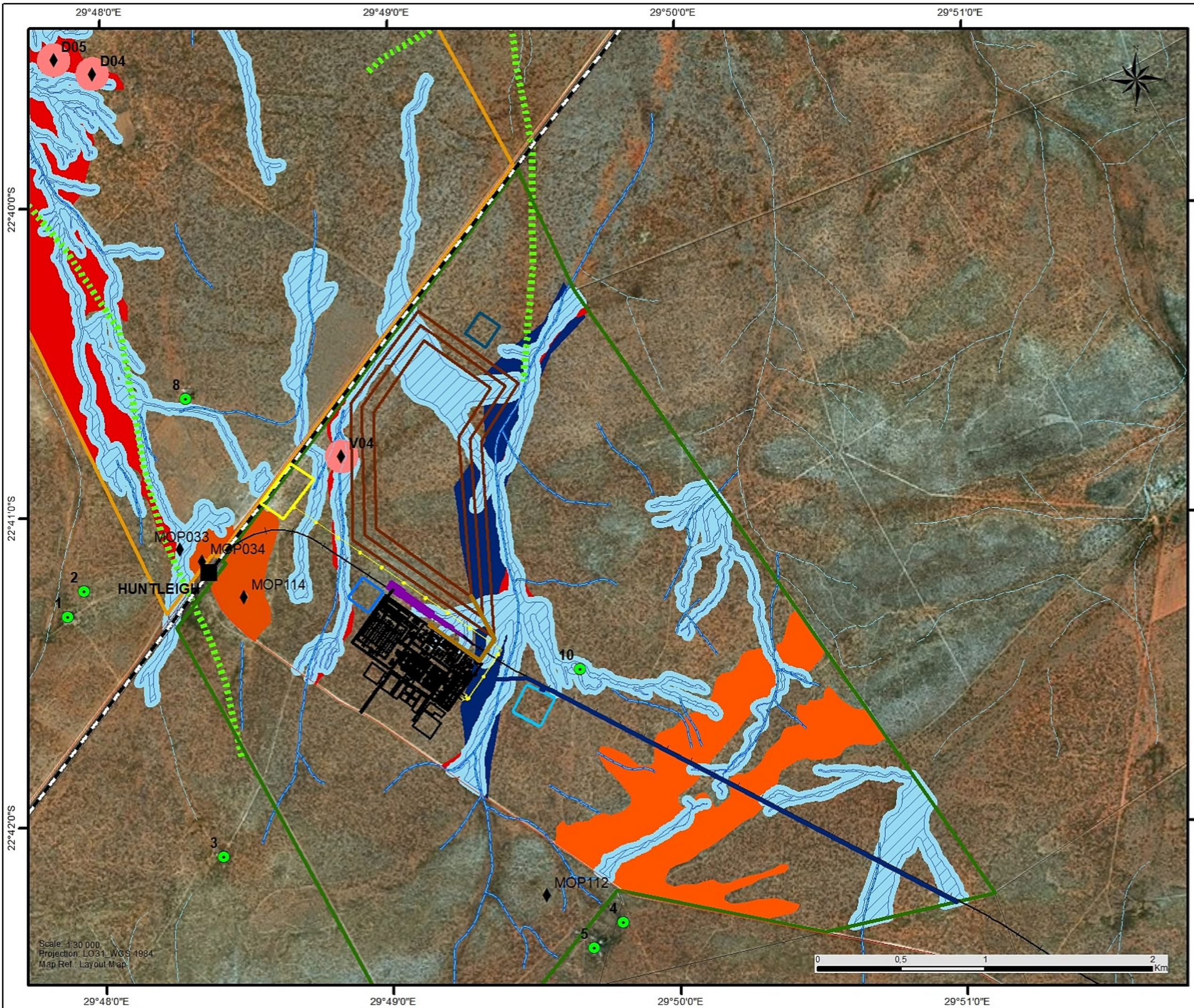
Alternative A Environmental Sensitivity

Legend:

- Farm Du Toit 563
- Farm Vrienden 589
- Cadastral Boundary
- Roads**
- National Route
- Main Road
- Secondary Road
- Railways**
- Railway Station
- Railway Line
- Proposed Railway Loop
- Rivers and Wetlands**
- Non-Perennial River
- Perennial River
- Project Layout**
- Power Plant
- Plant Run-off Dam
- Ash Conveyor
- Ash Dump
- Ash Dump Run-off Dam
- 132kV Powerline
- Substation
- Raw Water Pipeline
- Raw Water Storage Dam
- Railway Siding
- Soils & Agricultural Potential**
- Wetland Area (To be avoided)
- Heritage**
- Heritage Site
- Heritage Buffer
- Ecological Sensitivity:**
- Very High Sensitivity
- High Sensitivity
- Medium-High Sensitivity
- Drainage Lines Sensitivity
- Hydrology & Geohydrology**
- Geological Fault
- Pan
- Ephemeral Drainage Line
- 32m Buffer

Scale: 1:30 000
 Projection: LO31_WGS 1984
 Map Ref.: Layout Map





Mutsho Power Project

Alternative B Environmental Sensitivity

Legend:

- Farm Du Toit 563
- Farm Vrienden 589
- Cadastral Boundary
- Roads**
- National Route
- Main Road
- Secondary Road
- Railways**
- Railway Station
- Railway Line
- Proposed Railway Loop
- Rivers and Wetlands**
- Non-Perennial River
- Perennial River
- Project Layout**
- Power Plant
- Plant Run-off Dam
- Ash Conveyor
- Ash Dump
- Ash Dump Run-off Dam
- 132kV Powerline
- Substation
- Raw Water Pipeline
- Raw Water Storage Dam
- Railway Siding
- Soils & Agricultural Potential**
- Wetland Area (To be avoided)
- Heritage**
- Heritage Site
- Heritage Buffer
- Ecological Sensitivity:**
- Very High Sensitivity
- High Sensitivity
- Medium-High Sensitivity
- Drainage Lines Sensitivity
- Hydrology & Geohydrology**
- Geological Fault
- Pan
- Ephemeral Drainage Line
- 32m Buffer

Scale: 1:30 000
 Projection: LO31_WGS 1984
 Map Ref.: Layout Map

