

Legend

-  Roads
-  Loeriesfontein 3 Overhead Powerline (132kV)

Strategic transmission corridors

-  Northern corridor
-  Western corridor



Prepared for:
Nala Environmental Consulting Firm

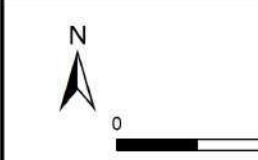


Prepared by:
Ecofluence Consulting



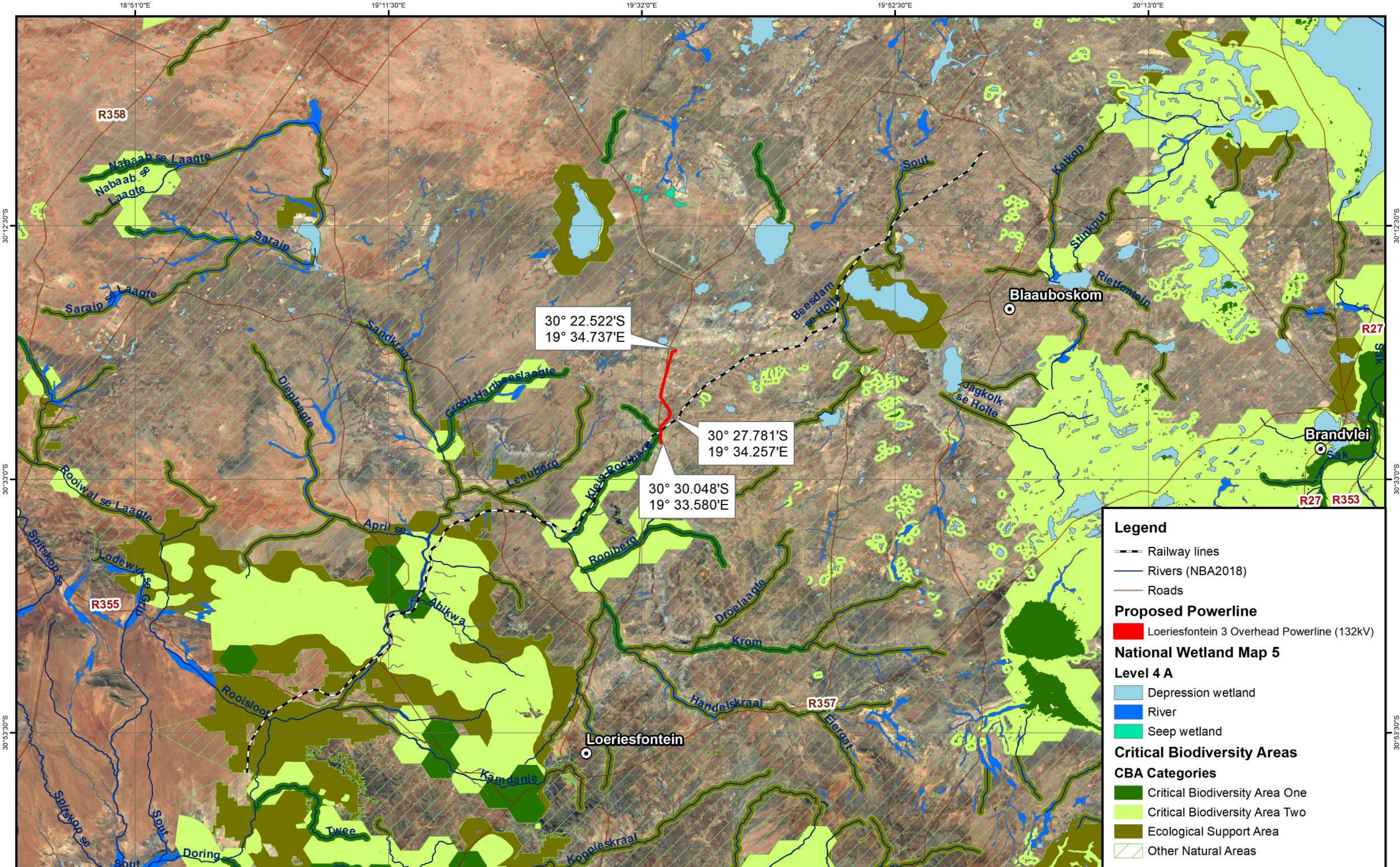
**Loeriesfontein 132kV Overhead Powerline
and associated infrastructure,
Northern Cape**
DFFE Ref.: 12/12/20/2321/2/2

Strategic Transmission Corridor map



Coordinate System: GCS WGS 1984
Datum: WGS 1984
Units: Degree
Scale: 1:500 000
Date: October 2022





Legend

- Railway lines
- Rivers (NBA2018)
- Roads

Proposed Powerline

- Loeriesfontein 3 Overhead Powerline (132kV)

National Wetland Map 5

Level 4 A

- Depression wetland
- River
- Seep wetland

Critical Biodiversity Areas

CBA Categories

- Critical Biodiversity Area One
- Critical Biodiversity Area Two
- Ecological Support Area
- Other Natural Areas



Prepared for:
Nala Environmental Consulting Firm

Prepared by:
Ecofluence Consulting

Loeriesfontein 132kV Overhead Powerline and associated infrastructure, Northern Cape
 DFFE Ref.: 12/12/20/2321/2/2

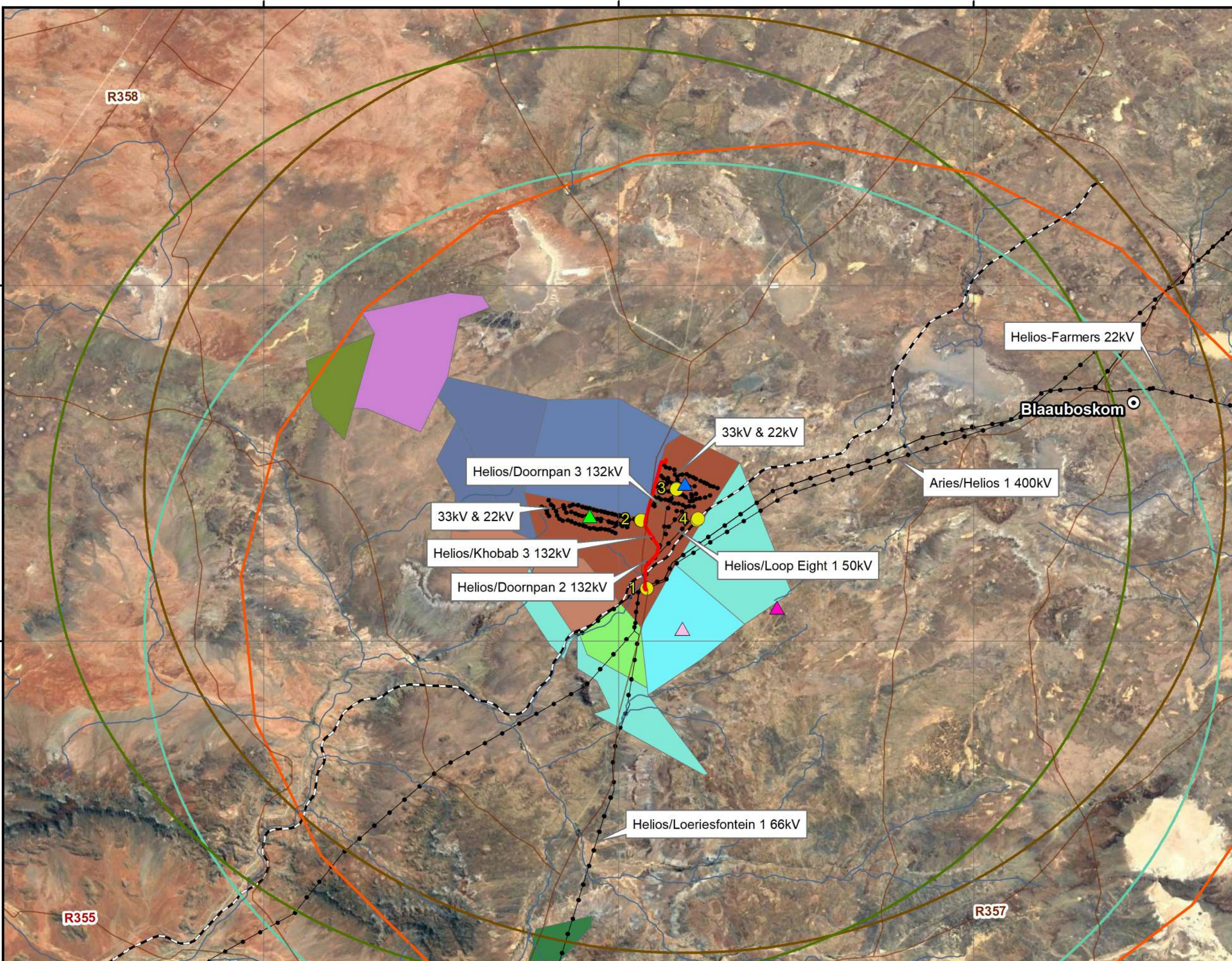
Locality map

Coordinate System: GCS WGS 1984
 Datum: WGS 1984
 Units: Degree
 Scale: 1:500 000
 Date: January 2023

Prevailing Wind Direction:

West: August to April (8.5 months)
 North: April to August (3.5 months)





Legend

- Railway Lines
- Rivers (NBA2018)
- Roads

Proposed Powerline

- Loeriesfontein 3 Overhead Powerline (132kV)

Cumulative facilities

Operational/Authorised

- IXHA Boom Wind Energy Farm
- 235MW Graskoppies Wind Farm
- 240 MW Kokerboom 2 WEF
- 256MW Kokerboom1 WEF
- 50MW WEF & 100MW Solar Photovoltaic EF
- 140MW Dwarsrug Wind Farm
- 60MW Kokerboom 5 WEF
- CPV/PV Solar Power Plant
- Hantam 7PV solar EF & associated infrastructure
- Khobab WEF
- Loeriesfontein WEF
- 196MW Kokerboom 1 WEF
- 240 MW Kokerboom 2 WEF
- 240MW Kokerboom 3 WEF
- 256 Kokerboom1 WEF
- 100mw PV Solar Farm
- Photovoltaic Solar Facility near Loeriesfontein
- Orlight Sa Solar Photovoltaic Power Plant
- 140 MW Khobab wind farm
- Loeriesfontein 2 140MW WEF
- 235MW Ithemba Wind Farm
- 240MW Kokerboom 2 WEF

Existing powerlines

- Existing Powerlines

Existing Substations

- Existing Substations

Preferred Bidders Round 1-5

- Dwarsrug
- Khobab
- Loeriesfontein 2
- Solar Capital Orange
- Khobab
- Loeriesfontein 2
- Placemark
- Solar Capital Orange

Existing Substations		
No	Name	Owner
1	Helios Substation 400kV	ESKOM
2	Khobab Switching Station 132kV	ESKOM
	Khobab Wind Substation 132kV	Other
3	Doornpan Switching Station 132kV	ESKOM
	Loeriesfontein Wind Substation 132kV	Other
4	Loop 8 Substation 50kV	ESKOM
	Helios SATS Substation 50kV	Other

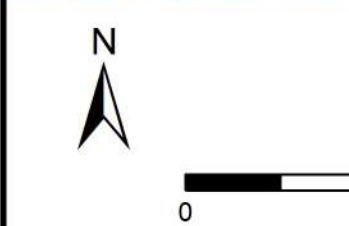


Prepared for:
Nala Environmental Consulting Firm

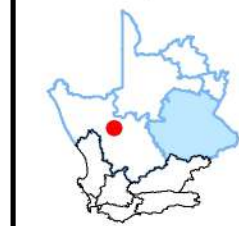
Prepared by:
Ecofluence Consulting

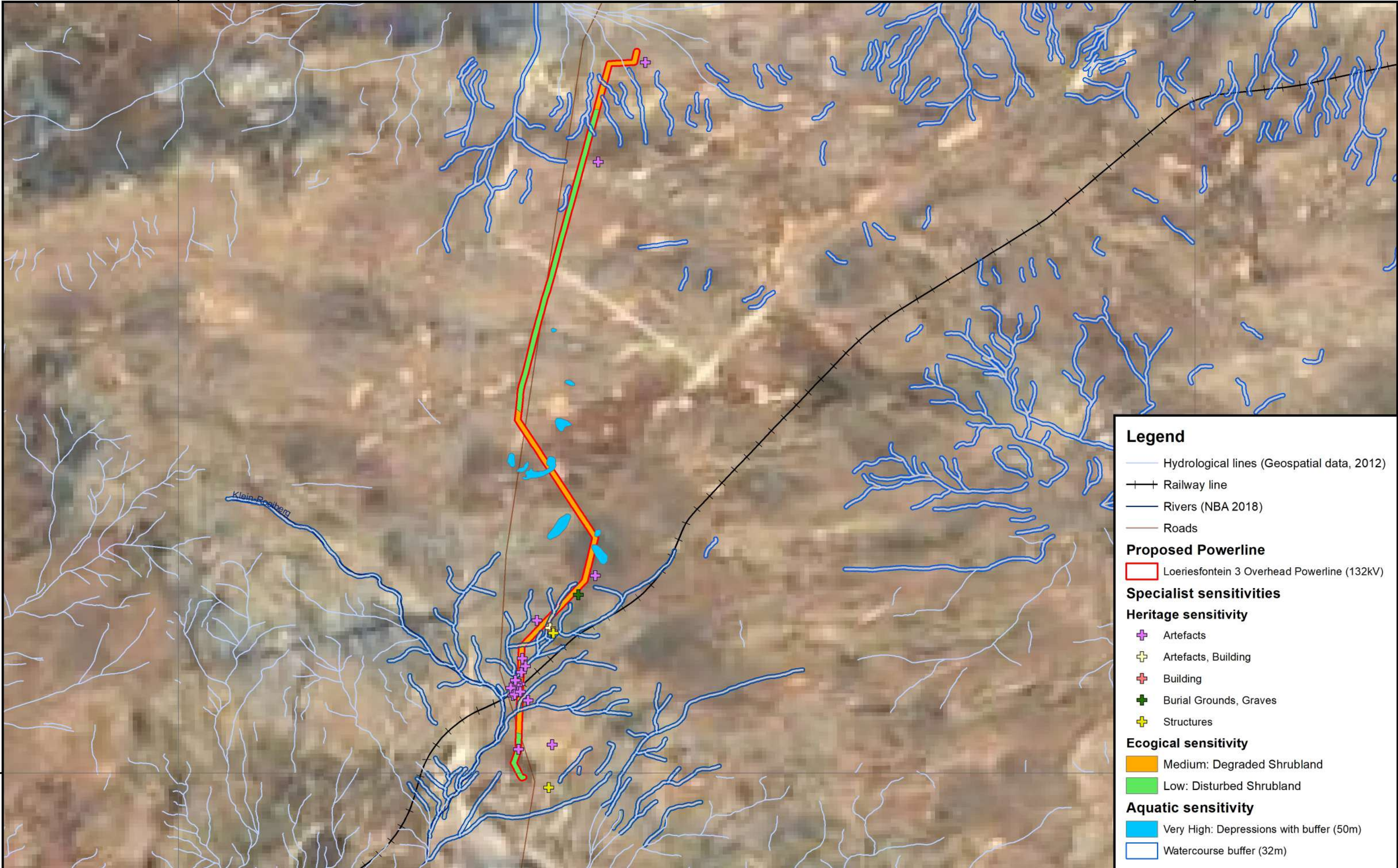
Loeriesfontein 132kV Overhead Powerline and associated infrastructure, Northern Cape
 DFFE Ref.: 12/12/20/2321/2/2

Cumulative Map



Coordinate System: GCS WGS 1984
 Datum: WGS 1984
 Units: Degree
 Scale: 1:400 000
 Date: January 2023





Legend

- Hydrological lines (Geospatial data, 2012)
- Railway line
- Rivers (NBA 2018)
- Roads

Proposed Powerline

- Loeriesfontein 3 Overhead Powerline (132kV)

Specialist sensitivities

Heritage sensitivity

- Artefacts
- Artefacts, Building
- Building
- Burial Grounds, Graves
- Structures

Ecological sensitivity

- Medium: Degraded Shrubland
- Low: Disturbed Shrubland

Aquatic sensitivity

- Very High: Depressions with buffer (50m)
- Watercourse buffer (32m)



Prepared for:
Nala Environmental Consulting Firm

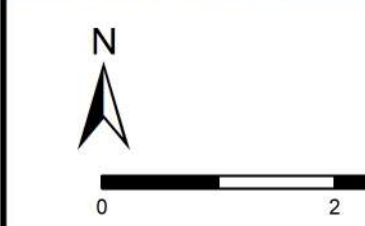


Prepared by:
Ecofluence Consulting

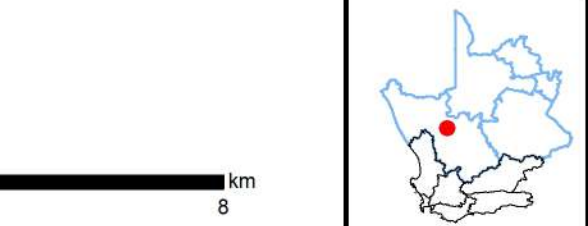


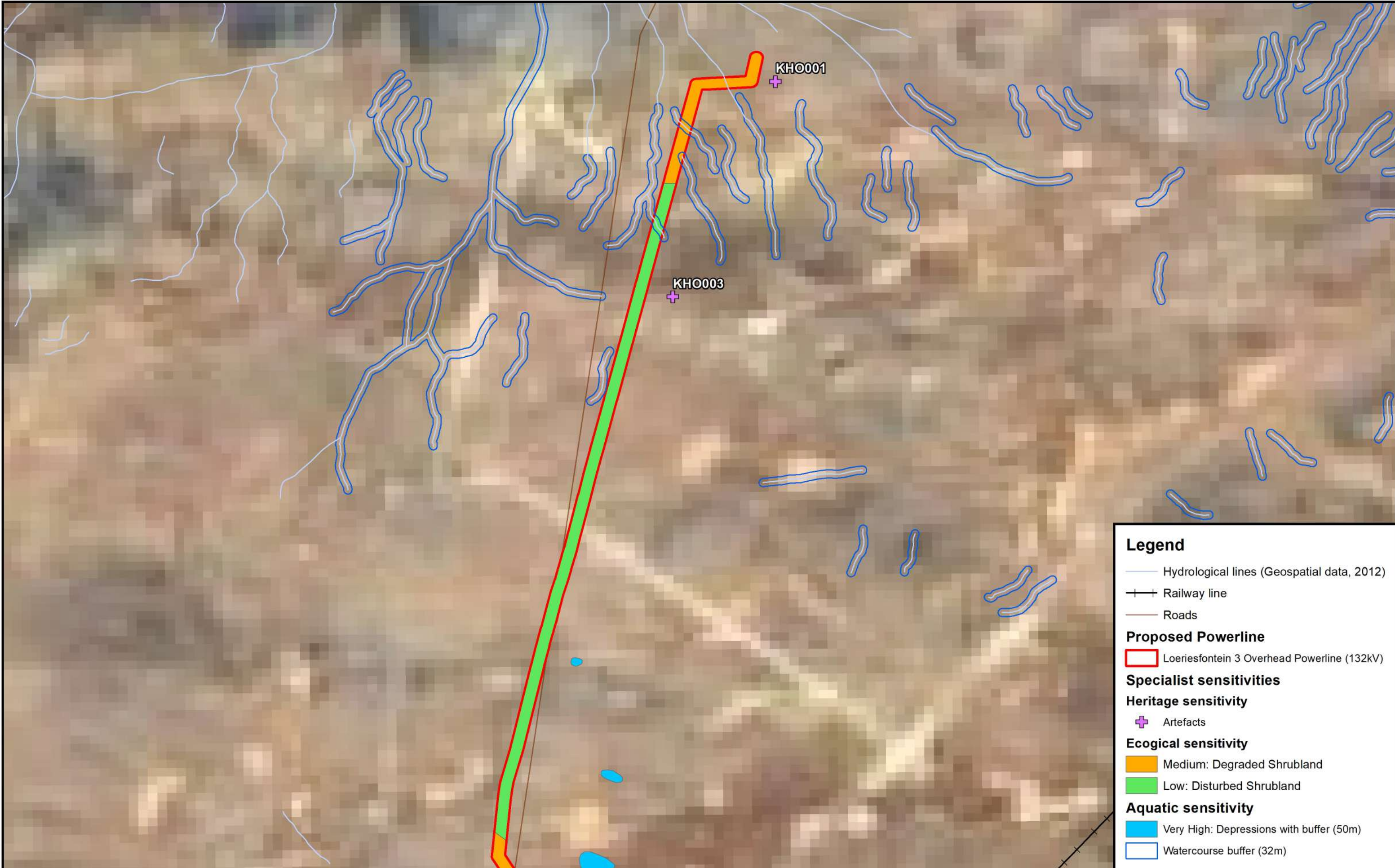
Loeriesfontein 132kV Overhead Powerline and associated infrastructure, Northern Cape
 DFFE Ref.: 12/12/20/2321/2/2

Sensitivity map



Coordinate System: GCS WGS 1984
 Datum: WGS 1984
 Units: Degree
 Scale: 1:65 000
 Date: January 2023





Legend

- Hydrological lines (Geospatial data, 2012)
- Railway line
- Roads

Proposed Powerline

- Loeriesfontein 3 Overhead Powerline (132kV)

Specialist sensitivities

Heritage sensitivity

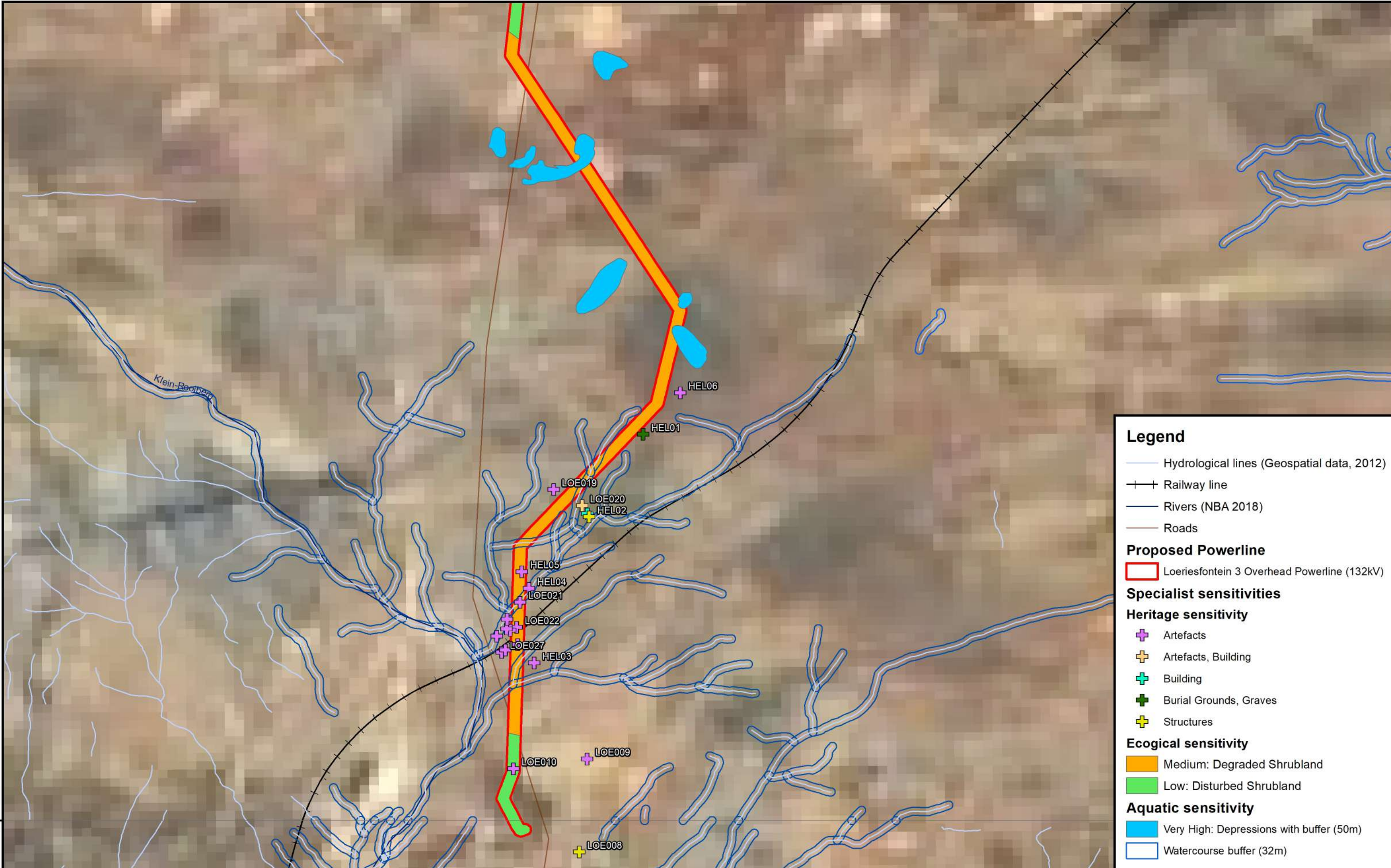
- Artefacts

Ecological sensitivity

- Medium: Degraded Shrubland
- Low: Disturbed Shrubland

Aquatic sensitivity

- Very High: Depressions with buffer (50m)
- Watercourse buffer (32m)



Legend

- Hydrological lines (Geospatial data, 2012)
- Railway line
- Rivers (NBA 2018)
- Roads

Proposed Powerline

- Loeriesfontein 3 Overhead Powerline (132kV)

Specialist sensitivities

Heritage sensitivity

- Artefacts
- Artefacts, Building
- Building
- Burial Grounds, Graves
- Structures

Ecological sensitivity

- Medium: Degraded Shrubland
- Low: Disturbed Shrubland

Aquatic sensitivity

- Very High: Depressions with buffer (50m)
- Watercourse buffer (32m)



Prepared for:
Nala Environmental Consulting Firm

Prepared by:
Ecofluence Consulting

Loeriesfontein 132kV Overhead Powerline and associated infrastructure, Northern Cape
 DFFE Ref.: 12/12/20/2321/2/2

Sensitivity map: Southern portion

Coordinate System: GCS WGS 1984
 Datum: WGS 1984
 Units: Degree
 Scale: 1:65 000
 Date: January 2023

