

Legend

- Main roads
- NFEPA rivers

Existing/Authorised

- Existing Poseidon to Albany Powerline (132kV)
- Authorised 132kV OHL
- Authorised Msenge Emoyeni WEF

Proposed Msenge Facilities

- Proposed 66kV OHL Route (22.7km)
- Proposed 66kV OHL assessment corridor (300m)
- Proposed Msenge substation (250m X 200m)
- Proposed Msenge ss assessment buffer (300m)

National Wetland Map 5 (2019)

- Channelled valley-bottom wetland
- Depression wetland
- Floodplain wetland
- River
- Seep wetland
- Unchannelled valley-bottom wetland

Eastern Cape BCP (2019)

Terrestrial

- PA
- CBA 1
- CBA2
- ESA 1
- ESA 2

Freshwater

- CBA 1
- CBA 2
- ESA 1
- ESA 2



Prepared for:
Nala Environmental Consulting Firm

Prepared by:
Ecofluence Consulting

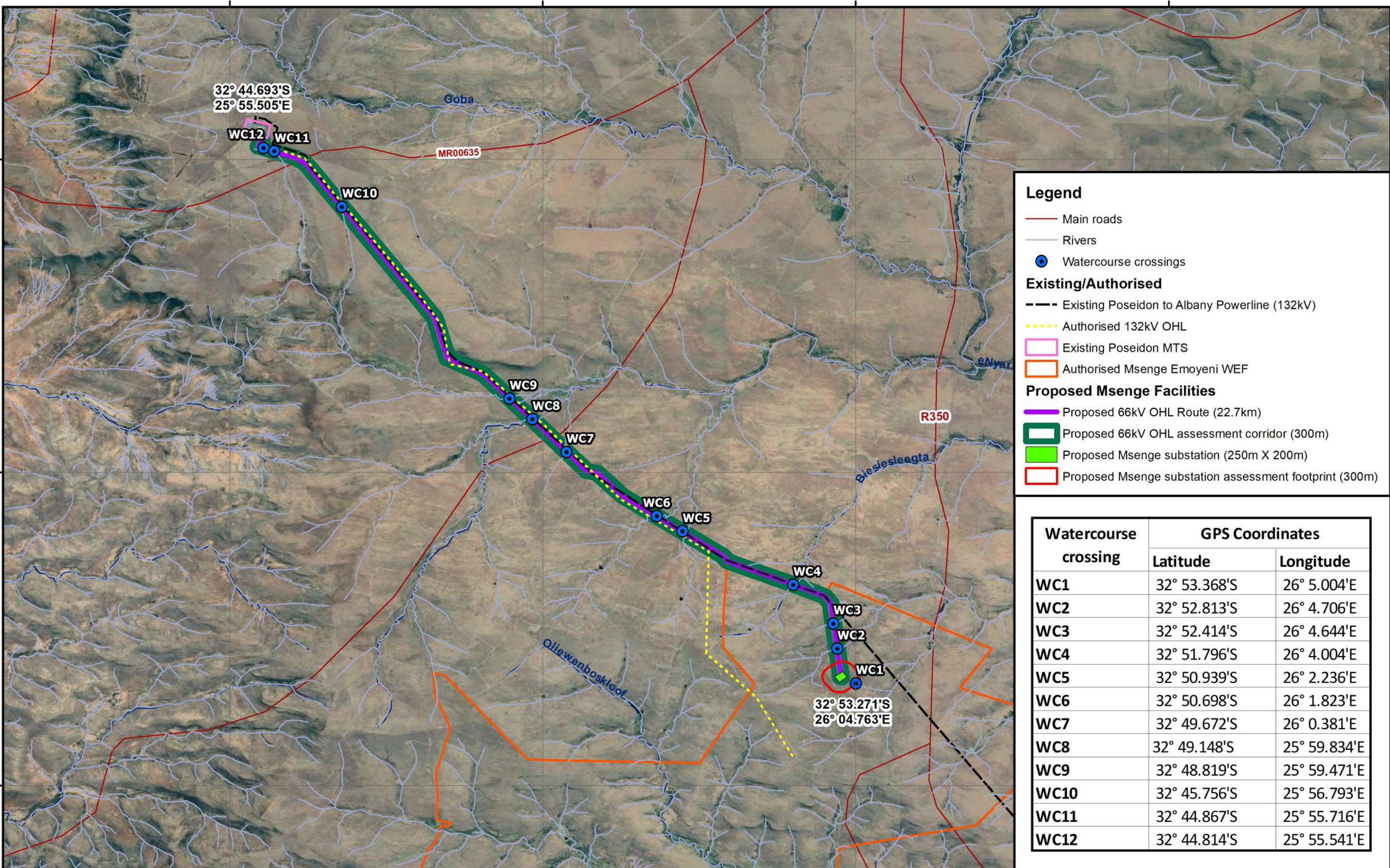
ENVIRONMENTAL IMPACT ASSESSMENT
Proposed Msenge Emoyeni powerline deviation.
Sarah Baartman District Municipality, Eastern Cape

Locality Map

Prevailing wind direction:
North: March to July (4.1 months)
West: July to October (2.3 months)
South: October to March (5.7 months)

Coordinate System: GCS WGS 1984
Datum: WGS 1984
Units: Degree
Scale: 1:300 000
Date: May 2022





Legend

- Main roads
- Rivers
- Watercourse crossings

Existing/Authorised

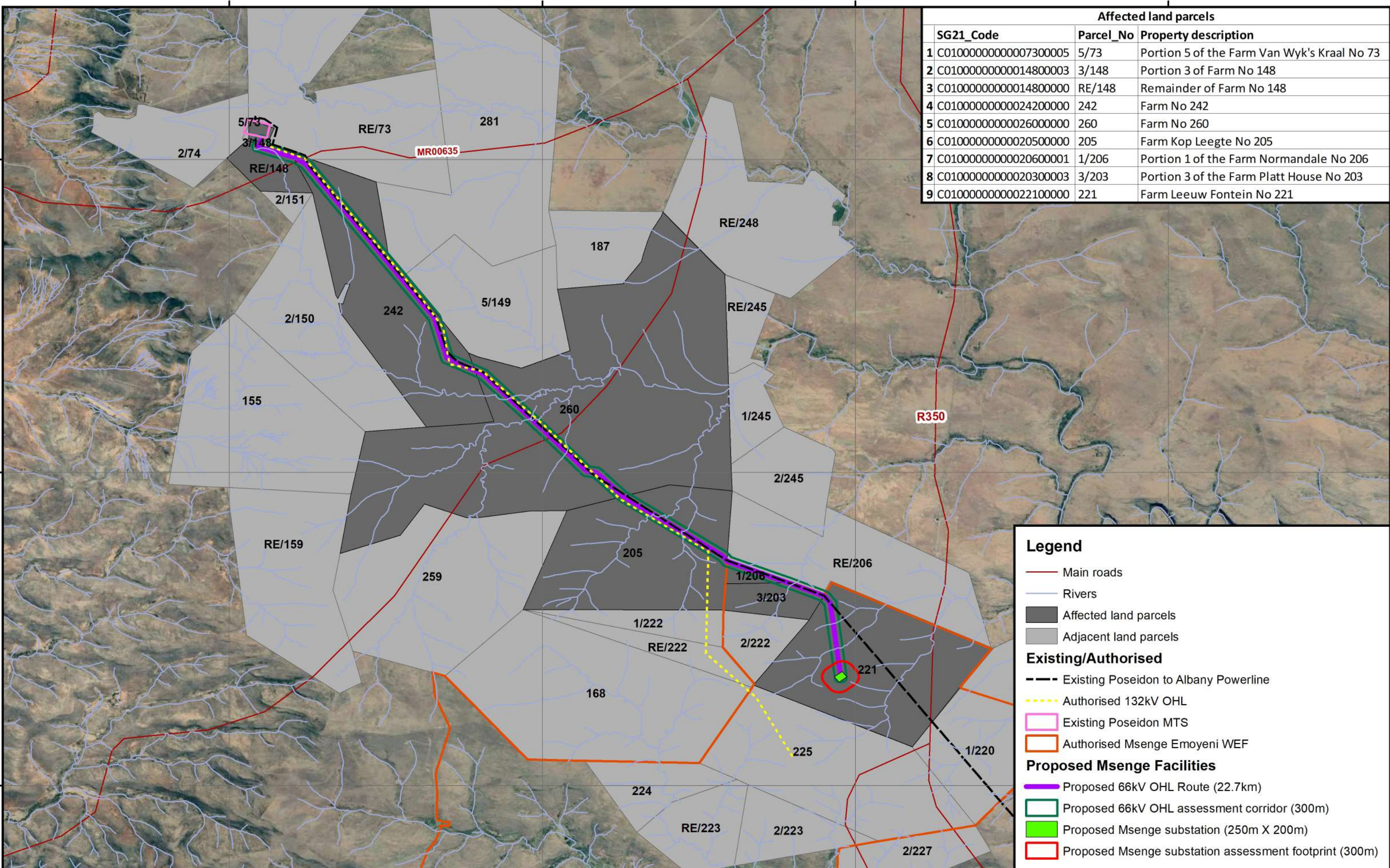
- Existing Poseidon to Albany Powerline (132kV)
- Authorised 132kV OHL
- Existing Poseidon MTS
- Authorised Msenge Emoyeni WEF

Proposed Msenge Facilities

- Proposed 66kV OHL Route (22.7km)
- Proposed 66kV OHL assessment corridor (300m)
- Proposed Msenge substation (250m X 200m)
- Proposed Msenge substation assessment footprint (300m)

Watercourse crossing	GPS Coordinates	
	Latitude	Longitude
WC1	32° 53.368'S	26° 5.004'E
WC2	32° 52.813'S	26° 4.706'E
WC3	32° 52.414'S	26° 4.644'E
WC4	32° 51.796'S	26° 4.004'E
WC5	32° 50.939'S	26° 2.236'E
WC6	32° 50.698'S	26° 1.823'E
WC7	32° 49.672'S	26° 0.381'E
WC8	32° 49.148'S	25° 59.834'E
WC9	32° 48.819'S	25° 59.471'E
WC10	32° 45.756'S	25° 56.793'E
WC11	32° 44.867'S	25° 55.716'E
WC12	32° 44.814'S	25° 55.541'E

Affected land parcels			
SG21_Code	Parcel_No	Property description	
1	C0100000000007300005	5/73	Portion 5 of the Farm Van Wyk's Kraal No 73
2	C01000000000014800003	3/148	Portion 3 of Farm No 148
3	C01000000000014800000	RE/148	Remainder of Farm No 148
4	C01000000000024200000	242	Farm No 242
5	C01000000000026000000	260	Farm No 260
6	C01000000000020500000	205	Farm Kop Leegte No 205
7	C01000000000020600001	1/206	Portion 1 of the Farm Normandale No 206
8	C01000000000020300003	3/203	Portion 3 of the Farm Platt House No 203
9	C01000000000022100000	221	Farm Leeuw Fontein No 221



Legend

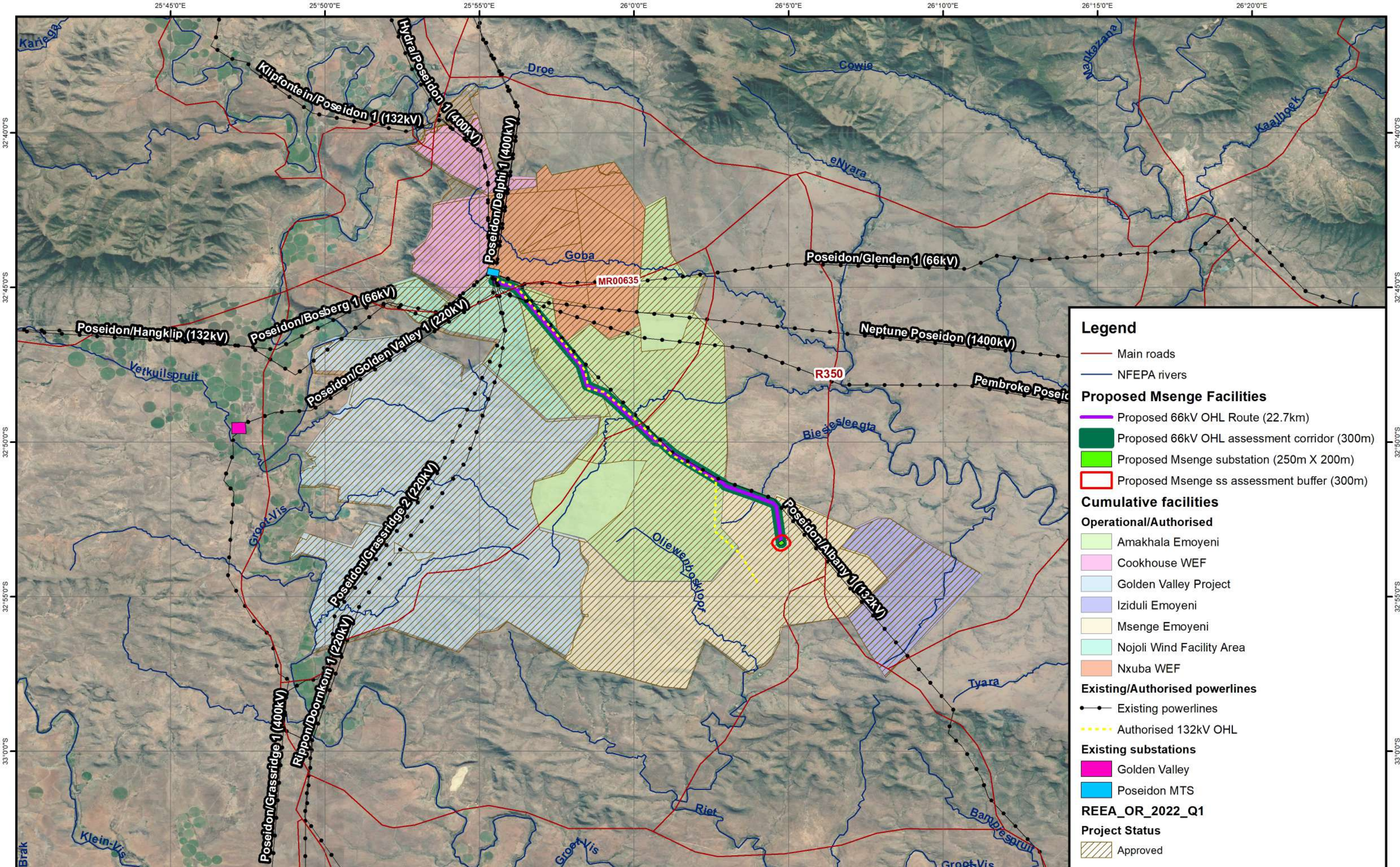
- Main roads
- Rivers
- Affected land parcels
- Adjacent land parcels

Existing/Authorised

- Existing Poseidon to Albany Powerline
- Authorised 132kV OHL
- Existing Poseidon MTS
- Authorised Msenge Emoyeni WEF

Proposed Msenge Facilities

- Proposed 66kV OHL Route (22.7km)
- Proposed 66kV OHL assessment corridor (300m)
- Proposed Msenge substation (250m X 200m)
- Proposed Msenge substation assessment footprint (300m)



Legend

- Main roads
- NFEPA rivers

Proposed Msenge Facilities

- Proposed 66kV OHL Route (22.7km)
- Proposed 66kV OHL assessment corridor (300m)
- Proposed Msenge substation (250m X 200m)
- Proposed Msenge ss assessment buffer (300m)

Cumulative facilities

Operational/Authorised

- Amakhala Emoyeni
- Cookhouse WEF
- Golden Valley Project
- Iziduli Emoyeni
- Msenge Emoyeni
- Nojoli Wind Facility Area
- Nxuba WEF

Existing/Authorised powerlines

- Existing powerlines
- Authorised 132kV OHL

Existing substations

- Golden Valley
- Poseidon MTS

REEA_OR_2022_Q1

Project Status

- Approved



Prepared for:
Nala Environmental Consulting Firm



Prepared by:
Ecofluence Consulting

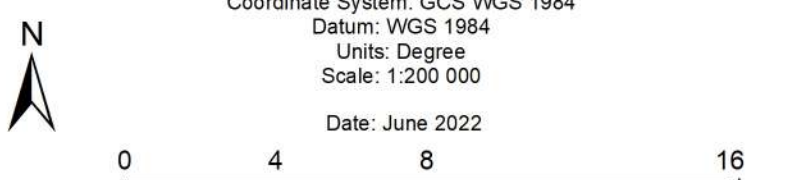


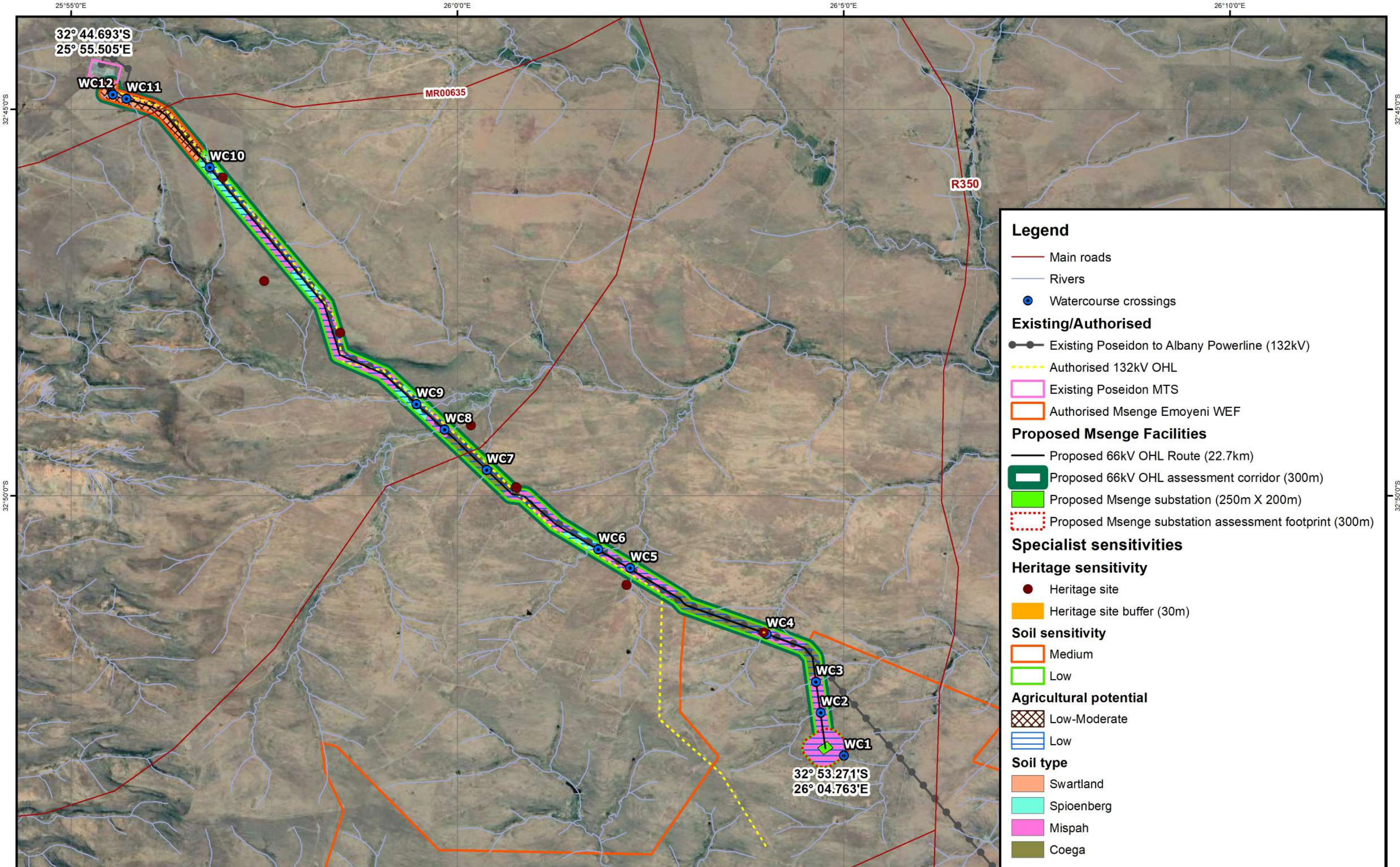
ENVIRONMENTAL IMPACT ASSESSMENT

Proposed Msenge Emoyeni Powerline deviation,
Sarah Baartman District Municipality, Eastern Cape

Cumulative Map

Coordinate System: GCS WGS 1984
Datum: WGS 1984
Units: Degree
Scale: 1:200 000
Date: June 2022



32° 44.693'S
25° 55.505'E

32° 53.271'S
26° 04.763'E



Prepared for:
Nala Environmental Consulting Firm



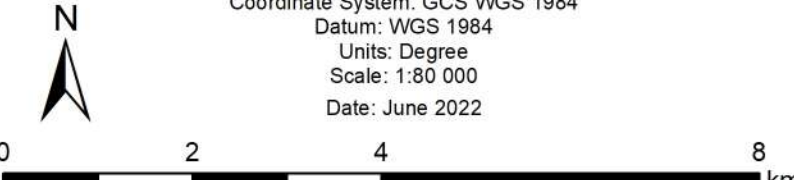
Prepared by:
Ecofluence Consulting

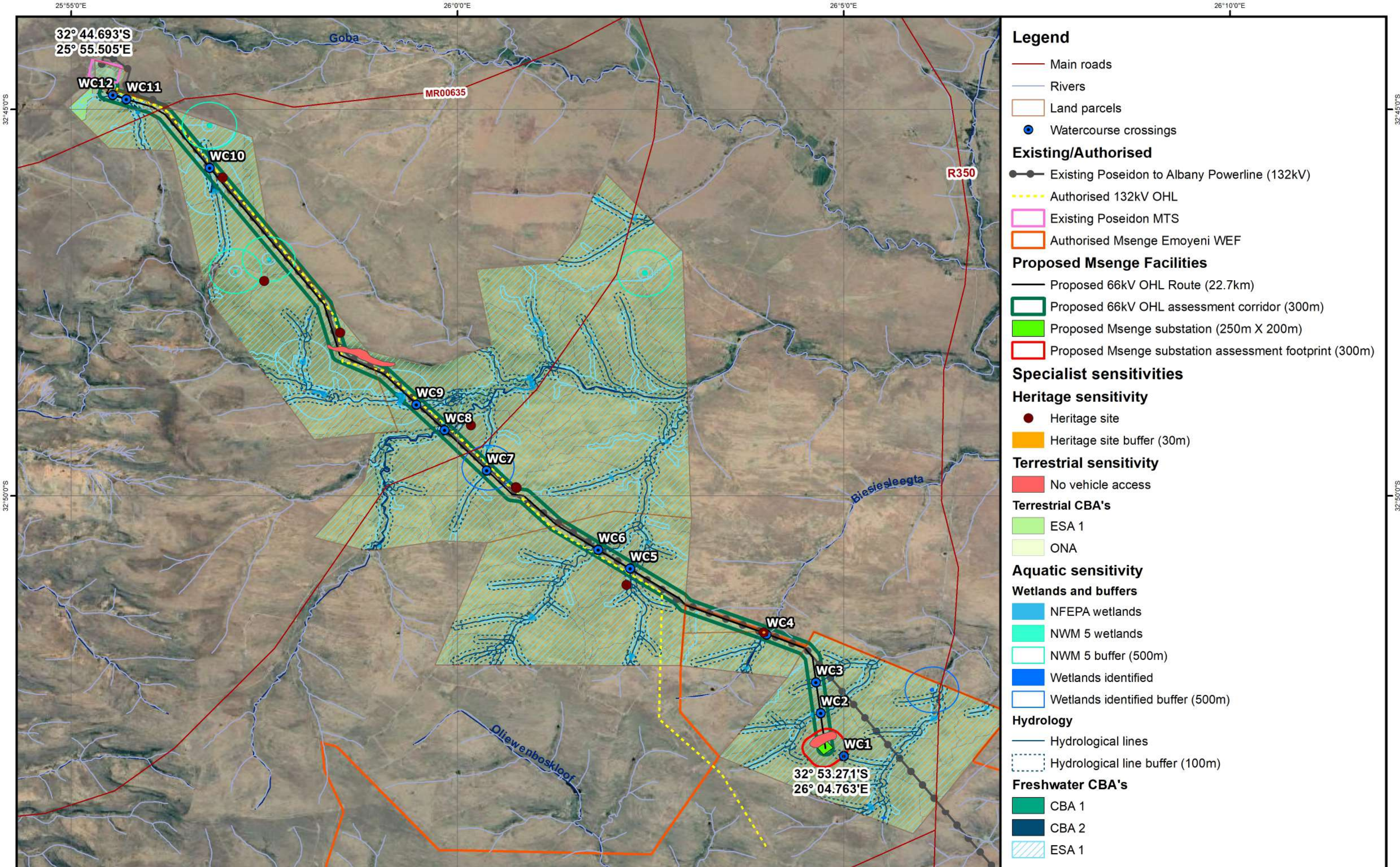


ENVIRONMENTAL IMPACT ASSESSMENT
Proposed Msenge Emoyeni Powerline deviation,
Sarah Baartman District Municipality, Eastern Cape

Sensitivity Map

Coordinate System: GCS WGS 1984
Datum: WGS 1984
Units: Degree
Scale: 1:80 000
Date: June 2022



Prepared for:
Nala Environmental Consulting Firm



Prepared by:
Ecofluence Consulting



ENVIRONMENTAL IMPACT ASSESSMENT
Proposed Msenge Emoyeni Powerline deviation,
Sarah Baartman District Municipality, Eastern Cape

Sensitivity Map

Coordinate System: GCS WGS 1984
Datum: WGS 1984
Units: Degree
Scale: 1:80 000
Date: June 2022

