

**North West**



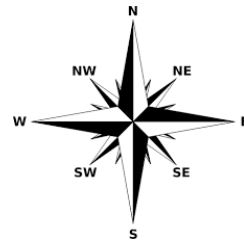
**North**



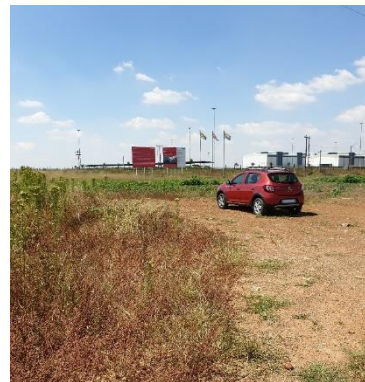
**North East**



**West**



**East**



**South West**

**South**

**South East**



Figure 1: Topography of the development corridor, showing generally flat terrain



Figure 2: General road verge with invasive *Eucalyptus* tree and adjacent maize plantation visible



Figure 3: The railway tracks adjacent to which the proposed pipeline will route near Dunnottar town



Figure 4: Illustration of the most intact wetland vegetation unit on site, immediately adjacent the road at the intersection of the Nigel-Springs Road and the M45

Site photographs were taken in March 2019.