

PIET PLESSIS LANDFILL- SITE PHOTOS

SITE: PIET PLESSIS- KAGISANO MOLOPO LOCAL MUNICIPALITY
Site photos taken on the 02nd SEPTEMBER 2015



Figure 1: View towards the west along the R377 towards Piet Plessis. The site is located on the left. Note windblown litter across the road



Figure 2: View east towards the R377 towards Stella with the site entrance on the left



Figure 3: View north towards the entrance to the site



Figure 4: View towards the North showing an excavation (red arrow)in the background and rubble in the foreground



Figure 5: North East showing vegetation on site



Figure 6: View south with the R377 in the background (red arrow)



Figure 7: View south west towards the site entrance (red arrow) . Note large volumes of rubble on site



Figure 8: View towards the northwest showing the rubble in the foreground and houses in the background (yellow arrow)



Figure 9: View towards the northwest showing the quarry and houses in the background and rubble in the foreground



Figure 10: View East towards the quarry



Figure 11: View towards the east showing the close up of the quarry within the landfill site



Figure 12: View west towards showing the quarry on the right and the rubble on the left

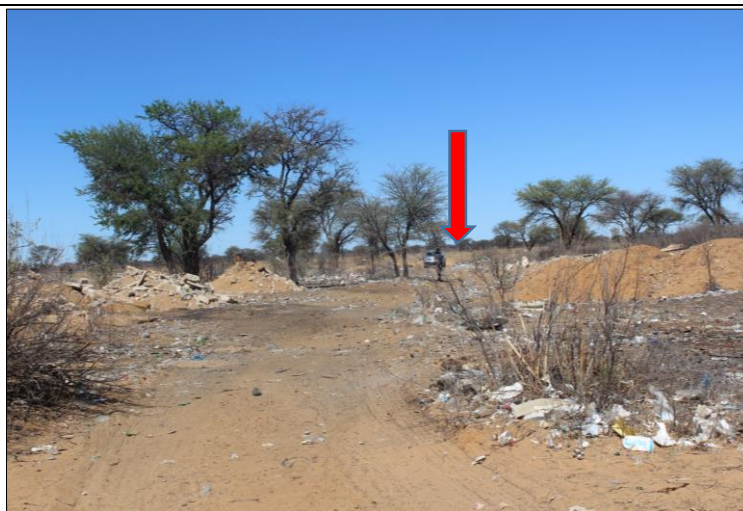


Figure 13: View south towards the entrance to the site (red arrow)



Figure 14: View north toward the new housing area in close proximity to the site. Note the roofs of the housing development indicated by the yellow arrow



Figure 15: View south towards the south towards the R377



Figure 16: View towards the northwest showing the access road on the left indicated by the red arrow



Figure 17: Additional view towards the entrance to the site, note the donkeys feeding on waste



Figure 18: View towards the north east. Photo taken close to the entrance of the site



Figure 19: View north towards the access road from the site towards the housing development in the background indicated by the yellow arrow

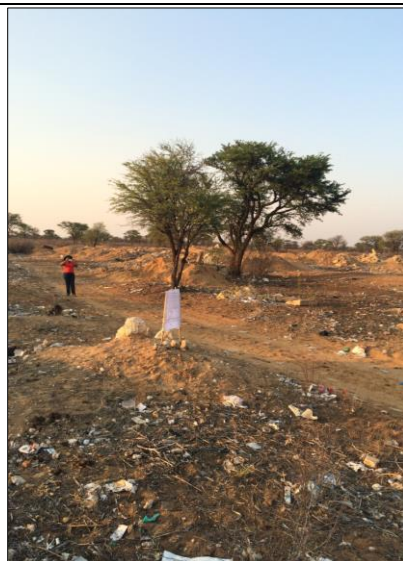


Figure 20: View north with the access road leading to the housing development north of the site



Figure 21: View north towards the access road from the site towards the housing development in close proximity to the site



Figure 22: View towards the east showing the waste body on the site



Figure 23: View south east toward the R377