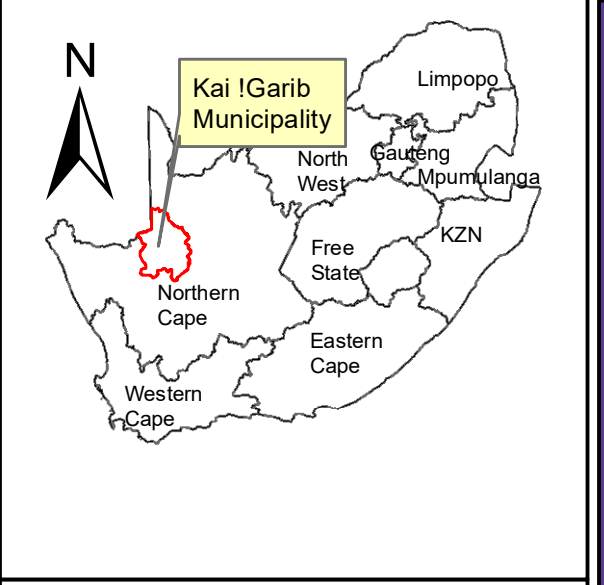
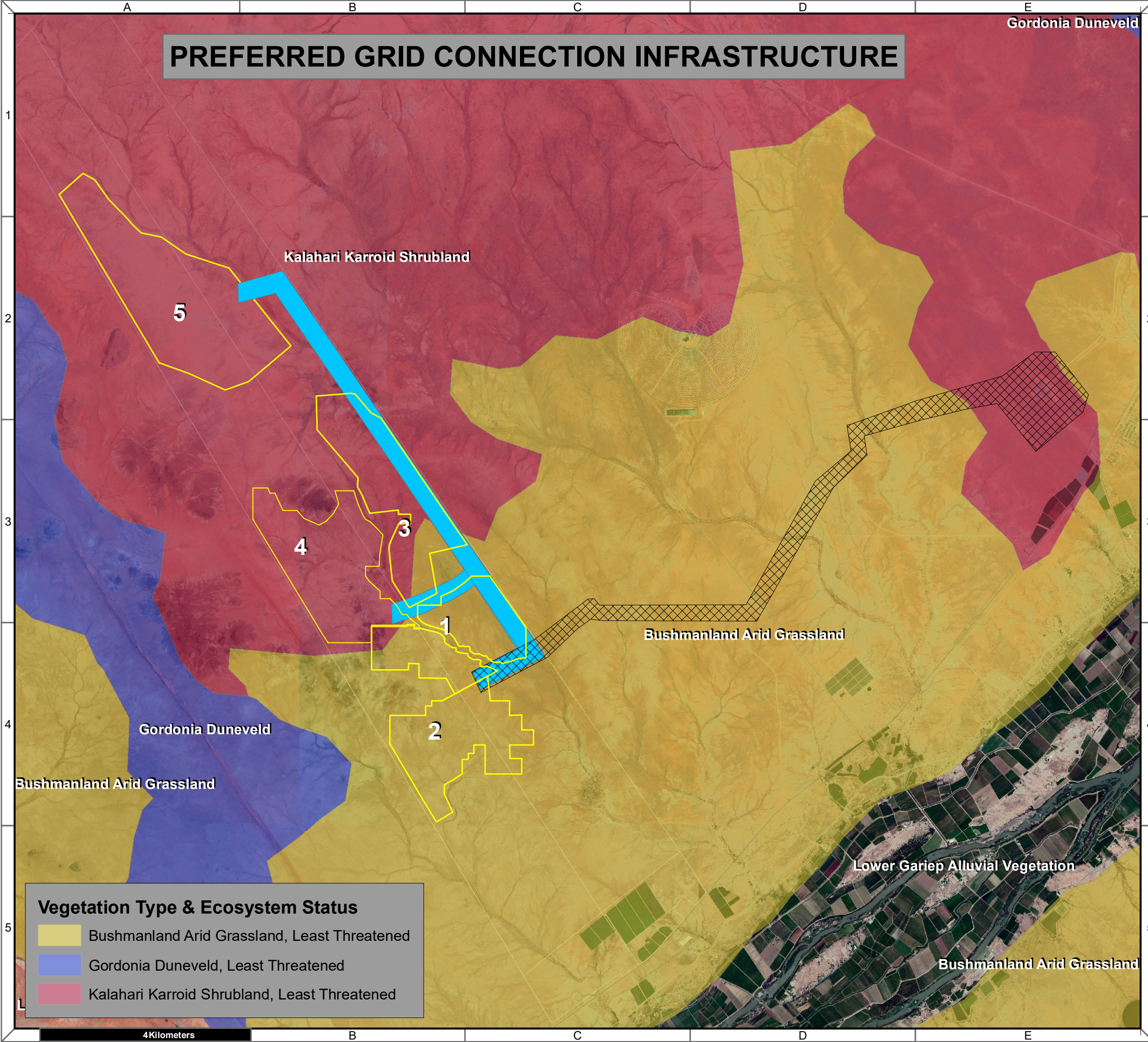


PREFERRED GRID CONNECTION INFRASTRUCTURE



Bloemsmond Grid Connection Infrastructure

Legend

Bloemsmond Solar Projects

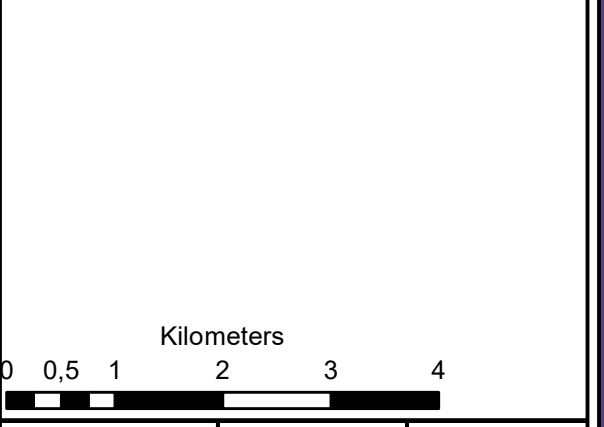
Grid Connection Corridors

Collector to Upington MTS

On-site to Collector

Notes

- Map Scale is 1: 60 000 when printed on A3
- Imagery date 2009
- Biodiversity data courtesy of SANBI BGIS 2019



Map Drawn By:	Date	Reference
Melissa Mackay	2019/10/10	KAI582

Cape Environmental Assessment Practitioners (Pty) Ltd
 Reg. No. 2008/042707

Telephone: +27 44 874 0365
 Facsimile: +27 44 874 0432
 Web: www.cape-eaprac.co.za

17 Progress St
 PO Box 2070
 George 6530

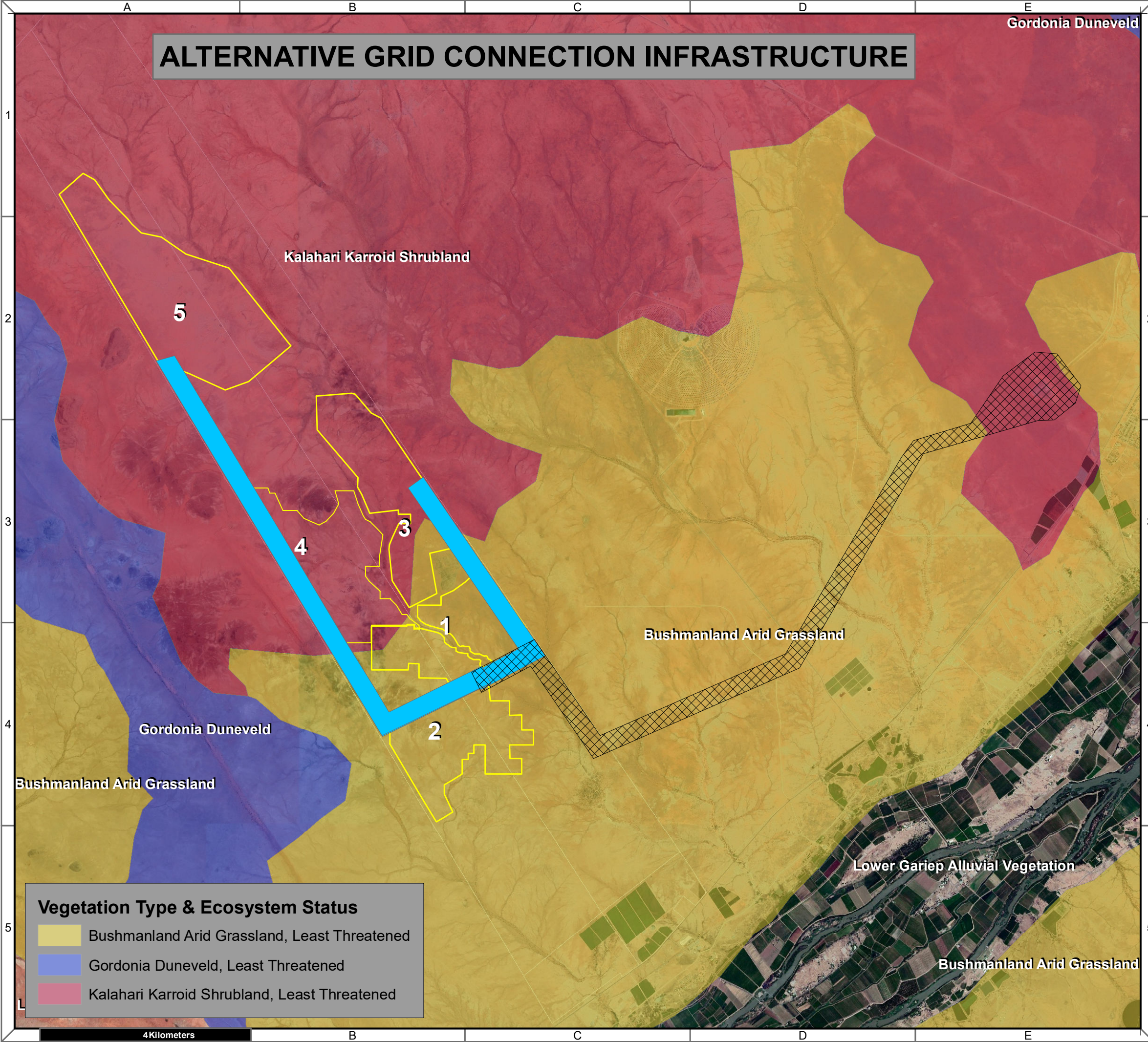
VEGETATION TYPE & ECOSYSTEM STATUS

Vegetation Type & Ecosystem Status

- Bushmanland Arid Grassland, Least Threatened
- Gordonia Duneveld, Least Threatened
- Kalahari Karroid Shrubland, Least Threatened

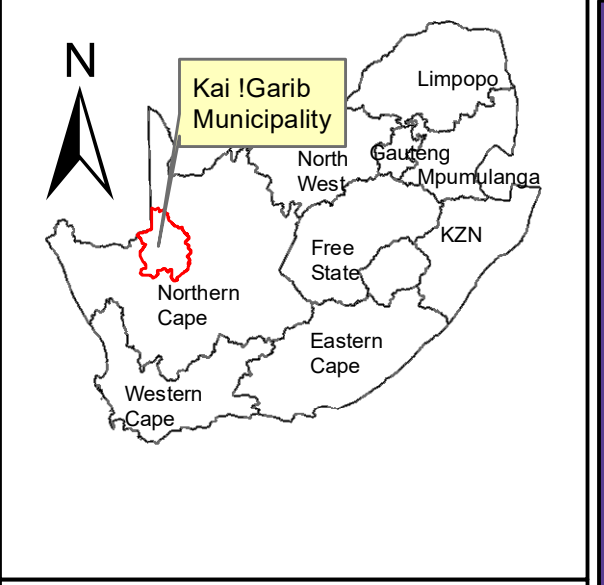
4 Kilometers

ALTERNATIVE GRID CONNECTION INFRASTRUCTURE



Vegetation Type & Ecosystem Status

- Bushmanland Arid Grassland, Least Threatened
- Gordonia Duneveld, Least Threatened
- Kalahari Karroid Shrubland, Least Threatened



Bloemsmond Grid Connection Infrastructure

Legend

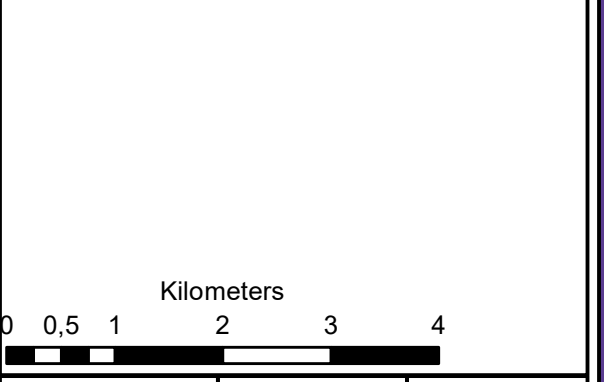
Bloemsmond Solar Projects

Grid Connection Corridors

- On-site to Collector
- Collector to Upington MTS

Notes

- Map Scale is 1: 60 000 when printed on A3
- Imagery date 2009
- Biodiversity data courtesy of SANBI BGIS 2019



Cape Environmental Assessment Practitioners (Pty) Ltd

Reg. No. 2008/042707

Telephone: +27 44 874 0365
 Facsimile: +27 44 874 0432
 Web: www.cape-eaprac.co.za

17 Progress St
 PO Box 2070
 George 6530

VEGETATION TYPE & ECOSYSTEM STATUS