

**Duneveld PV  
Farm 456 Geelkop**

**Legend**

- Farm\_456
- Duneveld PV
- Grid Connection
- Duneveld PV
- Grid Corridor
- Corridor\_properties

**Rivers**

- PERENNIAL CENTER LINE
- NON-PERENNIAL CENTER LINE

**Notes**

- Map Scale is 1: 15 000 when printed on A3
- Aerial image courtesy of Google Earth Pro 2020
- Imagery date December 2018

Kilometers

0 0,125 0,25 0,5 0,75 1

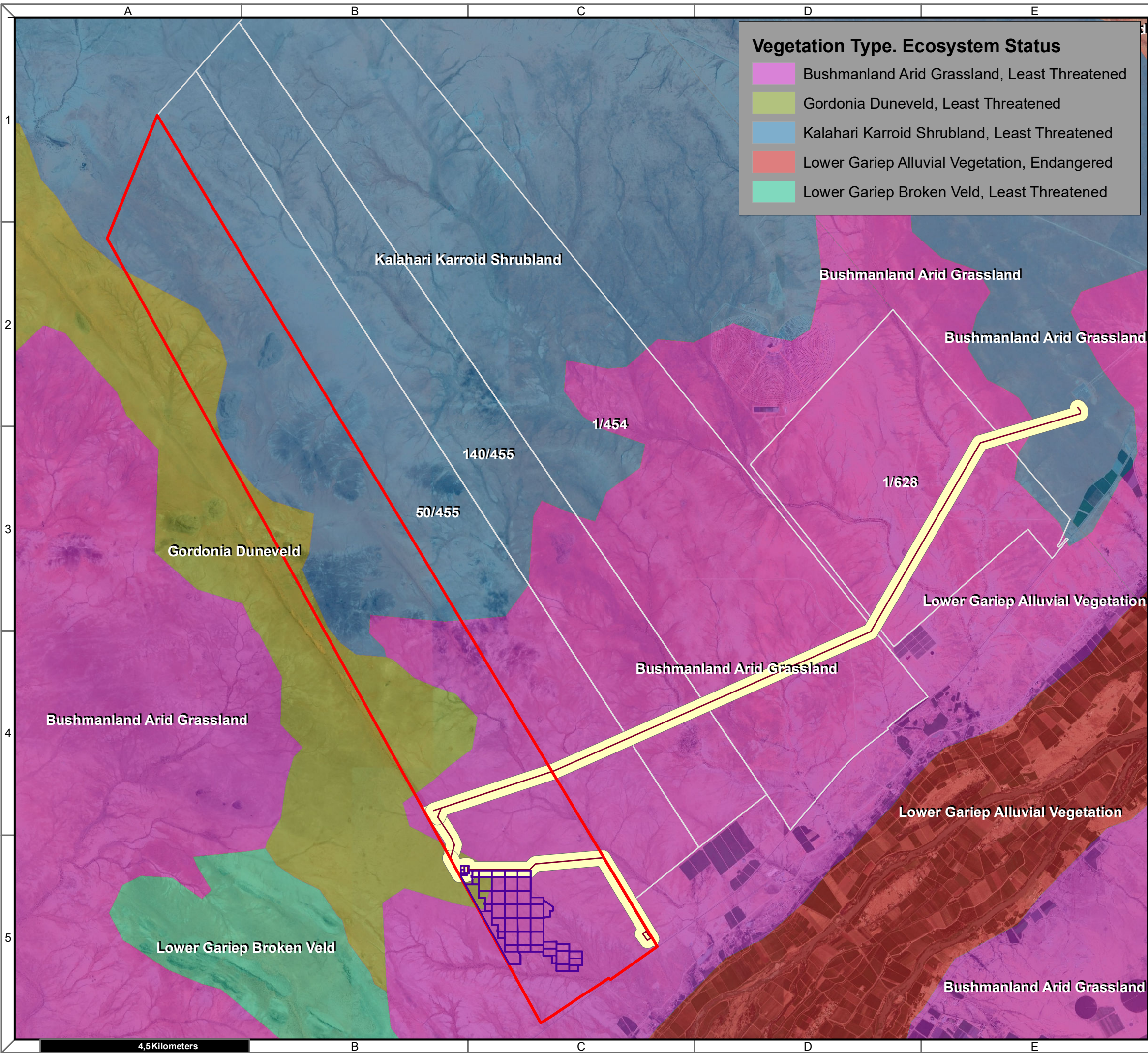
Map Drawn By:	Date	Reference
Melissa Mackay	2020/05/05	KAI632

**Cape Environmental Assessment Practitioners (Pty) Ltd**  
Reg. No. 2008/004627/07

Telephone: +27 44 874 0365  
 Facsimile: +27 44 874 0432  
 Web: www.cape-eaprac.co.za

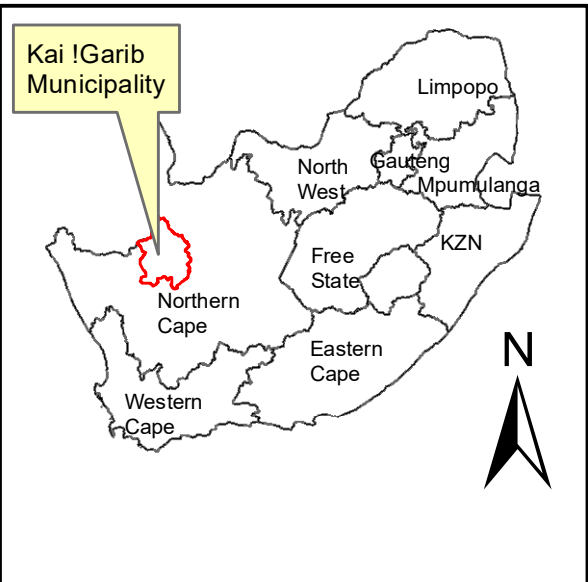
17 Progress St  
 PO Box 2070  
 George 6530

0,9 Kilometers



**Vegetation Type. Ecosystem Status**

- Bushmanland Arid Grassland, Least Threatened
- Gordonia Duneveld, Least Threatened
- Kalahari Karroid Shrubland, Least Threatened
- Lower Gariep Alluvial Vegetation, Endangered
- Lower Gariep Broken Veld, Least Threatened



**Duneveld PV  
Farm 456 Geelkop**

**Legend**

- Farm\_456
- Duneveld PV
- Grid Connection
- Grid Corridor
- Corridor\_properties

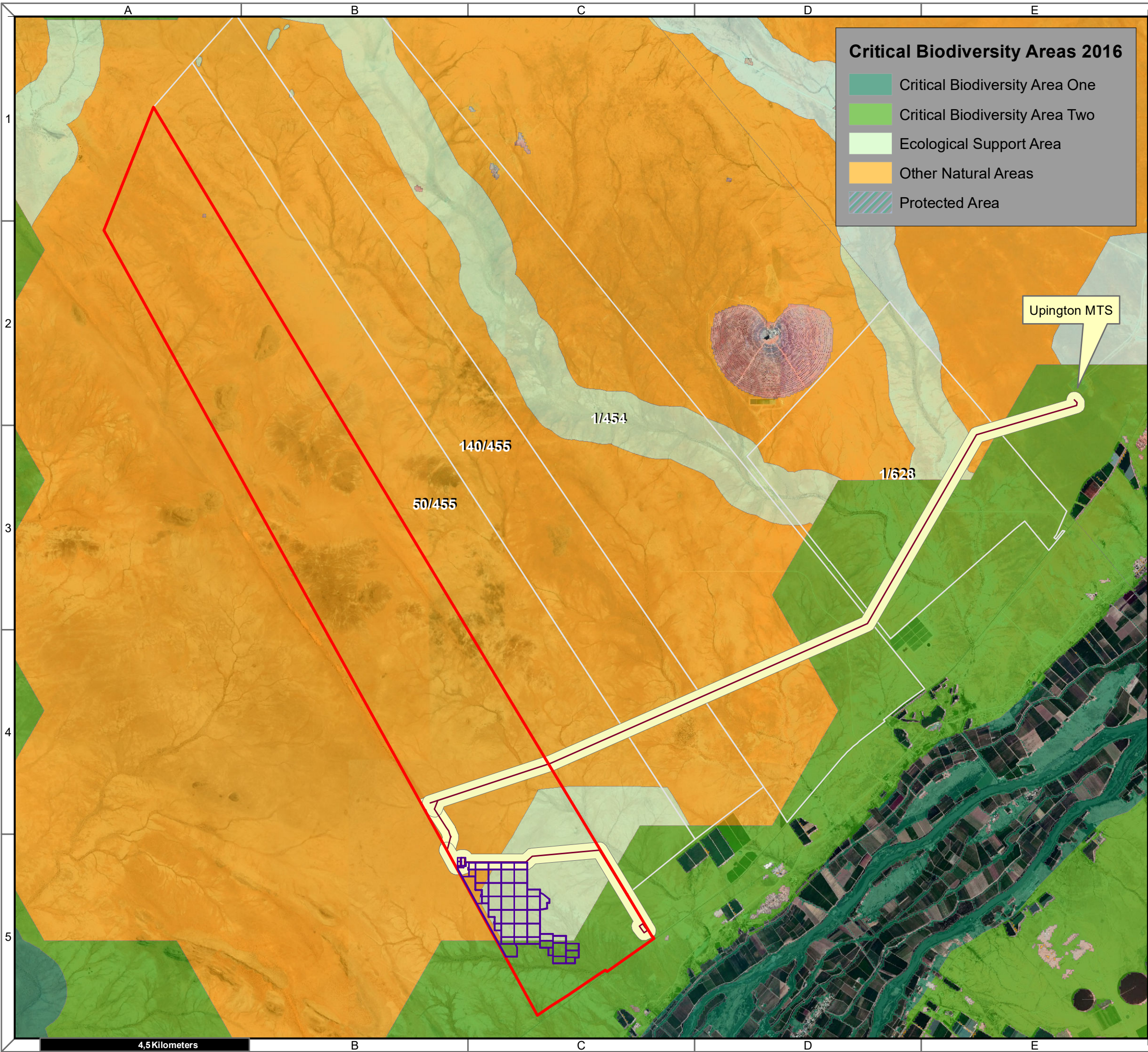
**Notes**

- Map Scale is 1: 80 000 when printed on A3
- Imagery date 2009
- Biodiversity data courtesy of SANBI BGIS 2019



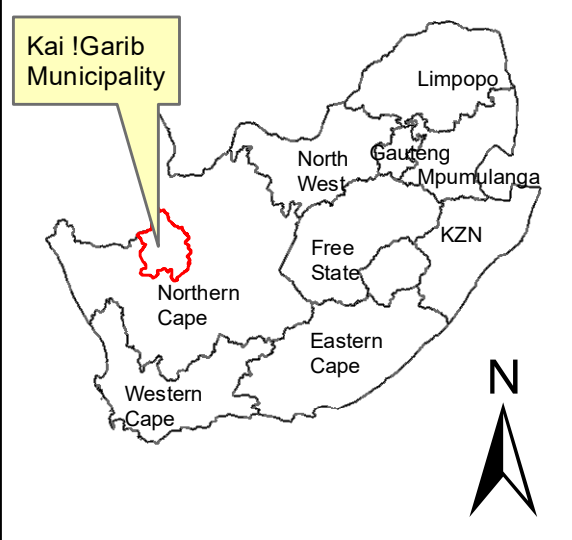
Map Drawn By:	Date	Reference
Melissa Mackay	2020/04/01	KAI632

**Cape Environmental Assessment Practitioners (Pty) Ltd**  
 Telephone: +27 44 874 0365  
 Facsimile: +27 44 874 0432  
 Web: www.cape-eaprac.co.za  
 17 Progress St  
 PO Box 2070  
 George 6530



**Critical Biodiversity Areas 2016**

- Critical Biodiversity Area One
- Critical Biodiversity Area Two
- Ecological Support Area
- Other Natural Areas
- Protected Area



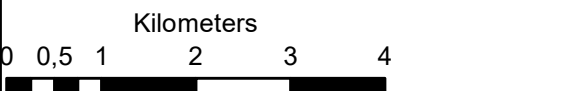
**Duneveld PV  
Farm 456 Geelkop**

**Legend**

- Farm\_456
- Duneveld PV
- Grid Connection
- Grid Corridor
- Corridor\_properties

**Notes**

- Map Scale is 1: 80 000 when printed on A3
- Imagery date 2009
- Biodiversity data courtesy of SANBI BGIS 2019



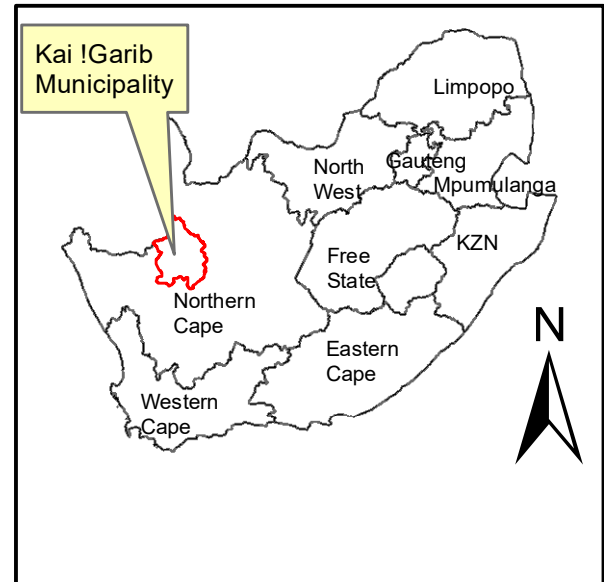
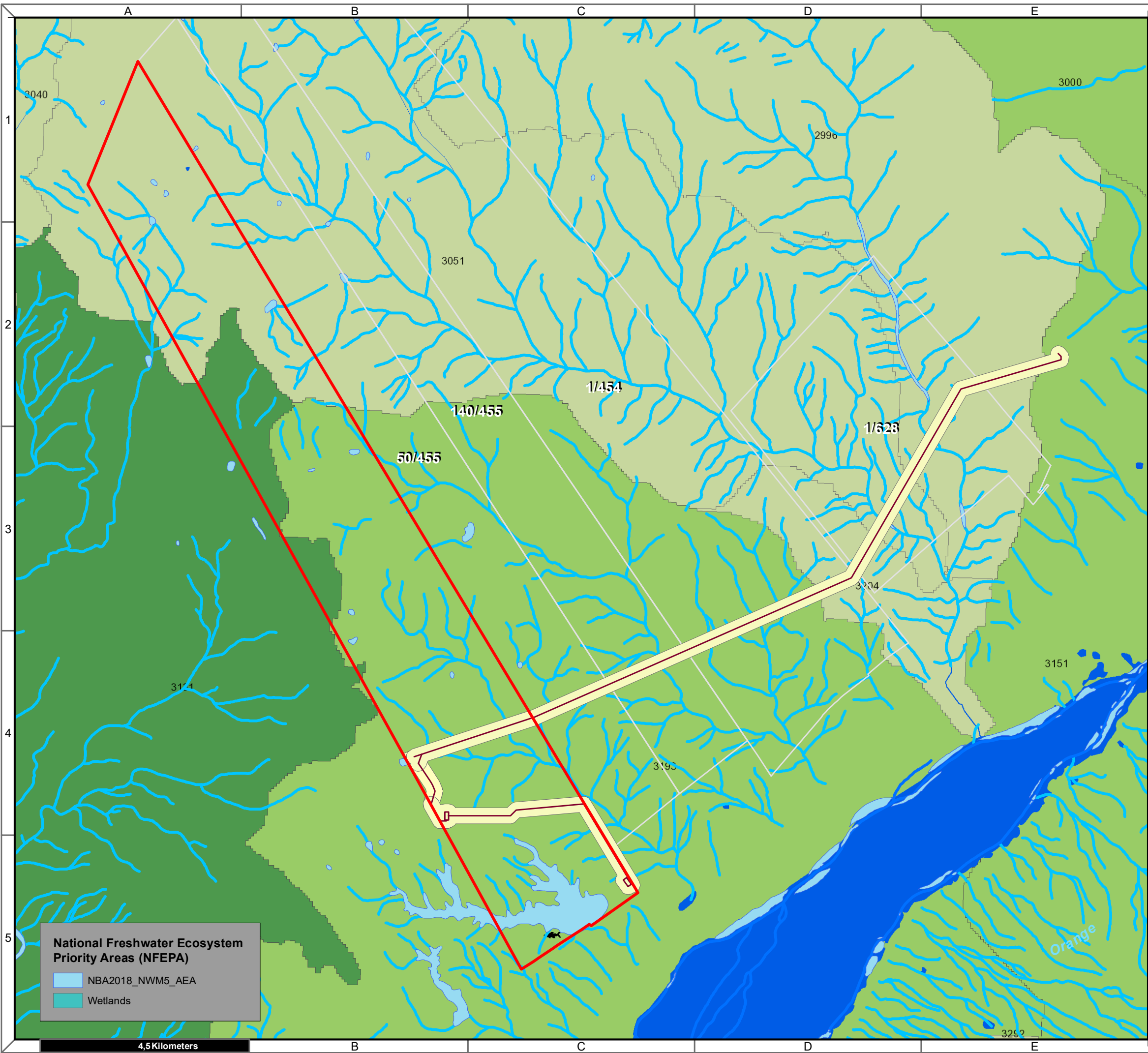
Map Drawn By:	Date	Reference
Melissa Mackay	2020/04/01	KAI632

**Cape Environmental Assessment Practitioners (Pty) Ltd**  
 Telephone: +27 44 874 0365  
 Facsimile: +27 44 874 0432  
 Web: www.cape-eaprac.co.za

17 Progress St  
 PO Box 2070  
 George 6530

**CRITICAL BIODIVERSITY AREAS (CBA)**

4,5 Kilometers



**Duneveld PV  
Farm 456 Geelkop**

**Legend**

- Farm\_456
- Grid Connection
- Grid Corridor
- Corridor\_properties

**Notes**

- Map Scale is 1: 80 000 when printed on A3
- Imagery date 2009
- Biodiversity data courtesy of SANBI BGIS 2019

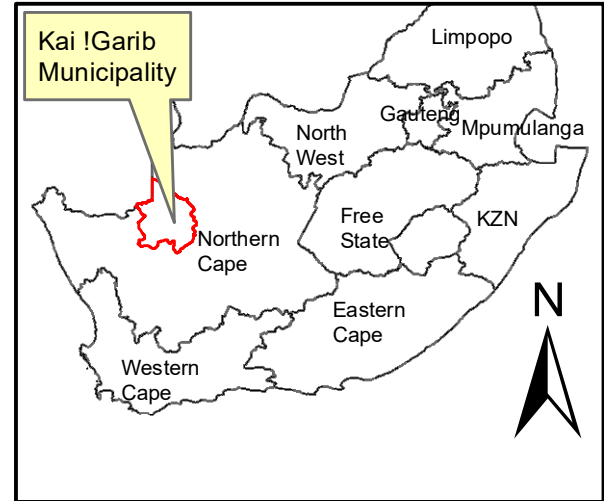
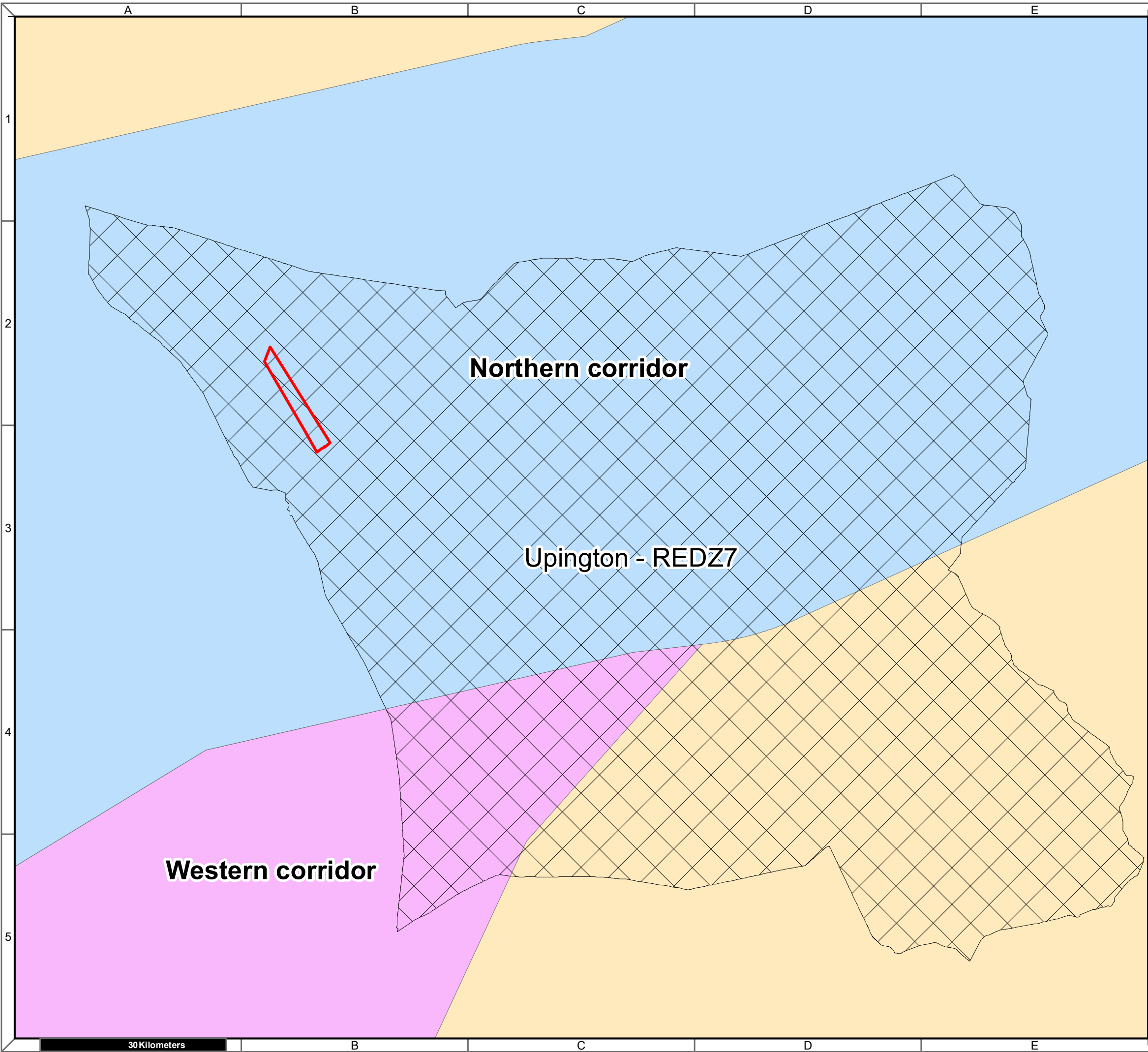


Map Drawn By:	Date	Reference
Melissa Mackay	2020/04/01	KAI632

**Cape Environmental Assessment Practitioners (Pty) Ltd**  
 Reg. No. 2008/004627/07





Telephone: +27 44 874 0365  
 Facsimile: +27 44 874 0432  
 Web: www.cape-eaprac.co.za

17 Progress St  
 PO Box 2070  
 George 6530



**Duneveld PV  
Farm 456 Geelkop**

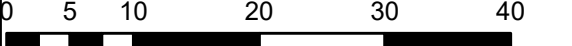
**Legend**

-  Farm\_456
- REDZ**
-  Upington - REDZ7
- Power\_corridors**
- Corridor**
-  Northern corridor
-  Western corridor

**Notes**

- Map Scale is 1: 600 000 when printed on A3
- REDZ data as per DEA unpublished 2015

Kilometers



Map Drawn By:	Date	Reference
Melissa Mackay	2020/03/30	KAI632