

**Gordonia Solar PV
Farm 456 Geelkop**

Legend

- Farm_456
- Gordonia Solar PV
- Grid Connection
- Grid Corridor
- ARTERIAL ROUTE
- MAIN ROAD
- SECONDARY ROAD
- Perennial River
- Non-Perennial River

Specialist Sensitivities

Aquatic

- Very High with 48m buffer
- Very High
- Moderate

Ecology

- High
- Medium - High
- Medium

Avifaunal

- High

Notes

- Map Scale is 1: 15 000 when printed on A3
- Aerial image courtesy of Google Earth Pro 2020
- Imagery date December 2018

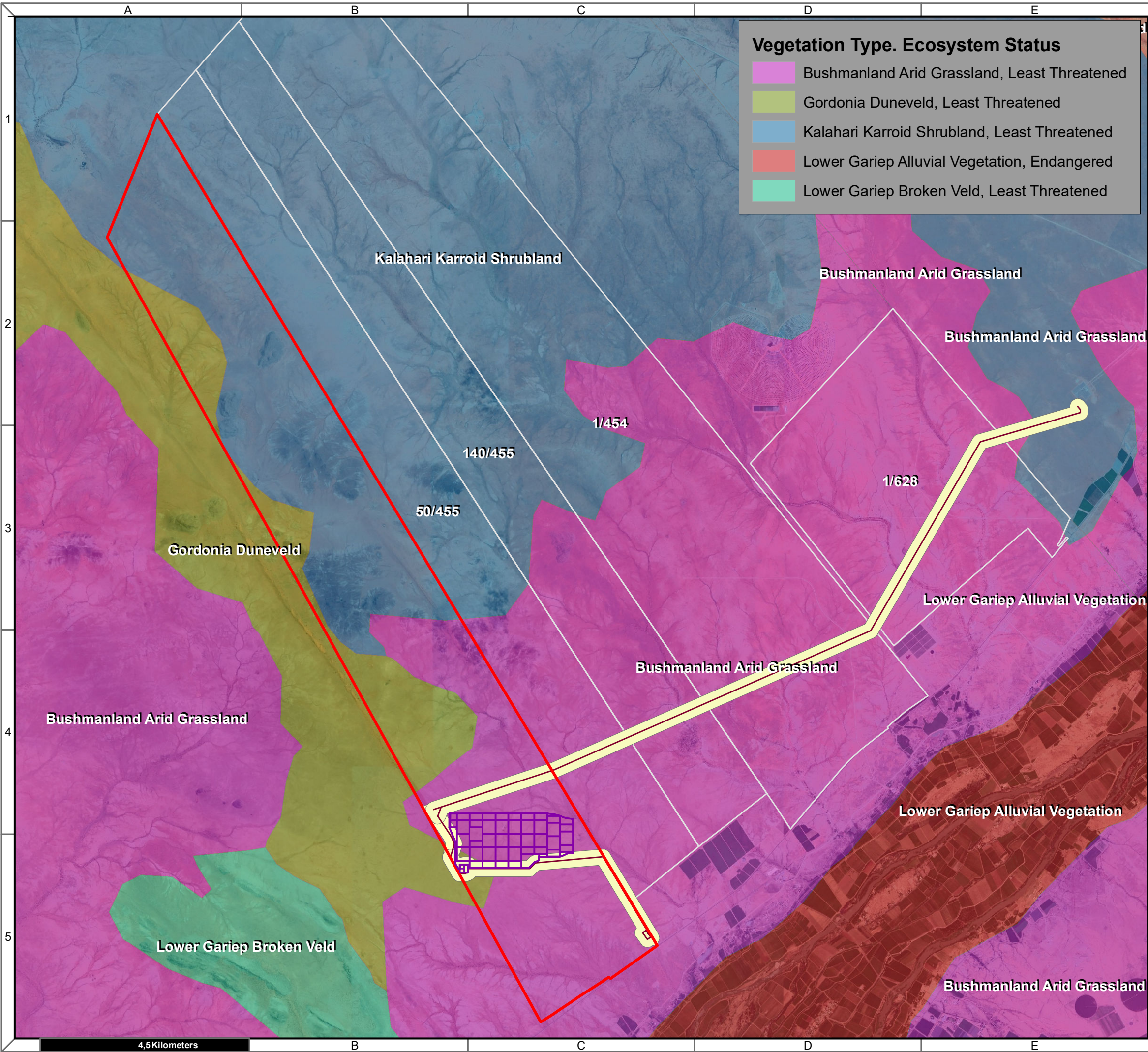
Kilometers

0 0,125 0,25 0,5 0,75 1

Map Drawn By:	Date	Reference
Melissa Mackay	2020/05/05	KAI632

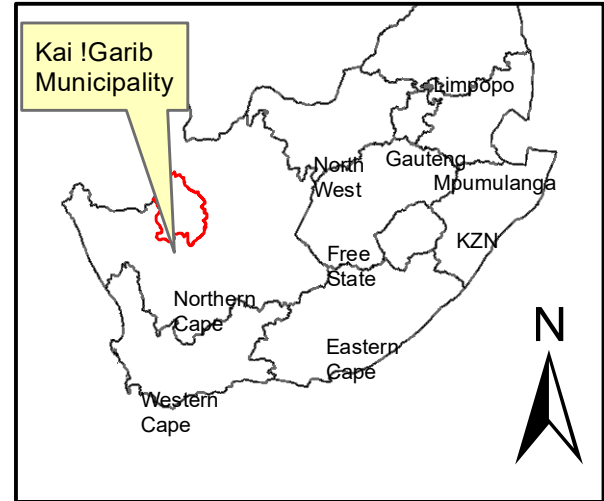
Cape Environmental Assessment Practitioners (Pty) Ltd
 Telephone: +27 44 874 0365
 Facsimile: +27 44 874 0432
 Web: www.cape-eaprac.co.za

17 Progress St
 PO Box 2070
 George 6530



Vegetation Type. Ecosystem Status

- Bushmanland Arid Grassland, Least Threatened
- Gordonia Duneveld, Least Threatened
- Kalahari Karroid Shrubland, Least Threatened
- Lower Gariep Alluvial Vegetation, Endangered
- Lower Gariep Broken Veld, Least Threatened



**Gordonia Solar PV
Farm 456 Geelkop**

Legend

- Farm_456
- Gordonia Solar PV
- Grid Connection
- Grid Corridor
- Corridor_properties

Notes

- Map Scale is 1: 80 000 when printed on A3
- Imagery date 2009
- Biodiversity data courtesy of SANBI BGIS 2019

Kilometers

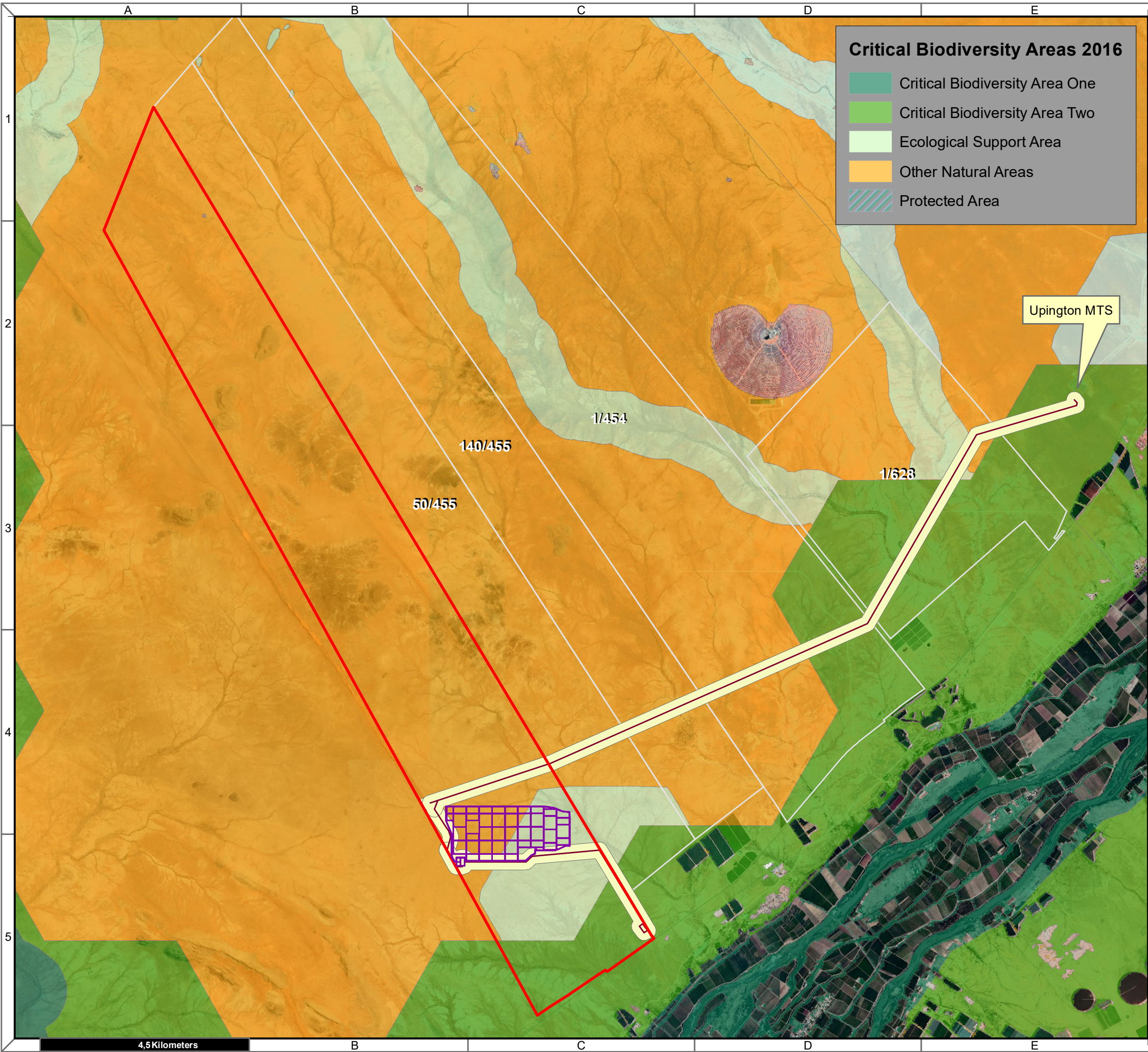
Map Drawn By:	Date	Reference
Melissa Mackay	2020/04/01	KAI632

Cape Environmental Assessment Practitioners (Pty) Ltd
 Telephone: +27 44 874 0365
 Facsimile: +27 44 874 0432
 Web: www.cape-eaprac.co.za

17 Progress St
 PO Box 2070
 George 6530

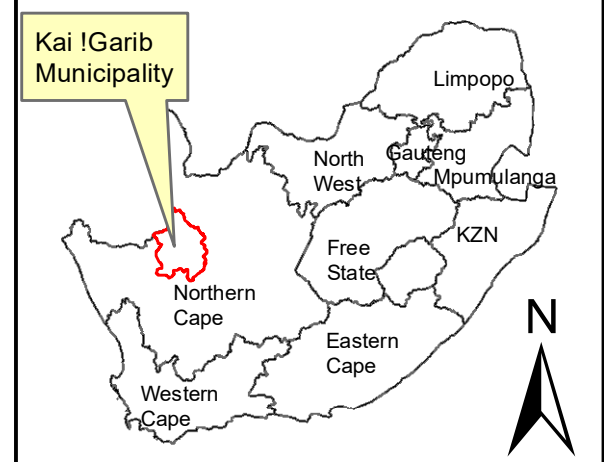
VEGETATION TYPE & ECOSYSTEM STATUS

4,5 Kilometers



Critical Biodiversity Areas 2016

- Critical Biodiversity Area One
- Critical Biodiversity Area Two
- Ecological Support Area
- Other Natural Areas
- Protected Area



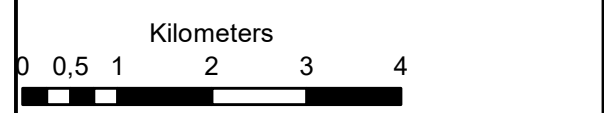
Gordonia Solar PV Farm 456 Geelkop

Legend

- Farm_456
- Gordonia Solar PV
- Grid Connection
- Grid Corridor
- Corridor_properties

Notes

- Map Scale is 1: 80 000 when printed on A3
- Imagery date 2009
- Biodiversity data courtesy of SANBI BGIS 2019

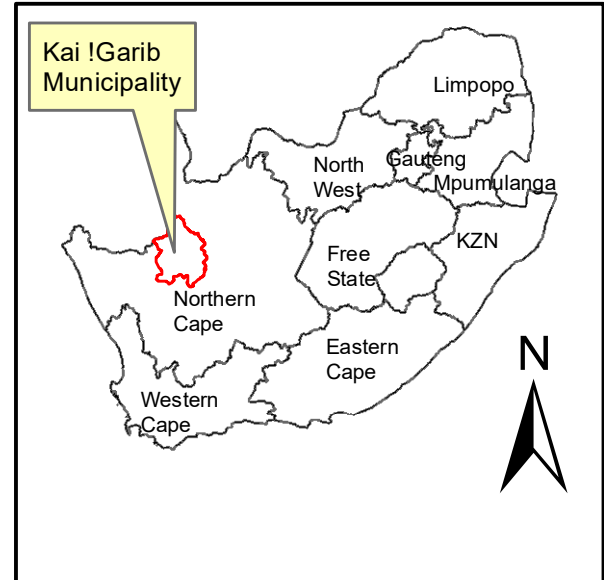
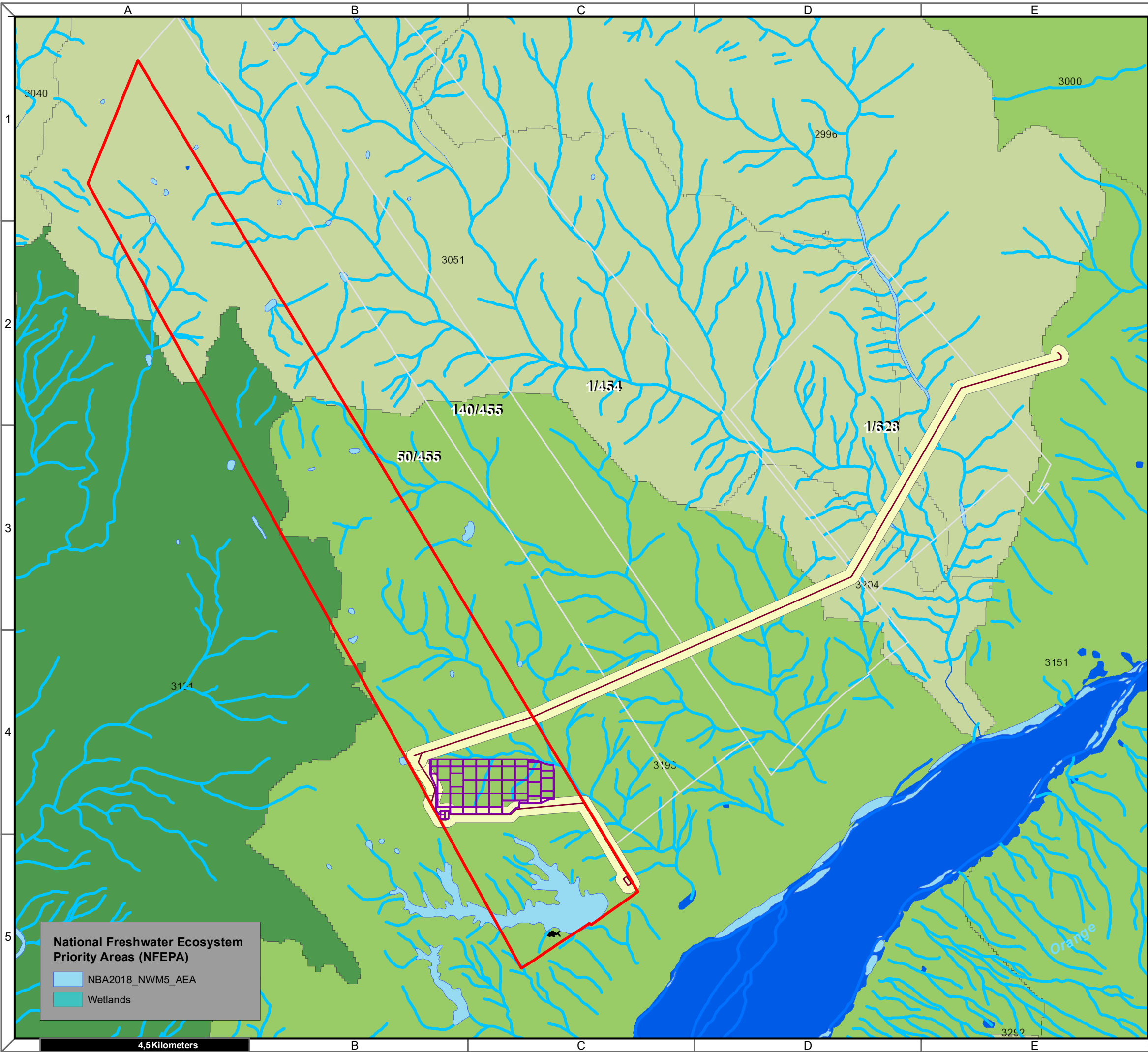


Map Drawn By:	Date	Reference
Melissa Mackay	2020/04/01	KAI632

Cape Environmental Assessment Practitioners (Pty) Ltd
 Reg. No. 2008/004627/07
 Telephone: +27 44 874 0365
 Facsimile: +27 44 874 0432
 Web: www.cape-eaprac.co.za
 17 Progress St
 PO Box 2070
 George 6530




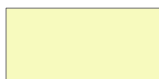

CRITICAL BIODIVERSITY AREAS (CBA)

4,5 Kilometers



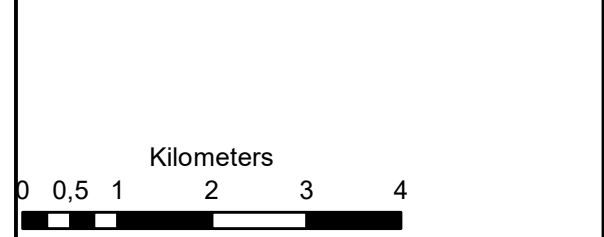
Gordonia Solar PV Farm 456 Geelkop

Legend

-  Farm_456
-  Gordonia Solar PV
-  Grid Connection
-  Grid Corridor
-  Corridor_properties

Notes

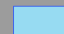
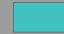
- Map Scale is 1: 80 000 when printed on A3
- Biodiversity data courtesy of SANBI BGIS 2019

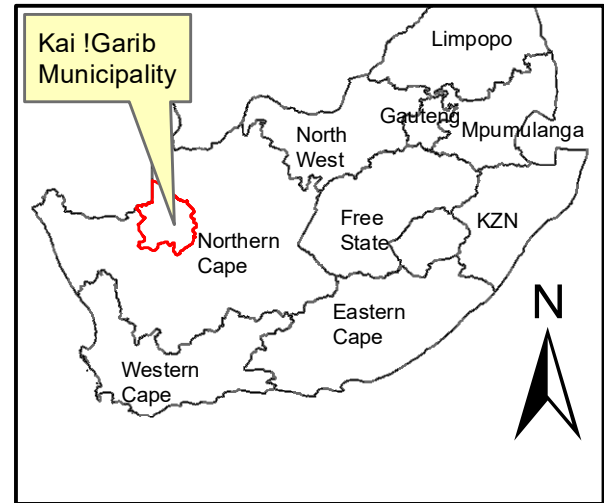
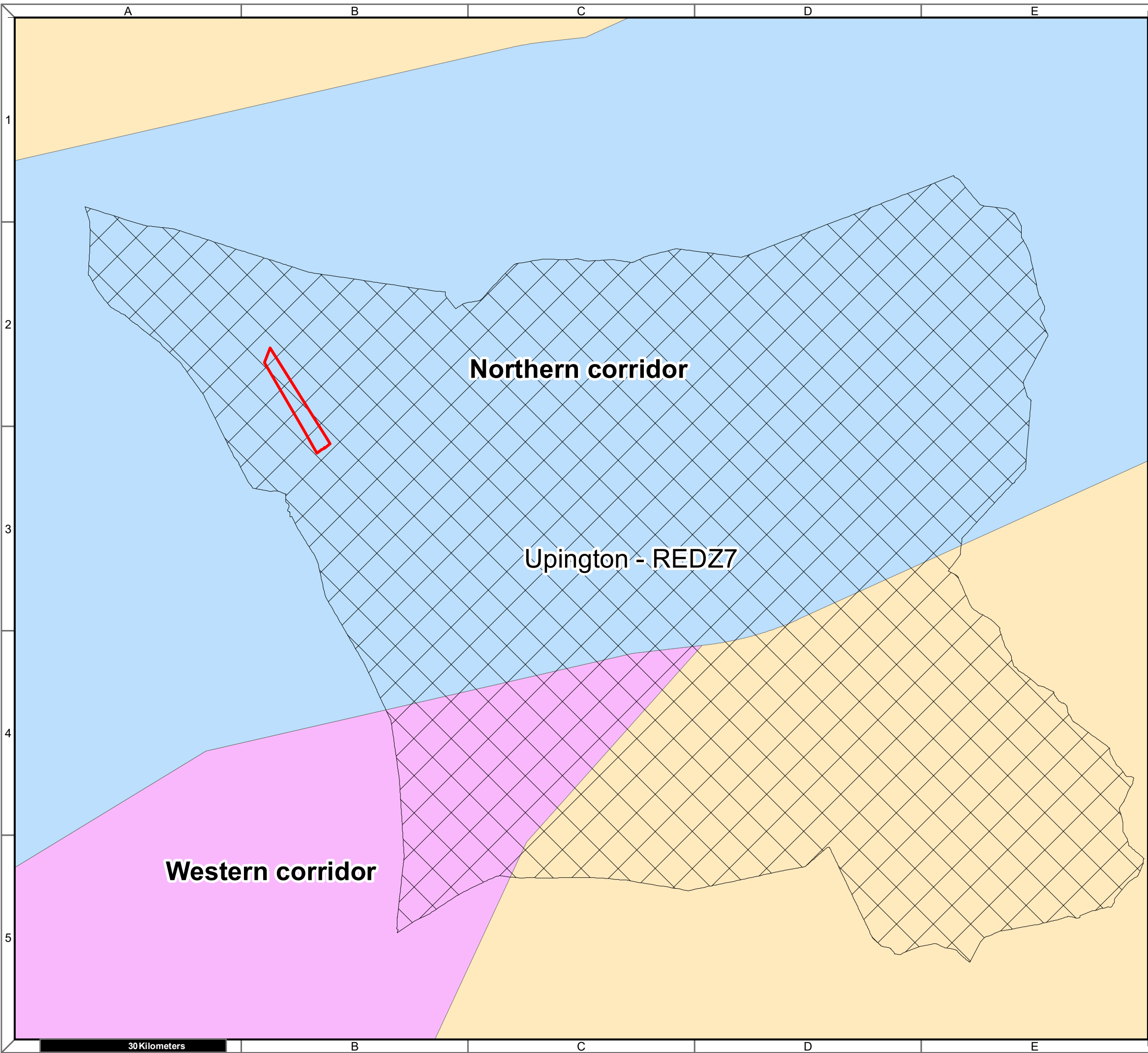


Map Drawn By:	Date	Reference
Melissa Mackay	2020/04/01	KAI632

Cape Environmental Assessment Practitioners (Pty) Ltd
 Reg. No. 2008/004627/07
 Telephone: +27 44 874 0365
 Facsimile: +27 44 874 0432
 Web: www.cape-eaprac.co.za
 17 Progress St
 PO Box 2070
 George 6530

National Freshwater Ecosystem Priority Areas (NFEPA)

-  NBA2018_NWM5_AEA
-  Wetlands



Gordonia Solar PV Farm 456 Geelkop

Legend

- Farm_456
- REDZ**
- Upington - REDZ7
- Power_corridors**
- Corridor**
- Northern corridor
- Western corridor

Notes

- Map Scale is 1: 600 000 when printed on A3
- REDZ data as per DEA unpublished 2015

Kilometers

Map Drawn By:	Date	Reference
Melissa Mackay	2020/03/30	KAI632

Cape Environmental Assessment Practitioners (Pty) Ltd
Reg. No. 2008/004627/07

Telephone: +27 44 874 0365
 Facsimile: +27 44 874 0432
 Web: www.cape-eaprac.co.za

17 Progress St
 PO Box 2070
 George 6530