

Specialist Sensitivities

Aquatic

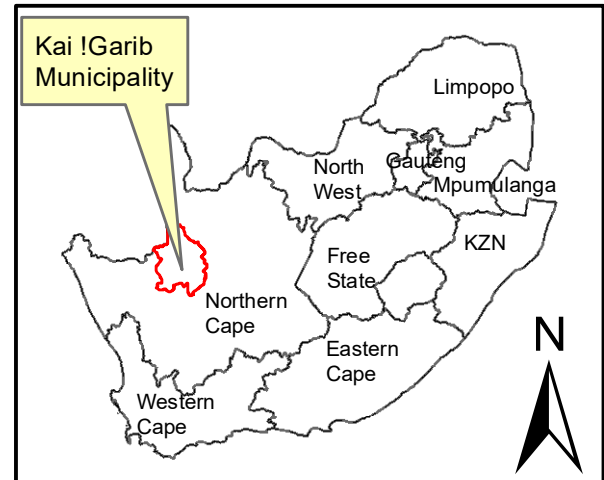
- Very High with 48m buffer
- Very High
- Moderate

Ecology

- High
- Medium - High
- Medium

Avifaunal

- High



Karroid PV Farm 456 Geelkop

Legend

- Farm_456
- Grid_Connection_5
- Karroid PV
- Grid_Corridor_5
- ARTERIAL ROUTE
- MAIN ROAD
- SECONDARY ROAD
- Perennial River
- Non-Perennial River

Notes

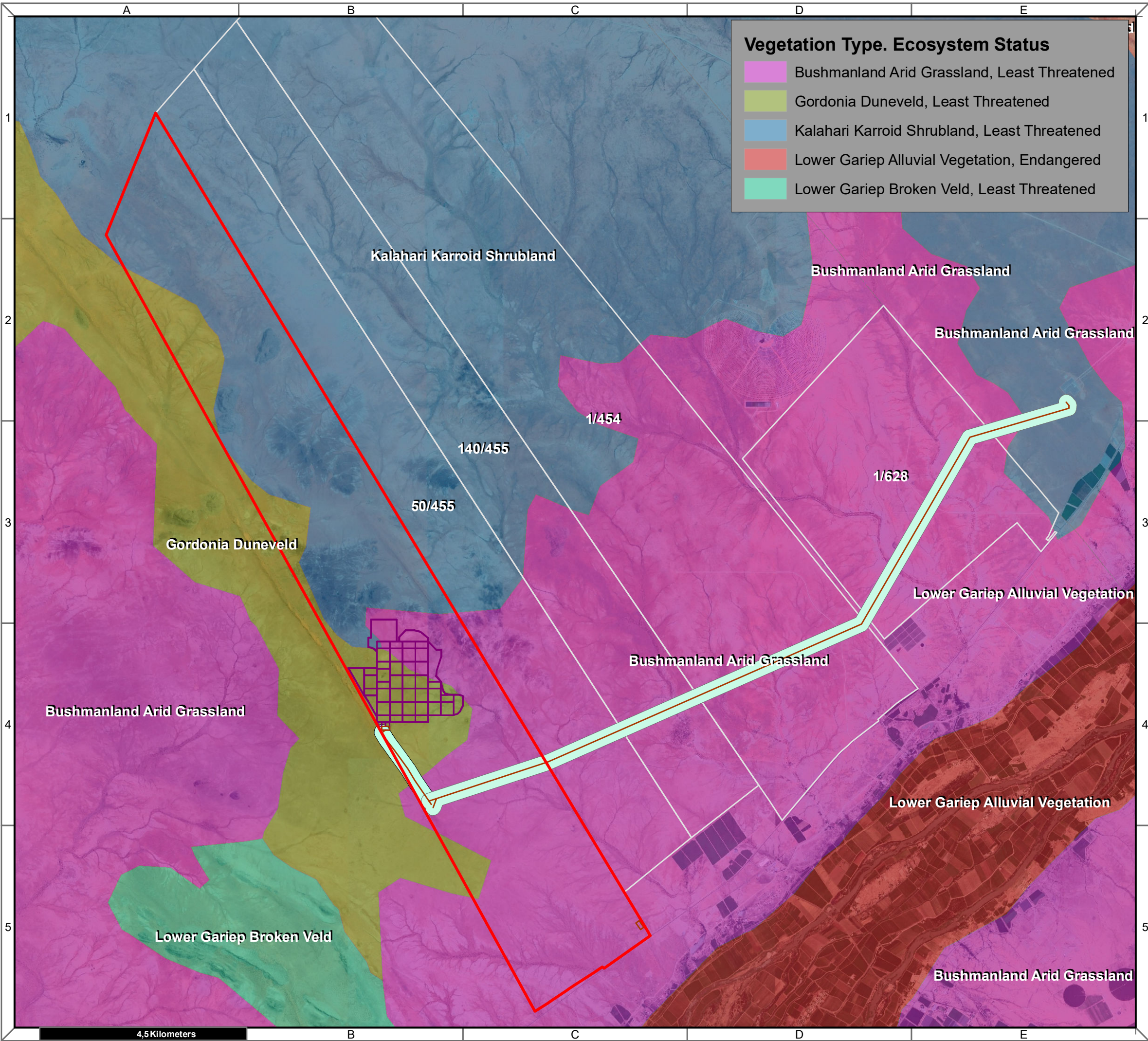
- Map Scale is 1: 15 000 when printed on A3
- Aerial image courtesy of Google Earth Pro 2020
- Imagery date December 2018

Kilometers
0 0,125 0,25 0,5 0,75 1

Map Drawn By:	Date	Reference
Melissa Mackay	2020/05/05	KAI632

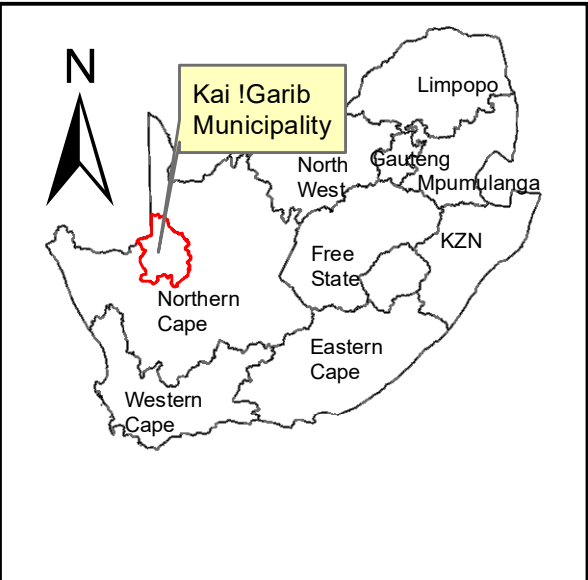
Cape Environmental Assessment Practitioners (Pty) Ltd
 Telephone: +27 44 874 0365
 Facsimile: +27 44 874 0432
 Web: www.cape-eaprac.co.za

17 Progress St
 PO Box 2070
 George 6530



Vegetation Type. Ecosystem Status

- Bushmanland Arid Grassland, Least Threatened
- Gordonia Duneveld, Least Threatened
- Kalahari Karroid Shrubland, Least Threatened
- Lower Gariep Alluvial Vegetation, Endangered
- Lower Gariep Broken Veld, Least Threatened



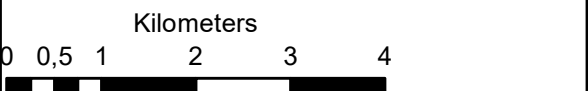
**Karroid PV
Farm 456 Geelkop**

Legend

- Farm_456
- Grid_Connection_5
- Karroid PV
- Grid_Corridor_5
- Corridor_properties

Notes

- Map Scale is 1: 80 000 when printed on A3
- Biodiversity data courtesy of SANBI BGIS 2019

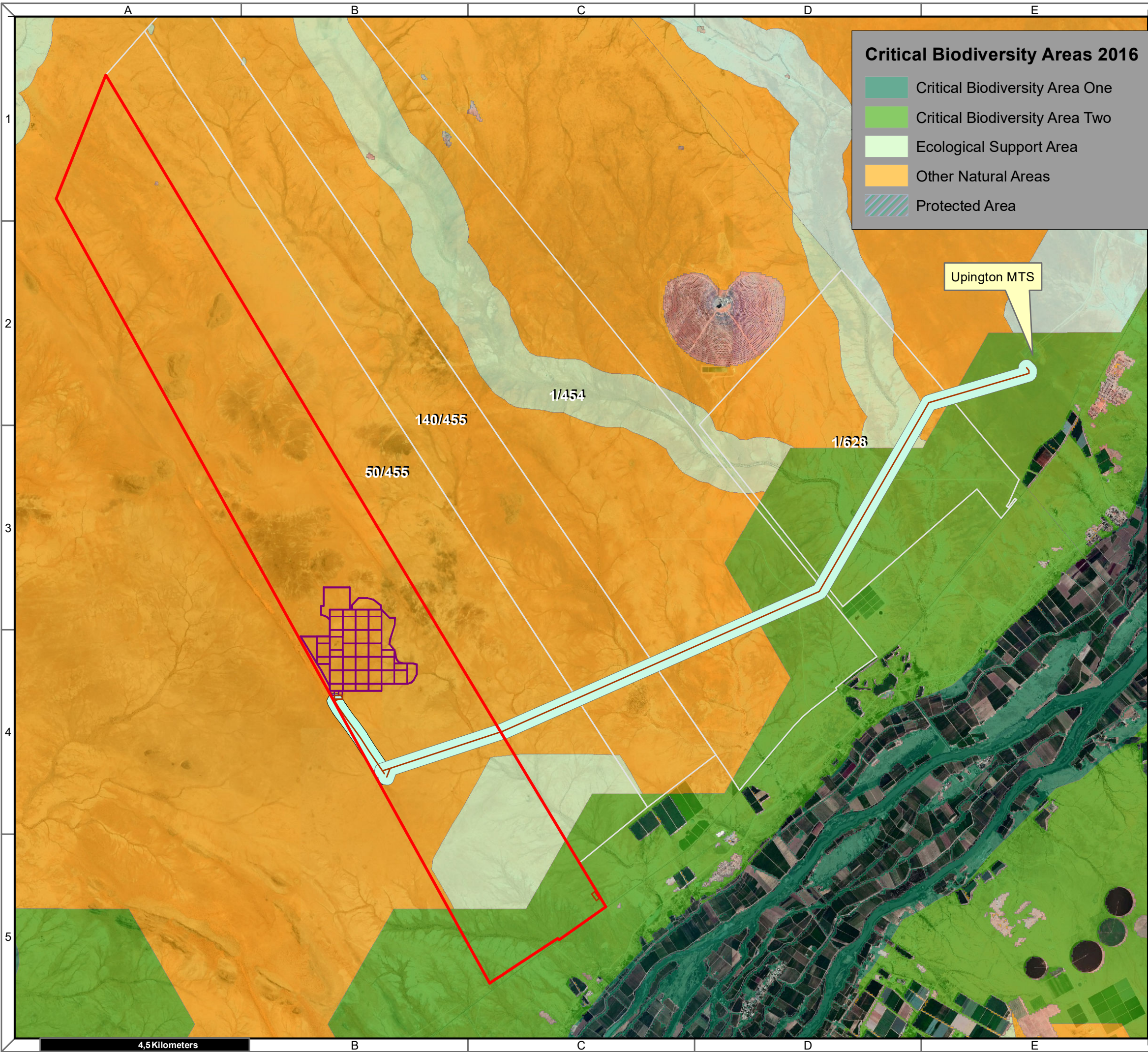


Map Drawn By:	Date	Reference
Melissa Mackay	2020/04/01	KAI632

Cape Environmental Assessment Practitioners (Pty) Ltd
 Telephone: +27 44 874 0365
 Facsimile: +27 44 874 0432
 Web: www.cape-eaprac.co.za

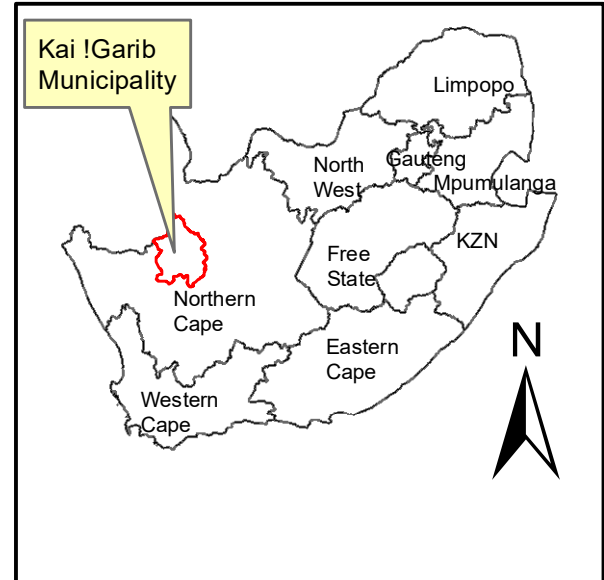
17 Progress St
 PO Box 2070
 George 6530

VEGETATION TYPE & ECOSYSTEM STATUS



Critical Biodiversity Areas 2016

- Critical Biodiversity Area One
- Critical Biodiversity Area Two
- Ecological Support Area
- Other Natural Areas
- Protected Area



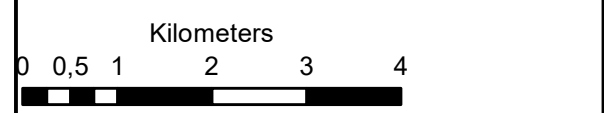
**Karroid PV
Farm 456 Geelkop**

Legend

- Farm_456
- Grid_Connection_5
- Karroid PV
- Grid_Corridor_5
- Corridor_properties

Notes

- Map Scale is 1: 80 000 when printed on A3
- Imagery date 2009
- Biodiversity data courtesy of SANBI BGIS 2019

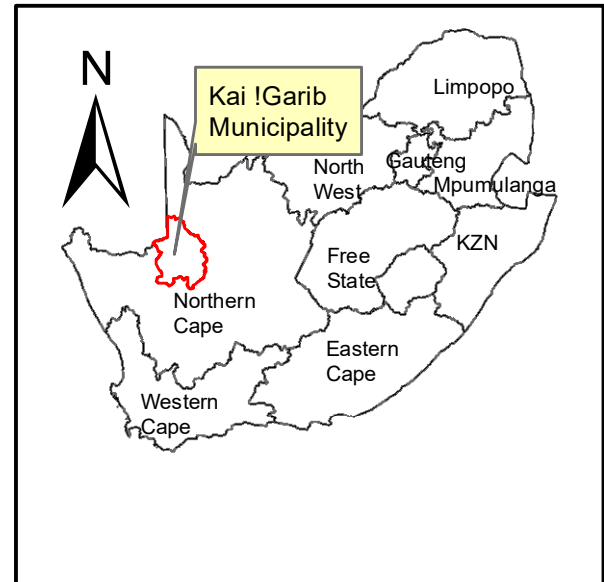
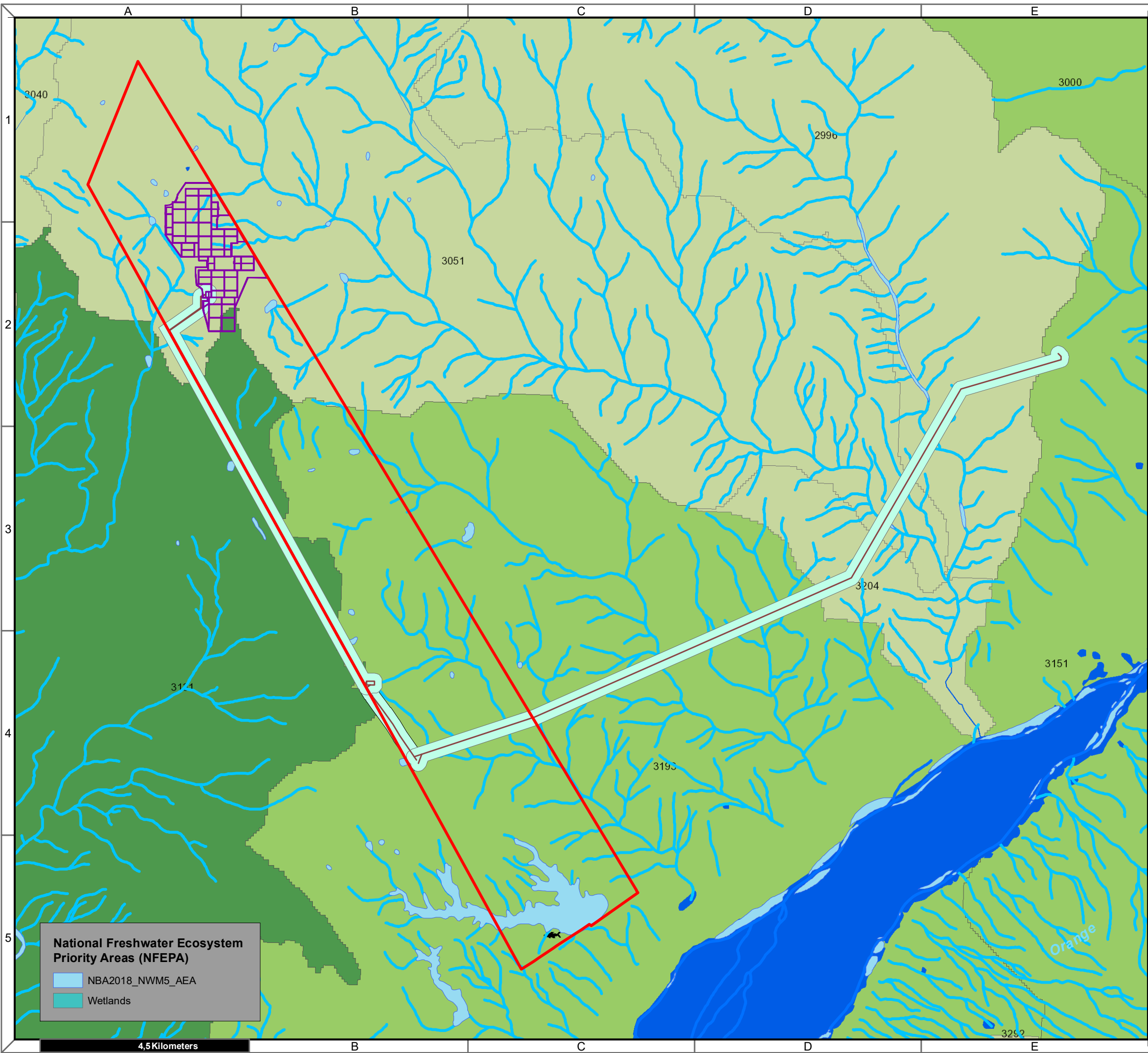


Map Drawn By:	Date	Reference
Melissa Mackay	2020/04/01	KAI632

Cape Environmental Assessment Practitioners (Pty) Ltd
 Telephone: +27 44 874 0365
 Facsimile: +27 44 874 0432
 Web: www.cape-eaprac.co.za
 17 Progress St
 PO Box 2070
 George 6530

CRITICAL BIODIVERSITY AREAS (CBA)

4,5 Kilometers



**Shrubland PV
Farm 456 Geelkop**

Legend

- Farm_456
- Shrubland PV
- Grid Connection
- Grid Corridor

Notes

- Map Scale is 1: 80 000 when printed on A3
- Imagery date 2009
- Biodiversity data courtesy of SANBI BGIS 2019

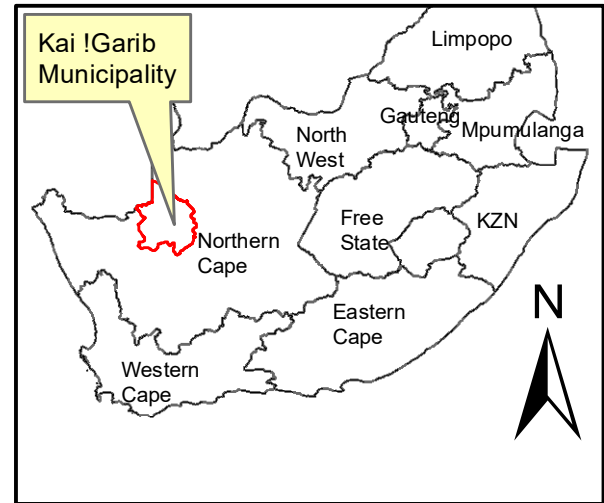
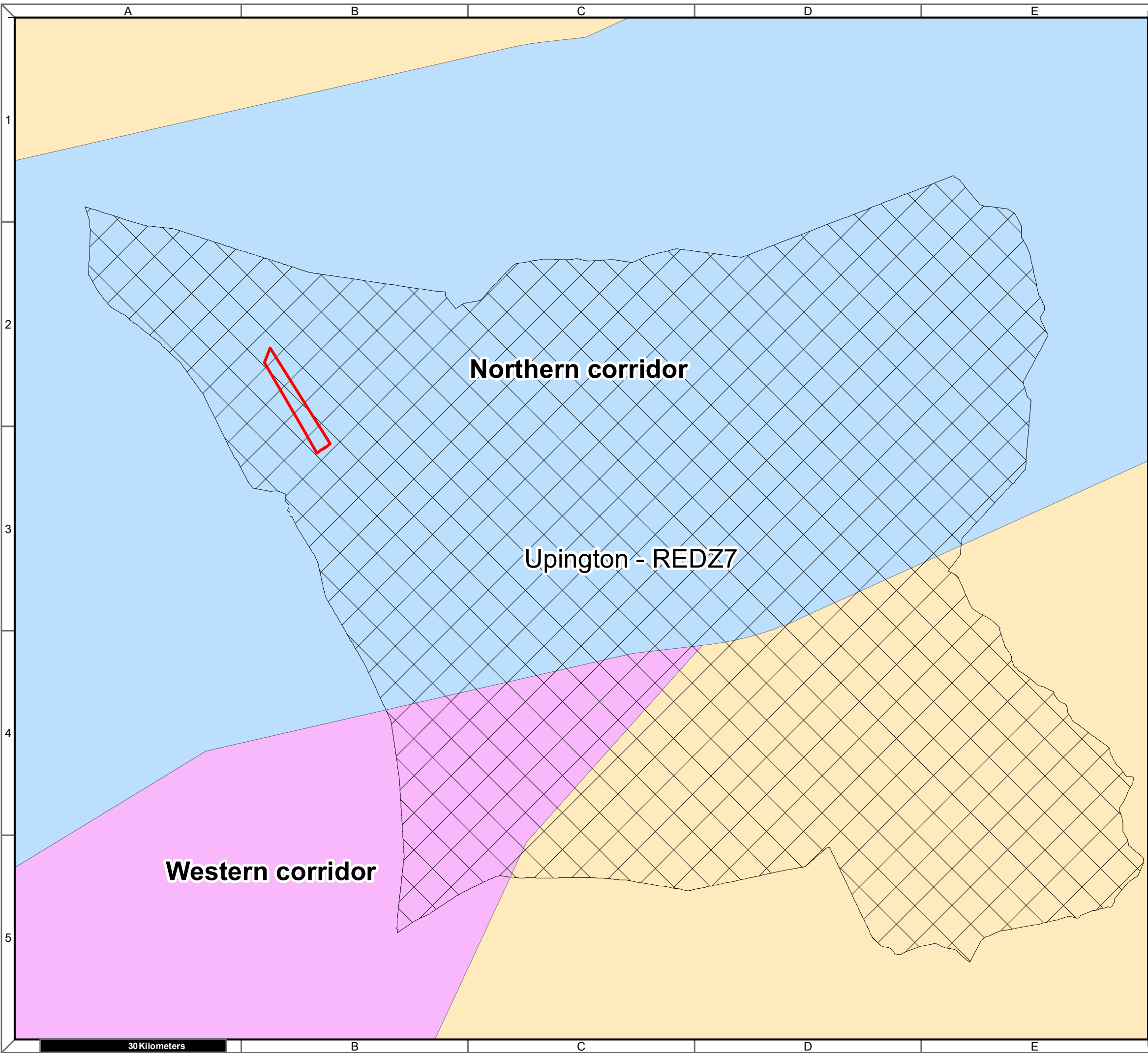
Kilometers

Map Drawn By:	Date	Reference
Melissa Mackay	2020/04/01	KAI632

Cape Environmental Assessment Practitioners (Pty) Ltd
 Reg. No. 2008/004627/07

Telephone: +27 44 874 0365
 Facsimile: +27 44 874 0432
 Web: www.cape-eaprac.co.za

17 Progress St
 PO Box 2070
 George 6530



**Karroid PV
Farm 456 Geelkop**

Legend

- Farm_456
- REDZ**
- Upington - REDZ7
- Power_corridors**
- Corridor**
- Northern corridor
- Western corridor

Notes

- Map Scale is 1: 600 000 when printed on A3
- REDZ data as per DEA unpublished 2015

Kilometers

Map Drawn By:	Date	Reference
Melissa Mackay	2020/03/31	KAI632

Cape Environmental Assessment Practitioners (Pty) Ltd
Reg. No. 2008/004627/07

Telephone: +27 44 874 0365
 Facsimile: +27 44 874 0432
 Web: www.cape-eaprac.co.za

17 Progress St
 PO Box 2070
 George 6530