

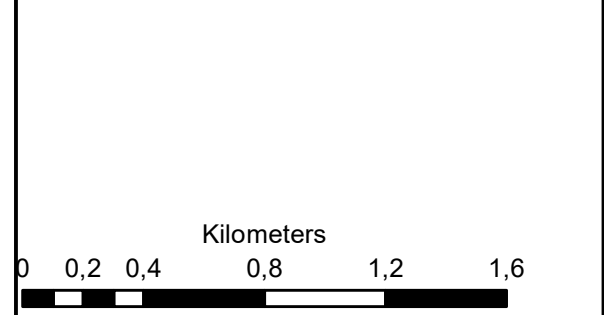
**Bloemsmond 5**  
**Portions 5 & 14 of 455 Bloemsmond**

### Legend

- BM 5 Site Layout
- Eastern Access Alternative

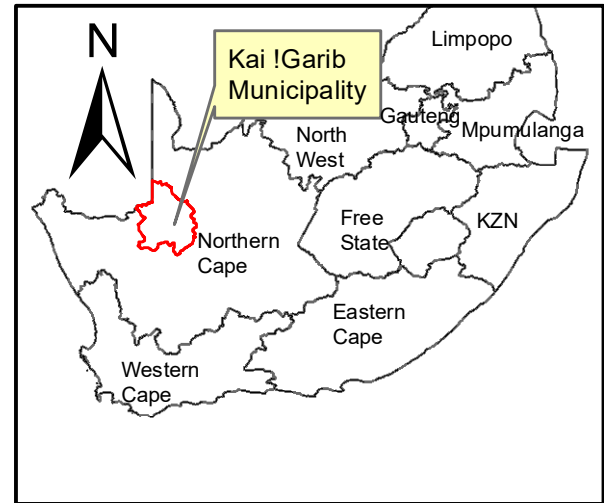
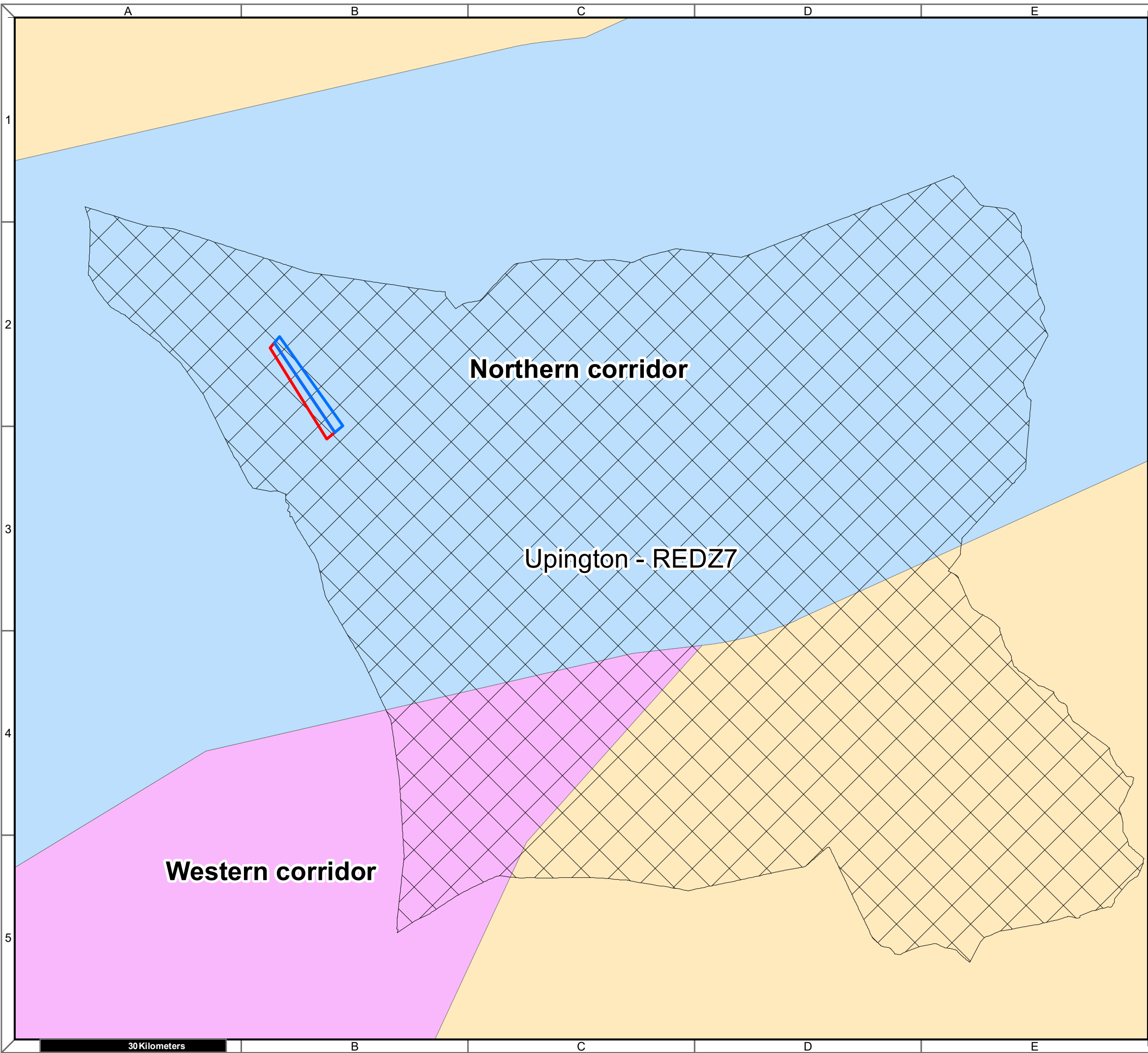
**Notes**

- Map Scale is 1: 25 000 when printed on A3
- Imagery date 2009
- Ecological Sensitivity courtesy of Confluent Environmental & Enviro Insight 2019
- Archaeological Sensitivity courtesy of HCAC 2019





Map Drawn By:	Date	Reference
Melissa Mackay	2019/08/07	KAI582

**Cape Environmental Assessment Practitioners (Pty) Ltd**  
 Reg. No. 2008/0462707  
 Telephone: +27 44 874 0365  
 Facsimile: +27 44 874 0432  
 Web: www.cape-eaprac.co.za  
 17 Progress St  
 PO Box 2070  
 George 6530

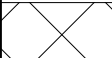


**Bloemsmond**  
**Portions 5 & 14 of 455 Bloemsmond**

**Legend**



-  Portion\_14\_of\_455
-  Portion\_5\_of\_455

**REDZ**

-  Upington - REDZ7

**Power\_corridors**

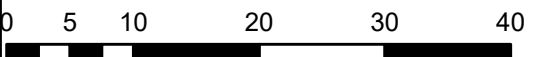
**Corridor**

-  Northern corridor
-  Western corridor

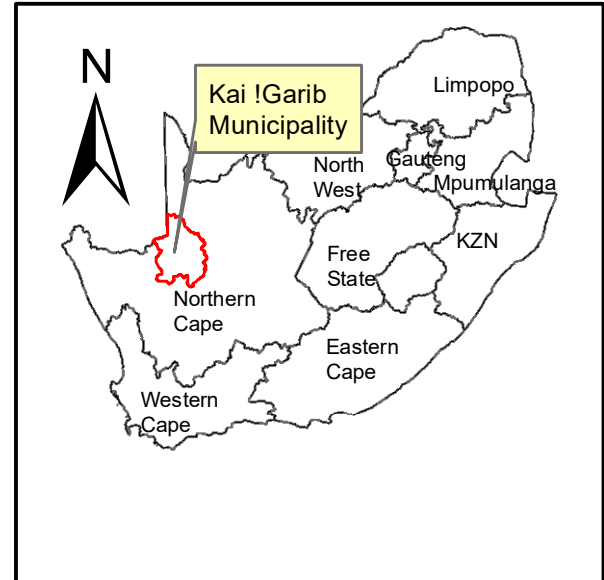
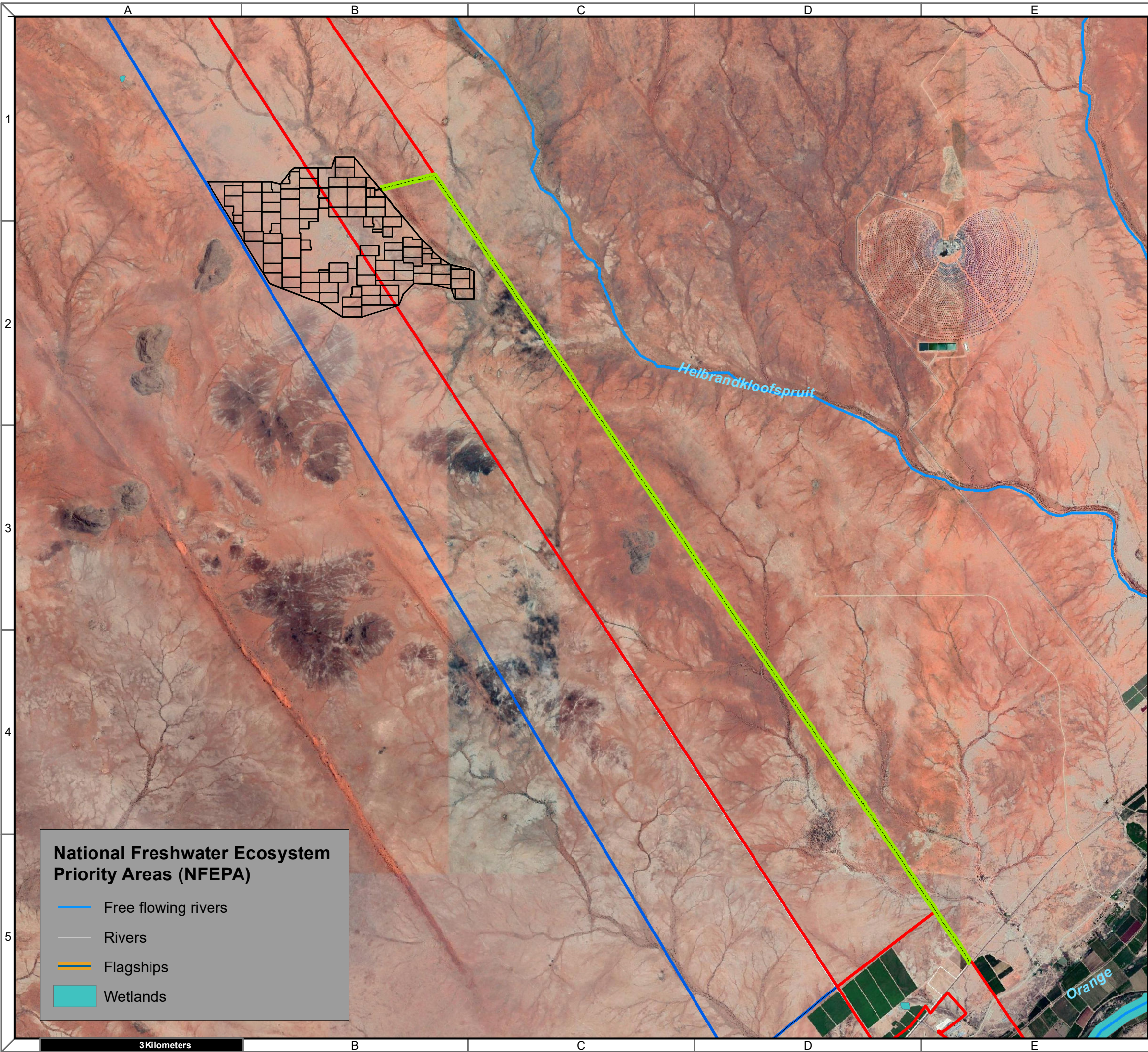
**Notes**

- Map Scale is 1: 600 000 when printed on A3
- REDZ data as per DEA unpublished 2015

Kilometers



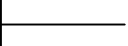
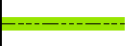


Map Drawn By:	Date	Reference
Melissa Mackay	2019/08/07	KAI582



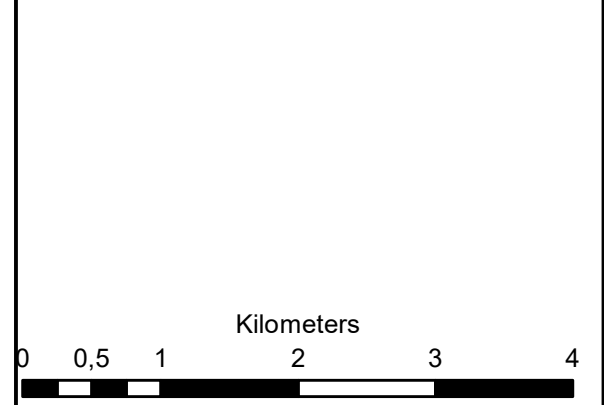
**Bloemsmond 5**  
**Portions 5 & 14 of 455 Bloemsmond**

**Legend**

-  Portion\_5\_of\_455
-  Portion 14 of 455
-  BM 5 Site Layout
-  Eastern Access Alternative

**Notes**

- Map Scale is 1: 43 000 when printed on A3
- Imagery date 2009
- Biodiversity data courtesy of SANBI BGIS 2019



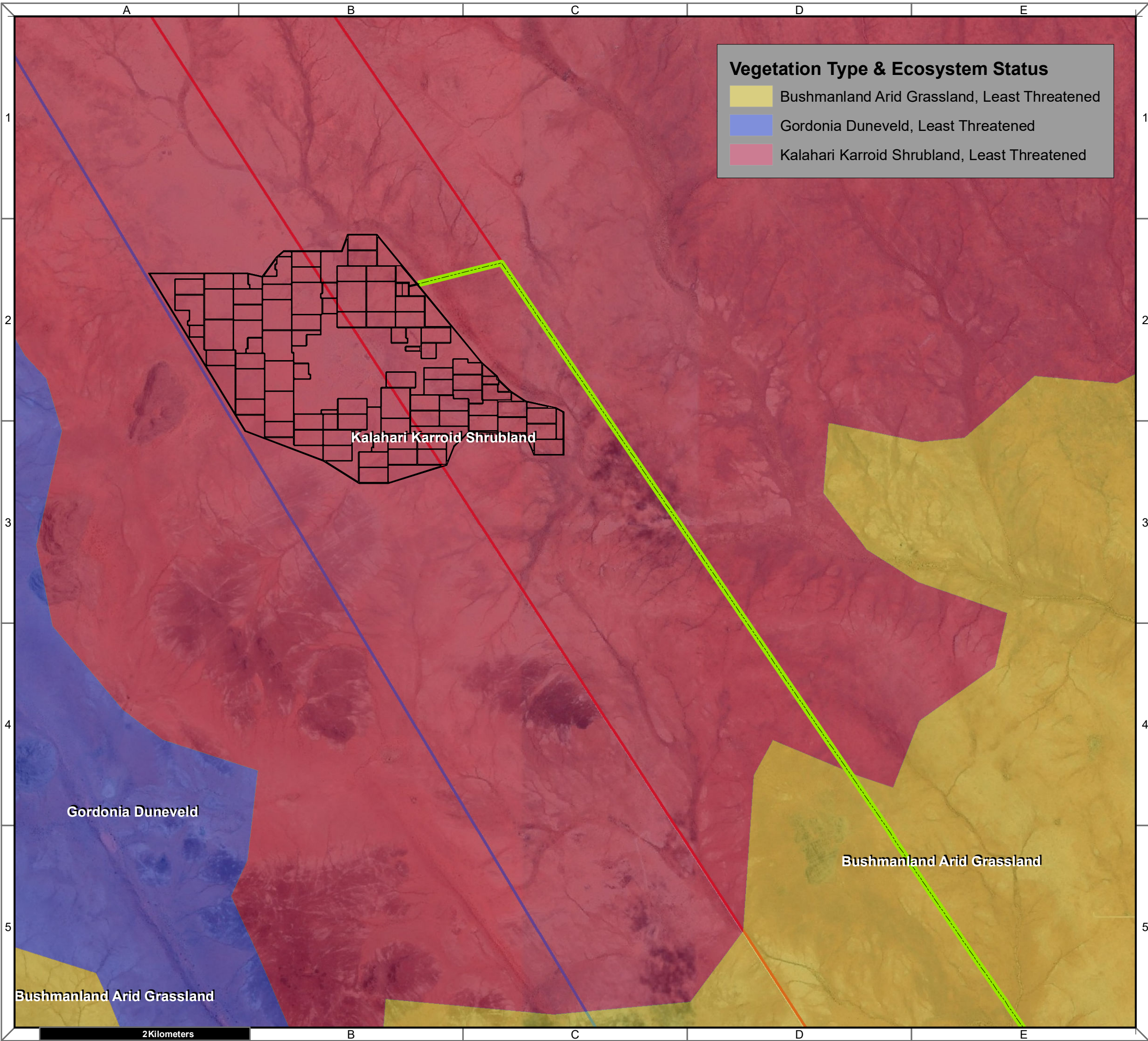
**National Freshwater Ecosystem Priority Areas (NFEPA)**

-  Free flowing rivers
-  Rivers
-  Flagships
-  Wetlands

**Cape Environmental Assessment Practitioners (Pty) Ltd**  
 Reg. No. 2008/0427/07

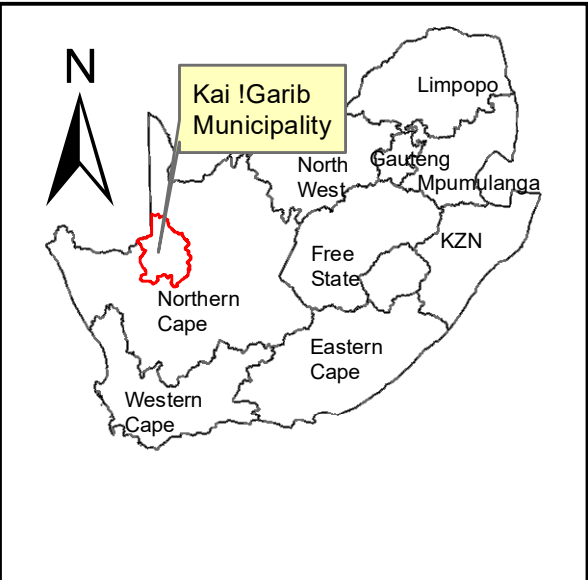
Telephone: +27 44 874 0365  
 Facsimile: +27 44 874 0432  
 Web: www.cape-eaprac.co.za

17 Progress St  
 PO Box 2070  
 George 6530



**Vegetation Type & Ecosystem Status**

- Bushmanland Arid Grassland, Least Threatened
- Gordonia Duneveld, Least Threatened
- Kalahari Karroid Shrubland, Least Threatened



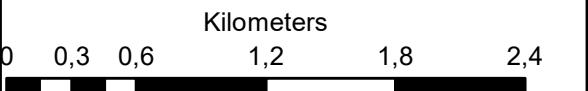
**Bloemsmond 5**  
Portions 5 & 14 of 455 Bloemsmond

**Legend**

- Portion 5 of 455
- Portion 14 of 455
- BM 5 Site Layout
- Eastern Access Alternative

**Notes**

- Map Scale is 1: 35 000 when printed on A3
- Imagery date 2009
- Biodiversity data courtesy of SANBI BGIS 2019



Map Drawn By:	Date	Reference
Melissa Mackay	2019/08/07	KAI582

**Cape Environmental Assessment Practitioners (Pty) Ltd**  
 Reg. No. 2008/0427/07  
 Telephone: +27 44 874 0365  
 Facsimile: +27 44 874 0432  
 Web: www.cape-eaprac.co.za  
 17 Progress St  
 PO Box 2070  
 George 6530