



Figure 1: View east towards existing farm access gate onto target property on northern boundary. Access via Mine roads & security gates (in background).



Figure 2: View south-east along property northern boundary. Boesmanland Solar Farm development area to right of photo & Mine land to left of photo.



Figure 3: View north-west along property northern boundary. Boesmanland Solar Farm development area to left of photo. Note koppie outside site.



Figure 4: View south-east along existing track across solar development area. Note Windpump and Eskom transmission line in background. Eskom line runs parallel to southern boundary of site.

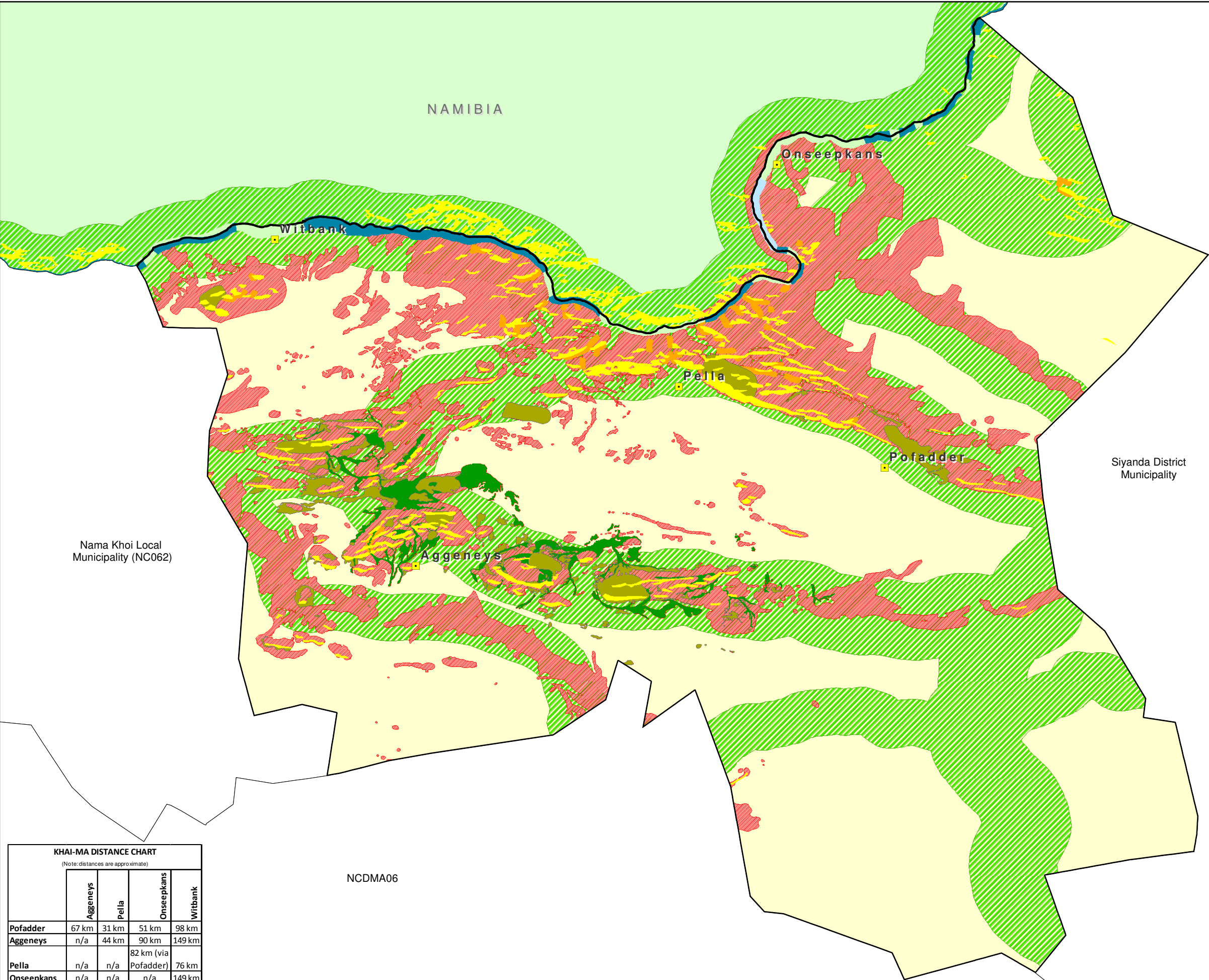


Figure 5: View north-west across solar development area. Note existing concrete reservoirs.

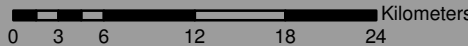


Figure 6: View north-north-east onto Boesmanland Solar Farm development area. Photo taken from sensitive tall red dune system to the southern east of site.

PLAN 13: CRITICAL BIODIVERSITY AREAS (CBA)



PHASE 2 MAPS: KHAI-MA LOCAL MUNICIPALITY



Legend

- Towns
- Local Municipality
- Namibia
- Not identified as critical biodiversity area

Aquatic region: Critical Biodiversity Areas (type & origin)

- A1, Lower Orange River (Expert Areas)
- A2, Lower Orange River (Expert Areas)

Terrestrial region: Critical Biodiversity Areas (type & origin)

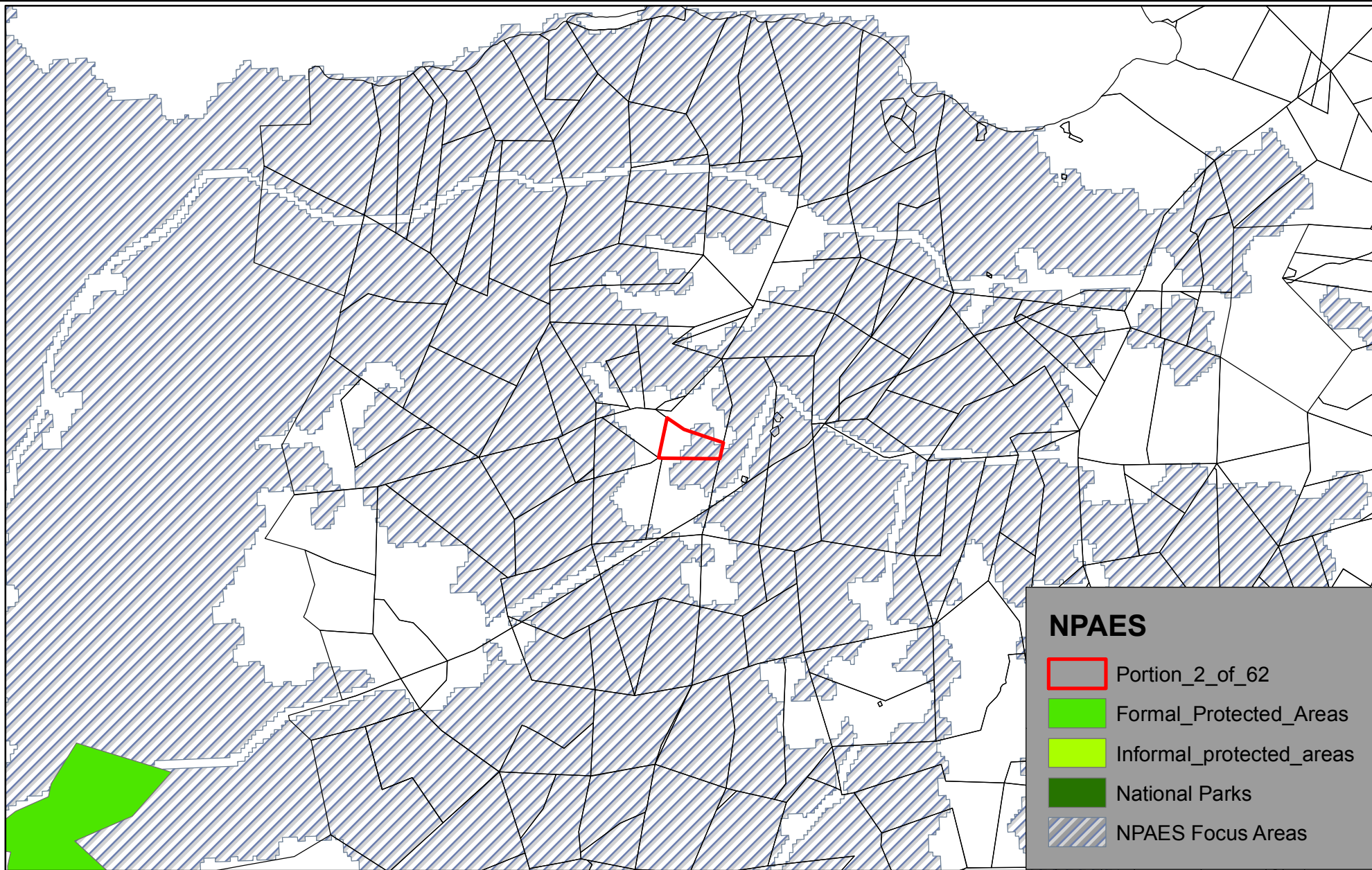
- ESA-T, Corridor (Terrestrial Ecological Support Areas)
- T1, Critical Terrestrial Habitats (Expert Areas)
- T2, Important Terrestrial Habitats (Expert Areas)
- T2, Important Terrestrial Habitats (Kloofs)
- T2, Critical Vegetation Types (Ecosystem status: Endangered & Vulnerable)
- T2, Important Terrestrial Habitats (Quartz patches)
- T2, Important Terrestrial Habitats (South facing slopes)

KHAI-MA DISTANCE CHART


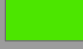



(Note: distances are approximate)

	Aggeneys	Pella	Onseepkans	Witbank
Pofadder	67 km	31 km	51 km	98 km
Aggeneys	n/a	44 km	90 km	149 km
Pella	n/a	n/a	82 km (via Pofadder)	76 km
Onseepkans	n/a	n/a	n/a	149 km

Data source:
Terrestrial & Aquatic CBA's: Namakwa Biodiversity Sector Plan 2008

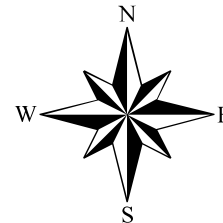


NPAES

-  Portion_2_of_62
-  Formal_Protected_Areas
-  Informal_protected_areas
-  National Parks
-  NPAES Focus Areas

20 10 0 20 Kilometers

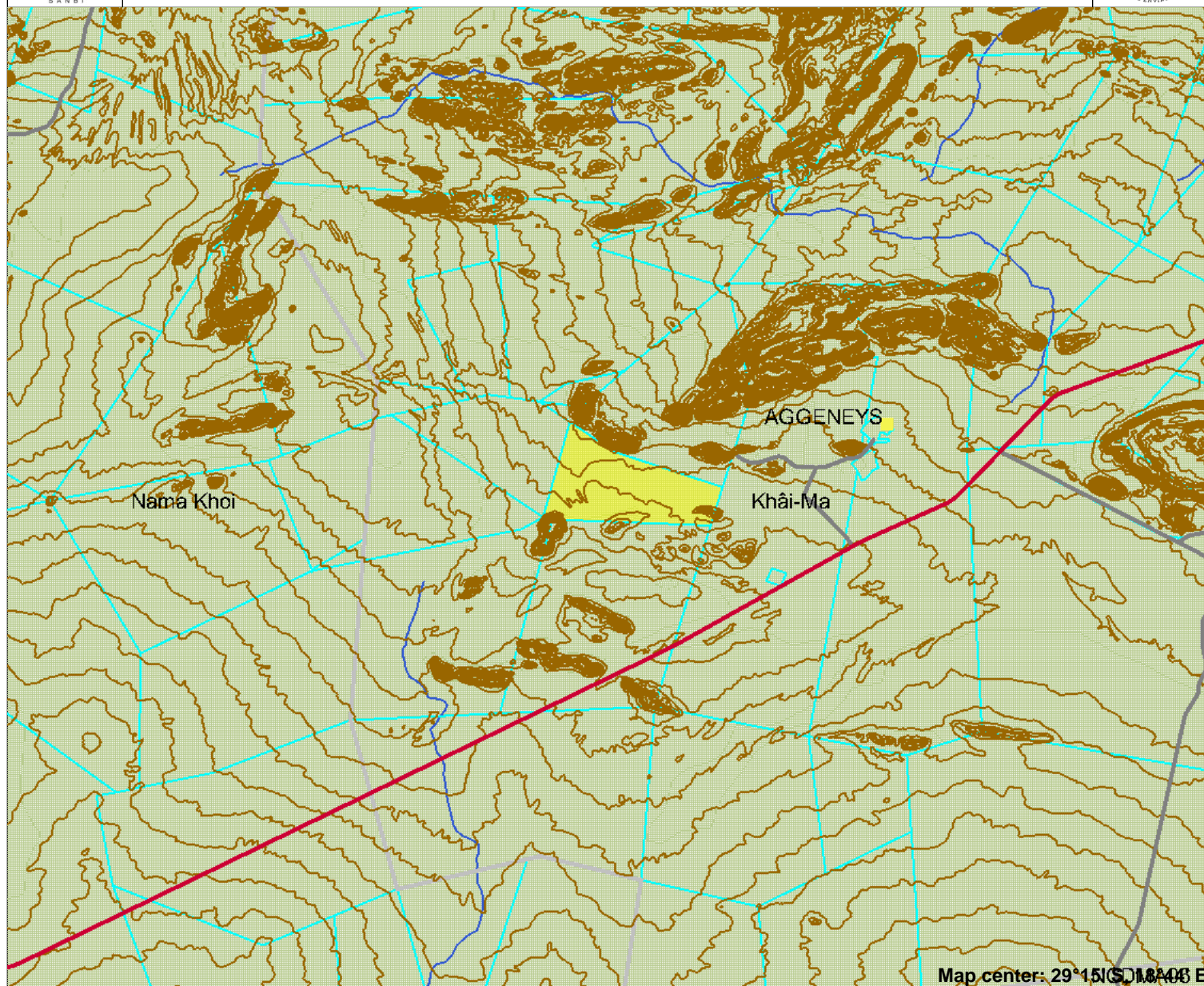
Map Scale is 1 : 500 000 when printed on A4.
Data Source: NPAES data from SANBI BGIS 2011



National Protected Areas Expansion
Strategy (NPAES)
Boesmanland Solar Farm
Portion 2 of 62 Zuurwater, Aggenys
Ref: KHA131
Date: May 2011



Aggeneys Solar 2/62



Legend

- Towns
- National Roads
- Main Roads
- Contours_B
- Contours_A
- Municipalities
- Farm Boundaries
- Rivers
- NSBA Terrestrial Ecosystem Status
 - Critically endangered
 - Endangered
 - Least threatened
 - Vulnerable

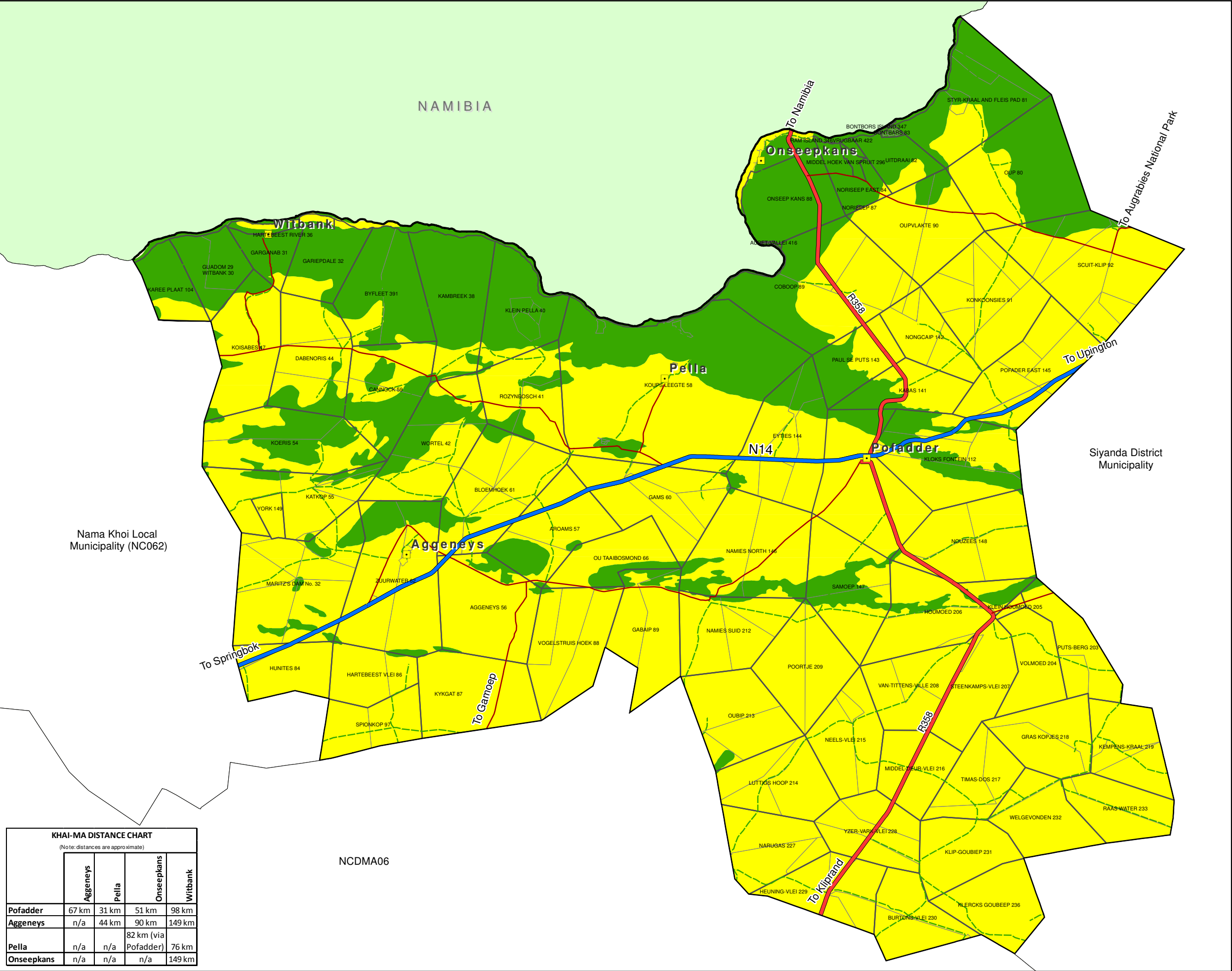


Scale: 1:358,804

Map center: 29°15'S 18°40'E

This map is a user generated static output from an Internet mapping site and is for general reference only. Data layers that appear on this map may or may not be accurate, current, or otherwise reliable. THIS MAP IS NOT TO BE USED FOR NAVIGATION.

PLAN 21: AGRICULTURAL LAND CAPABILITY



PHASE 2 MAPS: KHAI-MA LOCAL MUNICIPALITY

Legend

- Towns
- National route
- Main roads
- Secondary roads
- Other access
- Railways
- Farm portions
- Parent Farms
- Namibia

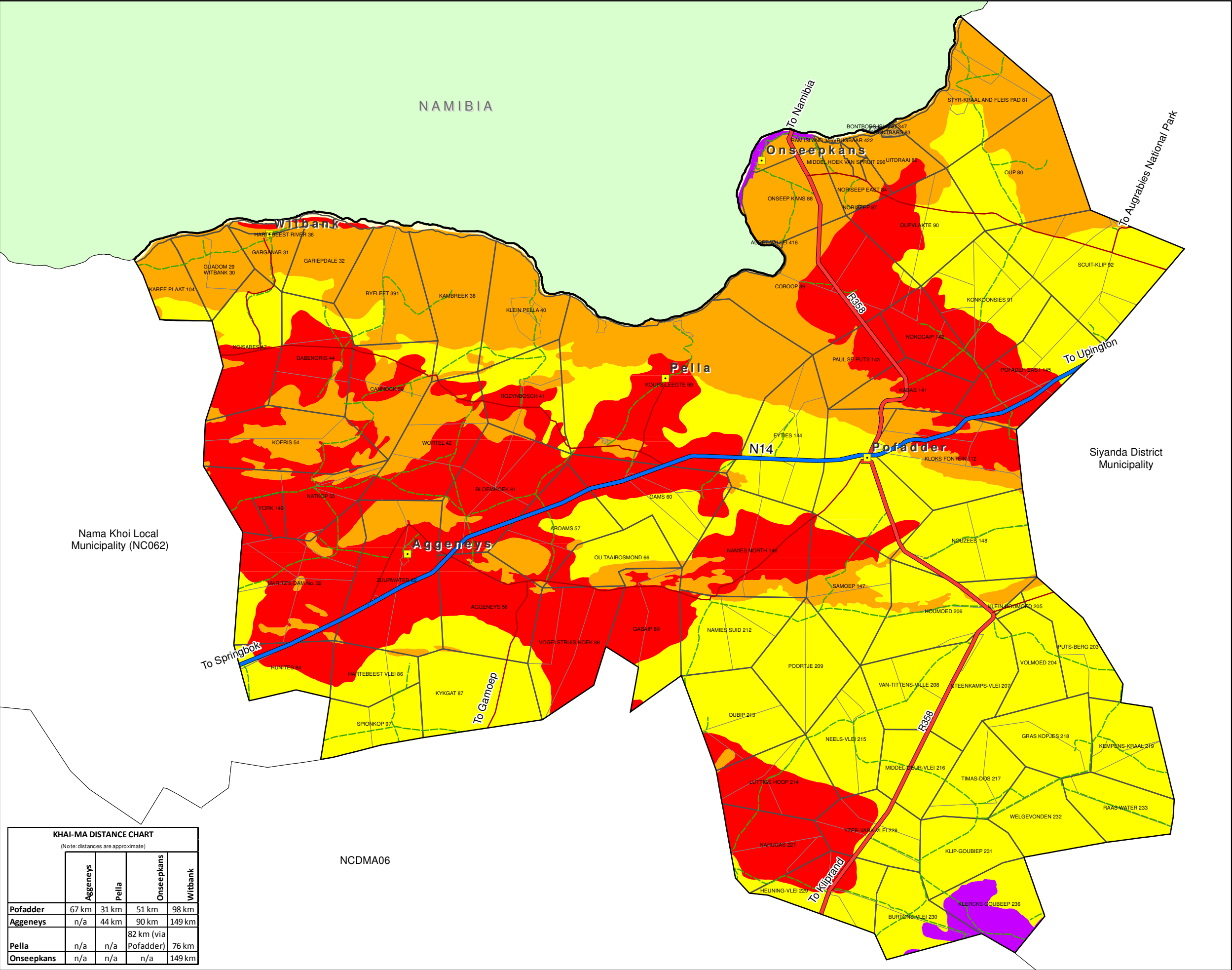
Land Capability

- Non-arable; low potential grazing land
- Non-arable; low to moderate potential grazing land
- Non-arable; moderate potential grazing land
- Wilderness
- Water

KHAI-MA DISTANCE CHART				
(Note: distances are approximate)				
	Aggeneys	Pella	Onseepkans	Witbank
Pofadder	67 km	31 km	51 km	98 km
Aggeneys	n/a	44 km	90 km	149 km
Pella	n/a	n/a	82 km (via Pofadder)	76 km
Onseepkans	n/a	n/a	n/a	149 km

Data source:
Land Capability - Enpat NCape

PLAN 22: AGRICULTURAL SOIL POTENTIAL



PHASE 2 MAPS: KHAI-MA LOCAL MUNICIPALITY



0 3 6 12 18 24 Kilometers

Legend

- Towns
- National route
- Main roads
- Secondary roads
- Other access
- Railways
- Farm portions
- Parent Farms
- Namibia

Agricultural soil potential

- Soils of poor suitability for arable agriculture where climate permits
- Not suitable for agriculture or commercial forestry; suitable for conservation, recreation or water catchments
- Soils not suitable for arable agriculture; suitable for forestry or grazing where climate permits
- Soils highly suited to arable agriculture where climate permits
- Soils of intermediate suitability for arable agriculture where climate permits
- Waterbodies
- No dominant class

Data source:
Soil potential - Enpat 2001

KHAI-MA DISTANCE CHART

(Note: distances are approximate)

	Aggeneys	Pella	Onseepkans	Witbank
Pofadder	67 km	31 km	51 km	98 km
Aggeneys	n/a	44 km	90 km	149 km
Pella	n/a	n/a	82 km (via Pofadder)	76 km
Onseepkans	n/a	n/a	n/a	149 km