



Figure 1: View to south-west from nearby koppie onto Khoi-Sun Development area.



Figure 2: View north-west from Schuitdrift Substation along farm road and 33kV powerline towards Southern Farms - proposed alignment of water pipeline (if this alternative is chosen).



Figure 3: *Hoodia gordonii* plants within the study site. These are to be translocated prior to commencement of construction activities.



Figure 4: View south-west from nearby koppie, across solar site. Note existing Schuitdrift Substation on left of photo.



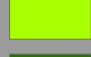




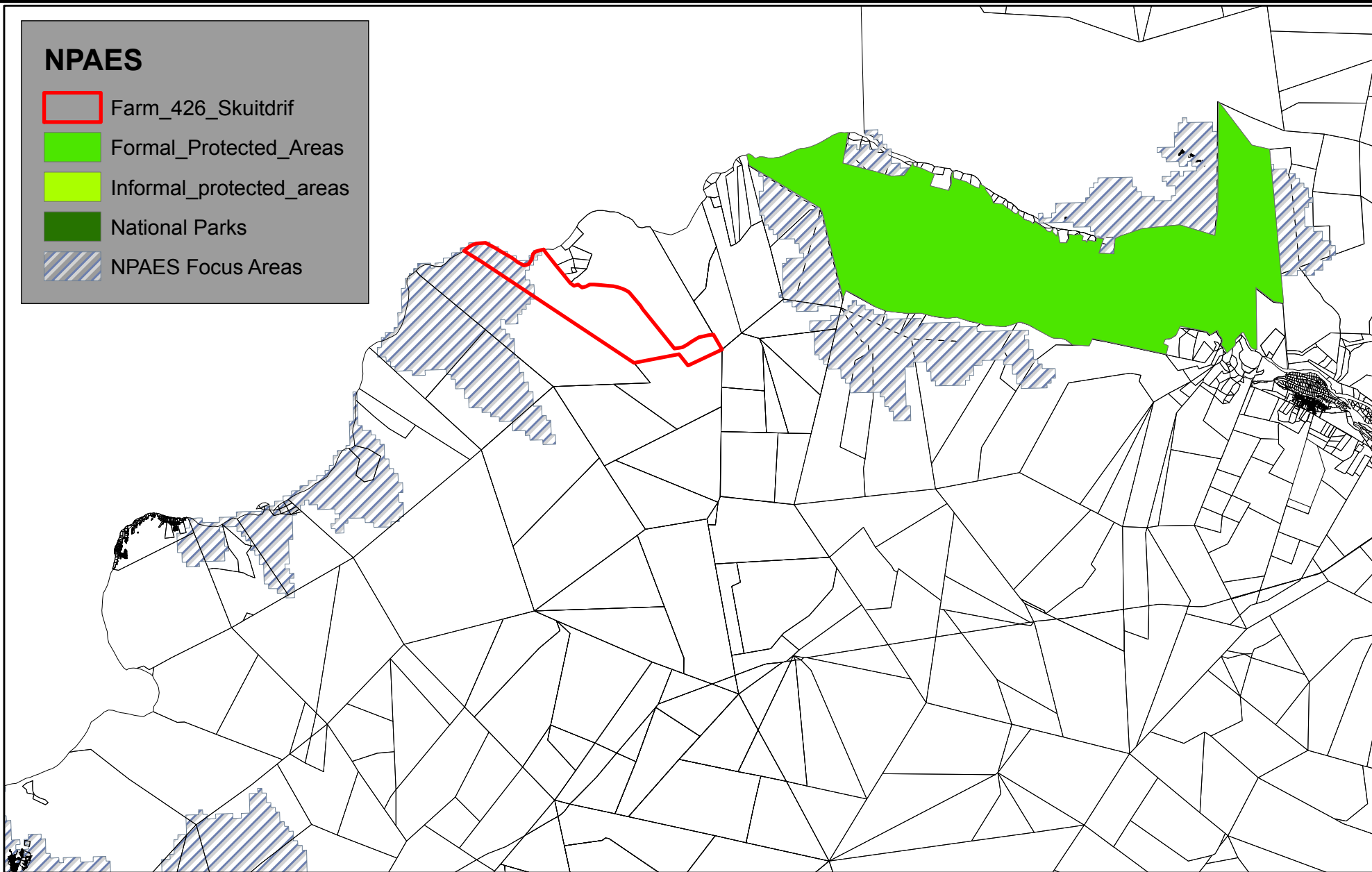
Figure 5: Wind pump and reservoir adjacent to the proposed Khoi sun solar facility. This source is under investigation for operational water supply to the facility.



Figure 6: Existing Schuitdrift Eskom Substation - proposed Khoi Sun Development to connect to the national grid here via an approx. 200m transmission line.

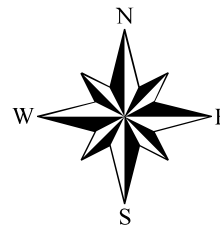
NPAES

-  Farm_426_Skuidrif
-  Formal_Protected_Areas
-  Informal_protected_areas
-  National Parks
-  NPAES Focus Areas



20 10 0 20 Kilometers

Map Scale is 1 : 500 000 when printed on A4.
Data Source: NPAES data from SANBI BGIS 2011

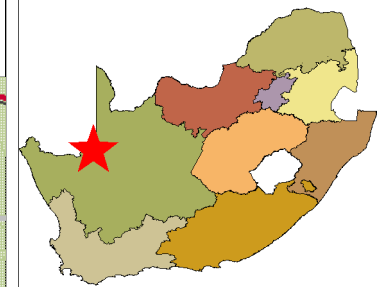


National Protected Areas Expansion
Strategy (NPAES)

Farm 426 Skuidrif
Ref: KHA132
Date: October 2011



Skuitdrif Solar

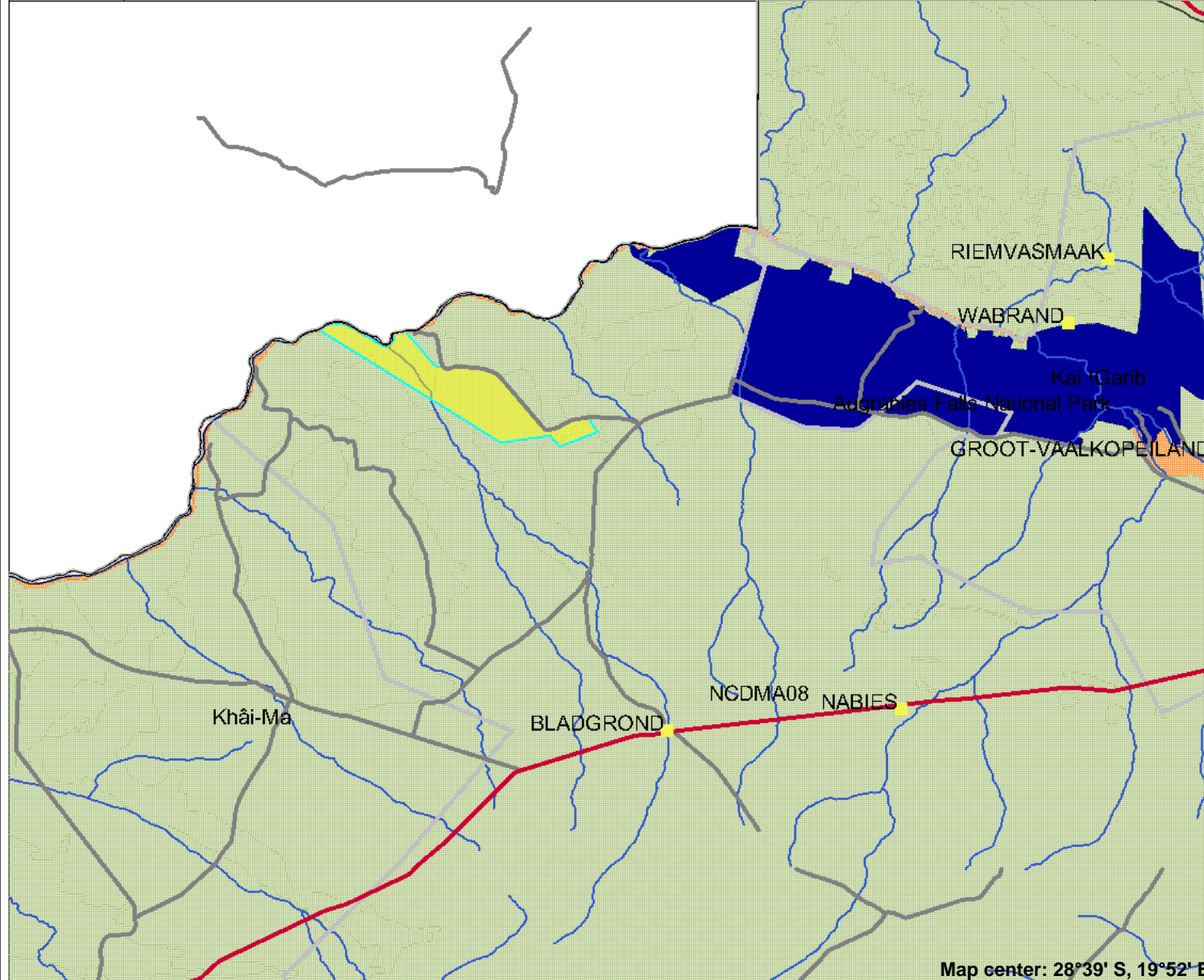


Legend

- Towns
- National Roads
- Main Roads
- Southern Africa boundaries
- Railways
- Municipalities
- Farm Boundaries
- Rivers
- NSBA Rivers Ecosystem Status
 - Critically endangered
 - Endangered
 - Least threatened
 - Vulnerable
- South African National Parks
- NSBA Terrestrial Ecosystem Status
 - Critically endangered
 - Endangered
 - Least threatened
 - Vulnerable
- NSBA Terrestrial Protected Areas
 - Type 1
 - Type 2
 - Type 3



Scale: 1:800,532

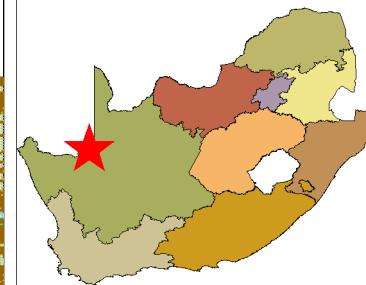


This map is a user generated static output from an Internet mapping site and is for general reference only. Data layers that appear on this map may or may not be accurate, current, or otherwise reliable. THIS MAP IS NOT TO BE USED FOR NAVIGATION.

Notes: Nearest protected Areas



Skuitdrif Solar

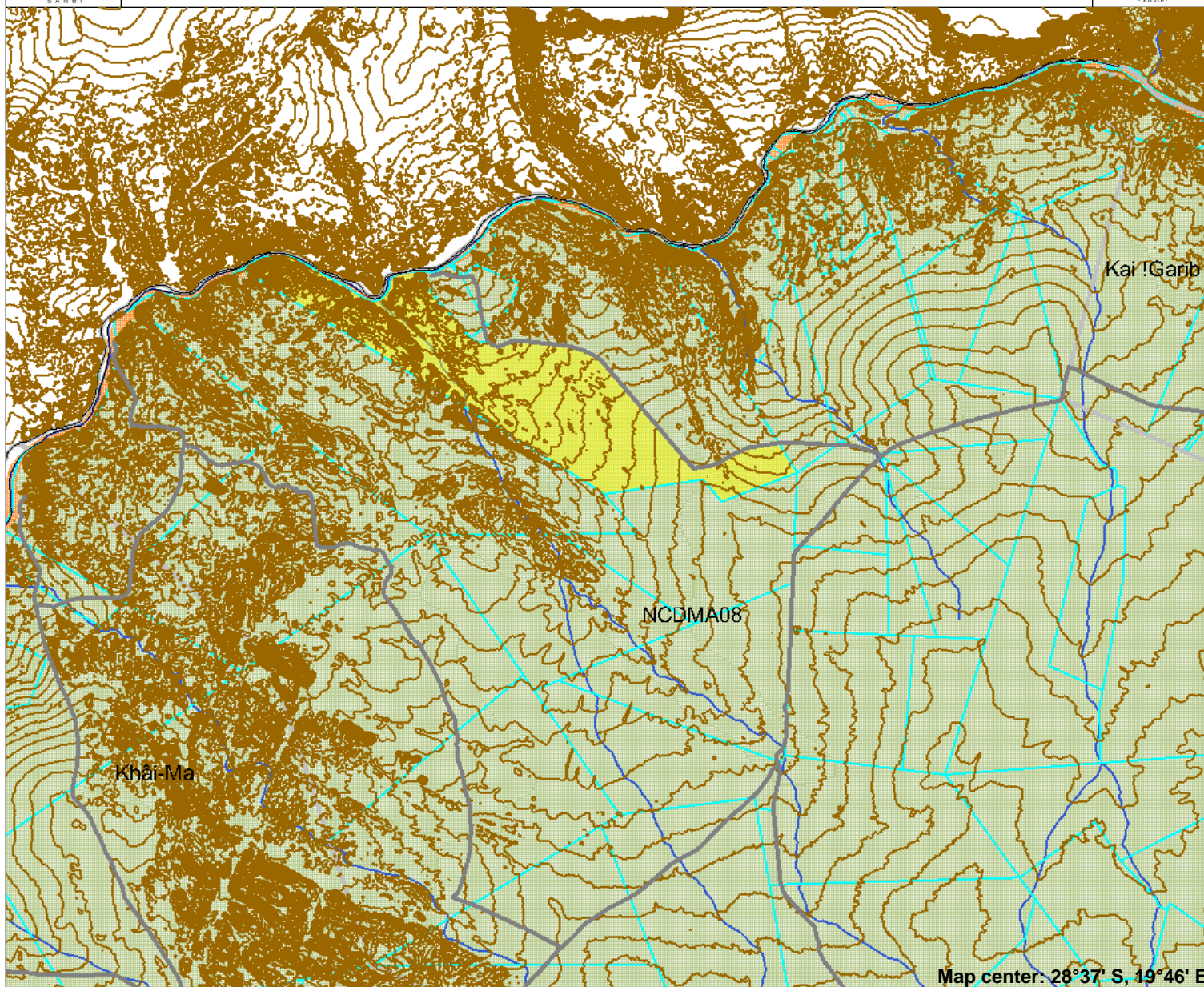


Legend

- Towns
- National Roads
- Main Roads
- Contours_B
- Contours_A
- Southern Africa boundaries
- Railways
- Municipalities
- Farm Boundaries
- Rivers
- NSBA Rivers Ecosystem Status
 - Critically endangered
 - Endangered
 - Least threatened
 - Vulnerable
- NSBA Terrestrial Ecosystem Status
 - Critically endangered
 - Endangered
 - Least threatened
 - Vulnerable



Scale: 1:400,266



This map is a user generated static output from an Internet mapping site and is for general reference only. Data layers that appear on this map may or may not be accurate, current, or otherwise reliable. THIS MAP IS NOT TO BE USED FOR NAVIGATION.