

## **APPENDIX B**

### **OTHER MAPS (SANBI)**

- Terrestrial sensitivity (on Google image)
- Terrestrial sensitivity – Critical Biodiversity Area (CBA) 2
- Aquatic sensitivity – Hex River  $\pm 600\text{m}$  south east from site; Olifantsnek Dam  $\pm 115\text{m}$  south from site
- Magaliesberg Biosphere Core and Buffer Zones relative to site – site located within core

### Terrestrial Sensitivity Map - Port 21 & 85 Boschfontein 330 JQ, Rustenburg

**Description**  
Map showing terrestrial CBA's and ESA's on and in close proximity to Kgaswane Country Lodge site.



- Legend**
- National roads
  - Secondary roads
    - ARTERIAL ROUTE
    - MAIN ROAD
    - SECONDARY ROAD
  - ▭ Provincial borders
  - Terrestrial Critical Biodiversity Areas
    - Critical Biodiversity Area 1
    - Critical Biodiversity Area 2
    - Ecological Support Area 1
    - Ecological Support Area 2
  - World Street Map
  - World Imagery
    - Low Resolution 15m Imagery
    - High Resolution 60cm Imagery
    - High Resolution 30cm Imagery
  - Citations

1: 9 028 



**Description**

Map showing terrestrial CBA's and ESA's on and in close proximity to Kgaswane Country Lodge site.



**Legend**

- National roads
- Towns
- ▭ Provincial borders
- Terrestrial Critical Biodiversity Areas**
  - Critical Biodiversity Area 1
  - Critical Biodiversity Area 2
  - Ecological Support Area 1
  - Ecological Support Area 2
- World Imagery**
  - Low Resolution 15m Imagery
  - High Resolution 60cm Imagery
  - High Resolution 30cm Imagery
  - Citations

1: 9 028



0,5 0 0,23 0,5 Kilometers

### Aquatic Sensitivity Map - Port 21 & 85 Boschfontein 330 JQ, Rustenburg

**Description**

Map showing aquatic CBA's and ESA's, rivers and wetlands on and in close proximity to Kgaswane Country Lodge site.



**Legend**

- Rivers (NFEPA)
  - 1
  - 5
  - 10
- Wetland clusters (NFEPA)
- National wetlands map 4 (NFEPA)
- National roads
- Secondary roads
  - ARTERIAL ROUTE
  - MAIN ROAD
  - SECONDARY ROAD
- Provincial borders
- Aquatic Critical Biodiversity Areas
  - Critical Biodiversity Area 1
  - Critical Biodiversity Area 2
  - Ecological Support Area 1
  - Ecological Support Area 2
- World Street Map
- World Imagery
  - Low Resolution 15m Imagery
  - High Resolution 60cm Imagery
  - High Resolution 30cm Imagery
- Citations

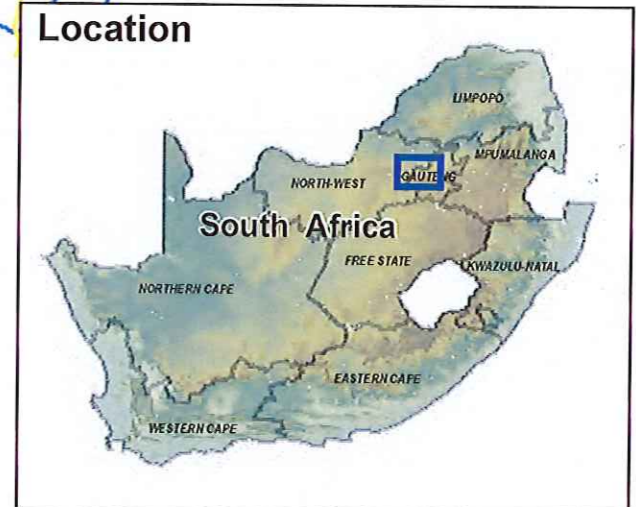
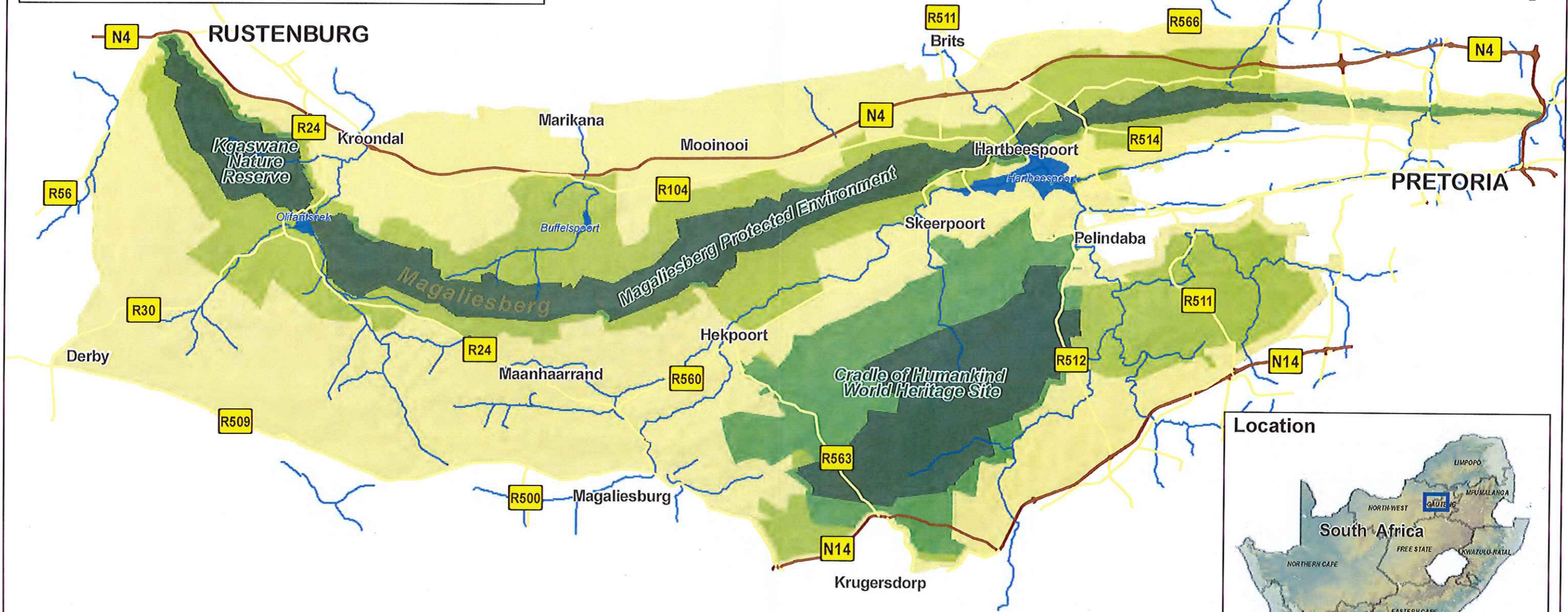
1: 18 056



0,9 0 0,46 0,9 Kilometers

# MAGALIESBERG BIOSPHERE

## Zonation



### Legend

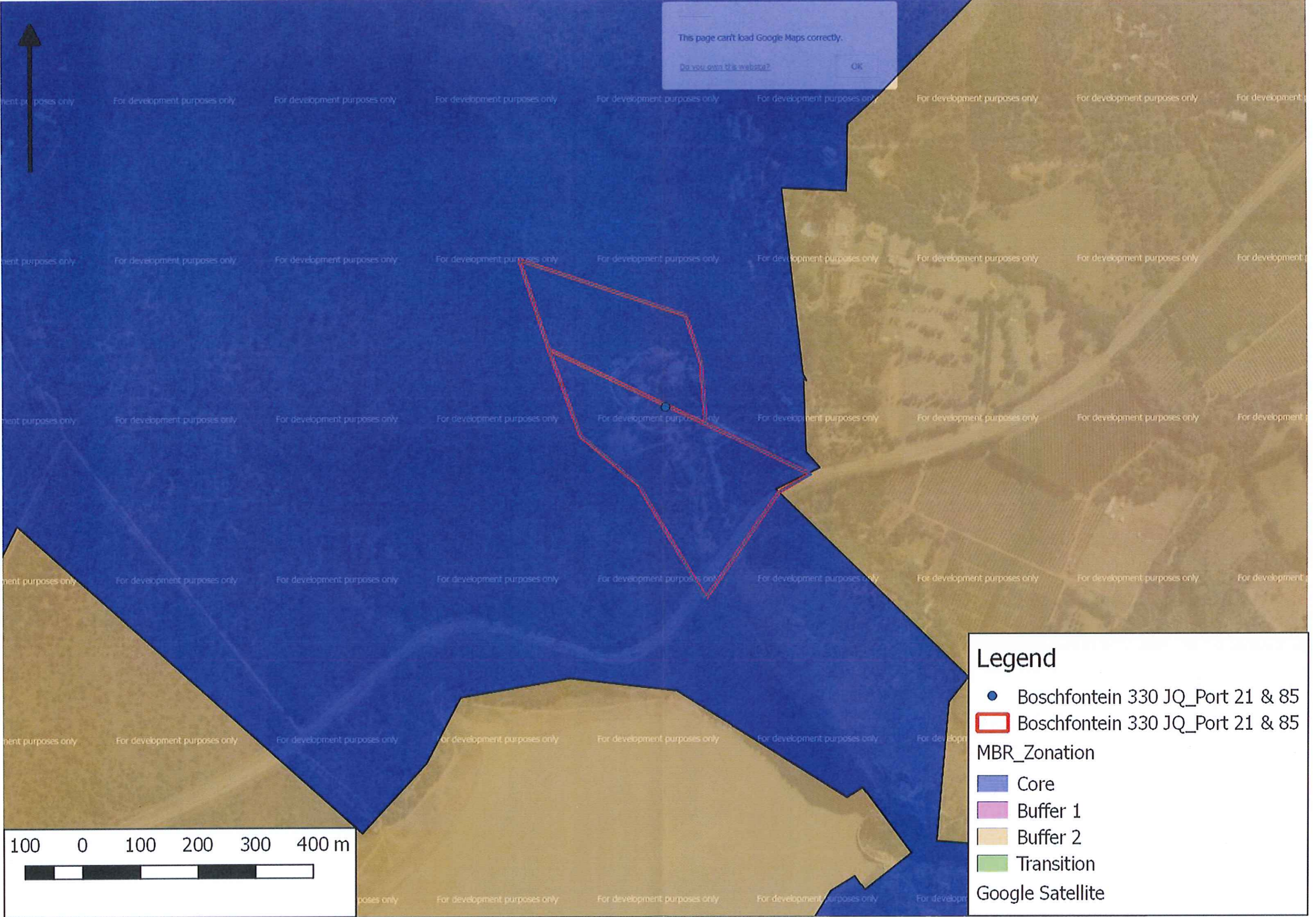
- |  |                  |  |            |
|--|------------------|--|------------|
|  | NATIONAL ROADS   |  | CORE       |
|  | REGIONAL ROADS   |  | BUFFER 1   |
|  | PERENNIAL RIVERS |  | BUFFER 2   |
|  | MAJOR DAMS       |  | TRANSITION |

Compiled by: Contour Project Managers  
Date: 18 September 2014

GCS\_WGS\_1984  
Datum: D\_WGS\_1984



This page can't load Google Maps correctly.  
[Do you own this website?](#)



**Legend**

- Boschfontein 330 JQ\_Port 21 & 85
- ▭ Boschfontein 330 JQ\_Port 21 & 85

**MBR\_Zonation**

- Core
- Buffer 1
- Buffer 2
- Transition

Google Satellite

