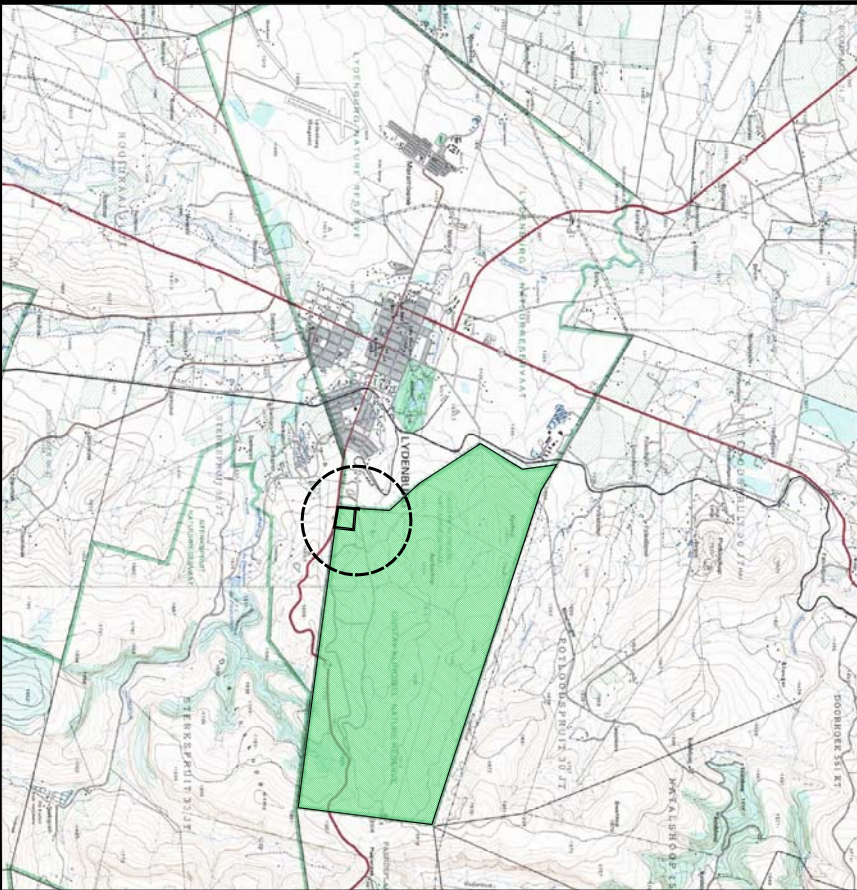


LOCALITY PLAN



SETTLEMENT PLAN  
PROPOSED DEVELOPMENT AREA FOR  
**GUSTAV KLINGBIEL NATURE RESERVE**  
IN LYDENBURG.

SITUATED ON PORTION 55 AND PART OF THE REMAINING  
EXTENT OF PORTION 39 OF THE FARM TOWNLANDS OF  
LYDENBURG No. 31 J.T.

LAND USE TABLE

ZONING	AREA (HA)	APPROXIMATE FLOOR AREA
BUILDING DEVELOPMENT FOOTPRINT AREA		7.4787ha
		7.4787ha

- The figure "ABCDEA" represents the proposed development area for **Gustav Klingbiel Nature Reserve**, situated on Part Portion 55 and Part of the Remaining Extent of Portion 39 of the farm Townlands of Lydenburg No. 31 J.T., measuring ±7,4787HA
- The land is situated in the jurisdiction of Thaba Chweu Local Municipality.
- Base plan, including contours was prepared by Johan Oosthuizen Professional Land Surveyor in March 2009.
- All areas and dimensions are approximate and subject to final survey.
- The following Land Uses may be developed on the developable area
  - Museum Related Facilities
  - Hotel and Related Facilities including Spa, Conference, Bars, Restaurants, Sports and Recreation
  - Tourism Related Accommodation (Lodges)

DATE: 02 JULY 2012                      Ref No.H 1538



**A S S O C I A T E S**  
**T O W N   A N D   R E G I O N A L   P L A N N E R S**

459 ONDEKKERSROAD, FLORIDA HILLS, 1709  
P.O. BOX 78246, SANDTON 2146  
Tel:(011) 4723230 Fax: (011) 4723205  
e-mail: gresssoco@nwelb.co.za

