

TS'OANELO TOKOMANE YA TSEBISO

ENVIRONMENTAL AUTHORISATION APPLICATION PROCESS FOR THE PROPOSED TETRA4 CLUSTER 2 GAS PRODUCTION PROJECT



MORERO OA TOKOMANE ENA:

- Tokomane ena ea Tlhahisoleseding e ka Moraong (BID) e hofa, joalo ka Mokha o Thahasellang le o amehileng (I&AP), kakaretso ea boemo bo holimo ea projeke e reriloeng.
- BID e ho mema, joalo ka I&AP, ho nka karolo ho Ts'ebetso e latelang ea Phatlalatsa ea Sechaba.
- BID efa wena, joalo ka I&AP monyetla oa ho kenya letsoho le ho nka karolo ho thehoeng ha Litlaleho tsa Tekolo ea Boipheliso ba Sekoupo le Litlaleho le Lenaneo la Taolo ea Tikoloho (EMPr).
- BID e boetse efa wena, joalo ka I&AP monyetla oa ho fa sehlopha sa projeke maikutlo, matshwenyeho le khanyetso mabapi le projeke e reriloeng.

SELELEKELA:

Tetra4 (Pty) Ltd (eo hamorao e tla bitsoa mokopi - Tetra4) e khethile Litšebeletso tsa Taolo ea Impact ea Tikoloho (EIMS) joalo ka Setsebi sa Tekolo ea Tikoloho (EAP) ho thusa ka ho etsa lits'ebetso tse hlokalang tsa tumello, ho kenyeletsoa ho hlophisa litlaleho tse hlokalang le ho etsa molao. ditherisano, ho tshehetsa morero o sisintsweng jwalo ka ha ho hlalositse mona.

Ho lebeletsoe hore mesebetsi e mengata e thathamisoeng kapa e laoloang e teng molaong o latelang e ka 'na ea hlalisoa ke morero o reriloeng:

- Tumello ya Tikoloho (EA) le dihlomathiso ho ya ka Molao wa Naha wa Taolo ya Tikoloho-NEMA (Molao wa 107 wa 1998).
- Kopo/phapang ya Laesense ya Mosi wa Atmospheric ho ya ka ditlhoko tsa National Environmental Management: Air Quality Act- NEM:AQA (Act 39 of 2004).
- Laesense ea Taolo ea Litšila ho latela litlhoko tsa National Environmental Management: Waste Act- NEM:WA (Molao oa 59 oa 2008).
- Laesense ya Tshebediso ya Metsi (WUL) ho ya ka Molao wa Naha wa Metsi - NWA (Molao wa 36 wa 1998).
- Phetoho ea Litumello kapa Meralo ea Litokelo ho latela Karolo ea 102 ea Molao oa Ntlatatso ea Mehlopi ea Liminerale le Petroliamo - MPRDA (Molao oa 28 oa 2002).

Litlhoko tse nepahetseng tsa molao le lits'ebetso li tla netefatsoa nakong ea likopano tsa pele ho kopo ea Lekhotla.

Tshebetso ya Tekolo ya Phello ya Tikoloho (EIA) e tla etswa ho ya ka Kgaolo ya 6 ya Melawana ya EIA , 2014 (GNR 982) e phatlaladitsweng tlasa NEMA (jwalo kaha e fetotswe). Ho tla lateloa ts'ebetso ea Tekolo ea Boipheliso ba Tikoloho (Scoping and Environmental Impact Assessment) (EIA).

Sepheo sa Tokomane ea Boitsebiso ba Background (BID):

Sepheo sa BID ke ho:

- Nehelana ka kakaretso ea Likopo tsa Tumello ea Tikoloho/Laesense hammoho le lits'ebetso tsa ho kenya letsoho ha sechaba tse tla etsoa bakeng sa projeke e reriloeng;
- Lumella Mekha e Thahaselitsoeng le e Amehileng (I&APs) monyetla oa ho fumana kutloisiso e batsi ea morero o sisintsoeng le ho kopa kapa ho arolelana tlhahisoleseling; le
- Fana ka lintlha tse mabapi le hore na I&APs ba ka ngolisa thahasello ea bona joang le ho fana ka maikutlo mabapi le projeke. Ho bohlokoa ho eelloa hore ke li-I&APs tse ngolisitsoeng feela tse tla fumana puisano e eketsehileng mabapi le morero nakong ea ts'ebetso ea kopo (ke hore, memo ea ho hlahloba le ho fana ka maikutlo mabapi le Litlaleho tsa Tekolo ea Boipheliso le Boipheliso ba Tikoloho, lithuto tsa litsebi le EMPr).



LEBAKA, SEKALLO, LE BOLEMONG BA MORERO OA POREJEKE EO ESISINTSWENG:

SEBAKA

Porojeke e sisintsweng e wela ka hara Masepala wa Lehae wa Masilonyana le Matjhabeng, ka hara Masepala wa Setereke wa Lejweleputswa, Profinseng ya Foreisetata. Moeli oa sebaka ke ~ 5km ka boroa-bophirima ho toropo ea Virginia, ~ 9km ka boroa ho toropo ea Welkom le ~ 16km ka leboea ho toropo ea Theunissen. Sebaka sa kopo se akaretsa hoo e ka bang liheketara tse 27 500, 'me sebaka se hakanyetsoang sa setsi sa setša se fumaneha ho 28°10'20.47"S le 26°43'50.79"E. 'Mapa oa sebaka o kenyelelitsoe leqepheng la 6 la BID ena molemong oa ho u thusa.

Morero ona o akaretsa likarolo tse fapaneng tsa mapolasi le sete ea limmapa tse bontšang mapolasi le likaroloana li ka fumanoa weposaeteng ea EIMS ho www.eims.co.za/public-participation. Ka tlase lethathamo la mapolasi a batsoali ao likarolo tse ling tsa ona li kenyelelitsoeng tlasa kopo ena:

Adamsons Vley No. 655, Annex Glen Ross No. 562, Annex Grusde No. 474, Annex Mooivlakte No. 208, Blaauwdrift No. 188, Bloemhoek No. 509, Boschluis Spruit No. 278, Braklaagte No. 41, Brakspruit No. 121, Brintjies Hoogte No. 367, Bryan No. 561, Cabriere No. 215, Carlo No. 596, Damplaats No. 341, Dankbaarheid No. 16, De Klerks Kraal No. 231, Die Mond No. 479, Digito No. 642, Doorn River No. 330, Doorndeel No. 236, Enkeldoorn No. 360, Frisgewaag No. 550, Glen Ross No. 734, Grusde No. 229, Hakkies No. 695, Hakkies No. 742, Harmonie No. 579, Helpmekaar No. 47, Jonkers Rust No. 72, Jordaan No. 1, Jordans Rust No. 59, Kaalpan No. 65, Kalkoenkrans No. 225, Klein Palmiet Kuil No. 407, Klein Pan No. 320, Kleinbegin No. 134, Kovno No. 235, Langlaagte No. 110, Leeuwarden No. 171, Leeuwbult No. 52, Leeuwbult No. 580, Lekkerlewe No. 643, Middelpaas No. 583, Mond Van Doornrivier No. 38, Mooifontein No. 639, Mooivlakte No. 199, Mooivlei No. 357, Nortier No. 361, Palmietkuil No. 548, Palmietkuil No. 328, Paulina No. 470, Richelieu No. 135, Rondehoek No. 200, Siberia No. 464, Spoorleggerswoning 54 No. 167, Stille Woning No. 703, Terra Blanda No. 155, Toulon No. 368, Vaalbank No. 190, Vlakpan No. 358, Welgelegen No. 382, Weltevrede No. 638, Weltevreden No. 443, Zoetendal No. 243, Zonderzorg No. 342, Zonderzorg No. 640

TLHALOSO EA PROJECT:

Mokopi o lakatsa ho atolosa ts'ebetso ea bona ea khase ea tlhaho (helium le methane), e fumanehang ka har'a sebaka se nepahetseng sa tlhahiso (Production Right Ref: 12/4/1/07/2/2). Nalane ea morero le 'mapa oa nako ea liminerale li kenyelelitsoe leqepheng la 6 la BID ena molemong oa ho u thusa. Katoloso e reriloeng ea mesebetsi e teng e amohetsoeng ea tlhahiso e tla kenyetse liliba tsa tlhahiso tse fihlang ho 300, lipeipi tsa phetiso ea khase le meaho e amanang le eona, liteishene tsa compressor le polante ea Liquid Natural Gas (LNG) le Liquid Helium (LHe) ("LNG/LHe Plant") le meaho e amanang le eona e le karolo ea katoloso ea Cluster 2 ea Morero molemong oa ho fihlela litlhoko tsa tlhahiso ea nako e tlang. Morero oa Cluster 2 o tla ba le likarolo tse peli e leng (1) marangrang a pokello ea khase le (2) Setsi sa LNG/LHe.

Kaha sebaka se ikhethileng sa liliba tse ncha tsa tlhahiso le liphaephe tse latelang le meralo ea motheo e amanang le tsona li ka netefatsoa hang feela ha mesebetsi ea lipatlisiso e entsoe, ts'ebeliso ena e tsepamisitse maikutlo holim'a liphatlalatso tsa meralo ea motheo (libaka tsa buffer) ho kenyetse tlhahlobo e pharaletseng ea sebaka sohle sa boithuto. Ka ts'ebetso ena, libaka life kapa life tseo ho sa tsamaeeng ho tsona kapa libaka tse hlokolosi haholo li tla hlalosoa, 'me ho khethoe mehato e nepahetseng ea phokotso moo ho hlokahalang. 'Mapa o bonts'ang liphatlalatso tsa lits'ebetso o kenyelelitsoe leqepheng la 8 la BID ena molemong oa ho u thusa.

Ntlafatso e felletseng ea liliba e tla kenyetse mekhahlelo e 3/lihlopha tse 3 tsa liliba tseo ka tsona ho tla etsoa lipatlisiso le ho cheka. Mokhahlelo oa pele o tla shebana le ~ Limilone tse 15 tsa Maoto a Maemo a Maemo a Maemo ka Letsatsi la khase (MMSCFD) e lateloe ke mokhahlelo oa bobeli oa ~ 30 MMSCFD mme qetellong e be mohato oa boraro oa ~ 45 MMSCFD. Kaho ea marang-rang a pokello ea khase (ho kenyeletsoa liphaephe, liteishene tsa booster le compressor, joalo-joalo) e reretsoe ho qala ka ~ Mots'eanong 2023 mme e phetheloe ka ~ Tšitoe 2023. Kaho ea polante ea LNG/LHe le meaho e amanang le eona e reretsoe ho qala ~ Tlhakubele 2023 mme e phetheloe ka ~ Hlakola 2025. Nako ea ts'ebetso (tlhahiso ea khase) bakeng sa projeke ke lilemo tse ka bang 20 (~2025 ho isa ~ 2045).

LITLHOKO TSA MOLAO

Morero o sisintsoeng o hloka litumello tse itseng, litumello, litumello, le/kapa lilaesense. Litlhokahalo tse latelang li se li khethiloe mothating ona mme mesebetsi e meng e kanna ea tsejoa kamora lipuisano tsa pele ho kopo:



Melao e Amanang	Mesebetsi e thathamisoeng kapa lintho tse susumetsang	Tlhoko ea tumello, tumello, laesense, kapa tumello:
Khaolo ea 5 ea NEMA	GNR 983 (2014, jwaloka ha e fetotswe): Ketsahalo ya 21D: Ketsahalo efe kapa efe e kenyeletsang tshebetso ya ketso eo e hlokgang tokiso kapa phapano ya tokelo kapa phemiti ho ya ka karolo ya 102 ya Molao wa Ntshetsopele ya Mehlodi ya Diminerale le Petroleum, mmoho le tse ding. ts'ebetso e sebetsang e fumanehang ho Tsebiso ea Lethathamo kapa ho Tsebiso ea Lethathamo la 3 ea 2014, e hlokehang bakeng sa tokiso e joalo.	Tumello ea Tikoloho (EA)
Khaolo ea 5 ea NEMA	GNR 984 (2014, joalo ka ha e lokisitsoe): Ketsahalo ea 15: Ho hloekisoa ha sebaka sa lihokthere tse 20 kapa ho feta moo ho nang le limela tsa sebaka seo, ho sa kenyeletsoe moo ho hlokehang ho hloekisoa ha limela tsa matsoalloa (i) ho etsa ts'ebetso e tsoanang; kapa (ii) merero ea tlhokomelo e entsoeng ho latela moralo oa tsamaiso ea tlhokomelo.	Tumello ea Tikoloho (EA)
Khaolo ea 5 ea NEMA	GNR 983 (2014, jwalo ka ha e fetotswe): Ketsahalo ya 34: Katoloso ya meaho e teng kapa meralo ya motheo bakeng sa tshebetso kapa ketsahalo efe kapa efe moo katoloso e jwalo e tla baka tlhokeho ya phemiti kapa laesense kapa phemiti e fetotsweng kapa laesense ho ya ka molao wa naha kapa wa provense. e laolang ho lokolloa ha meso, litšila kapa tšilafalo, ho sa kenyeletsoe- (i) moo setsi, meralo ea motheo, tšebetso kapa tšebetso e kenyelelitsoeng lethathamong la mesebetsi ea taolo ea litšila e phatlalalitsoeng ho latela karolo ea 19 ea Molao oa Naha oa Taolo ea Tikoloho: Waste Act, 2008 (Molao oa 59 oa 2008) moo Tsamaiso ea Naha ea Tikoloho: Waste Act, 2008 e sebetsa; (ii) katoloso ya disebediswa tse teng kapa meralo ya motheo bakeng sa ho hlwekiswa ha litšila, metsi a litšila, metsi a silafetseng kapa likhoerekhoere moo matla a tla eketsoa ka tlase ho li-cubic metres tse 15 000 ka letsatsi; kapa (iii) katoloso e amana ka kotloloho le lits'ebetso tsa temo ea metsing kapa meralo ea motheo moo matla a ho qhala metsi a litšila a tla eketsoa ka 50 cubic metres kapa ka tlase ho letsatsi.	Tumello ea Tikoloho (EA) le tokiso ea License ea Mohaho oa Atmospheric (AEL)
NEMWA GN 921	GN 921 (2013) Sehlopha sa B11: Ho thehwa kapa tokiso ya setoko sa masalla kapa masalla a depositi a bakoang ke mesebetsi e hlokgang tokelo ya merafo, tokelo ya ho hlahloba kapa tokelo ya tlhahiso ho ya ka Molao wa Ntshetsopele ya Mehlodi ya Diminerale le Petroleum, 2002 (Molao wa 28). ea 2002).	Laesense ea Tsamaiso ea Litšila (WML)
Karolo ea 21 ea NWA	Karolo ea 21(c&i): ho sitisa kapa ho khelosa phallo ea metsi ka har'a kotopo le/kapa ho fetola bethe, mabōpo, tsela kapa litšobotsi tsa tsela ea metsi.	License ea Tšebeliso ea Metsi (WUL)

Ka lebaka la ho hlhlehletsa liphelelo tse ka holimo, ho na le tlhokahalo ea ho etsa Tsamaiso ea Tekolo ea Impact ea Tikoloho (EIA) ka tšebetso e felletseng ea Scoping le Environmental Impact Assessment (EIA). EIA e tla etsoa ho latela litlhoko tsa Melawana ea NEMA EIA (GNR982, 2014 joalo ka ha e lokisitsoe) 'me ho tla lateloa ts'ebetso e kopaneng ea kopo ea Laesense ea Taolo ea Tsamaiso ea Litšila. Liketso tse ling tse thathamisoeng tlas'a NEMA, NEMAQA, NEMWA le/kapa NWA li tla tsejoe nakong ea ts'ebetso.

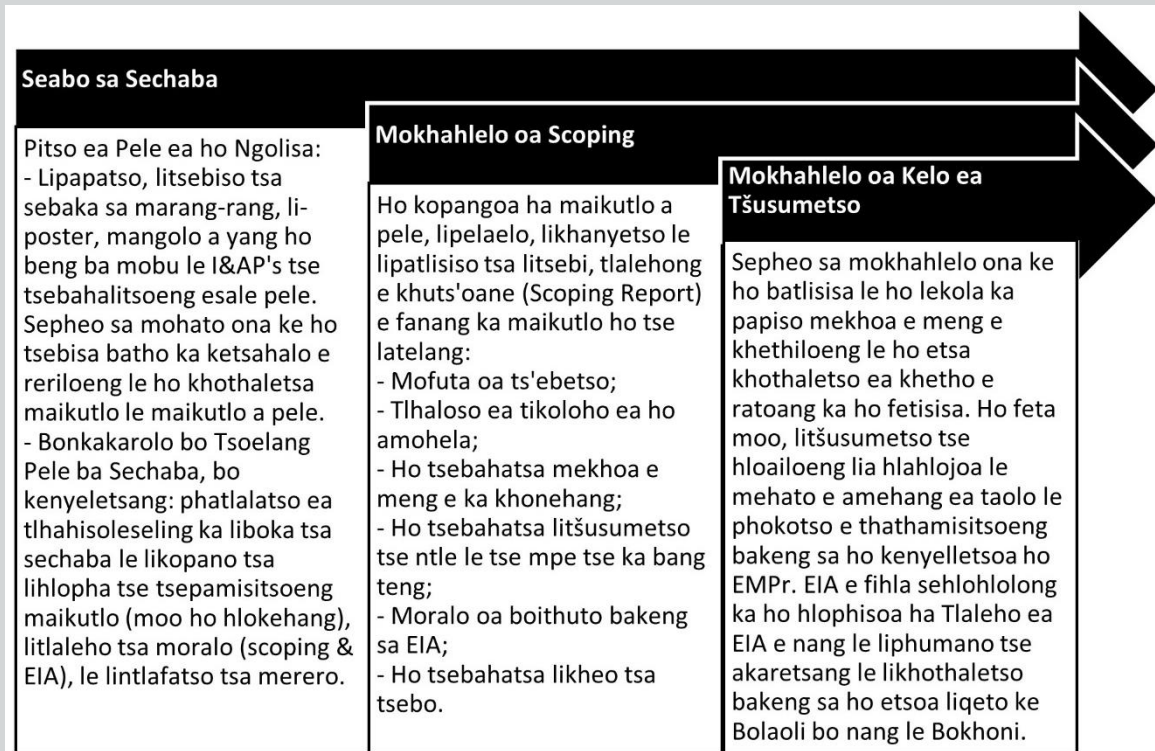


TSHEBETSO YA TLHAHLOBO YA TSHOSOMETSO

Ts'ebetso ea EIA ke sesebelisoa sa moralo le ho etsa liqeto, ho hlalosa le ho lekola litlamorao tsa 'mele, tsa baeloji, tsa sechaba, le moruo tseo nts'etsopela kapa morero o itseng li ka bang le tsona. Ho tseba ho tsebahatsa tšebetso ea ho etsa liqeto, ho bohlokoa hore litaba le matshwenyeho a sechaba a khethoe ka nako, ho nolofalletsa sehlopha sa EIA ho li hlahloba.

Tshebetso ya EIA e dumella ditlamorao tsa tikoloho tsa morero o sisintsweng hore di hlwauwe pele, di fuputswe nakong yohle ya tshepetso ya kgahlamelo, le ho nkelwa hloohong ke ba bohlong ba etsang diqeto. EAP le litsebi tse fapaneng li boetse li hloaea litšusumetso tse mpe le tse ntle tse ka hlahang ka lebaka la projeke e sisintsoeng le ho hloaea mehato e sebetsang ea phokotso e hlokalang, ho qoba kapa ho fokotsa litlamorao tse mpe le ho matlafatsa litlamorao tse ntle.

Kakaretso e pharaletseng ea ts'ebetso ea EIA e fanoa ka tlase:



Hang ha lits'ebetso tse amehang li phethiloe 'me litokomane tsa ho qetela li rometsoe ho bolaoli bo nang le bokhoni, bolaoli bo nang le bokhoni bo hlahloba kopo ebe bo etsa qeto bo nang le tsebo. Ba I&APs ba tla tsebisoa ka qeto le tokelo ea bona ea ho etsa boipiletso haeba ba hanana le qeto eo.

LITŠOELETSO TSA TIKOLOHO

E 'ngoe ea lintho tse ka sehloohong tse etsang hore EIA e atlehe ke ho netefatsa hore litšusumetso tse ka bang teng (tse ntle le tse mpe) lia tsejoa le ho fuputsoa. Litšusumetso tse ling li ka 'na tsa hlokomeloa ke litsebi tse amehang 'me li tla kenyetsetsoa ke Sehlopha sa EIA e le ho hlahloba ka nepo le ka nepo litšusumetso tse na tse ka bang teng. Lits'ebetso tse 'maloa tse ka bang teng tikolohong tse amanang le morero o sisintsoeng li se li hloahloa. Litšusumetso tsa pele tse ka bang teng tse tla hlahlojoa tšebetsong ena ea EIA li kenyetsetsa har'a tse ling:

- Tšitiso ea ts'ebeliso ea mobu / mekhoha ea boipheliso e teng
- Tšenyho ea litsela tsa mapolasi le meaho e teng
- Tšebeliso e 'ngoe ea mobu
- Khiri le ntshetsopela ya moruo wa lehae
- Lerōle le Lerata
- Ho senyeha ha metsi a metsi
- Boleng ba metsi a ka holim'a lefatše
- Tšusumetso ea moruo
- Litšusumetso tsa boleng ba moea le boemo ba leholimo (Greenhouse Gas - GHG).
- Liphello tsa bophelo bo botle
- Litšusumetso tse bonoang
- Tšusumetso ea lefats'e le metsing
- Liphello tsa lefa le paleontological



tse boletsoeng ka holimo ha lia lokela ho nkoa e le tsona feela litlamorao tse tla tsejoa nakong ea ts'ebetso ea kopo. Ho ipapisitsoe le therisano ea sechaba, maikutlo a litsebi le litlahlobo tse felletseng, litlamorao tse ling li tla tsejoa le ho hlahlojoa.

Litšusumetso tsohle tse ka bang teng li tla tsejoa le ho hlahlojoa ho latela mokhoa oa tlhahlobo ea phello o tataisoang ke litlhoko tsa Melawana ea NEMA EIA. Mokhoa o pharaletseng oa mokhoa oa ho lekanya bohlokoa ke ho tseba kotsi ea tikoloho (ER) ka ho nahana ka sephetho (C) sa phello e 'ngoe le e 'ngoe (e kenyeletsang Tlhaho, Bolelele, Nako, Boholo, le Reversibility) le ho amahanya sena le monyetla/monyetla (P) ea tšusumetso e etsahalang. Sena se bolela kotsi ea tikoloho. Ho feta moo, lintlha tse ling tse kenyeletsang litlamorao tse ngata le monyetla oa tahlehelo e ke keng ea nkeloa sebaka ea lisebelisoa li sebelisoa ho fumana ntlha ea bohlokoa (PF) e sebelisoang ho ER ho fumana bohlokoa ba kakaretso (S).

Ho feta moo, ho ipapisitsoe le litšusumetso tse hloailoeng le litekanyetso tsa tsona, ho khothaletsoa mehato ea phokotso le taolo bakeng sa mokopi, 'me tsona li kenyeletsoe Lenaneong la Tsamaiso ea Tikoloho (EMPr) mabapi le ho netefatsa hore litlamorao life kapa life tse ke keng tsa qojoa lia fokotsoa le ho laoloa, le litlamorao tse ntle. phahamisitsoe.

Lithuto tsa litsebi li tla sebelisoa ho tataisa le ho tsebisa tlhahlobo ea litlamorao tse ka bang teng. Lithuto tsa litsebi tse hloailoeng ho kenyeletsoa tlhatlhobong ena li bonts'itsoe ka tlase mme lithuto tse ling li ka tsejoa nakong ea ts'ebetso:

- Tekolo ea Tšusumetso ea Matla a Temo le Hydrogeology
- Boleng ba Moea, Phetoho ea Tlalaemete, Kotsi ea Bophelo bo Botle & GHG
- Boithuto ba Moruo le Tekolo ea Tšusumetso
- Ntlafatso ea Phano ea Lichelete
- Tekolo ea Tšusumetso ea Geohydrology
- Tekolo ea Tšusumetso ea Lefa
- Tekolo ea Tšusumetso ea Hydrology
- Kelo ea Tšusumetso ea Lerata
- Tlhahlobo ea Tšusumetso ea Sechaba
- Tekolo ea Tšusumetso ea Mefuta-futa ea Lintho Tse phelang Lefatšeng
- Tekolo ea Tšusumetso e Ponoang
- Tekolo ea Tšusumetso ea Mobu le Metsing

MOKHOA OA HO KENYA

Haeba u bona eka u na le thahasello, kapa u angoa ke morero ona, ho bohlokoa hore u ingolise u le Mokha o Nang le Thahasello (I&AP) moo u tla tsebisoa mabapi le projeke le ho fuoa monyetla oa ho nka karolo ho eona. mokhoa. Ka kopo hlokomela hore ke li-I&APs tse ngolisitsoeng feela tse tla kenyeletsoa mangolong a kamoso mabapi le morero le lintlafatso tse amanang le ona. O ka ingodisa le/kapa wa fana ka maikutlo jwaloka I&AP ka efe kapa efe ya mekgwa e latelang:

- Tlatsa foromo ea ngoliso ea I&AP le lethathamo la lipotso ebe u li khutlisetsa ho EIMS ka imeile, fax kapa poso;
- Romela maikutlo a ngotsweng, boingodiso, kapa dikopo ho EIMS ka imeile, fax kapa poso; le/kapa
- Ka mohala.

Ho bohlokoa ho hlokomela hore ts'ebetso ea EIA e tataisoa ke linako tse behiloeng ke molao, ka hona, e le ho etsa bonnete ba hore o tsoela pele ho kenya letsoho mosebetsing ona, re kopa hore likopo tsa hau tsa boingoliso le maikutlo afe kapa afe a pele a romelloe ho EIMS (lintlha tsa puisano li fano). ka tlase) pele ho **la 21 Phuptjane 2022**. Lingoliso li ntse li tla amoheloa kamora letsatsi lena ho fihlela qetellong ea ts'ebetso ea EIA. Ka ho ingolisa joalo ka mokha o nang le thahasello le o amehang, o lumela ho bokelloa le ho sebetsoa ha tlhahisoleseling ea hau ho latela Tsebiso ea Lekunutu ea EIMS e fumanehang ho www.eims.co.za/public-participation.

Ka kopo hlokomela hore ho ea pele ho tse ka holimo, bohle ba I&APs ba ngolisitsoeng le bona ba tla tsebisoa ka nako ea monyetla ea ho nka karolo, hammoho le boteng ba Scoping le Litlaleho tsa EIA, EMPr le lithuto tsa litsebi moo maikutlo a tla kopuoa.

Environmental Impact Management Services (Pty) Ltd (EIMS)

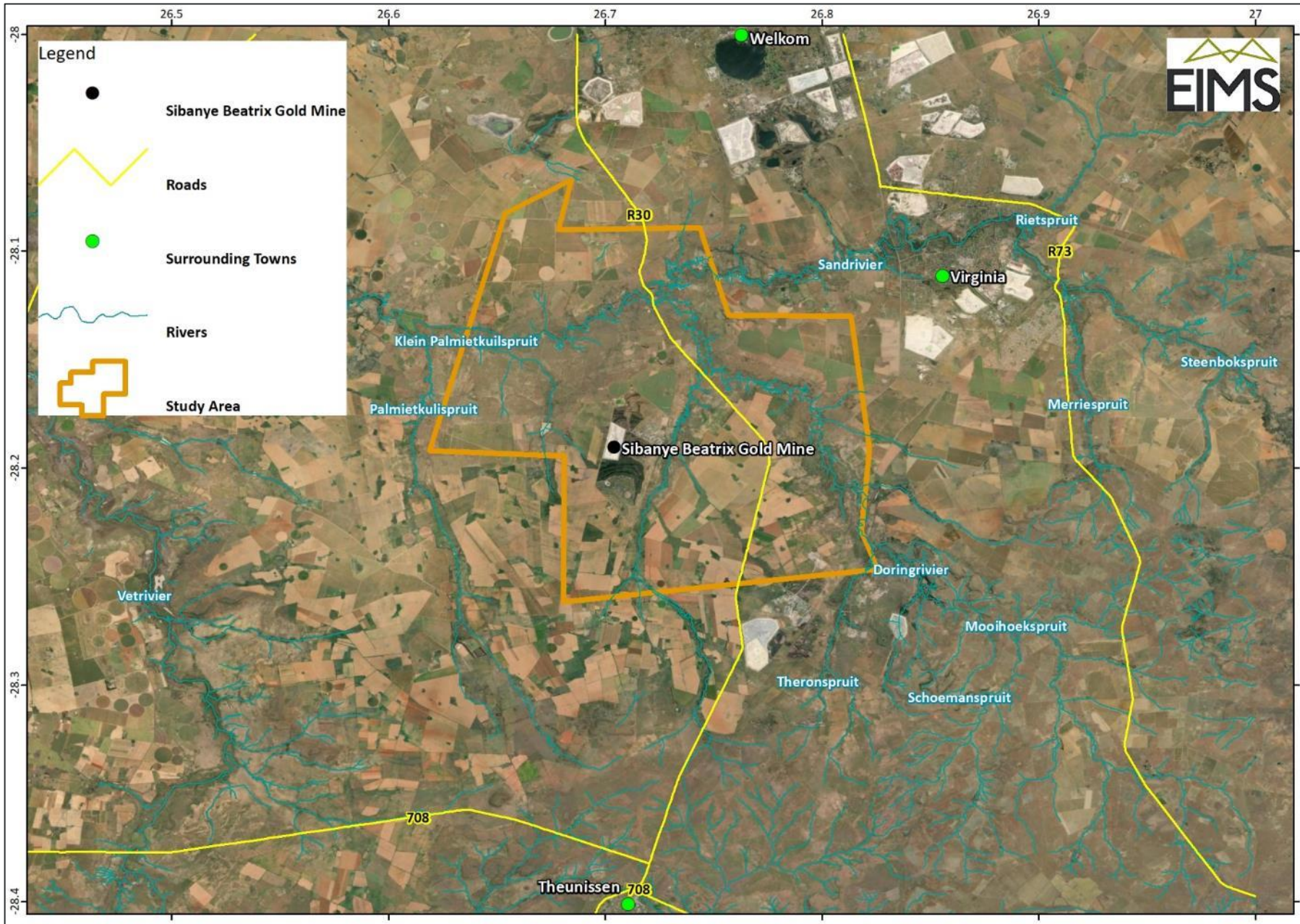
ikopanyang le eena : Qaphela Magaqa

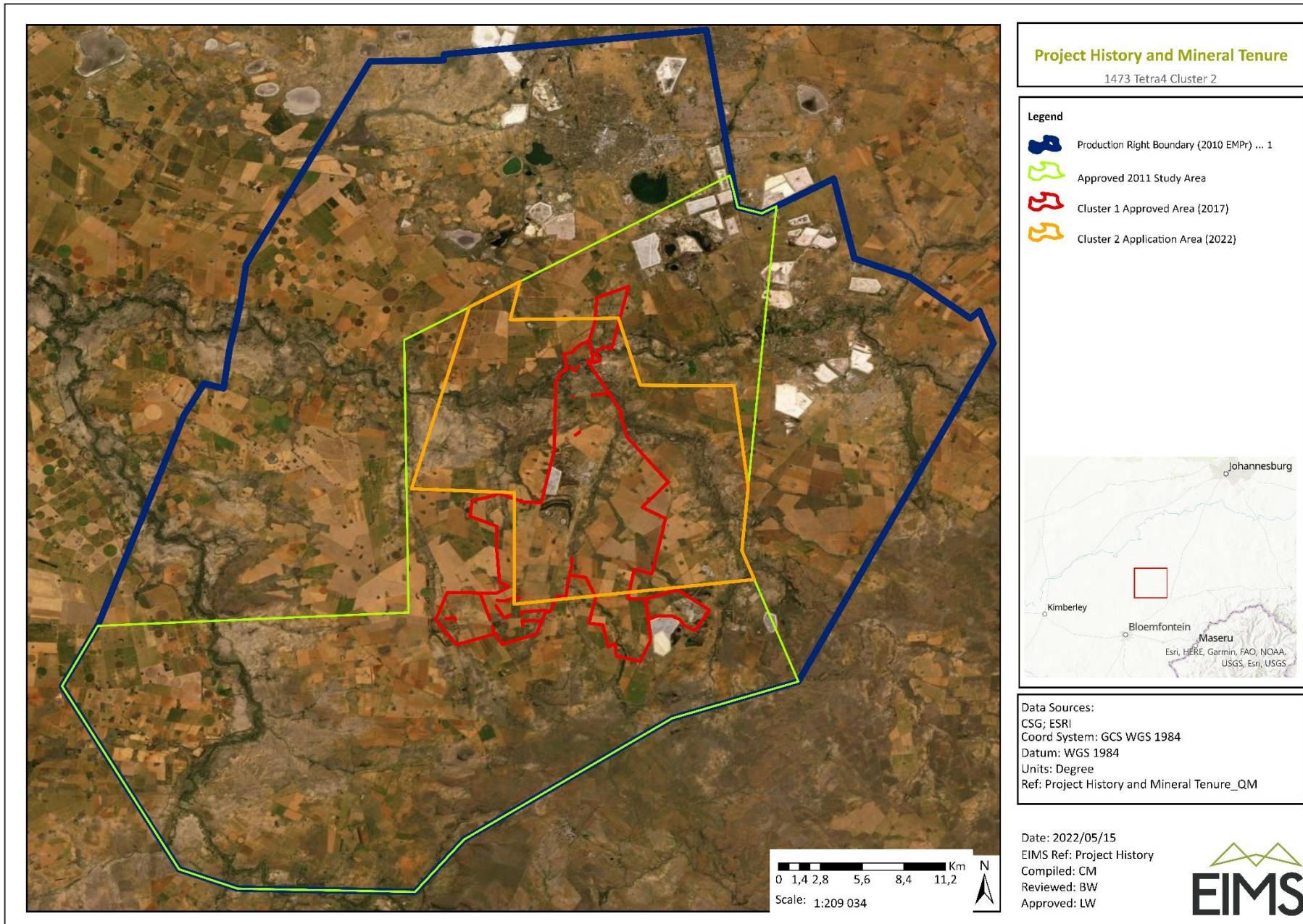
Nomoro ea Tšupiso ea EIMS: 1473

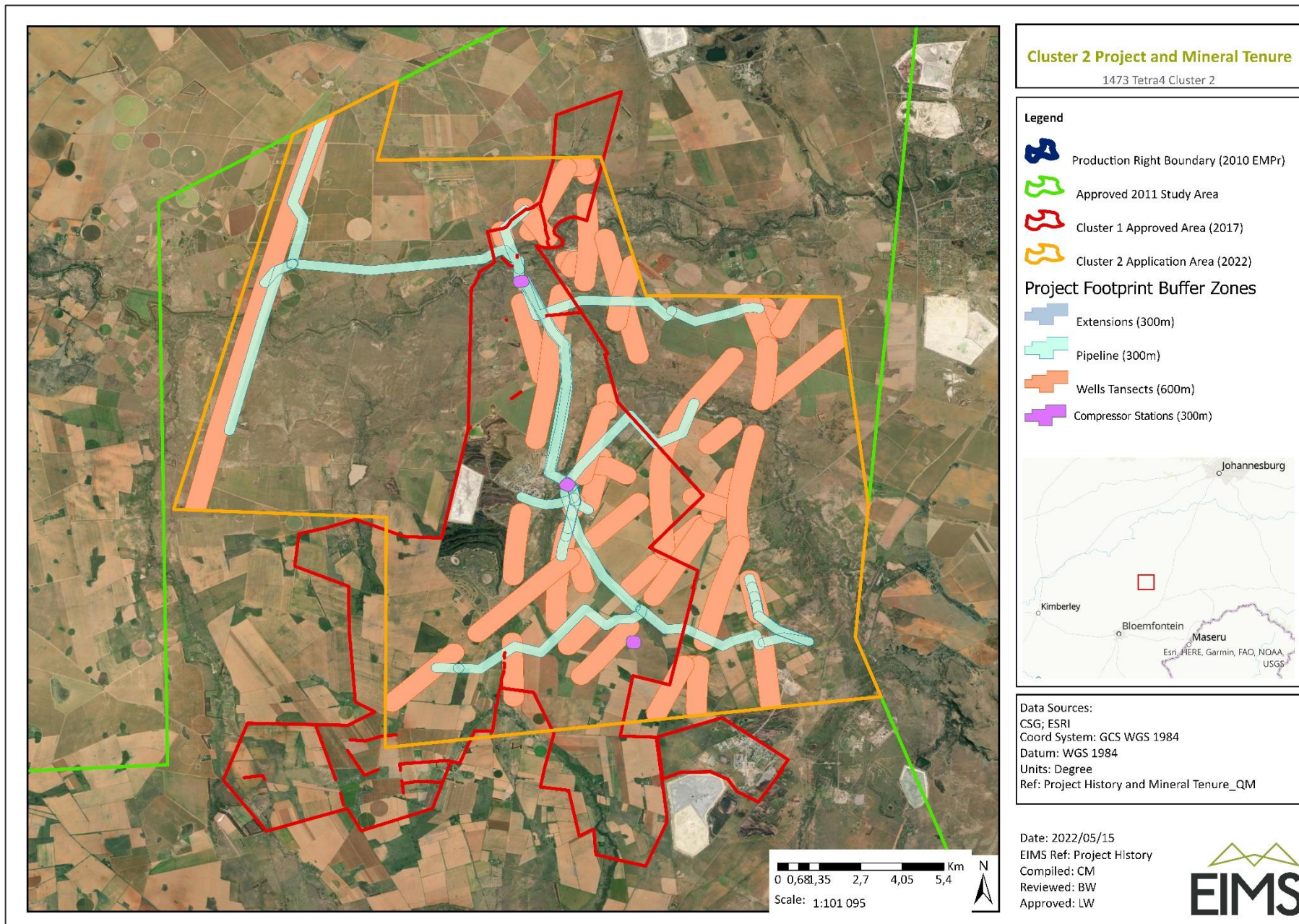
Aterese ea Poso: PO Box 2083; Pinetown; 2123

Mohala: (011) 789 7170/ Fax: (086) 571 9047

E-mail: tetracluster2@eims.co.za



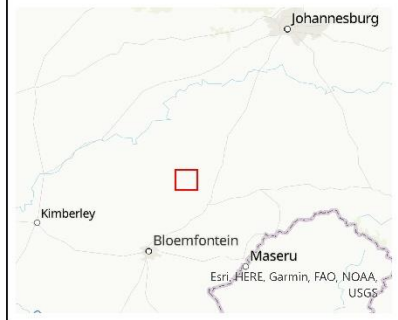




Cluster 2 Project and Mineral Tenure

1473 Tetra4 Cluster 2

- Legend**
- Production Right Boundary (2010 EMPr)
 - Approved 2011 Study Area
 - Cluster 1 Approved Area (2017)
 - Cluster 2 Application Area (2022)
- Project Footprint Buffer Zones**
- Extensions (300m)
 - Pipeline (300m)
 - Wells Tansects (600m)
 - Compressor Stations (300m)



Data Sources:
CSG; ESRI
Coord System: GCS WGS 1984
Datum: WGS 1984
Units: Degree
Ref: Project History and Mineral Tenure_QM

Date: 2022/05/15
EIMS Ref: Project History
Compiled: CM
Reviewed: BW
Approved: LW

