

LEGEND	
	PROPOSED RETAIL PARK BOUNDARY (EIA AREA 54.0 HECTARES)
	PROPOSED DSW WASTE TRANSFER STATION RELOCATION
	EXISTING DSW WASTE TRANSFER STATION TO BE RELOCATED
	WETLAND DELINEATION
	WETLAND BUFFER (30m)



CORNUBIA RETAIL PARK
GENERAL LAYOUT











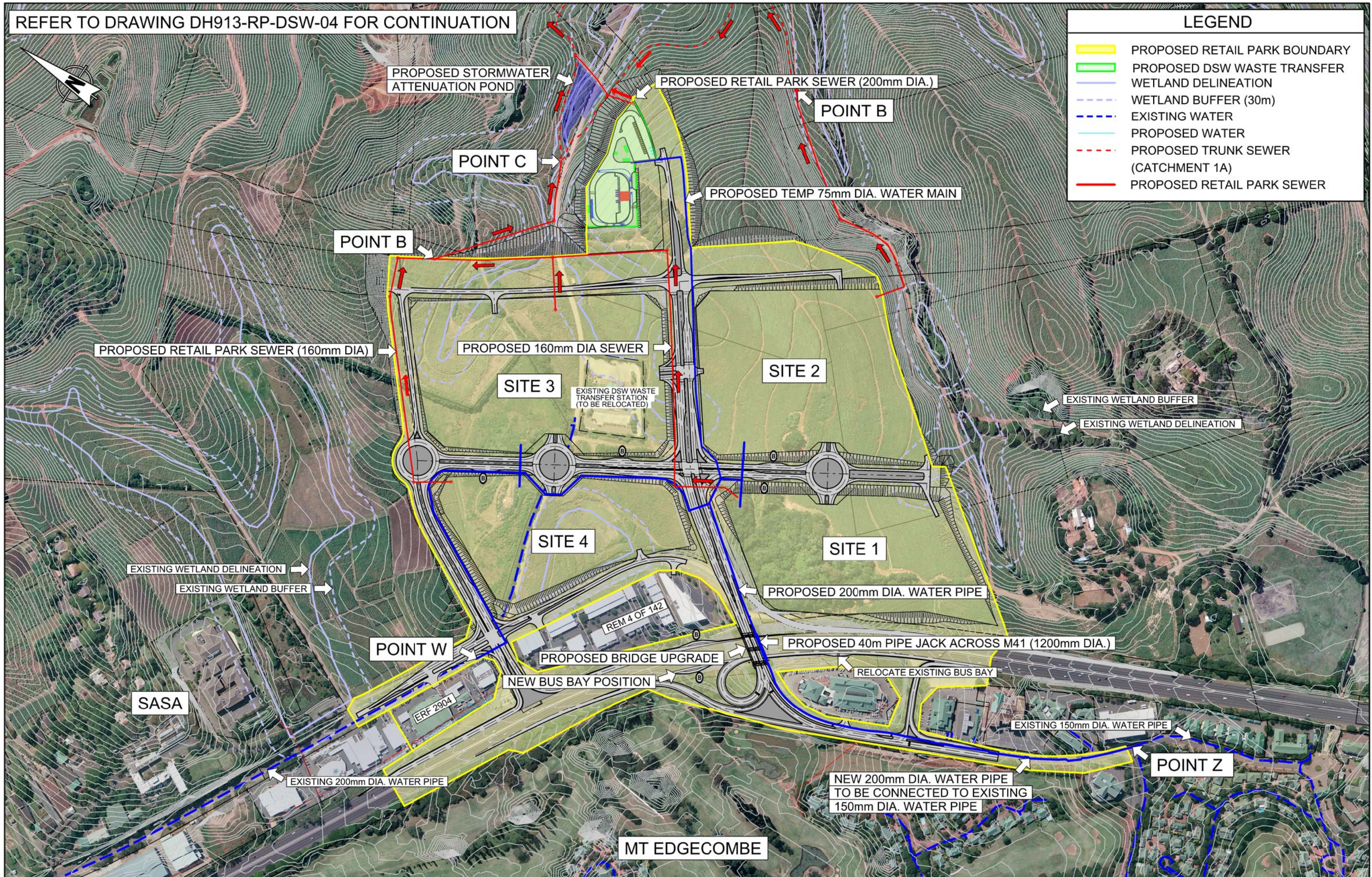
Client
Tongaat Hulett
DEVELOPMENTS

Scale 1:3 500
Sheet 1
Date 06/05/2013
Drawing No DH913-RP-EIA-01

FIG 1

REFER TO DRAWING DH913-RP-DSW-04 FOR CONTINUATION

LEGEND	
	PROPOSED RETAIL PARK BOUNDARY
	PROPOSED DSW WASTE TRANSFER
	WETLAND DELINEATION
	WETLAND BUFFER (30m)
	EXISTING WATER
	PROPOSED WATER
	PROPOSED TRUNK SEWER (CATCHMENT 1A)
	PROPOSED RETAIL PARK SEWER

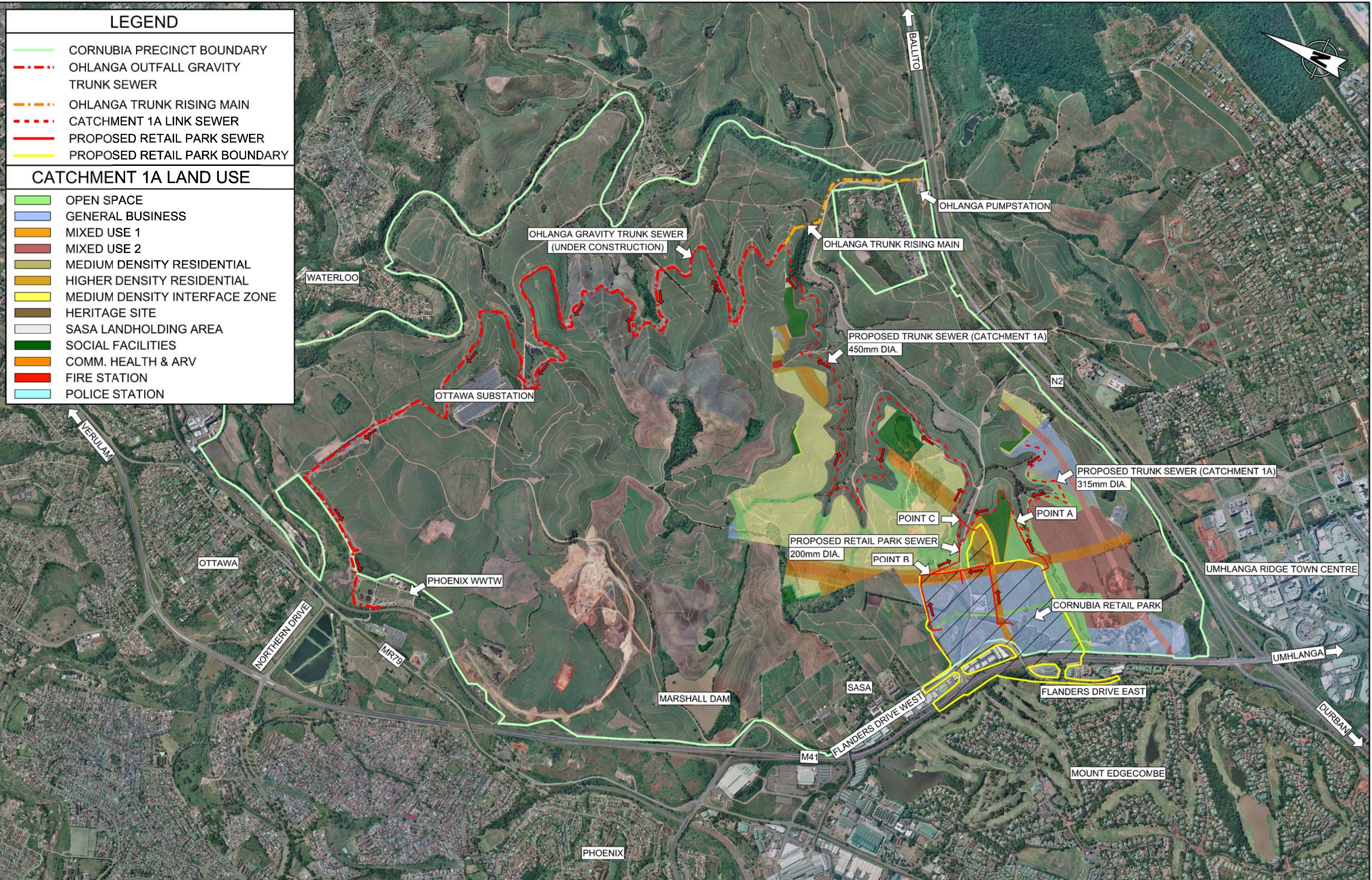


CORNUBIA RETAIL PARK
SERVICES LAYOUT

Client
Tongaat Hulett
DEVELOPMENTS

Scale	Sheet	Date
1:5 000	1	06/05/2013
Drawing No		
DH913-RP-SERV-01		

FIG
2



LEGEND

- CORNUBIA PRECINCT BOUNDARY
- - - OHLANGA OUTFALL GRAVITY TRUNK SEWER
- - - OHLANGA TRUNK RISING MAIN
- - - CATCHMENT 1A LINK SEWER
- PROPOSED RETAIL PARK SEWER
- PROPOSED RETAIL PARK BOUNDARY

CATCHMENT 1A LAND USE

- OPEN SPACE
- GENERAL BUSINESS
- MIXED USE 1
- MIXED USE 2
- MEDIUM DENSITY RESIDENTIAL
- HIGHER DENSITY RESIDENTIAL
- MEDIUM DENSITY INTERFACE ZONE
- HERITAGE SITE
- SASA LANDHOLDING AREA
- SOCIAL FACILITIES
- COMM. HEALTH & ARV
- FIRE STATION
- POLICE STATION



CORNUBIA PRECINCT
RETAIL PARK SEWER

Client
Tongaat Hulett
 DEVELOPMENTS

Scale	Sheet	Date
1:20 000	1	06/05/2013
Drawing No		
DH913-RP-SEWER-01		

FIG
3