
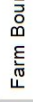
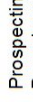
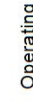
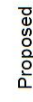








APPENDIX B: MAPS

MAP 1: REGIONAL LOCALITY MAP

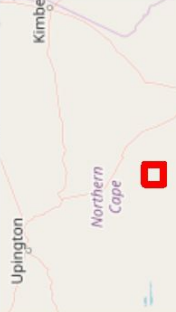
Orion Exploration
No. 5 – Prospecting Right

Legend

-  Powerline
-  Farm Boundaries
- PROSPECTING RIGHTS APPLICATION**
-  Prospecting Right Boundary
- OPERATING & PROPOSED DEVELOPMENTS**
-  Operating
-  Proposed
- ROAD NETWORK**
-  Main Road
-  Secondary Road
-  Railway line
- RIVERS & STREAMS**
-  Perennial River
-  Non-Perennial River
-  Wetlands

LOCALITY

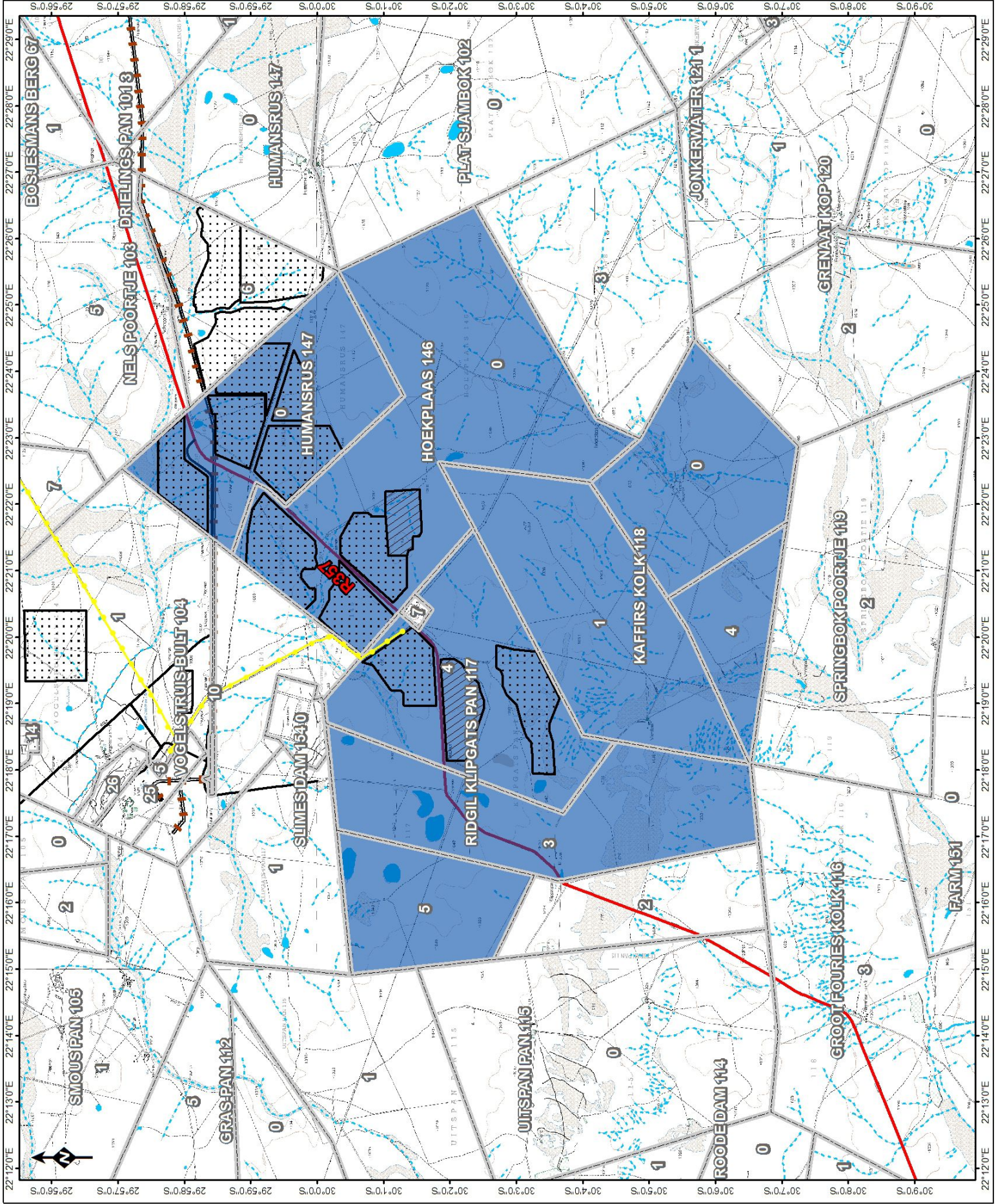
Scale: 1:96 326
Version: Final
Date: 2018/11/05



Reviewed: NH Cele
Environmental Scientist
Coordinates System: GCS WGS 1984
Datum: WGS 1984

Drawn by: P Furniss
GIS Specialist

© OneStepMap (Pty) Ltd
South Africa
contributors, CC-BY-SA



MAP 2: SENSITIVITY

MAP 3: CRITICAL BIODIVERSITY AND ECOLOGICAL SUPPORT AREAS

Orion Exploration No. 5 – Prospecting Right

Legend

- Farm Boundaries
- PROSPECTING RIGHTS APPLICATION**
- Prospecting Right Boundary
- CRITICAL BIODIVERSITY ASSESSMENT**
- Critical Biodiversity Area One
- Critical Biodiversity Area Two
- Ecological Support Area
- Other Natural Areas
- Protected Area
- ROAD NETWORK**
- Main Road
- Secondary Road
- Railway line
- RIVERS & STREAMS**
- Non-Perennial River

NC CRITICAL BIODIVERSITY AREAS

Reviewed by:
NH Cele
P Furniss
Environmental Scientist
GIS Specialist

Drawn by:
NH Cele
GIS Specialist

Coordinate System: GCS WGS 1984
Datum: WGS 1984

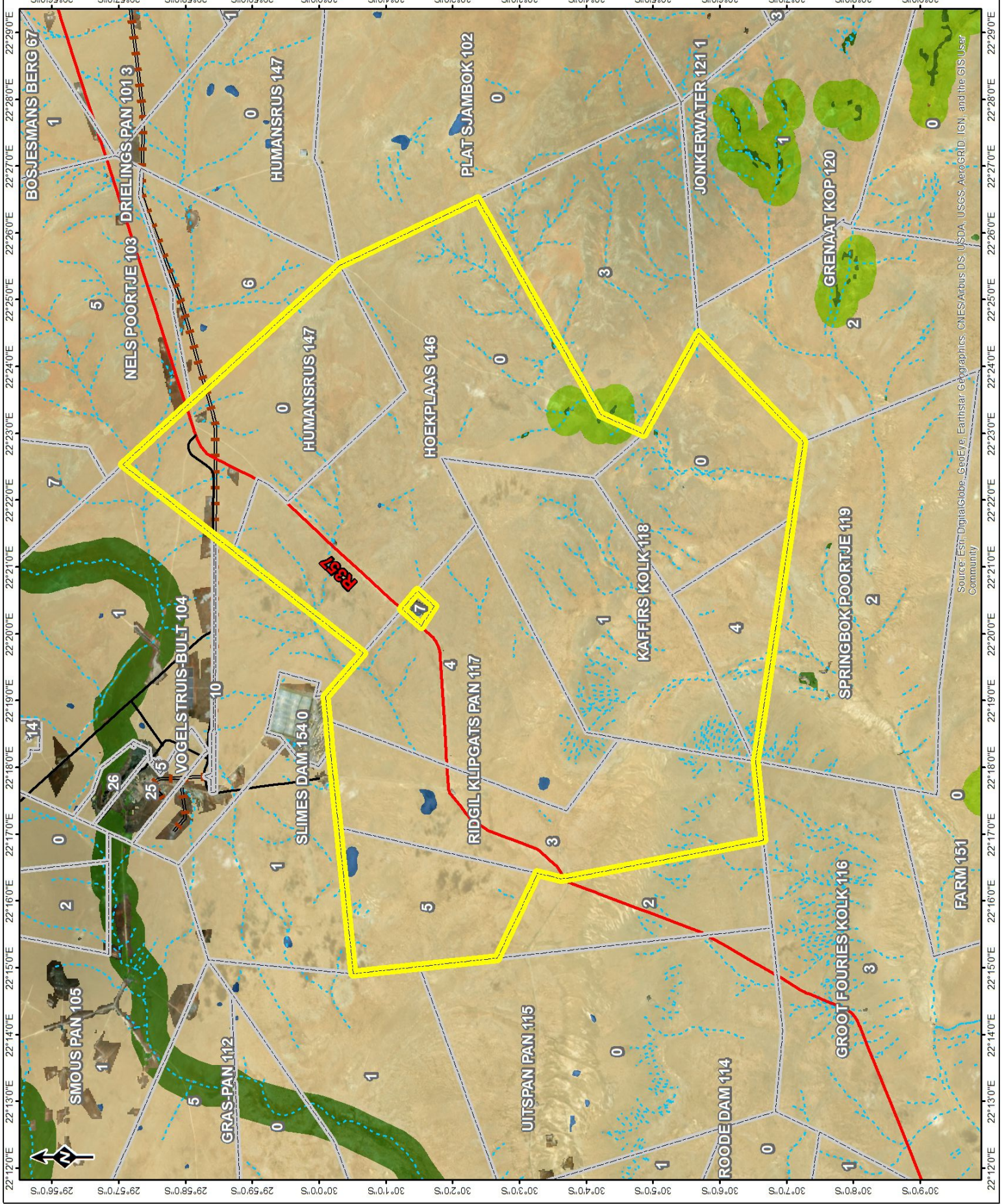
Scale: 1:96 326

Version: Final

Date: 2018/11/05

Kimberley
Upington
Northern Cape

© OneStepMap (a) and contributors, CC-BY-SA



Source: Esri, DigitalGlobe, GeoEye, Earthstar Geographics, CNES/Airbus DS, USDA, USGS, AeroGRID, IGN, and the GIS User Community

MAP 4: CURRENT LANDUSES

Orion Exploration
No. 5 – Prospecting Right

Legend

- Farm Boundaries
- PROSPECTING RIGHTS APPLICATION**
- Prospecting Right Boundary
- OPERATING & PROPOSED DEVELOPMENTS**
- Operating
- Proposed
- ROAD NETWORK**
- Main Road
- Secondary Road
- Other Access
- Railway line
- RIVERS & STREAMS**
- Perennial River
- Non-Perennial River
- LANDUSE**
- Wetlands
- Bare none vegetated
- Grassland
- Low shrubland

LANDUSE

Scale: 1:96 326
Version: Final
Date: 2018/11/05



© OneStepMap (Pty) Ltd
South Africa
contributors, CC-BY-SA

