

APPENDIX B: MAPS

MAP 1: REGIONAL LOCALITY MAP

Orion Exploration
No. 5 – Prospecting Right

Legend

- Farm Boundaries
- PROSPECTING RIGHTS APPLICATION**
- Prospecting Right Boundary
- OPERATING & PROPOSED DEVELOPMENTS**
- Operating
- Proposed
- ROAD NETWORK**
- Main Road
- Secondary Road
- Other
- Railway line
- RIVERS & STREAMS**
- Perennial River
- Non-Perennial River
- Wetlands

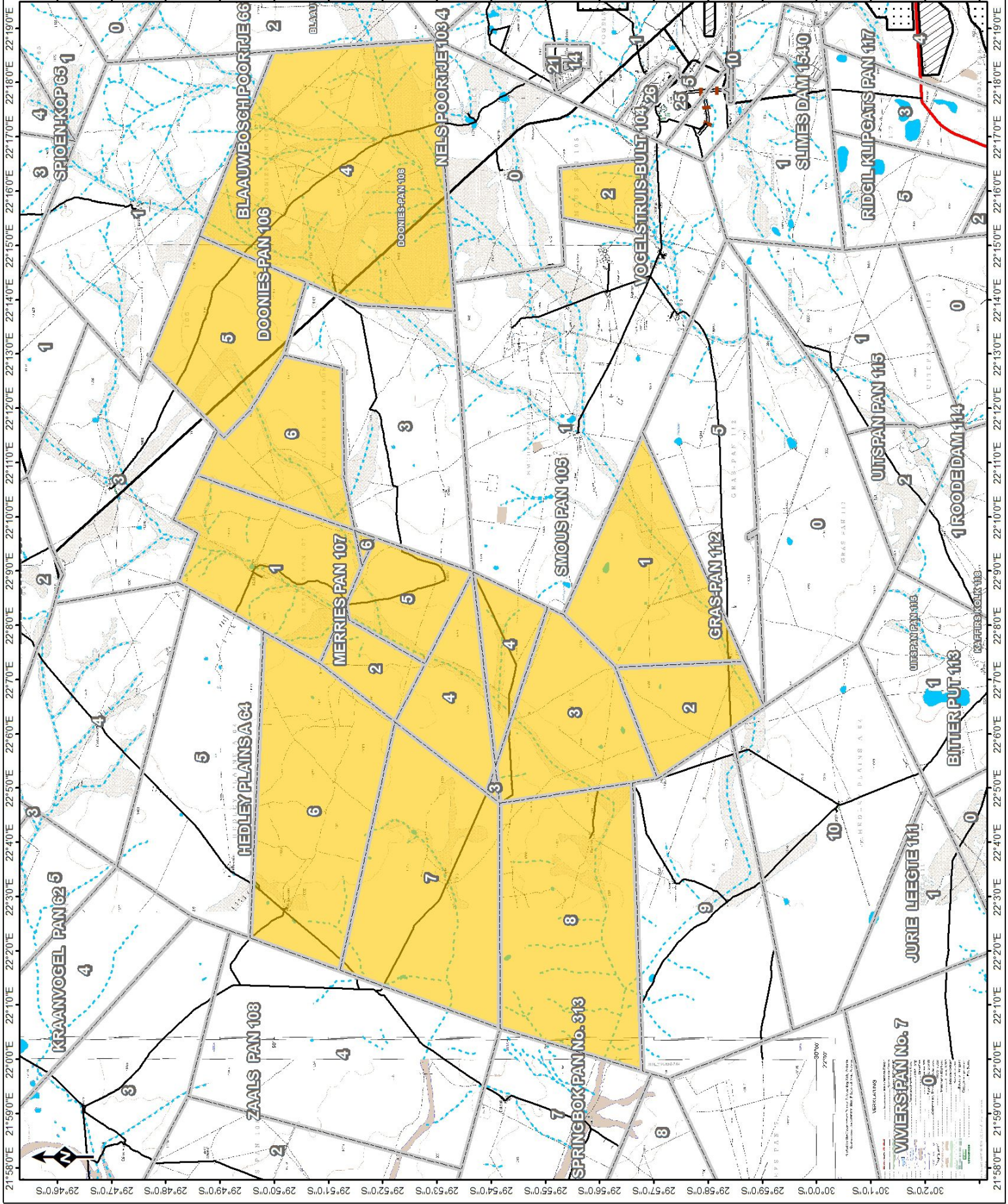
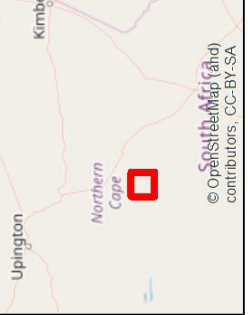
LOCALITY

Reviewed by:
NH Cele
P Furniss
Environmental Scientist
GIS Specialist

Coordinates System: GCS WGS 1984
Datum: WGS 1984

ABS Africa
Sustainability Advisors

Scale: 1:119,301
Version: Final
Date: 2018/11/06



VYVERS-PAN No. 7

VERKLARING

1. Hierdie aansoek is ingedien vir die toekenning van 'n vyverspanning aan die volgende persoon:

2. Die vyverspanning sal slegs gebruik word vir die volgende doeleindes:

3. Die vyverspanning sal slegs gebruik word vir die volgende doeleindes:

4. Die vyverspanning sal slegs gebruik word vir die volgende doeleindes:

5. Die vyverspanning sal slegs gebruik word vir die volgende doeleindes:

6. Die vyverspanning sal slegs gebruik word vir die volgende doeleindes:

7. Die vyverspanning sal slegs gebruik word vir die volgende doeleindes:

8. Die vyverspanning sal slegs gebruik word vir die volgende doeleindes:

9. Die vyverspanning sal slegs gebruik word vir die volgende doeleindes:

10. Die vyverspanning sal slegs gebruik word vir die volgende doeleindes:

11. Die vyverspanning sal slegs gebruik word vir die volgende doeleindes:

12. Die vyverspanning sal slegs gebruik word vir die volgende doeleindes:

13. Die vyverspanning sal slegs gebruik word vir die volgende doeleindes:

14. Die vyverspanning sal slegs gebruik word vir die volgende doeleindes:

15. Die vyverspanning sal slegs gebruik word vir die volgende doeleindes:

16. Die vyverspanning sal slegs gebruik word vir die volgende doeleindes:

17. Die vyverspanning sal slegs gebruik word vir die volgende doeleindes:

18. Die vyverspanning sal slegs gebruik word vir die volgende doeleindes:

19. Die vyverspanning sal slegs gebruik word vir die volgende doeleindes:

20. Die vyverspanning sal slegs gebruik word vir die volgende doeleindes:

MAP 2: SENSITIVITY

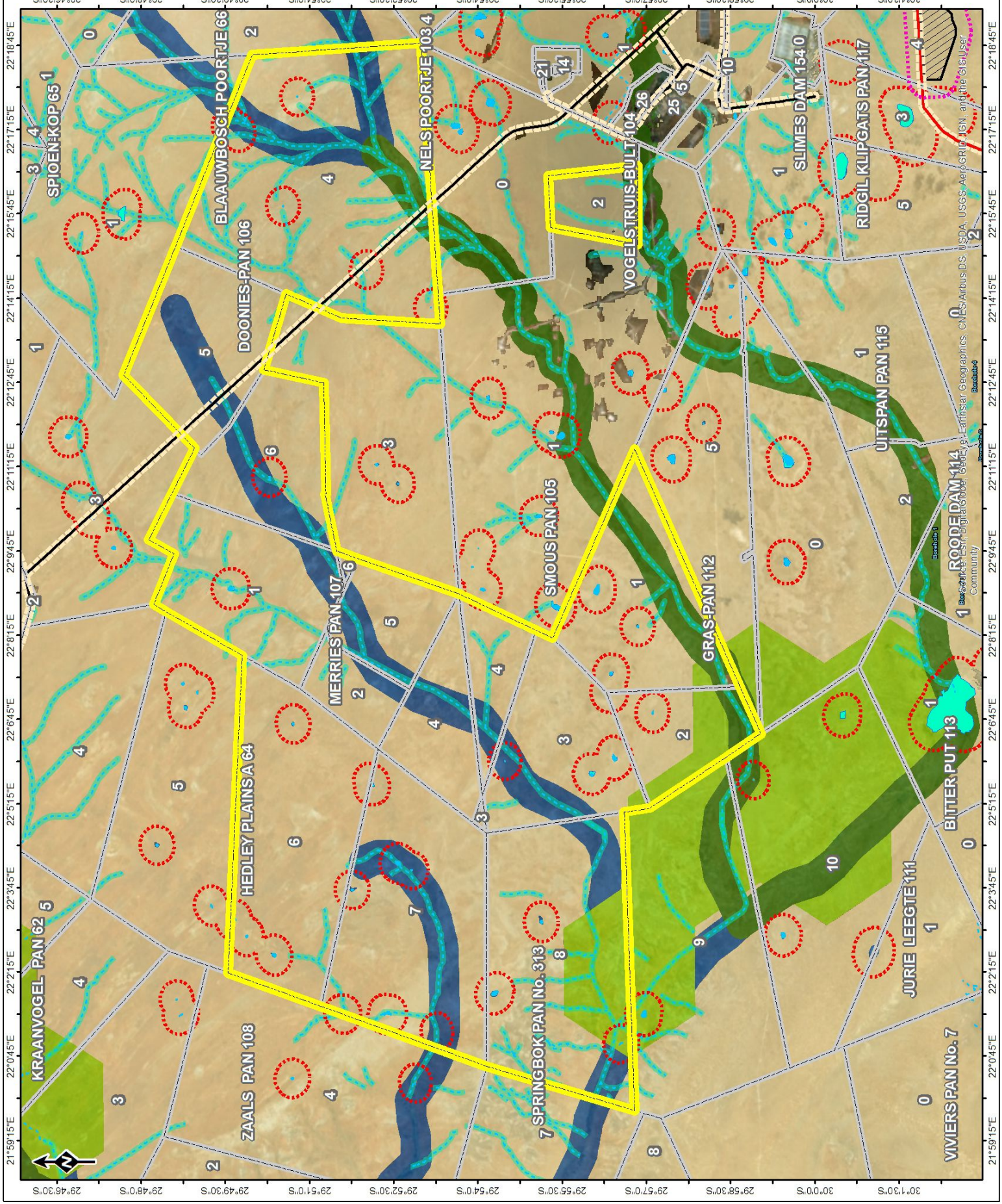
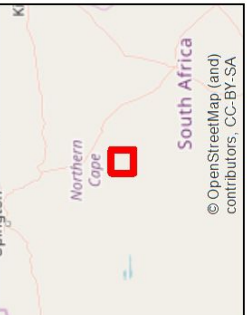
Orion Exploration No. 5 – Prospecting Right

Legend

- 500m C&I Buffer
- 100m Roads Buffer
- 500m Operating Solar Facility Buffer
- Farm Boundaries
- PROSPECTING RIGHTS APPLICATION
- Prospecting Right Boundary
- CRITICAL BIODIVERSITY ASSESSMENT
- Critical Biodiversity Area One
- Critical Biodiversity Area Two
- Ecological Support Area
- Other Natural Areas
- Protected Area
- OPERATING SOLAR FACILITY
- Operating
- RIVERS & STREAMS
- Non-Perennial River
- 100m GN704 Buffer
- Wetlands

Sensitivity Map

Scale: 1:114 576
Version: Final
Date: 2018/11/06



Reviewed: P Furniss Environmental Scientist
Drawn by: NH Cele GIS Specialist
Coordinate System: GCS WGS 1984
Datum: WGS 1984

MAP 3: CRITICAL BIODIVERSITY AND ECOLOGICAL SUPPORT AREAS

Orion Exploration No. 5 – Prospecting Right

Legend

- Farm Boundaries
- PROSPECTING RIGHTS APPLICATION**
- Prospecting Right Boundary
- CRITICAL ECOSYSTEM TYPE**
- Least threatened (Bushmanland Basin, Shrubland, Vloere, Arid Grassland, and Northern Upper Karoo)
- ROAD NETWORK**
- Main Road
- Secondary Road
- Railway line
- RIVERS & STREAMS**
- Non-Perennial River

CRITICAL ECOSYSTEM TYPE

Scale: 1:119,301

Version: Final

Date: 2018/11/05

Reviewed by: NH Cele, Environmental Scientist, GIS Specialist

Drawn by: P Furriss, Environmental Scientist, GIS Specialist

Coordinate System: GCS WGS 1984

Datum: WGS 1984

ABS Africa
Sustainability Advisors

Upington

Kimberley

Northern Cape

© OneStepMap (Pty) Ltd contributors, CC-BY-SA



Orion Exploration
No. 5 – Prospecting Right

Legend

- Farm Boundaries
- PROSPECTING RIGHTS APPLICATION**
- Prospecting Right Boundary
- CRITICAL BIODIVERSITY ASSESSMENT**
- Critical Biodiversity Area One
- Critical Biodiversity Area Two
- Ecological Support Area
- Other Natural Areas
- Protected Area
- ROAD NETWORK**
- Main Road
- Secondary Road
- Railway line
- RIVERS & STREAMS**
- Non-Perennial River

NC CRITICAL BIODIVERSITY AREAS

Scale: 1:119,301

Version: Final

Date: 2018/11/05

Reviewed by: P. Furniss, Environmental Scientist, GIS Specialist

Drawn by: M. Cele, GIS Specialist

Coordinate System: GCS WGS 1984

Datum: WGS 1984

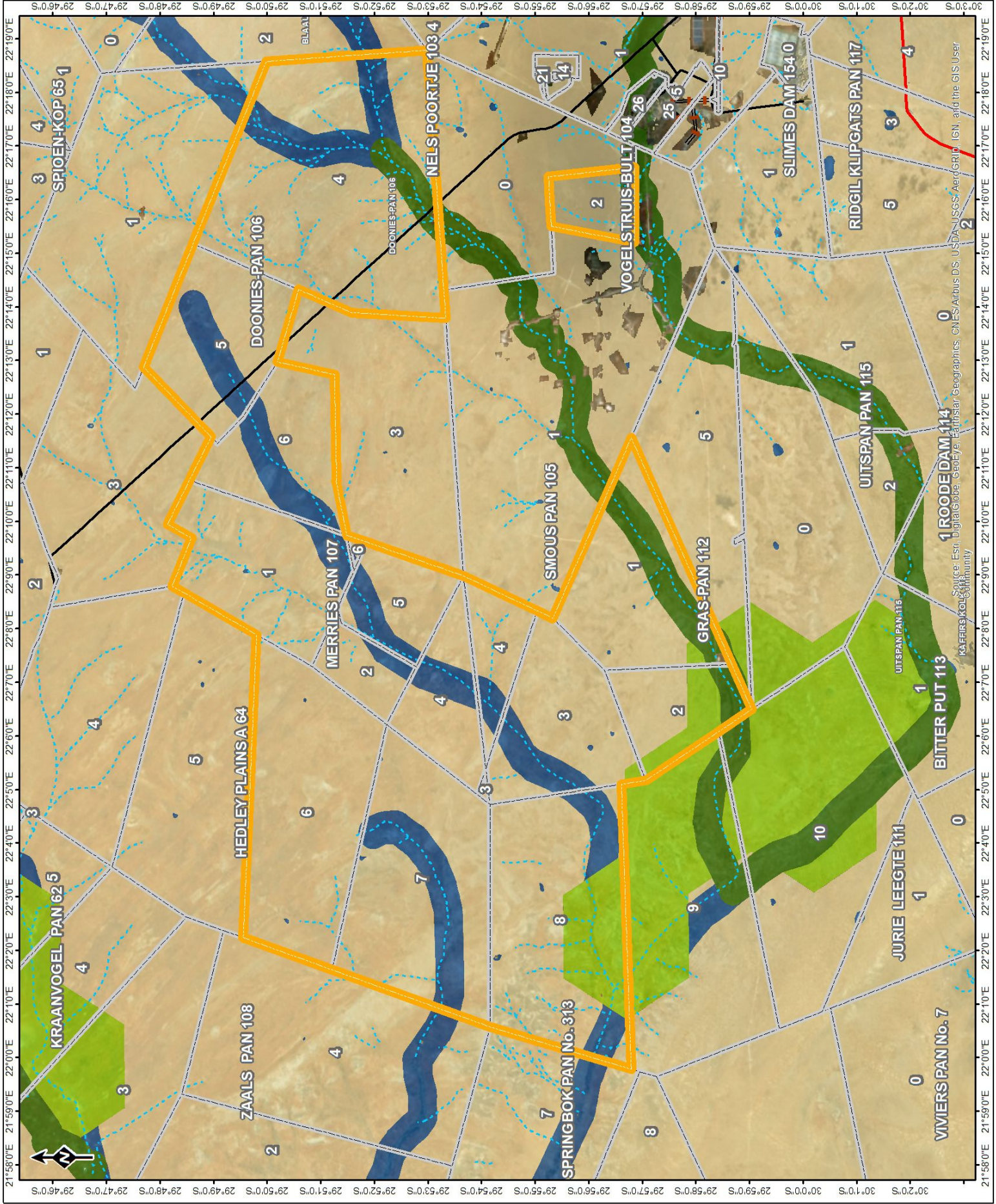
ABS Africa
 Sustainability Advisors

Uptington

Kimberley

Northern Cape

© OneStepMap (Pty) Ltd contributors, CC-BY-SA



Source: Esri, DigitalGlobe, GeoEye, Earthstar Geographics, CNES/Airbus DS, USDA, USGS, AeroGRID, IGN, and the GIS User Community

MAP 4: CURRENT LANDUSES

OPERATING & PROPOSED DEVELOPMENT
Exploration Prospecting Right
No. 5 Operating

PROSPECTING RIGHTS APPLICATION

- Proposed
- Farm Boundaries
- Prospecting Right Boundary

ROAD NETWORK

- Main Road
- Secondary Road
- Other Access
- Railway line

RIVERS & STREAMS

- Perennial River
- Non-Perennial River
- Wetlands

LANDUSE

- Bare none vegetated
- Grassland
- Low shrubland
- Woodland/Open bush

LANDUSE

Scale: 1:125 000
 Version: Final
 Date: 2018/11/06

ABS Africa
 Sustainability Advisors

Northern Cape
 South Africa

