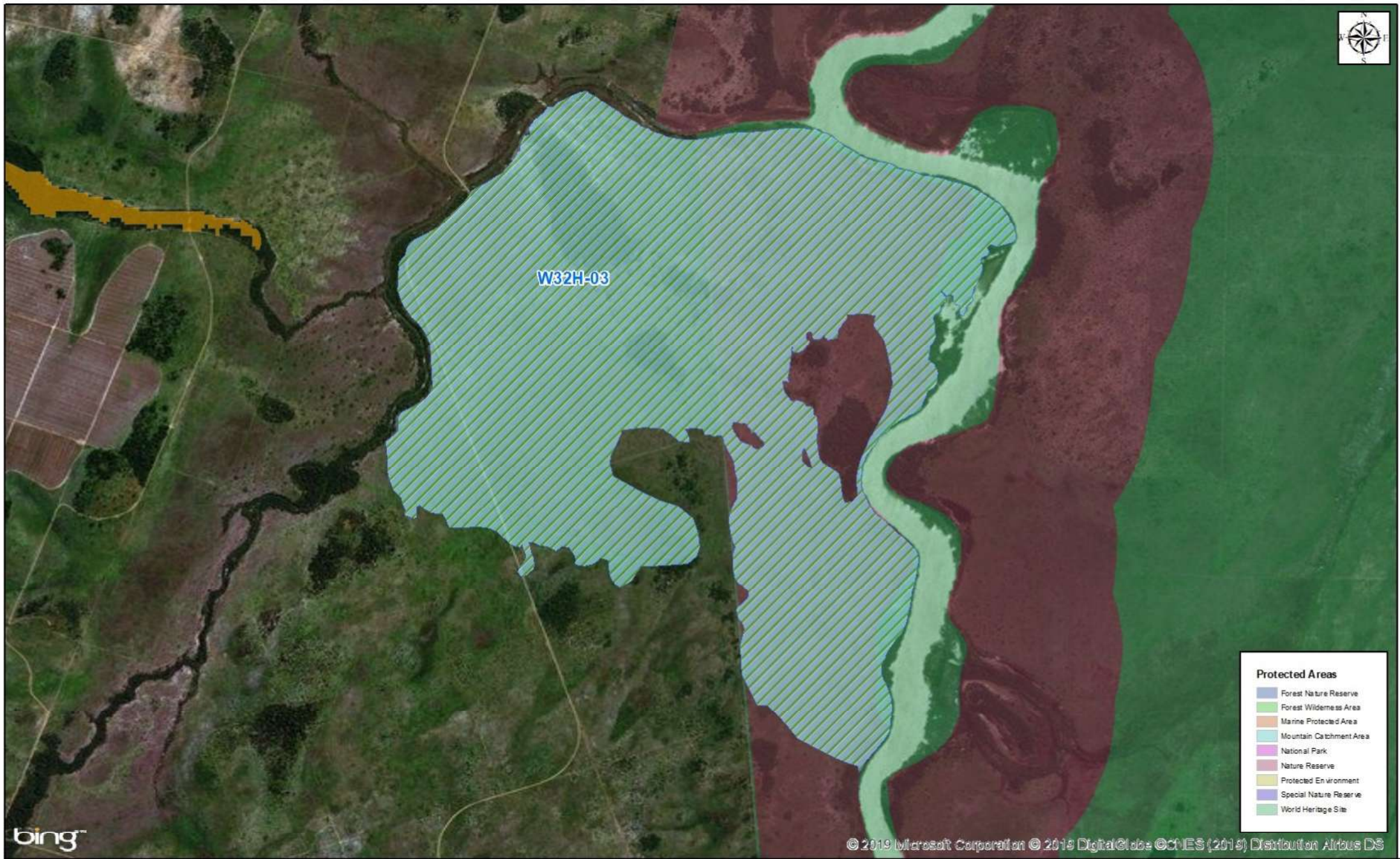


Appendix C

MAPS



bing™

© 2019 Microsoft Corporation © 2019 DigitalGlobe © CNES (2019) Distribution Airbus DS

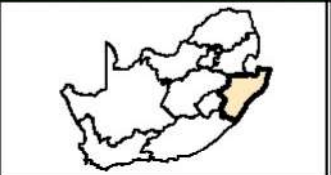
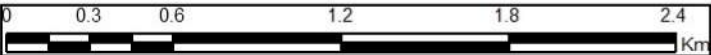
Protected Areas

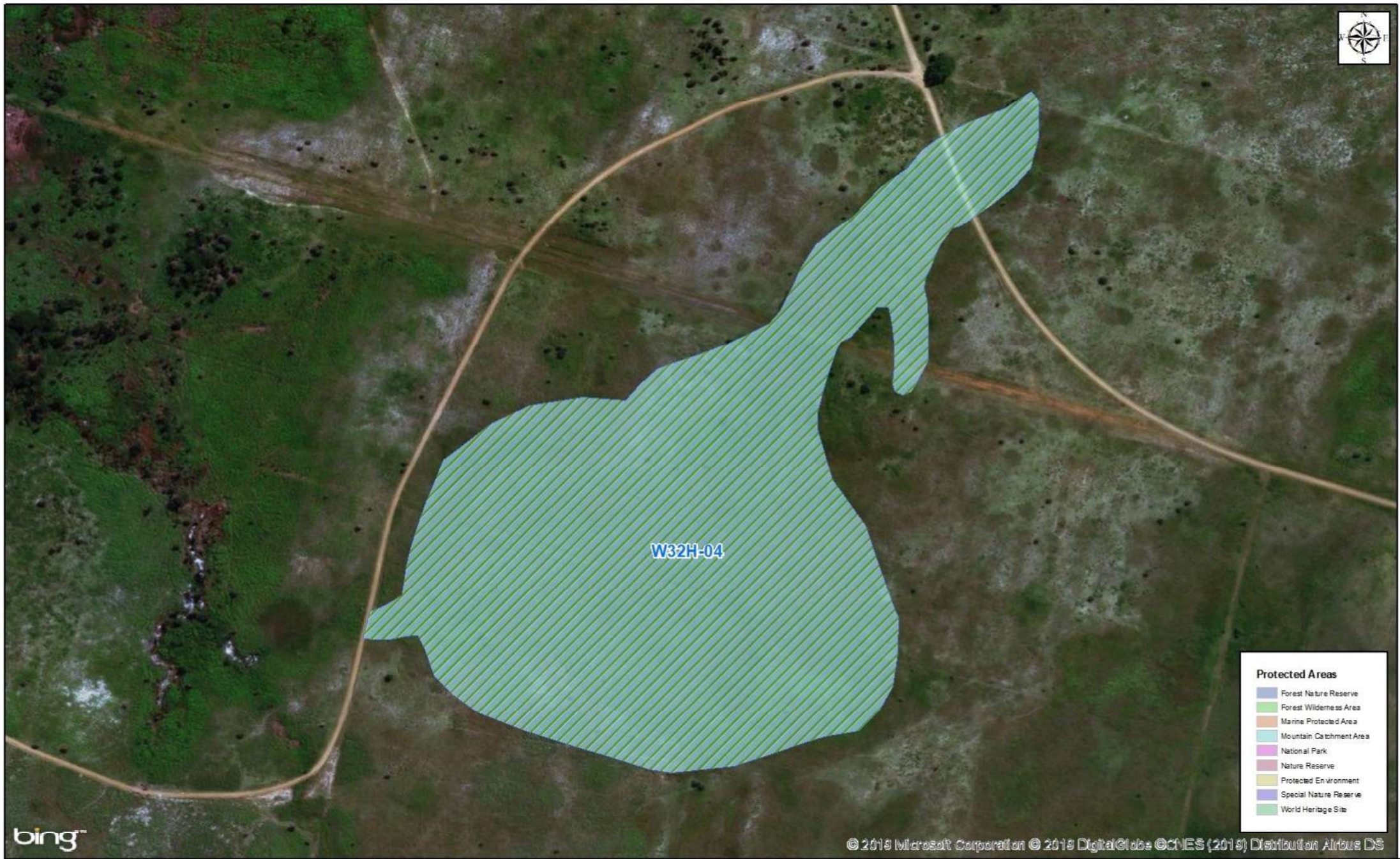
- Forest Nature Reserve
- Forest Wilderness Area
- Marine Protected Area
- Mountain Catchment Area
- National Park
- Nature Reserve
- Protected Environment
- Special Nature Reserve
- World Heritage Site

Critical Biodiversity Areas

CBA1	Degraded	ESA2
CBA2	ESA1	Protected
		Other

KwaZulu-Natal W32H-03





bing™

© 2019 Microsoft Corporation © 2019 DigitalGlobe © CNES (2018) Distribution Airbus DS

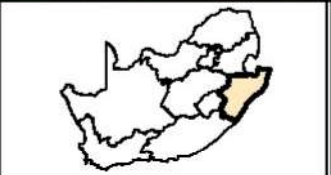
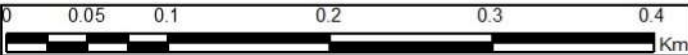
Protected Areas

- Forest Nature Reserve
- Forest Wilderness Area
- Marine Protected Area
- Mountain Catchment Area
- National Park
- Nature Reserve
- Protected Environment
- Special Nature Reserve
- World Heritage Site

Critical Biodiversity Areas

CBA1	Degraded	ESA2
CBA2	ESA1	Protected
	Other	

KwaZulu-Natal W32H-04





bing™

© 2018 Microsoft Corporation © 2018 DigitalGlobe © CNES (2018) Distribution Airbus DS

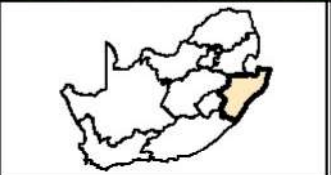
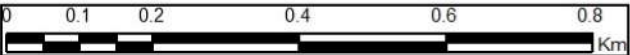
Protected Areas

- Forest Nature Reserve
- Forest Wilderness Area
- Marine Protected Area
- Mountain Catchment Area
- National Park
- Nature Reserve
- Protected Environment
- Special Nature Reserve
- World Heritage Site

Critical Biodiversity Areas

CBA1	Degraded	ESA2
CBA2	ESA1	Protected
	Other	

KwaZulu-Natal W32H-05





bing™

© 2019 Microsoft Corporation © 2019 DigitalGlobe © CNES (2019) Distribution Airbus DS

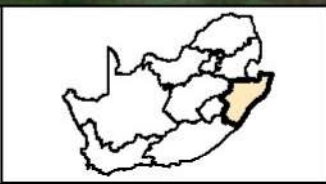
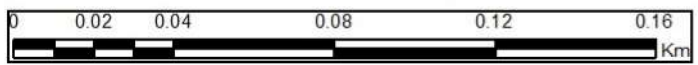
Protected Areas

- Forest Nature Reserve
- Forest Wilderness Area
- Marine Protected Area
- Mountain Catchment Area
- National Park
- Nature Reserve
- Protected Environment
- Special Nature Reserve
- World Heritage Site

Critical Biodiversity Areas

CBA1	Degraded	ESA2
CBA2	ESA1	Protected
		Other

KwaZulu-Natal W32H-06





bing™

© 2019 Microsoft Corporation Earthstar Geographics, SIO

Critical Biodiversity Areas

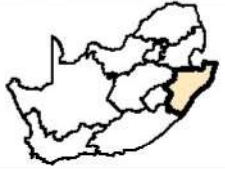
- | | | |
|------|----------|-----------|
| CBA1 | Degraded | ESA2 |
| CBA2 | ESA1 | Protected |
| | | Other |

KwaZulu-Natal W32H-07



Protected Areas

- Forest Nature Reserve
- Forest Wilderness Area
- Marine Protected Area
- Mountain Catchment Area
- National Park
- Nature Reserve
- Protected Environment
- Special Nature Reserve
- World Heritage Site





Protected Areas

- Forest Nature Reserve
- Forest Wilderness Area
- Marine Protected Area
- Mountain Catchment Area
- National Park
- Nature Reserve
- Protected Environment
- Special Nature Reserve
- World Heritage Site

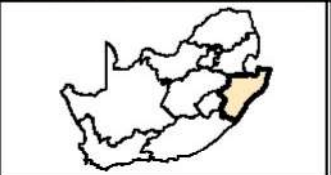
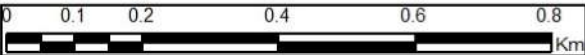
bing™

© 2019 Microsoft Corporation © 2019 DigitalGlobe © CNES (2019) Distribution Airbus DS

Critical Biodiversity Areas

CBA1	Degraded	ESA2
CBA2	ESA1	Protected
		Other

KwaZulu-Natal W32H-08





bing

© 2019 Microsoft Corporation © 2019 DigitalGlobe © CNES (2019) Distribution Airbus DS

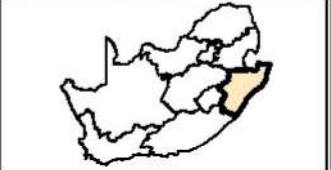
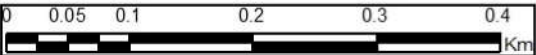
Protected Areas

- Forest Nature Reserve
- Forest Wilderness Area
- Marine Protected Area
- Mountain Catchment Area
- National Park
- Nature Reserve
- Protected Environment
- Special Nature Reserve
- World Heritage Site

Critical Biodiversity Areas

CBA1	Degraded	ESA2
CBA2	ESA1	Protected
		Other

KwaZulu-Natal W32H-09





bing™

© 2019 Microsoft Corporation © 2019 DigitalGlobe © CNES (2019) Distribution Airbus DS

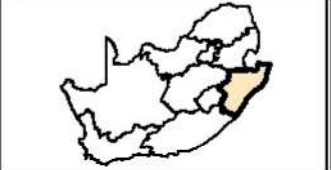
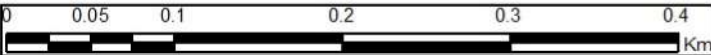
Protected Areas

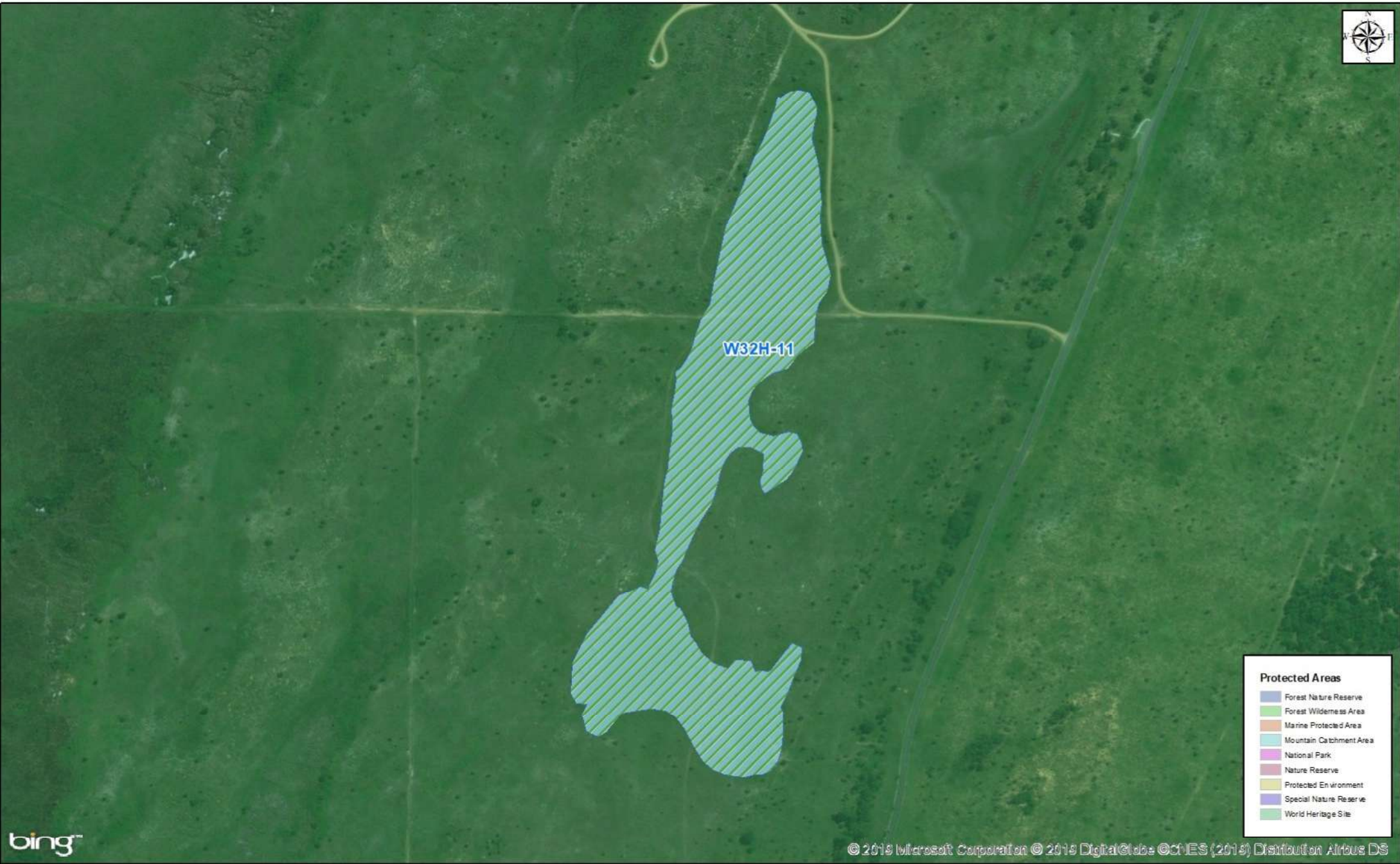
- Forest Nature Reserve
- Forest Wilderness Area
- Marine Protected Area
- Mountain Catchment Area
- National Park
- Nature Reserve
- Protected Environment
- Special Nature Reserve
- World Heritage Site

Critical Biodiversity Areas

CBA1	Degraded	ESA2
CBA2	ESA1	Protected
		Other

KwaZulu-Natal W32H-10





bing™

© 2019 Microsoft Corporation © 2019 DigitalGlobe © CNES (2019) Distribution Airbus DS

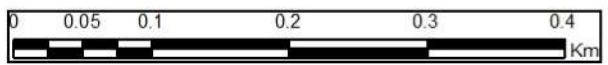
Protected Areas

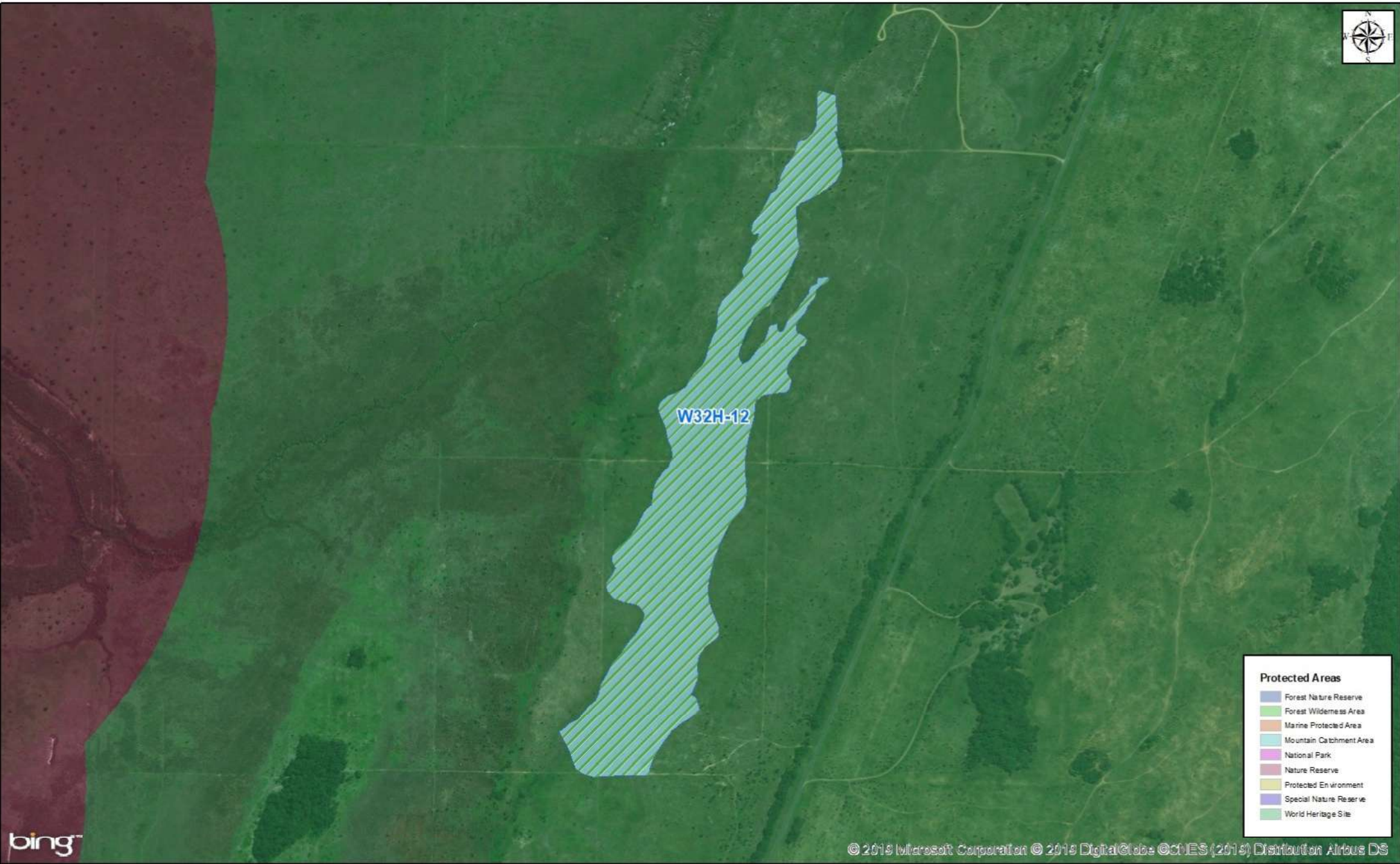
- Forest Nature Reserve
- Forest Wilderness Area
- Marine Protected Area
- Mountain Catchment Area
- National Park
- Nature Reserve
- Protected Environment
- Special Nature Reserve
- World Heritage Site

Critical Biodiversity Areas

CBA1	Degraded	ESA2
CBA2	ESA1	Protected
		Other

KwaZulu-Natal W32H-11





bing™

© 2019 Microsoft Corporation © 2019 DigitalGlobe © CNES (2019) Distribution Airbus DS

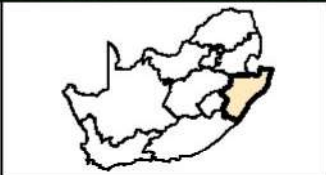
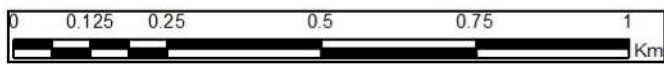
Protected Areas

- Forest Nature Reserve
- Forest Wilderness Area
- Marine Protected Area
- Mountain Catchment Area
- National Park
- Nature Reserve
- Protected Environment
- Special Nature Reserve
- World Heritage Site

Critical Biodiversity Areas

CBA1	Degraded	ESA2
CBA2	ESA1	Protected
		Other

KwaZulu-Natal W32H-12





bing™

© 2019 Microsoft Corporation © 2019 DigitalGlobe © CNES (2019) Distribution Airbus DS

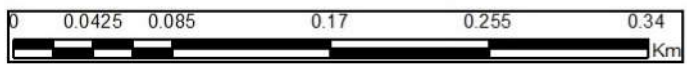
Protected Areas

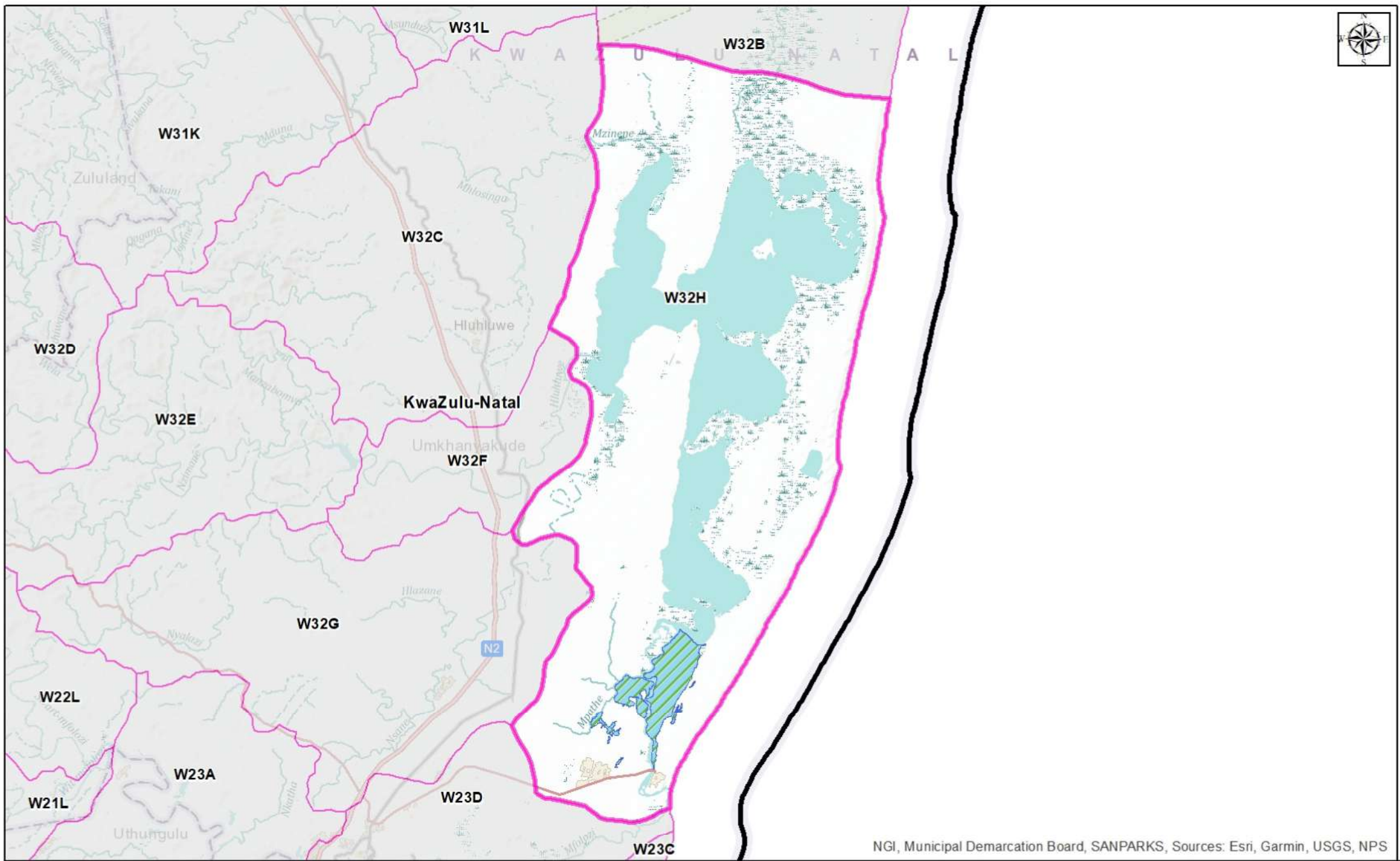
- Forest Nature Reserve
- Forest Wilderness Area
- Marine Protected Area
- Mountain Catchment Area
- National Park
- Nature Reserve
- Protected Environment
- Special Nature Reserve
- World Heritage Site

Critical Biodiversity Areas

CBA1	Degraded	ESA2
CBA2	ESA1	Protected
		Other

KwaZulu-Natal W32H-13



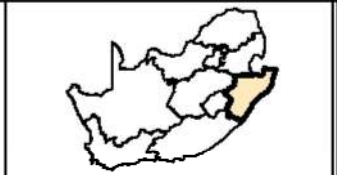
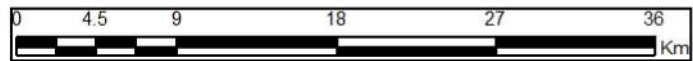


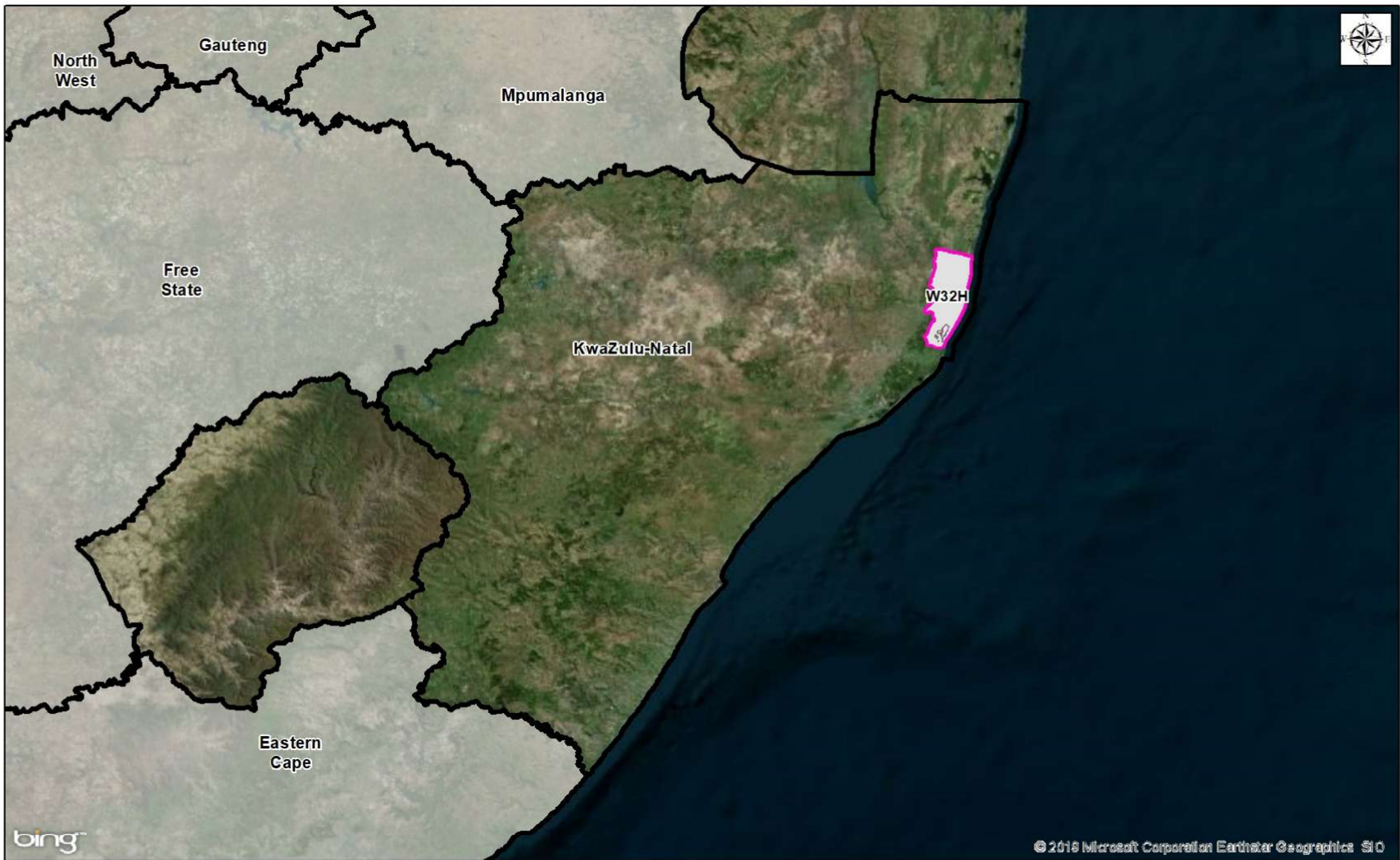
NGI, Municipal Demarcation Board, SANPARKS, Sources: Esri, Garmin, USGS, NPS

Legend

-  Wetland Boundaries
-  Relevant Quaternary

KwaZulu-Natal - W32H







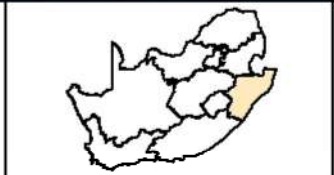
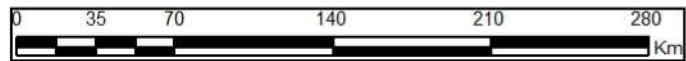
bing™

© 2019 Microsoft Corporation Earthstar Geographics. SIO

Legend

-  Provincial Boundaries
-  Quaternary Boundaries

KwaZulu-Natal



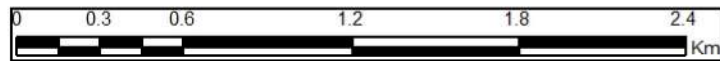


Esri, HERE, Garmin, © OpenStreetMap contributors, and the GIS user community, Source: Esri, DigitalGlobe, GeoEye, Earthstar Geographics, CNES/Airbus DS, USDA, USGS, AeroGRID, IGN, and the GIS User Community

Legend

-  Wetland Boundary
-  Relevant Quaternary

KwaZulu-Natal W32H-03





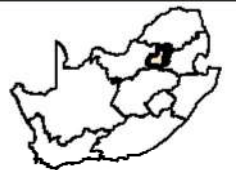
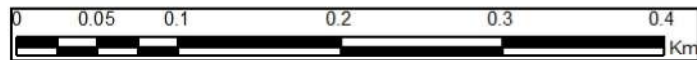
W32H-04

Esri, HERE, Garmin, © OpenStreetMap contributors, and the GIS user community, Source: Esri, DigitalGlobe, GeoEye, Earthstar Geographics, CNES/Airbus DS, USDA, USGS, AeroGRID, IGN, and the GIS User Community

Legend

-  Wetland Boundary
-  Relevant Quaternary

KwaZulu-Natal W32H-04



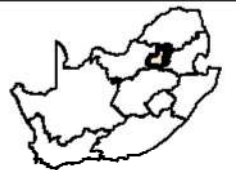
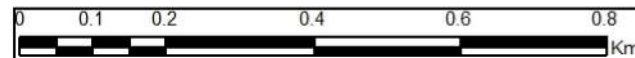


Esri, HERE, Garmin, © OpenStreetMap contributors, and the GIS user community, Source: Esri, DigitalGlobe, GeoEye, Earthstar Geographics, CNES/Airbus DS, USDA, USGS, AeroGRID, IGN, and the GIS User Community

Legend

-  Wetland Boundary
-  Relevant Quaternary

KwaZulu-Natal W32H-05





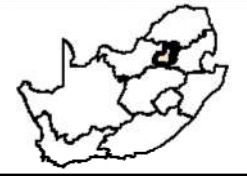
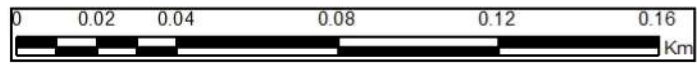
W32H-06

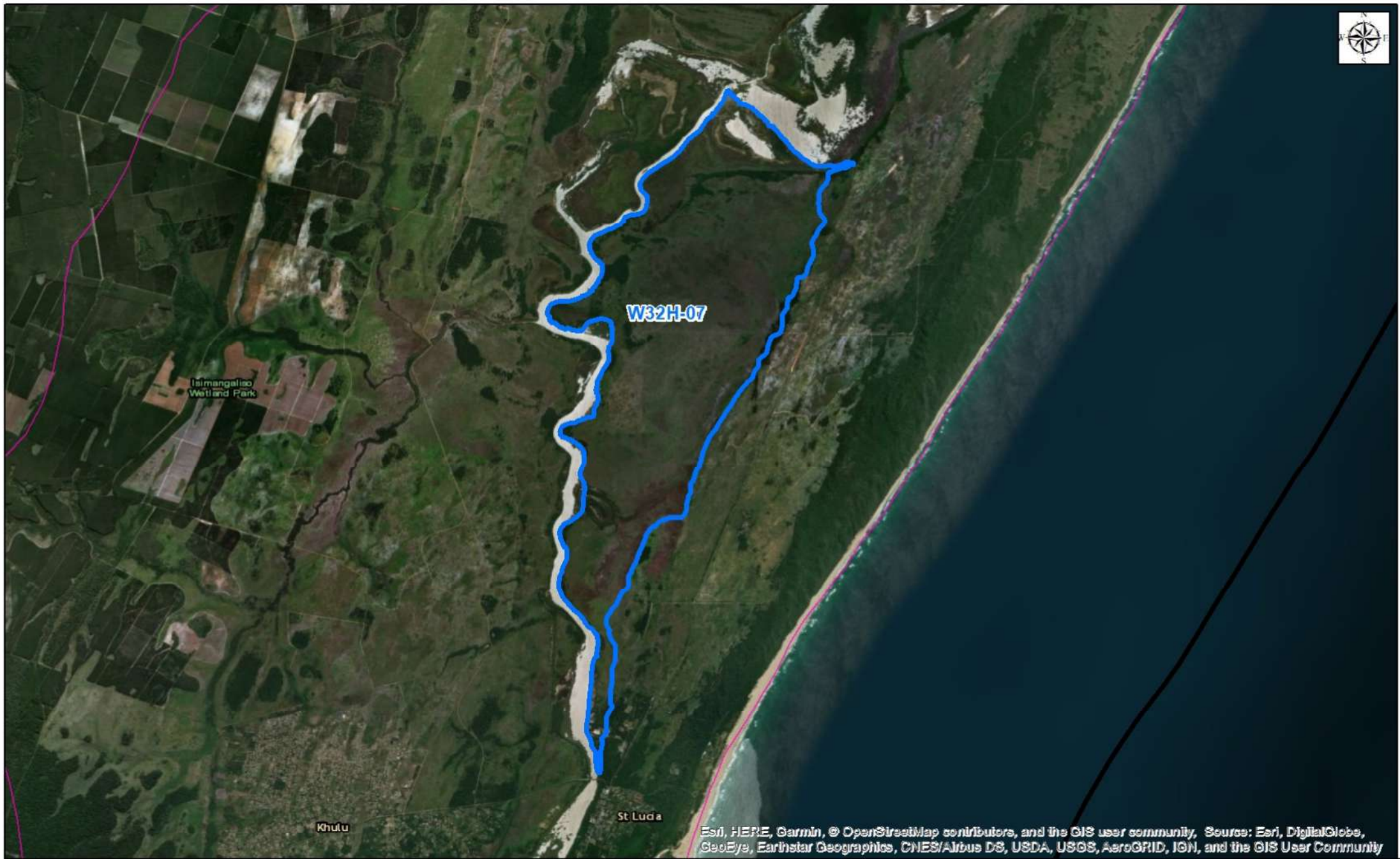
Esri, HERE, Garmin, © OpenStreetMap contributors, and the GIS user community, Source: Esri, DigitalGlobe, GeoEye, Earthstar Geographics, CNES/Airbus DS, USDA, USGS, AeroGRID, IGN, and the GIS User Community

Legend

-  Wetland Boundary
-  Relevant Quaternary

KwaZulu-Natal W32H-06





Esri, HERE, Garmin, © OpenStreetMap contributors, and the GIS user community, Source: Esri, DigitalGlobe, GeoEye, Earthstar Geographics, CNES/Airbus DS, USDA, USGS, AeroGRID, IGN, and the GIS User Community

Legend

-  Wetland Boundary
-  Relevant Quaternary

KwaZulu-Natal W32H-07



0 0.75 1.5 3 4.5 6 Km



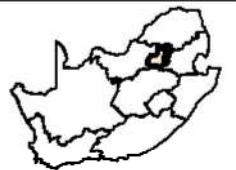
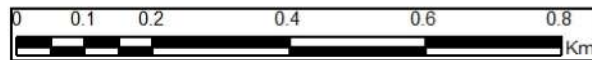


Esri, HERE, Garmin, © OpenStreetMap contributors, and the GIS user community, Source: Esri, DigitalGlobe, GeoEye, Earthstar Geographics, CNES/Airbus DS, USDA, USGS, AeroGRID, IGN, and the GIS User Community

Legend

-  Wetland Boundary
-  Relevant Quaternary

KwaZulu-Natal W32H-08





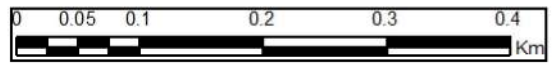
W32H-09

Esri, HERE, Garmin, © OpenStreetMap contributors, and the GIS user community, Source: Esri, DigitalGlobe, GeoEye, Earthstar Geographics, CNES/Airbus DS, USDA, USGS, AeroGRID, IGN, and the GIS User Community

Legend

-  Wetland Boundary
-  Relevant Quaternary

KwaZulu-Natal W32H-09



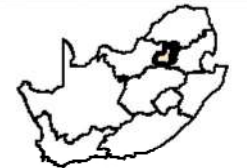
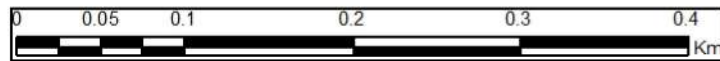


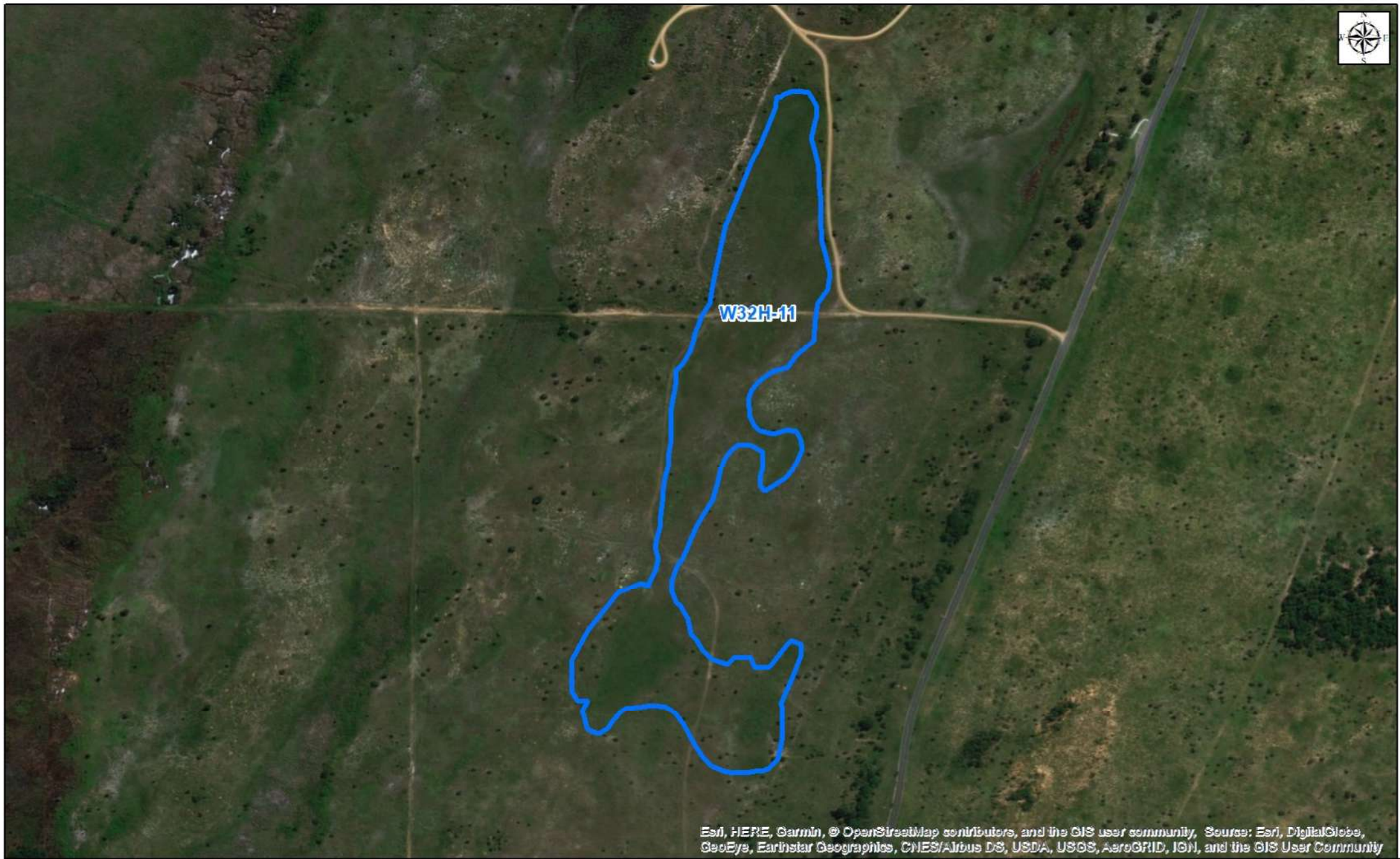
Esri, HERE, Garmin, © OpenStreetMap contributors, and the GIS user community, Source: Esri, DigitalGlobe, GeoEye, Earthstar Geographics, CNES/Airbus DS, USDA, USGS, AeroGRID, IGN, and the GIS User Community

Legend

-  Wetland Boundary
-  Relevant Quaternary

KwaZulu-Natal W32H-10



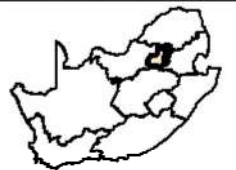
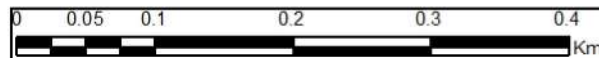


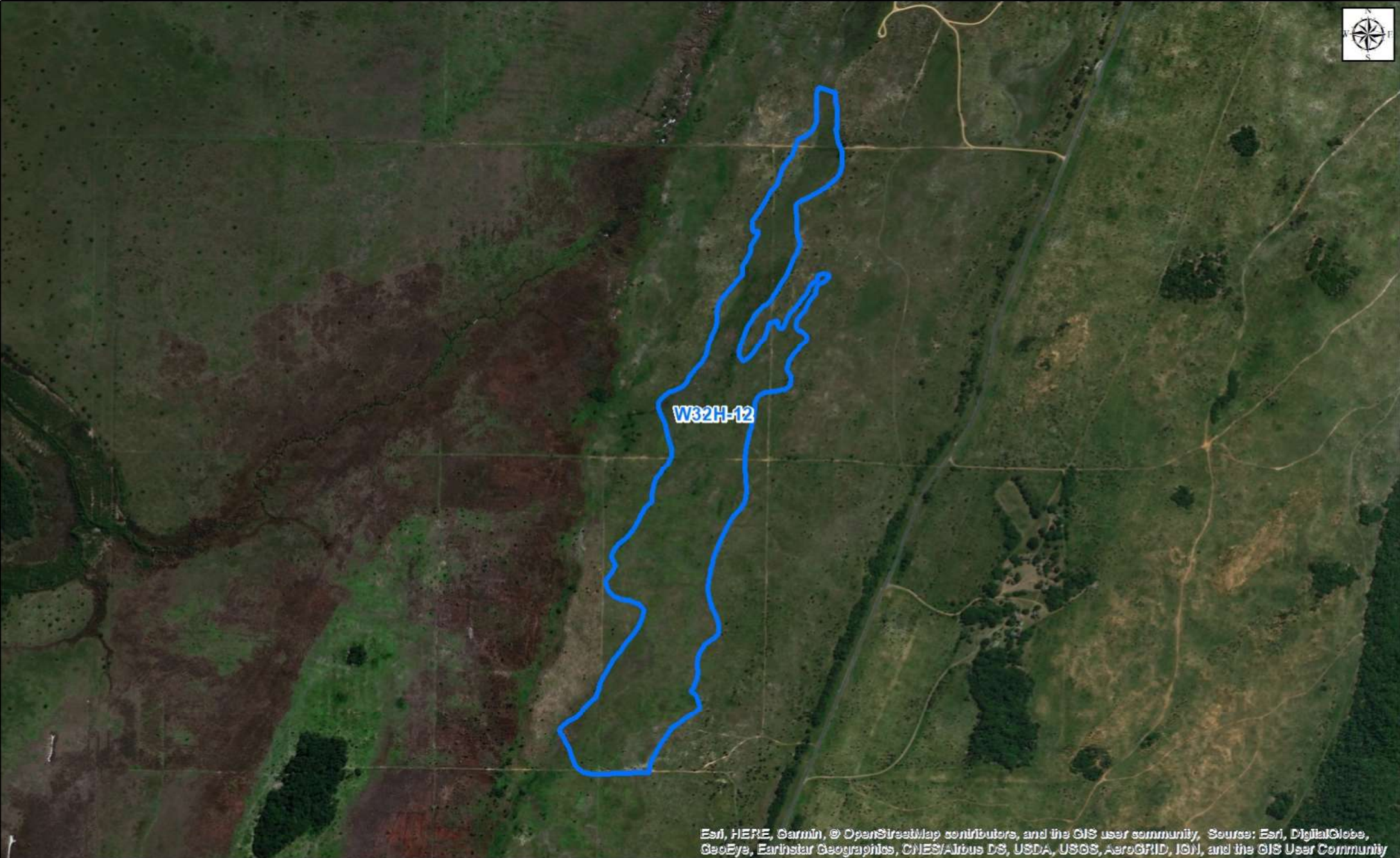
Esri, HERE, Garmin, © OpenStreetMap contributors, and the GIS user community, Source: Esri, DigitalGlobe, GeoEye, Earthstar Geographics, CNES/Airbus DS, USDA, USGS, AeroGRID, IGN, and the GIS User Community

Legend

-  Wetland Boundary
-  Relevant Quaternary

KwaZulu-Natal W32H-11



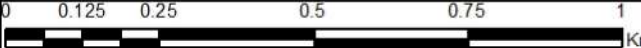


Esri, HERE, Garmin, © OpenStreetMap contributors, and the GIS user community, Source: Esri, DigitalGlobe, GeoEye, Earthstar Geographics, CNES/Airbus DS, USDA, USGS, AeroGRID, IGN, and the GIS User Community

Legend

-  Wetland Boundary
-  Relevant Quaternary

KwaZulu-Natal W32H-12



0 0.125 0.25 0.5 0.75 1 Km





Esri, HERE, Garmin, © OpenStreetMap contributors, and the GIS user community, Source: Esri, DigitalGlobe, GeoEye, Earthstar Geographics, CNES/Airbus DS, USDA, USGS, AeroGRID, IGN, and the GIS User Community

Legend

-  Wetland Boundary
-  Relevant Quaternary

KwaZulu-Natal W32H-13

