

PROJECT TITLE: BASIC ASSESSMENT REPORT FOR TECHNICAL SPECIFICATION UPGRADES TO THE EXISTING NOBLESFONTEIN WIND ENERGY FACILITY, UBUNTU MUNICIPALITY, NORTHERN CAPE.

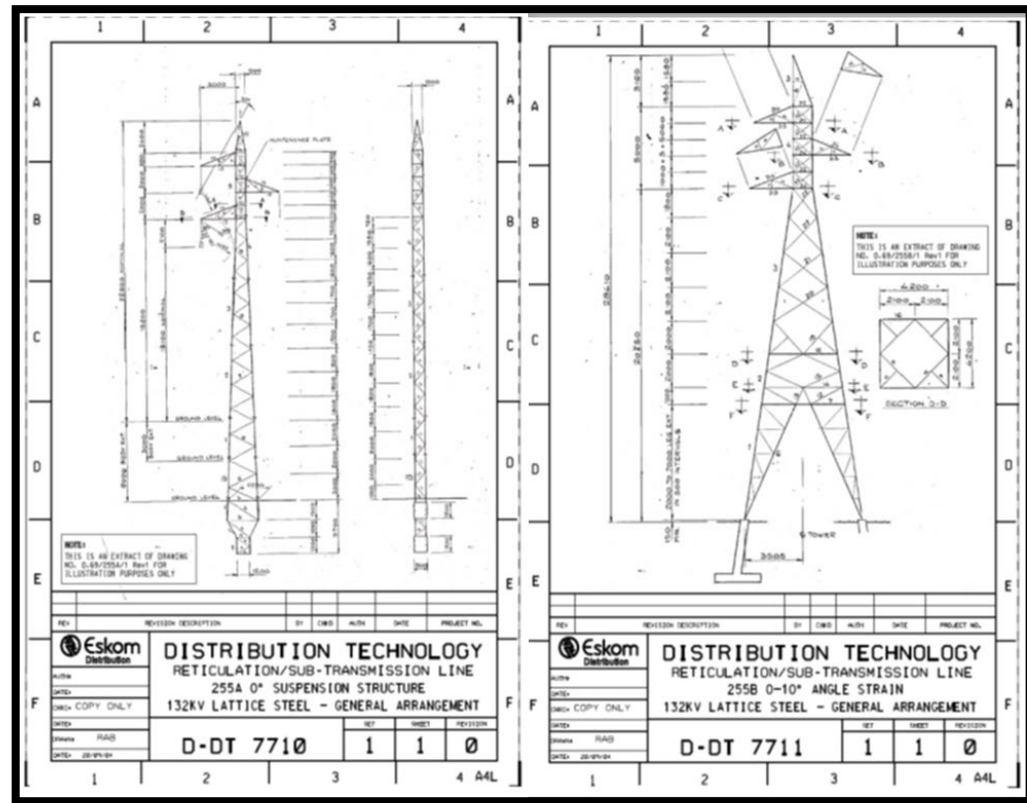


Photo 1: This figure illustrates depicts the typical lattice structure considered for the overhead powerline (Photo courtesy of Eskom, 2017)



Photo 3: This photo shows a typical OHPL comprising lattice structures.

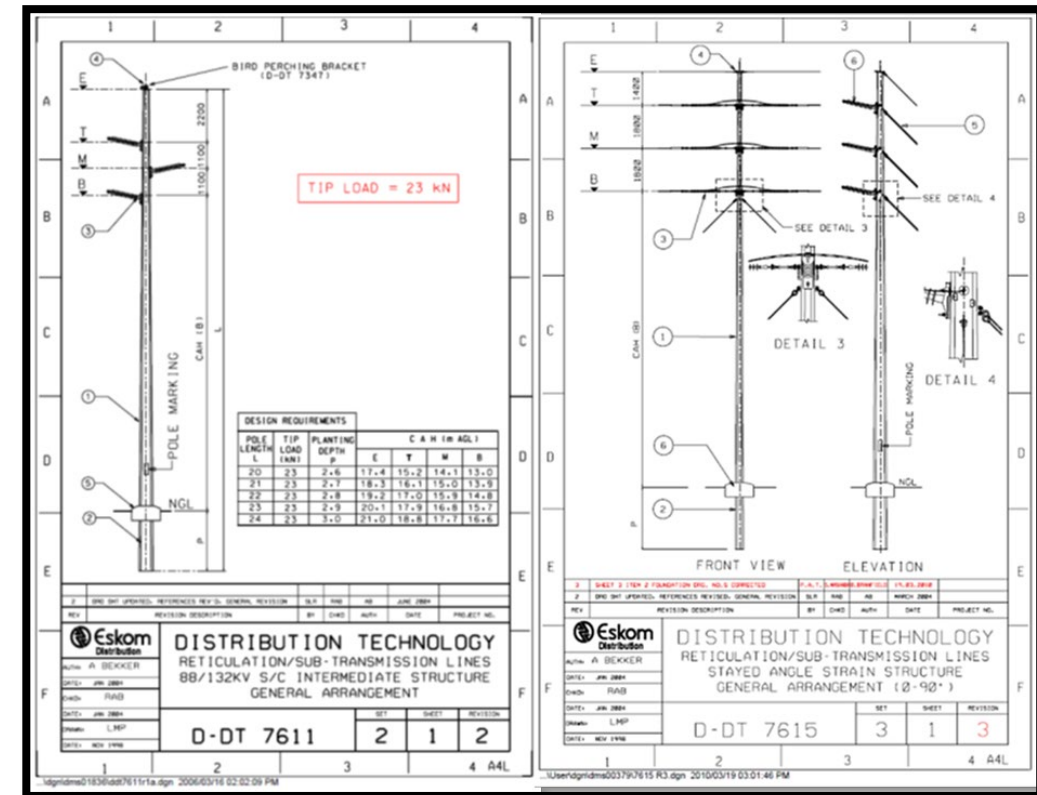


Photo 2: This figure illustrates depicts the typical monopoles considered for the overhead powerline (Photo courtesy of Eskom, 2017)



Photo 4: This photo shows a typical 132kV monopole powerline route.