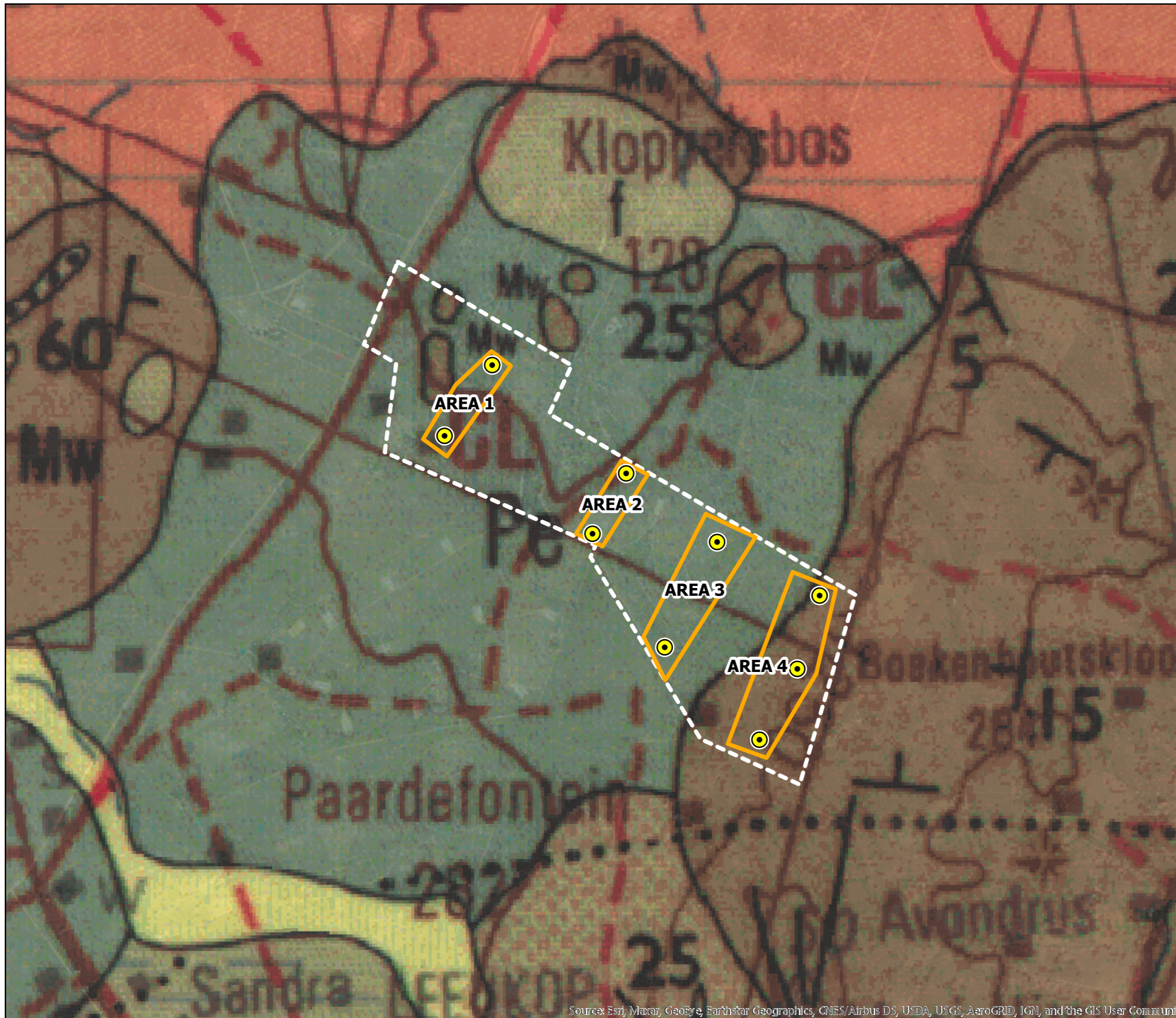


GEOLOGICAL PLAN: EKUPHUMULENI

PLANNED BOREHOLES



FORMASIE / FORMATION		LITOLOGIE / LITHOLOGY	
KWATERNÊR / QUATERNARY	Oppervakafsetting; alluvium (~) Surface deposit; alluvium (~)		Q
JURA / JURASSIC	Letaba Vulkaniese gesteentes, sandsteen Volcanic rocks, sandstone		J
TRIAS / TRIASSIC	Clarens Fynkorrelrige sandsteen Fine-grained sandstone		T
PERM / PERMIAN	Irrigasie Veelkleurige siltsteen, sandsteen, merraal, moddersteen, skalie Multi-coloured siltstone, sandstone, marl, mudstone, shale		P - T
	Ecca Skalie, skalie-agtige sandsteen, grintsteen, sandsteen konglomeraat, plek-plek steenkool naby basis en top Shale, shaly sandstone, grit, sandstone, conglomerate, coal in places near base and top		Pe
	Dwika Tilliet, skalie Tillite, shale		Pd
MOOGLIUM / MOGOLIAN	Hibriede en gemetasomiseerde en gefeniseerde gesteentes Hybrid and metasomised and fenitised rocks		Ma
	Wilgerivier Sandsteen, plek-plek kwartsties; konglomeraat Sandstone, quartzitic in places; conglomerate		Mw

Source: Esri, Maxar, GeoEye, Earthstar Geographics, CNES/Airbus DS, USDA, USGS, AeroGRID, IGN, and the GIS User Community

