

# Site Activities Map

- Legend**
- Artificial surfaces
  - DIGGING
  - Inland water
  - NON-PERENNIAL PAN
  - River
  - NON-PERENNIAL EXTENT
  - Roads
  - N2
  - TRACK FOOTPATH
  - Farm portions
  - Western Cape Province
  - Eden District Municipality
  - Mossel Bay Local Municipality
  - Ward no. 7
  - Administrative regions - Mossel Bay
  - Farm portions
  - Magisterial districts - Mossel Bay
  - New Permit area
  - Stockpile area 140m x 60m
  - Weighbridge and workshop area
  - Telecom Tower
  - Processing Plant 100m x 100m
  - Existing quarry
  - Access Route
  - Site Access Route - 750 m
  - Topsoil Stockpile

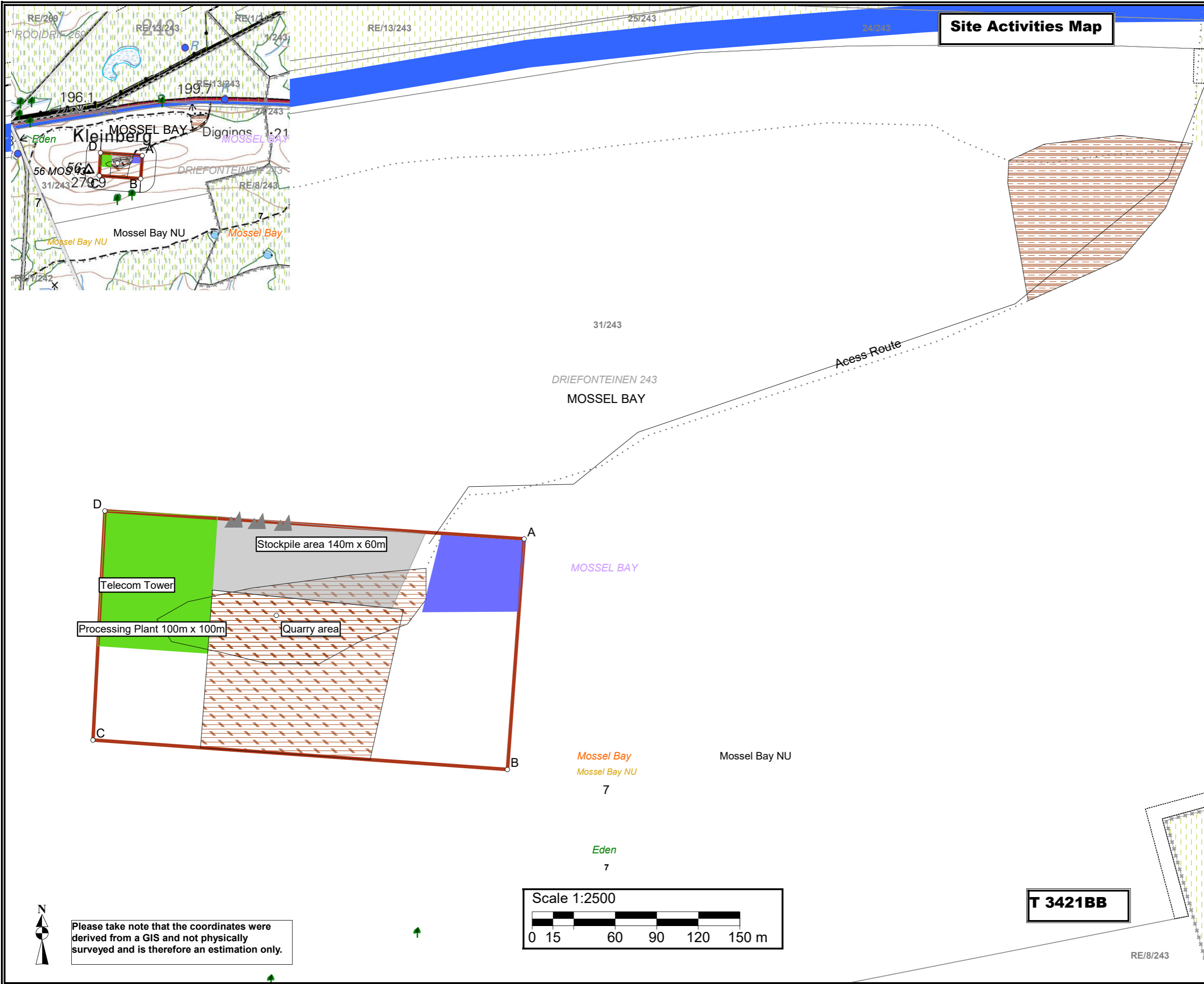
**Proposed mining area coordinates:**  
 A 34.180768°S; 21.894673°E  
 B 34.182262°S; 21.894542°E  
 C 34.182071°S; 21.891307°E  
 D 34.180587°S; 21.891401°E  
 A 34.180768°S; 21.894673°E

A 34°10'50.765"S; 21°53'40.823"E  
 B 34°10'56.143"S; 21°53'40.351"E  
 C 34°10'55.456"S; 21°53'28.705"E  
 D 34°10'50.113"S; 21°53'29.044"E  
 A 34°10'50.765"S; 21°53'40.823"E

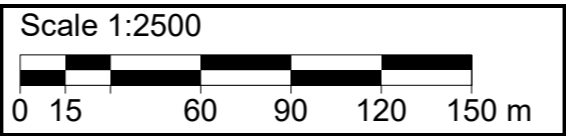
**Mining permit application area:**  
 5.0 ha

**Client:**  
 Haw and Inglis Civil Engineering Pty Ltd

**Consultant:**



Please take note that the coordinates were derived from a GIS and not physically surveyed and is therefore an estimation only.



**T 3421BB**

RE/8/243