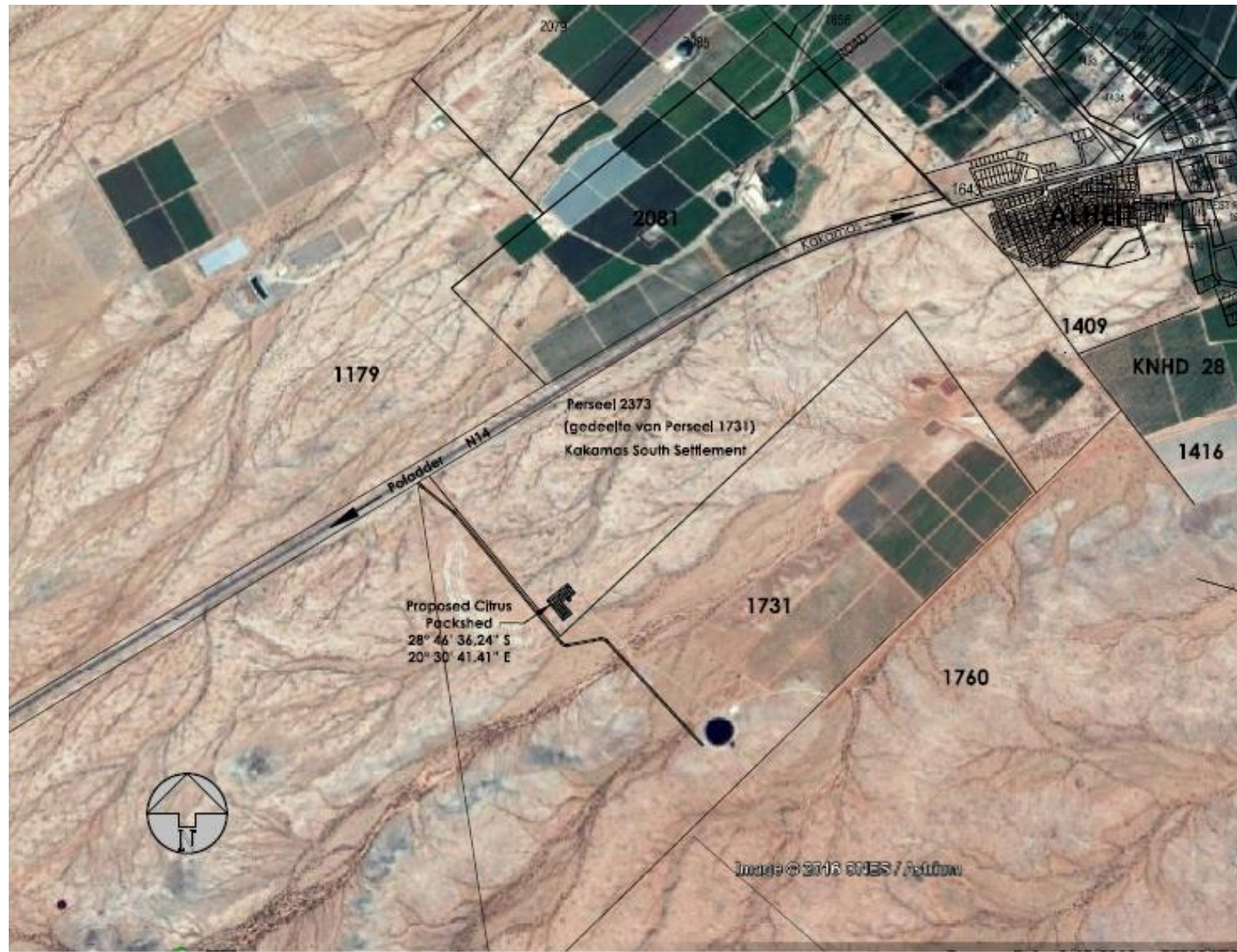


**PROPOSED CONSTRUCTION OF A PACKING SHED (8425M<sup>2</sup>) WITH A DEVELOPMENT FOOTPRINT OF 25000M<sup>2</sup> ON REMAINDER OF PERSEEL 1731, KAKAMAS SOUTH SETTLEMENT, KAI !GARIB LOCAL MUNICIPALITY, NORTHERN CAPE**



**SITE CO-ORDINATES**

28°46'36.24\"S  
20°30'41.41\"E

**THE SITE**



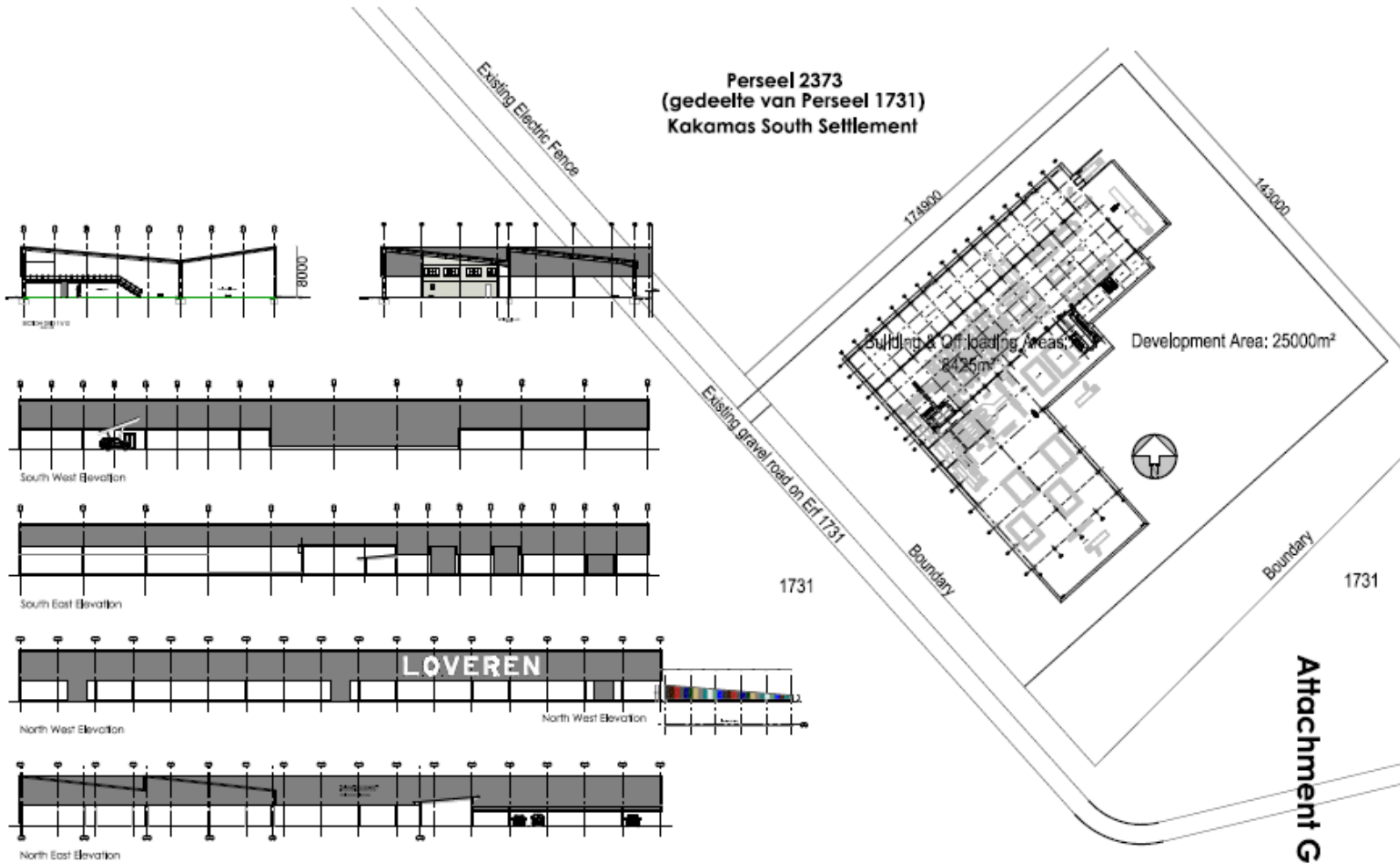
**ENVIRO AFRICA REF:**

0448

May 2016



**PROPOSED CONSTRUCTION OF A PACKING SHED (8425M<sup>2</sup>) WITH A DEVELOPMENT FOOTPRINT OF 25000M<sup>2</sup> ON REMAINDER OF PERSEEL 1731, KAKAMAS SOUTH SETTLEMENT, KAI !GARIB LOCAL MUNICIPALITY, NORTHERN CAPE**



**SITE CO-ORDINATES**

28°46'36.24"S  
20°30'41.41"E



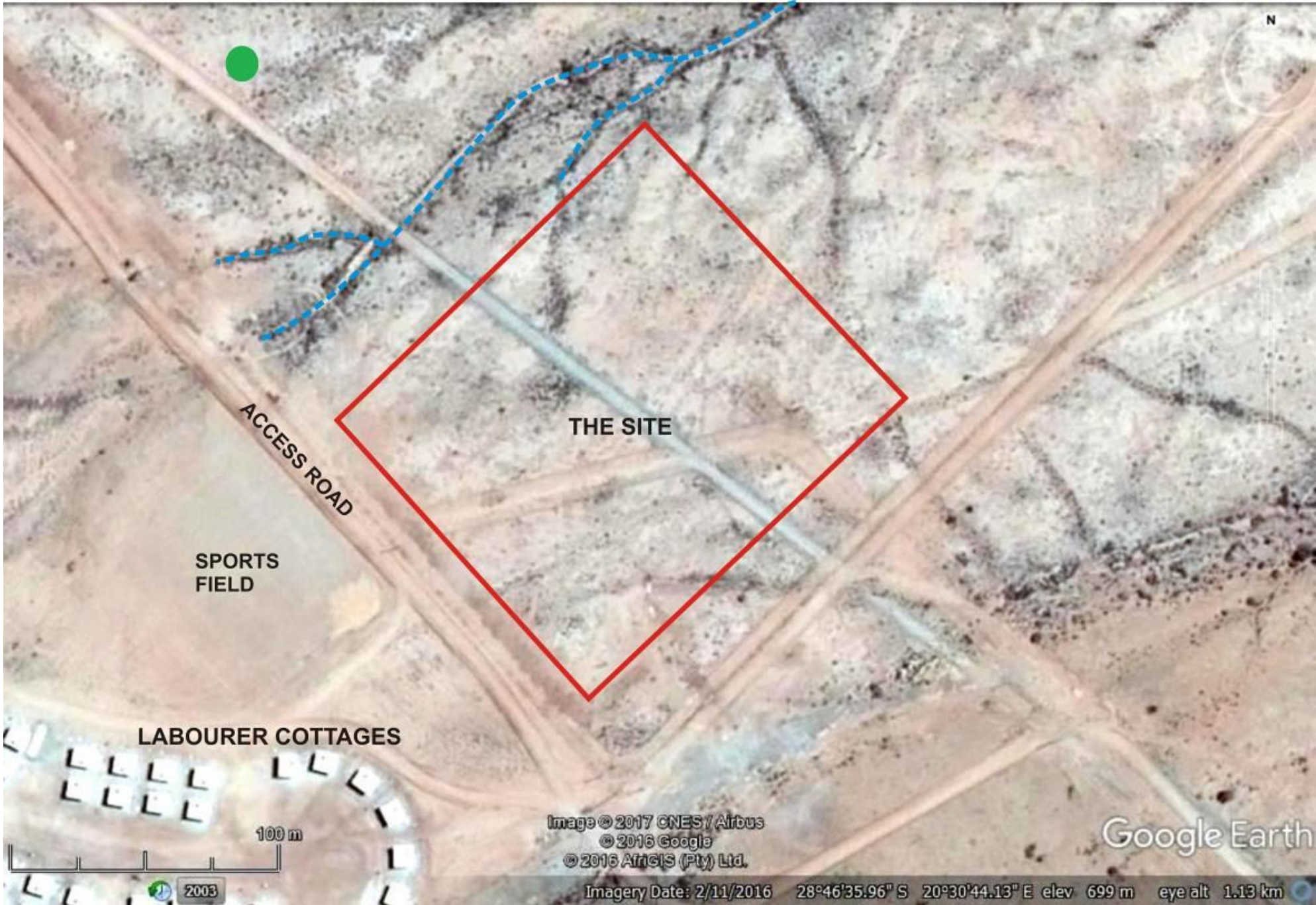
**ENVIRO AFRICA REF:**

0448

May 2017



Attachment G



ACCESS ROAD

SPORTS FIELD

THE SITE

LABOURER COTTAGES

100 m

Image © 2017 CNES / Airbus  
© 2016 Google  
© 2016 ArcGIS (Pty) Ltd.

Google Earth

Imagery Date: 2/11/2016 28°46'35.96" S 20°30'44.13" E elev 699 m eye alt 1.13 km