

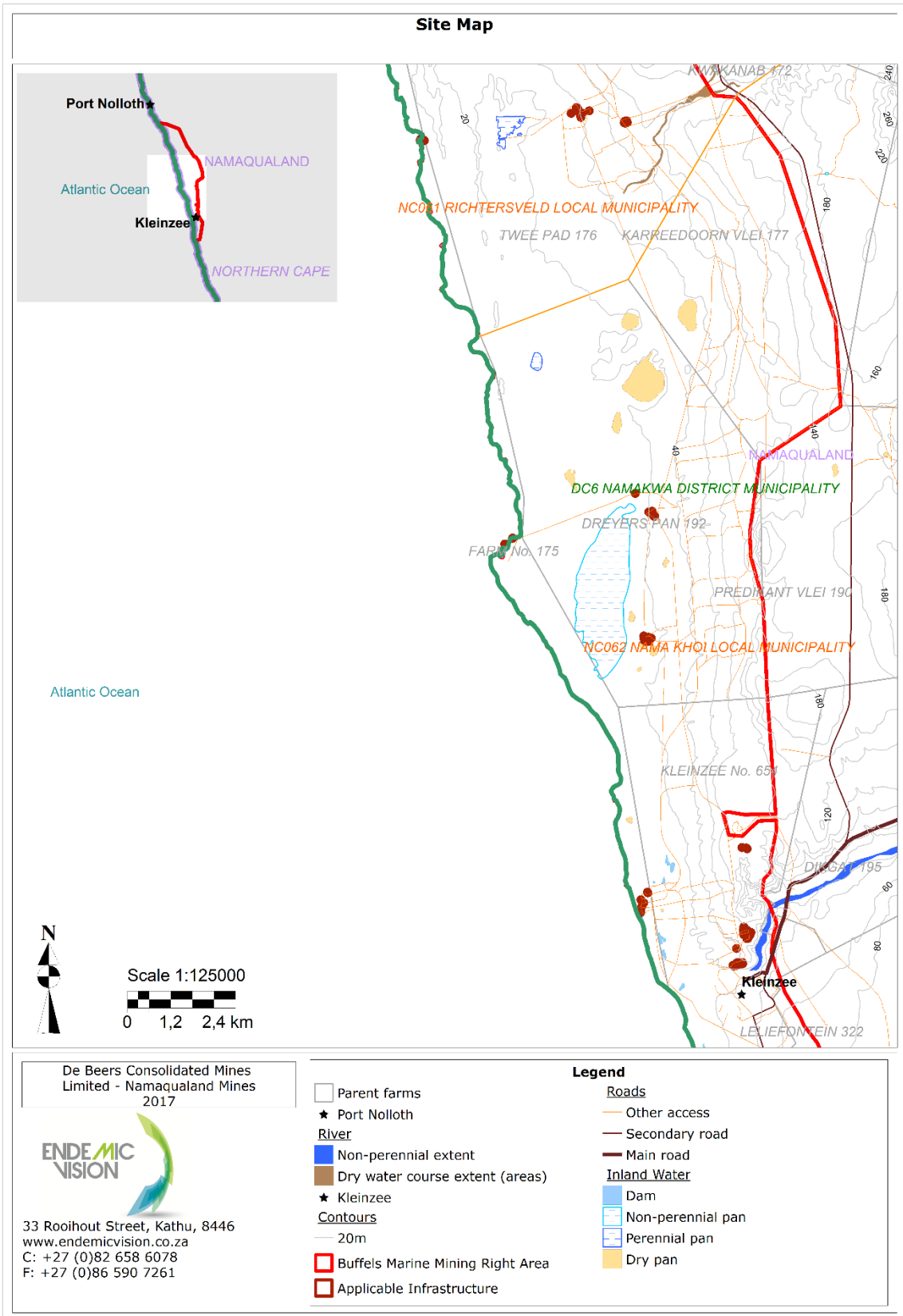
## Appendix C

---

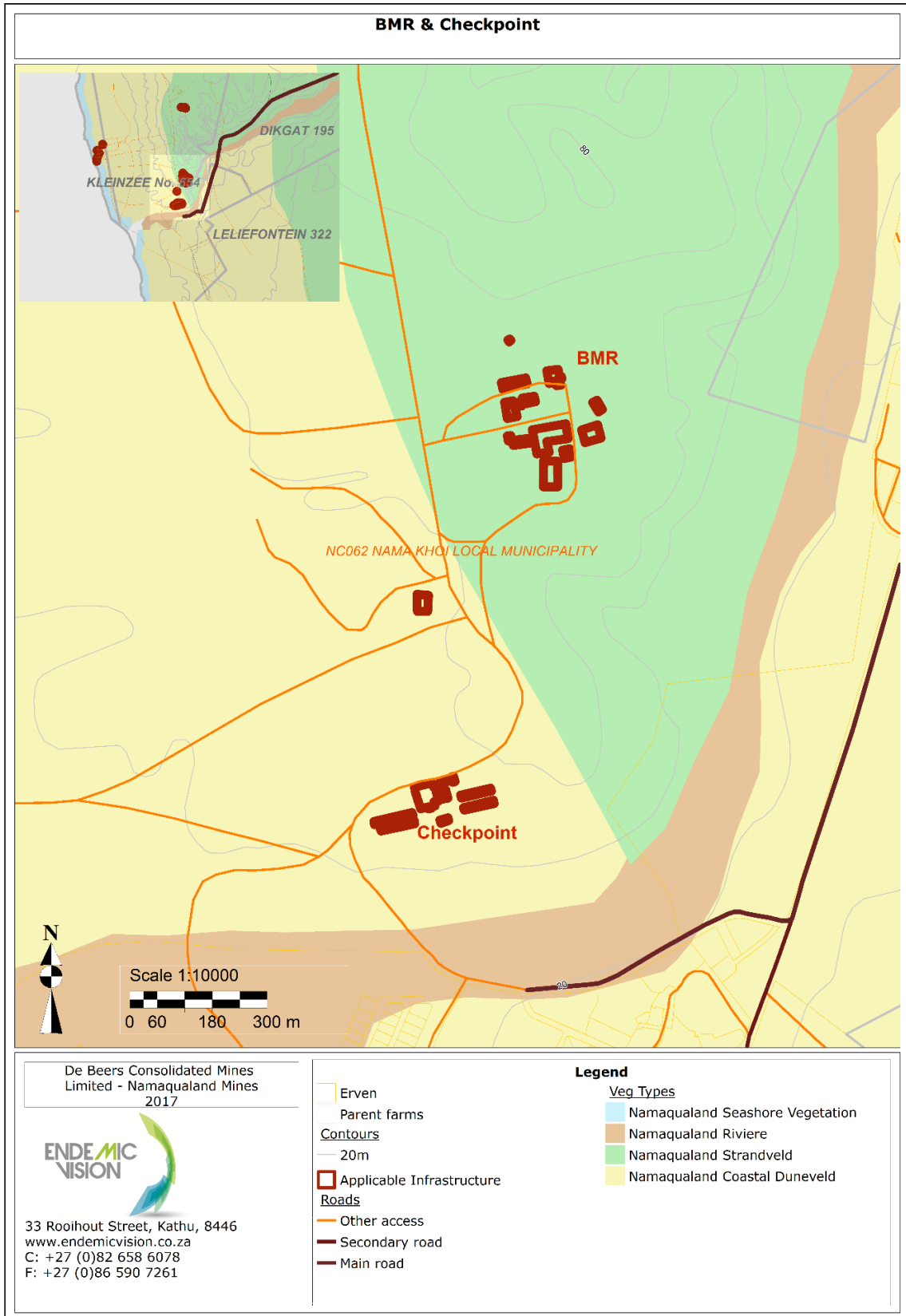
### *SITE PLAN*

For the De Beers Demolition Works Basic Assessment Report and Environmental Management Plan

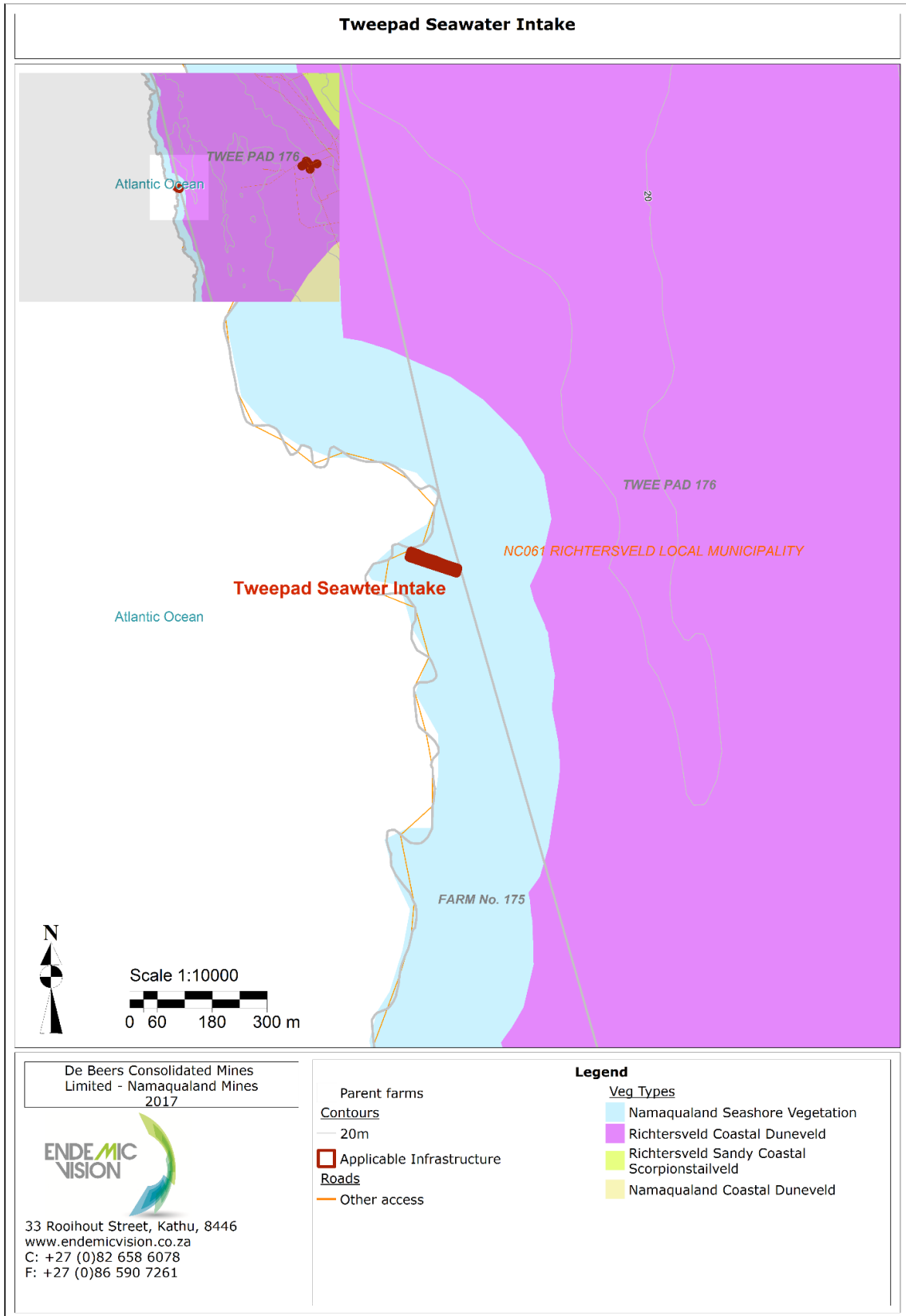
July 2017



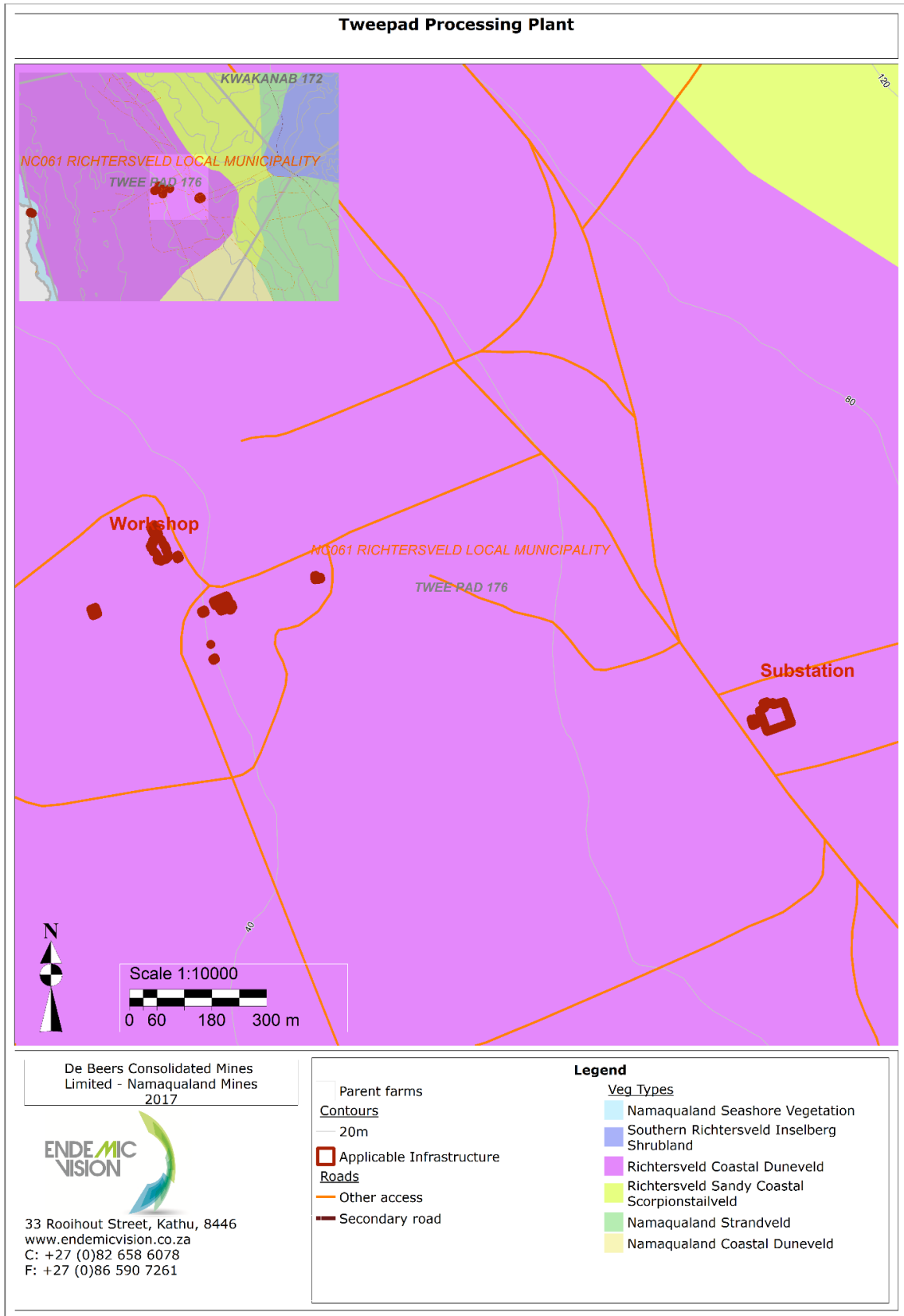
**FIGURE 1: SITE PLAN FOR DE BEERS DEMOLITION**



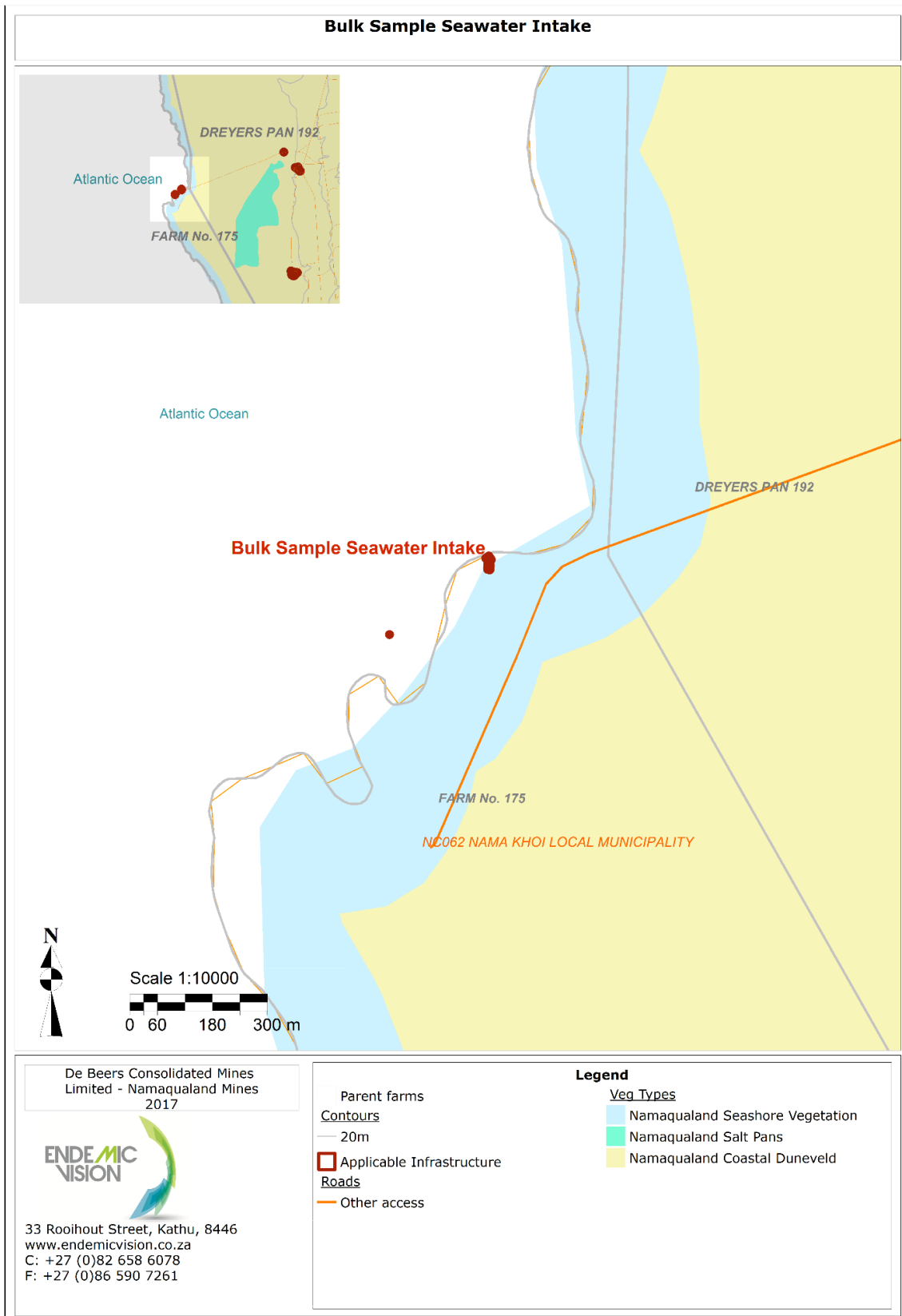
**FIGURE 2: DETAIL MAP OF BMR AND CHECKPOINT INFRASTRUCTURE**



**FIGURE 3: DETAIL MAP OF TWEEPAD SEAWATER INTAKE INFRASTRUCTURE**

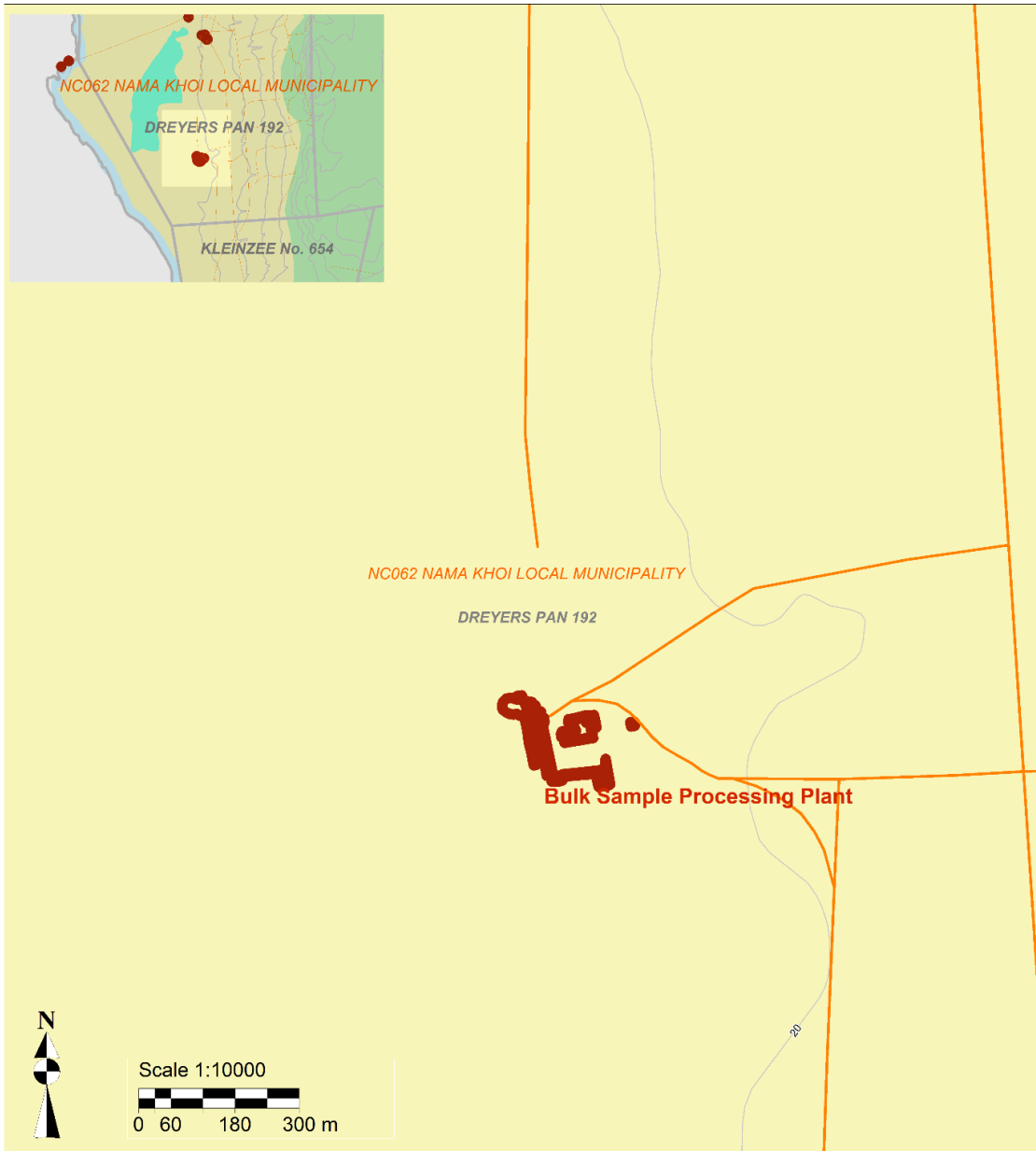


**FIGURE 4: DETAIL MAP OF TWEEPAD PROCESSING PLANT INFRASTRUCTURE**



**FIGURE 5: DETAIL MAP OF BULK SAMPLE SEAWATER INTAKE INFRASTRUCTURE**

### Bulk Sample Processing Plant



De Beers Consolidated Mines Limited - Namaqualand Mines 2017



33 Rooihout Street, Kathu, 8446  
 www.endemicvision.co.za  
 C: +27 (0)82 658 6078  
 F: +27 (0)86 590 7261

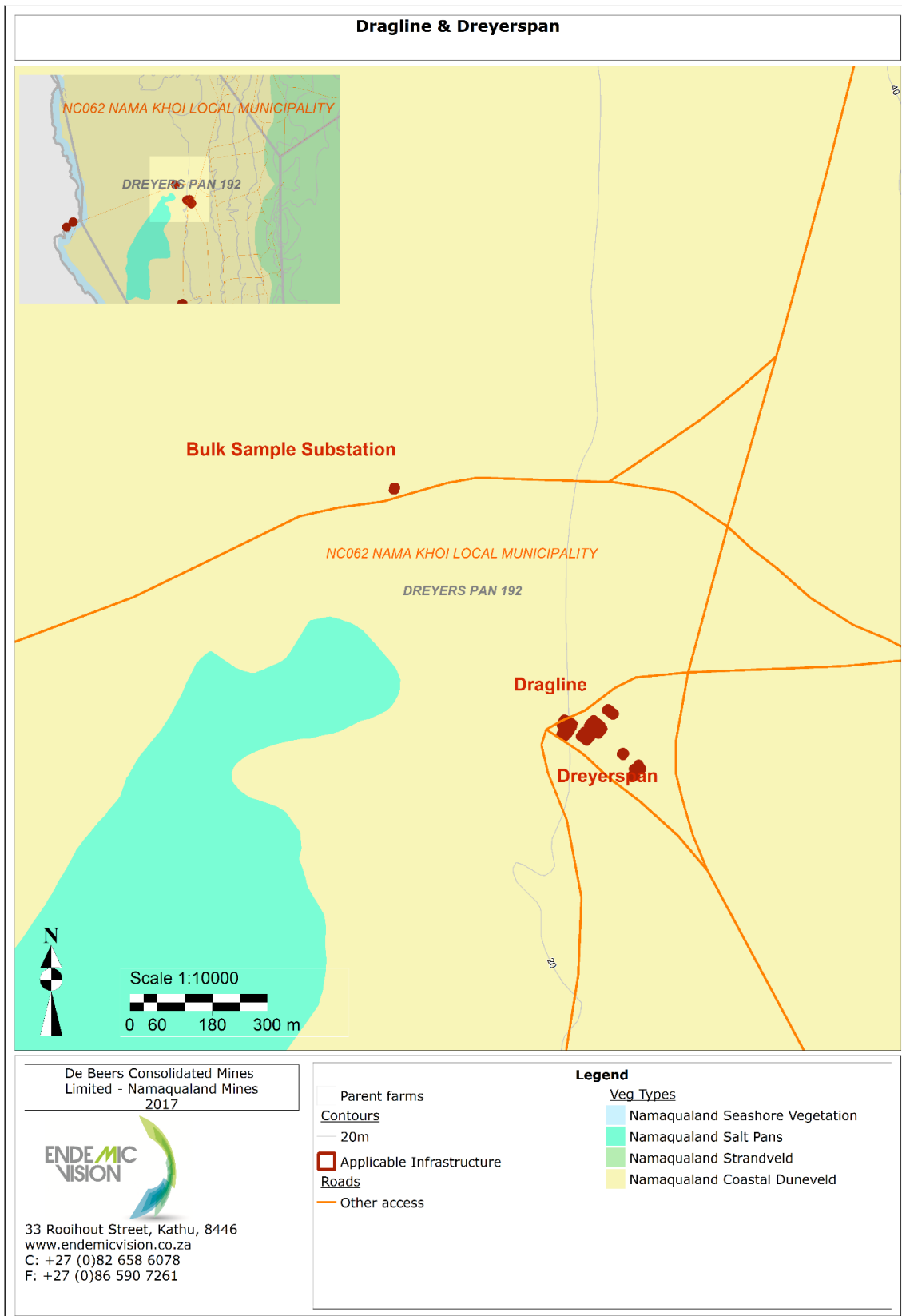
- Parent farms
- Contours
  - 20m
- Applicable Infrastructure
- Roads
  - Other access

#### Legend

##### Veg Types

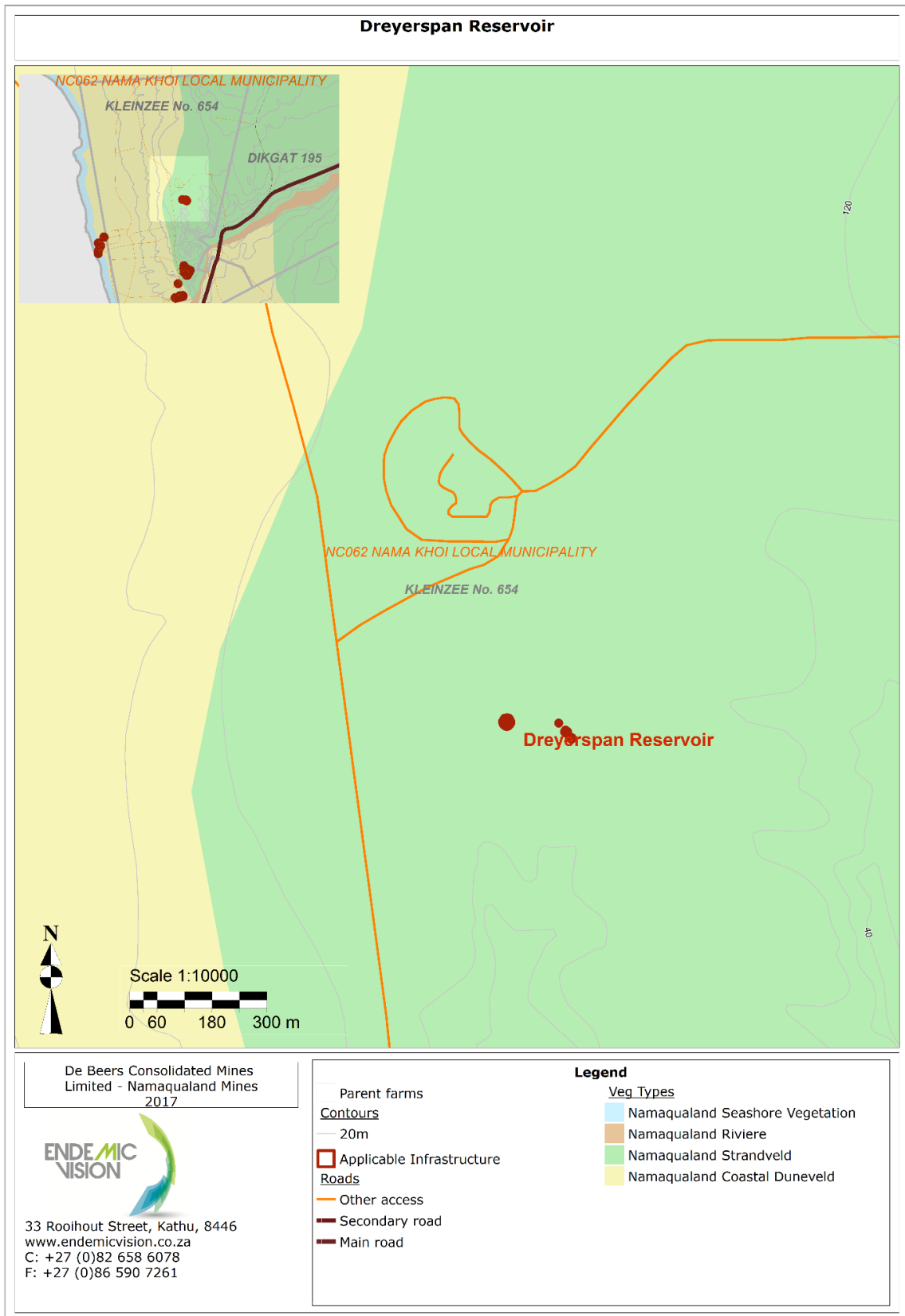
- Namaqualand Seashore Vegetation
- Namaqualand Salt Pans
- Namaqualand Strandveld
- Namaqualand Coastal Duneveld

FIGURE 6: DETAIL MAP OF BULK SAMPLE PROCESSING PLANT INFRASTRUCTURE

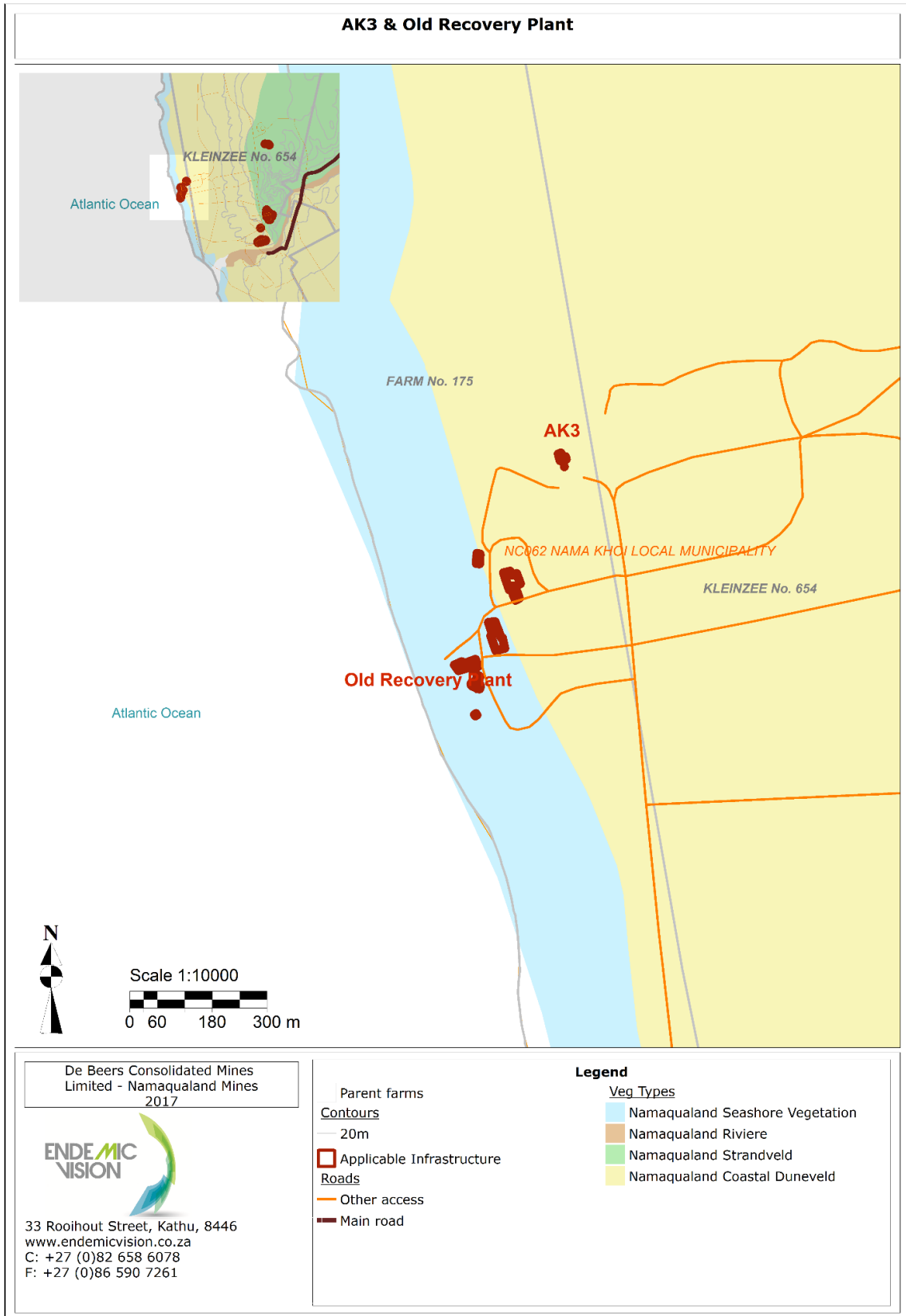


**FIGURE 7: DETAIL MAP OF DRAGLINE AND DREYERSPAN INFRASTRUCTURE**





**FIGURE 8: DETAIL MAP OF DREYERSPAN RESERVOIR INFRASTRUCTURE**



**FIGURE 9: DETAIL MAP OF AK3 AND OLD RECOVERY PLANT INFRASTRUCTURE**