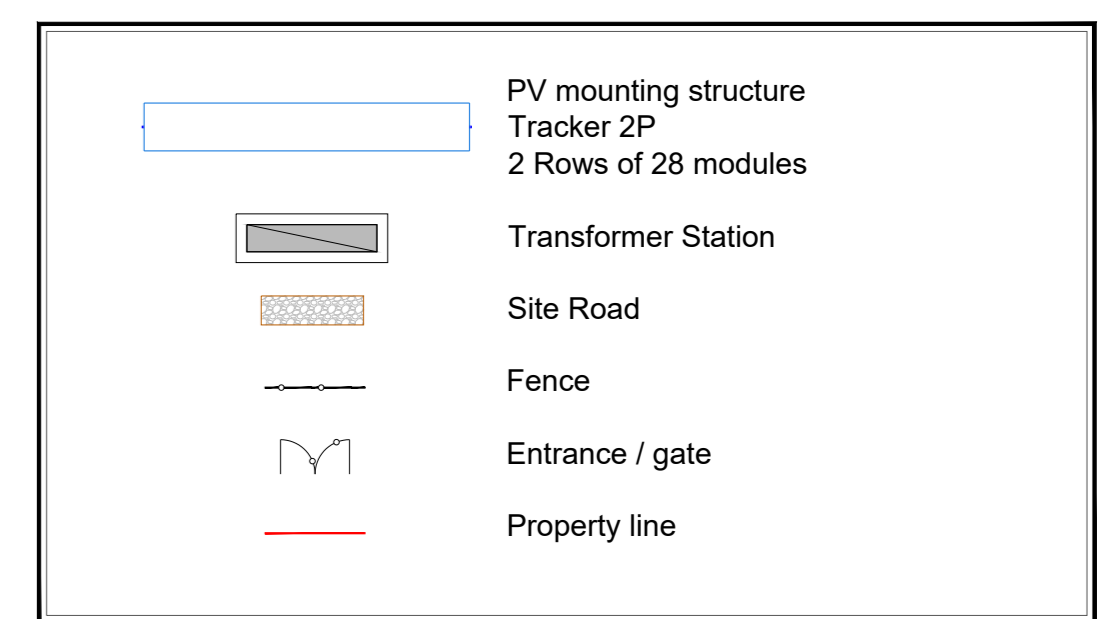
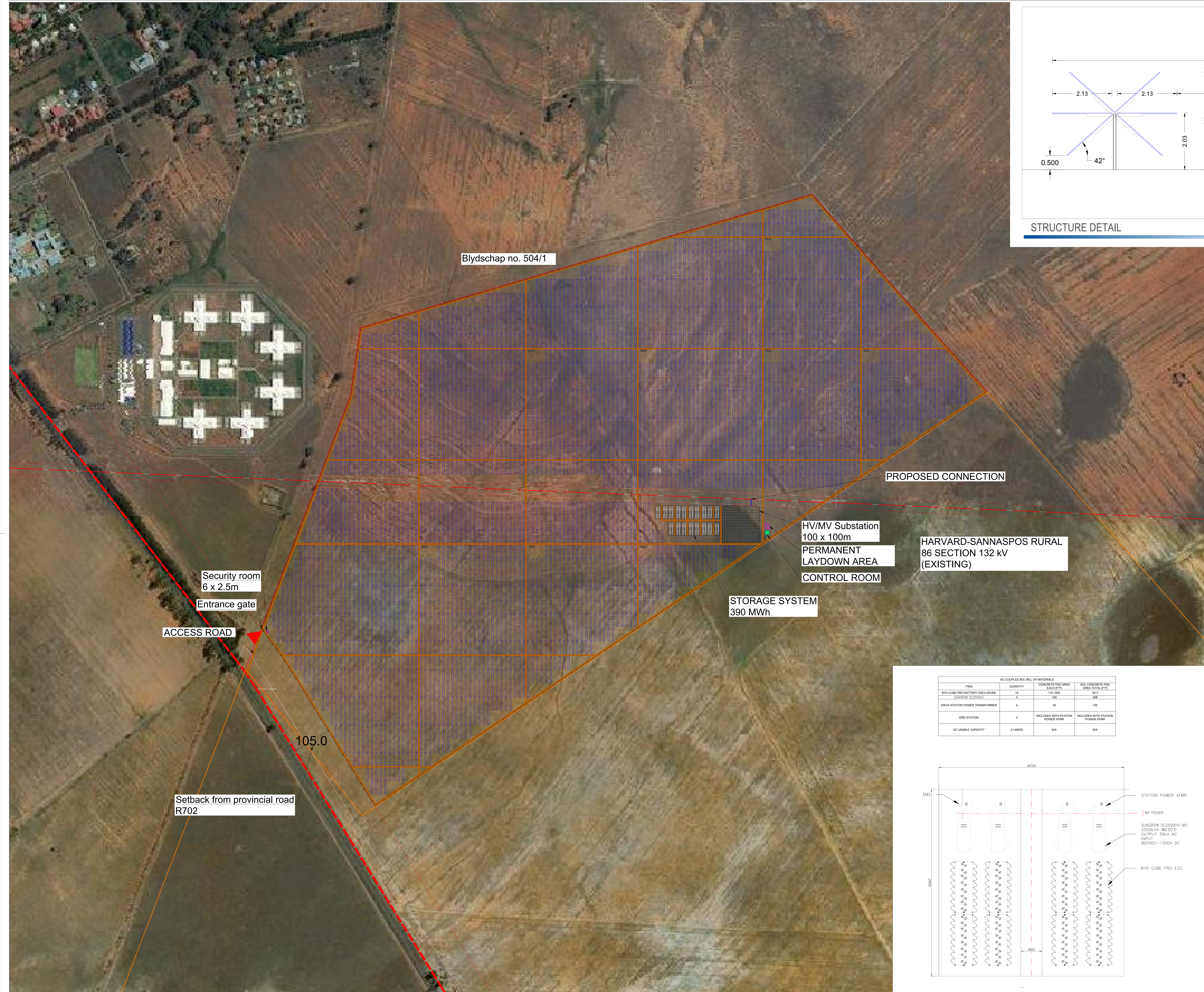


STRUCTURE DETAIL



LEGEND

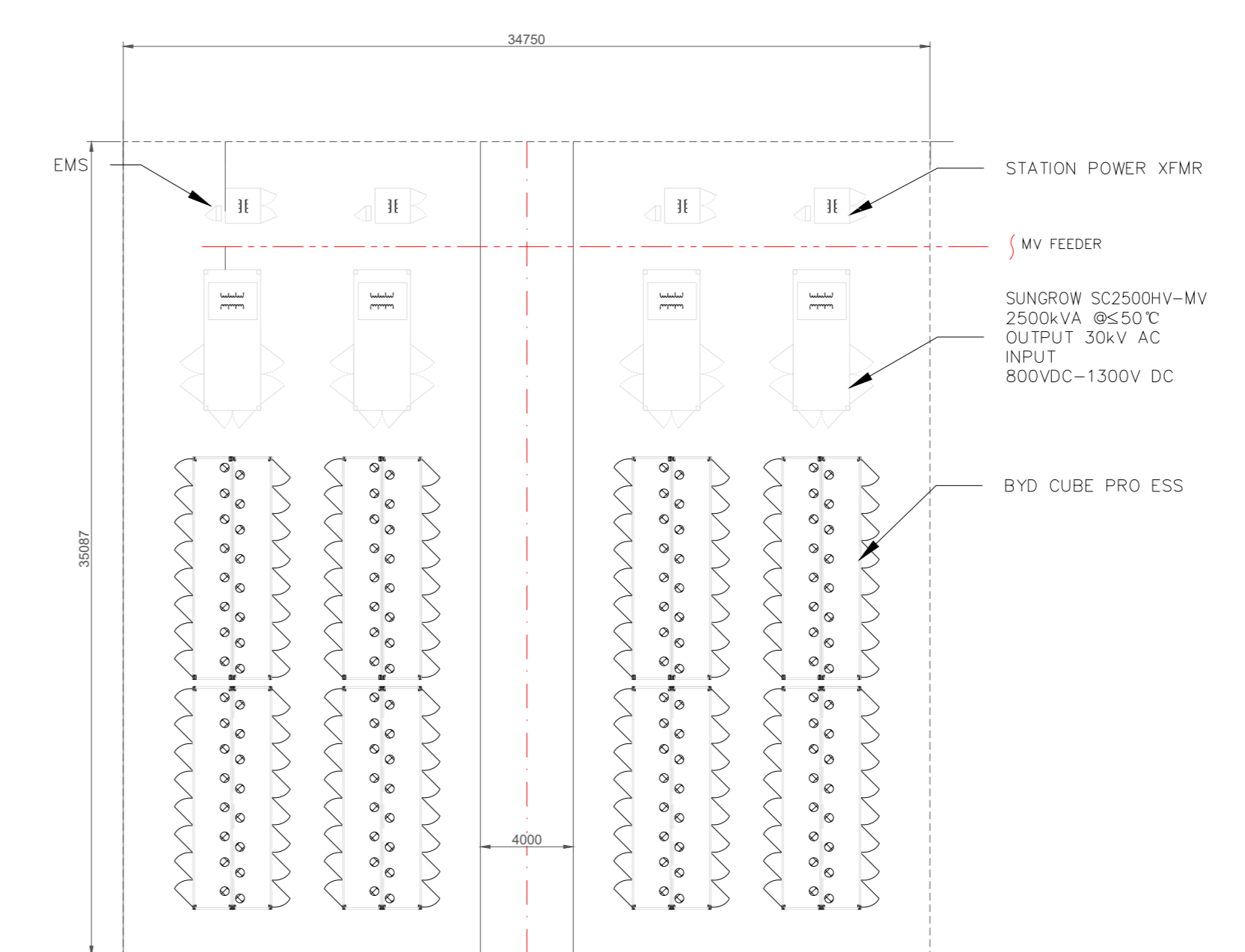
| FOOTPRINT                |                       |
|--------------------------|-----------------------|
| SITE                     | 170 Ha                |
| PLANT AREA (FENCED)      | 165 Ha                |
| LAYDOWN AREA (PERMANENT) | 145 m <sup>2</sup>    |
| BESS AREA                | 1.25 Ha               |
| CONTROL ROOM             | 100 m <sup>2</sup>    |
| SECURITY ROOM            | 15 m <sup>2</sup>     |
| SUBSTATION               | 10.000 m <sup>2</sup> |

SCENARIO 4

| Sonneblom 98904 kWp - 45.000 kWac              |                                      |
|--|--------------------------------------|
| ADDRESS  | Sonneblom Bloemfontein               |
| LOCATION                                       | COUNTRY: South Africa -29.231 26.314 |
| HEIGHT A.S.L                                   | 1420 m                               |
| INSTALLED POWER                                | 98.904 kWp                           |
| PV-PANEL                                       | CS7L-600MS                           |
| AMOUNT   | 164840                               |
| DIMENSIONS                                     | 2173 X 1305 X 35 mm                  |
| ORIENTATION                                    | 0                                    |
| TILT ANGLE                                     | +41°/-41°                            |
| FOUNDATION                                     | TBD                                  |
| ADJUSTMENT OF PANELS                           | 2 rows x structure                   |
| OVERALL HEIGHT OF RACK                         | ... m                                |
| GAP BETWEEN BOTTOM OF PANEL AND GROUND SURFACE | 0,5m                                 |
| ROW PITCH                                      | 12m                                  |
| ROW-TO-ROW DISTANCE                            | ...m                                 |
| SHADING LIMIT ANGLE                            | ...                                  |
| INVERTER                                       | Huawei string inverters              |
| STRING INVERTERS                               | 258                                  |
| TRANSFER STATION                               | N.7x 6MW+ N.1x3 MW                   |
| STRINGS  | 6340                                 |
| PV-RACKS 1 STRING                              | 3170                                 |
| PV-RACKS 2 STRINGS                             | 5380                                 |
| FENCE  | 5380                                 |

- COMMENTS
- Constraint on the tilt angle in order to respect the maximum eight used for EIA.

| AC-COUPLED BIL BILL OF MATERIALS |          |                                  |                                  |
|----------------------------------|----------|----------------------------------|----------------------------------|
| ITEM                             | QUANTITY | CONCRETE PAD AREA EACH PITS      | BOL CONCRETE PAD AREA TOTAL PITS |
| BYD CUBE PRO BATTERY ENCLOSURE   | 16       | 175.7000                         | 2811                             |
| BYD CUBE PRO ESS                 | 4        | 130                              | 520                              |
| SONVA STATION POWER TRANSFORMER  | 4        | 30                               | 120                              |
| EMS STATION                      | 4        | INCLUDED WITH STATION POWER SFMS | INCLUDED WITH STATION POWER SFMS |
| DC USABLE CAPACITY               | 418MWh   | N/A                              | N/A                              |



STORAGE SYSTEM DETAIL

|     |     |    |    |                                 |            |
|-----|-----|----|----|---------------------------------|------------|
| 04  | ENG | PC | JG | General review                  | 03.12.2020 |
| 03  | ENG | PC | JG | Modified DC power and BESS size | 23.10.2020 |
| 01  | ENG | PC | JG | Modified DC power and BESS size | 20.10.2020 |
| R00 | ENG | PC | AL | First Issue                     | 29.01.2020 |

| DRAWING TITLE         | DRAWING NUMBER | ENG DRAWING NAME |
|-----------------------|----------------|------------------|
| xxxx- PV Plant Layout | xxxx           | PV Plant Layout  |

| PROJECT NAME & ADDRESS | APPROVAL STAMP | SCALE |
|------------------------|----------------|-------|
| Sonneblom SOUTH AFRICA |                | ---   |

| CUSTOMER                    | STATUS      | SHEET |
|-----------------------------|-------------|-------|
| CANADIAN SOLAR CONSTRUCTION | PRELIMINARY | 1/1   |

CanadianSolar  
MAKE THE DIFFERENCE

LAYOUT