

22 July 2022

NOTICE OF THE BASIC ASSESSMENT IN SUPPORT OF AN APPLICATION FOR ENVIRONMENTAL AUTHORISATION FOR TWO PROPOSED ACCESS ROADS TO THE NORTH AND THE SOUTH (MERENSKY) VENTILATION SHAFTS AT THE MODIKWA PLATINUM MINE IN BUGERSFORT, FETAKGOMO TUBATSE LOCAL MUNICIPALITY, LIMPOPO PROVINCE

Dear Stakeholder,

This letter serves to notify interested and affected parties (I&APs) that Modikwa Platinum Mine (Pty) Ltd. intends to undertake an application for Environmental Authorisation (EA) under the Environmental Impact Assessment (EIA) Regulations (2014, as amended). This notification is issued in terms of the National Environmental Management Act 107 of 1998 (Act No. 107 of 1998) (NEMA) (as amended) and the Environmental Impact Assessment Regulations, (2014, as amended).

Modikwa Platinum Mine (Pty) Ltd (the Applicant) proposes to construct two (2) access roads that link to the approved North and South (Merensky) Ventilation shafts at the Modikwa Platinum Mine (MPM), situated in Burgersfort, within the Fetakgomo Tubatse Local Municipality in the Limpopo Province. Road 1 (North Ventilation shaft) will be approximately 308 m in length, 6 m in width (3 m either side of the centre line) and requiring an area of approximately 2464 m² to be cleared. Road 2 (Merensky Ventilation shaft) will be approximately 198 m in length, 6 m in width (3 m either side of the centre line) and requiring an area of approximately 1586 m² to be cleared. The proposed development triggers listed activities in terms of GN R. 324 Listing Notice 3 of the EIA Regulations (2014, as amended) and requires an EA, which will follow a Basic Assessment (BA) process, to be undertaken. The application will be submitted to the Limpopo Department of Mineral Resources and Energy (DMRE).

In addition, the proposed project will occur within 500 m of a watercourse and therefore the Applicant also intends to submit an application for water use authorisation to the Department of Water and Sanitation (DWS) for water uses as specified in section 21(c) and (i) of the National Water Act 36 of 1998 (NWA). The water use authorisation will follow a General Authorisation (GA) process under GN 509 of the NWA.

Golder Associates Africa (Pty) Ltd (a member of WSP) has been appointed as the independent Environmental Assessment Practitioner (EAP) to undertake the BA and GA processes.

We hereby would like to invite stakeholders to register as I&APs, and to invite them to contribute comments, ask questions and raise issues of concern or suggestions for enhanced benefits. Electronic copies of the background information document and registration and comment sheet for the project are attached hereto and are also available for download at the following website: <https://www.golder.com/global-locations/africa/south-africa-public-documents/>.

Stakeholders can contribute in the following ways:

- By completing the Registration and Comment Sheet enclosed herein;
- By writing a letter or providing additional written submissions; and
- By email, fax or telephone to the Public Participation Office.

We would also like to draw I&APs' attention to the following comment period:

The Draft Basic Assessment Report (DBAR) and Environmental Management Programme (EMPr) will be available for comment from **22 July 2022** to **24 August 2022**.

The reports will be available on the following website: <https://www.golder.com/global-locations/africa/south-africa-public-documents/>. Printed copies of the DBAR and EMPr will also be available at the public places listed below.

Name of Public Place	Town
Section 21 Office	Modikwa Platinum Mine
Visitors Entrance at Modikwa Mine Central Offices	Modikwa Platinum Mine
Sewing building near the Hwashi Difagate Offices	Modikwa Platinum Mine
Burgersfort Library	Burgersfort
Golder Associates Africa, Maxwell Office Park, Magwa Crescent West, Waterfall City	Midrand

Yours Sincerely

Golder Associates Africa (Pty) Ltd.



Tumelo Mathulwe
Consultant



Dalian Govender
Environmental Assessment Practitioner

TM/DG/Nbh

Attachments: Background Information Document
Registration and Comment Sheet

https://golderassociates.sharepoint.com/sites/154626/project_files/6_deliverables/draft_ba_report/appendices/appendix_c_-_stakeholder_letter_bid_registration_and_comment_sheet/announcement_letter/21498780_english_modikwa_announcement_letter_final_22july2022.docx

22 July 2022

TSEBIŠO YA TEKOLO YA MOTHEO LE MANANEO A TUMELELO YA TŠHOMIŠO YA MEETSE MABAPI LE DITŠHIŠINYO TŠE PEDI TŠA TŠHOMIŠO YA MEBILA YA LEOBA LE BORWA (MERENSKY) BJA MELETE YA GO TSENTŠHA MOYA KA LEOBA LE BORWA (MERENSKY) MOEPONG WA MODIKWA PLATINUM, BURGERSFORT, TIKOLOGONG YA MASEPALA WA SELEGAE WA FETAKGOMO TUBATSE, PROFENSENG YA Limpopo

Thobela,

Modikwa Platinum Mine (Pty) Ltd. e nyaka go dira kgopelo mabapi le Tumelelo ya tša Tikologo (Environmental Authorisation (EA)) go ya ka Melawana (ye e fetošitšwego ya 2014) ya Tekolo ya Kamo ya tša Tikologo (Environmental Impact Assessment (EIA)). Tsebišo ye e phethagatšwa go ya ka Molao 107 wa 1998 wa Taolo ya Bosetšhaba ya Tša Tikologo wo o fetošitšwego le Melawana ya Tekolo ya Kamo ya tša Tikologo, wo o fetošitšwego.

Modikwa Platinum Mine (Pty) Ltd (Modirakgopelo) o šišinya go hlama mebila ye mebedi (2) ye e kopanago le Mebila ye e fetošitšwego ya Leboa le Borwa (Merensky) bja melete ya go tsentšha Moya Moepong wa Modikwa Platinum Mine (MPM), wo o lego Burgersfort, tikologong ya Masepala wa Selegae wa Fetakgomo Tubatse Profenseng ya Limpopo. Mmila 1 (Leboa la Molete wa go tsentšha Moya moepong) o tlo tšea bogolo bja go lekana 308 m ka botelele, 6 m ka bophara (3 m go tloga mothalading wa gare ga mmila go ya mahlakoreng ka bobedi) gomme o tlo hloka gore sekgala sa go lekana 2464 m² se kgorwe. Mmila 2 (Molete wa go tsentšha Moya Moepong wa Merensky) wona o tlo tšea bogolo bja 198 m ka botelele, 6 m ka bophara (3 m go tloga mothalading wa gare ga mmila go ya mahlakoreng ka bobedi) gomme o tlo hloka gore sekgala sa go lekana 1586 m² se kgorwe. Ditšhišinyo tše tša tlhabollo di hlola mešongwana ye e filwego go ya ka Tsebišo ya Mananeo 3 ya GN R. 324 (Listing Notice 3) ya Melawana ya EIA (ye e fetošitšwego ya 2014) gomme e hloka EA e phethagatšwe ka mokgwa wa Tekolo ya Motheo (Basic Assessment (BA)). Kgopelo ye e tlo romelwa go Kgoro ya Limpopo ya Methopo ya Dimenerale le Enetši (Limpopo Department of Mineral Resources and Energy (DMRE)).

Go feta fao, projeke ye e šišinywago e tlo diragala bokgole bja go lekana 500 m go tšwa mothopong meetse, ka fao Modirakgopelo o rata go romela le kgopelo ya tumelelo ya tšhomišo ya meetse Kgorong ya Meetse le Kelelatšhila mabapi le tšhomišo ya meetse go ya ke ka fao go hlalošwago karolong 21(c) le (i) ya Molao 36 wa 1998 wa Bosetšhaba wa Meetse (National Water Act 36 of 1998 (NWA)). Tumelelo ya tšhomišo ya meetse e tlo latela magato a Tumelelo Kakaretšo (General Authorisation (GA)) ka fase ga GN 509 ya NWA.

Golder Associates (yeo gabjale e lego leloko la WSP) e thwadilwe bjalo ka Mošomi wa Tekolo ya tša Tikologo wa go ikema (Environmental Assessment Practitioner (EAP)) go phethagatša mananeo a BA le GA.

Ka fao, mo re rata go mema batšeakarolo go ingwadiša bjalo ka I&APs, le go ba mema gore ba dire ditshwayo goba ditšhišinyo go kaonafatša menyetla ya bona. Dikhopi tša dingwalo tša elektroniki tša tshedimošo ya tlaleletšo Ele tša boingwadišo gammogo le matlakala a ditshwayo mabapi le projeke tše di metleditšwego le tšona di a hwetšagala ka mokgwa wa go taonlouta wepsaeteng ye e latelago: <https://www.golder.com/global-locations/africa/south-africa-public-documents/>.

Batšeakarolo ba ka kgatha tema ka mekgwa ye e latelago:

- Go tlatša Letlakala la Boingwadišo le la Ditshwayo le le metleditšwego fa;
- Go ngwala lengwalo goba go romela dingwalwa tša tlaleletšo; le
- Go emeila, fekse goba go letšetša Public Participation Office

Batšeakarolo ba laletšwa go ingwadiša bjalo ka I&AP le go romela ditshwayo tše di ngwetšwego mabapi le projeke. Sengwalo sa tshedimošo ya tlaleletšo (BID) le letlakala la boingwadišo le ditshwayo le a hwetšagala wepsaeteng ye e latelago: <https://www.golder.com/global-locations/africa/south-africa-public-documents/>.

Re rata le go tsebiša I&AP ka dikano tše di latelago tša go dira ditshwayo:

Pego ya Kakanywa ya Tekolo ya Motheo (Draft Basic Assessment Report (DBAR)) le Lenaeo la Taolo ya tša Tikologo (EMPr) di tlo hwetšagala go tloga ka la **22 July 2022** go fihlela la di **24 August 2022**.

Dipego di tlo hwetšagala wepsaeteng ye e latelago: <https://www.golder.com/global-locations/africa/south-africa-public-documents/>. Dikhopi tše di gatišitšwego tša DBAR le EMPr di tlo hwetšagala mafelong ao a latelago a setšhaba.

Leina la Lefelo la Setšhaba	Toropo
Section 21 Office	Modikwa Platinum Mine
Visitors Entrance at Modikwa Mine Central Offices	Modikwa Platinum Mine
Sewing building near the Hwashi Difagate Offices	Modikwa Platinum Mine
Burgersfort Library	Burgersfort
Golder Associates Africa, Maxwell Office Park, Magwa Crescent West, Waterfall City	Midrand

Wa lena ka botshepegi

Golder Associates Africa (Pty) Ltd.



Tumelo Mathulwe
Setsebi (Consultant)



Dalian Govender
Mošomi wa Tekolo ya tša Tikologo (Environmental Assessment Practitioner)

TM/DG/Nbh

Dimetletšwa: Sengwalwa sa Tshedimošo ya Tlaleletšo (Background Information Document)

Letlakala la Boingwadišo le Ditshwayo (Registration and Comment Sheet)

[https://golderassociates.sharepoint.com/sites/154626/project/files/6/deliverables/draft ba report/appendices/appendix c - stakeholder letter, bid, registration and comment sheet/announcement letter/21498780_sepedi_modikwa_announcement letter_final_22july2022.doc](https://golderassociates.sharepoint.com/sites/154626/project/files/6/deliverables/draft%20report/appendices/appendix%20c-%20stakeholder%20letter,%20bid,%20registration%20and%20comment%20sheet/announcement%20letter/21498780_sepedi_modikwa_announcement%20letter_final_22july2022.doc)

BACKGROUND INFORMATION DOCUMENT: BASIC ASSESSMENT PROCESS FOR TWO PROPOSED ACCESS ROADS AT THE MODIKWA PLATINUM MINE, IN BURGERSFORT, FETAKGOMO TUBATSE LOCAL MUNICIPALITY, LIMPOPO PROVINCE

Date: 22 July 2022

PURPOSE OF THIS DOCUMENT

The purpose of this background information document (BID) is to provide Interested and Affected Parties (I&APs) with more information about Modikwa Platinum Mine's (MPM) intention to undertake a Basic Assessment process for the development of two access roads leading to the North and South (Merensky) ventilation shafts. In addition, we would like to encourage stakeholders to register as I&APs and invite them to contribute comments, ask questions and raise issues of concern or suggestions for enhanced benefits.

Stakeholders are invited to register as I&APs and to participate in the process by commenting on the proposed applications as follows:

- Completing the enclosed Registration and Comment Sheet either in writing, via email or the online link provided here. <https://www.golder.com/global-locations/africa/south-africa-public-documents/>.
- Providing comments on the application by contacting the Public Participation Office.

<https://www.golder.com/global-locations/africa/south-africa-public-documents/>
<https://www.golder.com/global-locations/africa/south-africa-public-documents/>

BACKGROUND AND INTRODUCTION

Modikwa Platinum Mine (MPM) is a Joint Venture between Rustenburg Platinum Mines (RPM), a wholly owned subsidiary of Anglo-American Platinum (Ltd) (AAP) and African Rainbow Minerals Mining Consortium Limited (ARM:MC), a subsidiary of African Rainbow Minerals (ARM) Limited (SRK Consulting, 2021).

MPM was issued a Mining Right (Original RoD Reference number: 6/2/2/477 and LP129MRC) and commenced with mining activities in 2001, with underground and open pit operations subsequently commencing in June 2010. MPM has an installed plant capacity of 240 kilo tonnes per month (ktpm) with current production from the existing operational shafts (i.e., North 1, including Mid shaft, South 1, including Hill shaft and South 2 Shaft) averaging approximately 200 ktpm. The expected Life of Mine (LoM) for MPM is up to November 2043 as stipulated in the Mining Right 129MR (SRK Consulting, 2021).

MPM has existing approved Environmental Authorisations (EAs) in place for the North and South ventilations shafts at the Modikwa mine that were required for the mining activities. However, access roads to the ventilation shafts were not considered in previous applications and therefore form the focus of this application.

Modikwa Platinum Mine (Pty) Ltd (MPM) proposes to construct two (2) access roads that link to the approved North and South (Merensky) Ventilation shafts at the Modikwa Platinum Mine (MPM), situated in Burgersfort, within the Fetakgomo Tubatse Local Municipality in the Limpopo Province. The project triggers the Basic Assessment (BA) process.

In addition, the proposed project will occur within 500 m of a watercourse and therefore the Applicant also intends to submit an application for water use authorisation to the Department of Water and Sanitation (DWS) for water uses as specified in section 21(c) and (i) of the National Water Act 36 of 1998 (NWA). The water use authorisation will follow a General Authorisation (GA) process under GN 509 of the NWA.

Golder Associates Africa (Pty) Ltd (a member of WSP) has been appointed as the independent environmental assessment practitioner (EAP) to undertake the BA and GA processes.

PROJECT LOCATION

The two (2) proposed access roads are located within MPM's existing mining area and associated mining activities take place on portions of the farms Maandagshoek 254 KT, Driekop 253 KT, Hendriksplaats 281 KT, Onverwacht 292 KT, Winterveld 93 KT and Doornbosch 294 KT (Figure 1).

The proposed access road to the north ventilation shaft will be located on Portion 281 of Hendriksplaats 281 KT. The road will join to an existing community road.

The proposed access road to the south (Merensky) ventilation shaft will be located on Portion 1 of Onverwacht 292 KT. The road will join to the existing Merensky south shaft operations.

PROJECT DESCRIPTION

MPM proposes to construct two (2) access roads that link to the approved North and South (Merensky) Ventilation shafts at the Modikwa Platinum Mine (MPM), situated in Burgersfort, within the Fetakgomo Tubatse Local Municipality in the Limpopo Province. Road 1 (north ventilation shaft) will be approximately 308 m in length, 6 m in width (3 m either side of the centre line) and requiring an area of approximately 2464 m² to be cleared. Road 2 (south ventilation shaft) will be approximately 198 m in length, 6 m in width (3 m either side of the centre line) and requiring an area of approximately 1586 m² to be cleared. Refer to Figure 2.

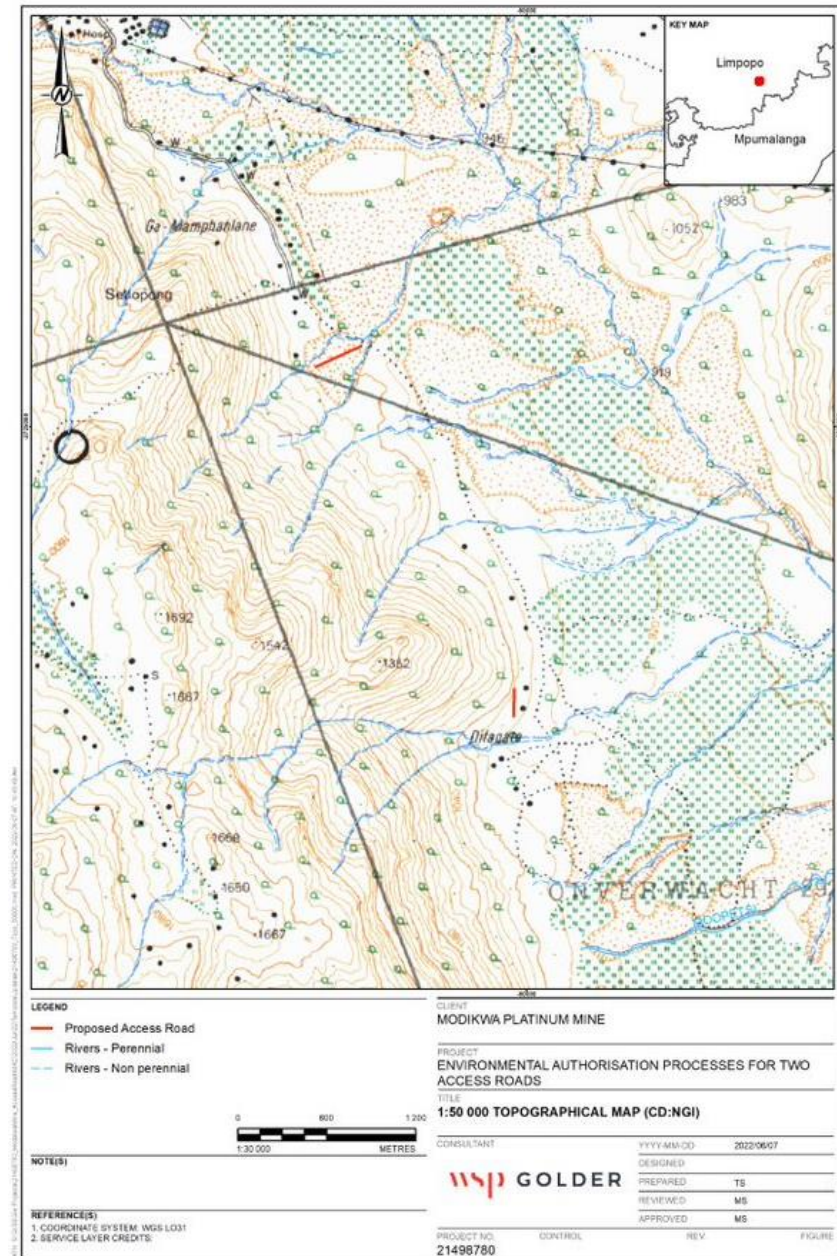


Figure 1: Locality Map

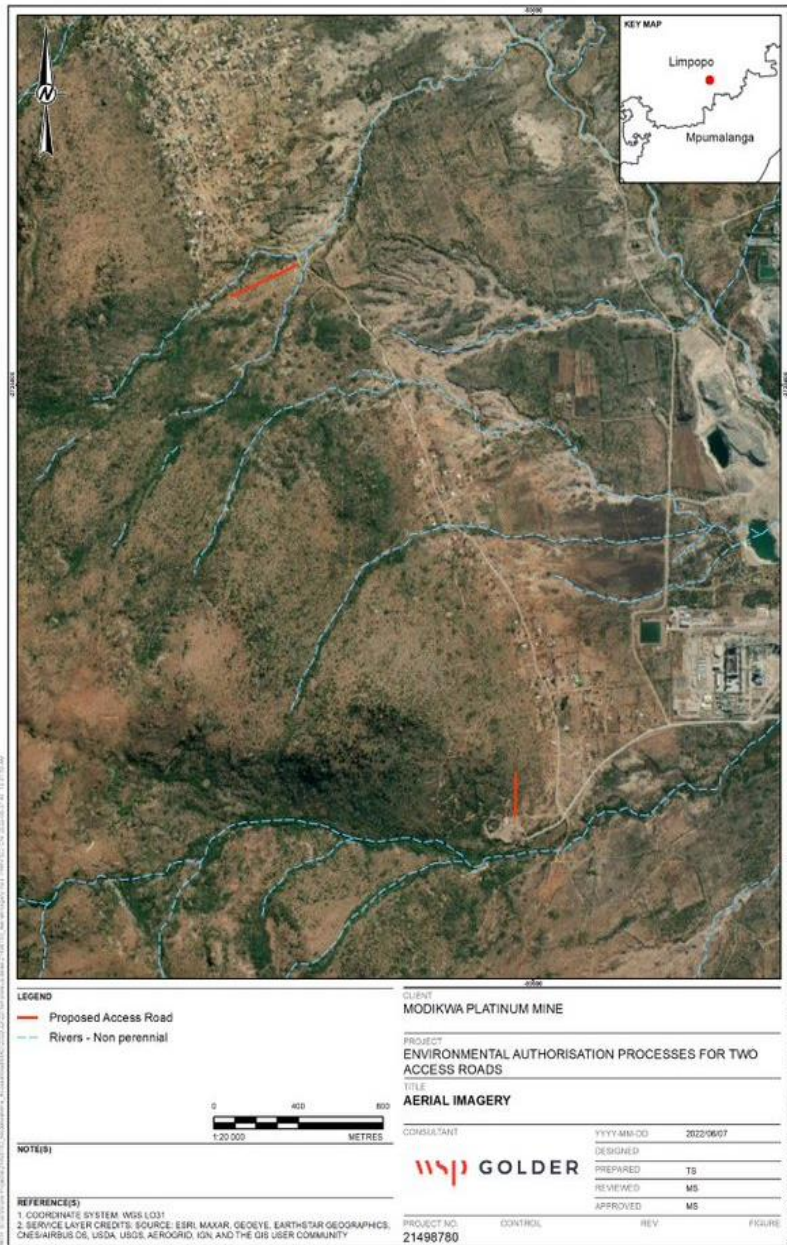


Figure 2: Aerial view of the proposed access roads

ENVIRONMENTAL AUTHORISATION PROCESS

The current EIA Regulations, GN R. 324, GN R. 325, GN R. 326 and GN R. 327, promulgated in terms of Section 24(5), 24M and 44 of the NEMA and subsequent amendments, commenced on 11 June 2021. GN R. 327 lists those activities for which a Basic Assessment (BA) is required, GN R. 324 lists certain activities and competent authorities in specific identified geographical areas. GN R.326 defines the EIA processes that must be undertaken to apply for Environmental Authorisation in respect of activities listed in GN R.325.

The specific listed activities are indicated below:

Activity Number	Description
Activity No.4 of Listing Notice 3	<ul style="list-style-type: none"> Road 1 (to the north ventilation shaft) will be approximately 308 m in length, 6 m in width (3m either side of the centre line) Road 2 (to the south ventilation shaft) will be approximately 198 m in length, 6 m in width (3 m either side of the centre line).
Activity No.12 of Listing Notice 3	<ul style="list-style-type: none"> Road 1 will require an area of approximately 2464 m² to be cleared. Road 2 will require an area of approximately 1586m² to be cleared.

The proposed development triggers listed activities in terms of GN R. 324 Listing Notice 3 of the Environmental Impact Assessment (EIA) Regulations (2014, as amended) and requires an environmental authorisation (EA) which follows a Basic Assessment (BA) process to be undertaken. The application will be submitted to the Limpopo Department of Mineral Resources and Energy (DMRE).

GENERAL AUTHORISATION PROCESS

In terms of section 39 of the NWA a responsible authority may, subject to Schedule 1, by notice in the Gazette generally; in relation to a specific water resource; or within a specified area authorise all or any category of persons to use water, subject to any regulation made under section 26 and any conditions imposed under section 29 of the NWA. The planned access roads will be located within the regulated area of a watercourse. A wetland and terrestrial ecological assessment will be conducted to determine the potential impact of the proposed access roads. Following the impact assessment, a risk assessment will be undertaken on the proposed construction and operation of the access road, taking into consideration the regulatory restrictions, namely the General Authorisation of Section 21(c) and Section 21(i). Dependent on the outcome of the risk assessment, an application for registration of the water uses, as generally authorised water uses, will compiled and submitted to the Department of Water and Sanitation (DWS) for approval.

INVITATION TO REGISTER AS AN I&AP TO COMMENT

Stakeholders are invited to register as I&APs and to lodge written comments regarding the project in any of the following ways:

By completing the Registration and Comment Sheet enclosed with this BID

By writing a letter or providing additional written submissions

By email, fax or telephone to the Public Participation Office

AVAILABILITY OF THE DRAFT BASIC ASSESSMENT REPORT

The Draft Basic Assessment Report (DBAR) and Environmental Management Programme (EMPr) will be available for comment from **22 July 2022** to **24 August 2022**. The reports will be available on the following website: <https://www.golder.com/global-locations/africa/south-africa-public-documents/>. Printed copies of the DBAR and EMPr will also be available at the public places listed below.

Name of Public Place	Town
Section 21 Office	Modikwa Platinum Mine
Visitors Entrance at Modikwa Mine Central Offices	Modikwa Platinum Mine
Sewing building near the Hwashi Difagate Offices	Modikwa Platinum Mine
Golder Associates Africa, Maxwell Office Park, Magwa Crescent West, Waterfall City	Midrand

In terms of the Protection of Personal Information Act (Act No. 4 of 2013) (POPIA), personal information provided by I&APs will only be used for the sole purposes of this project and will only be shared with the relevant Government Departments as per the regulatory requirements and will not be shared with anyone else without their consent.

FOR MORE INFORMATION, PLEASE CONTACT:

Public Participation Office; Golder Associates Africa (Pty) Ltd;
PO Box 6001, Halfway House, 1685; Tel: 011 254 4800; Fax: 086 582 1561
E-mail: gld.pp@wsp.com

Tšatšikgweri: 22 July 2022

MORERO WA SENGWALWA SE

Morero wa sengwalwa se sa tshedimošo ya tlaleletšo (background information document (BID)) ke go aba tshedimošo ya tlaleletšo go bao ba nago le kgahlego le bao ba amegago (Interested and Affected Parties (I&APs)) mabapi le maikemišetšo a Modikwa Platinum Mine (MPM) a go phethagatša lenaneo la Tekolo ya Motheo ya tlabollo ya mebila ye mebedi ya go ya Leboa le Borwa (Merensky) ya melete ya go tsentsha moya moepong. Go feta fao, re rata go hlohleletša batšeakarolo go ingwadiša bjalo ka I&AP le go ba laletša go dira ditshwayo, go botšiša dipotšišo le go tšweletša dingongorego goba ditshwayo go kaonafatša menyetla.

Batšeakarolo ba laletšwa go ingwadiša bjalo ka I&AP le go kgatha tema lenaneong ka go dira ditshwayo mabapi le dikgopelo ka mokgwa wo o latelago:

- Go tlatša Letlakala la Boingwadišo le la Ditshwayo le le metleditšwego, ba ka dira se ka mokgwa wa go ngwala, go romela emeile goba ka go šomiša linki ye e filwego mo.
- Go fana ka ditshwayo kgopelong ka go ikgakanya le Public Participation Office.<https://www.golder.com/global-locations/africa/south-africa-public-documents/https://www.golder.com/global-locations/africa/south-africa-public-documents/>

MATSENO LE TSHEDIMOŠO YA TLALELETŠO

Modikwa Platinum Mine (MPM) ke tšhomišano ya mokopanelwa magareng ga Rustenburg Platinum Mines (RPM), ye e welago ka tlase ga Anglo American Platinum (Ltd) (AAP) le African Rainbow Minerals Mining Consortium Limited (ARM:MC), yeo yona e welago ka tlase ga African Rainbow Minerals (ARM) Limited (SRK Consulting, 2021).

MPM e filwe Tokelo ya tša Moepo (Original RoD Reference number: 6/2/2/477 and LP129MRC) gomme ya thoma ka tša moepo ngwageng wa 2001, gomme mešomo ya moepo wa go ya fase le wa ka godimo ga lefase yona ya thoma ngwageng wa June 2010. MPM e na le maatla a go kgona go tšweletša dithoune tše 240 kilo ka kgwedi (ktpm) go tšwa meleteng ye e lego gona ebile e šomago gabjale (i.e., Leboa 1, go akaretšwa molete wa Gare, Borwa 1, gammogo le Molete wa Hill le wa Borwa 2) tšeo di tšweletšago tekanyo ya 200 ktpm. Nako ye moepo o tla gagabago (Life of Mine (LoM)) mabapi le MPM ke go fihlela Nofemere 2043 bjale ka ge go hlalošitšwe go Tokelo ya tša Moepo (Mining Right 129MR (SRK Consulting, 2021)).

MPM e na le Tumelelo ya tša Tikologo ye e fetišitšwego (Environmental Authorisations (EA)) mabapi le melete ya go tsentsha moya ya Leboa le ya Borwa moepong wa Modikwa mine yeo e hlokegago mabapi le mešomo ya tša moepo. Le ge go le bjalo, mebila ya go ya meleteng ya go tsentsha moya e be e se ya akaretšwa dikgopelong tša morago, ka fao le yona ke karolo ya kgopelo ye.

Modikwa Platinum Mine (Pty) Ltd (MPM) e šišinya go hlama mebila ye mebedi (2) ye e kopanago le Mebila ye e fetišitšwego ya Leboa le Borwa (Merensky) bja melete ya go tsentsha Moya Moepong wa Modikwa Platinum Mine (MPM), wo o lego Burgersfort, tikologong ya Masepala wa Selegae wa Fetakgomo Tubatse Profenseng ya Limpopo. Projeke e hloka lenaneo la Tekolo ya Motheo.

Go feta fao, projeke ye e šišinywago e tlo diragala bokgole bja go lekana 500 m go tšwa mothopong meetse, ka fao Modirakgopelo o rata go romela le kgopelo ya tumelelo ya tšhomišo ya meetse Kgorong ya Meetse le Kelelatšhila mabapi le tšhomišo ya meetse go ya ke ka fao go hlalošwago karolong 21(c) le (i) ya Molao 36 wa 1998 wa Bosetšhaba wa Meetse (National Water Act 36 of 1998 (NWA)). Tumelelo ya tšhomišo ya meetse e tlo latela magato a Tumelelo Kakaretšo (General Authorisation (GA)) ka fase ga GN 509 ya NWA.

Golder Associates (yeo gabjale e lego leloko la WSP) e thwadilwe bjalo ka mošomi wa tekolo ya tša tikologo wa go ikema (Environmental Assessment Practitioner (EAP)) go phethagatša mananeo a BA le GA.

LEFELO LA PROJEKE

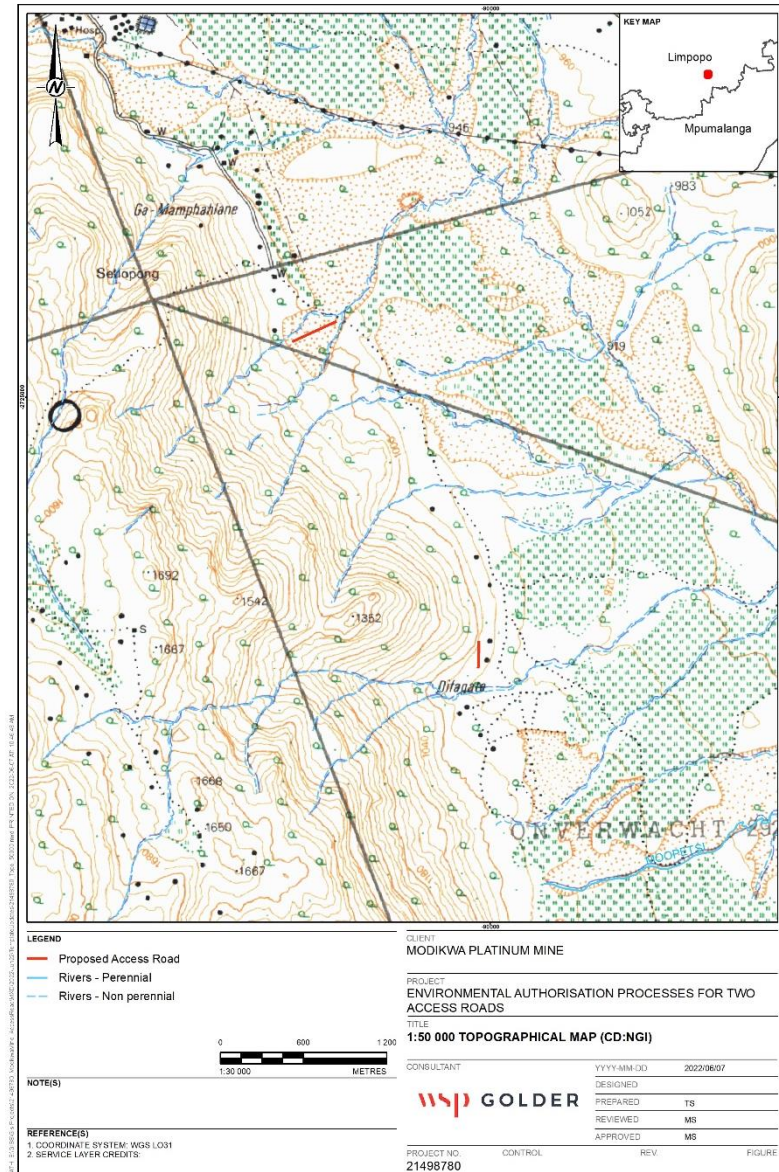
Mebila ye mebedi (2) ye e šišinywago e hwetšagala lefelong la bjale la moepo la MPM gomme merero ya tša moepo e phethagatšwa dikarolong tša dipolase tša Maandagshoek 254 KT, Driekop 253 KT, Hendriksplaats 281 KT, Onverwacht 292 KT, Winterveld 93 KT le Doornbosch 294 KT (**Seswantšho 1**).

Mebila ye e šišinywago e ya leboa la molete wa go tsentšha moya wa moepo wo o hwetšagalago Karolong 281 ya Hendriksplaats 281 KT. Mmila o tlo kopana le mmila wo o lego gona wa setšhaba.

Mmila wo o šišinywago borwa (Merensky) bja molete wa go tsentšha moya moepong o tlo hwetšagala Karolong 1 ya Onverwacht 292 KT. Mmila o tlo kopana le molete wa borwa wa Merensky wo o šetšseo o šoma.

TLHALOŠO YA PROJEKE

MPM e šišinya go hlama mebila ye mebedi (2) ye e kopanago le mebila ye e fetišitšwego ya Leboa le Borwa (Merensky) bja molete ya go tsentšha Moya Moepong wa Modikwa Platinum Mine (MPM), wo o lego Burgersfort, tikologong ya Masepala wa Selegae wa Fetakgomo Tubatse Profenseng ya Limpopo. Mmila 1 (leboa la molete wa go tsentšha moya moepong) o tlo tšea bogolo bja go lekana 308 m ka botelele, 6 m ka bophara (3 m go tloga mothalading wa gare ga mmila go ya mahlakoreng ka bobedi) gomme go tlo hloka gore sekgala sa go lekana 2464 m² se kgorwe. Mmila 2 (molete wa go tsentšha moya moepong) wona o tlo tšea bogolo bja 198 m ka botelele, 6 m ka bophara (3 m go tloga mothalading wa gare ga mmila go ya mahlakoreng ka bobedi) gomme go tlo hloka gore sekgala sa go lekana 1586 m² se kgorwe. Refer to **Seswantšho 2**.



Seswantšho 1: Mmapa wa selegae



Seswantšho 2: Pono ya sefofane ya ditsela tše di šišintšwego tša phihlelelo

LENANEO LA TUMELELO YA TŠA TIKOLOGO

Melawana ya bjale ya EIA, GN R. 324, GN R. 325, GN R. 326 le GN R. 327, ye e tsebagaditšwego go ya ka Karolo 24(5), 24M le 44 ya NEMA le diphešo tše di dirilwego, go thoma ka 11 June 2021. GN R. 327 e hlaloša merero yeo go hlokegago Tekolo ya Motheo, GN R. 324 e hlaloša merero ye mengwe le balaodi bao ba swanetšego mafelong a itšego a tikologo. GN R.325 e fa tlhalošo ya mananeo a EIA ao a swanetšego go phethagatšwa kgopelong ya Tumelelo ya tša Tikologo mabapi le merero ye e filwego go GN R.326. Mešongwana ye go bolelwago ka yona, e laeditšwe ka fase:

Nomoro ya Mošongwana	Tlhalošo
Mošongwana No.4 wa Lenaneotsebišo 3	<ul style="list-style-type: none"> Mmila 1 (go leba leboa la molete wa go tsentšha moya moepong) o tlo tšea bogolo bja go lekana 308 m ka botelele, 6 m ka bophara (3m go tloga mothalading wa gare ga mmila go ya mahlakoreng ka bobedi) Mmila 2 (go leba bodikela bja molete wa go tsentšha moya moepong) o tlo tšea bogolo bja go lekana 198 m ka botelele, 6 m ka bophara (3 m go tloga mothalading wa gare ga mmila go ya mahlakoreng ka bobedi).
Mošongwana No.12 wa Lenaneotsebišo 3	<ul style="list-style-type: none"> Mmila 1 go tlo hloka gore sekgala sa go lekana 2464 m² se kgorwe. Mmila 2 go tlo hloka gore sekgala sa go lekana 1586m² se kgorwe.

LENANEO LA TUMELELO KAKARETŠO

Go ya ka karolo 39 ya NWA, molaodi yo a swanetšego a ka, go ya ka Šedule 1, ka tsebišo go Gazette; mabapi le methopo ya meetse ye e itšego; goba lefelong le le hlathilwego, a dumelela batho ka moka goba ba itšego gore ba šomiše meetse, ka go latela molawana ofe goba ofe ka fase ga karolo 26 le mabaka afe goba afe ao a šomišwago ka fase ga karolo 29 ya NWA.

Tumelelo ya tšhomišo ya meetse ka fase ga karolo ye ga e fetoše goba go fokotša magomo a tshwanelo ya tšhomišo ya meetse ye motho a ka bago le yona go ya ka Molao wo. GA ye e tsebagaditšwego go ya ka karolo 39 ya NWA, ye e phatlalatšwago Gazette 40229 ya Mmušo, Tsebišo 509 ya 2016 ka la 26 Agostose 2016 e hlaloša gabotse bogolo bja mothopo wa meetse, le lefelo le le laolwago la mothopo wa meetse.

Mebila ye e beakanywago e tlo hwetšagala lefelong le la go laolwa la mothopo wa meetse. Tekolo ya lefelo le le thapilego le tikologo ya dipula e tlo dirwa go netefatša kamo mpe ya mebila ye e šišinywago. Ka morago ga teko ya kamo mpe, tekolo ya dikotsi e tlo phethagatšwa mabapi le mošomo wa moago le go šoma ga mebila, e bile go elwa hloko Tumelelo Kakaretšo ya Karolo 21(c) le Karolo 21(i). Ka morago ga dipelo tša tekolo ya dikotsi, kgopelo ya bingwadišo bja tšhomišo ya meetse, bjalo ka ge ka se tlwaelo tšhomišo ya meetse e dumelelwa, e tlo phethagatšwa le go romelwa Kgorong ya Meetse le Kelelatšhila gore di fetišwe.

TALETŠO YA BOINGWADIŠO BJA I&AP GORE BA DIRE SITSHWAYO

Bateakarolo ba laletšwa go ingwadiša bjalo ka I&AP le go ngwala fase ditshwayo mabapi le projeke ka go šomiša mokgwa ofe goba ofe wo o latelago:

Ka go tlatša Letlakala la Boingwadišo le la Ditshwayo ao a metleditšwego go BID

Ka go ngwala lengwalo goba go romela ditshwayo tše dingwadilwego fase

Ka go romela emeile, go feksa goba go leletša Public Participation Office

Pego ya Kakanywa ya Tekolo ya Motheo (Draft Basic Assessment Report (DBAR)) le Lenaeo la Taolo ya tša Tikologo (EMPr) di tlo hwetšagala go tloga ka la **22 July 2022** go fihlela la di **24 August 2022**. Diwego di tlo hwetšagala wepsaeteng ye e latelago: <https://www.golder.com/global-locations/africa/south-africa-public-documents/>. Dikhopi tše di gatišitšwego tša DBAR le EMPr di tlo hwetšagala mafelong ao a latelago a setšhaba.

Leina la Lefelo la Setšhaba	Toropo
Section 21 Office	Modikwa Platinum Mine
Visitors Entrance at Modikwa Mine Central Offices	Modikwa Platinum Mine
Sewing building near the Hwashi Difagate Offices	Modikwa Platinum Mine
Burgersfort Library	Burgersfort
Golder Associates Africa, Maxwell Office Park, Magwa Crescent West, Waterfall City	Midrand

Ge go latelwa Molao wa Tšhireletšo ya Tshedimošo ya Batho (Molao. 4 wa 2013) (POPIA), tshedimošo ya batho ye e abago ke I&AP e tlo šomišwa fela mabapi le morero wa projeke ye ebile e tlo abelwa Dikgoro tše doi swanetšego tša Mmušo go ya le ka dinyakwa tša taolo ebile di ka se fiwe batho ba bangwe ntle le tumelelo ya gago.

MABAPI LE TSHEDIMOŠO YE NNGWE, KA KGOPELO IKGOKAGANYE LE:

Public Participation Office; Golder Associates Africa (Pty) Ltd;

PO Box 6001, Halfway House, 1685; Tel: 011 254 4800; Fax: 086 582 1561

E-mail: gld.pp@wsp.com

NOTICE OF THE BASIC ASSESSMENT AND WATER USE AUTHORISATION PROCESSES IN SUPPORT OF AN APPLICATION FOR ENVIRONMENTAL AUTHORISATION FOR TWO PROPOSED ACCESS ROADS TO THE NORTH AND THE SOUTH (MERENSKY) VENTILATION SHAFTS AT THE MODIKWA PLATINUM MINE, FETAKGAMO TUBATSE LOCAL MUNICIPALITY, LIMPOPO PROVINCE

Registration and Comment Sheet

Your comments are an important contribution into this permitting process. We would like to interact directly with you and encourage you to register as an interested and affected party so that we can keep you updated as this project moves forward and respond to any questions or concerns that you may wish to raise.

PERSONAL DETAILS			
Name	Surname	Title	Organisation / Department <i>(If applicable)</i>
CONTACT INFORMATION			
Mobile Number	Land Line Contact Number	Fax Number	
		Office	
		Home	
Email	Postal Address		Postal code
LANDOWNERS			
If your property falls within the boundary of environmental authorisation application area, please tell us your farm name and erf/portion number			
WOULD YOU LIKE TO REGISTER AS AN INTERESTED AND AFFECTED PARTY?			
Please register me as an interested and affected party (I&AP) for this project so that I may receive further information and notifications as the project develops			YES
			NO
Preferred Method of Communication <i>(Mark with an X)</i>	Post	Email	Fax
I hereby disclose below any direct business, financial, personal or other interest that I may have in the approval or refusal of the application:	Date		
	Signature		

For internal use to confirm capture of stakeholder details into the stakeholder database

Stakeholder database reference number

Signature of data capturer

Golder Associates (a member of WSP) as a good Corporate citizen complies to the Protection of Personal Information Act and confirm that your details will be kept confidential and will not be shared with any other third party without your prior concern.

COMMENT(S)

You are welcome to use different pages should you so wish.

I have the following comments to make regarding the project and/or the public consultation process:

.....
.....
.....
.....
.....
.....
.....
.....
.....
.....
.....
.....
.....
.....
.....
.....
.....
.....
.....

Please ask the following of my colleagues / friends to register as Interested and Affected Persons for this regulatory authorisation processes:

NAME	CONTACT DETAILS

PLEASE RETURN THE REGISTRATION AND COMMENT SHEET TO:

Public Participation Office
Golder Associates Africa (Pty) Ltd.
PO Box 6001, Halfway House, 1685
Tel: (011) 254 4800; Fax: (086) 582 1561
E-mail: gld.PP@wsp.com

THANK YOU

TSEBIŠO YA TEKOLO YA MOTHEO LE MANANEO A TUMELELO YA TŠHOMIŠO YA MEETSE MABAPI LE DITŠHIŠINYO TŠE PEDI TŠA TŠHOMIŠO YA MEBILA YA LEBOA LE BORWA (MERENSKY) BJA MELETE YA GO TSENTŠHA MOYA KA LEBOA LE BORWA (MERENSKY) MOEPONG WA MODIKWA PLATINUM, BURGERSFORT, TIKOLOGONG YA MASEPALA WA SELEGAE WA FETAKGOMO TUBATSE, PROFENSENG YA LIMPOPO

Letlakala la Boingwadišo le Ditshwayo

Ditshwayo tša gago di bohlokwa lenaneong le la tumelelo Re ka rata go boledišana thwii le wena le go go hlohleletša go ingwadiša bjalo ka bakgathatema bao ban ago le kgahlego le bao ba amegago gore re kgone go fa tshedimošo mabapi le projeke ye ge e tšwela pele le go ikarabela dipotšišong dife goba dife tše o ka bago le tšona.

DINTLHA TŠA GAGO			
Leina	Sefane	Hlog o	Mokgatlo / Kgoro (ge go hlokega)
DINTLHA TŠA BOIKGOKAGANYO			
Nomoro ya Sellathekeng	Nomoro ya Mogala wa Gae	Nomoro ya Fekse	
	Ofise		
	Gae		
Emeile	Atrese ya Lengwalo		Khoute ya atrese
LANDOWNERS			
Ge eba moago wa gago o wela ka fase ga lefelo leo go dirwago kgopelo ya tumelelo, ka kgopelo re botše leina la polase le nomoro ya erf/portion			
NAA O RATA GO INGWADIŠA BJALO KA MOTHO YO A NAGO LE KGAHLEGO EBILE BA AMEGAGO?			
Ka kgopelo nngwadiše bjalo ka mokgathatema yo a amegago ebile a amegago (I&AP) projekeng ye gore ke amogele tshedimošo le ditsebišo ge projeke e tšwela pele		EE	AOWA
Mokgwa wa Dipoledišano wo o o ratago (Swaya ka X)	Lengwalo	Emeile	Fekse
Ke tsebagatša kamano ya ka mabapi le tšhomišano, tša mašeleng goba dikgahlego dife goba dife tše nka bago le tšona mabapi le tumelelo goba go phagelwa thoko ga kgopelo:	Tšatšikgwedi		
	Mosaeno		

E šomišwa fela go netefatša ditntlha tša batšeakarolo datapeiseng

Nomoro ya Datapeise ya motšeakarolo

Mosaeno wa mongwadiši

Golder Associates (ye e lego leloko la WSP) bjalo ka modudi wa modudi yo a latelago Molao wa Tshedimošo ya Batho e tišetša gore dintlha tša gago di tlo šireletšwa le go swarwa bjalo ka sephiri ebile e ka se abelanwe le mang goba mang ntle le tumelelo ya gago.

DITSHWAYO

O dumeletšwe go šomiša matlakala a mangwe ge o nyaka.

Ken a le ditshwayo tše di latelago mabapi le projeke le/goba lenaneo la dipoledišao le setšhaba:

.....

.....

.....

.....

.....

.....

.....

.....

.....

.....

.....

.....

.....

.....

.....

.....

.....

.....

.....

Ka kgopelo, botšiša bašomikanna/bagwera go ingwadiša bjslo ks Bao ban ago le kgahlego le bao ba amegago mabapi le lenaneo le la taolo ya tumelelo:

LEINA	DINTLHA TŠA BOIKGOKAGANYO

<p>KA KGOPELO ROMELA LETLAKALA LA BOINGWADIŠO LE DITSHWAYO GO:</p> <p>Public Participation Office Golder Associates Africa (Pty) Ltd. PO Box 6001, Halfway House, 1685 Tel: (011) 254 4800; Fax: (086) 582 1561 E-mail: gld.PP@wsp.com</p> <p>RE A LEBOGA</p>
--